



**BOROUGH OF AMBRIDGE 600
ELEVENTH STREET
AMBRIDGE, PA 15003
724-266-4070**

STREET OPENING & SIDEWALK PERMIT APPLICATION \$250.00

1. Applicant's Name:		2. Business Address & Phone Number:	
3. Start Date: (M/D/YR)	4. Completion Date:	5. Name of Street to be Opened:	
6. Nearest Intersecting Street to Opening:		7. Street Numbers of Abutting Properties:	
8. Size of Opening: _____ Width _____ Depth _____ Length		9. Distance of Opening from Curb or Pavement Edge (Feet):	
10. Purpose of Opening:			
I (we) hereby agree to be bound by the provisions of the ordinances, specifications, and regulations of the Borough governing openings in or under municipal streets and rights-of-way, and to such special conditions, restrictions and regulations as many be imposed by the Superintendent. SEE INSTRUCTIONS ATTACHED TO APPLICATION-PERMIT FORM			
		Applicant's Signature _____ (Date) _____	
11. Plans Approved By:		12. Date Application Approved: (M/D/YR)	
13. Deposit and Refund Information: Amount Deposited \$ _____ Receipt No. _____ Cost of Work \$ _____ Amount Refunded \$ _____		14. Bond Information: Bond Amount: \$ _____ Expiration _____ Date(M/D/YR) _____	
15. Date of Refund: (M/D/YR)		16. Restoration Date: (M/D/YR)	
17. Dates of Inspections & By Whom:			
18. Reason Permit Revoked:		By Whom:	Date Revoked: M/D/YR
19. Insurance Information:		20. Workman's Comp Information:	

The applicant is hereby authorized to Make an opening in or under the above-named street at the location designated; provided, however, all work is performed in accordance with the applicant's plans, the Borough's ordinances, specifications and regulations governing street openings, and the following special conditions.:

_____ or such special conditions as may be imposed during the performance of the authorized work.

Permit Number: _____
2022-ms

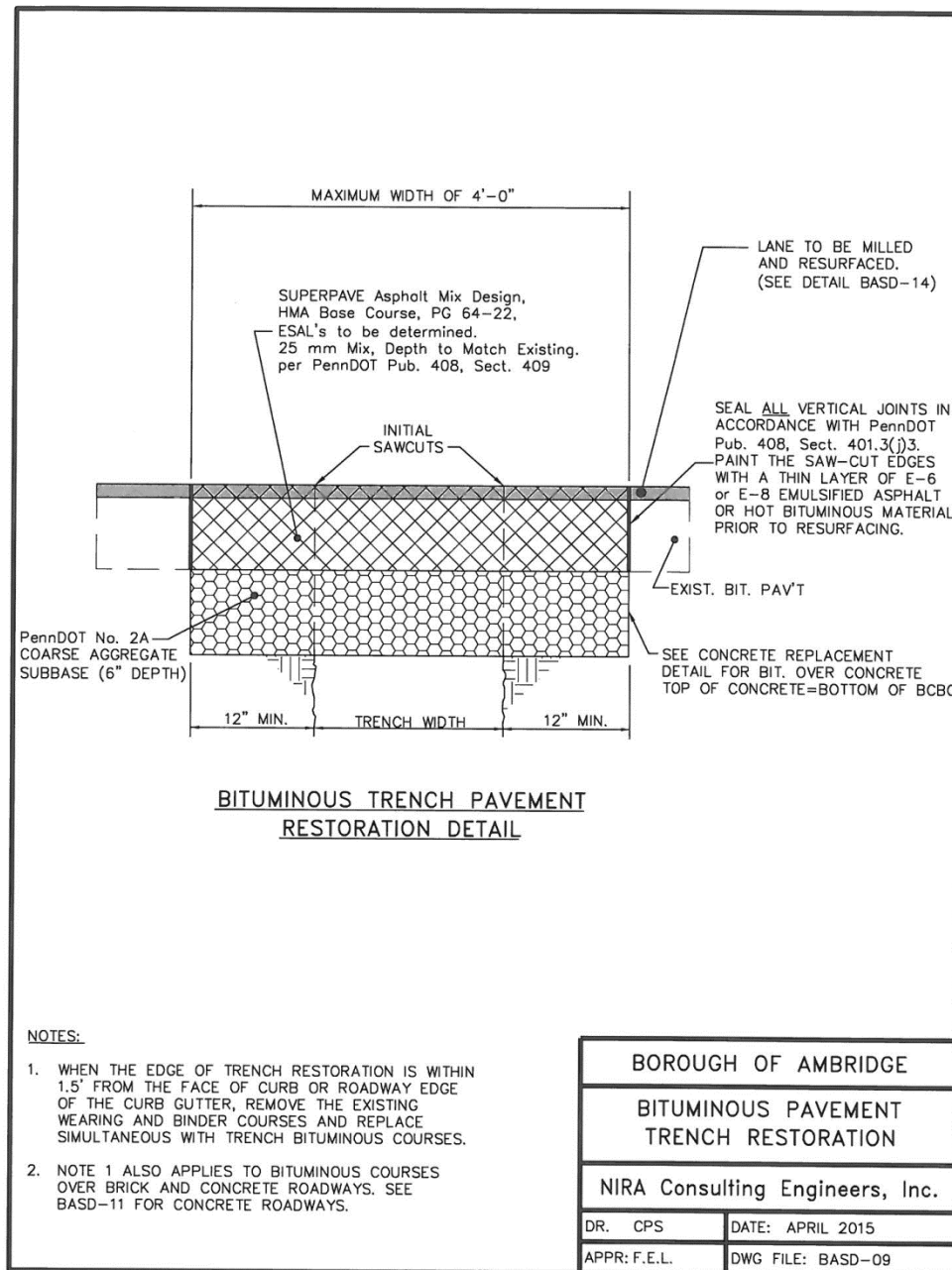
Superintendent's Signature (Date)

STREETS AND SIDEWALKS

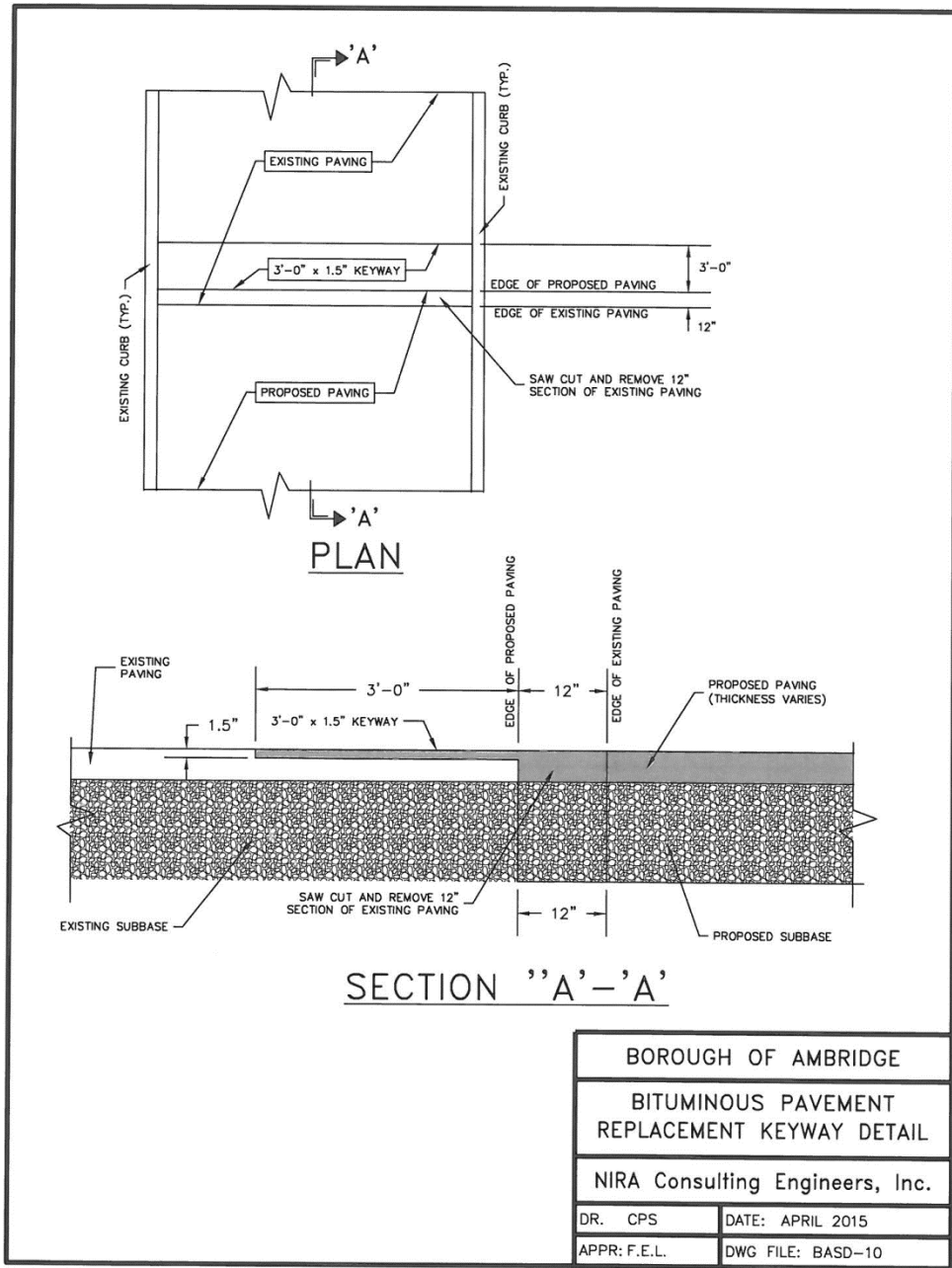
265 Attachment 3

Borough of Ambridge

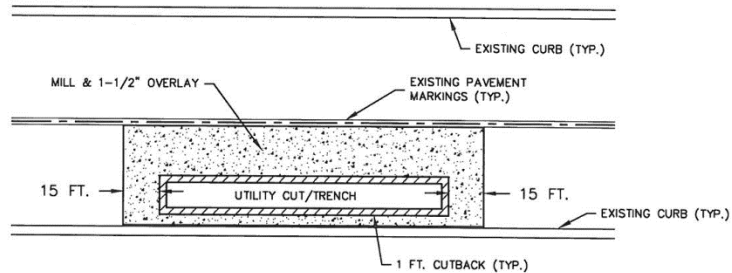
Street Opening and Excavation Figures



AMBRIDGE CODE



STREETS AND SIDEWALKS



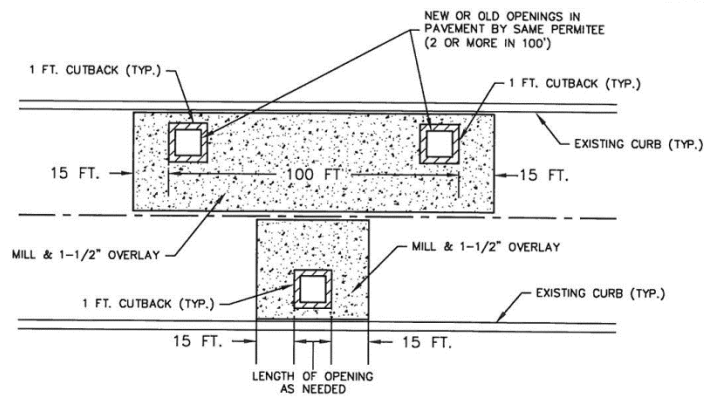
NOTES:

1. REGARDLESS OF PAVEMENT AGE, MILL AND 1-1/2" OVERLAY 15' ON EITHER SIDE OF EXCAVATION.
2. ALL PAVEMENT MARKINGS THAT ARE COVERED OR REMOVED SHALL BE RETURNED TO THEIR FORMER LOCATION(S).

LONGITUDINAL OPENINGS
(TYPICALLY FOR MAIN LINE INSTALLATIONS
OR SECTIONAL REPLACEMENT(S))

GENERAL NOTES:

1. ALL MATERIALS USED AND INSTALLATION PROCEDURES SHALL CONFORM TO PennDOT PUB. 408 MOST RECENT EDITION.
2. TWO (2) YEAR GUARANTEE REQUIRED FOR ALL PERMANENT RESTORATION (SEE MUNICIPAL ORDINANCE).



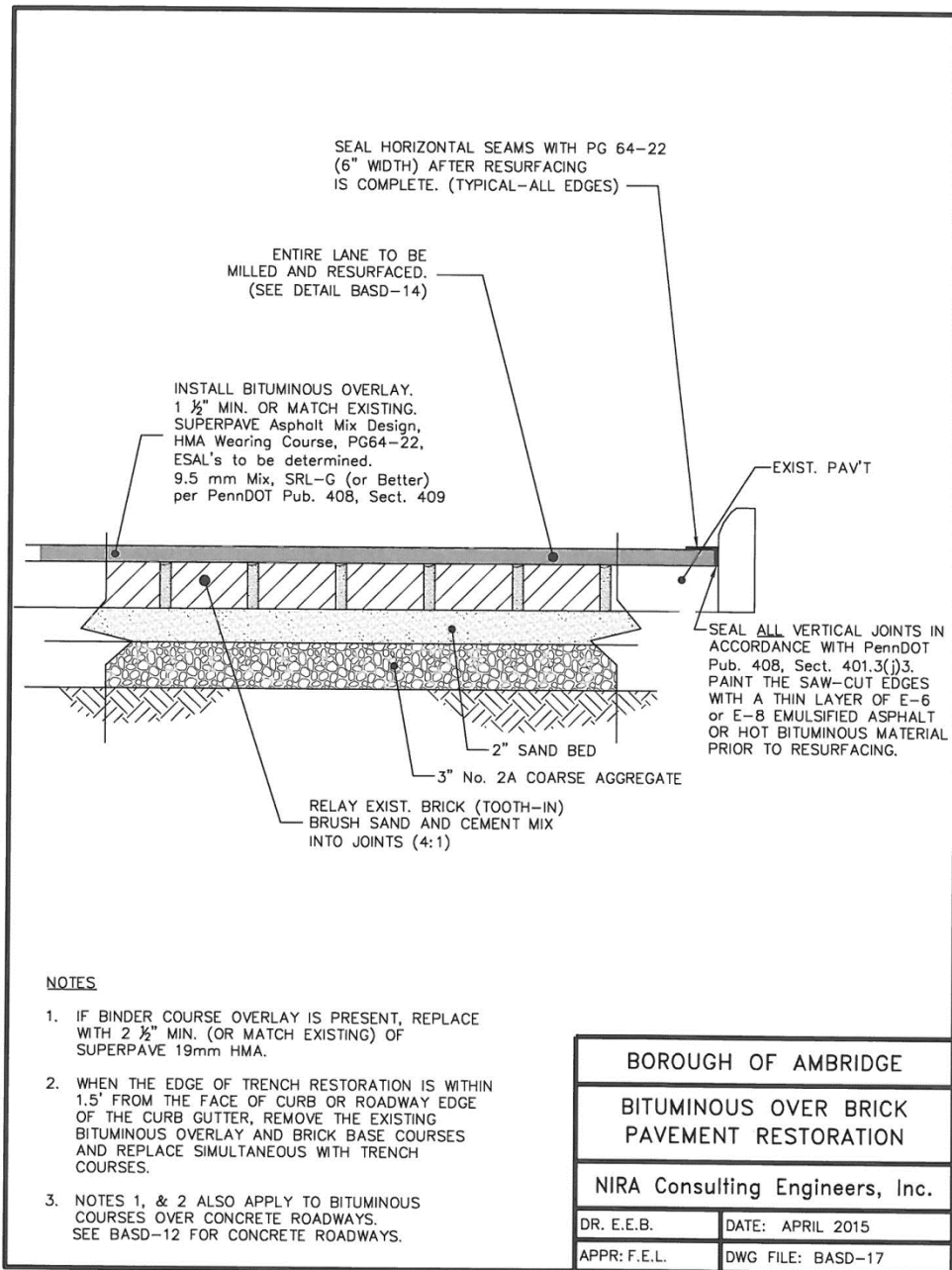
TRANSVERSE OPENINGS
(TYPICALLY FOR SPOT REPAIRS
OR SERVICE CONNECTIONS)

NOTES:

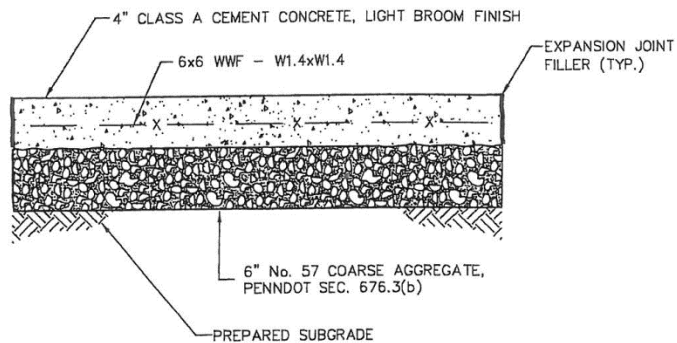
1. REGARDLESS OF PAVEMENT AGE, WHEN TWO OR MORE OPENINGS (NEW OR OLD, BY SAME PERMITTEE) HAVE BEEN MADE WITHIN 100 FEET IN THE SAME LANE, THE ENTIRE LANE SHALL BE MILLED AND OVERLAID (1-1/2" MIN. DEPTH) FOR THE LENGTH OF THE ROADWAY BETWEEN OPENINGS.
2. FOR OPENINGS OR PATCHES WITHIN TWO (2) FEET OF THE STREET CENTERLINE, THE 1-1/2" MILL AND OVERLAY MUST EXTEND THE ENTIRE STREET WIDTH.
3. ALL PAVEMENT MARKINGS THAT ARE COVERED OR REMOVED SHALL BE RETURNED TO THEIR FORMER LOCATION(S).
4. SEE DETAIL BASD-10 FOR KEYWAY REQUIREMENTS ASSOCIATED WITH BITUMINOUS PAVEMENT REPLACEMENT.

BOROUGH OF AMBRIDGE	
STANDARD BITUMINOUS PAVEMENT REPLACEMENT DETAIL	
NIRA Consulting Engineers, Inc.	
DR. CPS	DATE: APRIL 2015
APPR: F.E.L.	DWG FILE: BASD-14

AMBRIDGE CODE



STREETS AND SIDEWALKS



STANDARD SIDEWALK REPLACEMENT/INSTALLATION DETAIL

NOTES:

1. SIDEWALK WIDTH - 5'-0", REPLACE LENGTH JOINT TO JOINT
2. FORM OUTSIDE EDGES AND JOINTS WITH 1/4" RADIUS EDGING TOOL.
3. FORM TRANSVERSE DUMMY JOINTS @ 5 FOOT INTERVALS, APPROX. 1/8" WIDE AND AT LEAST 1 INCH DEEP
4. WHEN BUTTING INTO EXISTING CONCRETE, SAW CUT CONCRETE AND USE 1/2" PREMOLDED EXPANSION FILLER FULL DEPTH OF SIDEWALK.
5. EXPANSION JOINT @ 20'-0" MAX. SPACING. SEAL JOINTS WITH APPROVED CAULKING MATERIAL.
6. PROTECT WET/NEW CONCRETE FROM FREEZING
7. **OPTIONAL:** "FIBERMESH" PARTICLE REINFORCEMENT
8. **OPTIONAL:** CONCRETE CURING COMPOUND
9. WHENEVER POSSIBLE, SIDEWALK SURFACE SHOULD BE SLOPED FROM BACK TO FRONT AT 1/4" per FOOT TO DRAIN TOWARDS STREET

BOROUGH OF AMBRIDGE

STANDARD SIDEWALK
REPLACEMENT/INSTALLATION
DETAIL

NIRA Consulting Engineers, Inc.

DR. E.E.B.

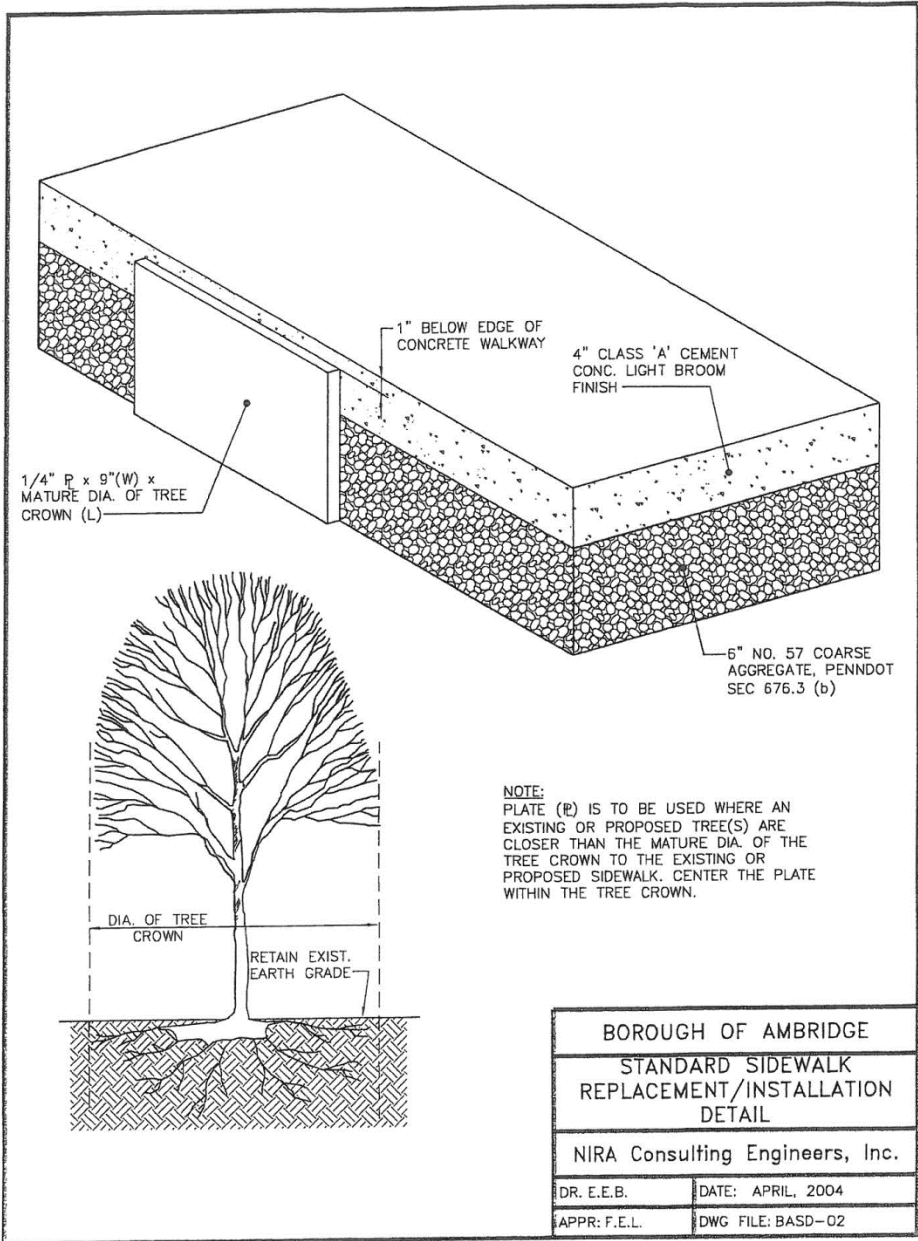
DATE: APRIL, 2004

REVISED FEB. 2011

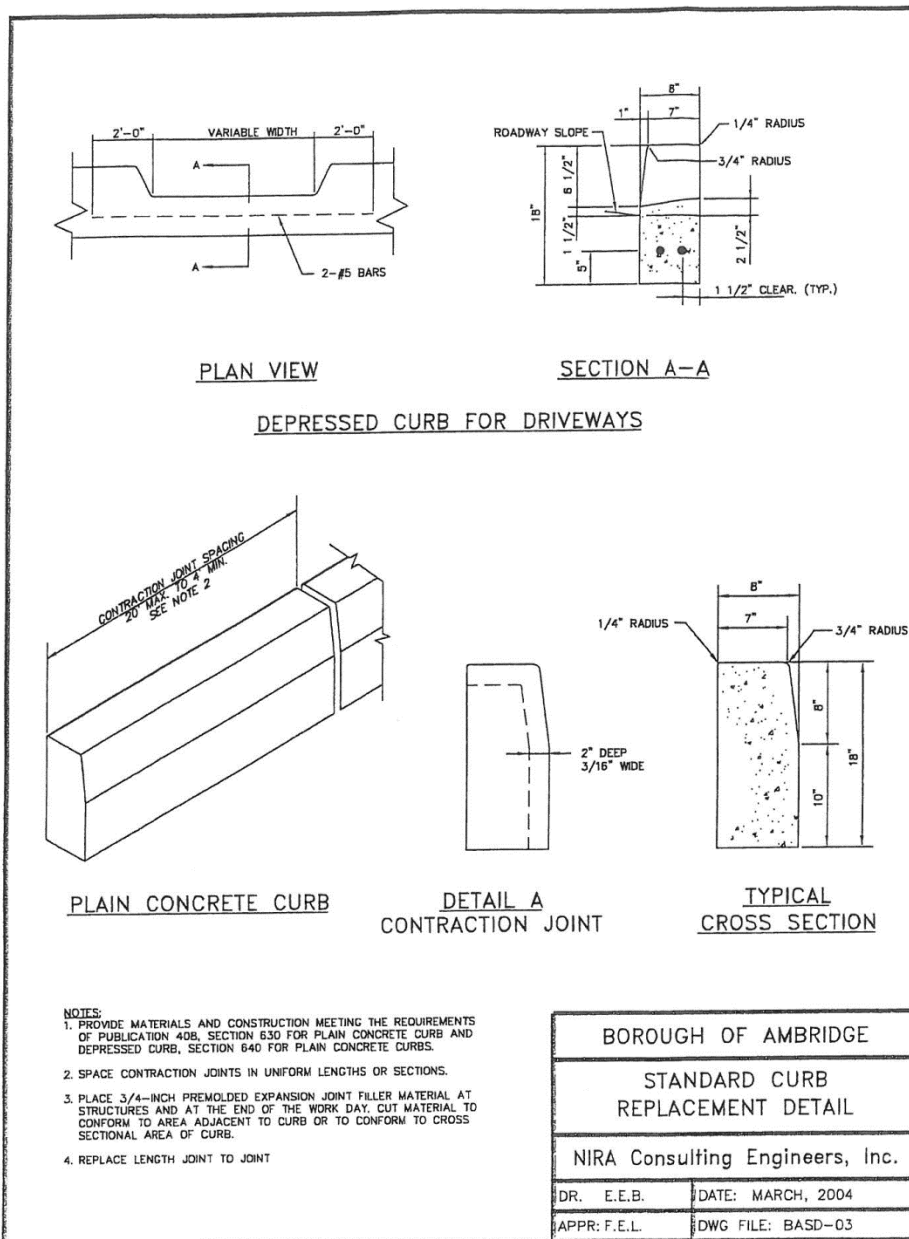
APPR: F.E.L.

DWG FILE: BASD-01

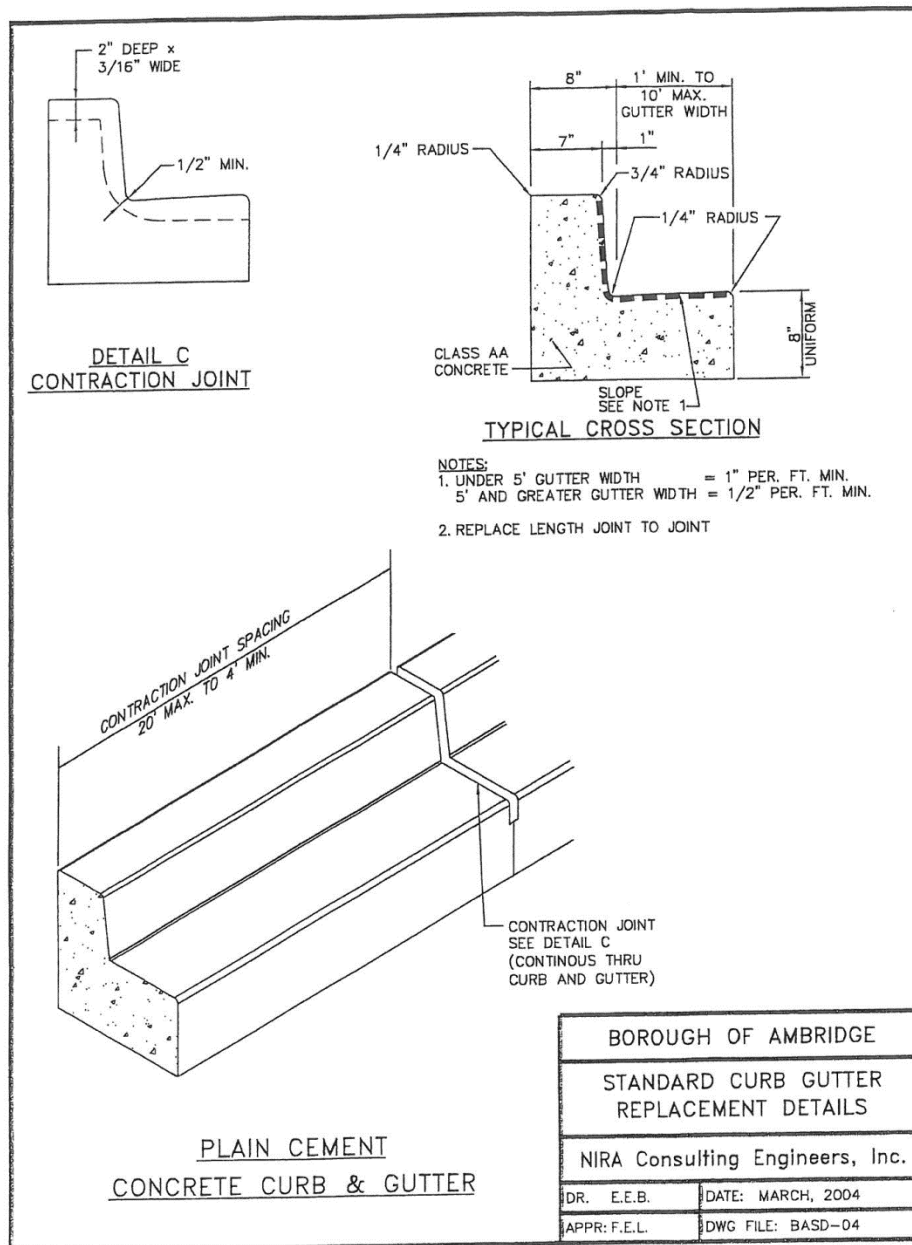
AMBRIDGE CODE



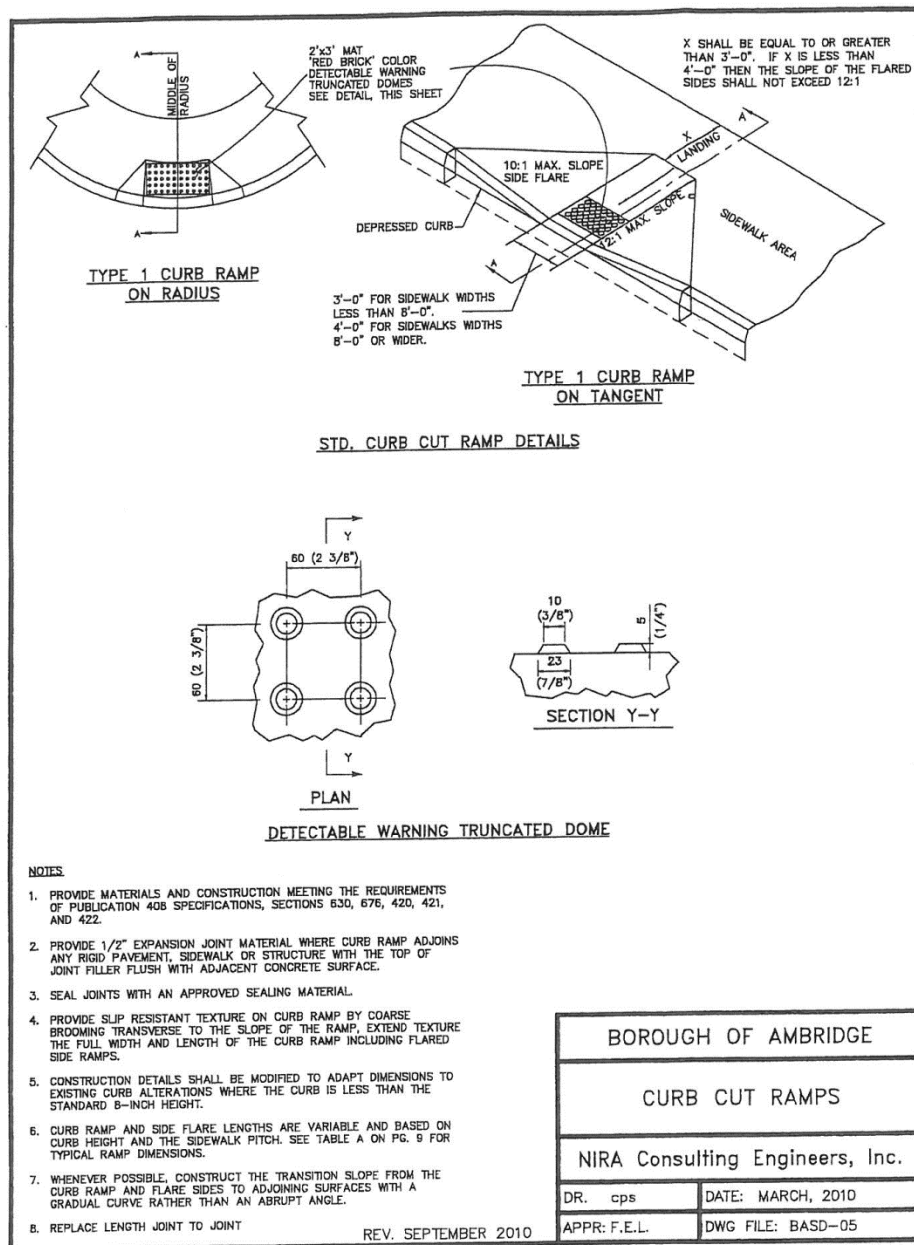
STREETS AND SIDEWALKS



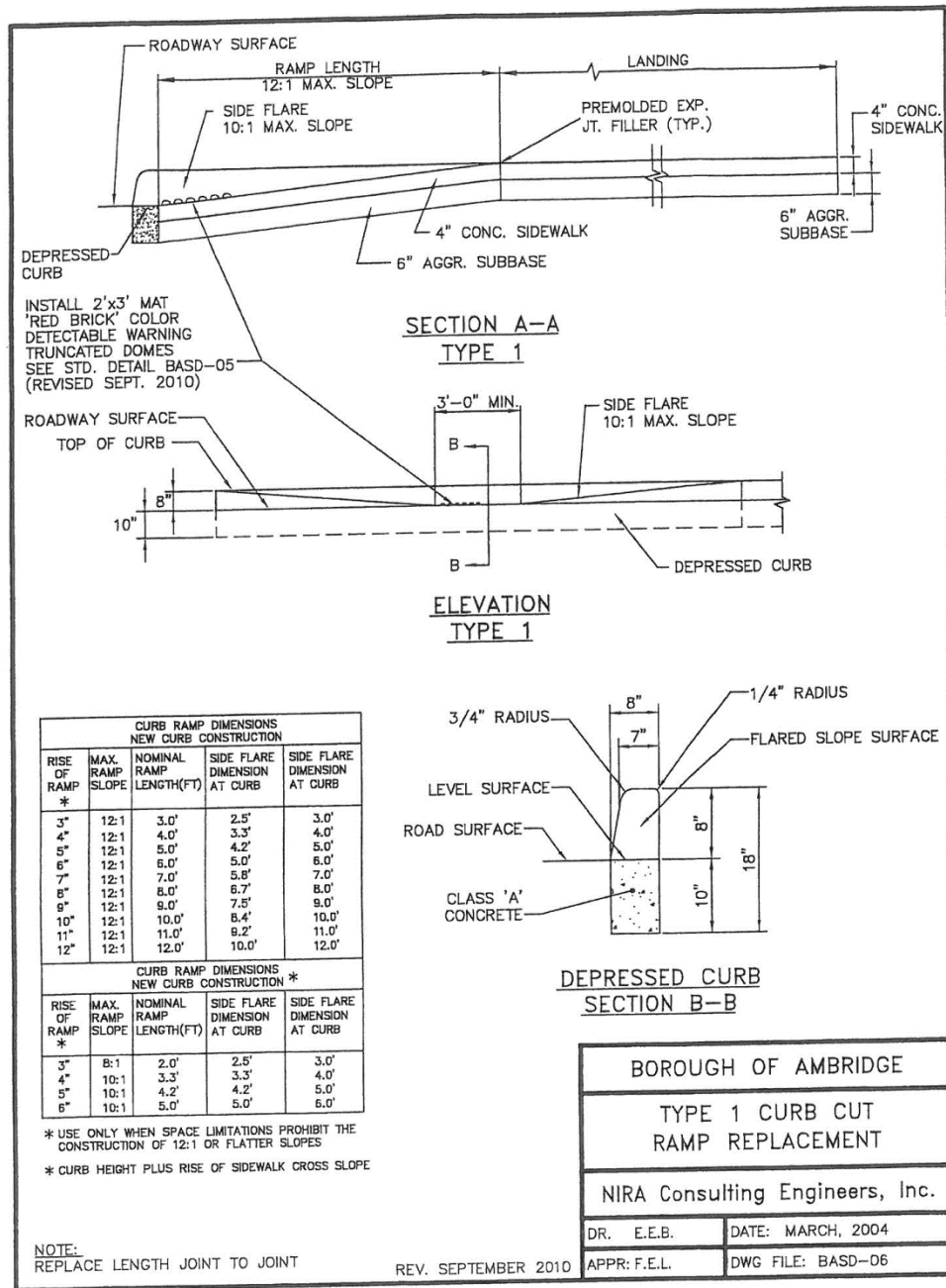
AMBRIDGE CODE



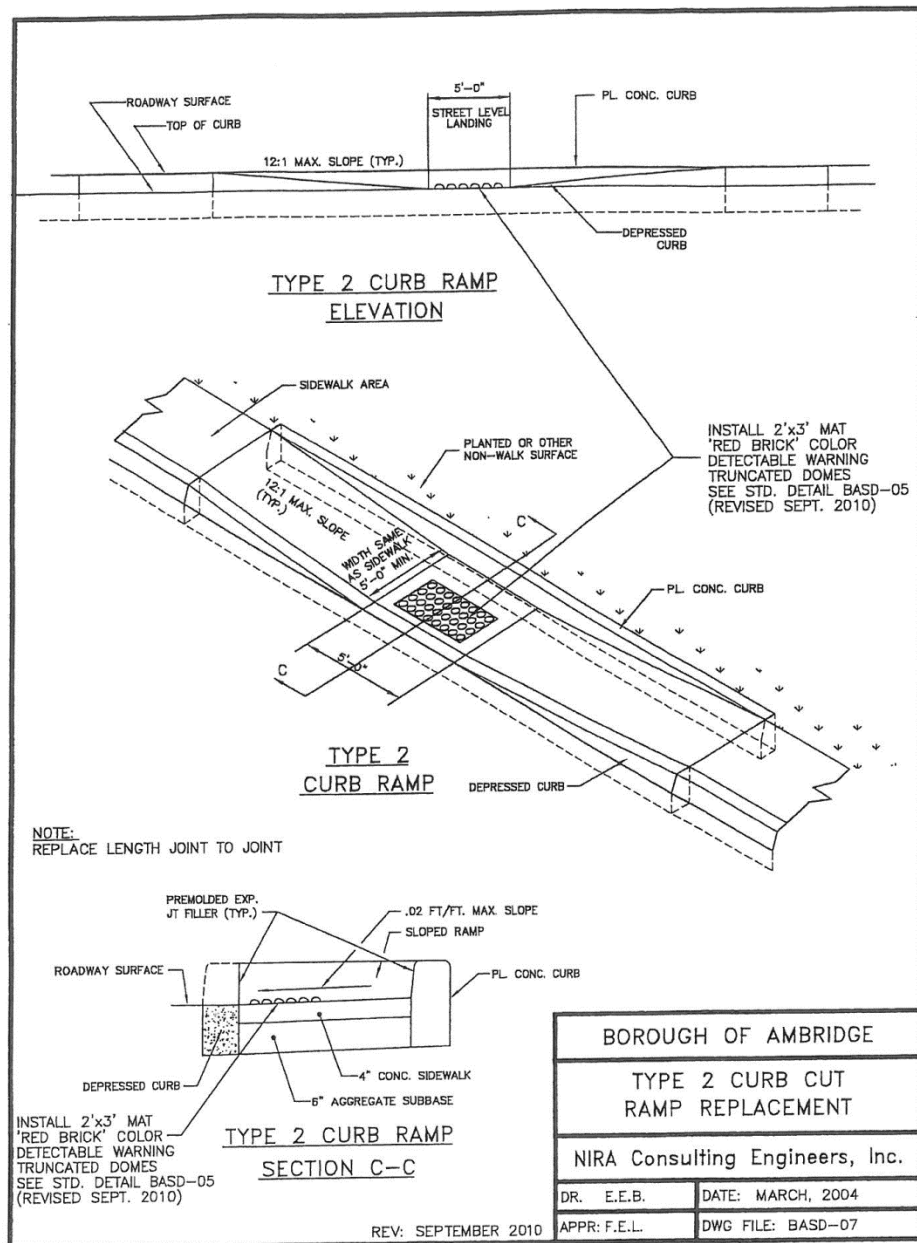
STREETS AND SIDEWALKS



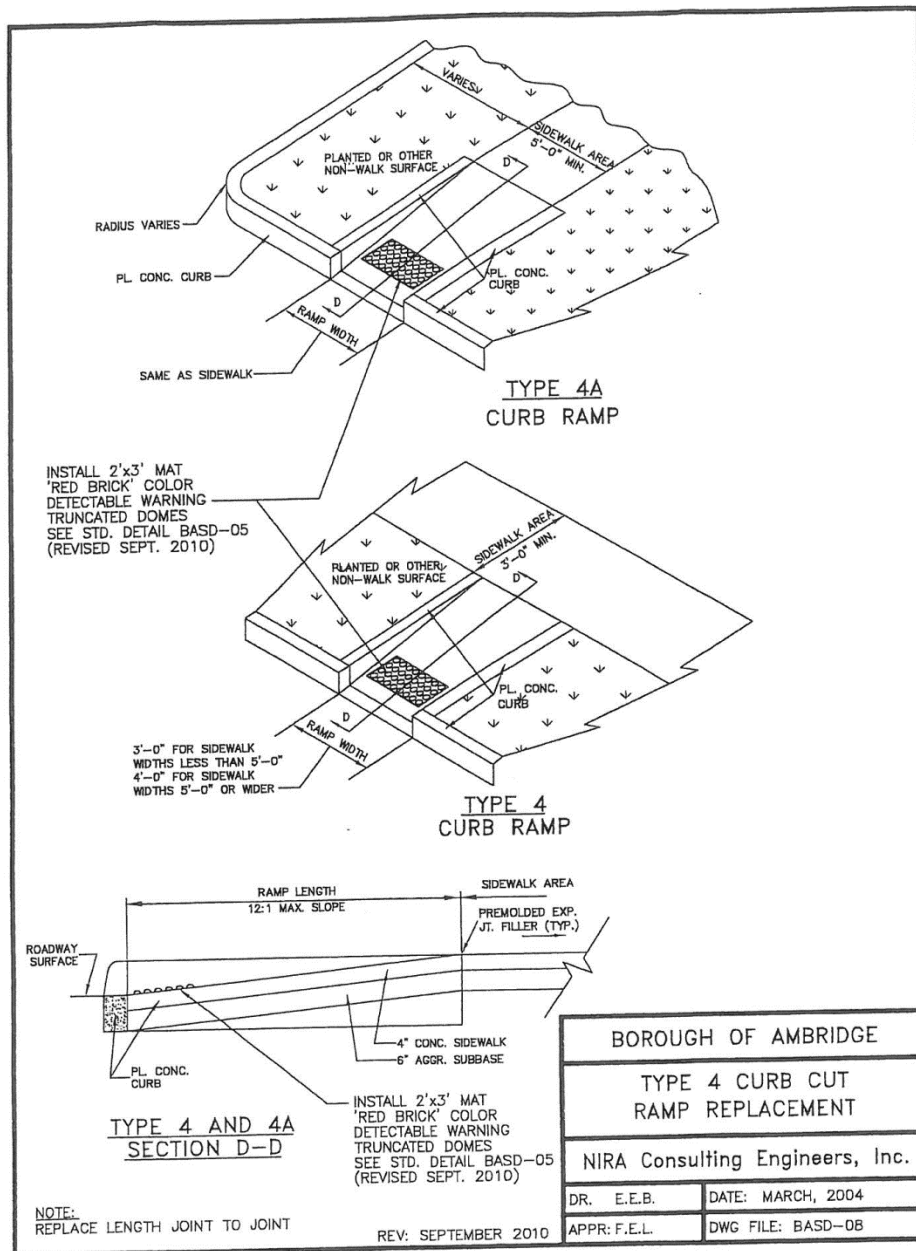
AMBRIDGE CODE



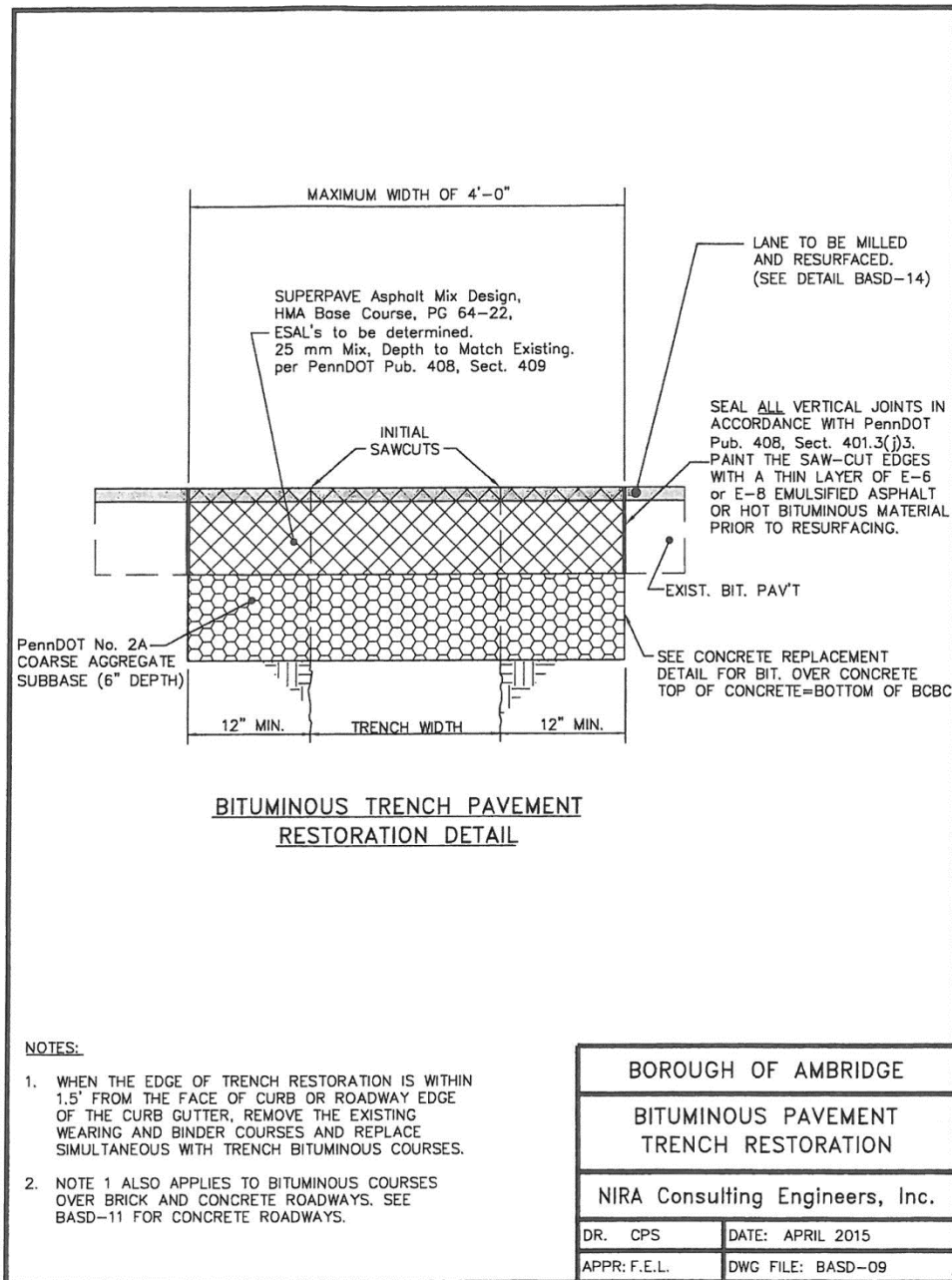
STREETS AND SIDEWALKS



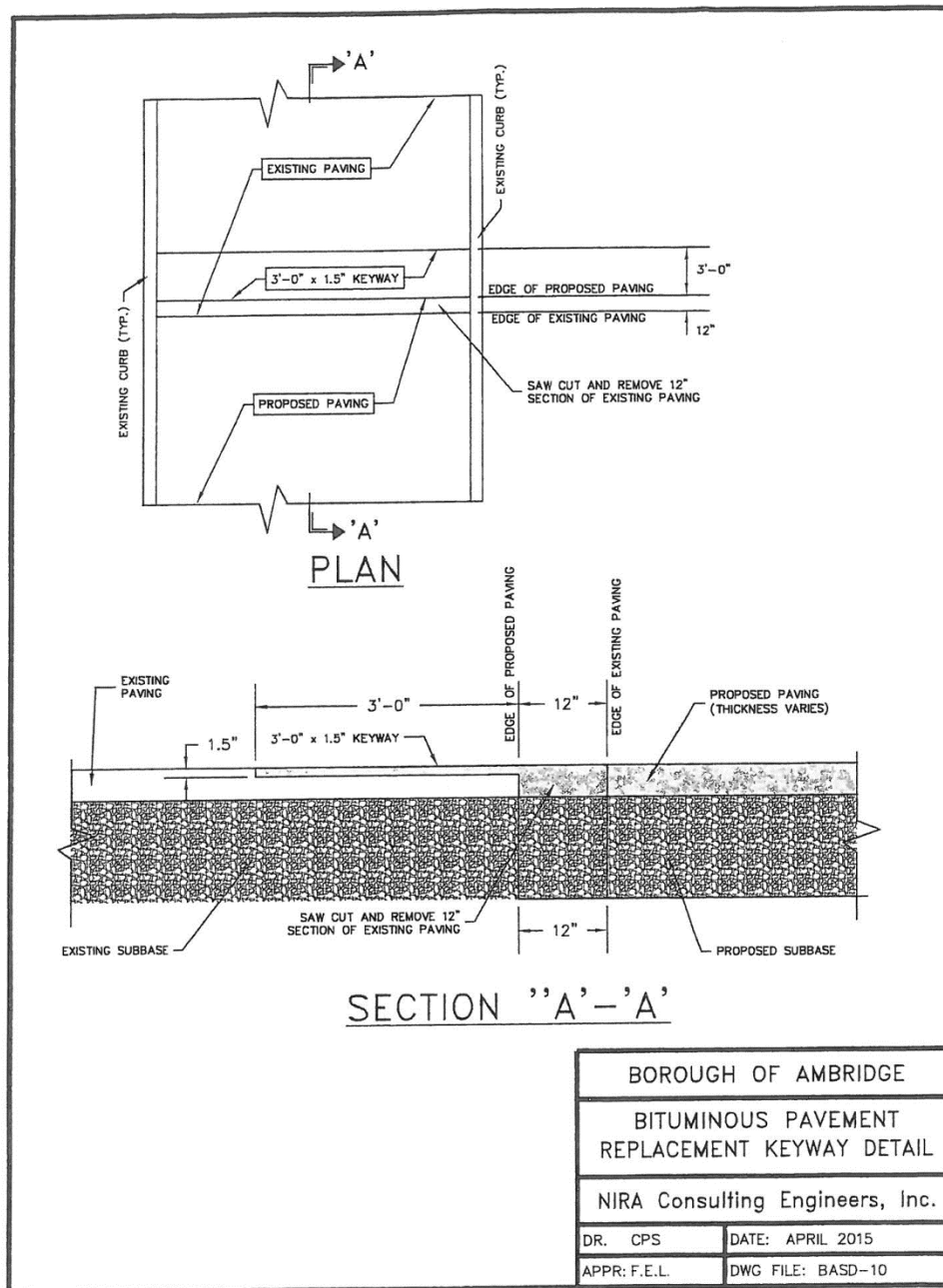
AMBRIDGE CODE



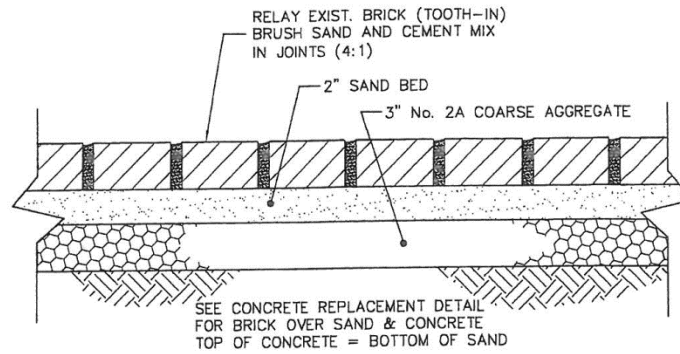
STREETS AND SIDEWALKS



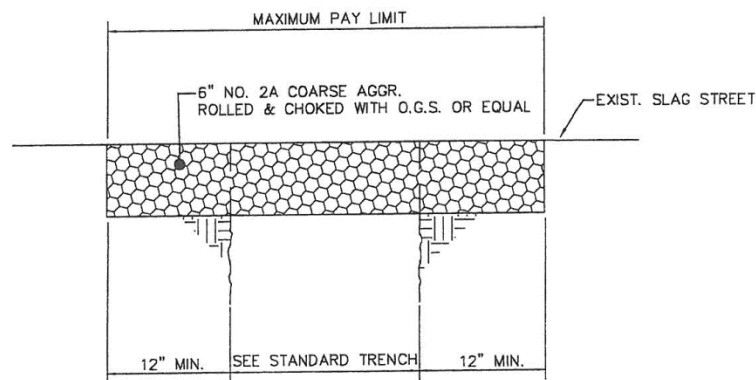
AMBRIDGE CODE



STREETS AND SIDEWALKS



BRICK PAVEMENT RESTORATION



SLAG PAVEMENT RESTORATION

NOTE:
1. WHEN THE EDGE OF TRENCH RESTORATION IS
WITHIN 3' FROM THE FACE OF CURB OR
ROADWAY EDGE OF CURB GUTTER, REMOVE
BRICK AND CONCRETE LEVELING COURSE.
REPLACE CONCRETE SIMULTANEOUS WITH
CONCRETE TRENCH RESTORATION.

BOROUGH OF AMBRIDGE

BRICK & SLAG PAVEMENT
TRENCH RESTORATION

NIRA Consulting Engineers, Inc.

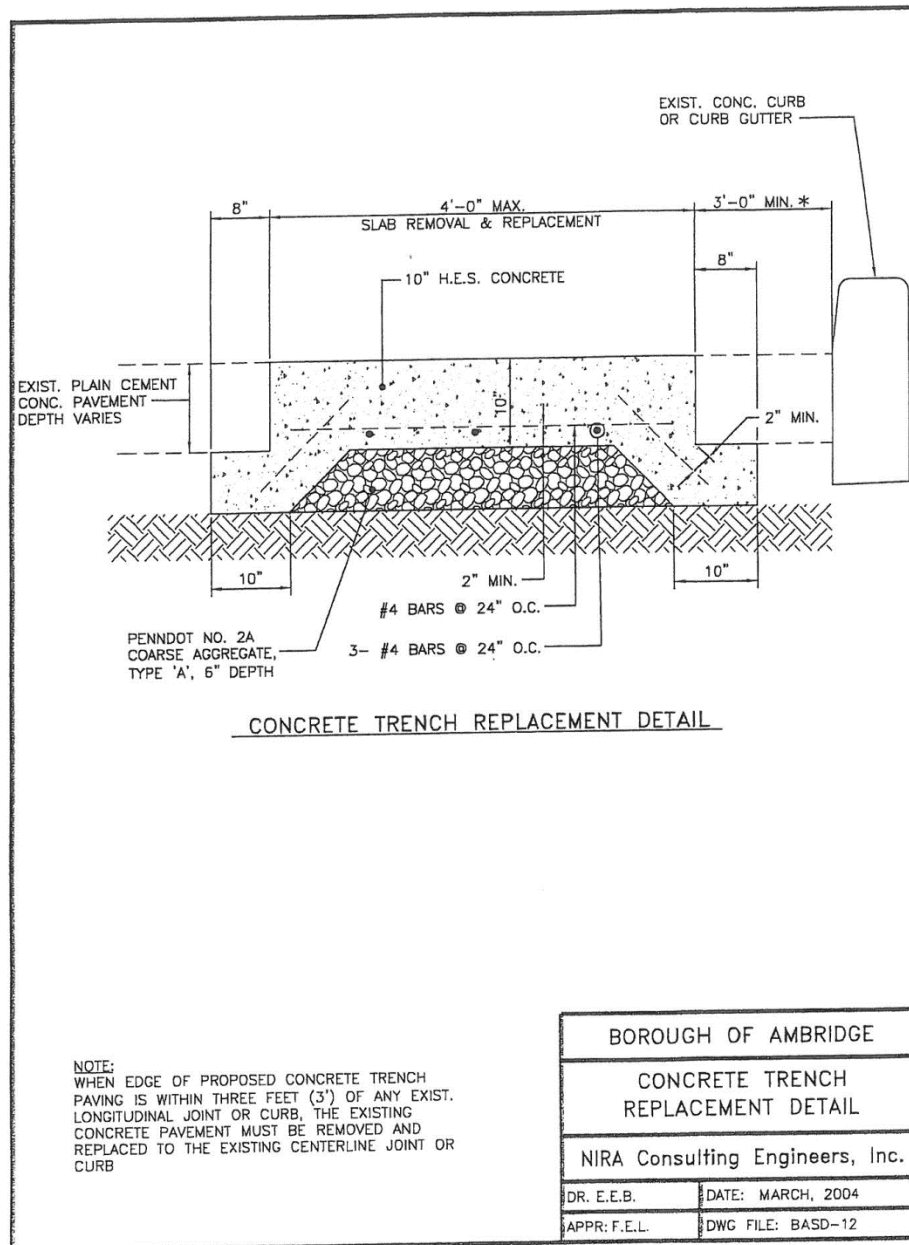
DR. E.E.B.

DATE: MAY, 2004

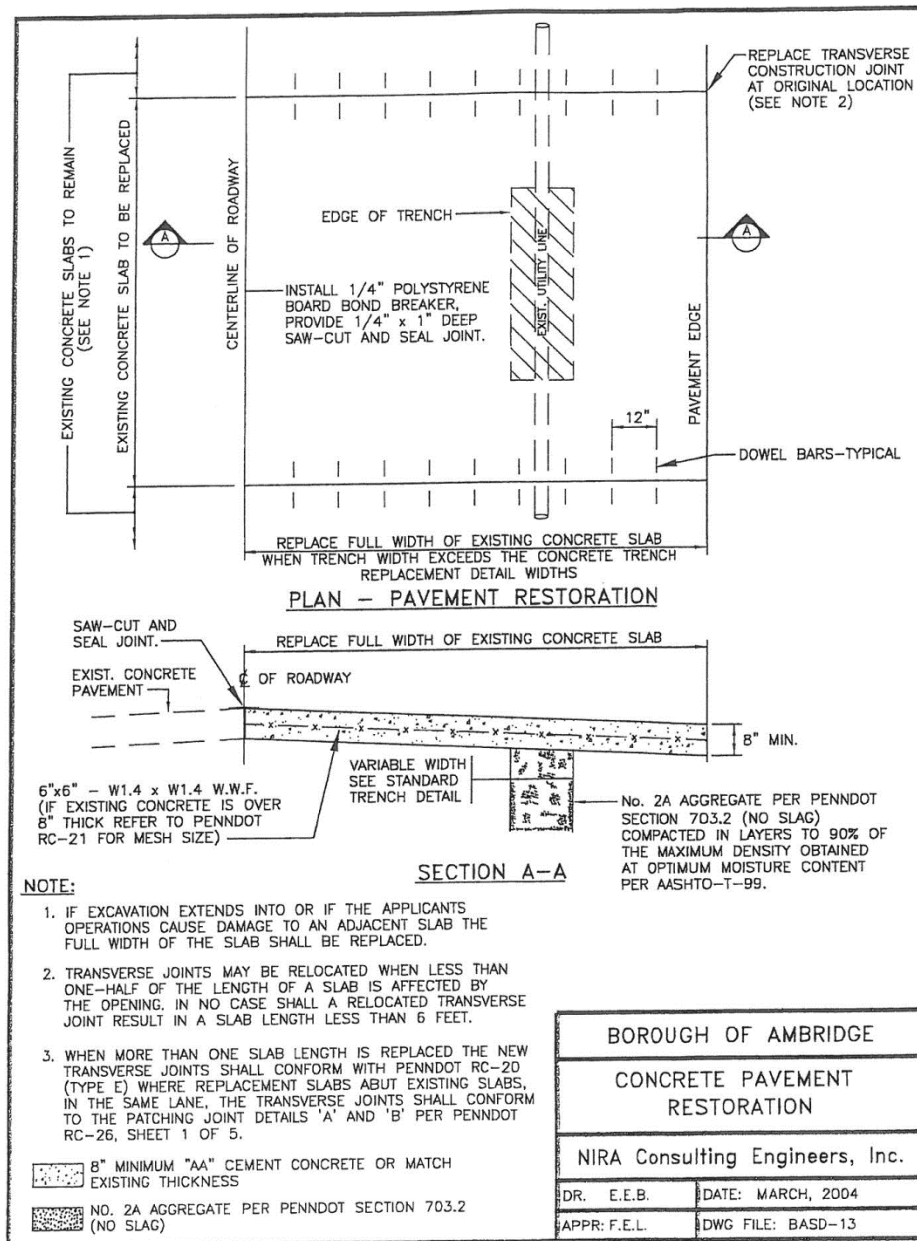
APPR: F.E.L.

DWG FILE: BASD-11

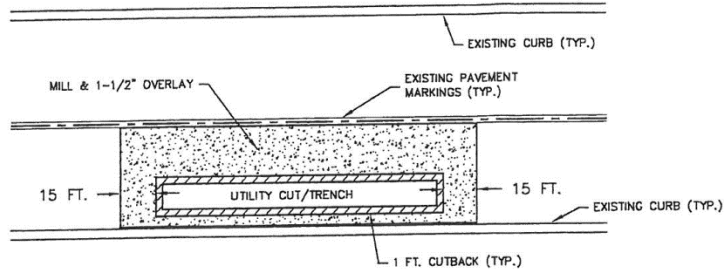
AMBRIDGE CODE



STREETS AND SIDEWALKS



AMBRIDGE CODE



NOTES:

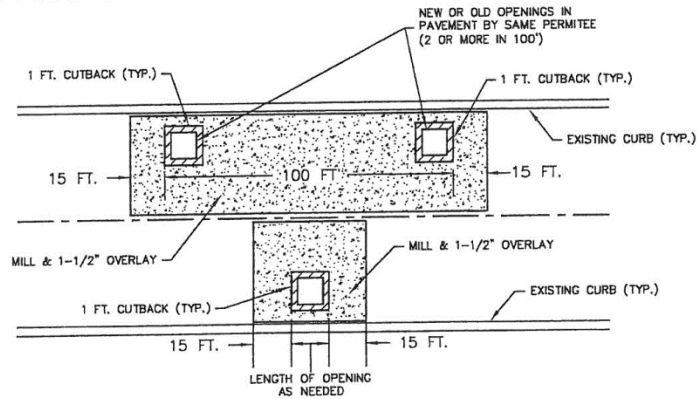
1. REGARDLESS OF PAVEMENT AGE, MILL AND 1-1/2" OVERLAY 15' ON EITHER SIDE OF EXCAVATION.
2. ALL PAVEMENT MARKINGS THAT ARE COVERED OR REMOVED SHALL BE RETURNED TO THEIR FORMER LOCATION(S).

LONGITUDINAL OPENINGS

(TYPICALLY FOR MAIN LINE INSTALLATIONS OR SECTIONAL REPLACEMENT(S))

GENERAL NOTES:

1. ALL MATERIALS USED AND INSTALLATION PROCEDURES SHALL CONFORM TO PennDOT PUB. 408 MOST RECENT EDITION.
2. TWO (2) YEAR GUARANTEE REQUIRED FOR ALL PERMANENT RESTORATION (SEE MUNICIPAL ORDINANCE).



TRANSVERSE OPENINGS

(TYPICALLY FOR SPOT REPAIRS OR SERVICE CONNECTIONS)

NOTES:

1. REGARDLESS OF PAVEMENT AGE, WHEN TWO OR MORE OPENINGS (NEW OR OLD, BY SAME PERMITEE) HAVE BEEN MADE WITHIN 100 FEET IN THE SAME LANE, THE ENTIRE LANE SHALL BE MILLED AND OVERLAID (1-1/2" MIN. DEPTH) FOR THE LENGTH OF THE ROADWAY BETWEEN OPENINGS.
2. FOR OPENINGS OR PATCHES WITHIN TWO (2) FEET OF THE STREET CENTERLINE, THE 1-1/2" MILL AND OVERLAY MUST EXTEND THE ENTIRE STREET WIDTH.
3. ALL PAVEMENT MARKINGS THAT ARE COVERED OR REMOVED SHALL BE RETURNED TO THEIR FORMER LOCATION(S).
4. SEE DETAIL BASD-10 FOR KEYWAY REQUIREMENTS ASSOCIATED WITH BITUMINOUS PAVEMENT REPLACEMENT.

BOROUGH OF AMBRIDGE

STANDARD BITUMINOUS
PAVEMENT REPLACEMENT DETAIL

NIRA Consulting Engineers, Inc.

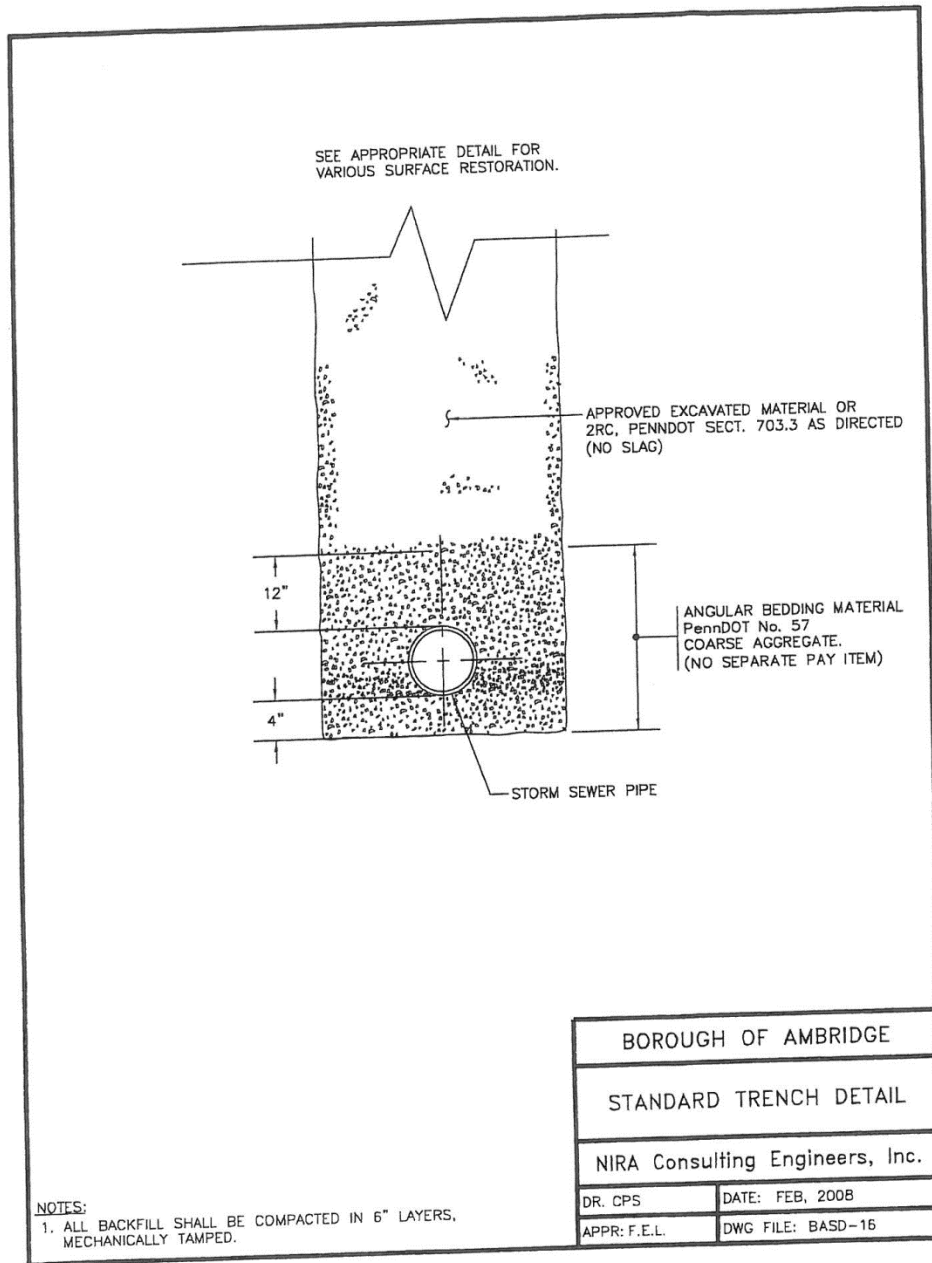
DR. CPS

DATE: APRIL 2015

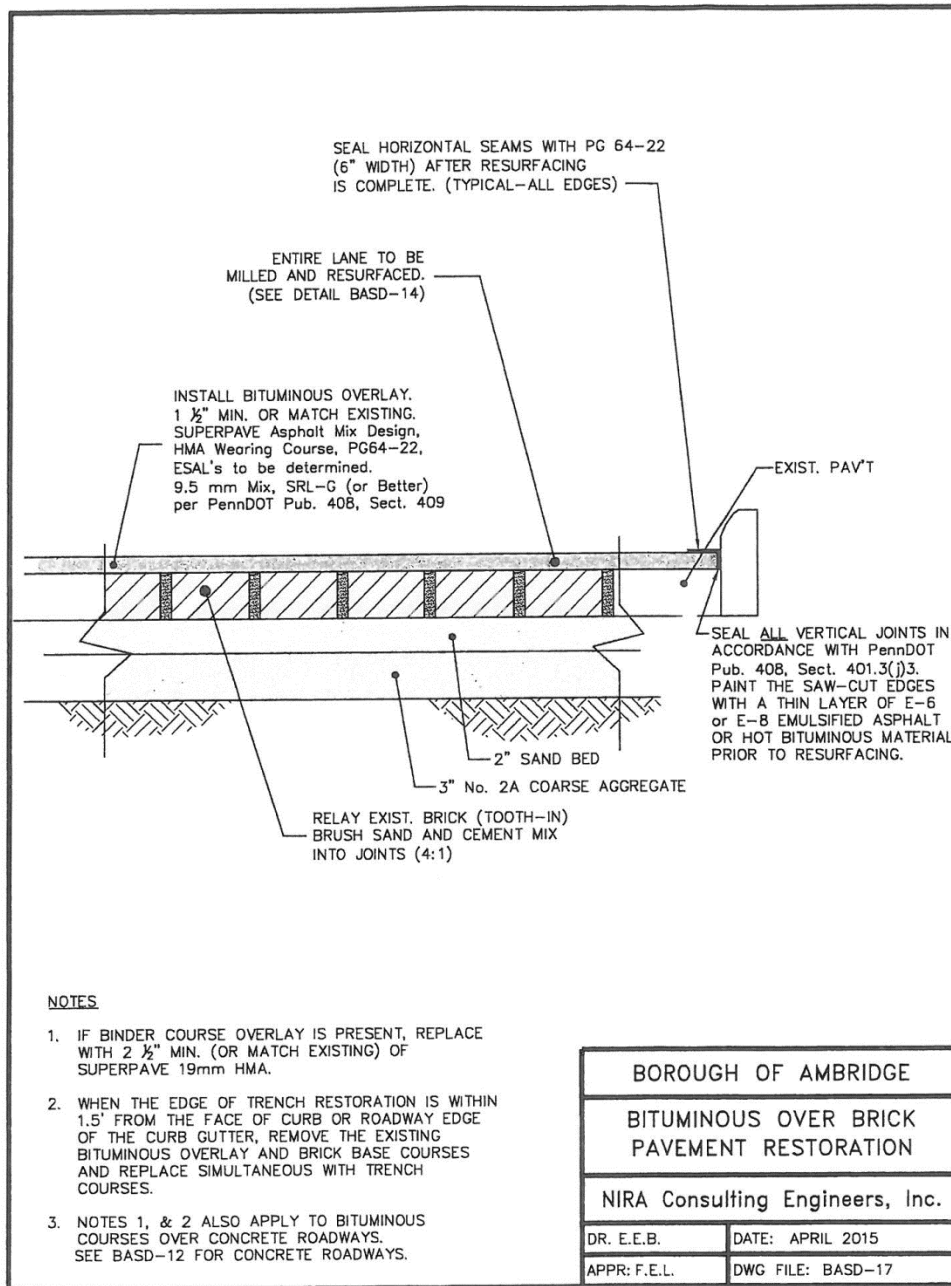
APPR: F.E.L.

DWG FILE: BASD-14

STREETS AND SIDEWALKS



AMBRIDGE CODE



STREETS AND SIDEWALKS

