



# ARTIFICIAL INTELLIGENCE AND ITS IMPACT ON ARCHITECTS

Empowering Design, Enhancing Delivery, and Enabling  
Intelligent Resourcing in the AEC Industry



## Executive Summary

Artificial Intelligence (AI) is reshaping architecture as profoundly as CAD and BIM once did. No longer limited to conceptual experiments, AI is now being embedded into every stage of the architectural workflow –from early-stage design exploration to project management, documentation, and facility lifecycle optimization.

For architects, this transformation brings both promise and challenge. AI tools can automate routine tasks, accelerate design iterations, and enhance visualization and coordination. But they also demand a rethinking of professional roles, workflows, and the skillsets that define architectural value.

This whitepaper explores how AI is changing architecture today, what lies ahead, and how firms can strategically embrace these technologies to enhance—not replace—the human creativity at the core of design.

# 1. The AI Revolution in Context

Architecture has always been driven by technological evolution:

- 1980s–1990s: CAD digitized drafting.
- 2000s: BIM integrated 3D modeling and data.
- 2010s: Cloud platforms enabled collaboration.
- 2020s: AI is driving automation, prediction, and augmentation.

The architectural profession stands at a crossroads similar to the dawn of BIM: firms that adapt will gain efficiency, insight, and scalability; those that resist risk being left behind.



## 2. Key Areas Where AI is Transforming Architectural Practice

### 2.1 Concept and Design Generation

AI-powered tools like Midjourney, DALL·E, and Autodesk Forma allow architects to rapidly visualize design intent, massing studies, and material combinations. Generative AI can produce hundreds of variations within minutes—enabling exploration that would once take days or weeks.

Impact: Architects spend less time producing initial concepts and more time refining, contextualizing, and aligning with the client's vision.

## 2.2 Performance and Simulation

AI-driven analysis tools can predict energy use, daylight penetration, airflow, and structural behavior during early design stages. These tools allow architects to optimize sustainability and performance outcomes with data-driven confidence.

Impact: Design becomes proactive and predictive rather than reactive and corrective.

## 2.3 Documentation and Detailing

Machine learning models integrated with Revit, AutoCAD, and other BIM tools can automate repetitive tasks—such as annotation, detail placement, and clash detection. AI can identify drawing inconsistencies or errors before they reach the construction site.

Impact: Improved accuracy, fewer RFIs, and faster production drawing timelines.





## 2.4 Visualization and Communication

AI-enhanced rendering engines can turn raw models into photo-realistic imagery in seconds. Natural language prompts enable even non-technical users to visualize design intent—bridging the gap between architects, clients, and stakeholders.

Impact: Faster decision-making and stronger client engagement.

## 2.5 Project Management and Cost Control

Predictive analytics can estimate timelines, costs, and risks with remarkable accuracy. AI-based systems are increasingly used to monitor project health, schedule adherence, and budget forecasts through real-time data analysis.

Impact: Greater transparency, proactive problem-solving, and better profitability.

## 2.6 Knowledge Management and Learning

AI tools are helping firms index, search, and reuse knowledge—ranging from past project details to design precedents. These systems can recommend materials, assemblies, or design approaches based on historical project success.

Impact: Institutional knowledge becomes actionable intelligence.

### 3. Challenges and Ethical Considerations

While the potential of AI is vast, architecture faces unique considerations:

- Intellectual Property: Who owns AI-generated designs?
- Bias and Authenticity: How do algorithms reflect cultural or contextual bias?
- Job Redefinition: Routine roles may shrink, while creative and strategic roles expand.
- Training Needs: Architects must learn to collaborate with, not compete against, AI.

The profession's challenge is to ensure that technology serves human-centered design—not the other way around.

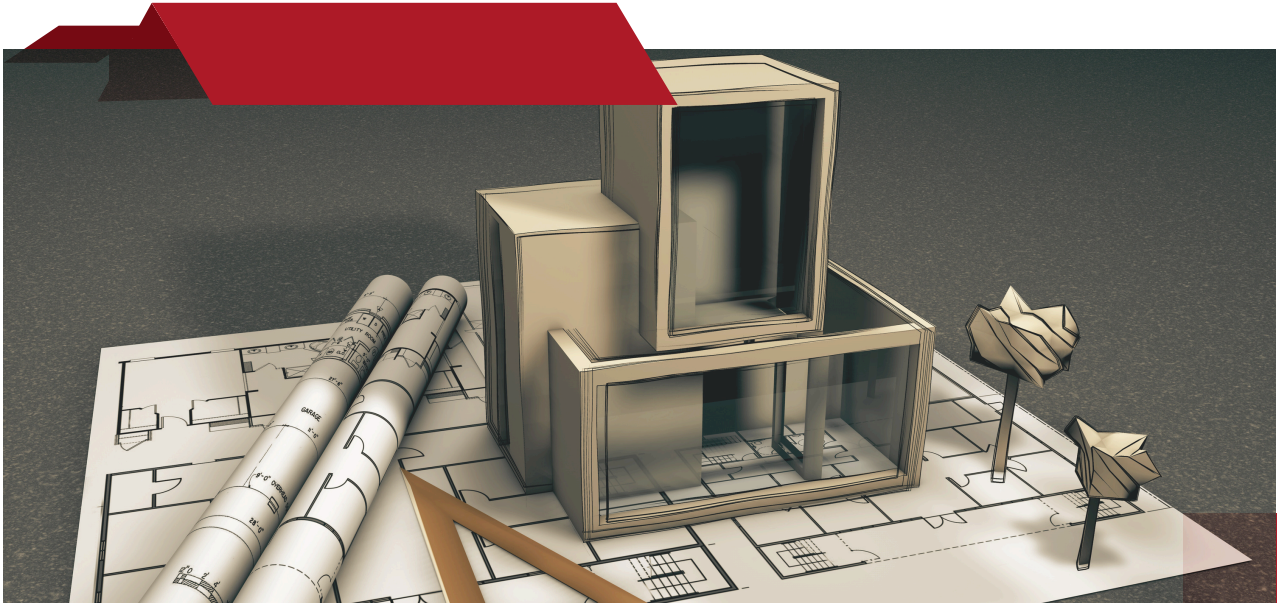
### 4. The Future Architectural Practice: Hybrid Intelligence

The architectural firm of the future will blend human creativity with machine precision.

- Designers will act as curators and strategists.
- AI assistants will handle generative tasks, data analysis, and production automation.
- Project managers will use predictive dashboards to monitor progress.
- Clients will experience immersive, AI-enhanced design journeys.

This hybrid model allows smaller firms to scale impact, larger firms to streamline workflows, and all architects to focus on what humans do best: empathy, judgment, and vision.





## 5. The ADDMORE Perspective: Intelligent Resourcing for the AI Age

At ADDMORE Services, we recognize that technology alone isn't transformation—it's the people and processes behind it that deliver results.

Our Intelligent Resourcing and Professional Offshore Talent models allow firms to integrate skilled BIM technicians, architectural drafters, and visualization artists—trained in the latest AI-enhanced tools—directly into their teams.

By combining onshore oversight with offshore production, ADDMORE enables firms to:

- Adopt AI-augmented workflows without increasing fixed overheads.
- Scale up for projects while maintaining design quality.
- Access global expertise in Revit, AutoCAD, BIM coordination, and rendering enhanced by AI-driven automation.

AI is not replacing architects. It's empowering them—when integrated intelligently.

## 6. Conclusion: The Architect's New Superpower

AI is not a threat to architecture—it's the next evolution of the profession. It can free architects from tedious tasks, enhance design quality, and improve project outcomes. The key is strategic adoption: investing in training, integrating AI tools thoughtfully, and leveraging hybrid resourcing models like those offered by ADDMORE to remain agile and competitive.

The future belongs to architects who design with intelligence—and build with insight.



## About ADDMORE Services LLC

ADDMORE Services provides specialist support to Architects, Interior Designers, and Contractors worldwide. With offices in Las Vegas and a professional offshore team in the Philippines, we deliver:





- AutoCAD & Revit production support
- BIM modeling and coordination
- Renderings & visualizations
- Quantity take-offs & estimating
- Project management & consultancy

We help firms grow smarter, not larger—adding capacity without increasing fixed costs.



Visit [www.addmoreservices.com](http://www.addmoreservices.com) or contact Colin Addley at [caddley@addmoreservices.com](mailto:caddley@addmoreservices.com) to discuss how Intelligent Resourcing can future-proof your practice.

The future belongs to architects who design with intelligence—and build with insight.

-  **Address** : 1980 Festival Plaza Dr., South Summerlin Suite 300, Las Vegas, NV 89135 USA
-  **Email** : [hello@addmoreservices.com](mailto:hello@addmoreservices.com)
-  **Website** : [www.addmoreservices.com](http://www.addmoreservices.com)
-  **Phone** : (702) 751-3916, ext. 3916