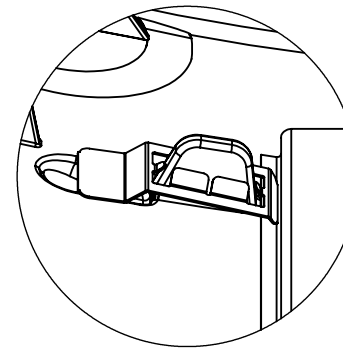
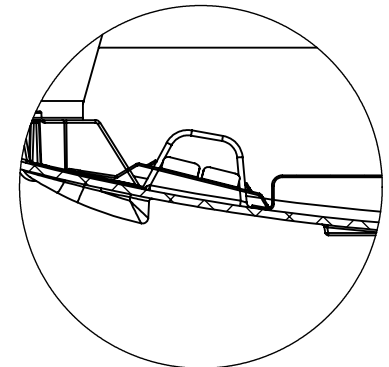


DETAIL A
SCALE 1 : 2



DETAIL B
SCALE 1 : 2



- The **CT-2XDAR-CLIP** is installed over the molded bosses inside the CT4s Housing.
- Note the orientation of the **CT-2XDAR-CLIP**.
- Will not hold down properly if installed otherwise.
- SLP suggested typical QTY is four.
- For Pendant Mount QTY is six.
- **CT4s-2XDAR (Driver Attachment Rail)**
- Use **CT-SCRW-UGT** for attaching drivers to rail.
- Mounting Centers (2 Rows): 8.90", 10.58", 16.38"

Notify SLP Engineering for suggestions of additional mounting centers.

UNLESS OTHERWISE
SPECIFIED:

DIMENSIONS ARE IN INCHES
TOLERANCES AS NOTED
FRACTIONAL $\pm 1/16"$
ANGULAR $\pm 1^\circ$
TWO PLACE DECIMAL $\pm .060$
THREE PLACE DECIMAL $\pm .030$

INTERPRET GEOMETRIC
TOLERANCING PER:

	NAME	DATE
DRAWN	-	xx/xx/xx
CHECKED	-	xx/xx/xx
ENG APPR.	-	xx/xx/xx
MFG APPR.	-	xx/xx/xx
Q.A.	-	xx/xx/xx
COMMENTS:		
....		

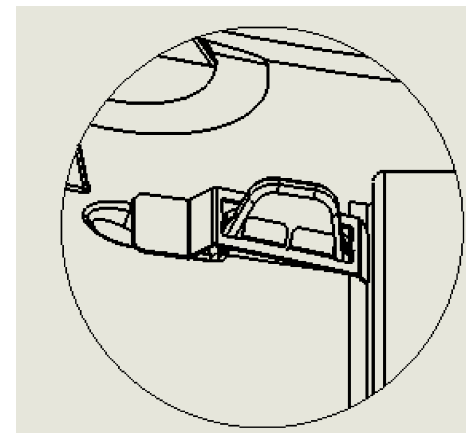
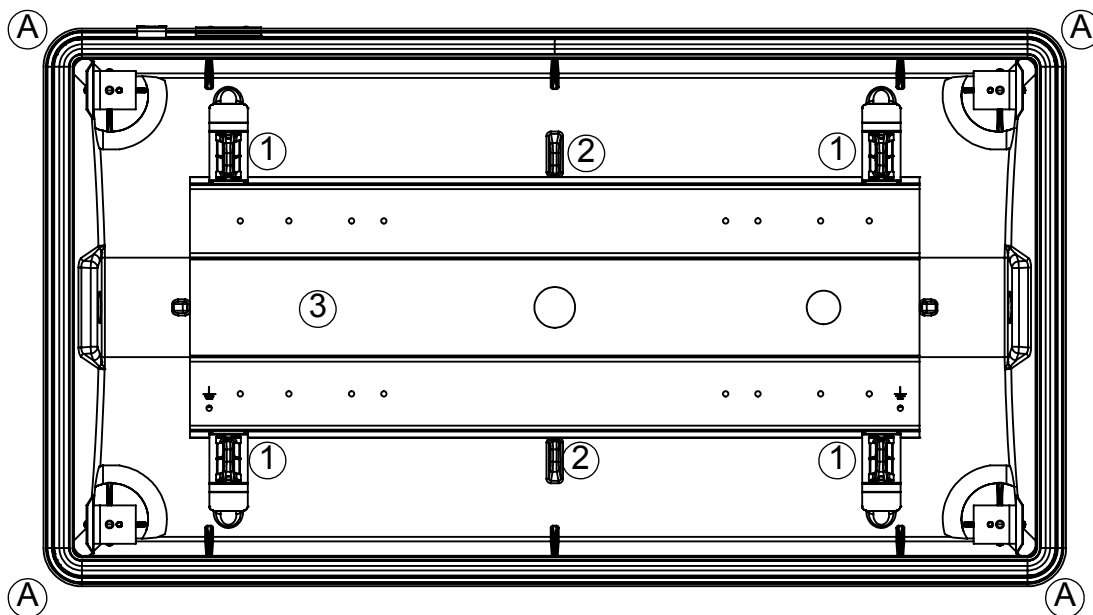
The information contained in this document is the confidential property of Koller Enterprises Inc. This information is to be used by the recipient only for the purpose of which it has been provided by Koller. This document and any information contained therein may not be reproduced or made available to any third party without the written authorization of Koller. No tooling to produce the product which is the subject of this document can be made without written authorization from Koller. Recipient's acceptance of this document is an acknowledgement of agreement to these terms.



1400 South Old Highway 141
Fenton, MO. 63026

PH (636) 600-4084 FX (636) 600-4108
www.SLPlighting.com

CT4s Internal Assembly Notes On CT4s-2XDAR and CT4s-2XDAR-CLIP			
Part Weight			
Material			
Finish			
Drawn By: CSO	DATE: 10/7/2015	SIZE A	Scale: 1:4
			REV. A



1	CT-2XDAR-CLIP	Typical CT4s-2XDAR Mounting
2	CT-2XDAR-CLIP	Additional For Pendant Mounting
3	CT4s-2XDAR	CT4s Driver Attachment Rail
A	CT4-GTRC / CT-SCRW	Retainer Clips and CT-SCRW

- The **CT-2XDAR-CLIP** is installed over the molded bosses inside the CT4s Housing.
- Note the orientation of the **CT-2XDAR-CLIP**.
- Will not hold down properly if installed otherwise.
- SLP suggested typical QTY is four.
- For Pendant Mount QTY is six.
- **CT4s-2XDAR (Driver Attachment Rail)**
- Use **CT-SCRW-UGT** for attaching drivers to rail.
- Mounting Centers (2 Rows): 8.90", 10.58", 16.38"

Notify SLP Engineering for suggestions of additional mounting centers.

UNLESS OTHERWISE SPECIFIED:

DIMENSIONS ARE IN INCHES
TOLERANCES AS NOTED
FRACTIONAL $\pm 1/16"$
ANGULAR $\pm 1^\circ$
TWO PLACE DECIMAL $\pm .060$
THREE PLACE DECIMAL $\pm .030$

INTERPRET GEOMETRIC TOLERANCING PER:

	NAME	DATE
DRAWN	-	xx/xx/xx
CHECKED	-	xx/xx/xx
ENG APPR.	-	xx/xx/xx
MFG APPR.	-	xx/xx/xx
Q.A.	-	xx/xx/xx
COMMENTS:		
....		

The information contained in this document is the confidential property of Koller Enterprises Inc. This information is to be used by the recipient only for the purpose of which it has been provided by Koller. This document and any information contained therein may not be reproduced or made available to any third party without the written authorization of Koller. No tooling to produce the product which is the subject of this document can be made without written authorization from Koller. Recipient's acceptance of this document is an acknowledgement of agreement to these terms.



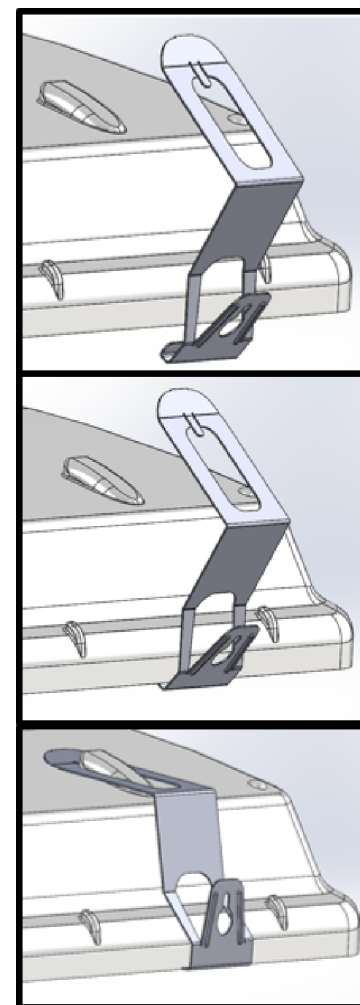
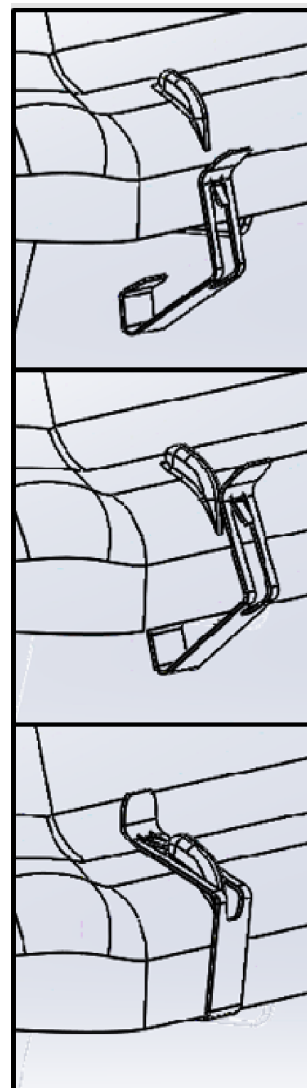
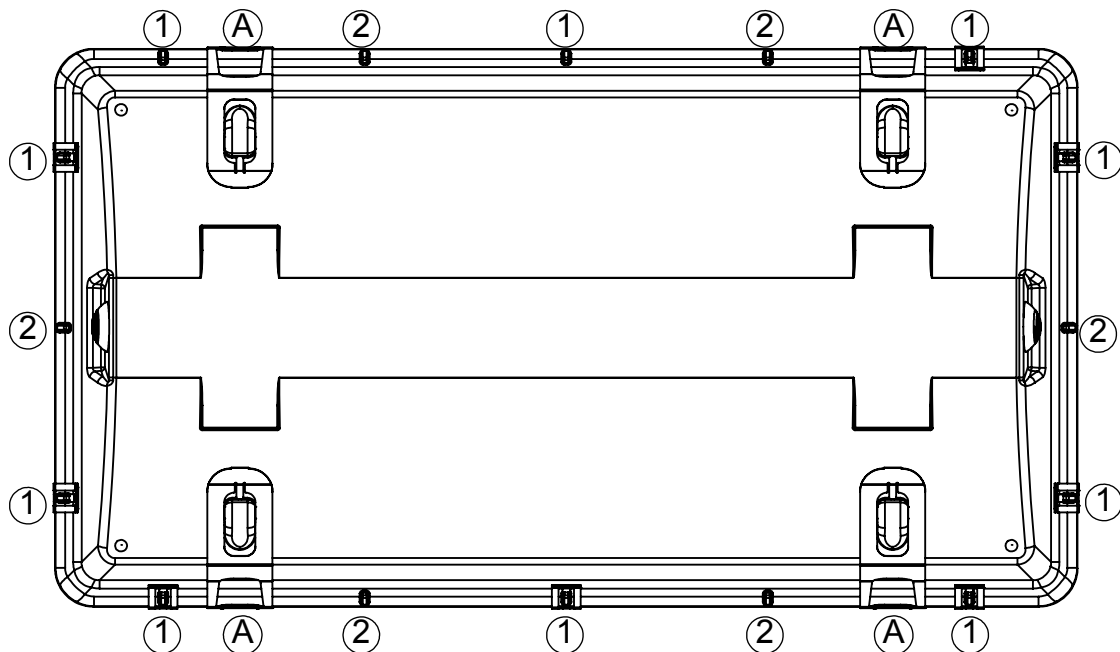
1400 South Old Highway 141
Fenton, MO. 63026

PH (636) 600-4084 FX (636) 600-4108
www.SLPlighting.com

Part Weight	
Material	
Finish	
Drawn By: CSO	DATE: 10/7/2015

CT4s Internal Assembly Notes On CT4s-2XDAR and CT4s-2XDAR-CLIP

SIZE A Scale 1:5 REV. A



1	CT4s-LC	For IP65, IP66, & IP69 Applications
1 & 2	CT4s-LC	For IP67 Applications
2	CT4s-LC	Additional For Alternate Mounting Orientations
A	CT4s-MS-(ZP/SS)	Mounting Straps

UNLESS OTHERWISE SPECIFIED:

DIMENSIONS ARE IN INCHES
TOLERANCES AS NOTED
FRACTIONAL $\pm 1/16"$
ANGULAR $\pm 1^\circ$
TWO PLACE DECIMAL $\pm .060$
THREE PLACE DECIMAL $\pm .030$

INTERPRET GEOMETRIC TOLERANCING PER:

	NAME	DATE
DRAWN		xx/xx/xx
CHECKED	-	xx/xx/xx
ENG APPR.	-	xx/xx/xx
MFG APPR.	-	xx/xx/xx
Q.A.	-	xx/xx/xx
COMMENTS:		
....		

The information contained in this document is the confidential property of Koller Enterprises Inc. This information is to be used by the recipient only for the purpose of which it has been provided by Koller. This document and any information contained therein may not be reproduced or made available to any third party without the written authorization of Koller. No tooling to produce the product which is the subject of this document can be made without written authorization from Koller. Recipient's acceptance of this document is an acknowledgement of agreement to these terms.



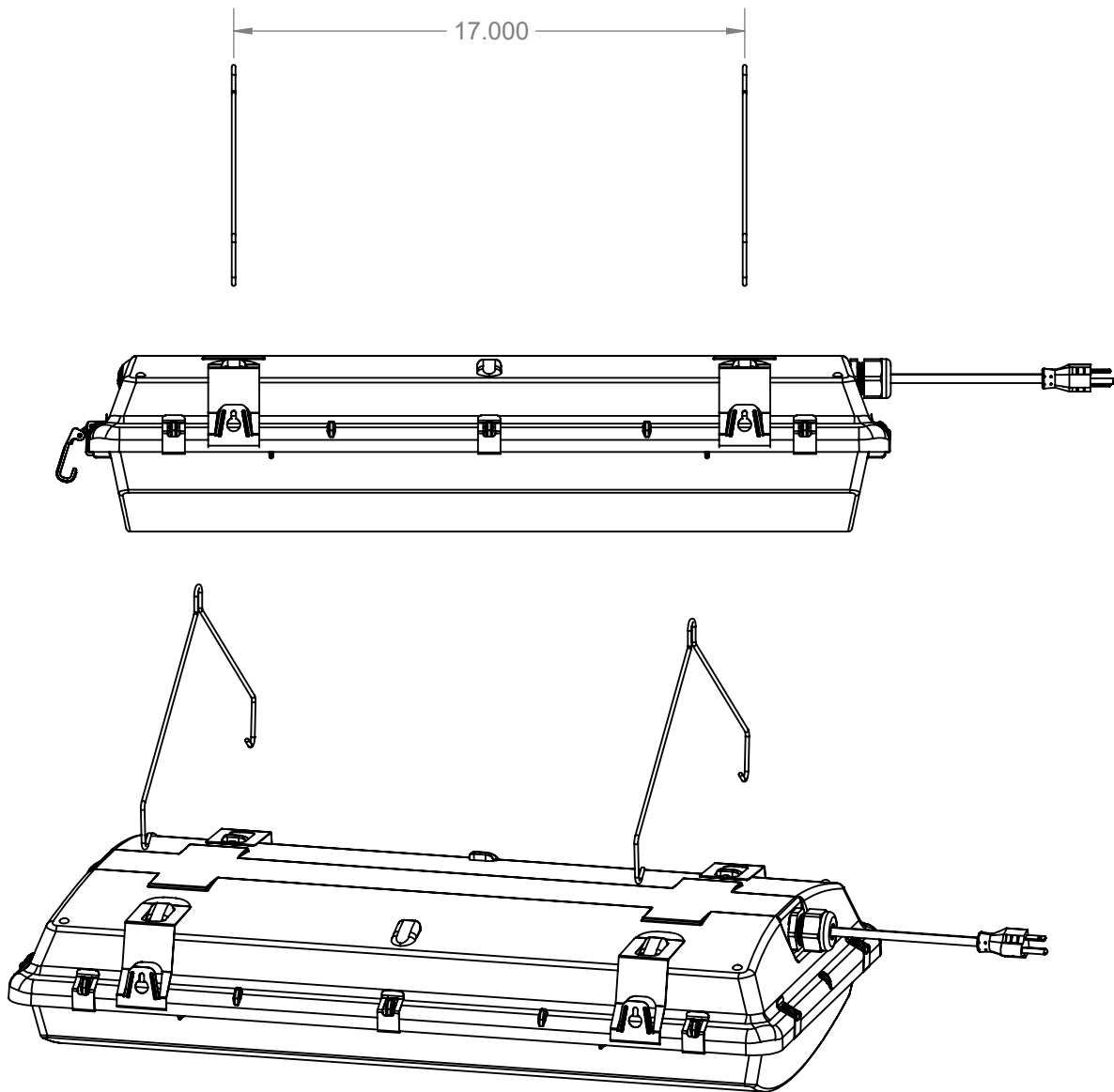
1400 South Old Highway 141
Fenton, MO. 63026

PH (636) 600-4084 FX (636) 600-4108
www.SLPlighting.com

Part Weight	
Material	
Finish	
Drawn By: CSO	DATE: 10/7/2015

CT4s Lens Clip Notes On IP Ratings Installation and Removal

SIZE A	Scale 1:5	REV. A
--------	-----------	--------



1. INSTALL OPTIONAL V HOOKS (SHOWN ABOVE), STEEL CABLES, CHAIN, OR CEILING MOUNT HANGERS TO THE CEILING STRUCTURE ON 36" MOUNTING CENTER.
2. ATTACH V HOOKS TO 4 MOUNTING BRACKETS AT THE SIDE OF CITADEL HOUSING (SHOWN ABOVE).
3. TURN OFF POWER AT THE CIRCUIT BREAKER BEFORE WIRING AND WIRE ACCORDING TO NATIONAL AND LOCAL ELECTRICAL CODES.
4. RESTORE POWER AND ASSURE THE FIXTURE IS WORKING

SAFETY WARNINGS

CAUTION - RISK OF FIRE OR ELECTRICAL SHOCK

THIS PRODUCT MUST BE INSTALLED IN ACCORDANCE WITH THE APPLICABLE INSTALLATION CODE, BY A PERSON FAMILIAR WITH THE CONSTRUCTION AND OPERATION OF THE PRODUCT AND HAZARDS INVOLVED.

MIN 90 °C SUPPLY CONDUCTORS

FIXTURE IS FULLY ASSEMBLED, AND REQUIRES MOUNTING AND WIRING TO BUILDING SUPPLY

WARNING

RISK OF INJURY

- LED LIGHT SOURCE ACHIEVES FULL INTENSITY IMMEDIATELY UPON BEING POWERED ON.
- DO NOT LOOK DIRECTLY AT LED LIGHT SOURCE WHILE ENERGIZED.

INSTALLATION GUIDE

Page 1 of 1