



2005



**HERITAGE. SPEED. DEPENDABILITY.**

[www.liddlesports.com](http://www.liddlesports.com)



# TABLE OF CONTENTS

<b>BASEBALL</b>	<b>007</b>	<b>LACROSSE</b>	<b>050</b>	<b>SIDELINE</b>	<b>89</b>
Jerseys	<b>008</b>	Jerseys & Shorts	<b>051</b>	QT	<b>90</b>
Pants	<b>013</b>			Hoodies	<b>92</b>
Jackets	<b>014</b>	<b>SOCCER</b>	<b>059</b>	Warm-Ups	<b>94</b>
		Jerseys & Shorts	<b>060</b>	Outerwear	<b>96</b>
<b>SOFTBALL</b>	<b>015</b>			Polos & 1/4 Zips	<b>98</b>
Jerseys & Pants	<b>016</b>	<b>TRACK &amp; FIELD</b>	<b>064</b>	Formal Wear	<b>99</b>
Jackets	<b>023</b>	Singlets & Shorts	<b>065</b>	Compression	<b>100</b>
<b>BASKETBALL</b>	<b>024</b>	<b>VOLLEYBALL</b>	<b>068</b>	<b>ACCESSORIES</b>	<b>101</b>
Jerseys & Shorts	<b>025</b>	Jerseys & Shorts	<b>069</b>		
Shooter Shirts	<b>032</b>			<b>BAGS &amp; BACKPACKS</b>	<b>106</b>
		<b>WRESTLING</b>	<b>074</b>		
<b>FOOTBALL</b>	<b>035</b>	Singlets & Shorts	<b>075</b>	<b>HATS</b>	<b>109</b>
Jerseys	<b>036</b>				
Pants	<b>041</b>	<b>RUGBY</b>	<b>077</b>	<b>FONTS &amp; COLORS</b>	<b>112</b>
		Jerseys & Shorts	<b>078</b>		
<b>FLAG FOOTBALL</b>	<b>043</b>			<b>FABRICS</b>	<b>114</b>
		<b>CHEERLEADING</b>	<b>080</b>		
<b>ICE HOCKEY</b>	<b>046</b>	Tops & Bottoms	<b>081</b>	<b>HOW TO ORDER</b>	<b>116</b>
Jerseys, Shells &	<b>047</b>				
Socks		<b>CYCLING</b>	<b>086</b>	<b>MACH 5 LISTINGS</b>	<b>117</b>

## Pricing Throughout Catalog

10 Piece Minimum / 1 Piece Fill-in

15 Business Days Standard Production Time From Approval

## DIGIPERF

Innovative digital laser cut ventilation system, strategically placed on select pro-level styles

## PRO SERIES

The Pro Series product offers the most advanced features designed to elevate both style and performance



**BASEBALL JERSEYS**



**SHOOTER SHIRTS**



**FLAG FOOTBALL**



**SOCCER JERSEYS & SHORTS**



**SIDELINE SHIRTS & SHORTS**

# ESSENTIALS. FAST. ON-TIME..

**CREW & V-NECK • SLEEVELESS, SHORT & LONG SLEEVE • 3 FABRIC OPTIONS  
MEN'S, WOMEN'S & YOUTH • SHORTS W/ & W/O POCKETS**



SHIPS 10 DAYS FROM APPROVAL



BUILD ONLINE



ADD YOUR TEAM COLORS AND LOGO

- Full dye out & sew sublimation
- 10 piece minimum per style
- 100 piece maximum\*\*
- Templated designs only
- Freight included
- No charge for names/numbers

**\*\*Delivery time will be quoted at approval for orders over 100 pcs**

10-15 business days standard production time from artwork approval plus shipping time !!!

**Free freight, no setup charges, no artwork fee**



# MORE THAN JUST THE BASICS. UNIFORMS IN 10 DAYS.



Lacrosse  
Shooter Shirt

Page 56

Basketball  
Jersey

Page 29

Track & Field  
Singlet

Page 67



**LOOK FOR THIS ICON TO FIND ALL PRODUCTS AVAILABLE**

Visit page 114 for more information on Fabrics /// Visit page 112 for information on fonts and colors

# WHAT TO LOOK FOR

## NEW

### NEW ITEMS

Our latest Catalog is packed with exciting new additions! **Be sure to look for the "NEW" icon next to each product**—some are brand-new designs, while others feature updated cuts, fresh fabric options, or improved details.

Whether it's a completely new style or a refreshed version of a favorite, there's something new to discover on nearly every page.



**QUICK TIME**  
Items shipped 10 days  
after order submittal /  
approval



**HYBRID**  
Select items that combine  
sublimation with twill and/or  
pre-dyed fabric



**REVERSIBLE**  
Fully reversible items in  
either 2-ply or 1-ply fabric  
options



**FAST TURN**  
Items shipped 10 days  
after order submittal /  
approval

## PRO

**Pro tier is our pinnacle uniform and apparel offering for players wanting the highest level features and performance.**

This tier of product provides the most advanced features including upgraded stretch woven fabrics for style and durability, Digiperf laser venting for enhanced breathability, hidden snap buttons, enhanced sewing and finishing techniques and much more. For the individual or team that prefers the very best performance rather than "shoe brand" marketing.

## SELECT

**Select tier is our premium product offering that includes enhanced fabrics and performance features at competitive prices.**

This tier of product offers advanced features such as 4-way stretch fabrics for enhanced comfort and range of motion, stretch mesh for maximum breathability, color matched findings and multi-fabric options for targeted performance gains. For the individual or team that wants quantifiable performance gains over traditional "trade brand" offerings.

## CORE

**Core tier is our entry level product that still offers premium performance and features at a more affordable price point.**

Traditional and time-proven fabrics are chosen for task and sport specific demands and offer excellent durability and comfort. Moisture wicking and anti-microbial fabrics, reinforced sewing techniques and modern and stylish designs are hallmarks of our Core tier. For the individual or team that wants a performance driven and modern solution at an industry leading price value proposition.



*Asheville*

# BASEBALL





# PRO SERIES

## HOME RUN S/S SNAP FULL BUTTON JERSEY

PRO SELECT CORE

BA-MSS82-PRO

\$65.00

### DESCRIPTION

- Elite/Pro level jersey
- Digiperf laser ventilation
- Hidden snap full button profile
- Scoop hemmed bottom
- Woven fabric for style/durability
- Excellent range of motion
- Excellent pick resistance

### SIZING:

Men's: S-5XL  
Youth: YXS-YXL

### FABRICS:

Flexweave 1.4



LASER CUT VENTILATION



PREMIUM WOVEN



4-WAY STRETCH



Hidden Snap Buttons

□ FLEXWEAVE 1.4    ■ DIGIPERF

10-15 business days standard production time from artwork approval plus shipping time ///

Free freight, no setup charges, no artwork fee





# TRIPLE PLAY S/S FULL BUTTON JERSEY

PRO **SELECT** CORE

SELECT - BA-MSS02-SEL **\$60.00**

**CORE - BA-MSS02-COR** \$55.00

## DESCRIPTION

- Select or Core level short sleeve jersey
- Traditional full button profile
- Scoop hemmed bottom
- Excellent durability and range of motion
- Excellent breathability

## SIZING:

Men's: S-5XL  
Youth: YXS-YXL

## FABRICS:

Flex Aerofiber (Select)  
Dynapin (Core) **NEW**



# HOME RUN S/L SNAP FULL BUTTON JERSEY

PRO **SELECT** CORE

BA-MSL89-PRO **\$63.00**

## DESCRIPTION

- Elite/Pro level sleeveless jersey
- Digiperf laser ventilation
- Hidden snap full button profile
- Scoop hemmed bottom
- Flexweave 1.4 woven fabric for style/durability
- Excellent range of motion & pick resistance

## SIZING:

Men's: S-5XL  
Youth: YXS-YXL

## FABRICS:

Flexweave 1.4



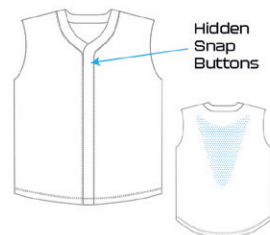
LASER CUT VENTILATION



PREMIUM WOVEN



4-WAY STRETCH



Hidden Snap Buttons

□ FLEXWEAVE 1.4 ■ DIGIPERF

\*Green highlights indicate "Most Popular" fabrics

Visit page 114 for more information on Fabrics /// Visit page 112 for information on fonts and colors



# TRIPLE PLAY

## S/L FULL BUTTON JERSEY

PRO **SELECT** CORE

SELECT - BA-MSLO9-SEL **\$50.00**  
 CORE - BA-MSLO9-COR **\$45.00**

### DESCRIPTION

- Select or Core level sleeveless jersey
- Traditional full button profile
- Scoop hemmed bottom
- Excellent durability and range of motion
- Excellent breathability

### SIZING:

Men's: S-5XL  
 Youth: YXS-YXL

### FABRICS:

Flex Aerofiber (Select)  
 Dynapin (Core) **NEW**



# HOME RUN

## S/S SNAP 2-BUTTON JERSEY

PRO **SELECT** CORE

BA-MSS81-PRO **\$64.00**

### DESCRIPTION

- Elite/Pro level short sleeve jersey
- Digiperf laser ventilation
- Hidden snap 2-button profile
- Scoop hemmed bottom
- Flexweave 1.4 woven fabric for style/durability
- Excellent range of motion & pick resistance

### SIZING:

Men's: S-5XL  
 Youth: YXS-YXL

### FABRICS:

Flexweave 1.4



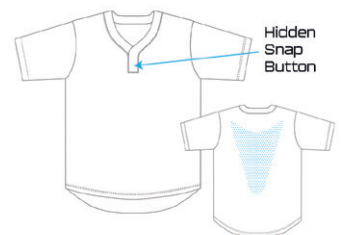
LASER CUT VENTILATION



PREMIUM WOVEN



4-WAY STRETCH



Hidden Snap Button

□ FLEXWEAVE 1.4 ■ DIGIPERF



## TRIPLE PLAY S/S 2-BUTTON JERSEY

PRO **SELECT** CORE

SELECT - BA-MSS08-SEL **\$55.00**  
**CORE - BA-MSS08-COR** **\$50.00**

### DESCRIPTION

- Select or Core level short sleeve jersey
- Traditional 2- button profile
- Scoop hemmed bottom
- Excellent durability and range of motion
- Excellent breathability

### SIZING:

Men's: S-5XL  
 Youth: YXS-YXL

### FABRICS:

Flex Aerofiber (Select)  
 Dynapin (Core) **NEW**



## TRIPLE PLAY S/L 2-BUTTON JERSEY

PRO **SELECT** CORE

SELECT - BA-MSL08-SEL **\$50.00**  
**CORE - BA-MSL08-COR** **\$45.00**

### DESCRIPTION

- Select or Core level short sleeve jersey
- Traditional 2- button profile
- Scoop hemmed bottom
- Excellent durability and range of motion
- Excellent breathability

### SIZING:

Men's: S-5XL  
 Youth: YXS-YXL

### FABRICS:

Flex Aerofiber (Select)  
 Dynapin (Core) **NEW**

\*Green highlights indicate "Most Popular" fabrics

Visit page 114 for more information on Fabrics /// Visit page 112 for information on fonts and colors



## QTVN S/S V-NECK JERSEY

**PRO** **SELECT** **CORE**

CORE - SF-MSS51-DYN	\$30.00
<b>SELECT - SF-MSS51-PIN</b>	\$35.00
SELECT+ - SF-MSS51-ULT	\$40.00

### DESCRIPTION

- Set-in sleeves
- Drop tail design
- Neck taping
- Self material collar

### SIZING:

Men's: S-5XL  
Youth: XS-XL

### FABRICS:

Dynalite (Core)  
Dynapin (Select)  
Ultraflex (Select+)



## QTCN S/S CREW NECK JERSEY

**PRO** **SELECT** **CORE**

CORE - SF-MSS50-DYN	\$30.00
<b>SELECT - SF-MSS50-PIN</b>	\$35.00
SELECT+ - SF-MSS50-ULT	\$40.00

### DESCRIPTION

- Set-in sleeves
- Drop tail design
- Neck taping
- Self material collar

### SIZING:

Men's: S-5XL  
Youth: XS-XL

### FABRICS:

Dynalite (Core)  
Dynapin (Select)  
Ultraflex (Select+)

10-15 business days standard production time from artwork approval plus shipping time ///

Free freight, no setup charges, no artwork fee



NEW

# PRO PREFERRED BASEBALL PANTS/KNICKERS

PRO **SELECT** CORE

PANT - BA-MPT02-SEL

\$60.00

KNICKER - BA-MPT01-SEL

\$55.00

## DESCRIPTION

- Select level baseball pant & knicker
- Heavyweight Durafiber fabric
- Reinforced knees
- Silicone Anti-Slip waistband

## SIZING:

Men's: S-3XL

Youth: YXS-YXL

## FABRICS:

Durafiber

Full Length



Knicker Length



\*Green highlights indicate "Most Popular" fabrics

Visit page 114 for more information on Fabrics /// Visit page 112 for information on fonts and colors



NEW

# LEGEND WOVEN CAGE JACKET

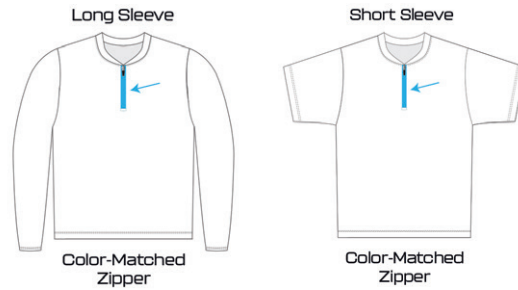
PRO SELECT CORE

L/S - BA-MLS07-SEL	\$60.00
S/S - BA-MSS07-SEL	\$55.00
L/S Hooded - BA-MLS10-SEL	\$65.00
S/S Hooded - BA-MSS10-SEL	\$60.00

### DESCRIPTION

- Elite/Pro level cage jacket
- 1/4 Zip design
- Flex woven fabric for full range of motion
- Excellent pick resistance
- 4-inch slits on sides of body
- Offered with or without hood

**SIZING:** Men's: S-3XL Youth: YS-YXL  
**FABRICS:** Flexweave 1.9



10-15 business days standard production time from artwork approval plus shipping time ///

Free freight, no setup charges, no artwork fee



# SOFTBALL

BELLE VUE

37



# PRO SERIES

## GRAND SLAM S/S SNAP FAUX BUTTON JERSEY

PRO SELECT CORE

SB-WSS88-PRO

\$65.00

### DESCRIPTION

- Elite/Pro level short sleeve jersey
- Digiperf laser ventilation
- 1 hidden snap button at top with faux front closure
- Flexweave 1.4 woven fabric for style/durability
- Excellent range of motion & pick resistance

### SIZING:

Women's: S-3XL  
Girls: GXS-GXL

### FABRICS:

Flexweave 1.4



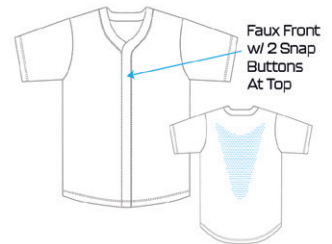
LASER CUT VENTILATION



PREMIUM WOVEN



4-WAY STRETCH



FLEXWEAVE 1.4 DIGIPERF



10-15 business days standard production time from artwork approval plus shipping time ///

Free freight, no setup charges, no artwork fee



# RISEBALL

## S/S FAUX BUTTON JERSEY

PRO **SELECT** CORE

SELECT - SB-WSS08-SEL **\$60.00**

**CORE - SB-WSS08-COR** **\$55.00**

### DESCRIPTION

- Select & Core level premium jersey
- 2 buttons at top with faux front closure
- 4-way stretch fabric
- Excellent durability and range of motion
- Excellent breathability

### SIZING:

Women's: S-3XL  
Girls: GXS-GXL

### FABRICS:

Flex Aerofiber (Select)  
Dynapin (Core) **NEW**

**NEW**

# GRAND SLAM

## S/L SNAP FAUX BUTTON JERSEY

PRO **SELECT** CORE

SB-WSL88-PRO **\$63.00**

### DESCRIPTION

- Elite/Pro level sleeveless jersey
- Digiperf laser ventilation
- 1 hidden snap button at top with faux front closure
- Flexweave 1.4 woven fabric for style/durability
- Excellent range of motion & pick resistance

### SIZING:

Women's: XS-3XL

### FABRICS:

Flexweave 1.4



LASER CUT  
VENTILATION



PREMIUM  
WOVEN



4-WAY  
STRETCH



Faux Front  
w/ 2 Snap  
Buttons  
At Top

□ FLEXWEAVE 1.4 ■ DIGIPERF

\*Green highlights indicate "Most Popular" fabrics

Visit page 114 for more information on Fabrics /// Visit page 112 for information on fonts and colors



## RISEBALL S/L FAUX BUTTON JERSEY

PRO **SELECT** CORE

SELECT - SB-WSLO8-SEL **\$50.00**

CORE - SB-WSLO8-COR **\$45.00**

### DESCRIPTION

- Select or Core level sleeveless jersey
- 2 buttons at top with faux front closure
- Excellent durability and range of motion
- Excellent breathability

### SIZING:

Women's: XS-3XL

### FABRICS:

Flex Aerofiber (Select)

Dynapin (Core) **NEW**



## GRAND SLAM S/S SNAP 1-BUTTON JERSEY

PRO **SELECT** CORE

SB-WSS89-PRO **\$63.00**

### DESCRIPTION

- Elite/Pro level short sleeve jersey
- Digiperf laser ventilation
- Hidden snap 1-button profile
- Flexweave 1.4 woven fabric for durability
- Excellent range of motion
- Excellent pick resistance

### SIZING:

Women's: S-3XL

Girl's: GXS-GXL

### FABRICS:

Flexweave 1.4



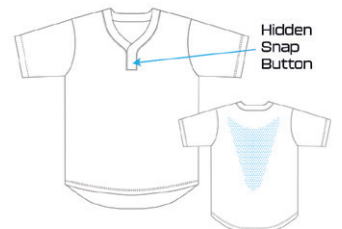
LASER CUT  
VENTILATION



PREMIUM  
WOVEN



4-WAY  
STRETCH



Hidden  
Snap  
Button

□ FLEXWEAVE 1.4    ■ DIGIPERF

10-15 business days standard production time from artwork approval plus shipping time ///

Free freight, no setup charges, no artwork fee



# RISEBALL

## S/S 1-BUTTON JERSEY

PRO **SELECT** CORE

SELECT - SB-WSS09-SEL **\$55.00**  
 CORE - SB-WSS09-COR **\$50.00**

### DESCRIPTION

- Select or Core level short sleeve jersey
- Traditional 1-button profile
- Excellent durability and range of motion
- Excellent breathability

### SIZING:

Women's: S-3XL  
 Girl's: GXS-GXL

### FABRICS:

Flex Aerofiber (Select)  
 Dynapin (Core) **NEW**



# GRAND SLAM

## S/L SNAP 1-BUTTON JERSEY

PRO **SELECT** CORE

SB-WSL89-PRO **\$60.00**

### DESCRIPTION

- Elite/Pro level sleeveless jersey
- Digiperf laser ventilation
- Hidden snap 1-button profile
- Flexweave 1.4 woven fabric for style/durability
- Excellent range of motion & pick resistance

### SIZING:

Women's: XS-3XL

### FABRICS:

Flexweave 1.4



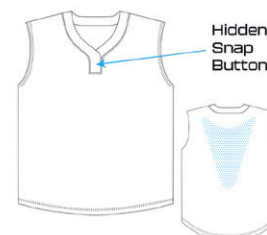
LASER CUT VENTILATION



PREMIUM WOVEN



4-WAY STRETCH



□ FLEXWEAVE 1.4    ■ DIGIPERF

**\*Green highlights indicate "Most Popular" fabrics**

Visit page 114 for more information on Fabrics /// Visit page 112 for information on fonts and colors



## RISEBALL S/L 1-BUTTON JERSEY

PRO **SELECT** CORE

SELECT - SB-WSLO9-SEL **\$50.00**

**CORE - SB-WSLO9-COR** **\$45.00**

### DESCRIPTION

- Select or Core level sleeveless jersey
- Traditional 1-button profile
- Excellent durability and range of motion
- Excellent breathability

### SIZING:

Women's: XS-3XL

### FABRICS:

Flex Aerofiber (Select)

Dynapin (Core) **NEW**



## QTVN S/S V-NECK JERSEY

PRO **SELECT** CORE

CORE - SF-WSS51-DYN **\$30.00**

**SELECT - SF-WSS51-PIN** **\$35.00**

SELECT+ - SF-WSS51-ULT **\$40.00**

### DESCRIPTION

- Short sleeve v-neck design
- Set-in sleeves
- Drop tail design
- Neck taping
- Self material collar

### SIZING:

Women's: S-3XL

Youth: XS-XL

### FABRICS:

Dynalite (Core)

Dynapin (Select)

Ultraflex (Select+)

10-15 business days standard production time from artwork approval plus shipping time ///

Free freight, no setup charges, no artwork fee



NEW

## QTVN QT S/L RACERBACK JERSEY

PRO **SELECT** CORE

CORE - SF-WSL53-DYN	\$30.00
<b>SELECT - SF-WSL53-PIN</b>	\$35.00
SELECT+ - SF-WSL53-ULT	\$40.00

### DESCRIPTION

- Sleeveless racerback v-neck design
- Neck taping
- Self material collar

### SIZING:

Women's: S-3XL

Youth: XS-XL

### FABRICS:

Dynalite (Core)

Dynapin (Select)

Ultraflex (Select+)



Racerback  
Cut



## QTCN QT S/S CREW NECK JERSEY

PRO **SELECT** CORE

CORE - SF-WSS50-DYN	\$30.00
<b>SELECT - SF-WSS50-PIN</b>	\$35.00
SELECT+ - SF-WSS50-ULT	\$40.00

### DESCRIPTION

- Short sleeve crew neck design
- Set-in sleeves
- Drop tail design
- Neck taping
- Self material collar

### SIZING:

Women's: S-3XL

Youth: XS-XL

### FABRICS:

Dynalite (Core)

Dynapin (Select)

Ultraflex (Select+)

\*Green highlights indicate "Most Popular" fabrics

Visit page 114 for more information on Fabrics /// Visit page 112 for information on fonts and colors



## QTCN

### S/L CREW NECK JERSEY

PRO **SELECT** CORE

CORE - SF-WSL50-DYN	\$30.00
<b>SELECT - SF-WSL50-PIN</b>	\$35.00
SELECT+ - SF-WSL50-ULT	\$40.00

#### DESCRIPTION

- Sleeveless crew neck design
- Set-in sleeves
- Drop tail design
- Neck taping
- Self material collar

#### SIZING:

Women's: S-3XL  
Youth: XS-XL

#### FABRICS:

Dynalite (Core)  
Dynapin (Select)  
Ultraflex (Select+)



NEW

## ELITE PREFERRED KNICKER

PRO **SELECT** CORE

DRAWSTRING - SB-WPT01-SEL	\$55.00
W/ BELT - SB-WPT02-SEL	\$60.00

#### DESCRIPTION

- Select level premium knicker pant w/ or w/o belt
- Heavyweight fabric for enhanced durability
- Silicone Anti-Slip waistband
- 2 back pockets

#### SIZING:

Women's: XS-3XL  
Girls: GXS-GXL

#### FABRICS:

Durafiber

Knicker Length



10-15 business days standard production time from artwork approval plus shipping time ///

Free freight, no setup charges, no artwork fee

NEW

# LEGEND CAGE JACKET

PRO SELECT CORE

L/S - SB-WLS07-SEL	\$60.00
S/S - SB-WSS07-SEL	\$55.00
L/S Hooded - SB-WLS10-SEL	\$65.00
S/S Hooded - SB-WSS10-SEL	\$60.00

## DESCRIPTION

- Elite/Pro level cage jacket
- 1/4 Zip design
- Flex woven fabric for full range of motion
- Excellent pick resistance
- 4-inch slits on sides of body

## SIZING:

Women's: XS-2XL

## FABRICS:

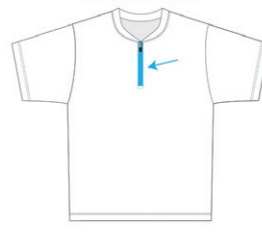
Flexweave 1.9

Long Sleeve



Color-Matched  
Zipper

Short Sleeve



Color-Matched  
Zipper



\*Green highlights indicate "Most Popular" fabrics

Visit page 114 for more information on Fabrics /// Visit page 112 for information on fonts and colors



# BASKETBALL





# PRO SERIES

## GOAT JERSEY

PRO SELECT CORE

MEN'S - BB-MSL81-PRO  
WOMEN'S - BB-WSL81-PRO

\$55.00

### DESCRIPTION

- Elite/Pro level jersey
- Digiperf laser ventilation
- Multi-panel construction with modern collar
- Flexweave 1.4 woven front for style & durability
- Flex Aerofiber mesh back for breathability
- Ribbed arm openings for enhanced comfort

### SIZING:

Men's: S-5XL  
Youth: YS-YXL  
Women's: XS-3XL

### FABRICS:

Flexweave 1.4  
Flex Aerofiber  
Rib



LASER CUT VENTILATION



PREMIUM WOVEN



4-WAY STRETCH



□ FLEXWEAVE 1.4    ■ DIGIPERF  
■ FLEX AEROFIBER

\*Green highlights indicate "Most Popular" fabrics

Visit page 114 for more information on Fabrics /// Visit page 112 for information on fonts and colors





# TRIPLE DOUBLE JERSEY

PRO SELECT CORE

MEN'S - BB-MSL82-PRO  
WOMEN'S - BB-WSL82-PRO

\$55.00

### DESCRIPTION

- Elite/Pro level jersey
- Digiperf laser ventilation
- Multi-panel construction with v-neck collar
- Flexweave 1.4 woven front for style & durability
- Flex Aerofiber mesh back for breathability
- Ribbed arm openings for enhanced comfort

**SIZING:** Men's: S-5XL  
Youth: YS-YXL  
Women's: XS-3XL

**FABRICS:** Flexweave 1.4  
Flex Aerofiber  
Rib



LASER CUT VENTILATION



PREMIUM WOVEN



4-WAY STRETCH



□ FLEXWEAVE 1.4    ■ DIGIPERF  
■ FLEX AEROFIBER

# GOAT SHORT

PRO SELECT CORE

MEN'S 5" - BB-MSH81-PRO5  
MEN'S 7" - BB-MSH81-PRO7  
MEN'S 9" - BB-MSH81-PRO9  
WOMEN'S 5" - BB-WSH81-PRO5  
WOMEN'S 7" - BB-WSH81-PRO7

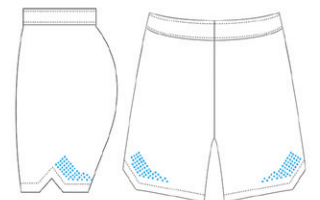
\$45.00

### DESCRIPTION

- Elite/Pro level shorts
- Digiperf laser ventilation
- Men's Inseam 5", 7" or 9" & Women's Inseam 5" or 7"
- Flexweave 1.4 woven for style/durability
- Dynamic jacquard waistband w/ lace drawstring
- Waistband plate for additional customization

**SIZING:** Men's: S-5XL  
Youth: YS-YXL  
Women's: XS-3XL

**FABRICS:** Flexweave 1.4



□ FLEXWEAVE 1.4    ■ DIGIPERF



10-15 business days standard production time from artwork approval plus shipping time ///

Free freight, no setup charges, no artwork fee



NEW

## FULL PRESS V-NECK JERSEY

PRO **SELECT** CORE

MEN'S - BB-MSLO2-SEL  
WOMEN'S - BB-WSLO2-SEL

**\$45.00**

### DESCRIPTION

- Select jersey with traditional v-neck collar
- Dynapin fabric for excellent breathability
- Ribbed collar and arm openings
- Excellent durability and range of motion

**SIZING:** Men's: S-5XL  
Youth: YS-YXL  
Women's: XS-3XL

**FABRICS:** Dynapin  
Rib



NEW

## FULL PRESS CREW NECK JERSEY

PRO **SELECT** CORE

MEN'S - BB-MSLO1-SEL  
WOMEN'S - BB-WSLO1-SEL

**\$45.00**

### DESCRIPTION

- Select jersey with traditional crew neck collar
- Dynapin fabric for excellent breathability
- Ribbed collar and arm openings
- Excellent durability and range of motion

**SIZING:** Men's: S-5XL  
Youth: YS-YXL  
Women's: XS-3XL

**FABRICS:** Dynapin  
Rib



NEW

# FULL PRESS SHORTS

PRO **SELECT** CORE

MEN'S 5" INSEAM - BB-MSHO1-SEL5  
 MEN'S 7" INSEAM - BB-MSHO1-SEL7  
 MEN'S 9" INSEAM - BB-MSHO1-SEL9  
 WOMEN'S 5" INSEAM - BB-WSHO1-SEL5  
 WOMEN'S 7" INSEAM - BB-WSHO1-SEL7

**\$40.00**

## DESCRIPTION

- Select level premium shorts
- Men's Inseam 5", 7" or 9" & Women's Inseam 5" or 7"
- Dynamic jacquard waistband w/ lace drawstring
- Waistband plate for additional customization

**SIZING:**                      **FABRICS:** Dynapin

Men's: S-5XL  
 Youth: YS-YXL  
 Women's: XS-3XL



# STEAL **QT** CREW NECK JERSEY

PRO **SELECT** CORE

MEN'S - BB-MSL11-COR  
 WOMEN'S - BB-WSL11-COR

**\$40.00**

## DESCRIPTION

- Core jersey with 2 panel construction
- Lightweight interlock for style/ comfort/performance
- Overlock stitching with double stitched hems
- Sublimated ribbed collar and armholes

**SIZING:**                      **FABRICS:** Dyalite / Rib

Men's: S-5XL  
 Youth: YXS-YXL  
 Women's: XS-3XL

10-15 business days standard production time from artwork approval plus shipping time ///

**Free freight, no setup charges, no artwork fee**



# FREE THROW QT V-NECK JERSEY

PRO SELECT **CORE**

MEN'S - BB-MSL12-COR  
WOMEN'S - BB-WSL12-COR

**\$40.00**

### DESCRIPTION

- Core jersey with 2 panel construction
- Lightweight interlock for style/comfort/performance
- Overlock stitching with double stitched hems
- Sublimated ribbed collar and armholes

**SIZING:**                      **FABRICS:** Dynalite / Rib

Men's: S-5XL  
Youth: YXS-YXL  
Women's: XS-3XL



# QT QT SHORT

PRO SELECT **CORE**

5" MEN'S (Dynalite) - SF-MSH55-DYN5  
7" MEN'S (Dynalite) - SF-MSH53-DYN7  
9" MEN'S (Dynalite) - SF-MSH51-DYN9  
3" WOMEN'S (Dynalite) - SF-WSH55-DYN3  
5" WOMEN'S (Dynalite) - SF-WSH53-DYN5  
7" WOMEN'S (Dynalite) - SF-WSH51-DYN7

**\$35.00**

**NEW**

### DESCRIPTION

- Core level basketball short
- Inner lace drawcord
- Cover hemmed leg openings
- 5", 7", 9" (Men's) and 3", 5", 7" (Women's) inseams

**SIZING:**                      **FABRICS:**

Men's: S-5XL                      Dynalite  
Youth: XS-XL  
Women's: S-3XL



FABRIC  
DETAIL



FELL SEAM  
STITCHING

NEW

## 3-POINT SINGLE PLY REVERSIBLE JERSEY

PRO **SELECT** CORE

MEN'S - BB-MSLO7-SEL  
WOMEN'S - BB-WSLO7-SEL

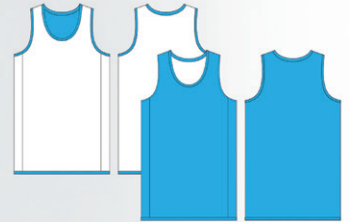
\$45.00

### DESCRIPTION

- Select level reversible jersey
- Single ply for lightweight and breathability
- Cover hemmed armholes and neck
- Felt seam stitching

### SIZING:

Men's: S-5XL  
Youth: YXS-YXL  
Women's: XS-3XL



### FABRICS:

Dualwick

SIDE A  SIDE B

NEW

## 3-POINT SINGLE PLY REVERSIBLE SHORTS

PRO **SELECT** CORE

MEN'S 5" - BB-MSHO7-SEL5  
MEN'S 7" - BB-MSHO7-SEL7  
MEN'S 9" - BB-MSHO7-SEL9  
WOMEN'S 5" - BB-WSHO7-SEL5  
WOMEN'S 7" - BB-WSHO7-SEL7

\$45.00

### DESCRIPTION

- Select level reversible short
- Men's 5", 7" or 9" & Women's 5" or 7" inseam
- Inner lace drawstring
- Felt seam stitching

### SIZING:

Men's: S-5XL  
Youth: YS-YXL  
Women's: XS-3XL



### FABRICS:

Dualwick

SIDE A  SIDE B



## DOUBLE TAKE REVERSIBLE JERSEY



PRO SELECT **CORE**

MEN'S - BB-MSLO5-COR  
WOMEN'S - BB-WSLO5-COR

**\$40.00**

### DESCRIPTION

- Core level reversible jersey
- No grain through - any design/color on both sides with no ghosting
- Lightweight interlock for style/comfort/performance
- Overlook stitching

### SIZING:

Men's: S-5XL  
Youth: YXS-YXL  
Women's: XS-3XL

### FABRICS:

Dynalite

## DOUBLE TAKE REVERSIBLE SHORTS



PRO SELECT **CORE**

MEN'S 5" - BB-MSHO5-COR5  
MEN'S 7" - BB-MSHO5-COR7  
MEN'S 9" - BB-MSHO5-COR9  
WOMEN'S 5" - BB-WSHO5-COR5  
WOMEN'S 7" - BB-WSHO5-COR7

**\$40.00**

### DESCRIPTION

- Core level reversible short
- No grain through - any design/color on both sides with no ghosting
- Men's 5", 7" or 9" & Women's 5" or 7" inseam
- Inner lace drawstring
- Overlook stitching

### SIZING:

Men's: S-5XL  
Youth: YS-YXL  
Women's: XS-3XL

### FABRICS:

Dynalite



# QTCN

## S/S CREW NECK T-SHIRT (GREAT FOR SHOOTER SHIRTS)

PRO **SELECT** CORE

DYNALITE - SF-MSS50-DYN

**\$30.00**

**+\$5.00 For Dynapin / +\$10.00 for Ultraflex**

\*\*For full list of SKUs see page 117

**DESCRIPTION**

- Set-in sleeves
- Drop tail design
- Neck taping
- Self material collar

**SIZING:**

- Men's: S-5XL
- Women's: S-3XL
- Youth: XS-XL

**FABRICS:**

- Dynalite (Core)
- Dynapin (Select)
- Ultraflex (Select+)



# QTCN

## L/S CREW NECK T-SHIRT (GREAT FOR SHOOTER SHIRTS)

PRO **SELECT** CORE

DYNALITE - SF-MLS50-DYN

**\$32.00**

**+\$5.00 For Dynapin / +\$10.00 for Ultraflex**

\*\*For full list of SKUs see page 117

**DESCRIPTION**

- Set-in sleeves
- Drop tail design
- Neck taping
- Self material collar

**SIZING:**

- Men's: S-5XL
- Women's: S-3XL
- Youth: XS-XL

**FABRICS:**

- Dynalite (Core)
- Dynapin (Select)
- Ultraflex (Select+)



# QTHOOD

## S/L HOODED T-SHIRT (GREAT FOR SHOOTER SHIRTS)

PRO **SELECT** CORE

DYNALITE - SF-MSL52-DYN

**\$35.00**

**+\$5.00 For Dynapin / +\$10.00 for Ultraflex**

\*\*For full list of SKUs see page 117

**DESCRIPTION**

- Drop tail design
- Neck taping
- Single layer hood

**SIZING:**

- Men's: S-5XL
- Women's: S-3XL
- Youth: XS-XL

**FABRICS:**

- Dynalite (Core)
- Dynapin (Select)
- Ultraflex (Select+)

10-15 business days standard production time from artwork approval plus shipping time ///

Free freight, no setup charges, no artwork fee



# QTHOOD

## S/S HOODED T-SHIRT (GREAT FOR SHOOTER SHIRTS)

PRO **SELECT** CORE

DYNALITE - SF-MSS52-DYN **\$37.00**

**+\$5.00 For Dynapin / +\$10.00 for Ultraflex**

\*\*For full list of SKUs see page 117

**DESCRIPTION**

- Set-in sleeves
- Drop tail design
- Neck taping
- Single layer hood

**SIZING:**

Men's: S-5XL  
 Women's: S-3XL  
 Youth: XS-XL

**FABRICS:**

Dynalite (Core)  
 Dynapin (Select)  
 Ultraflex (Select+)



# QTHOOD

## L/S HOODED T-SHIRT (GREAT FOR SHOOTER SHIRTS)

PRO **SELECT** CORE

DYNALITE - SF-MLS52-DYN **\$40.00**

**+\$5.00 For Dynapin / +\$10.00 for Ultraflex**

\*\*For full list of SKUs see page 117

**DESCRIPTION**

- Set-in sleeves
- Drop tail design
- Neck taping
- Single layer hood

**SIZING:**

Men's: S-5XL  
 Women's: S-3XL  
 Youth: XS-XL

**FABRICS:**

Dynalite (Core)  
 Dynapin (Select)  
 Ultraflex (Select+)

**\*Green highlights indicate "Most Popular" fabrics**



# BREAK AWAY PANTS

PRO SELECT **CORE**

BB-MPT01-COR

\$60.00

## DESCRIPTION

- Traditional Core level Tear Away pant
- Dyna Dry fabric body
- Dazzle reinforcing side strip insert
- Full snap release sides
- Reinforced stitching throughout

## SIZING:

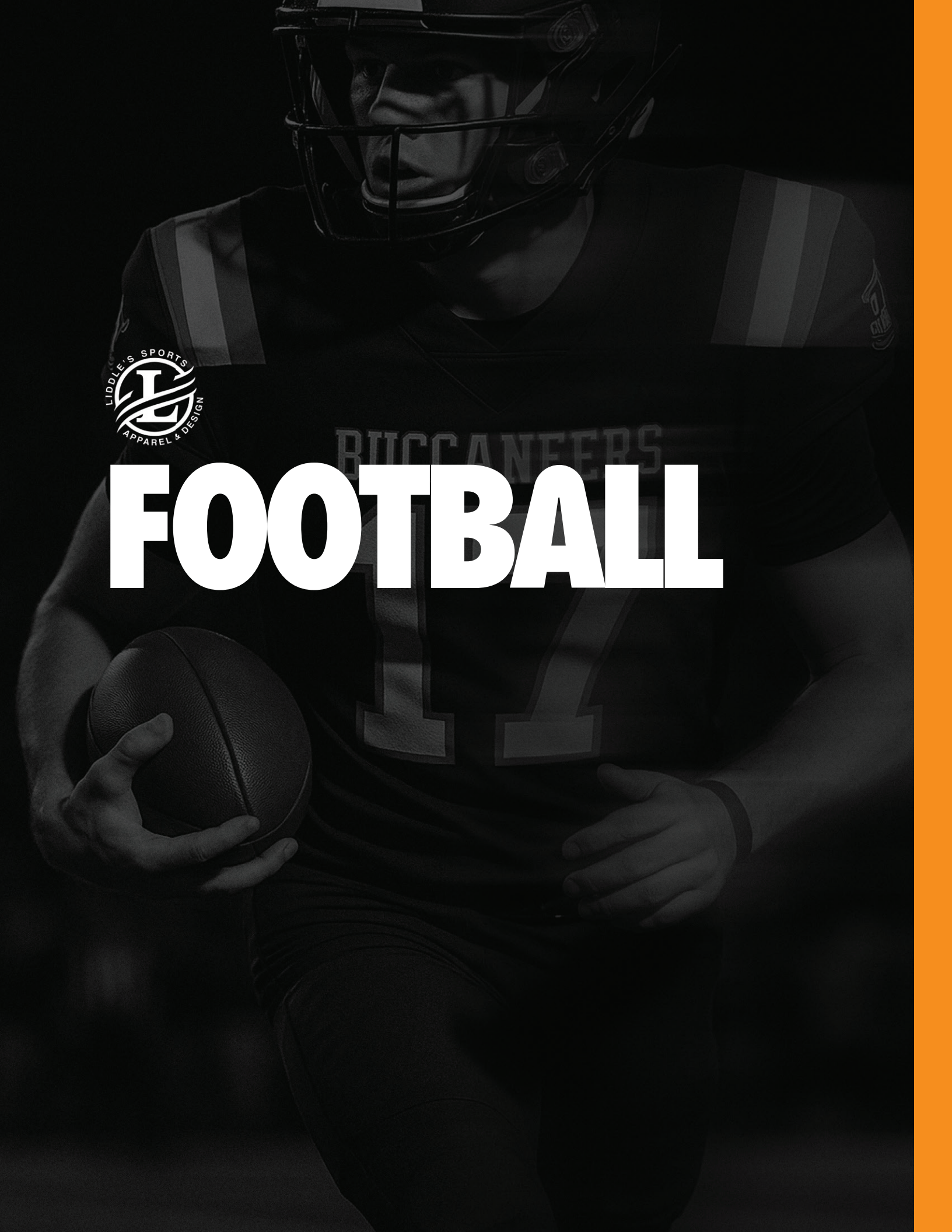
Men's: S-4XL  
Youth: YS-YL

## FABRICS:

Dyna Dry  
Dazzle



# FOOTBALL





# PRO SERIES

NEW

## TOUCHDOWN PRO H TWILL JERSEY

PRO SELECT CORE

FB-MSS82-PRO

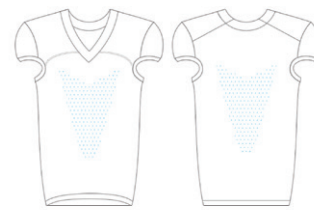
\$85.00

### DESCRIPTION

- Pro/Elite level jersey with tapered fit
- All-over sublimated jersey
- Custom sublimated twill numbers\* front & back & home plate
- Embroidered front team name\* (1-color only)
- Heavyweight Proflex spandex fabric
- Cap sleeves and belt length cinch bottom
- Digiperf laser ventilation
- Multi-panel construction and triple stitched seams
- Double layer reinforced shoulders & reinforced taping in key areas (including collar)

**SIZING:** Men's: S-5XL **FABRICS:** Proflex  
Youth: YS-Y2XL

\* One font available for numbers / team names



PROFLEX DIGIPERF



LASER CUT VENTILATION



HEAVY WEIGHT

## TOUCHDOWN PRO PANT

PRO SELECT CORE

CONSTRUCTED - FB-MPT82-PRO

\$70.00

UNCONSTRUCTED - FB-MPT83-PRO

\$60.00

SEE PAGE 41 FOR DETAILS





# ETXRA POINT PRO <sup>H</sup> JERSEY

**PRO** SELECT CORE

FB-MSS83-PRO

\$80.00

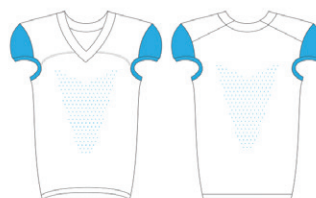
### DESCRIPTION

- Pro/Elite level jersey with tapered fit, belt length
- Pre-dyed body & sublimated sleeves
- Sublimated twill numbers front and back\*
- Sublimated home plate at bottom of collar
- Embroidered team name\* (1-color only)
- Digiperf laser ventilation
- Same sewing features as Touchdown Pro jersey

**SIZING:** Men's: S-5XL **FABRICS:** Proflex  
Youth: YS-Y2XL

\* One font available for numbers / team names

Available Base Colors



PRE-DYE PROFLEX DIGIPERF  
SUBLIMATED PROFLEX

# EXTRA POINT PRO <sup>H</sup> PANT

**PRO** SELECT CORE

CONSTRUCTED - FB-MPT80-PRO

\$60.00

UNCONSTRUCTED - FB-MPT81-PRO

\$50.00

SEE PAGE 41 FOR DETAILS

## ALL HYBRID FOOTBALL JERSEYS INCLUDE



FULLY CUSTOMIZABLE  
SLEEVE INSERTS



FULL-COLOR SUBLIMATED  
TACKLE TWILL NUMBERS



TWILL HOME PLATE &  
EMBROIDERED TEAM NAME



NEW

# SAFETY PRO H JERSEY

PRO SELECT CORE

FB-MSS09-COR

\$75.00

### DESCRIPTION

- Core level all-over sublimated jersey
- Custom sublimated twill numbers\* front & back
- Embroidered front team name\* (1-color only)
- Full length
- 8 panel construction & triple stitched seams
- Double layer reinforced shoulders
- Heavyweight Proflex spandex and mesh fabric for comfort and performance
- Same sewing features as Touchdown Pro jersey

**SIZING:** Men's: S-5XL

**FABRICS:** Proflex

Youth: YS-Y2XL

Proflex Mesh

\* One font available for numbers / team names



PROFLEX PROFLEX MESH

# TOUCHDOWN PRO JERSEY

PRO SELECT CORE

FB-MSS81-PRO

\$70.00

### DESCRIPTION

- Pro/Elite level jersey with tapered fit, fully sublimated
- Heavyweight Proflex spandex fabric
- Cap sleeves and belt length cinch bottom
- Digiperf laser ventilation
- Multi-panel construction & triple stitched seams
- Double layer reinforced shoulders
- Reinforced taping in key areas (including collar)

**SIZING:** Men's: S-5XL

**FABRICS:** Proflex

Youth: YS-Y2XL



PROFLEX DIGIPERF



LASER CUT VENTILATION



HEAVY WEIGHT

10-15 business days standard production time from artwork approval plus shipping time ///

Free freight, no setup charges, no artwork fee



# SAFETY PRO FT JERSEY

PRO SELECT **CORE**

FB-MSS02-COR

\$65.00

## DESCRIPTION

- Core level jersey
- Fully sublimated
- Full Length
- 8 panel construction & triple stitched seams
- Double layer reinforced shoulders
- Heavyweight Proflex spandex and mesh fabric for comfort and performance
- Same sewing features as Touchdown Pro jersey

**SIZING:** Men's: S-5XL

**FABRICS:** Proflex

Youth: YS-Y2XL

Proflex Mesh



PROFLEX  PROFLEX MESH



# JV FOOTBALL JERSEY

PRO SELECT **CORE**

FB-MSS06-COR

\$55.00

## DESCRIPTION

- Core level jersey
- Motion sleeve & 8 panel construction
- Double layer reinforced shoulders
- Reinforced taping in key areas (including collar)
- All seams triple stitched

**SIZING:** Men's: S-5XL

**FABRICS:** Proflex

Youth: YS-Y2XL

Proflex Mesh



PROFLEX  PROFLEX MESH



# DOUBLE OVERTIME REVERSIBLE JERSEY

PRO SELECT CORE

FB-MSS85-PRO

\$75.00

### DESCRIPTION

- Pro/Elite level single ply reversible jersey
- Heavyweight Proflex spandex fabric
- Digiperf laser ventilation
- Multi-panel construction & triple stitched seams
- Reinforced taping in key areas (including collar)
- Belt length

### SIZING:

Men's: S-5XL  
Youth: YS-Y2XL



LASER CUT VENTILATION



HEAVY WEIGHT

### FABRICS:

Proflex



□ SIDE A ■ SIDE B



10-15 business days standard production time from artwork approval plus shipping time ///

Free freight, no setup charges, no artwork fee

Sublimated Mesh Side Insert

# EXTRA POINT PRO H

**PRO** **SELECT** **CORE**

CONSTRUCTED - FB-MPT80-PRO **\$60.00**  
 UNCONSTRUCTED - FB-MPT81-PRO **\$50.00**

### DESCRIPTION

- Pro/Elite level no-fly pant
- Heavyweight Proflex spandex fabric
- Slotted silicone anti-slip waistband
- Integrated belt (constructed) or drawstring (unconstructed)
- Built-in thigh (constructed only) and knee pad pockets

**SIZING:** Men's: S-5XL Youth: YS-YXL **FABRICS:** Proflex Proflex Mesh

Available Base Colors



# TOUCHDOWN PRO PANT

**PRO** **SELECT** **CORE**

CONSTRUCTED - FB-MPT82-PRO **\$65.00**  
 UNCONSTRUCTED - FB-MPT83-PRO **\$55.00**

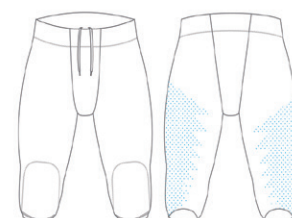
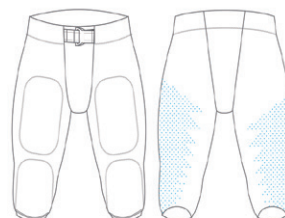
### DESCRIPTION

- Pro/Elite level no-fly pant
- Heavyweight Proflex spandex fabric
- Digiperf laser ventilation on back of leg
- Slotted silicone anti-slip waistband
- Integrated belt (constructed) or drawstring (unconstructed)
- Built-in thigh (constructed only) and knee pad pockets

**SIZING:** Men's: S-5XL Youth: YS-YXL **FABRICS:** Proflex

Constructed

Unconstructed



PROFLEX  DIGIPERF  PROFLEX  DIGIPERF





## JV <sup>FT</sup> PANT

PRO **SELECT** CORE

CONSTRUCTED - FB-MPT05-SEL **\$55.00**  
UNCONSTRUCTED - FB-MPT06-SEL **\$45.00**

### DESCRIPTION

- Select level pant
- Heavyweight spandex fabric for comfort and durability
- Slotted silicone anti-slip waistband
- Integrated belt, no-fly design
- Built-in thigh (constructed only) and knee pad pockets

**SIZING:** Men's: S-5XL **FABRICS:** Proflex  
Youth: YXS-YXL



## FAN FANWEAR JERSEY

PRO **SELECT** CORE

MEN'S - FB-MSS10-SEL **\$45.00**  
WOMEN'S - FB-WSS10-SEL

### DESCRIPTION

- Select level jersey
- No-pad fit
- 7 panel construction
- Heavyweight spandex yoke with medium weight mesh body
- Reinforced overlook stitching on all seams

**SIZING:** Men's: S-5XL **FABRICS:** Flex Durafiber  
Youth: Y3XS-YXL Flex Aerofiber  
Women's: XS-4XL

10-15 business days standard production time from artwork approval plus shipping time ///

Free freight, no setup charges, no artwork fee



# FLAG FOOTBALL





# FLAG FOOTBALL SHORT SLEEVE JERSEY

PRO **SELECT** CORE

MEN'S - FF-MSS01-SEL  
WOMEN'S - FF-WSS01-SEL

**\$45.00**

### DESCRIPTION

- Select level jersey
- No-pad fit
- 7 panel construction
- Heavyweight spandex yoke with medium weight mesh body
- Reinforced overlock stitching on all seams

### SIZING:

Men's: XS-5XL  
Youth: YS-YXL  
Women's: XS-3XL

### FABRICS:

Flex Durafiber  
Flex Aerofiber

10-15 business days standard production time from artwork approval plus shipping time ///

**Free freight, no setup charges, no artwork fee**



NEW

# COMPRESSION JERSEY

PRO **SELECT** CORE



MEN'S SLEEVELESS - SF-MSLO7-SEL	<b>\$35.00</b>
MEN'S SHORT SLEEVE - SF-MSSO7-SEL	<b>\$40.00</b>
MEN'S LONG SLEEVE - SF-MLSO7-SEL	<b>\$45.00</b>
WOMEN'S SHORT SLEEVE - SF-WSSO7-SEL	<b>\$40.00</b>
WOMEN'S LONG SLEEVE - SF-WLSO7-SEL	<b>\$45.00</b>

**DESCRIPTION**

- Modern design and reinforced seams
- Compression spandex body
- Flex Aerofiber back panel for breathability
- Accent flat lock stitching

**SIZING:**

Men's: XS-5XL  
 Youth: YXS-YXL  
 Women's: XS-3XL

**FABRICS:**

Flex Compression 2.2  
 Flex Aerofiber



# WOVEN FIELD SHORTS

PRO **SELECT** CORE

MEN'S 5" - FF-MSHO4-SEL5	<b>\$35.00</b>
MEN'S 8" - FF-MSHO1-SEL8	
WOMEN'S 2" - FF-WSHO1-SEL	

**DESCRIPTION**

- Select level woven short
- Flexweave 1.4 lightweight woven fabric
- Reinforced seams
- Excellent range of motion and moisture management

**SIZING:**

Men's: XS-5XL  
 Youth: YXS-YXL  
 Women's: XS-3XL

**FABRICS:**

Flexweave 1.4



# COMPRESSION SHORTS

PRO **SELECT** CORE

MEN'S - FF-MSHO2-SEL	<b>\$40.00</b>
WOMEN'S - FF-WSHO2-SEL	

**DESCRIPTION**

- Select level compression short
- Flex Stretch spandex fabric
- Reinforced seams
- Excellent range of motion and moisture management

**SIZING:**

Men's: XS-5XL  
 Youth: YXS-YXL  
 Women's: XS-3XL  
 Girl's: GS-GL

**FABRICS:**

Flex Stretch





# HOCKEY





# HAT TRICK JERSEY W/ LACE NECK

PRO **SELECT** CORE

HK-MLS08-SEL

\$65.00

## DESCRIPTION

- Modern pro-style jersey with lace neck
- Unique, multi-layer collar with insert
- Double shoulders and elbows
- Reinforced stitching

## SIZING:

Men's: S-3XL  
Youth: YXS-YXL  
Goalie: YGC-AGC

## FABRICS:

Airmesh  
Flexweave 1.9



# HAT TRICK JERSEY

PRO **SELECT** CORE

HK-MLS07-SEL

\$60.00

## DESCRIPTION

- Modern pro-style jersey
- Unique, multi-layer collar with insert
- Double shoulders and elbows
- Reinforced stitching

## SIZING:

Men's: S-4XL  
Youth: YXS-YXL  
Goalie: YGC-AGC

## FABRICS:

Airmesh  
Flexweave 1.9





## BLUE LINE JERSEY

PRO **SELECT** CORE

HK-MLS06-SEL

**\$60.00**

### DESCRIPTION

- Select level lace neck hockey jersey
- 5 panel construction
- Double shoulders and elbows
- Reinforced double stitching throughout
- Classic yoke

### SIZING:

Men's: S-3XL  
Youth: YXS-YXL  
Goalie: YGC-AGC

### FABRICS:

Airmesh



## BLUE LINE JERSEY

PRO **SELECT** CORE

HK-MLS05-SEL

**\$55.00**

### DESCRIPTION

- Select level hockey jersey
- 5 panel construction
- Double shoulders and elbows
- Reinforced double stitching throughout
- Classic yoke

### SIZING:

Men's: S-3XL  
Youth: YXS-YXL  
Goalie: YGC-AGC

### FABRICS:

Airmesh

NEW

## HOCKEY SINGLE PLY REVERSIBLE HOCKEY JERSEY

PRO **SELECT** CORE

HK-MLS09-SEL

**\$80.00**



### DESCRIPTION

- Single ply for lightweight and breathability
- Fell seam stitching for clean finish

### SIZING:

Men's: S/M, L/XL, 2XL  
Youth: YS/YM, YL/YXL  
Goalie: YGC-AGC

### FABRICS:

Dualwick

10-15 business days standard production time from artwork approval plus shipping time ///

Free freight, no setup charges, no artwork fee



# HOCKEY PANT/SHELL

PRO **SELECT** CORE

BELT - HK-MPT03-SEL  
DRAWSTRING - HK-MPT04-COR

**\$50.00**  
**\$40.00**

## DESCRIPTION

- Fully custom sublimated shell completes uniform look
- Medium weight stretch woven fabric
- Belt closure (Select)
- Drawstring waistband (Core)
- Shell only - no pads/pants included

## SIZING:

Men's: S-XL  
Youth: YS-YXL

## FABRICS:

Calico 2.2 (PLUS)  
Proflex (PLUS)  
Flexweave 1.9 (CORE)



# HOCKEY SOCKS

PRO **SELECT** CORE

HK-MSK03-COR

**\$35.00**

## DESCRIPTION

- Core level hockey sock
- Double layer reinforced knee
- Velcro strips
- Double stitching throughout

## SIZING:

Men's: S/M, L/XL, 2XL  
Youth: YS/YM, YL/YXL

## FABRICS:

Airmesh



NEW

# REVERSIBLE SINGLE PLY HOCKEY SOCKS

PRO **SELECT** CORE

HK-MSK09-SEL

**\$45.00**

## DESCRIPTION

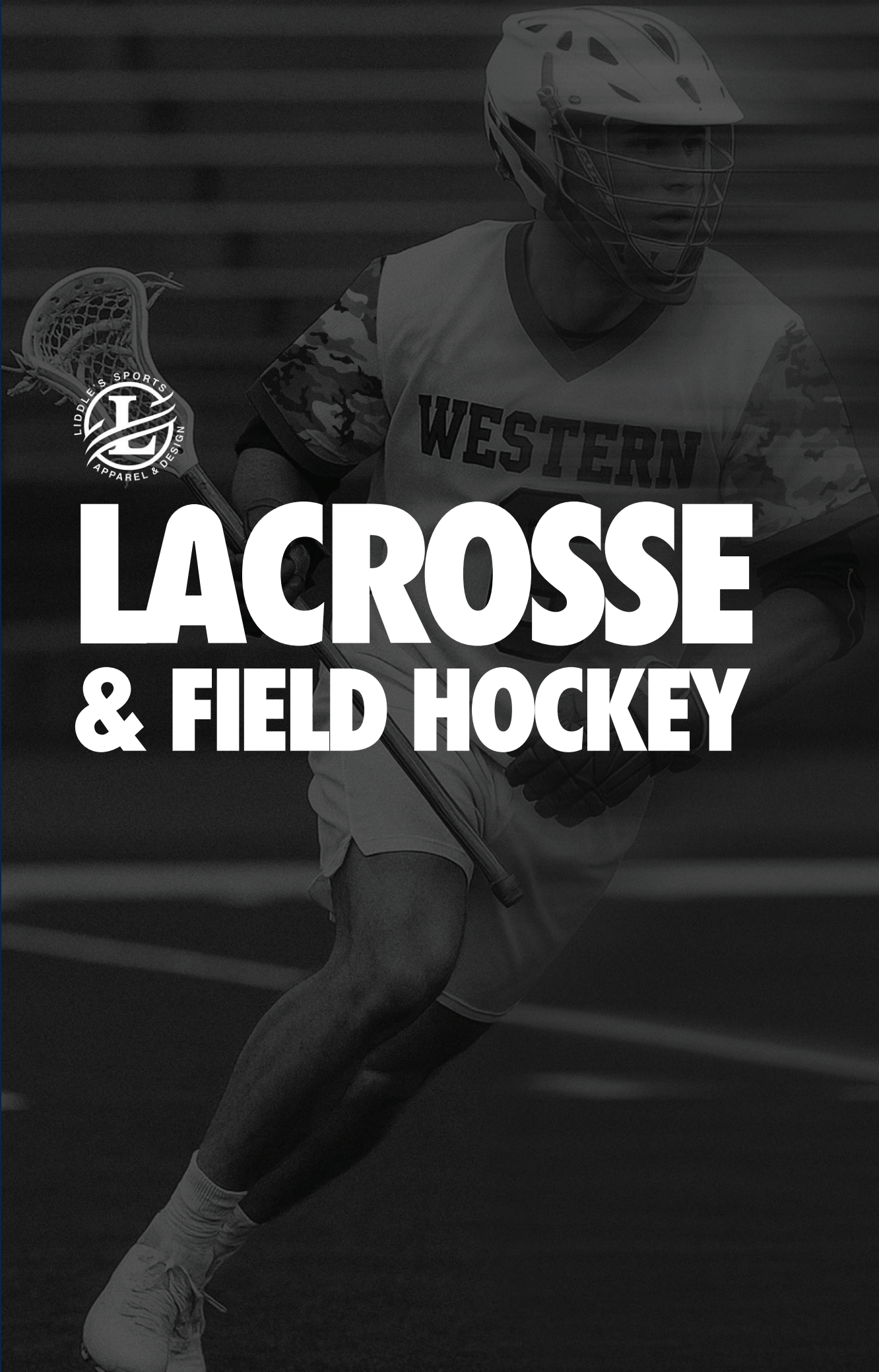
- Single ply for lightweight and breathability
- Velcro strips
- Fell seam stitching for clean finish

## SIZING:

Men's: S/M, L/XL, 2XL  
Youth: YS/YM, YL/YXL

## FABRICS:

Dualwick



# LACROSSE & FIELD HOCKEY

# PRO SERIES

## CRANK SHORT SLEEVE JERSEY

PRO SELECT CORE

LX-MSS81-PRO

\$60.00

### DESCRIPTION

- Pro/Elite level short sleeve jersey
- Flexweave woven fabric front with Digiperf laser perforations for enhanced ventilation
- Flex Aerofiber mesh back for breathability
- Features a sleek collar design, entire jersey top-stitched for durability & appearance

### SIZING:

Men's: XS-5XL

### FABRICS:

Flexweave 1.4  
Flex Aerofiber



LASER CUT VENTILATION



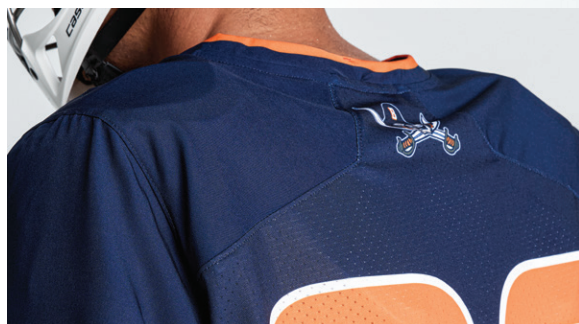
PREMIUM WOVEN



4-WAY STRETCH



□ FLEXWEAVE 1.4    ■ DIGIPERF  
■ FLEX AEROFIBER



See Shorts  
on next page



FLEXWEAVE 1.4
  DIGIPERF  
 FLEX AEROFIBER

# CRANK SLEEVELESS VEST

PRO SELECT CORE

LX-MSL81-PRO

\$55.00

## DESCRIPTION

- Pro/Elite level sleeveless jersey
- Flexweave woven fabric front with Digiperf laser perforations for enhanced ventilation
- Flex Aerofiber mesh back for breathability
- Modern design collar for added flair, entire vest top-stitch for durability & appearance

### SIZING:

Men's: S-5XL  
Youth: YXS-YXL

### FABRICS:

Flexweave 1.4  
Flex Aerofiber



LASER CUT VENTILATION



4-WAY STRETCH

# CRANK SHORTS

PRO SELECT CORE



FLEXWEAVE 1.4
  DIGIPERF  
 FLEX AEROFIBER

**NEW** 5" NO POCKETS - LX-MSH81-PRO5 \$45.00  
7" NO POCKETS - LX-MSH81-PRO7  
9" NO POCKETS - LX-MSH81-PRO9

**NEW** 5" W/ POCKETS - LX-MSH82-PRO5 \$50.00  
7" W/ POCKETS - LX-MSH82-PRO7  
9" W/ POCKETS - LX-MSH82-PRO9

## DESCRIPTION

- Pro/Elite level short
- Flexweave woven fabric with Digiperf laser perforations for enhanced ventilation
- Flex Aerofiber inner thigh panel for enhanced breathability
- Waistband plate for additional customization
- Inner lace drawcord

### SIZING:

Men's: S-5XL  
Youth: YXS-YXL

### FABRICS:

Flexweave 1.4  
Flex Aerofiber



LASER CUT VENTILATION



4-WAY STRETCH

10-15 business days standard production time from artwork approval plus shipping time ///

Free freight, no setup charges, no artwork fee



**NEW**

# CHECK FT (Select Only)

## SHORT SLEEVE JERSEY

PRO **SELECT** CORE

SELECT - LX-MSS01-SEL  
CORE - LX-MSS01-COR

**\$55.00**  
**\$50.00**

### DESCRIPTION

- Select and Core level jerseys
- Main body with Flex Aerofiber (Select) or Airmesh (Core)
- Flex Durafiber collar
- Moisture wicking, anti-microbial, excellent UPF

### SIZING:

Men's: S-5XL  
Youth: YXS-YXL

### FABRICS:

Flex Aerofiber (Select)  
AirMesh (Core)  
Flex Durafiber



**NEW**

# CHECK FT (Select Only)

## SLEEVELESS VEST

PRO **SELECT** CORE

SELECT - LX-MSL01-SEL  
CORE - LX-MSL01-COR

**\$50.00**  
**\$45.00**

### DESCRIPTION

- Select and Core level sleeveless vests
- Main body with Flex Aerofiber (Select) or Airmesh (Core)
- Flex Durafiber collar
- Moisture wicking, anti-microbial, excellent UPF

### SIZING:

Men's: S-5XL  
Youth: YXS-YXL

### FABRICS:

Flex Aerofiber (Select)  
AirMesh (Core)  
Flex Durafiber



**NEW**

# CHECK FT (Select Only)

## SHORTS NO POCKETS

PRO **SELECT** CORE

SELECT 5" - LX-MSH01-SEL5  
SELECT 7" - LX-MSH01-SEL7  
SELECT 9" - LX-MSH01-SEL9

**\$40.00**

CORE 5" - LX-MSH01-COR5  
CORE 7" - LX-MSH01-COR7  
CORE 9" - LX-MSH01-COR9

**\$35.00**

### DESCRIPTION

- Select and Core level shorts
- Inner lace drawcord
- Waistband plate for additional customization
- Flex Aerofiber (Select) or Airmesh (Core)
- 5", 7" or 9" inseam

### SIZING:

Men's: XS-5XL  
Youth: YXS-YXL

### FABRICS:

Flex Aerofiber (Select)  
AirMesh (Core)



NEW

# CHECK SHORTS W/ POCKETS

PRO **SELECT** CORE

SELECT 5" - LX-MSHO2-SEL5  
 SELECT 7" - LX-MSHO2-SEL7  
 SELECT 9" - LX-MSHO2-SEL9

\$45.00

CORE 5" - LX-MSHO2-COR5  
 CORE 7" - LX-MSHO2-COR7  
 CORE 9" - LX-MSHO2-COR9

\$40.00

## DESCRIPTION

- Select and Core level shorts
- Same construction as shorts without pockets
- Flex Aerofiber (Select) or Airmesh (Core)
- 5", 7" or 9" inseam

## SIZING:

Men's: XS-5XL  
 Youth: YXS-YXL

## FABRICS:

Flex Aerofiber (Select)  
 AirMesh (Core)



NEW

# LADIES DRAW <sup>FT</sup> SHORT SLEEVE JERSEY

PRO **SELECT** CORE

LX-WSS03-SEL

\$45.00

## DESCRIPTION

- Select level short sleeve jersey
- Flex dry knitted spandex front and Flex Aerofiber mesh back panel
- Modified v-neck with raglan shoulder

## SIZING:

Women's: XS-3XL  
 Girl's: GXS-GXL

## FABRICS:

Flex Dry  
 Flex Aerofiber



FLEXDRY  FLEX AEROFIBER



NEW

# LADIES DRAW <sup>FT</sup> SLEEVELESS JERSEY

PRO **SELECT** CORE

LX-WSLO3-SEL

\$40.00

## DESCRIPTION

- Select level sleeveless jersey
- Flex dry knitted spandex front and Flex Aerofiber mesh back panel, this jersey offers both flexibility and durability for maximum comfort during gameplay
- Modified v-neck with raglan shoulder

## SIZING:

Women's: XS-3XL  
 Girl's: GXS-GXL

## FABRICS:

Flex Dry  
 Flex Aerofiber



FLEXDRY  FLEX AEROFIBER

10-15 business days standard production time from artwork approval plus shipping time ///

Free freight, no setup charges, no artwork fee



NEW

# LADIES DRAW FT SLEEVELESS RACERBACK JERSEY

PRO **SELECT** CORE

LX-WSLO4-SEL

\$40.00

## DESCRIPTION

- Select level sleeveless racerback jersey
- Flex dry knitted spandex front and Flex Aerofiber mesh back panel, this jersey offers both flexibility and durability for maximum comfort during gameplay
- Modified v-neck



FLEXDRY  FLEX AEROFIBER

## SIZING:

Women's: XS-3XL  
Girl's: GXS-GXL

## FABRICS:

Flex Dry  
Flex Aerofiber

# LADIES DRAW FT (Skirt Only) SKIRT/SKORT

PRO **SELECT** CORE

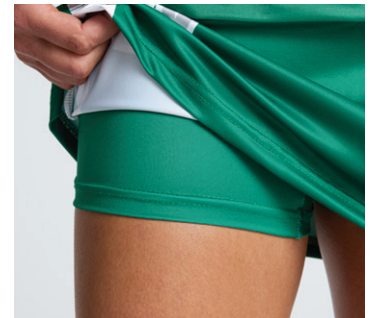
SKIRT - LX-WSHO2-SEL

SKORT - LX-WSHO3-SEL

\$40.00  
\$45.00

## DESCRIPTION

- Crafted from a high-quality medium weight Flexdry spandex
- Elastic waistband ensures a secure and comfortable fit



## SIZING:

Women's: XS-3XL  
Girl's: GXS-GXL

## FABRICS:

Flex Dry

NEW

# LADIES DRAW FT SHORTS

PRO **SELECT** CORE

LX-WSHO3-SEL5

\$42.00

## DESCRIPTION

- Select level short
- Waistband plate for additional customization
- Flex dry knitted spandex
- 5" inseam

## SIZING:

Women's: XS-3XL  
Girl's: GXS-GXL

## FABRICS:

Flex Dry





# QTCN

## SHORT SLEEVE T-SHIRT (GREAT FOR SHOOTER SHIRTS)

PRO **SELECT** CORE

CREW NECK (DYNALITE) - SF-MSS50-DYN **\$30.00**  
 V-NECK (DYNALITE) - SF-MSS51-DYN

+\$5.00 For Dynapin / +\$10.00 for Ultraflex

\*\*For full list of SKUs see page 117

DESCRIPTION	SIZING:	FABRICS:
• Set-in sleeves	Men's: S-5XL	Dynalite (Core)
• Drop tail design	Women's: S-3XL	Dynapin (Select)
• Neck taping	Youth: XS-XL	Ultraflex (Select+)
• Self material collar		



# QTVN

## LONG SLEEVE T-SHIRT (GREAT FOR SHOOTER SHIRTS)

PRO **SELECT** CORE

CREW NECK (DYNALITE) - SF-MLS50-DYN **\$32.00**  
 V-NECK (DYNALITE) - SF-MLS51-DYN

+\$5.00 For Dynapin / +\$10.00 for Ultraflex

\*\*For full list of SKUs see page 117

DESCRIPTION	SIZING:	FABRICS:
• Set-in sleeves	Men's: S-5XL	Dynalite (Core)
• Drop tail design	Women's: S-3XL	Dynapin (Select)
• Neck taping	Youth: XS-XL	Ultraflex (Select+)
• Self material collar		



**NEW**

# LACROSSE

## SINGLE PLY REVERSIBLE SKIRT

PRO **SELECT** CORE

LX-WSH07-SEL **\$45.00**

DESCRIPTION
• Select level reversible skirt
• 1-ply reversible for lightweight and breathability
• Constructed from Dualwick

SIZING:	FABRICS:
Women's: XS-3XL	Dualwick

10-15 business days standard production time from artwork approval plus shipping time ///

Free freight, no setup charges, no artwork fee





NEW

# LACROSSE

## SINGLE PLY REVERSIBLE VEST

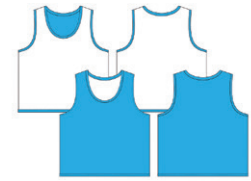
PRO **SELECT** CORE

MEN'S - LX-MSLO7-SEL

WOMEN'S - LX-WSLO7-SEL

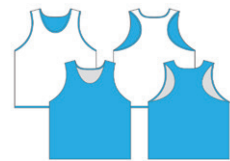
\$45.00

Men's Cut



SIDE A  SIDE B

Women's Cut



SIDE A  SIDE B

### DESCRIPTION

- Select level reversible vest
- 1-ply reversible for lightweight and breathability

### SIZING:

Men's: 2XS/XS, S/M, L/XL, 2/3XL

Women's: 2XS/XS, S/M, L/XL, 2/3XL

### FABRICS:

Dualwick

NEW

# LACROSSE

## SINGLE PLY REVERSIBLE SHORTS

PRO **SELECT** CORE

MEN'S 5" - LX-MSHO7-SEL5

MEN'S 7" - LX-MSHO7-SEL7

MEN'S 9" - LX-MSHO7-SEL9

WOMEN'S 5" - LX-WSHO7-SEL5

\$45.00

### DESCRIPTION

- Select level reversible short
- 1-ply reversible for lightweight and breathability

### SIZING:

Men's: 2XS/XS, S/M, L/XL, 2/3XL

Women's: 2XS/XS, S/M, L/XL, 2/3XL

### FABRICS:

Dualwick



SIDE A  SIDE B



FABRIC DETAIL



FELL SEAM STITCHING

Visit page 114 for more information on Fabrics /// Visit page 112 for information on fonts and colors



# BRAVEHEART

## 2-PLY REVERSIBLE JERSEY

PRO SELECT CORE

MEN'S - LX-MSL08-COR  
WOMEN'S - LX-WSL08-COR

\$40.00

### DESCRIPTION

- Core level reversible vest (women's is racerback cut)
- 2-ply reversible with seam sealed technology
- Constructed from high-quality Dyna Dry a traditional mock mesh fabric

### SIZING:

Men's: 2XS/XS, S/M, L/XL, 2/3XL

Women's: 2XS/XS, S/M, L/XL, 2/3XL

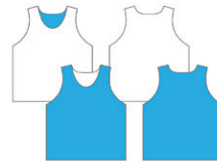
### FABRICS:

Dynalite



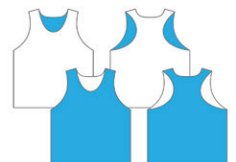
Women's Racerback

Men's Cut



□ SIDE A ■ SIDE B

Women's Cut



□ SIDE A ■ SIDE B



# DODGE BOX

## BOX LACROSSE JERSEY

PRO SELECT CORE

LX-MLS10-COR

\$50.00

### DESCRIPTION

- Core level box lacrosse jersey
- 5 panel construction
- Double shoulders and elbows
- Reinforced double stitching throughout
- Airmesh fabric
- Classic yoke styling

### SIZING:

Men's: S-5XL  
Youth: YS-YXL  
Goalie: GL-G5XL

### FABRICS:

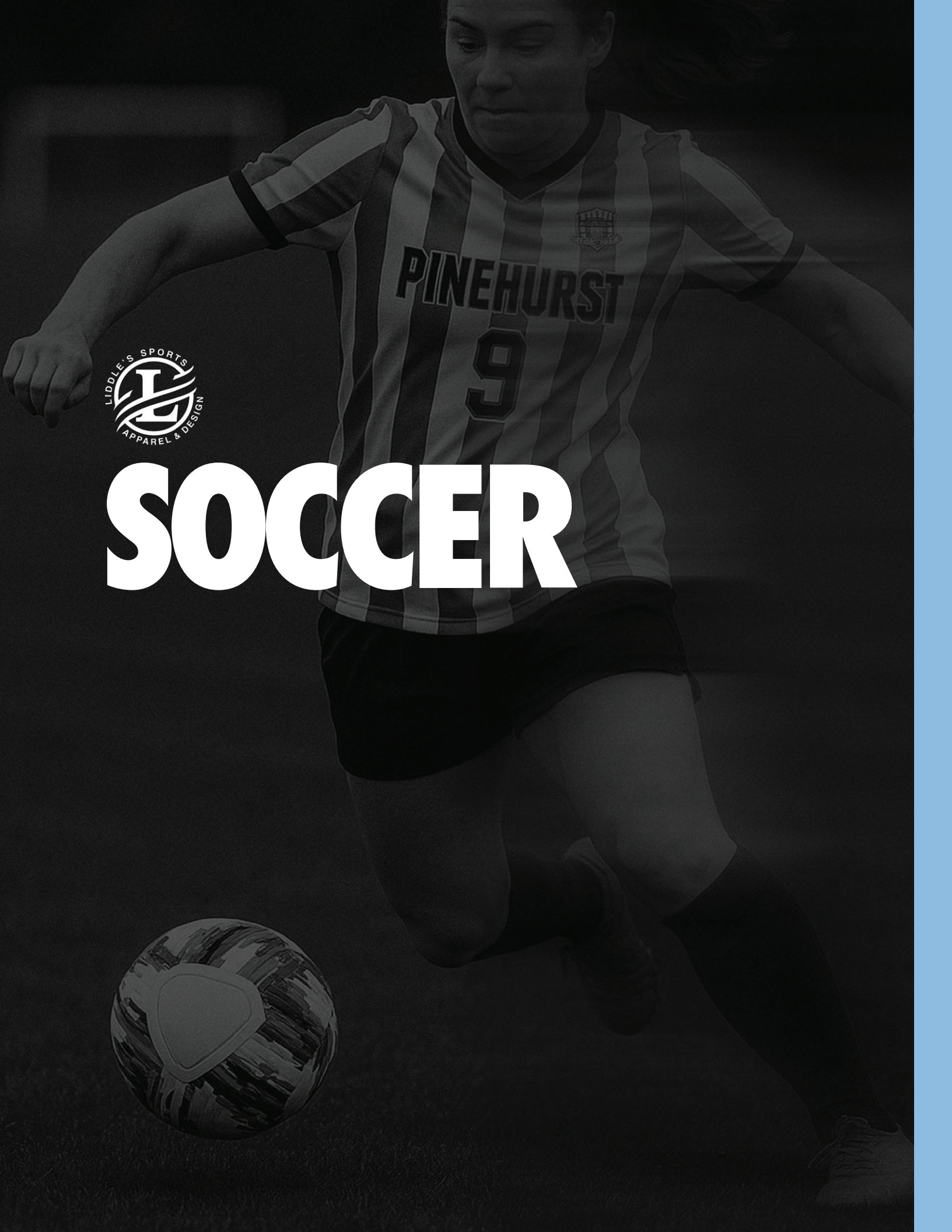
Airmesh

10-15 business days standard production time from artwork approval plus shipping time ///

Free freight, no setup charges, no artwork fee



# SOCCER





# PRO SERIES

NEW

## IMPERIAL CREW NECK JERSEY

PRO SELECT CORE

MEN'S - SO-MSS81-PRO  
WOMEN'S - SO-WSS81-PRO

\$40.00

### DESCRIPTION

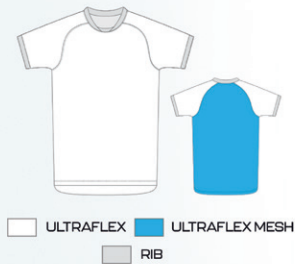
- Pro/Elite level short sleeve crew neck jersey
- Lightweight 4-way stretch Ultraflex flat knit front with stretch mesh back for breathability on the field
- Raglan cut for better fit and performance

### SIZING:

Men's: XS-5XL  
Youth: YXS-YXL  
Women's: XS-4XL

### FABRICS:

Ultraflex



ULTRAFLEX ULTRAFLEX MESH RIB



NEW

# IMPERIAL SHORT

PRO SELECT CORE

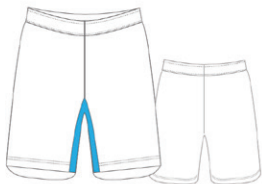
MEN'S 5" - SO-MSH81-PRO5 **\$35.00**  
 MEN'S 7" - SO-MSH81-PRO7  
 WOMEN'S 5" - SO-WSH81-PRO5

## DESCRIPTION

- Pro/Elite level short
- Lightweight Ultraflex fabric
- Men's: 5" & 7" inseam, Women's & Youth: 5" inseam
- Inner lace drawstring

## SIZING:

Men's: XS-5XL  
 Youth: YS-YXL  
 Women's: XS-4XL



ULTRAFLEX ULTRAFLEX MESH

## FABRICS:

Ultraflex



4-WAY STRETCH



PREMIUM KNIT

NEW

# IMPERIAL V-NECK JERSEY

PRO SELECT CORE

MEN'S - SO-MSS82-PRO **\$40.00**  
 WOMEN'S - SO-WSS82-PRO

## DESCRIPTION

- Pro/Elite level short sleeve v-neck jersey
- Lightweight 4-way stretch Ultraflex flat knit front with stretch mesh back for breathability on the field
- Raglan out for better fit and performance

## SIZING:

Men's: XS-5XL  
 Youth: YXS-YXL  
 Women's: XS-4XL



ULTRAFLEX ULTRAFLEX MESH RIB

## FABRICS:

Ultraflex



4-WAY STRETCH



PREMIUM KNIT



NEW

# ASSIST CREW NECK JERSEY

PRO **SELECT** CORE

## WIFFLE MESH

MEN'S - SO-MSS01-SEL **\$40.00**  
WOMEN'S - SO-WSS01-SEL

## DYNALITE

MEN'S - SO-MSS01-COR **\$35.00**  
WOMEN'S - SO-WSS01-COR

### DESCRIPTION

- Select & Core level short sleeve crew neck jersey
- Lightweight Wiffle Mesh or Dynalite fabrics
- Ribbed collar and arm opening

### SIZING:

Men's: XS-5XL  
Youth: YXS-YXL  
Women's: XS-4XL

### FABRICS:

Wiffle Mesh (Select)  
Dynalite (Core)



NEW

# ASSIST V-NECK JERSEY

PRO **SELECT** CORE

## WIFFLE MESH

MEN'S - SO-MSS02-SEL **\$40.00**  
WOMEN'S - SO-WSS02-SEL

## DYNALITE

MEN'S - SO-MSS02-COR **\$35.00**  
WOMEN'S - SO-WSS02-COR

### DESCRIPTION

- Select & Core level short sleeve v-neck jersey
- Lightweight Wiffle Mesh or Dynalite fabrics
- Ribbed collar and arm opening

### SIZING:

Men's: XS-5XL  
Youth: YXS-YXL  
Women's: XS-4XL

### FABRICS:

Wiffle Mesh (Select)  
Dynalite (Core)

10-15 business days standard production time from artwork approval plus shipping time ///

Free freight, no setup charges, no artwork fee



NEW

## ASSIST SHORT

PRO **SELECT** CORE

### WIFFLE MESH

MEN'S 5" - SO-MSHO1-SEL5 **\$40.00**

MEN'S 7" - SO-MSHO1-SEL7

WOMEN'S 5" - SO-WSHO1-SEL5

### DYNALITE

MEN'S 5" - SO-MSHO1-COR5 **\$35.00**

MEN'S 7" - SO-MSHO1-COR7

WOMEN'S 5" - SO-WSHO1-COR5

### DESCRIPTION

- Select & Core level short
- Lightweight Wiffle Mesh or Dynalite fabrics
- Men's 5" & 7" inseams & Women's 5" inseams

### SIZING:

Men's: S-3XL

Youth: YS-YXL

Women's: XS-4XL

### FABRICS:

Wiffle Mesh (Select)

Dynalite (Core)

NEW

## ASSIST GOALIE JERSEY

PRO **SELECT** CORE

MEN'S - SO-MLS09-COR **\$40.00**

WOMEN'S - SO-WLS09-COR

### DESCRIPTION

- Core level long sleeve v-neck jersey
- Lightweight Dynalite fabric
- Ribbed collar and sleeve cuffs for enhanced comfort

### SIZING:

Men's: XS-5XL

Youth: YXS-YXL

Women's: XS-4XL

### FABRICS:

Dynalite



**REINFORCED  
PADDED ELBOWS**





# TRACK & FIELD

BU DAKDALE  
2464

BU DAKDALE  
2466

# PRO SERIES

## ROYAL SINGLET

PRO SELECT CORE

MEN'S - TK-MSL81-PRO **\$35.00**  
WOMEN'S - TK-WSL81-PRO

### DESCRIPTION

- Pro/Elite level sleeveless racerback jersey
- Lightweight Flex Pinstripe spandex fabric for comfort and style
- Flat lock stitching throughout

### SIZING:

Men's: XS-5XL  
Youth: YS-YXL  
Women's: XS-3XL

### FABRICS:

Flex Pinstripe

## ROYAL SHORT

PRO SELECT CORE

MEN'S - TK-MSH81-PRO2 **\$40.00**  
WOMEN'S - TK-WSH81-PRO2

### DESCRIPTION

- Pro/Elite level track short
- Digiperf laser ventilation
- Flexweave 1.4 woven spandex fabric
- Loose fit vented leg design for comfort
- Drawstring waistband
- 2" inseam

### SIZING:

Men's: S-5XL  
Youth: YS-YXL  
Women's: XS-3XL



### FABRICS:

Flexweave 1.4

FLEXWEAVE 1.4  DIGIPERF





# DASH SINGLET

PRO **SELECT** CORE

## ULTRAFLEX FABRIC

MEN'S - TK-MSLO7-SEL **\$35.00**  
 WOMEN'S - TK-WSLO7-SEL

## WIFFLE MESH FABRIC

MEN'S - TK-MSLO7-COR **\$30.00**  
 WOMEN'S - TK-WSLO7-COR

### DESCRIPTION

- Select and Core level premium running jersey
- Lightweight Wiffle Mesh or Ultraflex flat knit front with stretch mesh back
- Accent flatlock stitching for style and durability

### SIZING:

Men's: XS-5XL  
 Youth: YS-YXL  
 Women's: XS-3XL

### FABRICS:

Ultraflex (Select)  
 Wiffle Mesh (Core)



# DASH SHORT

PRO **SELECT** CORE

MEN'S - TK-MSHO2-SEL2 **\$35.00**  
 WOMEN'S - TK-WSHO2-SEL2

### DESCRIPTION

- Select level track short
- Flexweave woven spandex fabric
- Loose fit leg design for comfort
- Drawstring waistband
- 2" inseam

### SIZING:

Men's: S-5XL  
 Youth: YS-YXL  
 Women's: XS-3XL

### FABRICS:

Flexweave 1.4



 FLEXWEAVE 1.4

10-15 business days standard production time from artwork approval plus shipping time ///

Free freight, no setup charges, no artwork fee



## RELAY <sup>QT</sup> RUNNING SINGLET

PRO SELECT **CORE**

MEN'S - TK-MSLO1-COR  
WOMEN'S - TK-WSLO1-COR

**\$25.00**

### DESCRIPTION

- Core level traditional running singlet
- Lightweight interlock fabric construction
- Comfortable and breathable

### SIZING:

Men's: S-5XL  
Youth: YS-YXL  
Women's: XS-3XL

### FABRICS:

Dynalite



## TREK <sup>QT</sup> COMPRESSION SHORTS

PRO **SELECT** CORE

MEN'S - FF-MSHO2-SEL  
WOMEN'S - FF-WSHO2-SEL

**\$40.00**

### DESCRIPTION

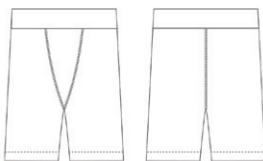
- Select level compression short
- Flex Stretch fabric
- Moisture wicking fabric for moisture management
- Accent flatlock stitching
- Men's feature extended length design
- Variable inseam

### SIZING:

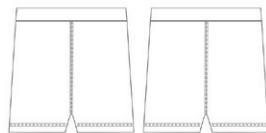
Men's: XS-5XL  
Youth: YS-YXL  
Women's: XS-3XL  
Girl's: GS-GXL

### FABRICS:

Flex Stretch



MEN'S LENGTH



WOMEN'S LENGTH



# VOLLEYBALL

22

# PRO SERIES

NEW

## DOMINATE LONG SLEEVE JERSEY

PRO SELECT CORE

VB-WLS81-PRO

\$50.00

### DESCRIPTION

- Elite/Pro-Level long sleeve jersey
- Flex Dry spandex fabric front
- Flex Aerofiber spandex mesh back for enhanced ventilation
- Excellent range of motion & pick resistance
- Raglan cut for better fit and performance

### SIZING:

Women's: XS-3XL

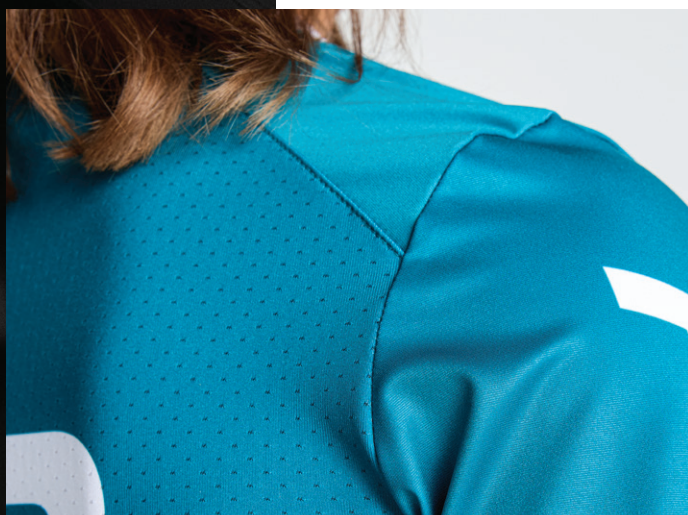
Girl's: GS-GXL

### FABRICS:

Flex Dry  
Flex Aerofiber



□ FLEX DRY    ■ FLEX AEROFIBER





NEW

## DOMINATE SHORT SLEEVE JERSEY

PRO SELECT CORE

VB-WSS81-PRO

\$45.00

### DESCRIPTION

- Elite/Pro-Level short sleeve jersey
- Flex Dry spandex fabric front
- Flex Aerofiber spandex mesh back for enhanced ventilation
- Excellent range of motion
- Raglan cut for better fit

### SIZING:

Women's: XS-3XL  
Girl's: GS-GXL

### FABRICS:

Flex Dry  
Flex Aerofiber



□ FLEX DRY ■ FLEX AEROFIBER



NEW

## DOMINATE SLEEVELESS JERSEY

PRO SELECT CORE

VB-WSL81-PRO

\$40.00

### DESCRIPTION

- Elite/Pro-Level sleeveless jersey
- Flex Dry spandex fabric front
- Flex Aerofiber spandex mesh back for enhanced ventilation
- Excellent range of motion
- Raglan cut for better fit

### SIZING:

Women's: XS-3XL  
Girl's: GS-GXL

### FABRICS:

Flex Dry  
Flex Aerofiber



□ FLEX DRY ■ FLEX AEROFIBER

10-15 business days standard production time from artwork approval plus shipping time ///

Free freight, no setup charges, no artwork fee



# DOMINATE <sup>QT</sup> VOLLEYBALL SHORT

PRO **SELECT** CORE

STANDARD - VB-WSHO1-SEL3  
LONG - VB-WSHO1-SEL7

\$35.00

\$40.00

## DESCRIPTION

- Select level short
- Compression fit with 3" or 7" inseam
- Flex Stretch heavyweight compression spandex fabric
- Comfortable and durable
- Fully sublimated

## SIZING:

Women's: XS-3XL

Girl's: GXS-GXL

## FABRICS:

Flexstretch



NEW

# HYBRID <sup>H</sup> <sup>QT</sup> VOLLEYBALL SHORT

PRO **SELECT** CORE

STANDARD - VB-WSHO2-SEL3  
LONG - VB-WSHO2-SEL7

\$35.00

\$40.00

## DESCRIPTION

- Select level short
- Compression fit with 3" or 7" inseam
- Flex Stretch heavyweight compression spandex fabric
- Comfortable and durable
- Nylon pre-dyed base fabric with sublimated side inserts

## SIZING:

Women's: XS-3XL

Girl's: GXS-GXL

## FABRICS:

Nylon

Flexstretch

Available Base Colors



■ PRE-DYED NYLON ■ SUBLIMATED INSERT





# QTCN

## SLEEVELESS CREW NECK T-SHIRT

PRO **SELECT** CORE

DYNALITE - SF-MSL50-DYN

**\$30.00**

**+\$5.00 For Dynapin / +\$10.00 for Ultraflex**

\*\*For full list of SKUs see page 117

### DESCRIPTION

- Sleeveless t-shirt
- Drop tail design
- Neck taping
- Self material collar

### SIZING:

Men's: S-4XL  
 Women's: S-3XL  
 Youth: XS-XL

### FABRICS:

Dynalite (Core)  
 Dynapin (Select)  
 Ultraflex (Select+)

# QT

## SHORT

PRO **SELECT** CORE

5" MEN'S (Dynalite) - SF-MSH55-DYN5

7" MEN'S (Dynalite) - SF-MSH53-DYN7

9" MEN'S (Dynalite) - SF-MSH51-DYN9

3" WOMEN'S (Dynalite) - SF-WSH55-DYN3

5" WOMEN'S (Dynalite) - SF-WSH53-DYN5

7" WOMEN'S (Dynalite) - SF-WSH51-DYN7

**\$30.00**

**NEW**

**+\$5.00 For Dynapin / +\$10.00 for Ultraflex**

\*\*For full list of SKUs see page 117

### DESCRIPTION

- Lace Drawcord
- Cover hemmed leg openings
- 5", 7", 9" (Men's) and 3", 5", 7" (Women's) inseams

### SIZING:

Men's: S-4XL  
 Women's: S-3XL  
 Youth: XS-XL

### FABRICS:

Dynalite (Core)  
 Dynapin (Select)  
 Ultraflex (Select+)

**\*Green highlights indicate "Most Popular" fabrics**



## QTVN SHORT SLEEVE T-SHIRT

PRO **SELECT** CORE

CREW NECK (DYNALITE) - SF-MSS50-DYN **\$30.00**  
V-NECK (DYNALITE) - SF-MSS51-DYN

**+\$5.00 For Dynapin / +\$10.00 for Ultraflex**

\*\*For full list of SKUs see page 117

DESCRIPTION	SIZING:	FABRICS:
• Set-in sleeves	Men's: S-4XL	Dynalite (Core)
• Drop tail design	Women's: S-3XL	Dynapin (Select)
• Neck taping	Youth: XS-XL	Ultraflex (Select+)
• Self material collar		



## QTVN LONG SLEEVE T-SHIRT

PRO **SELECT** CORE

CREW NECK - SF-MLS50-DYN **\$32.00**  
V-NECK - SF-MLS51-DYN

**+\$5.00 For Dynapin / +\$10.00 for Ultraflex**

\*\*For full list of SKUs see page 117

DESCRIPTION	SIZING:	FABRICS:
• Set-in sleeves	Men's: S-4XL	Dynalite (Core)
• Drop tail design	Women's: S-3XL	Dynapin (Select)
• Neck taping	Youth: XS-XL	Ultraflex (Select+)
• Self material collar		



**NEW**

## QTVN SLEEVELESS RACERBACK V-NECK T-SHIRT

PRO **SELECT** CORE

DYNALITE - SF-WSL53-DYN **\$30.00**

**+\$5.00 For Dynapin / +\$10.00 for Ultraflex**

\*\*For full list of SKUs see page 117

DESCRIPTION	SIZING:	FABRICS:
• Drop tail design	Women's: S-3XL	Dynalite (Core)
• Neck taping	Girl's: XS-XL	Dynapin (Select)
• Self material collar		Ultraflex (Select+)
• Racerback design		



# WRESTLING

BEARS



# PIN SINGLET

PRO **SELECT** CORE

## WITHOUT SILICONE LEG BAND

MEN'S - WR-MSLO1-SEL

WOMEN'S - WR-WSLO1-SEL

**\$50.00**

## WITH SILICONE LEG BAND

MEN'S - WR-MSLO2-SEL

WOMEN'S - WR-WSLO2-SEL

**\$55.00**

### DESCRIPTION

- Heavyweight spandex fabric for performance/durability
- 2 panel construction
- Double overlook stitching
- Binding trim on arm and neck openings

### SIZING:

Men's: S-4XL  
 Youth: YXS-YXL  
 Women's: XS-5XL

### FABRICS:

Flex Stretch



Silicone Leg Band Detail



## ESCAPE SLEEVELESS COMPRESSION JERSEY

PRO **SELECT** CORE

WR-MSLO4-SEL

**\$35.00**

### DESCRIPTION

- Select level sleeveless jersey
- Extended length tail (back)
- Flex Compression 2.2 spandex fabric
- Reinforced seams
- Excellent range of motion and moisture management

### SIZING:

Men's: XS-5XL  
Youth: YXS-YXL

### FABRICS:

Flex Compression 2.2



## ESCAPE SHORT SLEEVE COMPRESSION JERSEY

PRO **SELECT** CORE

MEN'S - WR-MSS05-SEL

**\$40.00**

WOMEN'S - WR-WSS05-SEL

### DESCRIPTION

- Select level compression short sleeve raglan crew neck shirt
- Extended length tail (back)
- 4 panel construction
- Flex Compression 2.2 spandex fabric
- Reinforced seams
- Excellent range of motion and moisture management

### SIZING:

Men's: XS-5XL  
Youth: YXS-YXL  
Women's: 2XS-3XL

### FABRICS:

Flex Compression 2.2



## KNUCKLE MMA STYLE WOVEN SHORT

PRO **SELECT** CORE

WR-MSHO1-SEL9

**\$45.00**

### DESCRIPTION

- Select level premium MMA short
- Flexweave 1.9 spandex woven fabric for comfort and durability
- Reinforced flat lock stitching strengthens stress points
- Waistband plate for additional customization
- Men's 9" inseam / Youth 7" inseam

### SIZING:

Men's: S-3XL  
Youth: Y2XS-YXL

### FABRICS:

Flex Weave 1.9  
Flex Durafiber

10-15 business days standard production time from artwork approval plus shipping time ///

Free freight, no setup charges, no artwork fee



# RUGBY



WINTER  
SPORT





# PRO SERIES

## SCRUM SHORT SLEEVE JERSEY

PRO SELECT CORE

MEN'S - RU-MSS81-PRO

WOMEN'S - RU-WSS81-PRO

\$45.00

### DESCRIPTION

- Pro/Elite level compression fit jersey
- V-neck collar style
- Heavyweight spandex fabric for flexibility/durability
- Reinforced seams and collar
- Raglan sleeve for better fit

### SIZING:

Men's: XS-5XL

Youth: YXS-YXL

Women's: XS-3XL

### FABRICS:

Flex Durafiber



10-15 business days standard production time from artwork approval plus shipping time ///

Free freight, no setup charges, no artwork fee



## MAUL SHORT SLEEVE JERSEY

PRO **SELECT** CORE

RU-MSS02-SEL

\$45.00

### DESCRIPTION

- Select level short sleeve v-neck jersey
- V-neck collar style
- Heavyweight Proknit 2.7 fabric for durability
- Reinforced seams and collar
- Raglan sleeve for better fit

### SIZING:

Men's: XS-5XL  
Youth: YXS-YXL  
Women's: XS-3XL

### FABRICS:

Proknit 2.7



## RUCK SHORT WITH ANTI-SLIP

PRO **SELECT** CORE

MEN'S - RU-MSH01-SEL

\$40.00

WOMEN'S - RU-WSH01-SEL

### DESCRIPTION

- Select level short
- Silicone anti-slip draw-string waistband
- Heavyweight twill body for strength
- Spandex crotch for added comfort
- Excellent range of motion
- Graduated inseams

### SIZING:

Men's: XS-5XL  
Youth: YXS-YXL  
Women's: XS-3XL

### FABRICS:

Calico 2.2  
Flex Durafiber



# CHEER





## PREMIER V-NECK

PRO **SELECT** CORE

LONG SLEEVE - CH-WLSO4-SEL

**\$40.00**

SLEEVELESS - CH-WSLO4-SEL

**\$35.00**

### DESCRIPTION

- Select level long sleeve v-neck jersey
- Excellent range of motion & pick resistance
- Tapered fit

### SIZING:

Women's: XS-4XL  
Girl's: GXS-GXL

### FABRICS:

Flex Stretch

## PREMIER STRAIGHT SKIRT

PRO **SELECT** CORE

CH-WSHO4-SEL

**\$40.00**

### DESCRIPTION

- Select level skirt
- Classic straight out that offers a clean and professional look

### SIZING:

Women's: XS-2XL  
Girl's: GXS-GXL

### FABRICS:

Flex Stretch



## PREMIER LONG SLEEVE CREW NECK

PRO **SELECT** CORE

CH-WLS01-SEL

**\$40.00**

### DESCRIPTION

- Select level long sleeve crew neck jersey
- Excellent range of motion & pick resistance
- Tapered fit

### SIZING:

Women's: XS-4XL  
Girl's: GXS-GXL

### FABRICS:

Flex Stretch



## PREMIER LONG SLEEVE V-NECK CROP TOP

PRO **SELECT** CORE

CH-WLS02-SEL

**\$40.00**

### DESCRIPTION

- Select level long sleeve crop top
- Crop profile offers a trendy, athletic look while ensuring full range of motion
- Classic v-neck design

### SIZING:

Women's: 2XS-4XL  
Girl's: GXS-GL

### FABRICS:

Flex Stretch



## PREMIER FLUTTER SKIRT

PRO **SELECT** CORE

CH-WSH03-SEL

**\$40.00**

### DESCRIPTION

- Select level skirt
- Flared silhouette that adds a touch of elegance

### SIZING:

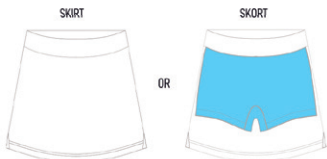
Women's: XS-4XL  
Girl's: GXS-GXL

### FABRICS:

Flex Stretch

10-15 business days standard production time from artwork approval plus shipping time ///

Free freight, no setup charges, no artwork fee



FLEXDRY  HIDDEN SHORT



NEW

# PREMIER SKORT

PRO **SELECT** CORE

LX-WSHO3-SEL

**\$45.00**

## DESCRIPTION

- Crafted from a high-quality medium weight Flexdry spandex
- Elastic waistband ensures a secure and comfortable fit

## SIZING:

Women's: XS-2XL  
Girl's: GXS-GXL

## FABRICS:

Flex Dry

# PREMIER BUTTERFLY SHORTS

PRO **SELECT** CORE

CH-WSHO2-SEL

**\$45.00**

## DESCRIPTION

- Select level short
- Butterfly profile provides a stylish look while offering maximum range of motion
- Loose fit leg design for comfort

## SIZING:

Women's: XS-4XL  
Girl's: GXS-GXL

## FABRICS:

Flexweave 1.4

# CHEER <sup>QT</sup> COMPRESSION SHORTS

PRO **SELECT** CORE



FF-WSHO2-SEL

**\$35.00**

## DESCRIPTION

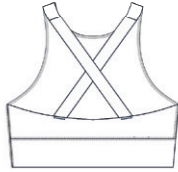
- Select level compression short
- Flex Stretch fabric
- Moisture wicking fabric for moisture management
- Accent flatlock stitching
- Men's feature extended length design
- Variable inseam

## SIZING:

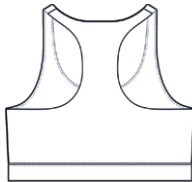
Women's: XS-4XL  
Girl's: GXS-GXL

## FABRICS:

Flex Stretch



BACK DETAIL



## HIGH NECK SPORTS BRA

PRO **SELECT** CORE

CH-WSLO1-SEL

**\$45.00**

### DESCRIPTION

- Select level bra top
- High neck design offers superior coverage and a contemporary athletic look
- Excellent range of motion and moisture management

### SIZING:

Women's: XS-4XL  
Girl's: GXS-GXL

### FABRICS:

Flex Stretch  
Dynalite

## LOW NECK SPORTS BRA

PRO **SELECT** CORE

CH-WSLO2-SEL

**\$40.00**

### DESCRIPTION

- Select level bra top
- Accentuates neckline and offers a stylish, confident look
- Excellent range of motion and moisture management

### SIZING:

Women's: XS-4XL  
Girl's: GXS-GXL

### FABRICS:

Flex Dry

## WOMEN'S CHEER WARM-UP JOGGER

PRO **SELECT** CORE

CH-WPO1-SEL

**\$55.00**

### DESCRIPTION

- Select level jogger
- Ribbed cuffs at the ankles for a secure fit

### SIZING:

Women's: XS-4XL  
Girl's: GXS-GXL

### FABRICS:

Flex Stretch

10-15 business days standard production time from artwork approval plus shipping time ///

Free freight, no setup charges, no artwork fee



## BASE LONG SLEEVE CREW NECK

PRO **SELECT** CORE

CH-MLSO1-SEL

**\$40.00**

### DESCRIPTION

- Select level long sleeve jersey
- Traditional crew neck profile
- Excellent durability and range of motion
- Excellent breathability

### SIZING:

Men's: S-5XL  
Youth: YXS-YXL

### FABRICS:

Flex Stretch

Crew Neck



V-Neck



## BASE SHORT SLEEVE SHIRT

PRO **SELECT** CORE

V-NECK - CH-MSSO2-SEL

**\$35.00**

CREW NECK - CH-MSSO1-SEL

**\$35.00**

### DESCRIPTION

- Select level short sleeve jersey
- Traditional v-neck or crew neck profiles
- Excellent durability and range of motion
- Excellent breathability

### SIZING:

Men's: S-5XL  
Youth: YXS-YXL

### FABRICS:

Flex Stretch



## MEN'S CHEER PANT

PRO **SELECT** CORE

CH-MPTO1-SEL

**\$55.00**

### DESCRIPTION

- Select level pant
- Traditional straight out pants made from heavyweight spandex fabric
- Elastic Waistband and drawstring closure

### SIZING:

Men's: S-4XL  
Youth: YXS-YXL

### FABRICS:

Flex Stretch



# CYCLING



## GRAND CYCLING JERSEY

PRO SELECT **CORE**

MEN'S - CY-MSS01-COR **\$45.00**

WOMEN'S - CY-WSS01-COR

### DESCRIPTION

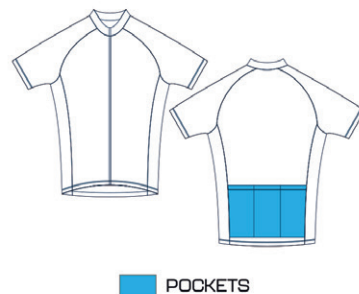
- Core level short sleeve, hidden zip jersey
- Micromesh fabric is lightweight, comfortable, and highly breathable
- 3 pocket back design
- Moisture wicking, anti-microbial, excellent UPF

### SIZING:

Men's: XS-5XL  
Youth: YXS-YXL  
Women's: XS-3XL

### FABRICS:

Dyna Dry



POCKETS



Full Zip



Back Pockets



## CRUISER LONG SLEEVE BIKE JERSEY

PRO **SELECT** CORE

CY-MLS05-SEL **\$50.00**

### DESCRIPTION

- Select level v-neck jersey
- Extended length tail
- Silicone anti-slip band around bottom, keeps shirt tucked
- Spandex mesh side inserts for comfort and breathability
- Moisture wicking, anti-microbial, excellent UPF

### SIZING:

Men's: S-5XL  
Youth: YXS-YXL

### FABRICS:

Dynalite  
Flex Mesh 2.0

Visit page 114 for more information on Fabrics /// Visit page 112 for information on fonts and colors



# SIDELINE



# ESSENTIALS. FAST. ON-TIME.



SHIPS 10 DAYS  
FROM APPROVAL



BULD  
ONLINE



ADD YOUR TEAM  
COLORS AND LOGO

## THE FABRICS



### DYNALITE

145 GSM / 100% Polyester



### DYNAPIN

180 GSM / 100% Polyester



### ULTRAFLEX

Front: 160 GSM / 15% Spandex  
Back: 160 GSM / 10% Spandex



Crew Neck



V-Neck



# QTCN <sup>QT</sup> SHORT SLEEVE

PRO **SELECT** CORE

**CREW NECK (DYNALITE)** \$30.00  
SF-MSS50-DYN

**V-NECK (DYNALITE)** \$30.00  
SF-MSS51-DYN

**+\$5.00 For Dynapin / +\$10.00 for Ultraflex**

\*\*For full list of SKUs see page 117

### DESCRIPTION

- Set-in short sleeves
- Drop tail design
- Neck taping
- Self material collar

### SIZING:

Men's: S-5XL  
Women's: S-3XL  
Youth: XS-XL

### FABRICS:

Dynalite (Core)  
Dynapin (Select)  
Ultraflex (Select+)

Crew Neck



V-Neck



# QTCN <sup>QT</sup> LONG SLEEVE

PRO **SELECT** CORE

**CREW NECK (DYNALITE)** \$32.00  
SF-MLS50-DYN

**V-NECK (DYNALITE)** \$32.00  
SF-MLS51-DYN

**+\$5.00 For Dynapin / +\$10.00 for Ultraflex**

\*\*For full list of SKUs see page 117

### DESCRIPTION

- Set-in long sleeves
- Drop tail design
- Neck taping
- Self material collar

### SIZING:

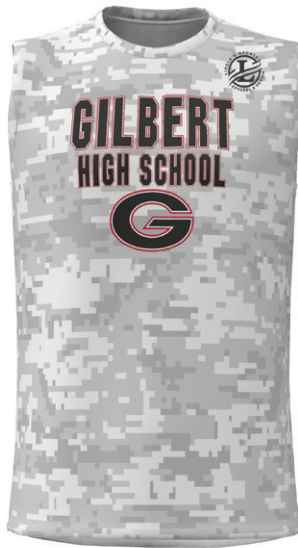
Men's: S-5XL  
Women's: S-3XL  
Youth: XS-XL

### FABRICS:

Dynalite (Core)  
Dynapin (Select)  
Ultraflex (Select+)

10-15 business days standard production time from artwork approval plus shipping time ///

**Free freight, no setup charges, no artwork fee**



# QTCN QT SLEEVELESS CREW NECK

PRO **SELECT** CORE

DYNALITE - SF-MSL50-DYN

**\$30.00**

**+\$5.00 For Dynapin / +\$10.00 for Ultraflex**

\*\*For full list of SKUs see page 117

DESCRIPTION	SIZING:	FABRICS:
• Sleeveless	Men's: S-5XL	Dynalite (Core)
• Drop tail design	Women's: S-3XL	Dynapin (Select)
• Neck taping	Youth: XS-XL	Ultraflex (Select+)
• Self material collar		

NEW



# QTVN QT SLEEVELESS RACERBACK V-NECK T-SHIRT

PRO **SELECT** CORE

DYNALITE - SF-WSL53-DYN

**\$30.00**

**+\$5.00 For Dynapin / +\$10.00 for Ultraflex**

\*\*For full list of SKUs see page 117

DESCRIPTION	SIZING:	FABRICS:
• Drop tail design	Women's: S-3XL	Dynalite (Core)
• Neck taping	Girl's: XS-XL	Dynapin (Select)
• Self material collar		Ultraflex (Select+)
• Racerback sleeveless design		



# QT QT SHORTS WITH & WITHOUT POCKETS

PRO **SELECT** CORE

NO POCKETS 7" INSEAM (DYNALITE)  
SF-MSH53-DYN7

**\$35.00**

W/ POCKETS 7" INSEAM (DYNALITE)  
SF-MSH54-DYN7

**\$35.00**

**+\$5.00 For Dynapin / +\$10.00 for Ultraflex**

\*\*For full list of SKUs see page 117

DESCRIPTION	SIZING:	FABRICS:
• Lace Drawcord	Men's: S-4XL	Dynalite (Core)
• Cover hemmed leg openings	Women's: S-3XL	Dynapin (Select)
• 5", 7" & 9" Men's, 3", 5" & 7" Women's inseams	Youth: XS-XL	Ultraflex (Select+)

\*Green highlights indicate "Most Popular" fabrics

Visit page 114 for more information on Fabrics /// Visit page 112 for information on fonts and colors



# QTHOOD <sup>QT</sup> SLEEVELESS HOODED T-SHIRT

PRO **SELECT** CORE

DYNALITE - SF-MSL52-DYN **\$35.00**

**+\$5.00 For Dynapin / +\$10.00 for Ultraflex**

\*\*For full list of SKUs see page 117

### DESCRIPTION

- Select & Core level hooded t-shirt
- Dynalite, Dynapin or Ultraflex flat knit front and stretch mesh back fabric options

### SIZING:

Men's: S-5XL  
Women's: S-3XL  
Youth: YXS-YXL

### FABRICS:

Dynalite (Core)  
Dynapin (Select)  
Ultraflex (Select+)



# QTHOOD <sup>QT</sup> SHORT SLEEVE HOODED T-SHIRT

PRO **SELECT** CORE

DYNALITE - SF-MSS52-DYN **\$37.00**

**+\$5.00 For Dynapin / +\$10.00 for Ultraflex**

\*\*For full list of SKUs see page 117

### DESCRIPTION

- Select & Core level hooded t-shirt
- Dynalite, Dynapin or Ultraflex flat knit front and stretch mesh back fabric options
- Set-in short sleeves

### SIZING:

Men's: S-5XL  
Women's: S-3XL  
Youth: YXS-YXL

### FABRICS:

Dynalite (Core)  
Dynapin (Select)  
Ultraflex (Select+)

**\*Green highlights indicate "Most Popular" fabrics**

10-15 business days standard production time from artwork approval plus shipping time ///

Free freight, no setup charges, no artwork fee



# QTHOOD

## LONG SLEEVE HOODED T-SHIRT

PRO **SELECT** CORE

DYNALITE - SF-MLS52-DYN **\$40.00**

**+\$5.00 For Dynapin / +\$10.00 for Ultraflex**

\*\*For full list of SKUs see page 117

### DESCRIPTION

- Select & Core level hooded t-shirt
- Dynalite, Dynapin or Ultraflex flat knit front and stretch mesh back fabric options
- Set-in long sleeves

### SIZING:

Men's: S-5XL  
 Women's: S-3XL  
 Youth: YXS-YXL

### FABRICS:

Dynalite (Core)  
 Dynapin (Select)  
 Ultraflex (Select+)



# TRADITIONAL PULLOVER HOODIE

PRO **SELECT** CORE

FLEX DURAFIBER  
 MEN'S - SF-MLS05-SEL **\$65.00**  
 WOMEN'S - SF-WLS05-SEL

PRIME FLEECE  
 MEN'S - SF-MLS06-SEL **\$60.00**  
 WOMEN'S - SF-WLS06-SEL

### DESCRIPTION

- Heavyweight Flex Durafiber or Prime Fleece
- Adjustable drawstring neck (Adult sizes only)
- Large center pocket
- Self-material cuffs & waist

### SIZING:

Men's: S-5XL  
 Youth: YXS-YXL  
 Women's: XS-4XL

### FABRICS:

Flex Durafiber  
 Prime Fleece





# COLLEGIATE WARM UP JACKET

PRO **SELECT** CORE

MEN'S - SF-MLS20-SEL **\$65.00**  
WOMEN'S - SF-WLS20-SEL

### DESCRIPTION

- Traditional full zip warm up jacket
- Zipper neck garage, side pockets & self-material cuffs
- Heavyweight fabric with outstanding durability and stretch.

### SIZING:

Men's: S-3XL  
Youth: YXS-YXL  
Women's: XS-3XL

### FABRICS:

Flex Durafiber



# COLLEGIATE WARM UP PANTS

PRO **SELECT** CORE

MEN'S - SF-MPT20-SEL **\$50.00**  
WOMEN'S - SF-WPT20-SEL

### DESCRIPTION

- Traditional styled warm up pant with pockets
- Heavyweight Flex Durafiber fabric with outstanding durability and stretch

### SIZING:

Men's: S-4XL  
Youth: YXS-YXL  
Women's: XS-3XL

### FABRICS:

Flex Durafiber



## ELITE WOVEN WARM UP JACKET

PRO **SELECT** CORE

MEN'S - SF-MLS22-SEL **\$70.00**  
WOMEN'S - SF-WLS22-SEL

### DESCRIPTION

- Traditional full zip warm up jacket
- Mesh liner for enhanced moisture management
- Zipper neck garage, side pockets & self-material cuffs
- Lightweight woven fabric with smooth finish
- Comfortable with full range of motion

### SIZING:

Men's: XS-3XL  
Women's: XS-2XL

### FABRICS:

Flexweave 1.9  
Feathermesh liner

## ELITE WOVEN WARM UP PANT

PRO **SELECT** CORE

MEN'S - SF-MPT21-SEL **\$60.00**  
WOMEN'S - SF-WPT21-SEL

### DESCRIPTION

- Traditional style warm up pant with pockets
- Flexweave lightweight woven fabric with smooth finish and excellent drape

### SIZING:

Men's: S-4XL  
Youth: YXS-YXL  
Women's: XS-3XL

### FABRICS:

Flexweave 1.9

Visit page 114 for more information on Fabrics /// Visit page 112 for information on fonts and colors



## WOMEN'S TAPERED JACKET

PRO **SELECT** CORE

LINED - SF-WLS25-SEL **\$70.00**  
 UNLINED - SF-WLS24-SEL **\$60.00**

### DESCRIPTION

- Sleek yoga inspired design
- Available with or without the mesh liner for enhanced moisture management
- Flattering tapered full zip design
- Flat lock stitching throughout
- Flex Durafiber fabric for comfort and style

### SIZING:

Women's: XS-3XL  
 Girl's: G2XS-GXL

### FABRICS:

Flex Durafiber  
 Feathermesh liner



## WOMEN'S LEGGINGS

PRO **SELECT** CORE

FULL LENGTH - SF-WPT25-SEL **\$40.00**  
 7/8 LENGTH - SF-WPT24-SEL

### DESCRIPTION

- Sleek yoga inspired design
- Constructed from pre-dyed black nylon
- Custom sublimation on side insert
- Flat lock stitching

### SIZING:

Women's: S-3XL  
 Girls: G2XS-GXL

### FABRICS:

Flex Compression 2.2  
 Nylon (Black)

10-15 business days standard production time from artwork approval plus shipping time ///

Free freight, no setup charges, no artwork fee



# SOFTSHELL JACKET

PRO **SELECT** CORE

## MESH LINER

MEN'S - SF-MLS30-SEL **\$80.00**  
WOMEN'S - SF-WLS30-SEL

## POLAR FLEECE LINER

MEN'S - SF-MLS31-SEL **\$85.00**  
WOMEN'S - SF-WLS31-SEL

### DESCRIPTION

- Select level classic bomber design
- Mesh or fleece liner for enhanced comfort
- Heavyweight Flex Softshell spandex woven wind and water resistant softshell fabric
- Full length zipper

### SIZING:

Men's: S-6XL  
Youth: YXS-YXL  
Women's: XS-4XL

### FABRICS:

Flex Softshell  
Feathermesh Liner  
Fleece Liner



**NEW**

# QUILTED LETTER JACKET

PRO **SELECT** CORE

MEN'S - SF-MLS32-SEL **\$90.00**

### DESCRIPTION

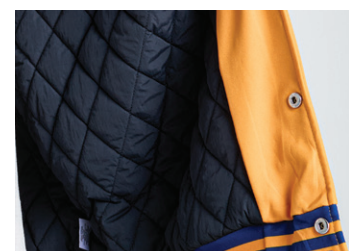
- Select level classic collegiate style jacket
- Quilted poly inner liner
- Heavyweight Flex Softshell spandex woven wind and water resistant

### SIZING:

Men's: S-8XL  
Youth: YXS-YXL

### FABRICS:

Flex Softshell  
Proflex  
Poly Liner



Liner Detail



NEW

## JD POLO SHIRT

PRO **SELECT** CORE

### SHORT SLEEVE

MEN'S - SF-MSS11-SEL  
WOMEN'S - SF-WSS11-SEL

**\$45.00**

### LONG SLEEVE

MEN'S - SF-MLS11-SEL  
WOMEN'S - SF-WLS11-SEL

**\$50.00**

### DESCRIPTION

- Traditional short or long sleeve 3-button polo
- 4-panel construction with overlook stitching
- Reinforced self-collar
- Modern lightweight fabric

### SIZING:

Men's: S-5XL  
Youth: YXS-YXL  
Women's: XS-4XL  
Girl's: GS-GL

### FABRICS:

ComfortFlex



NEW

## JD 1/4 ZIP

PRO **SELECT** CORE

### SHORT SLEEVE

MEN'S - SF-MSS10-SEL  
WOMEN'S - SF-WSS10-SEL

**\$45.00**

### LONG SLEEVE

MEN'S - SF-MLS10-SEL  
WOMEN'S - SF-WLS10-SEL

**\$55.00**

### DESCRIPTION

- Traditional long or short sleeve 1/4 zip pullover
- Self-material cuffs
- Raglan cut profile for enhanced comfort
- Modern lightweight fabric

### SIZING:

Men's: S-5XL  
Youth: YXS-YXL  
Women's: XS-4XL  
Girl's: GS-GL

### FABRICS:

ComfortFlex

10-15 business days standard production time from artwork approval plus shipping time ///

Free freight, no setup charges, no artwork fee



## FULL BUTTON SHORT SLEEVE DRESS SHIRT

PRO **SELECT** CORE

MEN'S - SF-MSS35-SEL  
WOMEN'S - SF-WSS35-SEL

\$50.00

### DESCRIPTION

- Select level short sleeve full button dress shirt
- 4-panel construction with elegant needle point stitching
- Reinforced self-collar
- 4-way stretch fabric for comfort and durability

### SIZING:

Men's: S-5XL  
Women's: XS-3XL  
Youth: YXS-YXL

### FABRICS:

Flexweave 1.4



## FULL BUTTON LONG SLEEVE DRESS SHIRT

PRO **SELECT** CORE

MEN'S - SF-MLS35-SEL  
WOMEN'S - SF-WLS35-SEL

\$60.00

### DESCRIPTION

- Select level long sleeve full button dress shirt
- 4-panel construction with elegant needle point stitching
- Reinforced self-collar
- 4-way stretch fabric for comfort and durability

### SIZING:

Men's: S-5XL  
Women's: XS-3XL  
Youth: YXS-YXL

### FABRICS:

Flexweave 1.4



NEW

## BASE COMPRESSION SHIRT

PRO **SELECT** CORE

### LONG SLEEVE

MEN'S - SF-MLS07-SEL

**\$45.00**

WOMEN'S - SF-WLS07-SEL

### SHORT SLEEVE

MEN'S - SF-MSS07-SEL

**\$40.00**

WOMEN'S - SF-WSS07-SEL

### SLEEVELESS

MEN'S - SF-MSL07-SE

**\$35.00**

### DESCRIPTION

- Modern 4-panel design and reinforced seams
- Compression spandex body
- Mesh back panel
- Accent flat lock stitching

### SIZING:

Men's: XS-4XL

Youth: YXS-YXL

Women's: SM-2XL

### FABRICS:

Flex Compression 2.2

Flex Aerofiber

**TO SEE PAST  
DESIGNS & CREATIONS  
VISIT OUR WEBSITE'S  
GALLERY**

[www.liddlesports.com/gallery](http://www.liddlesports.com/gallery)



# ACCESSORIES

# ARM SLEEVES (SOLD IN PAIRS)

PRO **SELECT** CORE

SF-UAC01-SEL

\$20.00

**DESCRIPTION**

- Benefits of increased circulation, warmth and UV protection
- Compression spandex, both stylish and functional
- Excellent moisture management
- Reinforced seams & tapered design
- Compression spandex - one size fits most

**SIZING:** Men's: S/M, L/XL  
Youth: YS/YM, YL/YXL

**FABRICS:** Flex Compression 2.2



NEW

# TABLE COVER

PRO **SELECT** CORE

6 FT - SF-UAC02-COR

\$110.00

8 FT - SF-UAC03-COR

\$125.00

**DESCRIPTION**

- 6 or 8 foot sublimated tablecloth
- Timekeeper/Scorer/Registration tables
- High stretch fabric for proper fit

**FABRICS:**

Dynalite

10-15 business days standard production time from artwork approval plus shipping time ///

Free freight, no setup charges, no artwork fee



## BLANKET

PRO SELECT **CORE**

50" x 60" - SF-UAC05-COR	\$55.00
60" x 80" - SF-UAC06-COR	\$85.00

### DESCRIPTION

- Multi-purpose sublimated blanket - games - outdoor functions
- Pro Knit 2.7 Interlock sublimated front with soft and cozy fleece back

### FABRICS:

Pro Knit 2.7  
Fleece Liner



## HEADBAND

PRO **SELECT** CORE

SF-UAC10-SEL	\$10.00
--------------	---------

### DESCRIPTION

- Compression spandex - one size fits most
- Soft and breathable
- Excellent moisture management
- Machine washable with UPF 50+

### SIZING:

Unisex

### FABRICS:

Flex Compression 2.2



# NECK GAITER

PRO **SELECT** CORE

SF-UAC20-SEL

\$10.00

## DESCRIPTION

- Covers nose, mouth, and chin
- Available in youth and adult sizes
- High stretch single layer spandex polyester
- Anti-microbial and moisture wicking
- Non-medical grade

## SIZING:

Unisex

## FABRICS:

Flex Compression 2.2



# BENCH TOWEL MICROFIBER TOWEL

PRO **SELECT** CORE

12" x 17" - SF-UTW81-PRO

\$14.00

17" x 25" - SF-UTW82-PRO

\$17.00

23" x 42" - SF-UTW83-PRO

\$25.00

35" x 60" - SF-UTW84-PRO

\$45.00

## DESCRIPTION

- An ultrasoft/ultra heavyweight microfiber towel
- Edge-to-Edge, full-color single sided sublimation with exceptional high-resolution imaging and vibrant coloring
- Antimicrobial and mold/mildew resistant

## FABRICS:

Microfiber Fleece

10-15 business days standard production time from artwork approval plus shipping time ///

Free freight, no setup charges, no artwork fee



## CHAIR WRAP & TOPPER

PRO **SELECT** CORE

CHAIR WRAP - SF-UAC26-SEL

\$17.00

CHAIR TOPPER - SF-UAC27-SEL

\$20.00

### DESCRIPTION

- Compression spandex - one size fits most
- Easy on-off for quick change
- Durable and vibrant
- Simple and effective promotion space
- Machine washable

### FABRICS:

Flex Compression 2.2



## DOOR WRAP

PRO **SELECT** CORE

SF-UAC30-SEL

\$60.00

### DESCRIPTION

- Stretch fabric door wrap
- Easy setup slip easily over most standard 80" doors
- Graphic is full-color dye sublimated on both sides of door
- Made with premium heavyweight 4-way stretch fabric
- 80" x 30"

### FABRICS:

Flex Durafiber



# BAGS



## PINNACLE DUFFLE BAG

PRO SELECT CORE

SMALL - SF-UBG80-PRO	\$55.00
MEDIUM - SF-UBG81-PRO	\$60.00
LARGE - SF-UBG82-PRO	\$65.00
XLARGE - SF-UBG85-PRO	\$70.00

### DESCRIPTION

- Made from military grade polyester
- #10 Zippers, metal buckles & rivets at key stress points
- Seatbelt grade webbing
- Interior fully lined
- Adjustable shoulder strap for comfort

### FABRICS:

Armortek 1680 D

### SIZING:

Small: 17" x 10" x 10"  
 Medium: 24" x 11" x 11"  
 Large: 28" x 11" x 11"  
 XLarge: 36" x 13" x 13"



## ALL BAGS ARE MADE WITH PREMIUM FABRIC & HARDWARE



1680 DENIER  
FABRIC



NO. 10  
ZIPPERS



RIVETED STRESS  
POINTS



# MULTI-SPORT BACKPACK

**PRO** SELECT CORE

SF-UBG83-PRO

**\$85.00**

## DESCRIPTION

- Made from military grade polyester
- #10 Zippers, metal buckles & rivets at key stress points
- Seatbelt grade webbing
- Traditional style backpack carrier
- Compartments for balls, bats, water bottles, cleats, and helmet

## SIZING:

18" x 13" x 9.5"

## FABRICS:

Armortek 1680 D



# STANDARD BACKPACK

**PRO** SELECT CORE

SF-UBG84-PRO

**\$60.00**

## DESCRIPTION

- Made from military grade polyester.
- #10 Zippers, metal buckles & rivets at key stress points.
- Seatbelt grade webbing

## SIZING:

18" x 12" x 9.5"

## FABRICS:

Armortek 1680 D

10-15 business days standard production time from artwork approval plus shipping time ///

Free freight, no setup charges, no artwork fee

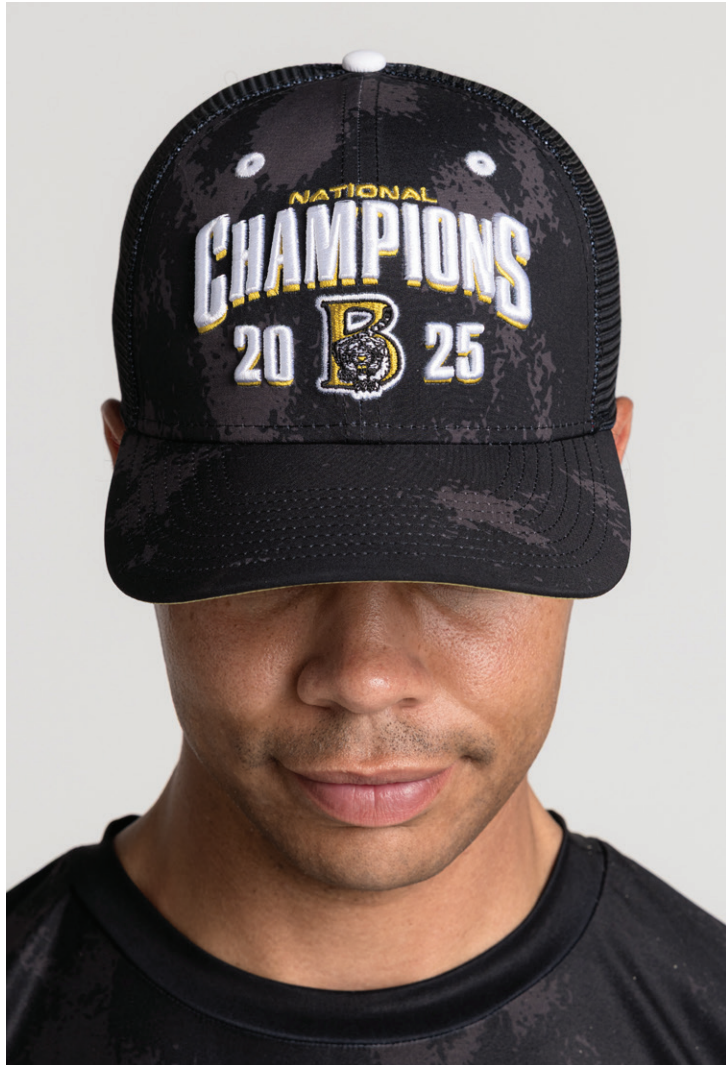
**NEW**

**FULLY SUBLIMATED**

# **CAPS & VISORS**

- 3D & 2D Embroidery
- Low Minimums
- Full Custom
- Stretch Fit & Snap Back
- Unisex & Adult/Youth Sizing
- Coordinate Designs & Match Colors To Your Uniforms





# PRO SERIES

**NEW**

## SNAPBACK TRUCKER MESH CAP

**PRO** **SELECT** **CORE**

---


CURVED BRIM SF-UHW82-PRO **\$28.00**

FLAT BRIM SF-UHW81-PRO

**DESCRIPTION**

- Includes 3D puff front logo
- Fully Sublimated
- Curved brim or flat brim & mid crown profile
- 12 piece minimum


**SIZING:** OSFM      **FABRICS:** Pro Stretch Mesh



FLAT BRIM



CURVED BRIM





NEW

## FLEXFIT CAP

PRO SELECT CORE

CURVED BRIM  
SF-UHW85-PRO

\$28.00

FLAT BRIM  
SF-UHW83-PRO

### DESCRIPTION

- Includes 3D puff front logo and 2D back logo
- Fully Sublimated
- Flat or Curved brim & mid crown profile
- 12 piece minimum / 6 piece minimum per size

### SIZING:

X-Small: 6 7/8"  
Small: 7 1/4"  
Medium: 7 1/2"  
Large: 7 5/8"  
X-Large: 8"

### FABRICS:

Pro Stretch



NEW

## VISOR

PRO SELECT CORE

SF-UHW84-PRO

\$25.00

### DESCRIPTION

- Includes 3D puff front logo
- Fully Sublimated
- Curved brim
- 12 piece minimum

### SIZING:

OSFM

### FABRICS:

Pro Stretch



# STANDARD FONTS

NF Agency  
 ABCDEFGHIJKLMNOPQRSTUVWXYZ  
 1234567890

NF Canard  
 ABCDEFGHIJKLMNOPQRSTUVWXYZ  
 1234567890

NF Blue Jay  
 ABCDEFGHIJKLMNOPQRSTUVWXYZ  
 1234567890

Game Time  
 ABCDEFGHIJKLMNOPQRSTUVWXYZ  
 1234567890

NF Disaster  
 ABCDEFGHIJKLMNOPQRSTUVWXYZ  
 1234567890

NF Grizzle  
 ABCDEFGHIJKLMNOPQRSTUVWXYZ  
 1234567890

NF Impact  
 ABCDEFGHIJKLMNOPQRSTUVWXYZ  
 1234567890

NF Sox  
 ABCDEFGHIJKLMNOPQRSTUVWXYZ  
 1234567890

NF Trojans  
 ABCDEFGHIJKLMNOPQRSTUVWXYZ  
 1234567890

NF Tiffany  
 ABCDEFGHIJKLMNOPQRSTUVWXYZ  
 1234567890

Nf Armorhide  
 ABCDEFGHIJKLMNOPQRSTUVWXYZ  
 1234567890

NF Banff Script  
 ABCDEFGHIJKLMNOPQRSTUVWXYZ  
 1234567890

Edge  
 ABCDEFGHIJKLMNOPQRSTUVWXYZ  
 1234567890

NF Captain  
 ABCDEFGHIJKLMNOPQRSTUVWXYZ  
 1234567890

NF Glades  
 ABCDEFGHIJKLMNOPQRSTUVWXYZ  
 1234567890

Hiite Block  
 ABCDEFGHIJKLMNOPQRSTUVWXYZ  
 1234567890

NF Machine  
 ABCDEFGHIJKLMNOPQRSTUVWXYZ  
 1234567890

Pro Block  
 ABCDEFGHIJKLMNOPQRSTUVWXYZ  
 1234567890

NF Motor  
 ABCDEFGHIJKLMNOPQRSTUVWXYZ  
 1234567890

NF Jaguar  
 ABCDEFGHIJKLMNOPQRSTUVWXYZ  
 1234567890

To the left is a list of a variety of fonts we offer. These fonts can be used for custom orders. For even more options, visit the builder and explore our extensive font collection to find the perfect match for your project.

ONE COLOR

NAME

10

TWO COLOR

NAME

10

THREE COLOR

NAME

10



# STOCK COLORS

Below is a list of our 55 stock sublimation colors, each meticulously formulated to meet the highest industry standards. We utilize the finest tools and resources to ensure our colors remain vibrant and rich, providing unmatched quality. Additionally, we offer expert color matching services to meet your specific needs, ensuring perfect consistency for all your projects. Trust us to deliver the most vivid and accurate colors every time.

BLACK 2.0	GRAPHITE 2.0	GREY 2.0	BASEBALL GREY 2.0	SILVER 2.0	WHITE 2.0	PEWTER 2.0
DARK BROWN 2.0	BROWN 2.0	TAUPE 2.0	DESERT 2.0	DARK VEGAS 2.0	VEGAS 2.0	SAND 2.0
NATURAL 2.0	MAROON 2.0	CARDINAL 2.0	PHOENIX RED 2.0	DARK RED 2.0	RED 2.0	NEON PINK 2.0
FUSCIA 2.0	PINK 2.0	BUBBLEGUM 2.0	RIBBON 2.0	NAVEL 2.0	NEON ORANGE 2.0	ORANGE 2.0
TEXAS ORANGE 2.0	NEON YELLOW 2.0	HIGHLIGHTER 2.0	YELLOW 2.0	GOLD 2.0	ATHLETIC ORANGE 2.0	TITAN 2.0
MOSS 2.0	OLIVE 2.0	NEON GREEN 2.0	LIME GREEN 2.0	KELLY 2.0	FOREST 2.0	DARK GREEN 2.0
LITE TEAL 2.0	TEAL 2.0	DARK TEAL 2.0	COLUMBIA BLUE 2.0	POWDER 2.0	NEON BLUE 2.0	LITE ROYAL 2.0
ROYAL 2.0	DARK ROYAL 2.0	NAVY 2.0	MIDNIGHT 2.0	DARK PURPLE 2.0	PURPLE 2.0	LAVENDER 2.0

## DISCLAIMER

When applying a gradient fade, it does not result in a simple two-color transition. An intermediary color will always appear where the two primary colors converge. This intermediate color may vary in the final print. Please note that using gradient fades excludes any possibility of warranties or returns related to the fade. The provided mock-up is for visual reference and is not to scale.

# FABRIC INFORMATION

We take immense pride in meticulously selecting the finest fabrics available in the industry, ensuring that every product we create meets the highest standards of quality and durability. Our commitment to excellence drives us to continuously innovate and develop, pushing the boundaries of design and functionality to bring our customers products that not only meet their needs but exceed their expectations.

**Our dedication to utilizing the best materials and adopting the latest technologies reflects our unwavering pursuit of perfection in every piece we craft.**



**DYNADRY**

**130 GSM / 100% POLYESTER**

A versatile, lightweight fabric offering exceptional air permeability without sacrificing moisture wicking capabilities.



**DYNALITE**

**145 GSM / 100% POLYESTER**

Traditional lightweight interlock fabric with excellent drape, sheen and durability. A great all around fabric.



**DYNAPIN**

**180 GSM / 100% POLYESTER**

A medium weight knit fabric that features ultra fine pinhole mesh construction. Great all around fabric with excellent breathability and drape.



**AIRMESH**

**190 GSM / 100% POLYESTER**

A mediumweight durable and versatile fabric used extensively in hockey and lacrosse products. Micro cell construction give high loft, durability and breath-ability.



**PROKNIT 2.7**

**270 GSM / 100% POLYESTER**

Heavyweight interlock with outstanding durability, limited stretch and reinforcing fibers for use in rugby shirts and baseball pants.



**FEATHER MESH**

**110 GSM / 100% POLYESTER**

Our lightweight 2-way mesh fabric is a durable and breathable traditional mesh design used in strategic high ventilation areas.



**PRIME FLEECE**

**250 GSM / 100% POLYESTER**

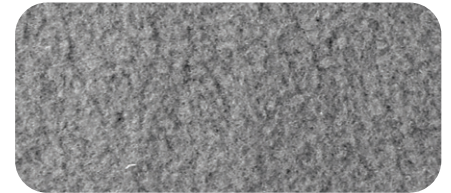
Heavyweight fleece with a traditional cotton look. Soft, warm and durable.



**WIFFLE MESH**

**160 GSM / 100% POLYESTER**

Lightweight high loft fabric with outstanding air transfer properties.



**FLEECE LINER**

**190 GSM / 100% POLYESTER**

Traditional lightweight interlock fabric with excellent drape, sheen and durability. A great all around fabric.



**NANOMESH**

**200 GSM / 100% POLYESTER**

Medium weight mock mesh fabric with excellent drape, sheen and breathability.



**DYNAMESH**

**200 GSM / 100% POLYESTER**

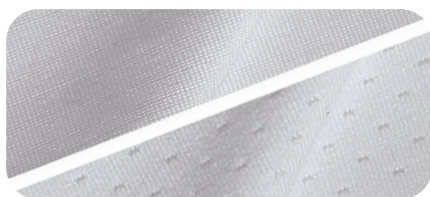
Traditional medium weight mesh fabric offering exceptional air permeability.



**HEX 16.5**

**165 GSM / 100% POLYESTER**

Modern lightweight fabric with outstanding drape, sheen and breathability. Subtle hex pattern in weave.



**ULTRAFLEX**

**FRONT: 160 GSM / 15% SPANDEX**  
**BACK: 160 GSM / 10% SPANDEX**

Flat knit front with pin dot mesh back - abrasion resistant, high-stretch & breathable



**AEROSPHERE**

**160 GSM / 100% POLYESTER**

A medium weight knit mock mesh fabric. Great all around fabric with excellent breath-ability and drape.



**DAZZLE**

**160 GSM / 100% POLYESTER**

Heavyweight fabric with brilliant shine. Used primarily in basketball.



**FLEX DURAFIBER**

**260 GSM / 10% SPANDEX**

Heavyweight fabric with outstanding durability and stretch. Used primarily in football.



**FLEX DRY**

**220 GSM / 12% SPANDEX**

Mediumweight high spandex content with smooth finish and incredible stretch. Used in garments that desire high stretch



**FLEX COMPRESSION 2.2**

**220 GSM / 14% SPANDEX**

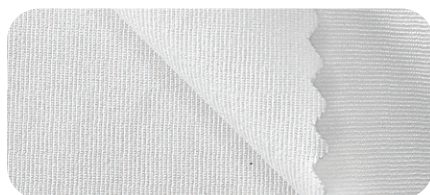
Mediumweight high spandex content with smooth finish and incredible stretch. Used for compression garments.



**PROFLEX MESH**

**280 GSM / 8% SPANDEX**

Heavyweight durable spandex with outstanding durability, stretch and breath-ability. Used primarily in football.



**FLEX STRETCH**

**270 GSM / 14% SPANDEX**

Heavyweight durable spandex with additional stretch. Used primarily in wrestling.



**FLEX MESH 2.0**

**200 GSM / 8% SPANDEX**

Medium weight fabric with pinhole mesh design for incredible stretch and breathability.



**FLEX AEROFIBER**

**225 GSM / 8% SPANDEX**

Medium weight durable spandex mesh with outstanding stretch & breath-ability. Used in wide variety of sports and apparel.



**PROFLEX**

**320 GSM / 12% SPANDEX**

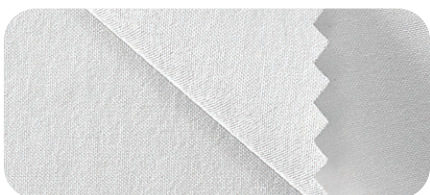
Ultra-heavyweight fabric with outstanding durability and stretch. Used primarily in football.



**FLEX SOFTSHELL**

**290 GSM / 6% SPANDEX**

Heavyweight multi-layer bonded fabric with 4-way stretch, outstanding wind and water resistance.



**FLEXWEAVE 1.4**

**140 GSM / 6% SPANDEX**

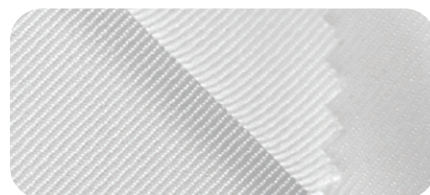
Lightweight 4-way stretch woven fabric with smooth finish and excellent drape. Woven fabrics offer outstanding durability and pick resistance.



**FLEXWEAVE 1.9**

**190 GSM / 6% SPANDEX**

Medium weight 4-way stretch woven fabric with smooth finish and excellent drape. Woven fabrics offer outstanding durability and pick resistance.



**CALICO 2.2**

**220 GSM / 100% POLYESTER**

Medium weight ultra strong, low stretch twill fabric. Features outstanding durability.

# HOW TO ORDER

CONTACT ONE OF OUR SALES REPS FROM OUR WEBSITE  
[www.liddlesports.com/contact](http://www.liddlesports.com/contact)

OUR SALES REPS WILL BE YOUR 1 POINT OF CONTACT. THEY WILL:

**1. HELP YOU CHOOSE THE PERFECT STYLE**

**2. CREATE A PROOF OF THE EXACT DESIGN YOU ARE WANTING**

**3. TAKE YOUR ORDER INCLUDING SIZES, NAMES, NUMBERS, ETC.**

**4. PROVIDE YOU A QUOTE AND INVOICE FOR PAYMENT**

**5. DELIVER YOUR PRODUCT WHEN COMPLETE**

1

## TRIPLE PLAY S/S FULL BUTTON JERSEY

PRO **SELECT** CORE

SELECT - BA-MSS02-SEL \$60.00  
 CORE - BA-MSS02-COR \$55.00

### DESCRIPTION

- Select or Core level short sleeve jersey
- Traditional full button profile
- Scoop hemmed bottom
- Excellent durability and range of motion
- Excellent breathability

### SIZING:

Men's: S-5XL  
 Youth: YXS-YXL

### FABRICS:

Flex Aerofiber (Select)  
 Dynapin (Core)

4/5



# 10 DAY PROGRAM



See below all of our SKUs that are available as a standard 10-Day production time from submittal / approval.

BASICS					
DESCRIPTION	GENDER	LEVEL	SKU	MSRP	
<b>MEN'S T-SHIRTS</b>					
QTCN Sleeveless Crew Neck T-Shirt - Dynalite	Mens, Youth	Core	SF-MSL50-DYN	\$30.00	
QTCN Sleeveless Crew Neck T-Shirt - Dynapin	Mens, Youth	Select	SF-MSL50-PIN	\$35.00	
QTCN Sleeveless Crew Neck T-Shirt - Ultraflex	Mens, Youth	Select+	SF-MCL50-ULT	\$40.00	
QTCN Short Sleeve Crew Neck T-Shirt - Dynalite	Mens, Youth	Core	SF-MSS50-DYN	\$30.00	
QTCN Short Sleeve Crew Neck T-Shirt - Dynapin	Mens, Youth	Select	SF-MSS50-PIN	\$35.00	
QTCN Short Sleeve Crew Neck T-Shirt - Ultraflex	Mens, Youth	Select+	SF-MSS50-ULT	\$40.00	
QTVN Short Sleeve V-Neck T-Shirt - Dynalite	Mens, Youth	Core	SF-MSS51-DYN	\$30.00	
QTVN Short Sleeve V-Neck T-Shirt - Dynapin	Mens, Youth	Select	SF-MSS51-PIN	\$35.00	
QTVN Short Sleeve V-Neck T-Shirt - Ultraflex	Mens, Youth	Select+	SF-MSS51-ULT	\$40.00	
QTCN Long Sleeve Crew Neck T-Shirt - Dynalite	Mens, Youth	Core	SF-MLS50-DYN	\$32.00	
QTCN Long Sleeve Crew Neck T-Shirt - Dynapin	Mens, Youth	Select	SF-MLS50-PIN	\$37.00	
QTCN Long Sleeve Crew Neck T-Shirt - Ultraflex	Mens, Youth	Select+	SF-MLS50-ULT	\$42.00	
QTVN Long Sleeve V-Neck T-Shirt - Dynalite	Mens, Youth	Core	SF-MLS51-DYN	\$32.00	
QTVN Long Sleeve V-Neck T-Shirt - Dynapin	Mens, Youth	Select	SF-MLS51-PIN	\$37.00	
QTVN Long Sleeve V-Neck T-Shirt - Ultraflex	Mens, Youth	Select+	SF-MLS51-ULT	\$42.00	
QTHOOD Hooded T-Shirt Sleeveless - Dynalite	Mens, Youth	Core	SF-MSL52-DYN	\$35.00	
QTHOOD Hooded T-Shirt Sleeveless - Dynapin	Mens, Youth	Select	SF-MSL52-PIN	\$40.00	
QTHOOD Hooded T-Shirt Sleeveless - Ultraflex	Mens, Youth	Select+	SF-MSL52-ULT	\$45.00	
QTHOOD Hooded T-Shirt Short Sleeve - Dynalite	Mens, Youth	Core	SF-MSS52-DYN	\$37.00	
QTHOOD Hooded T-Shirt Short Sleeve - Dynapin	Mens, Youth	Select	SF-MSS52-PIN	\$42.00	
QTHOOD Hooded T-Shirt Short Sleeve - Ultraflex	Mens, Youth	Select+	SF-MSS52-ULT	\$47.00	
QTHOOD Hooded T-Shirt Long Sleeve - Dynalite	Mens, Youth	Core	SF-MLS52-DYN	\$40.00	
QTHOOD Hooded T-Shirt Long Sleeve - Dynapin	Mens, Youth	Select	SF-MLS52-PIN	\$45.00	
QTHOOD Hooded T-Shirt Long Sleeve - Ultraflex	Mens, Youth	Select+	SF-MLS52-ULT	\$50.00	
<b>MEN'S SHORTS</b>					
QT No Pocket Shorts - Dynalite - 5"	Mens, Youth	Core	SF-MSH55-DYN5	\$35.00	
QT No Pocket Shorts - Dynalite - 7"	Mens, Youth	Core	SF-MSH53-DYN7	\$35.00	
QT No Pocket Shorts - Dynalite - 9"	Mens	Core	SF-MSH51-DYN9	\$35.00	
QT No Pocket Shorts - Dynapin - 5"	Mens, Youth	Select	SF-MSH55-PIN5	\$40.00	
QT No Pocket Shorts - Dynapin - 7"	Mens, Youth	Select	SF-MSH53-PIN7	\$40.00	
QT No Pocket Shorts - Dynapin - 9"	Mens	Select	SF-MSH51-PIN9	\$40.00	
QT No Pocket Shorts - Ultraflex - 5"	Mens, Youth	Select+	SF-MSH55-ULT5	\$45.00	
QT No Pocket Shorts - Ultraflex - 7"	Mens, Youth	Select+	SF-MSH53-ULT7	\$45.00	
QT No Pocket Shorts - Ultraflex - 9"	Mens	Select+	SF-MSH51-ULT9	\$45.00	
QT W/ Pocket Shorts - Dynalite - 5"	Mens, Youth	Core	SF-MSH56-DYN5	\$35.00	
QT W/ Pocket Shorts - Dynalite - 7"	Mens, Youth	Core	SF-MSH54-DYN7	\$35.00	
QT W/ Pocket Shorts - Dynalite - 9"	Mens	Core	SF-MSH52-DYN9	\$35.00	
QT W/ Pocket Shorts - Dynapin - 5"	Mens, Youth	Select	SF-MSH56-PIN5	\$40.00	
QT W/ Pocket Shorts - Dynapin - 7"	Mens, Youth	Select	SF-MSH54-PIN7	\$40.00	
QT W/ Pocket Shorts - Dynapin - 9"	Mens	Select	SF-MSH52-PIN9	\$40.00	
QT W/ Pocket Shorts - Ultraflex - 5"	Mens, Youth	Select+	SF-MSH56-ULT5	\$45.00	
QT W/ Pocket Shorts - Ultraflex - 7"	Mens, Youth	Select+	SF-MSH54-ULT7	\$45.00	
QT W/ Pocket Shorts - Ultraflex - 9"	Mens	Select+	SF-MSH52-ULT9	\$45.00	
<b>WOMEN'S T-SHIRTS</b>					
QTCN Sleeveless Crew Neck T-Shirt - Dynalite	Womens	Core	SF-WSL50-DYN	\$30.00	



10 DAY PROGRAM



QTCN Sleeveless Crew Neck T-Shirt - Dynapin	Womens	Select	SF-WSL50-PIN	\$35.00
QTCN Sleeveless Crew Neck T-Shirt - Ultraflex	Womens	Select+	SF-WSL50-ULT	\$40.00
QTVN Sleeveless Racerback V-Neck T-Shirt - Dyalite	Womens, Girls	Core	SF-WSL53-DYN	\$30.00
QTVN Sleeveless Racerback V-Neck T-Shirt - Dynapin	Womens, Girls	Select	SF-WSL53-PIN	\$35.00
QTVN Sleeveless Racerback V-Neck T-Shirt - Ultraflex	Womens, Girls	Select+	SF-WSL53-ULT	\$40.00
QTCN Short Sleeve Crew Neck T-Shirt - Dyalite	Womens	Core	SF-WSS50-DYN	\$30.00
QTCN Short Sleeve Crew Neck T-Shirt - Dynapin	Womens	Select	SF-WSS50-PIN	\$35.00
QTCN Short Sleeve Crew Neck T-Shirt - Ultraflex	Womens	Select+	SF-WSS50-ULT	\$40.00
QTVN Short Sleeve V-Neck T-Shirt - Dyalite	Womens	Core	SF-WSS51-DYN	\$30.00
QTVN Short Sleeve V-Neck T-Shirt - Dynapin	Womens	Select	SF-WSS51-PIN	\$35.00
QTVN Short Sleeve V-Neck T-Shirt - Ultraflex	Womens	Select+	SF-WSS51-ULT	\$40.00
QTCN Long Sleeve Crew Neck T-Shirt - Dyalite	Womens	Core	SF-WLS50-DYN	\$32.00
QTCN Long Sleeve Crew Neck T-Shirt - Dynapin	Womens	Select	SF-WLS50-PIN	\$37.00
QTCN Long Sleeve Crew Neck T-Shirt - Ultraflex	Womens	Select+	SF-WLS50-ULT	\$42.00
QTVN Long Sleeve V-Neck T-Shirt - Dyalite	Womens	Core	SF-WLS51-DYN	\$32.00
QTVN Long Sleeve V-Neck T-Shirt - Dynapin	Womens	Select	SF-WLS51-PIN	\$37.00
QTVN Long Sleeve V-Neck T-Shirt - Ultraflex	Womens	Womens	SF-WLS51-ULT	\$42.00
QTHOOD Hooded T-Shirt Sleeveless - Dyalite	Womens	Core	SF-WSL52-DYN	\$35.00
QTHOOD Hooded T-Shirt Sleeveless - Dynapin	Womens	Select	SF-WSL52-PIN	\$40.00
QTHOOD Hooded T-Shirt Sleeveless - Ultraflex	Womens	Select+	SF-WSL52-ULT	\$45.00
QTHOOD Hooded T-Shirt Short Sleeve - Dyalite	Womens	Core	SF-WSS52-DYN	\$37.00
QTHOOD Hooded T-Shirt Short Sleeve - Dynapin	Womens	Select	SF-WSS52-PIN	\$42.00
QTHOOD Hooded T-Shirt Short Sleeve - Ultraflex	Womens	Select+	SF-WSS52-ULT	\$47.00
QTHOOD Hooded T-Shirt Long Sleeve - Dyalite	Womens	Core	SF-WLS52-DYN	\$40.00
QTHOOD Hooded T-Shirt Long Sleeve - Dynapin	Womens	Select	SF-WLS52-PIN	\$45.00
QTHOOD Hooded T-Shirt Long Sleeve - Ultraflex	Womens	Select+	SF-WLS52-ULT	\$50.00
<b>WOMEN'S SHORTS</b>				
QT No Pocket Shorts - Dyalite - 3"	Womens	Core	SF-WSH55-DYN3	\$35.00
QT No Pocket Shorts - Dyalite - 5"	Womens	Core	SF-WSH53-DYN5	\$35.00
QT No Pocket Shorts - Dyalite - 7"	Womens	Core	SF-WSH51-DYN7	\$35.00
QT No Pocket Shorts - Dynapin - 3"	Womens	Select	SF-WSH55-PIN3	\$40.00
QT No Pocket Shorts - Dynapin - 5"	Womens	Select	SF-WSH53-PIN5	\$40.00
QT No Pocket Shorts - Dynapin - 7"	Womens	Select	SF-WSH51-PIN7	\$40.00
QT No Pocket Shorts - Ultraflex - 3"	Womens	Select+	SF-WSH55-ULT3	\$45.00
QT No Pocket Shorts - Ultraflex - 5"	Womens	Select+	SF-WSH53-ULT5	\$45.00
QT No Pocket Shorts - Ultraflex - 7"	Womens	Select+	SF-WSH51-ULT7	\$45.00
QT W/ Pocket Shorts - Dyalite - 3"	Womens	Core	SF-WSH56-DYN3	\$35.00
QT W/ Pocket Shorts - Dyalite - 5"	Womens	Core	SF-WSH54-DYN5	\$35.00
QT W/ Pocket Shorts - Dyalite - 7"	Womens	Core	SF-WSH52-DYN7	\$35.00
QT W/ Pocket Shorts - Dynapin - 3"	Womens	Select	SF-WSH56-PIN3	\$40.00
QT W/ Pocket Shorts - Dynapin - 5"	Womens	Select	SF-WSH54-PIN5	\$40.00
QT W/ Pocket Shorts - Dynapin - 7"	Womens	Select	SF-WSH52-PIN7	\$40.00
QT W/ Pocket Shorts - Ultraflex - 3"	Womens	Select+	SF-WSH56-ULT3	\$45.00
QT W/ Pocket Shorts - Ultraflex - 5"	Womens	Select+	SF-WSH54-ULT5	\$45.00
QT W/ Pocket Shorts - Ultraflex - 7"	Womens	Select+	SF-WSH52-ULT7	\$45.00

**BASKETBALL**

DESCRIPTION	GENDER	LEVEL	SKU	MSRP
<b>MENS</b>				



# 10 DAY PROGRAM



Steal Crew Neck Jersey	Mens, Boys	Core	BB-MSL11-COR	\$40.00
Free Throw V-Neck Jersey	Mens, Boys	Core	BB-MSL12-COR	\$40.00
Double Take Reversible Jersey	Mens, Boys	Core	BB-MSL05-COR	\$40.00
Double Take Reversible Shorts - 5"	Mens, Boys	Core	BB-MSH05-COR5	\$40.00
Double Take Reversible Shorts - 7"	Mens, Boys	Core	BB-MSH05-COR7	\$40.00
Double Take Reversible Shorts - 9"	Mens	Core	BB-MSH05-COR9	\$40.00

## WOMENS

Steal Crew Neck Jersey	Womens, Girls	Core	BB-WSL11-COR	\$40.00
Free Throw V-Neck Jersey	Womens, Girls	Core	BB-WSL12-COR	\$40.00
Double Take Reversible Jersey	Womens, Girls	Core	BB-WSL05-COR	\$40.00
Double Take Reversible Shorts - 5"	Womens, Girls	Core	BB-WSH05-COR5	\$40.00
Double Take Reversible Shorts - 7"	Womens, Girls	Core	BB-WSH05-COR7	\$40.00

## FLAG FOOTBALL

DESCRIPTION	GENDER	LEVEL	SKU	MSRP
-------------	--------	-------	-----	------

### MENS

Woven Field Shorts - No Pocket - 5"	Mens, Boys	Select	FF-MSH04-SEL5	\$35.00
Woven Field Shorts - No Pocket - 8"	Mens, Boys	Select	FF-MSH01-SEL8	\$35.00
Compression Shorts	Mens, Boys	Select	FF-MSH02-SEL	\$40.00

### WOMENS

Woven Field Shorts - No Pocket	Womens, Girls	Select	FF-WSH01-SEL	\$35.00
Compression Shorts	Womens, Girls	Select	FF-WSH02-SEL	\$40.00

## LACROSSE

DESCRIPTION	GENDER	LEVEL	SKU	MSRP
-------------	--------	-------	-----	------

### MENS

Braveheart 2-Ply Reversible Lacrosse Vest	Mens, Youth	Core	LX-MSL08-COR	\$40.00
---	-------------	------	--------------	---------

### WOMENS

Braveheart 2-Ply Reversible Racerback Lacrosse Vest	Womens, Girls	Core	LX-WSL08-COR	\$40.00
---	---------------	------	--------------	---------

## TRACK & FIELD

DESCRIPTION	GENDER	LEVEL	SKU	MSRP
-------------	--------	-------	-----	------

### MENS

Dash Track Short	Mens, Youth	Select	TK-MSH02-SEL2	\$35.00
Relay Running Singlet	Mens, Youth	Core	TK-MSH01-COR	\$25.00
Trek Compression Shorts	Mens, Boys	Select	FF-MSH02-SEL	\$40.00

### WOMENS

Dash Track Short	Womens, Girls	Select	TK-WSH02-SEL2	\$35.00
Relay Running Singlet	Womens, Girls	Core	TK-WSH01-COR	\$25.00
Trek Compression Shorts	Womens, Girls	Select	FF-WSH02-SEL	\$40.00

## VOLLEYBALL

DESCRIPTION	GENDER	LEVEL	SKU	MSRP
-------------	--------	-------	-----	------

### WOMENS

Hybrid Volleyball Short	Womens, Girls	Select	VB-WSH02-SEL3	\$35.00
Hybrid Volleyball Short - Long	Womens, Girls	Select	VB-WSH02-SEL7	\$40.00
Dominate Volleyball Short	Womens, Girls	Select	VB-WSH01-SEL3	\$35.00
Dominate Volleyball Short - Long	Womens, Girls	Select	VB-WSH01-SEL7	\$40.00





# HERITAGE. SPEED. DEPENDABILITY.



[sales@liddlesports.com](mailto:sales@liddlesports.com)  
816-944-4111

With decades of experience, we've simplified the uniform process from start to finish-so coaches, athletes, and dealer can focus on the game, not the gear. **We believe in getting it right, getting it there fast, and making the entire process as smooth as possible.** No guesswork. No missed deadlines, just easy, reliable, highest quality uniforms & teamwear that shows up on time-every time.

[www.liddlesports.com](http://www.liddlesports.com)