



Killarney Community Collaboration

Newsletter

Connecting • Strengthening Our Community • Supporting

June - August 2026

Stronger Together. Better Together.

Community Collaboration

About the Killarney Community Collaboration Group

The Killarney Community Collaboration Group is a growing partnership of local organisations, businesses, volunteers, services, and community members working together to strengthen connection, communication, and community wellbeing across Killarney and the surrounding district.

The group was established to create stronger collaboration between community organisations, improve the sharing of information, and support a more connected and inclusive community. By bringing people together regularly, the Collaboration Group aims to reduce duplication, encourage shared planning, and improve awareness of the many activities, services, and events taking place locally.

A key focus of the group is ensuring community members of all ages and backgrounds – including older residents, carers, families, and vulnerable community members – feel connected, supported, and able to participate fully in community life. The group also works collaboratively to minimise clashes between local events and encourage greater participation across the district.

The Killarney Community Collaboration Group has already supported a range of community initiatives, including the Killarney and District Community Connections Expo, which brought together local groups, services, emergency organisations, businesses, and volunteers to showcase what is available within the region and strengthen local resilience and connection.

Looking ahead, the group plans to continue building stronger communication pathways across the community through shared promotion opportunities, newsletters, social media collaboration, online updates, and improved access to local information. Members are passionate about supporting a vibrant, welcoming, and connected Killarney where organisations work together to strengthen outcomes for the whole community.

K-Life – you don't need to go out of town to access quality wellness and health services.

We provide the people, tools and services needed for our community to remain healthy, connected, fit and active so we can all live our best lives.



Medical Centre – 4664 4144

- GPs
- Skin Clinic
- Women's Health
- Pre and Postnatal care
- Health Care Plans
- Dietician, Exercise Physiologist, Psychologist



Aged Care – 4664 1488

- Residential Aged Care
- Respite Care



Community Services – 4664 1346

- Home Care
- Meals on Wheels
- Community Men's Shed
- Scenic Gem Home Cleaning and Maintenance Services



Community Housing

We have a number of self-contained, supported living dwellings.



NDIS Provider

K-Life is a registered NDIS provider. Talk with us about how we can help you achieve the life you want to live.



**We are owned by local for locals –
come and get involved!**



Sign up to become a member of K-Life – it's only \$10 per year



Subscribe to our monthly Newsletter



Volunteer



Make a donation, annuity or bequest



Visit our website – klife.org.au or enquire via



07 4884 1488



admin@klife.org.au



klife.org.au




K-Life Community Team Update

K-Life is pleased to welcome Anne-Maree to our Community Care team. Anne-Maree has joined us as a part-time Registered Nurse and brings valuable experience, compassion and commitment to supporting older members of our community. We are very excited to have her join the team and know many community members and clients will meet Anne-Maree over the coming months.

The Help Starts Here campaign continues to support local community members who may be feeling overwhelmed, unsure where to start, or needing help navigating services and supports. Sometimes people don't know who to call, how to access support, or simply need someone to point them in the right direction. Through this initiative, K-Life can assist community members one-on-one and help connect them with the right local services and supports.

We also encourage everyone to keep an eye out for neighbours, friends or community members who may be struggling or becoming isolated. A simple conversation or offer of support can make a significant difference. If you, or someone you know, may need assistance, please don't hesitate to get in touch with the K-Life team.

As the colder months arrive, K-Life is also encouraging community members to take extra care of their health and wellbeing during winter. Colds, flu and other respiratory viruses are more common during this time of year, particularly for older adults and those with underlying health conditions. Staying warm, maintaining good hand hygiene, staying connected, eating well and keeping up to date with vaccinations can all help reduce the risk of illness this winter. If you are unsure about your flu vaccination or would like to discuss your health needs, please speak with your GP or healthcare provider.

Thank you to everyone who continues to support and strengthen our wonderful community. Stay connected, look after one another, and we hope to see you at upcoming local events 



DEMENTIA SUPPORT GROUP



We offer a safe and supportive space for anyone in our community to connect with others who understand what you're going through.

Our group provides a platform to share experiences, learn from each other, and gain valuable resources and information to help you navigate your journey.

Come join us and find comfort in knowing you're not alone.



WHERE:

K-Life Cedar Room
7 Eucalyptus St
Killarney



TIME:

10:00am



Morning Tea Provided

2026 DATES

JUNE 2026



INFORMAL COFFEE MORNING

Casual chat and social respite over tea and coffee.

JULY 2026



GUEST SPEAKER – TRACI MCKENDRY

Traci, our palliative care champion will join the group for an informal chat.

AUGUST 2026



INFORMAL COFFEE MORNING

Casual chat and social respite over tea and coffee.



Register your interest or for more information



07 4664 1488



Supporting, connecting and understanding together.

Community Book Exchange

Have you visited the Community Book exchange recently? We now have well over 3,000 great quality items available to borrow, including books, DVDs and puzzles! Donations are welcome and we thank the wonderful community volunteers for keeping the exchange tidy and organised. All welcome!



Monday - Friday 8am-5pm

Saturday - 8am-11.30am

closed public holidays



This service is provided free of charge by Killarney Co-op to service the needs of the community



Help Starts Here

Helping Locals Live Life Better

*Help when you need it, where you
need it – starting with us*



Home care



NDIS



Cleaning, Gardening



Connections & wellbeing



Navigating complex issues



Call us on

07 4664 1248

Email

care@klife.org.au

KILLARNEY COMMUNITY GARDENS

A COMMUNITY SPACE
FOR EVERYONE
TO GROW

OUR VALUES



SUSTAINABILITY

Caring for our environment
for a healthier future.



COMMUNITY

Building connections
and supporting
one another.



COLLABORATION

Working together
to share ideas,
skills and resources.



LEARNING

Growing our knowledge
and inspiring
one another.

MEETING TIMES

At the gardens

MARCH TO AUGUST | 8am to 12 noon

SEPTEMBER TO FEBRUARY | 7am to 11am

Saturday mornings

WHERE TO FIND US



*At the gardens
on the corner of*

**IVY AND
WILLOW STREET**

New members / visitors welcome!

Whether you're an experienced gardener
or just starting out, there's a place for you here. ♥



GET IN TOUCH



killarneycommunitygardens@gmail.com



killarneycommunitygardens.wordpress.com

Scan to
learn more!



PROUDLY SUPPORTED BY

 Darling Downs Bank



JOIN US AT



Killarney MARKETS

Sunday 21st June

Sunday 19th July

Sunday 16th August

8am – 12 noon

Canning Park

Killarney



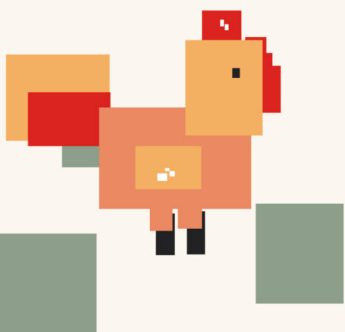
BRIC-A-BRAC
FRUIT & VEGES
JEWELLERY
PLANTS CRAFTS



SNACKS
CANDLES
SKIN CARE
COFFEE VAN
COLLECTABLES



FOR BOOKINGS CALL
SANDY 0427719826



K-Life Auxiliary

WELCOMING NEW MEMBERS



K-Life Auxiliary consists of volunteers who assist the residents of K-Life Residential. Our support includes raising funds to purchase equipment and resources that assist care teams to improve residents' lives.

Our members enjoy the camaraderie of our monthly meetings. Meetings provide our members with up-to-date information on the monthly events and key projects shaping K-Park.



If you are interested in becoming a member and have a couple of hours to spare every month, we meet on the **1st Friday of every month** in the Cedar Room at K-Life Residential, access via Eucalyptus St Car Park.

Annual membership is \$5.00.



Volunteering is a wonderful way to become actively involved within the community and make some new friends.

WE ♥ VOLUNTEERS!



For more information, please call
Margaret on 0481 462 903 or Alicia on 0427 633 486

KILLARNEY

Girls Brigade



SEEK, SERVE & FOLLOW CHRIST



WE MEET

Each Thursday night, during school terms.



TIME

5pm to 7pm



WHERE

Uniting Church Hall, Eucalyptus Street, Killarney



WHO

Open to all girls from Prep to Yr 12

Girls Brigade is a worldwide Christian organisation. For 62 years we have been part of the Killarney community through the Uniting Church.

We have fun while learning valuable life skills, making friends and growing in faith. Activities include cooking, games, camping, crafts, singing, sleepovers, skip rope and more!

 *New girls are always welcome!* 

We're also looking for volunteers – even a couple of hours a week can make a big difference. Leaders enjoy Brigade as much as the girls!



Captain Wendy
0418 888 294



Leader Helen
0428 647 168



Leader Kerry
0402 913 873



Community

K-LIFE MEN'S SHED

— *Get Involved!* —

The K-Life Men's Shed is busy supporting our community in practical and fun ways.



KINDLING FOR SALE

Support the Men's Shed

Stock up on kindling and help support the K-Life Men's Shed.

- 2.5kg bag – \$5
- 5kg bag – \$10



EASY TO PURCHASE

- Message us via the K-Life Men's Shed Facebook page, or
- Call Glenn 0429 375 022 or Bernie 0403 909 240.



All proceeds go back into community projects.



RECYCLING FOR GOOD

We collect recyclable cans and bottles at drop-off points across town:

- Men's Shed
- Showgrounds
- Senior Citizens Hall
- Queen Mary Falls Café



DONATIONS WELCOME

We're always grateful for donations of timber and tools to keep our projects running.



COME SAY HELLO

The Men's Shed is more than just a workshop. It's a place to contribute, share skills, and make friends over a cuppa and biscuits.



WHEN:

Mondays & Fridays,
9am–12pm



WHERE:

Acacia Street, next to
the Anglican Church



PHONE:

07 4664 1403



Everyone is welcome

Drop in, meet the crew, and see what K-Life Men's Shed is all about.

Killarney

Country Quilters and Craft Group

Supporting local and numerous external charities



Meet 2nd and 4th
Tuesdays of the month



at the Anglican Church,
Acacia Street,
Killarney (opposite the
Killarney School)



from
8.30 – 11.30 am



We welcome
new members
and new craft ideas.



Contact

Christa 0414 565 327
or Carolyn 0429 662 227



HELP US

Drive to Care

\$78,000



We're raising **\$78,000** for a Community Health Outreach Vehicle – bringing essential medical and wellness support to more people, wherever they live.



Bringing healthcare home.



Scan to donate or learn more.
klife.org.au/drive-to-care



KILLARNEY QCWA

Welcomes new members

Contact President Gloria Anderson
for more information
0746641203

Meeting times

2nd Wednesday of each month
commencing at 10 am

Join us for a cuppa and chat before
the meeting from 9 am

Book Your

FUNCTION

WITH

KILLARNEY BOWLS CLUB



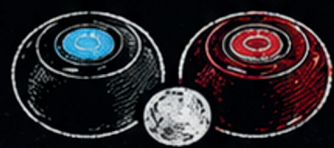
≡ BIRTHDAYS ≡




≡ SPECIAL OCCASIONS ≡




≡ WORK PARTIES ≡



≡ BOWLS & FUN ≡

 (07) 4664 1214

 killarneybowlsclub@gmail.com

 Find us on [Facebook](#)

 41-43 ARBUTUS STREET, KILLARNEY QLD 4373

Great Food • Cold Drinks • Good Times

♥ GET TOGETHER WITH FRIENDS – EVERYONE IS WELCOME! ♥



KILLARNEY

SHOW & RODEO SOCIETY INC.



Events at the

KILLARNEY SHOWGROUNDS

★ 2026 ★

As of 21 May 2026



23 - 24 May	Gold Coast Polocrosse
15th - 20th June	CMCA Solo Network
9th July - 13th July	Toowoomba and Golden West Caravan Club
18th July	Killarney Bonfire Night
24th July - 26th July	Cutting Show
1st - 2nd August	Killarney Polocrosse
30th August	Waddle Saddle & Pedal
12 - 13 Sept	Killarney State School P&C Border Ranges Trail Bike Ride
23rd September	KSRS AGM

★ *Supporting our community through events and tradition* ★



Visit our website
www.killarneyshow.org.au



Like us on Facebook
Killarney Show & Rodeo Society



Turn Your Photos Into Treasured Keepsakes



Personalised photo gifts *made with care*



Hi. I'm Sue, the heart behind S&B
Personalised Printing here in Killarney.



I create personalised photo gifts using
the memories that matter most - loved
ones, pets, milestones and everyday
moments you never want to forget.



Please come and say hi at the expo.
I'd love to hear about the memories that
matter to you.

www.sandbpersonalisedprinting.com



Killarney Senior Citizens Inc
invites you to a

PAINT & SIP
COMMUNITY EVENT

Artist Dawn Head Rose will guide
you in creating your own masterpiece



Sat 6th June - 1.30pm (for 2pm start)
Senior Cit's Hall, 11 Ailanthus St. Killarney

\$50

Price includes all necessary art supplies,
glass of wine, light snacks.
Tea & coffee available

Please **RSVP** & make payment at the Killarney branch of Darling
Downs' Bank by Friday 22nd May.

If you have any queries please call

Dawn on 0448 162 034

or

Angela on 0499 767 907

Knit • Crochet • Create • Connect



Killarney Yarnbombing

Bringing colour and creativity to the streets of Killarney
for the annual Jumpers & Jazz in July festival.

4th Wednesday of the Month
February - August
9am - 12noon

Heritage Centre, Machinery Shed
Willow Street, Killarney

A welcoming community group where people of all
ages and skill levels come together to:

- Learn to knit or crochet
- Share skills and ideas
- Meet new people and enjoy a chat
- Help create colourful coverings for Killarney's street trees

The People Who Made Us

For over 70 years, our organisation has been at the heart of the Killarney community, evolving from Killarney Memorial Hospital to Killarney Memorial Aged Care to K-Life, a name that reflects who we are and where we're headed.

To honour the past work by local citizens in running the organisation successfully for 75 years, a book called *The People Who Made Us* has been written. The book covers how the Hospital started, its major milestones over the years, and tells the personal stories of people, both staff and volunteers, who have been a part of the organisation over its seven decades.

Available for sale at
K-Life Admin or Stephanie's
(83 Grafton Street, Warwick)

\$35

Enquiries
0414 326 871

Postage available



KILLARNEY BOWLS CLUB

☆ **WHAT'S ON** ☆ **JUNE 2026** ☆

BINGO

EVERY WEDNESDAY @ 1:00PM

EYES DOWN 1:30PM

LAST SUNDAY OF
THE MONTH @ 2:00PM

EYES DOWN 2:30PM

DISCO

Family Fun Night

FRIDAY 12TH JUNE

MUSIC FROM 6:00PM

MEMBERS DRAW

Pick the Lock



THURSDAY 6:00PM

SUNDAY 5:30PM

SOCIAL BOWLS

Afternoon

SUNDAY 28TH JUNE

\$5 PER PERSON
FROM 4:00PM

KISS THE KITTY JACKPOT

SUNDAY 7TH JUNE

AT 3:30PM
\$5 PER PERSON

STATE OF ORIGIN

on the Big Screen

WEDNESDAY 17TH JUNE
FROM 6:30PM

DELICIOUS MEALS AVAILABLE

THURSDAY – SATURDAY

BOOKINGS: **JAMES 0447 182 280**

KILLARNEY BOWLS CLUB

★ 41-43 ARBUTUS STREET, KILLARNEY ★

PHONE: (07) 4664 1214

Get together with friends – everyone is welcome!

JOIN US FOR A

FUN FAMILY

SKATE

NIGHT!

6PM
FRIDAY
26TH JUNE



GAMES



PIZZA



DRINKS

**GOLD
COIN
ENTRY**



BAR OPEN

— HELD AT

KREC



KR@C

Built by Community, Powered by Volunteers



TOGETHER WE MAKE IT HAPPEN!

OUR CLUB. OUR COMMUNITY. EVERYONE WELCOME.



BAR STAFF

Help serve and create a great atmosphere



EVENT HELPERS

Assist with events and activities



BBQ HELPERS

Fire up the BBQ and keep our events cooking



GROUNDS & GARDENING

Keep our grounds green and welcoming



MAINTENANCE HELPERS

Help keep our club facilities in top shape



COMMITTEE MEMBERS

Help guide and support our club



GENERAL VOLUNTEERS

Many ways to help, big difference

There are so many ways to get involved and support your local community. Whether you can help regularly or just occasionally, **every helping hand** makes a difference.

Join the Team!

Be part of something that brings our community together.



INTERESTED?

Email us anytime:

killarneyrecclub@gmail.com

We'd love to hear from you and find the right way for you to get involved!



SUPPORT LOCALS

We support our locals and our local groups.



BUILD CONNECTIONS

Meet new people and make great connections.



STRENGTHEN OUR COMMUNITY

Together we keep our club strong for everyone.

Your Community. Your Club. Your Place.



UnitingCare

farmer to farmer



Supporting farming families

The farmer to farmer support line provides free, support to farmers or their families, when times are tough.

Talk to a fellow farmer who understands the challenges of farming life.

When you're doing it tough, don't go it alone.

Save our number on your phone today.



1800 936 229



SCAN ME

unitingcareqld.com.au/farmertofarmer

Supported by

Woolworths 
The fresh food people



Queensland Government
Queensland Health

Killarney Senior Citizens

♥ Friendship. Fun. Community. ♥

A welcoming community
for seniors to connect,
socialise and enjoy
life *together.*

*New
Members
Welcome!*



MEETING TIME

Last Monday
of each month
at 1.30pm



WHERE

Ailanthus Street,
Killarney



WHAT WE DO

- ♥ Cards
- ♥ Social mornings
- ♥ Outings

*Good company,
great times!*



Enjoy friendship, laughter and a cuppa!
Everyone is welcome.



CONTACT

Angela Phillips
0499 767 907

*We'd love to
see you there!*

♥ ♥ ♥ *Better together. Stronger community.* ♥ ♥ ♥

KILLARNEY POLOCROSSE — CARNIVAL —



1ST & 2ND
AUGUST 2026



CANTEEN
OPERATING
ALL WEEKEND



BAR
OPERATING
ALL WEEKEND



**3 COURSE
MEAL**
SATURDAY NIGHT

EAST VS WEST



FEATURE GAME

SATURDAY AFTERNOON

K

*GREAT SPORT. GREAT PEOPLE.
GREAT WEEKEND!*

Calendar of Events

June	
1/6/2026	Killarney Men's Shed
3/6/2026	Bingo - Killarney Bowls Club
4/6/2026	Killarney Girls Brigade
5/6/2026	K-Life Auxiliary Meeting
5/6/2026	Killarney Men's Shed
6/6/2026	Sip and Paint
6/6/2026	Community Garden - Weekly Garden Gatherings
8/6/2026	Killarney Men's Shed
9/6/2026	Dementia Support Group
9/6/2026	Killarney Country Quilters and Craft Group
10/6/2026	Killarney CWA Meeting
10/6/2026	Bingo - Killarney Bowls Club
11/6/2026	Killarney Girls Brigade
12/6/2026	Disco on the Green with DJ Bruce - Killarney Bowls Club
12/6/2026	Killarney Men's Shed
13/06/2026	Community Garden - Weekly Garden Gatherings
15/06/2026	Killarney Men's Shed
17/06/2026	State of Origin on the Big Screen - Killarney Bowls Club



17/06/2026	Bingo - Killarney Bowls Club
18/06/2026	Killarney Girls Brigade
19/06/2026	Killarney Men's Shed
20/06/2026	Community Garden - Weekly Garden Gatherings
21/06/2026	Killarney Markets
22/06/2026	Killarney Men's Shed
23/06/2026	Killarney Country Quilters and Craft Group
24/06/2026	Killarney Yarn Bombing
24/06/2026	Bingo - Killarney Bowls Club
25/06/2026	Killarney Girls Brigade
<small>26/06/2026</small>	Killarney Men's Shed
27/06/2026	Bingo - Killarney Bowls Club
27/06/2026	Community Garden - Weekly Garden Gatherings
28/06/2026	Social Bowls - Killarney Bowls Club
29/06/2026	Killarney Men's Shed

July	
3/7/2026	K-Life Auxiliary Meeting
3/7/2026	Killarney Men's Shed
4/7/2026	Community Garden - Weekly Garden Gatherings
6/7/2026	Killarney Men's Shed
8/7/2026	Killarney CWA Meeting
10/7/2026	Killarney Country Quilters and Craft Group
10/7/2026	Killarney Men's Shed
11/7/2026	Community Garden - Weekly Garden Gatherings
13/07/2026	Killarney Men's Shed
17/07/2026	Killarney Men's Shed
18/07/2026	Community Garden - Weekly Garden Gatherings
20/07/2026	Killarney Men's Shed
23/07/2026	Killarney Girls Brigade
24/07/2026	Killarney Country Quilters and Craft Group
24/07/2026	Killarney Men's Shed
25/07/2026	Bingo - Killarney Bowls Club
25/07/2026	Community Garden - Weekly Garden Gatherings
27/07/2026	Killarney Men's Shed
30/07/2026	Killarney Girls Brigade
31/07/2026	Killarney Men's Shed
10th July	Disco on the Green with DJ Bruce - Killarney Bowls Club
14th July	Dementia Support Group
18th July	Killarney Bonfire Night - Killarney Show and Rodeo Society
19th July	Killarney Markets
24th - 26th July	Cutting Show - Killarney Show and Rodeo Society
22/07/2026	Killarney Yarn Bombing

August	
1/8/2026	Community Garden - Weekly Garden Gatherings
3/8/2026	Killarney Girls Brigade
6/8/2026	Killarney Girls Brigade
7/8/2026	Killarney Men's Shed
7/8/2026	K-Life Auxiliary Meeting
10/8/2026	Killarney Men's Shed
12/8/2026	Killarney CWA Meeting
13/08/2026	Killarney Girls Brigade
14/08/2026	Killarney Country Quilters and Craft Group
14/08/2026	Killarney Men's Shed
15/08/2026	Community Garden - Weekly Garden Gatherings
17/08/2026	Killarney Men's Shed
20/08/2026	Killarney Girls Brigade
21/08/2026	Killarney Men's Shed
22/08/2026	Community Garden - Weekly Garden Gatherings
24/08/2026	Killarney Men's Shed
26/08/2026	Killarney Yarn Bombing
27/08/2026	Killarney Girls Brigade
28/08/2026	Killarney Country Quilters and Craft Group
28/08/2026	Killarney Men's Shed
29/08/2026	Bingo - Killarney Bowls Club
31/08/2026	Killarney Men's Shed
11th August	Dementia Support Group
14th August	Disco on the Green with DJ Bruce - Killarney Bowls Club
16th August	Killarney Markets
1st & 2nd August	Killarney Polo Cross - Killarney Show and Rodeo Society
30th August	Waddle Saddle & Pedal - Killarney Show and Rodeo Society



Community



Australian Government

Department of Health,
Disability and Ageing

YOUR VOICE MATTERS!

HELP SHAPE HEALTH CARE IN KILLARNEY

Share your thoughts in the K-Life Health Survey and help guide programs, activities and services across Killarney.



SHARE YOUR
THOUGHTS



HELP IMPROVE
SERVICES AND
PROGRAMS



BUILD A
HEALTHIER
COMMUNITY



Have your say today!

Scan the QR code to
complete the survey.



Together, we can create better
health outcomes for Killarney.

