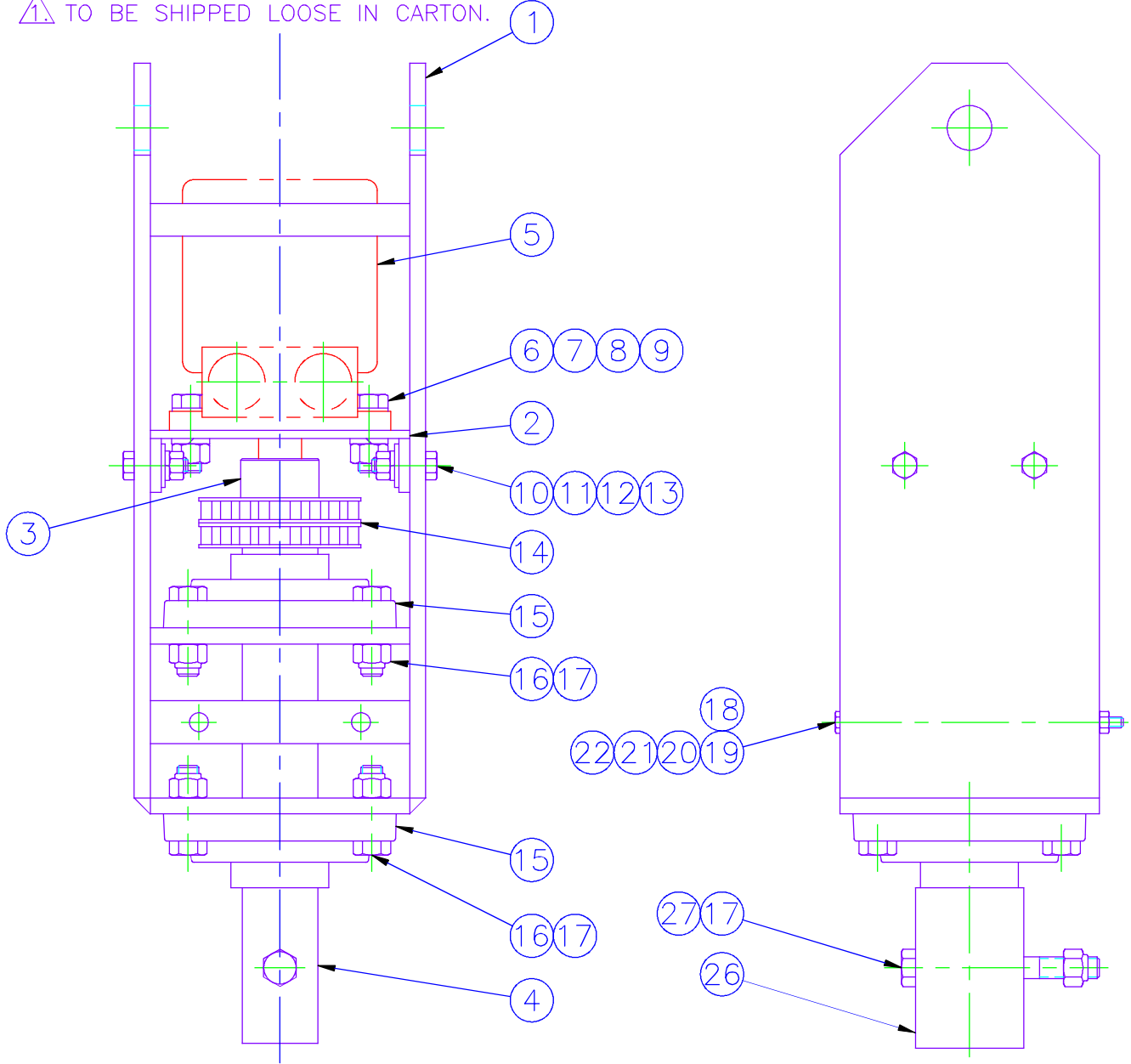


This drawing contains confidential proprietary information of Triple C Manufacturing, Inc. and is subject to return upon request. The furnishing of this drawing is not to be construed as the grant of any license, express or implied, to manufacture, have manufactured, use or sell the structures shown hereon.

NOTES:

1. TO BE SHIPPED LOOSE IN CARTON.



COVER AND COUPLER
OMITTED FOR CLARITY

PHD1-8-256 2 9/16
COUPLER SHOWN

1.	31	2	8M3K-122.0 HOSE ASSEMBLY
	30	2	6815 8-8 FITTING, 90°
1.	29	1	PHD1-15 ADAPTER SLEEVE
	28	1	PHD1-9 ADAPTER
1.	27	1	1/2-13x4-1/4 HEX BOLT
	26	1	PHD1-8-256 2 9/16 COUPLER
1.	25	1	PHD1-8-200 2" COUPLER
	24	2	6500-8 FITTING, 90°
1.	23	2	6400-8-10 FITTING, STRAIGHT
	22	2	1/4 LOCK NUT
1.	21	2	1/4 LOCK WASHER
	20	2	1/4 FLAT WASHER
1.	19	2	1/4-20x6 1/2 HEX BOLT
	18	1	PHD1-7 COVER
1.	17	9	1/2-13 NYLOCK NUT
	16	8	1/2-13x1 3/4 HEX BOLT
1.	15	2	SCJ 1 3/4 FAFNIR BEARING
	14	1	5016 COUPLER CHAIN
1.	13	4	3/8-16 HEX NUT
	12	4	3/8 LOCK WASHER
1.	11	4	3/8 FLAT WASHER
	10	4	3/8-16x1-1/4 HEX BOLT
1.	9	2	1/2-13 HEX NUT
	8	2	1/2 LOCK WASHER
1.	7	2	1/2x14 GA MACHINE BUSHING
	6	2	1/2-13 x 1 1/2 HEX BOLT
1.	5	1	111A-164-ASO HYD MOTOR
	4	1	PHD1-5 DRIVE SHAFT
1.	3	1	PHD1-6 MOTOR SPROCKET
	2	1	PHD1-3 MOTOR MOUNT PLATE
1.	1	1	PHD1-4 FRAME WELDMENT
	ITEM QTY PART NUMBER & DESCRIPTION		
TRIPLE C, INC.			
P.O. BOX 248, SABETHA, KS 66534 (785) 284-3674 FAX (785) 284-3931			
MATERIAL:			
NOTED			
DWG PATH: \DWG\PHD			
DO NOT SCALE DRAWING		SHEET 11 OF	SCALE: 1/4
TOLERANCES Unless otherwise specified		DRAWN BY: CEDRIC HEINIGER 11/21/95	
XX .010		TITLE: ASSEMBLY HYDRA-PHD	
XXX .005		DRAWING NUMBER:	
XXXX .0005		PHD1-12	
X/X 1/32		REV	
ANGLE 0°30'		D	