

This drawing contains confidential proprietary information of Triple C, Inc. and is subject to return upon request. The furnishing of this drawing is not to be construed as the grant of any license, express or implied, to manufacture, have manufactured, use or sell the structures shown hereon.

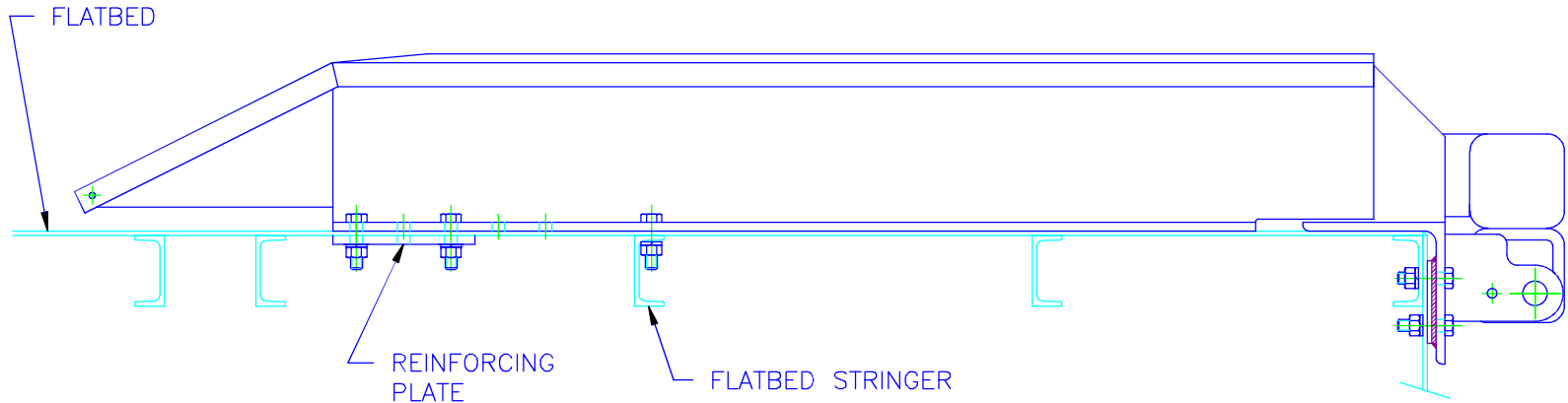


FIG 1

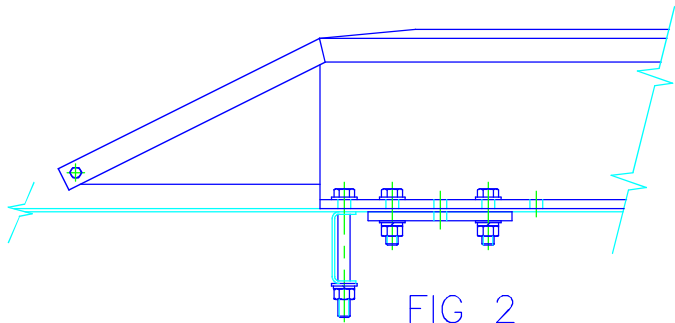


FIG 2

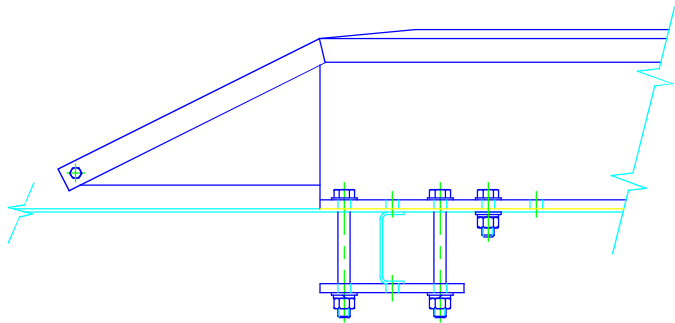


FIG 3

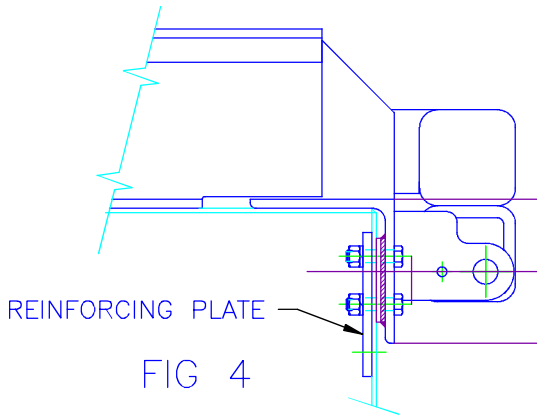


FIG 4

LOCATE AND DRILL $\phi 17/32$ HOLES IN BASE TO USE REARWARD STRINGERS WHEN POSSIBLE. FIG 1.

USE REINFORCING PLATE AT REAR WHEN NECESSARY. FIG 4.

USE EXISTING FLATBED STRINGERS WHEN POSSIBLE. FIGS 1, 2 AND 3.

ATTACH HYDRA-BD 2200 TO FLATBED USING GRADE 5, $1/2$ " BOLTS, LOCK WASHERS, WASHERS AND NUTS.

TRIPLE C, INC. P.O. BOX 248, SABETHA, KS 66534 (785) 284-3674 FAX (785) 284-3931		
DWG PATH: \DWG\BD		
DO NOT SCALE DRAWING	SCALE: NTS	DRAWN BY: CEDRIC HEINIGER 03/01/96
TITLE: HYDRA-BD 2200 ALTERNATE MOUNTING CONFIG		
DRAWING NUMBER: BD22-50F		REV A