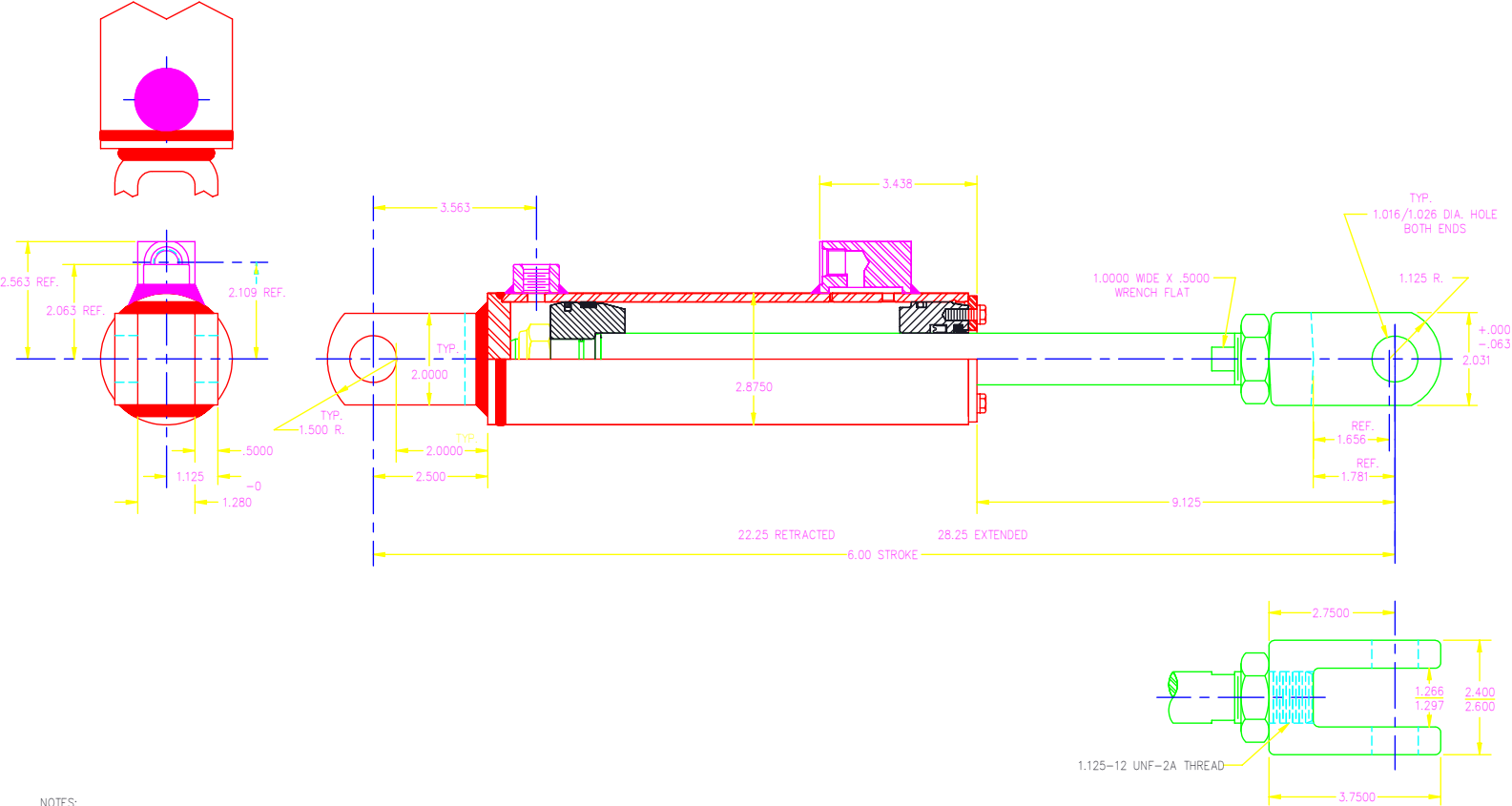


This drawing contains confidential proprietary information of Triple C, Inc. and is subject to return upon request. The furnishing of this drawing is not to be construed as the grant of any license, express or implied, to manufacture, have manufactured, use or sell the structures shown hereon.



- NOTES:
- 1. 1.1250 DIA. HARD CHROME PLATED ROD
  - 2. .563-18 SAE NO. 6 O-RING PORTS
  - 3. REPHASING ORIFICE DIA. = .046
  - 4. 2500 PSI MAXIMUM OPERATING PRESSURE
  - 5. SEAL KIT NO. 44-4598-S INCLUDES ITEMS 3,4,5,7,11,12,16 & 17
  - 6. BASE PINEYE SAFETY FACTOR = 1.33:1
  - 7. STATIC TEST AT 3000 PSI IN BOTH DIRECTIONS
  - 8. PAINT GLOSS BLACK

TRIPLE C, INC.			
P.O. BOX 248, SABETHA, KS 66534 (785) 284-3674 FAX (785) 284-3931			
MATERIAL: X			
DWG PATH: \DWG\			
DO NOT SCALE DRAWING	SHEET 1 OF 1	SCALE: X:X	DRAWN BY: CHRIS ABERLE X
TOLERANCES Unless otherwise specified XX .010 XXX .005 XXXX .0005 X/X 1/32 ANGLE 0°30'	TITLE: CYLINDER, PASSENGER ARM, 2.500 BORE		
DRAWING NUMBER: GR250-PA			REV