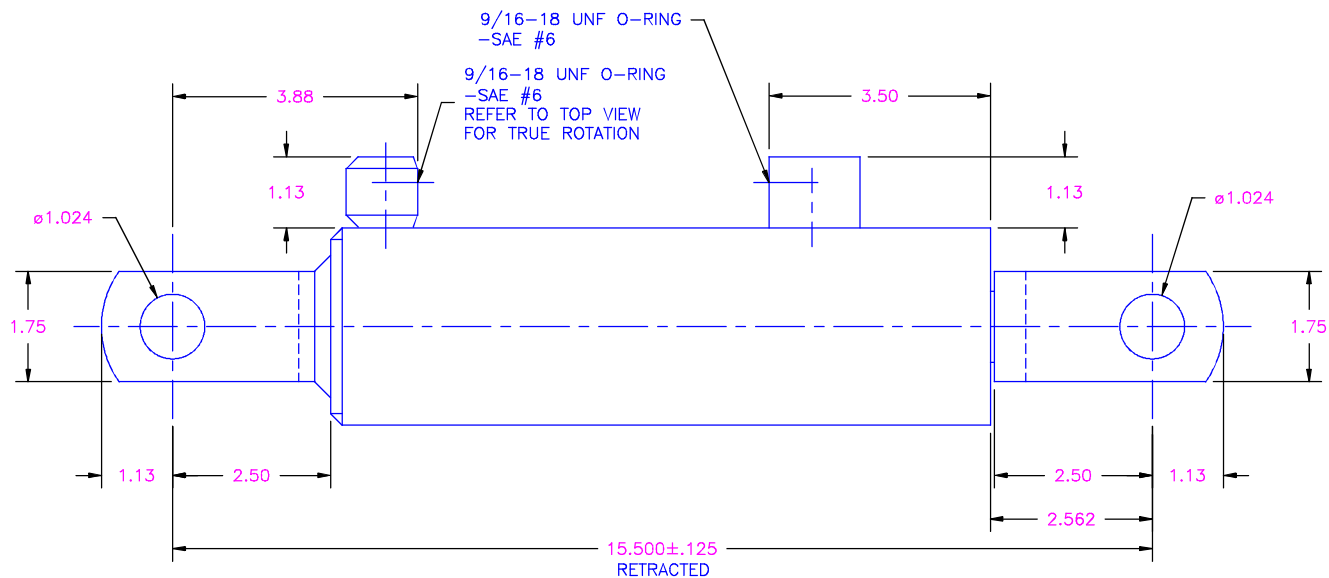
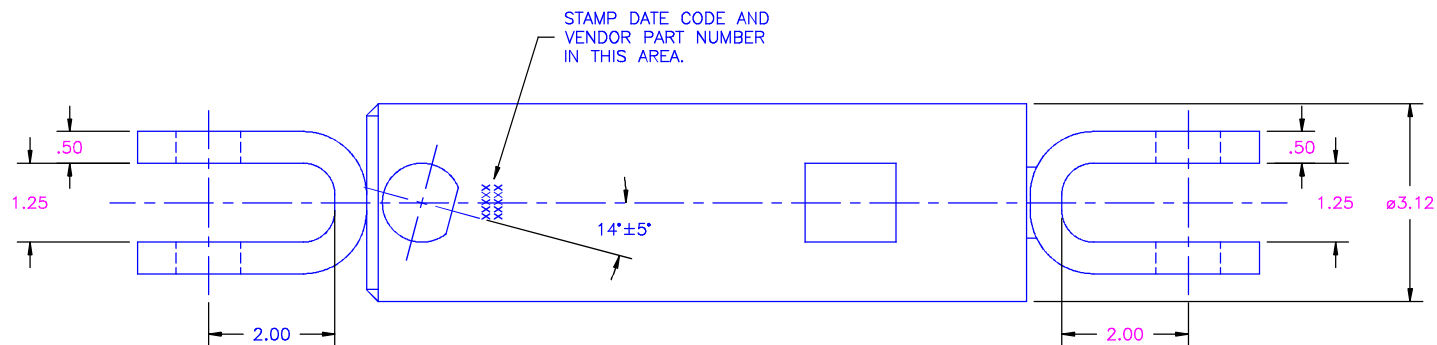


This drawing contains confidential proprietary information of Triple C, Inc. and is subject to return upon request. The furnishing of this drawing is not to be construed as the grant of any license, express or implied, to manufacture, have manufactured, use or sell the structures shown hereon.

CYLINDER SPECS

WORKING PRESSURE:	2500 PSI	BORE:	2.750
OPERATING TEMP:	-40°F TO 200°F	ROD DIA:	1.125
FINISH:	GLOSS BLACK	STROKE:	6.000
ROD FINISH:	HARD CHROME		



NOTE:
CYLINDER TO REPHASE AT FULL EXTENSION.

TRIPLE C, INC. P.O. BOX 248, SABETHA, KS 66534 (785) 284-3674 FAX (785) 284-3931			
MATERIAL:			
DWG PATH: \DWG\CY			
DO NOT SCALE DRAWING	SHEET 1 OF 1	SCALE: 1/2	DRAWN BY: CEDRIC HEINGER 09/23/97
TOLERANCES <small>Unless otherwise specified</small>	TITLE: REPHASING HYDRAULIC CYLINDER DRIVERS SIDE ARM, BD 2200		
XX .02 XXX .005 XXXX .0005 X/X 1/32 ANGLE 0°30'	DRAWING NUMBER: BD275-DA		REV X