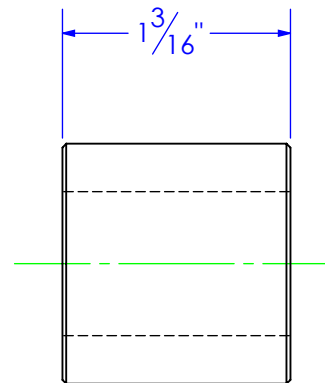
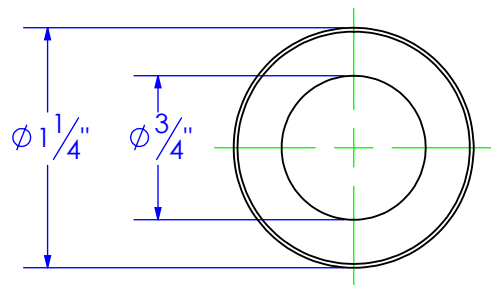



PART NUMBER	DESCRIPTION	MATERIAL	REVISIONS			
BU-0.75IDx1.25ODx1.1875	BUSHING, 3/4"ID x 1-1/4"OD x 1-3/16"	ST-MT 3/4x1-1/4	REV.	DESCRIPTION	DATE	APPROVED
			A	INITIAL RELEASE	1/15/2020	



PROPRIETARY AND CONFIDENTIAL
 THE INFORMATION CONTAINED IN THIS
 DRAWING IS THE SOLE PROPERTY OF TRIPLE
 C INC. ANY REPRODUCTION IN PART OR
 AS A WHOLE WITHOUT THE WRITTEN
 PERMISSION OF TRIPLE C, INC IS PROHIBITED.

UNLESS OTHERWISE SPECIFIED:
 DIMENSIONS ARE IN INCHES
 TOLERANCES:
 FRACTIONAL $\pm 1/16$
 ANGULAR: MACH ± 1 BEND \pm
 TWO PLACE DECIMAL $\pm .010$
 THREE PLACE DECIMAL $\pm .005$

MATERIAL ST-MT 3/4x1-1/4
 DO NOT SCALE DRAWING

	NAME	DATE	P.O. BOX 248, SABETHA, KS 66534 (785) 284-3674 FAX (785) 284-3931		
D: DRAWN	ETHAN	1/15/2020			
PART #	BU-.75IDx1.25OD L1.1875				
ASM #	Asm #				
COMMENTS:			BUSHING, 3/4"ID x 1-1/4"OD L: 1-3/16"		
			SIZE	DWG. NO.	REV
			A	95-2238	A
			SCALE: 1:1	WEIGHT: 0.26	SHEET 1 OF 1