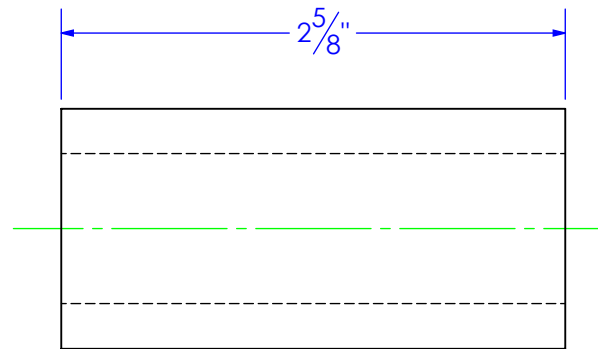
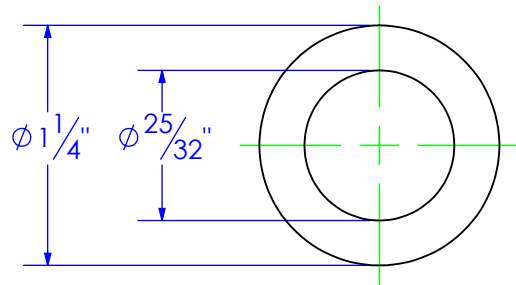


PART NUMBER	DESCRIPTION	MATERIAL
BU-1.25x.7813 L 2.625	LENGTH: 2-5/8"	ST-MT 3/4x1-1/4


REVISIONS			
REV.	DESCRIPTION	DATE	APPROVED
A	INITIAL RELEASE	1/15/2020	



PROPRIETARY AND CONFIDENTIAL
 THE INFORMATION CONTAINED IN THIS
 DRAWING IS THE SOLE PROPERTY OF TRIPLE
 C INC. ANY REPRODUCTION IN PART OR
 AS A WHOLE WITHOUT THE WRITTEN
 PERMISSION OF TRIPLE C, INC IS PROHIBITED.

UNLESS OTHERWISE SPECIFIED:
 DIMENSIONS ARE IN INCHES
 TOLERANCES:
 FRACTIONAL $\pm 1/16$
 ANGULAR: MACH ± 1 BEND \pm
 TWO PLACE DECIMAL $\pm .010$
 THREE PLACE DECIMAL $\pm .005$

MATERIAL ST-MT 3/4x1-1/4
 DO NOT SCALE DRAWING

	NAME	DATE	P.O. BOX 248, SABETHA, KS 66534 (785) 284-3674 FAX (785) 284-3931		
D: DRAWN	ETHAN	1/15/2020			
PART #	BU-1.25ODx.7813ID L2.625				
ASM #	Asm #				
COMMENTS:			SIZE DWG. NO. REV A 95-2236 A		
LENGTH: 2-5/8"					
SCALE: 1:1			WEIGHT: 0.56		SHEET 1 OF 1