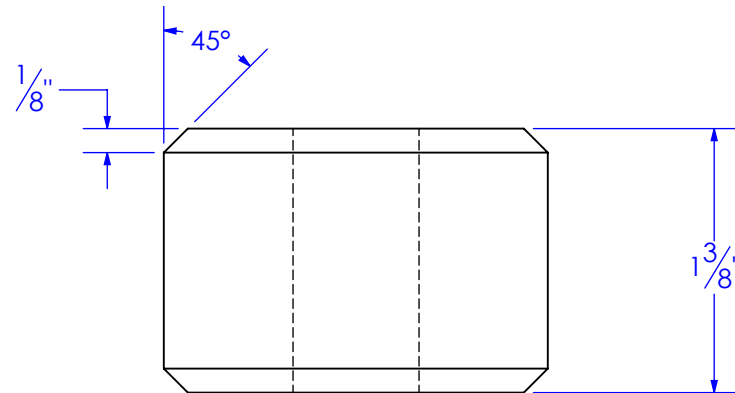
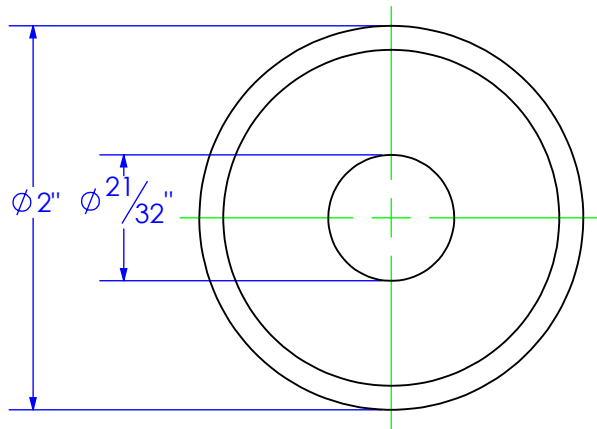


PART NUMBER	DESCRIPTION	MATERIAL
BU-0.6563IDx2.0ODX1.375	BUSHING, 21/32"ID x 2.0"OD L 1-3/8"	2" SHAFT

REVISIONS			
REV.	DESCRIPTION	DATE	APPROVED
A	INITIAL RELEASE	7/1/2019	




PROPRIETARY AND CONFIDENTIAL
 THE INFORMATION CONTAINED IN THIS
 DRAWING IS THE SOLE PROPERTY OF TRIPLE
 C INC. ANY REPRODUCTION IN PART OR
 AS A WHOLE WITHOUT THE WRITTEN
 PERMISSION OF TRIPLE C, INC IS PROHIBITED.

UNLESS OTHERWISE SPECIFIED:
 DIMENSIONS ARE IN INCHES
 TOLERANCES:
 FRACTIONAL $\pm 1/16$
 ANGULAR: MACH ± 1 BEND \pm
 TWO PLACE DECIMAL $\pm .010$
 THREE PLACE DECIMAL $\pm .005$

MATERIAL 2" SHAFT

DO NOT SCALE DRAWING

	NAME	DATE	P.O. BOX 248, SABETHA, KS 66534 (785) 284-3674 FAX (785) 284-3931		
D: DRAWN	ETHAN	7/2/2019			
PART #	BU-.6563x2.0 L 1.375				
ASM #	Asm #				
COMMENTS:					
BUSHING, 21/32" ID x 2.0" OD L 1-3/8"			SIZE	DWG. NO.	REV
			A	95-2231	A
			SCALE: 1:1	WEIGHT: 1.07	SHEET 1 OF 1

