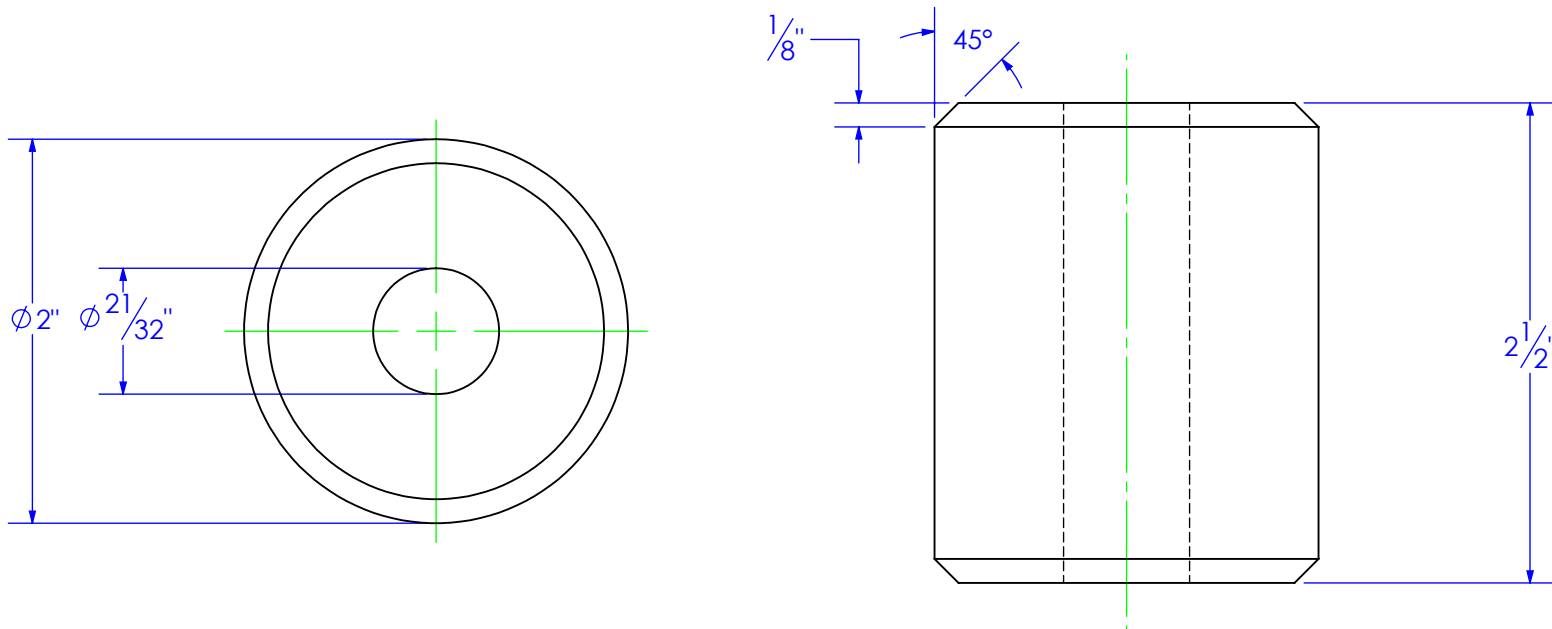


PART NUMBER	DESCRIPTION	MATERIAL
BU-.6563x2.0 L 2.5	BUSHING, 21/32"ID x 2.0"OD L 2-1/2"	2" HRS

REVISIONS			
REV.	DESCRIPTION	DATE	APPROVED
A	INITIAL RELEASE	7/2/2019	




PROPRIETARY AND CONFIDENTIAL
 THE INFORMATION CONTAINED IN THIS
 DRAWING IS THE SOLE PROPERTY OF TRIPLE
 C INC. ANY REPRODUCTION IN PART OR
 AS A WHOLE WITHOUT THE WRITTEN
 PERMISSION OF TRIPLE C, INC IS PROHIBITED.

UNLESS OTHERWISE SPECIFIED:
 DIMENSIONS ARE IN INCHES
 TOLERANCES:
 FRACTIONAL $\pm 1/16$
 ANGULAR: MACH ± 1 BEND \pm
 TWO PLACE DECIMAL $\pm .010$
 THREE PLACE DECIMAL $\pm .005$

MATERIAL 2" HRS

DO NOT SCALE DRAWING

	NAME	DATE	P.O. BOX 248, SABETHA, KS 66534 (785) 284-3674 FAX (785) 284-3931		
D: DRAWN	ETHAN	7/2/2019			
PART #	BU-.6563x2 L 2.5				
ASM #	Asm #				
COMMENTS:					
BUSHING, 21/32"ID x 2.0"OD L 2-1/2"			SIZE	DWG. NO.	REV
			A	95-2230	A
			SCALE: 1:1	WEIGHT: 1.96	SHEET 1 OF 1