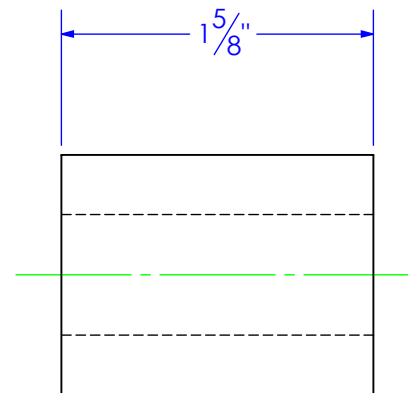
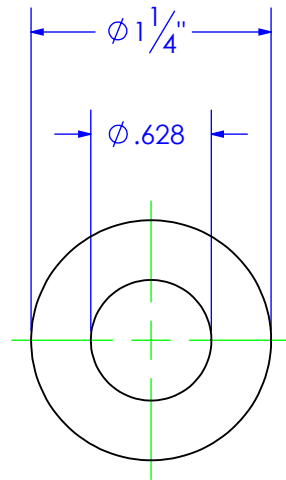


PART NUMBER	DESCRIPTION	MATERIAL
BU-1.25x.75 L 1.625	BUSHING, IDLER WHEEL MOUNT, HYDRA FIGURE 8	

REVISIONS			
REV.	DESCRIPTION	DATE	APPROVED
A	INITIAL RELEASE	7/1/2019	



**PROPRIETARY AND CONFIDENTIAL**  
THE INFORMATION CONTAINED IN THIS  
DRAWING IS THE SOLE PROPERTY OF TRIPLE  
C INC. ANY REPRODUCTION IN PART OR  
AS A WHOLE WITHOUT THE WRITTEN  
PERMISSION OF TRIPLE C, INC IS PROHIBITED.

UNLESS OTHERWISE SPECIFIED:  
DIMENSIONS ARE IN INCHES  
TOLERANCES:  
FRACTIONAL  $\pm 1/16$   
ANGULAR: MACH  $\pm 1$  BEND  $\pm$   
TWO PLACE DECIMAL  $\pm .010$   
THREE PLACE DECIMAL  $\pm .005$

MATERIAL 1-1/4" HRS  
DO NOT SCALE DRAWING

	NAME	DATE
D: DRAWN	ETHAN	12/13/2019
PART #	BU-1.25x.75 L 1.625	
ASM #	Asm #	
COMMENTS:		
BUSHING, IDLER WHEEL MOUNT, HYDRA FIGURE 8		

P.O. BOX 248, SABETHA, KS 66534  
(785) 284-3674 FAX (785) 284-3931



SIZE	DWG. NO.	REV
A	95-2228	A
SCALE: 1:1	WEIGHT: 0.42	SHEET 1 OF 1