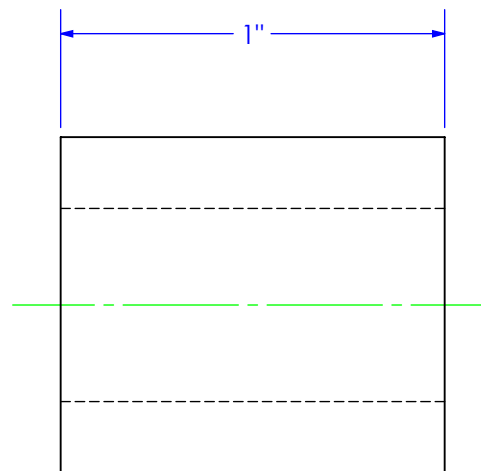
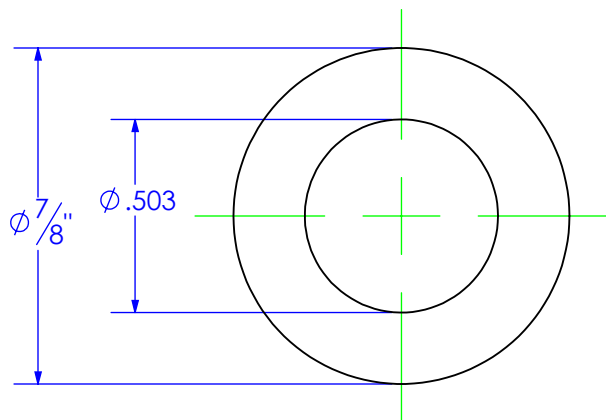


PART NUMBER	DESCRIPTION
BU-.875x.5 L 1	BUSHING, 7/8x1/2 L 1"

REVISIONS			
REV.	DESCRIPTION	DATE	APPROVED
A	INITIAL RELEASE	7/2/2019	




**QTY 2 EACH PER ASSY**

**PROPRIETARY AND CONFIDENTIAL**  
THE INFORMATION CONTAINED IN THIS  
DRAWING IS THE SOLE PROPERTY OF TRIPLE  
C INC. ANY REPRODUCTION IN PART OR  
AS A WHOLE WITHOUT THE WRITTEN  
PERMISSION OF TRIPLE C, INC IS PROHIBITED.

UNLESS OTHERWISE SPECIFIED:  
DIMENSIONS ARE IN INCHES  
TOLERANCES:  
FRACTIONAL  $\pm 1/16$   
ANGULAR: MACH  $\pm 1$  BEND  $\pm$   
TWO PLACE DECIMAL  $\pm .010$   
THREE PLACE DECIMAL  $\pm .005$

MATERIAL -

DO NOT SCALE DRAWING

	NAME	DATE	P.O. BOX 248, SABETHA, KS 66534 (785) 284-3674 FAX (785) 284-3931		
DRAWN	ETHAN	12/13/2019			
PART #	BU-.875X.5 L 1				
ASM #	Asm #				
COMMENTS:					
BUSHING, 7/8"OD x 1/2" ID L 1.0"		SIZE	DWG. NO.		REV
		A	95-2227		A
		SCALE: 2:1	WEIGHT: 0.11		SHEET 1 OF 1