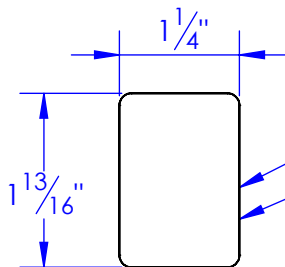
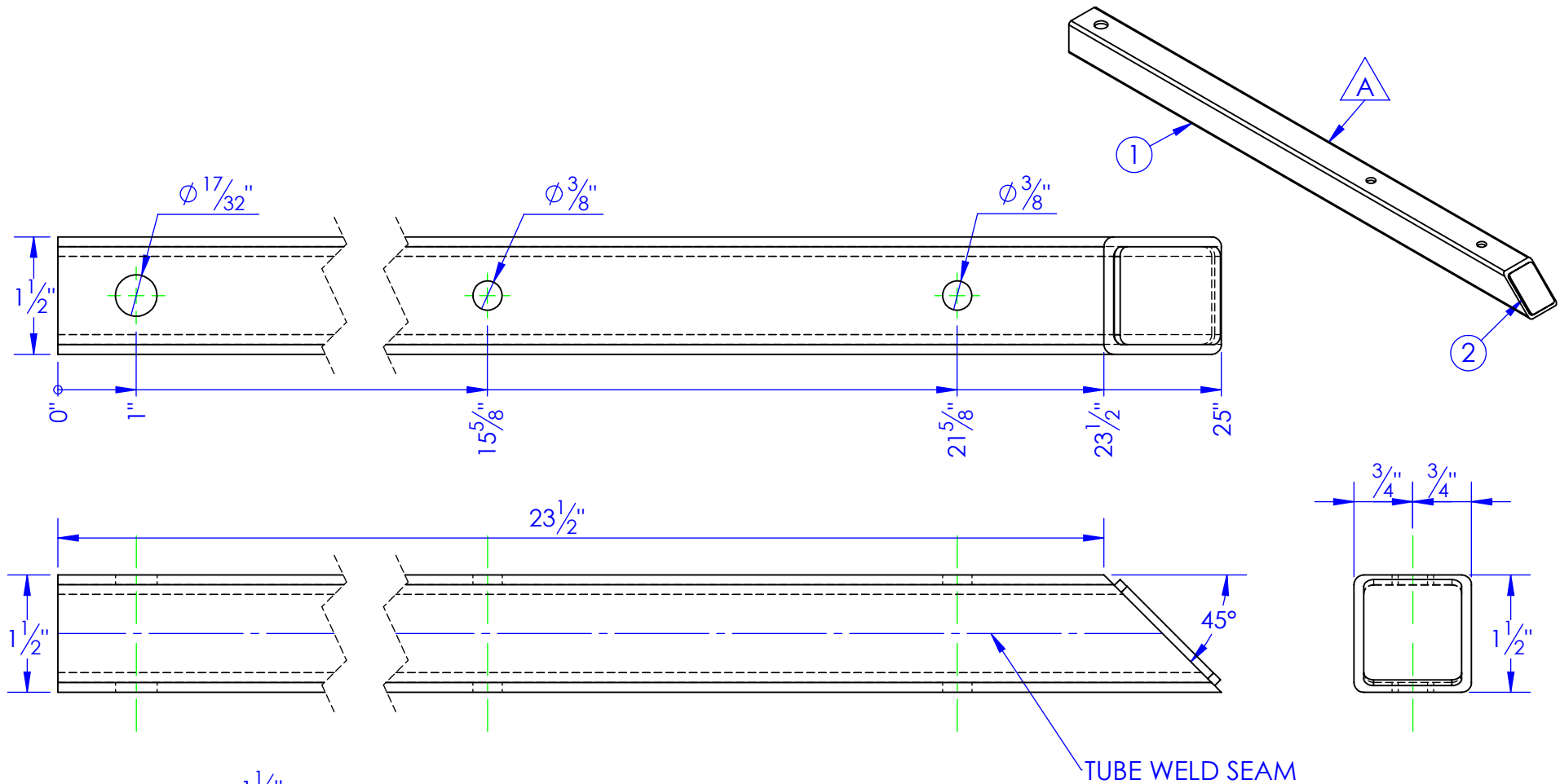


ITEM NO.	PART NUMBER	DESCRIPTION	MATERIAL	QTY.
1	FP-HFL-543	PUSHER UPRIGHT TUBE	ST 1-1/2" x 11ga.	1
2	FP-HFL-543 END CAP	PUSHER UPRIGHT END CAP	12ga HRS.	1

REV.	REVISIONS DESCRIPTION	DATE	APPROVED
A	UPDATED TO NEW STANDARD PRINT FROM # HFL-541	3/1/2012	



**FP-HFL-543 END CAP  
PUSHER UPRIGHT END CAP  
12ga HRS.**

**PROPRIETARY AND CONFIDENTIAL**  
THE INFORMATION CONTAINED IN THIS  
DRAWING IS THE SOLE PROPERTY OF TRIPLE  
C INC. ANY REPRODUCTION IN PART OR  
AS A WHOLE WITHOUT THE WRITTEN  
PERMISSION OF TRIPLE C INC. IS PROHIBITED.

DIMENSIONS ARE IN INCHES  
TOLERANCES:  
FRACTIONAL  $\pm 1/16$   
ANGULAR: MACH  $\pm 1$  BEND  $\pm$   
TWO PLACE DECIMAL  $\pm 0.010$   
THREE PLACE DECIMAL  $\pm 0.005$

MATERIAL ---  
DO NOT SCALE DRAWING

NAME	DATE
DRAWN HEATH	3/5/2012
PART # FP-HFL-543	
ASM # assembly	
COMMENTS:	
PUSHER UPRIGHT TUBE	

P.O. BOX 248,  
SABETHA, KS 66534

**TRIPLE C**  
INC.

SIZE	DWG. NO.	REV.
A	40-2307	A
SCALE: 1:2	WEIGHT: 4.76	SHEET 1 OF 1