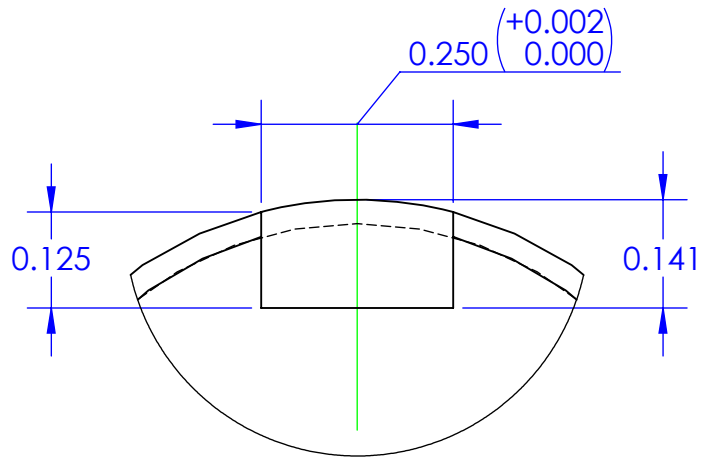
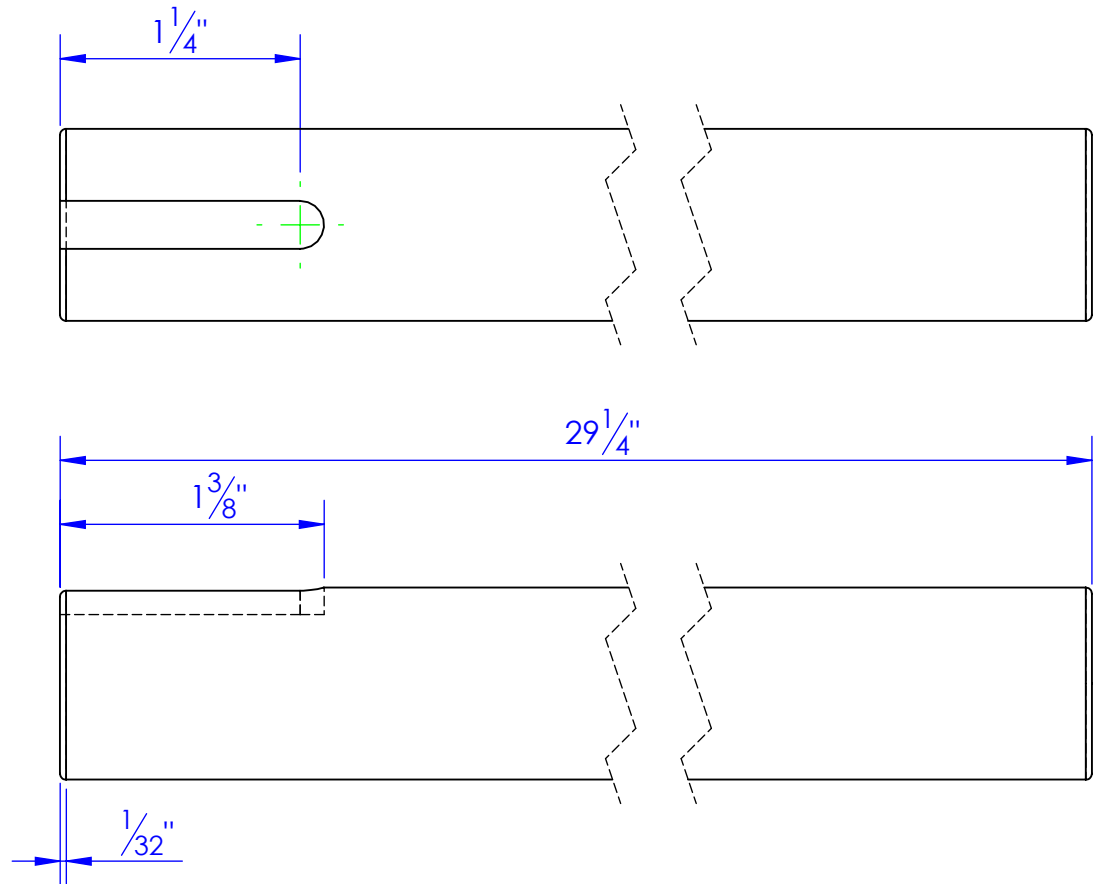
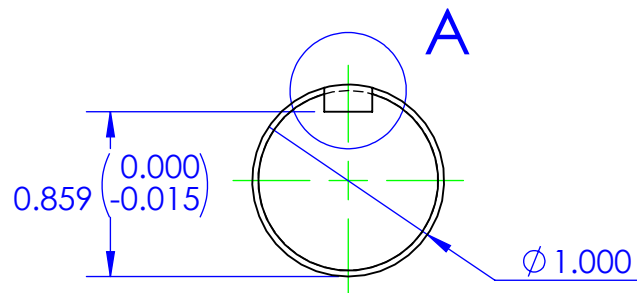


PART NUMBER	DESCRIPTION	MATERIAL
FP-HFL-407	CR 1x4142, CRANK ARM SHAFT KEYED	CR 1x4142

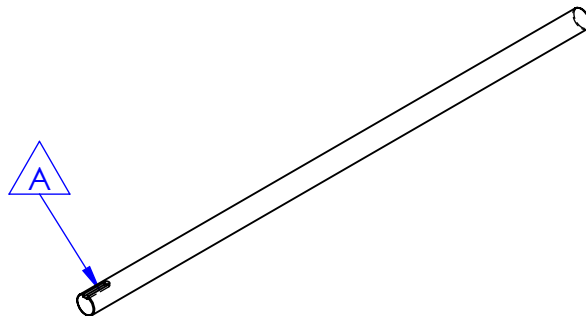
	REVISIONS		
REV.	DESCRIPTION	DATE	APPROVED
A	LENGTHENED KEYWAY TO 1-1/2 FROM 7/8"	2/2/2012	



DETAIL A  
SCALE 4 : 1



NOTES:  
1. MACHINE FOR A 1/4x1/4 KEYWAY



**PROPRIETARY AND CONFIDENTIAL**  
THE INFORMATION CONTAINED IN THIS  
DRAWING IS THE SOLE PROPERTY OF TRIPLE  
C INC. ANY REPRODUCTION IN PART OR  
AS A WHOLE WITHOUT THE WRITTEN  
PERMISSION OF TRIPLE C INC. IS PROHIBITED.

DIMENSIONS ARE IN INCHES  
TOLERANCES:  
FRACTIONAL  $\pm 1/16$   
ANGULAR: MACH  $\pm 1$  BEND  $\pm$   
TWO PLACE DECIMAL  $\pm 0.010$   
THREE PLACE DECIMAL  $\pm 0.005$

MATERIAL CR 1x4142  
DO NOT SCALE DRAWING

NAME	DATE
DRAWN HEATH	2/20/2013
PART #	FP-HFL-407
ASM #	

COMMENTS:  
CR 1x4142,  
CRANK ARM  
SHAFT KEYED

P.O. BOX 248,  
SABETHA, KS 66534

**TRIPLE C**  
INC.

SIZE <b>A</b>	DWG. NO. <b>40-2302</b>	REV. <b>A</b>
SCALE: 1:1	WEIGHT: 6.50 LBS.	SHEET 1 OF 1