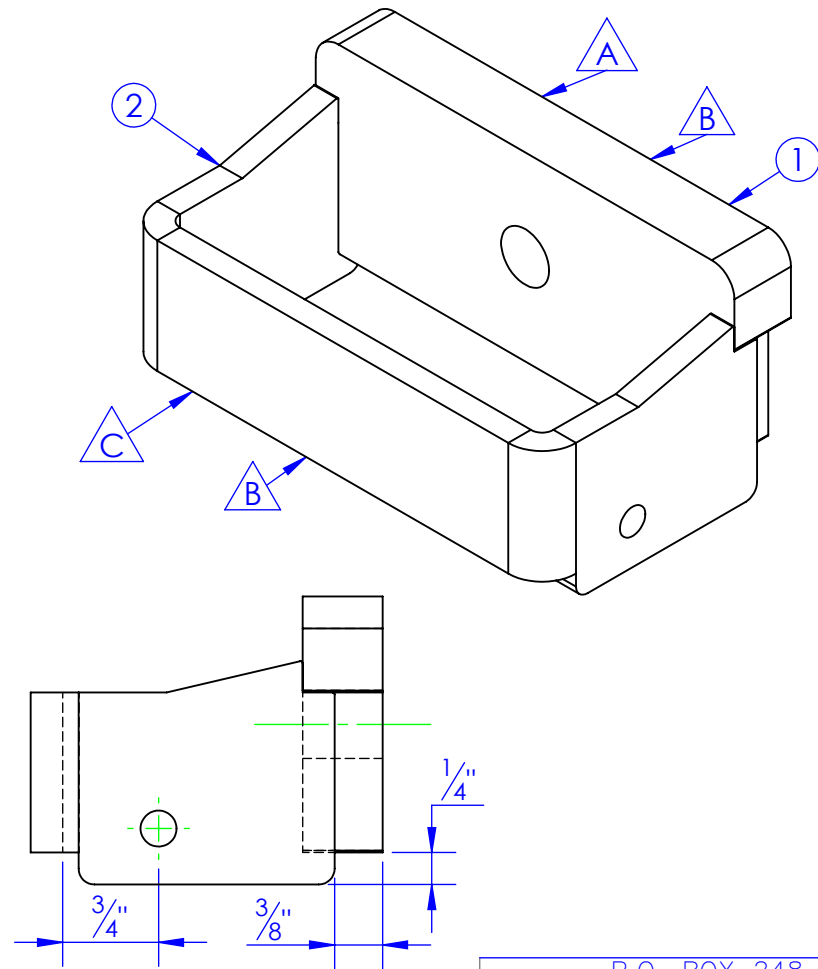
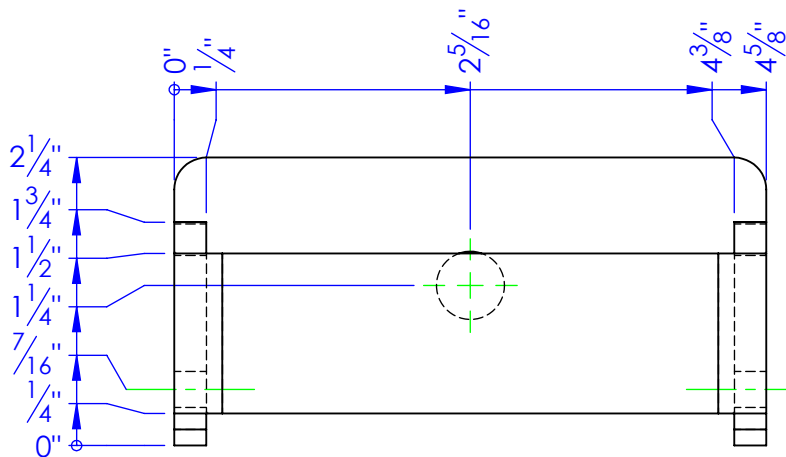
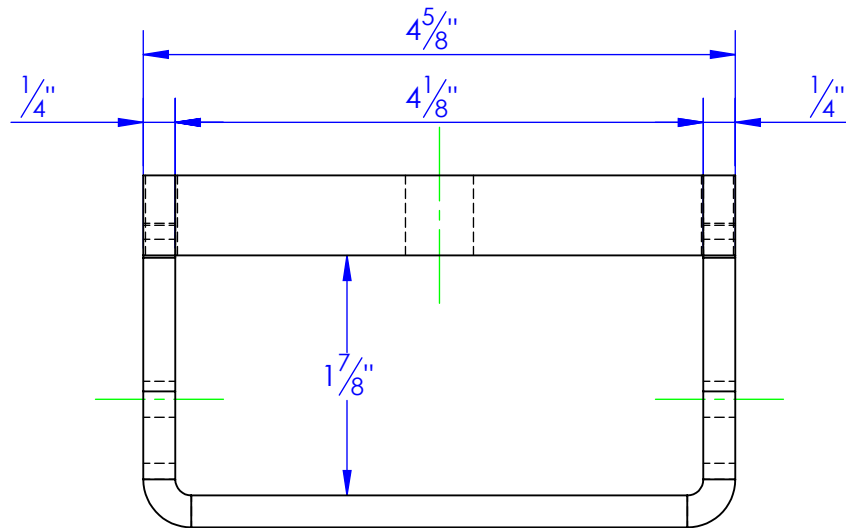


ITEM NO.	PART NUMBER	DESCRIPTION	MATERIAL	DRAWING #	QTY.
1	FP-HFL-542	PUSHER BACK PLATE	5/8" HRS.	40-2304	1
2	FP-HFL-5421	PUSHER FRONT & SIDE PLATE. HFL.	1/4" HRS	40-2308	1

REV.	REVISIONS DESCRIPTION	DATE	APPROVED
A	UPDATED TO NEW STANDARD DWG. FROM HFL-540	2/20/2012	
B	MADE WIDER BY 1/8" TO 4-1/8"	3/19/2012	
C	REPLACED ST-FI 1/4 x 1-1/4 & FP-HFL-541 W/ FP-HFL-5421	8/15/2012	



PROPRIETARY AND CONFIDENTIAL
THE INFORMATION CONTAINED IN THIS
DRAWING IS THE SOLE PROPERTY OF TRIPLE
C INC. ANY REPRODUCTION IN PART OR
AS A WHOLE WITHOUT THE WRITTEN
PERMISSION OF TRIPLE C INC. IS PROHIBITED.

DIMENSIONS ARE IN INCHES
TOLERANCES:
FRACTIONAL $\pm 1/16$
ANGULAR: MACH ± 1 BEND \pm
TWO PLACE DECIMAL ± 0.10
THREE PLACE DECIMAL ± 0.005

MATERIAL ---
DO NOT SCALE DRAWING

NAME	DATE
DRAWN HEATH	1/23/2013
PART #	FP-HFL-540
ASM #	
COMMENTS:	
PUSHER ASSEMBLY	

P.O. BOX 248,
SABETHA, KS 66534

TRIPLE C
INC.

SIZE A	DWG. NO. 40-1302 C	REV. C
SCALE: 1:1.5	WEIGHT: 2.33	SHEET 1 OF 1