

PROSPEAR

BY **HYDRABED**



OWNER'S MANUAL



The Original Flatbed Bale Handler

902 Hwy K246 • P.O. Box 248
Sabetha, KS 66534

(785) 284-3674 • (800) 530-5624
fax (785) 284-3931
website: www.hydrabeds.com

THANK YOU

Thank you for choosing Pro Spear®/HydraBed. It is a sincere privilege to serve North America's farmers and ranchers and an opportunity we take seriously. Our goal is to provide the most rugged and reliable equipment while continuing to build on a legacy of innovative products that solve real ranch problems. We are proud to play an important role not only in the agriculture industry but in the daily lives of the hard working men and women that feed the world.

FEATURES

- Innovative spear locks
- Spring loaded spear storage system
- (2) underbody toolboxes
- 2" diameter machined spears
- 12" of lifting hinge
- E/H power unit + handheld pendant
- $\frac{3}{8}$ " thick rubber mud flaps
- Heavy wall drop hitch
- Recessed 2- $\frac{5}{16}$ " fifth wheel ball
- Full-length side rails
- 6" channel iron main frame
- $\frac{3}{8}$ " thick x 6" tall sides

QUICK SPECS

3 GPM Pump | 2,500 lb. lift capacity at end of spikes | No specific auxiliary provisions; using main hydraulic system for auxiliary NOT RECOMMENDED due to small amount of oil.

SAFETY GUIDELINES

As with any device designed to handle large round bales, some cautions are in order. Keep this manual with your PRO SPEAR at all times. Refer to it regularly.

NEVER exceed the manufacturer's gross vehicle weight or gross weight rating for your vehicle.

NEVER exceed the tire manufacturer's gross weight rating.

NEVER allow yourself or anyone else to go near a bale or any other object that is suspended by any means, hydraulic, mechanical or other.

NEVER increase or decrease the factory relief value setting. This action automatically voids all warranties and, under certain circumstances, could endanger the operator and/or bystanders.

NEVER operate the vehicle and PRO SPEAR on dangerous terrain.

NEVER allow children or other unauthorized personal access to the controls for your PRO SPEAR.

ALWAYS use sound judgement and common sense when operating your vehicle and PRO SPEAR.

ALWAYS attach trailers or equipment only to factory installed gooseneck hitch or rear drop hitch.

ALWAYS respect the weight of the load you are carrying and allow more stopping distance than normally required for an empty truck.

OPERATION

1 | Make certain that the upper surface of the unit is clear.



2 | Utilizing the hand held pendant in the cab of the truck, lower lifting spears to the bottom of their travel by activating the “**Unload**” function on the switch pendant.



3 | Back into the flat side of the bale, piercing the surface until the rear lifting mechanism makes contact with the bale.



4 | To raise the bale activate the “**Load**” function on the switch pendant until bale is resting solidly on the flat surface of the Pro Spear.



5 | To unload bale, reverse the previous steps 1 through 4.

CAUTION: BEFORE RETURNING SPEARS TO THE PERPINDICULAR POSITION, MAKE CERTAIN THAT THERE ARE NO BYSTANDERS NEAR THE PRO SPEAR, ESPECIALLY IN THE AREA WHERE THE REAR LIFTING MECHANISM WILL COME TO REST.

INSTALLATION

PRO SPEAR TO TRUCK CHASSIS

Tools Required:

$\frac{15}{16}$ " wrench, $\frac{15}{16}$ " socket and ratchet or impact wrench, drill with $\frac{5}{8}$ " bit, welder and low-hydrogen rod or wire, combination square, hammer, pry bar, $\frac{7}{16}$ " socket and ratchet, wire pliers, Phillips screwdriver.

Important Safety Notice: Correct any leakage of liquid or vapors from any part of the fuel system before proceeding!

- 1) Completely remove all non-factory additions to frame of truck (fifth wheel, rear hitches, etc).
- 2) Factory frame lengths on all $\frac{3}{4}$ ton trucks are correct for installation of model PSD-200 beds. If truck is not a $\frac{3}{4}$ ton, measure from rear of cab to end of frame. If necessary, cut to the following dimension for the respective PRO SPEAR model:

PS-D100 • 80 inches from cab to end of truck frame

PS-D2X0 • 98 inches from cab to end of truck frame

PS-D3X0 • 107 inches from cab to end of truck frame

PS-D555 • 131 inches from cab to end of truck frame

*No modification required for standard application

- 3) Using $\frac{5}{8}$ "x1- $\frac{3}{4}$ " grade 5 bolts and lock nuts, mount front Level-Lok bed mounting brackets to truck frame approximately 3- $\frac{1}{2}$ " from the rear of the cab. Install remaining Level-Loks at the center and the rear of chassis. Refer to appropriate Level-Lok illustration. Where possible, install nuts to the inside of the frame. Tighten all bolts securely to 120 ft/lbs minimum. Square each Level-Lok bracket.

- 4) Lower PRO SPEAR into position between Level-Loks as far forward as possible without touching cab. The Level-Lok system will automatically level the PRO SPEAR front to rear and side to side.

- 5) Move PRO SPEAR back to a location 1- $\frac{1}{2}$ " to 2- $\frac{1}{4}$ " from cab. Verify that the frame is resting evenly on all 4 corners. Re-check squareness of each Level-Lok with truck and PRO SPEAR frames.

- 6) Ground welder to under side of PRO SPEAR, and weld Level-Loks to 5" channel main frame members of bed.

- 7) Connect PRO SPEAR wiring to truck chassis wiring using corrosion resistant connections.

INSTALLATION OF PRO SPEAR HYDRAULICS

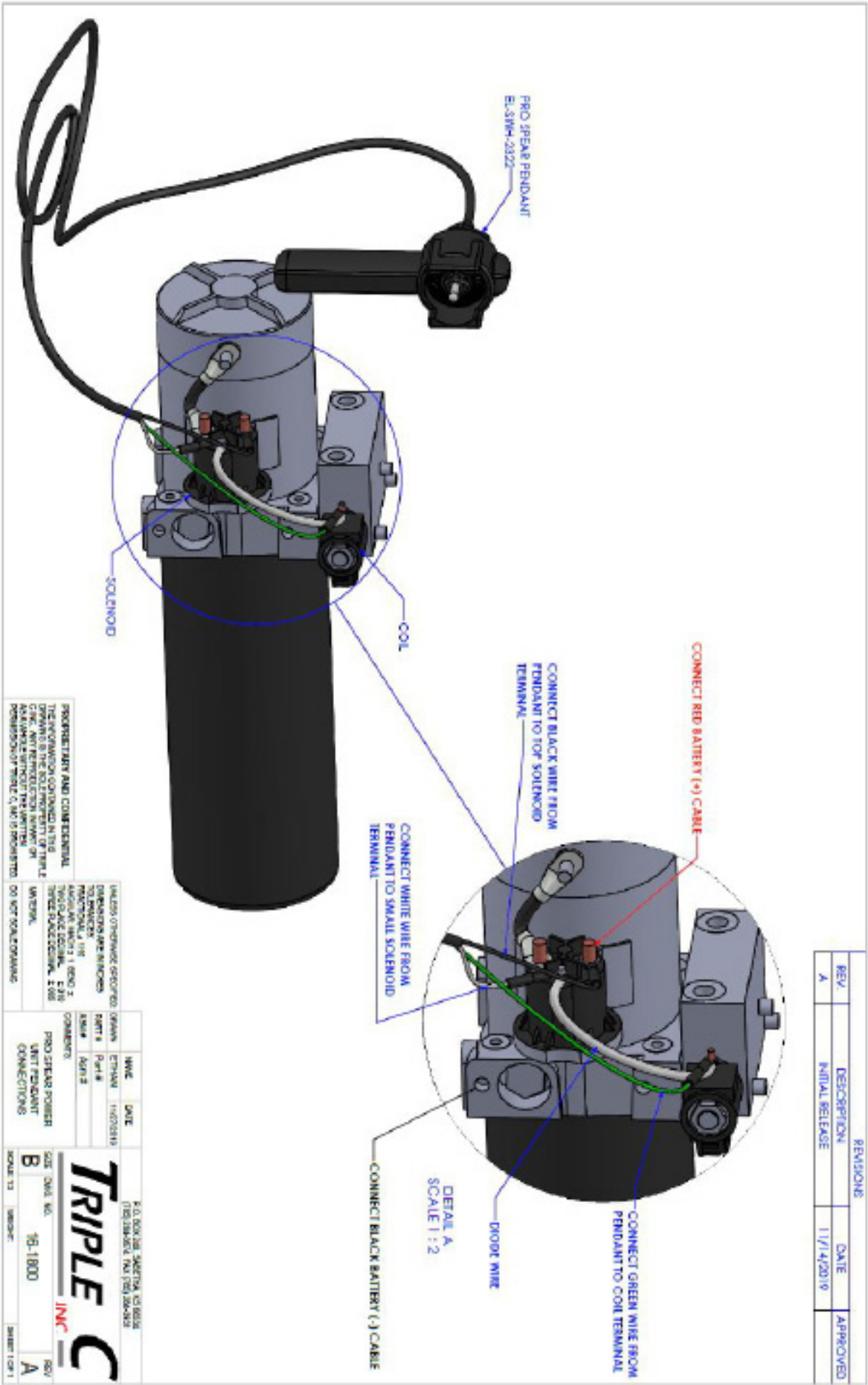
- 1) Mount the hydraulic power pack inside the passenger side underbody toolbox using the two predrilled holes. Secure using two $\frac{3}{8}$ x 1" hex head cap screws and two $\frac{3}{8}$ " lock washers.
- 2) Position the power pack with the oil reservoir toward the truck cab.
- 3) Install the black orifice hydraulic fitting into the valve port marked "DOWN".
- 4) Install the standard straight hydraulic fitting into the valve port marked "UP".
- 5) Install both 90° adapters onto previously installed straight fittings.
- 6) Install rectangular grommet into access hole on rear panel of the underbody toolbox.
- 7) The hose connected to the rod end port on the cylinder is to be attached to the 90° adapter on the straight fitting in the port marked "UP" previously installed on the valve body. Orientation of this adapter should be toward the access hole on the back panel of the toolbox.
- 8) The hose connected to the base end port on the cylinder is to be attached to the 90° adapter on the black orifice fitting in the port marked "DOWN" previously installed on the valve body. Orientation of this adapter should be toward the access hole on the back panel of the toolbox.
- 9) Check that all fittings are tight to avoid leaks upon initial start up.
- 10) Fill oil reservoir using 5 weight hydraulic oil to 1" from the top of the reservoir.

INSTALLATION OF SWITCH MODULE HARNESS

- 1) Create a hole, preferably in an existing "pass through" at the back of the cab or in the floor. When drilling through to floor of the cab make certain to avoid any wire harness in or outside the cab.
- 2) Starting in the cab, route the wire harness back to the passenger side toolbox.
- 3) Tie up the harness to the frame of the truck.
- 4) The black wire will connect to the top post of the solenoid along with the positive cable from the truck battery (See pg 6 for wiring diagram).
- 5) The white wire will connect to the center (smaller) post on the solenoid.
- 6) The green wire will connect to the post on the coil.
- 7) Connect the ground cable to the $\frac{3}{8}$ " tapped hole on the power pack.
- 8) Connect the other end of the ground cable directly to the negative terminal of the truck battery.

INITIAL START UP PROCEDURE

- 1) Lower rear lifting mechanism to the end of its travel and raise it back up to perpendicular. Repeat this step several times.
- 2) Inspect hoses and adapters for leaks.
- 3) Refill oil reservoir to within 1" of the top.



TRIPLE C LIMITED WARRANTY

1 What do I need to do to be covered?

You must properly complete and return the warranty card found at the front of the Owners Manual.

2 What does this Warranty cover?

Triple C will warranty the HYDRABED®, ProSpear, HydraFeeder, Post Hole Digger, Across Bed Toolbox, and Dump Box to be free from defects in material and workmanship when properly installed and operated under normal conditions.

3 What does this Warranty not cover?

The warranty does not cover equipment that has been damaged by:

- Misuse (including operation above its rated capacity), abuse, or accident;
- Failure to follow the operating instructions or maintenance protocols that we provided (including failure to regularly lubricate equipment);
- Any improper or unauthorized installation, repair or modification to the equipment; or
- Fire, flood, "acts of God", or other contingencies beyond our control.

4 How long does the coverage last?

The warranty period for structural components -- for example, the frame, welds, hinges and arms -- lasts for **5 years** after purchase date. The warranty period for system components -- for example, the valves, pumps, controls, and motors -- lasts for **2 years** after the purchase date. The warranty period for the 30 Series HYDRABED® bale lifting arms lasts for the **lifetime of the product**.

5 What will Triple C do to correct problems?

Triple C may repair or replace the equipment covered by this warranty at no charge.

6 How do you get service?

6.1 If something goes wrong with your equipment, call your Dealer or Triple C. Your Dealer or Triple C will ask for the equipment's serial number and a description of the problem. Triple C will determine (1) whether the equipment is within the warranty period and (2) whether to repair or replace the equipment.

6.2 If we determine the problem can be resolved by providing a replacement part, Triple C may deliver the part to you or to the Dealer. If the part is sent directly to the end user, Triple C will require prepayment of the retail price of the replacement part and applicable shipping costs. Triple C will also send instructions for returning the replaced part.

6.3 If we determine the problem requires service, your Dealer or Triple C will schedule a service appointment at a mutually convenient time at no charge.

6.4 If you follow the return instructions, Triple C will refund any prepayment for the part and shipping. However, you will not be refunded if (1) you fail to return the part as instructed, (2) we determine that the equipment is not covered under this warranty, or (3) we determine that the problem was due to one of the disqualifying causes in Section 3.

7 What will Triple C not do?

Triple C will not be liable for any amount that exceeds the amount you paid for the equipment. However arising, we will not be liable for:

- Expenses incurred without our written authorization;
- Direct, indirect, incidental or consequential damages, such as the loss of anticipated profits or benefits; or
- Loss or damage of any material used with the equipment.

We make no warranty of merchantability or fitness for a particular purpose.

8 How does state law relate to this Warranty?

This warranty gives you specific legal rights. You may also have other rights, which vary from state to state.