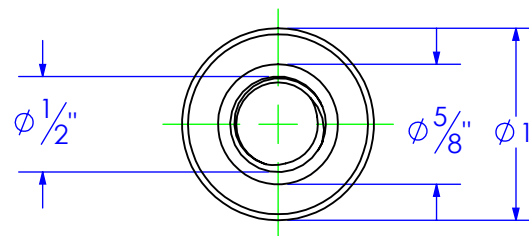
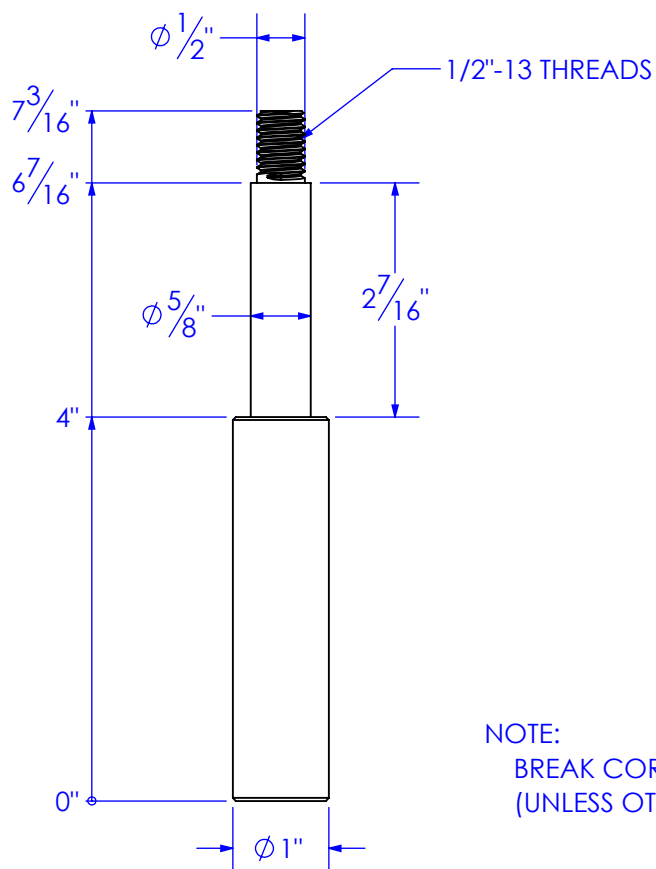


PART NUMBER	DESCRIPTION	MATERIAL
FP-HF8-IDLER HNDL	HANDLE, IDLER, HYDRAFIGURE 8	ASTM A36 Steel

REVISIONS			
REV.	DESCRIPTION	DATE	APPROVED
A	INITIAL RELEASE	12/13/2019	




NOTE:
BREAK CORNERS 1/32 X 45°
(UNLESS OTHERWISE SPECIFIED)

PROPRIETARY AND CONFIDENTIAL
THE INFORMATION CONTAINED IN THIS
DRAWING IS THE SOLE PROPERTY OF TRIPLE
C INC. ANY REPRODUCTION IN PART OR
AS A WHOLE WITHOUT THE WRITTEN
PERMISSION OF TRIPLE C, INC IS PROHIBITED.

UNLESS OTHERWISE SPECIFIED:
DIMENSIONS ARE IN INCHES
TOLERANCES:
FRACTIONAL $\pm 1/16$
ANGULAR: MACH ± 1 BEND \pm
TWO PLACE DECIMAL $\pm .010$
THREE PLACE DECIMAL $\pm .005$

MATERIAL ASTM A36 Steel

DO NOT SCALE DRAWING

	NAME	DATE	P.O. BOX 248, SABETHA, KS 66534 (785) 284-3674 FAX (785) 284-3931		
DRAWN	ETHAN	12/13/2019			
PART #	FP-HF8-IDLER HNDL				
ASM #	Asm #				
COMMENTS:					
HANDLE, IDLER, HYDRA FIGURE 8			SIZE	DWG. NO.	REV
			A	12-2488-12	A
			SCALE: 1:2	WEIGHT: 1.14	SHEET 1 OF 1

REV
A