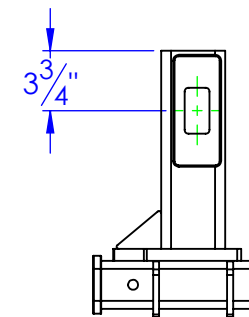
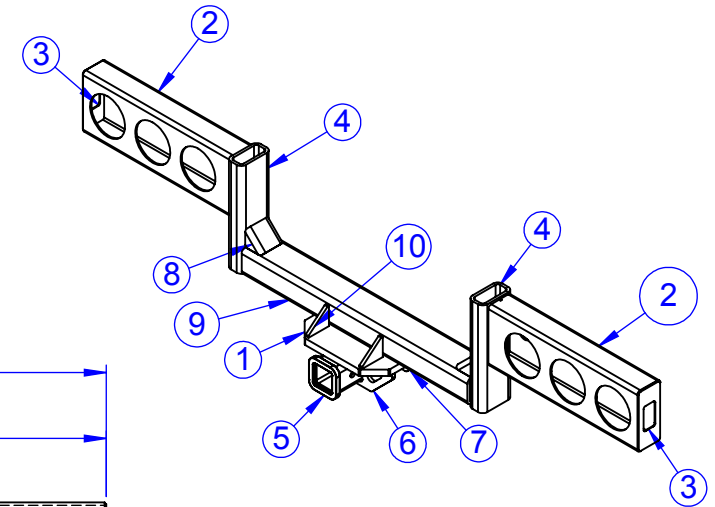
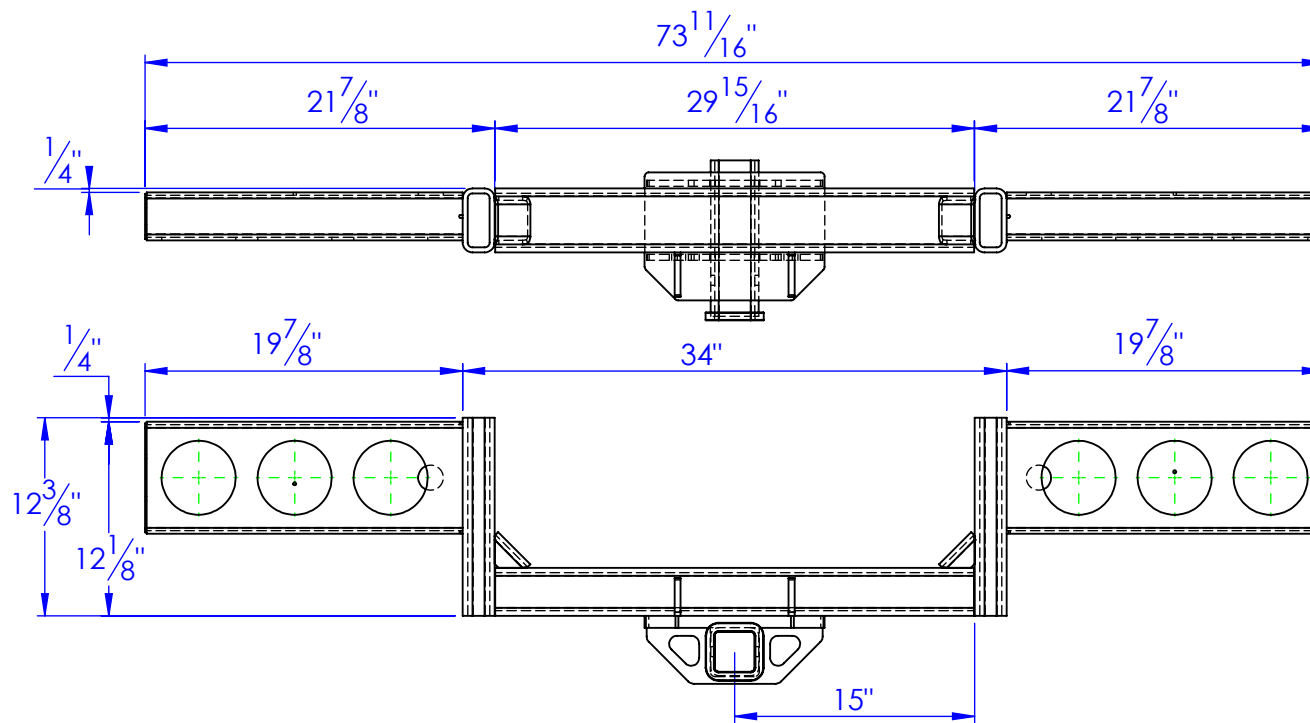


| ITEM NO. | PART NUMBER | DESCRIPTION | MATERIAL | DRAWING # | QTY. |
|----------|----------------------------|--|----------------------------|-----------|------|
| 1 | FP-HPXO-100 | APEX, FB, HB, PS, HITCH PLATE | 3/4" HRS. | 10-2600 | 1 |
| 2 | FP-RT-LH2044 | TAIL LIGHT HOUSING, TUBING THREE HOLE | TUBING 7x3x3/16" L:19-3/4" | 10-2606 | 2 |
| 3 | FP-SM-LH2044B | END CAP, TAIL LIGHT HOUSING | 12ga HRS | 10-2601 | 2 |
| 4 | RT 4x2x.3125 L 12.375 | LENGTH 12-3/8 | RT 4 x 2 x 5/16 | STOCK | 2 |
| 5 | HD-RT-RB2.5x10 | RECEIVER TUBE, 2.5IDx12 | PURCHASED | PURCHASED | 1 |
| 6 | FP-RL2-103 | GUSSET W/ CHAIN SLOTS, RECIEVER HITCH, BOLT-ON, REEL LIFT | 3/8" HRS. | 90-2904 | 1 |
| 7 | FP-RL2-104 | GUSSET W/O CHAIN SLOTS, RECIEVER HITCH, BOLT-ON, REEL LIFT | 3/8" HRS. | 90-2905 | 1 |
| 8 | FP-RL-DHGST | DROP HITCH GUSSET, REEL LIFT | 1/4" HRS | 12-2601 | 2 |
| 9 | RT 4 x 3 x .3125 L 29.9375 | LENGTH: 29-15/16" | RT 4 x 3 x 5/16 | STOCK | 1 |
| 10 | FP-RL-REC GUSSET | RECEIVER GUSSET, REEL LIFT | 3/8" HRS | 12-2603 | 2 |

| REVISIONS | | | |
|-----------|-------------------|-----------|----------|
| REV. | DESCRIPTION | DATE | APPROVED |
| A | INITIAL RELEASE | 3/7/2017 | |
| B | CHANGE CROSS TUBE | 2/28/2019 | |



PROPRIETARY AND CONFIDENTIAL
THE INFORMATION CONTAINED IN THIS DRAWING IS THE SOLE PROPERTY OF TRIPLE C INC. ANY REPRODUCTION IN PART OR AS A WHOLE WITHOUT THE WRITTEN PERMISSION OF TRIPLE C INC. IS PROHIBITED.

| | |
|---|----|
| DIMENSIONS ARE IN INCHES TOLERANCES: FRACTIONAL $\pm 1/16$ ANGULAR: MACH ± 1 BEND \pm TWO PLACE DECIMAL ± 0.10 THREE PLACE DECIMAL ± 0.005 | |
| MATERIAL | -- |
| DO NOT SCALE DRAWING | |

| | |
|--------------------------|------------------|
| NAME | DATE |
| DRAWN | ETHAN 3/7/17 |
| PART # | |
| ASM # | SUB-RL-DROPHITCH |
| COMMENTS: | |
| REAR DROP HITCH WELDMENT | |

P.O. BOX 248,
SABETHA, KS 66534

TRIPLE C
INC.

| | | |
|-------------|---------------------|--------------|
| SIZE | DWG. NO. | REV. |
| A | 12-1600 B | B |
| SCALE: 1:12 | WEIGHT: 121.59 LBS. | SHEET 1 OF 1 |