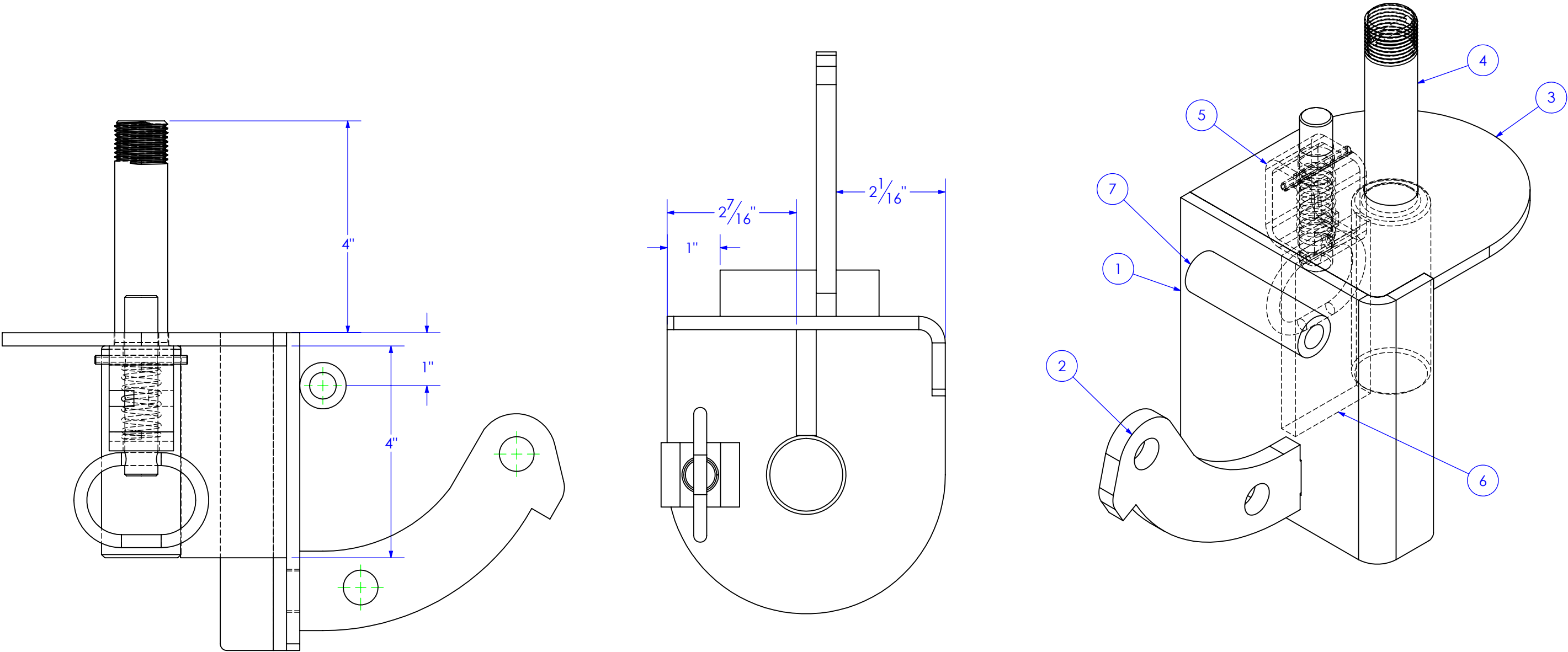


| ITEM NO. | PART NUMBER | DESCRIPTION | MATERIAL | DRAWING # | QTY. |
|----------|----------------------|---|------------|------------|------|
| 1 | FP-HF8-BASE PLT PIV | PIVOT, BASE PLATE, HYDRA FIGURE 8 | 1/4" HRS | 12-2488-1 | 1 |
| 2 | FP-HF8-PIN LATCH TAB | TAB, PIN LATCH, HYDRA FIGURE 8 | 3/8" HRS | 12-2491 | 1 |
| 3 | FP-HF8-MTR PIV | PLATE, PIVOT, MOTOR MOUNT, HYDRA FIGURE 8 | 1/4" HRS | 12-2488-10 | 1 |
| 4 | FP-HF8-PIV SPNDL | SPINDLE, PIVOT, HYDRAFIGURE 8 | 1018 STEEL | STOCK | 1 |
| 5 | HD-SPRNG LTCH | WELD ON SPRING LATCH | | STOCK | 1 |
| 6 | FI-.375x2xL4 | LENGTH: 4" | FI-.375x2 | STOCK | 1 |
| 7 | BU-.875x.5 L 3 | BUSHING, 7/8x1/2 L 3" | - | STOCK | 1 |

| REVISIONS | | | |
|-----------|-----------------|------------|----------|
| REV. | DESCRIPTION | DATE | APPROVED |
| A | INITIAL RELEASE | 12/11/2019 | |



PROPRIETARY AND CONFIDENTIAL
THE INFORMATION CONTAINED IN THIS
DRAWING IS THE SOLE PROPERTY OF TRIPLE
C INC. ANY REPRODUCTION IN PART OR
AS A WHOLE WITHOUT THE WRITTEN
PERMISSION OF TRIPLE C, INC IS PROHIBITED.

UNLESS OTHERWISE SPECIFIED:
DIMENSIONS ARE IN INCHES
TOLERANCES:
FRACTIONAL $\pm 1/16$
ANGULAR: MACH ± 1 BEND \pm
TWO PLACE DECIMAL ± 010
THREE PLACE DECIMAL ± 005
MATERIAL
DO NOT SCALE DRAWING

| | | | | |
|------------|---------------------|-----------|--|--|
| | NAME | DATE | P.O. BOX 248, SABETHA, KS 66534 (785) 284-3674 FAX (785) 284-3931 | |
| DRAWN | ETHAN | 1/16/2020 | TRIPLE C INC | |
| PART # | Part # | | | |
| ASM # | SUB-HF8-MTR MNT PIV | | | |
| COMMENTS: | | | PIVOT, MOTOR MOUNT, HYDRA FIGURE 8 | |
| SIZE | DWG. NO. | | REV | |
| B | 12-1416 | | A | |
| SCALE: 1:4 | WEIGHT: 10.06 | | SHEET 1 OF 1 | |