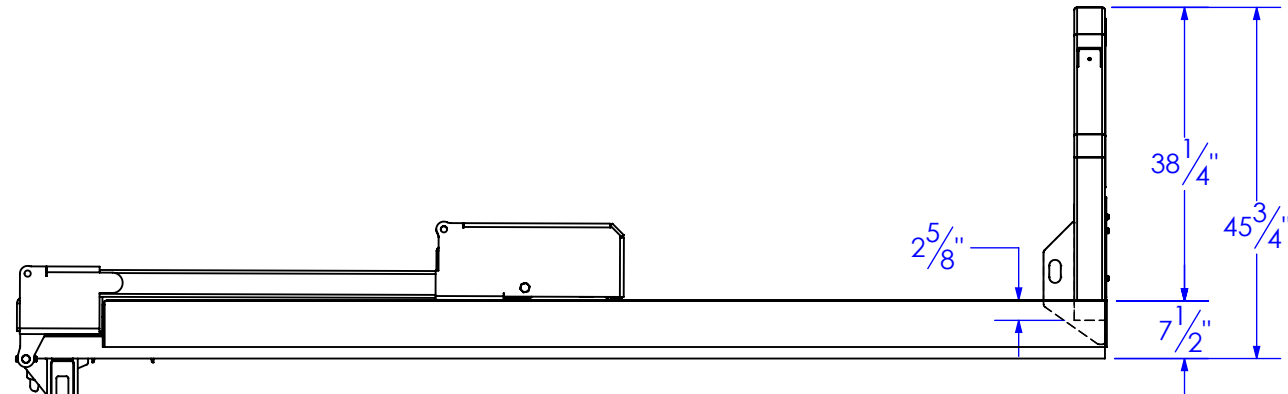
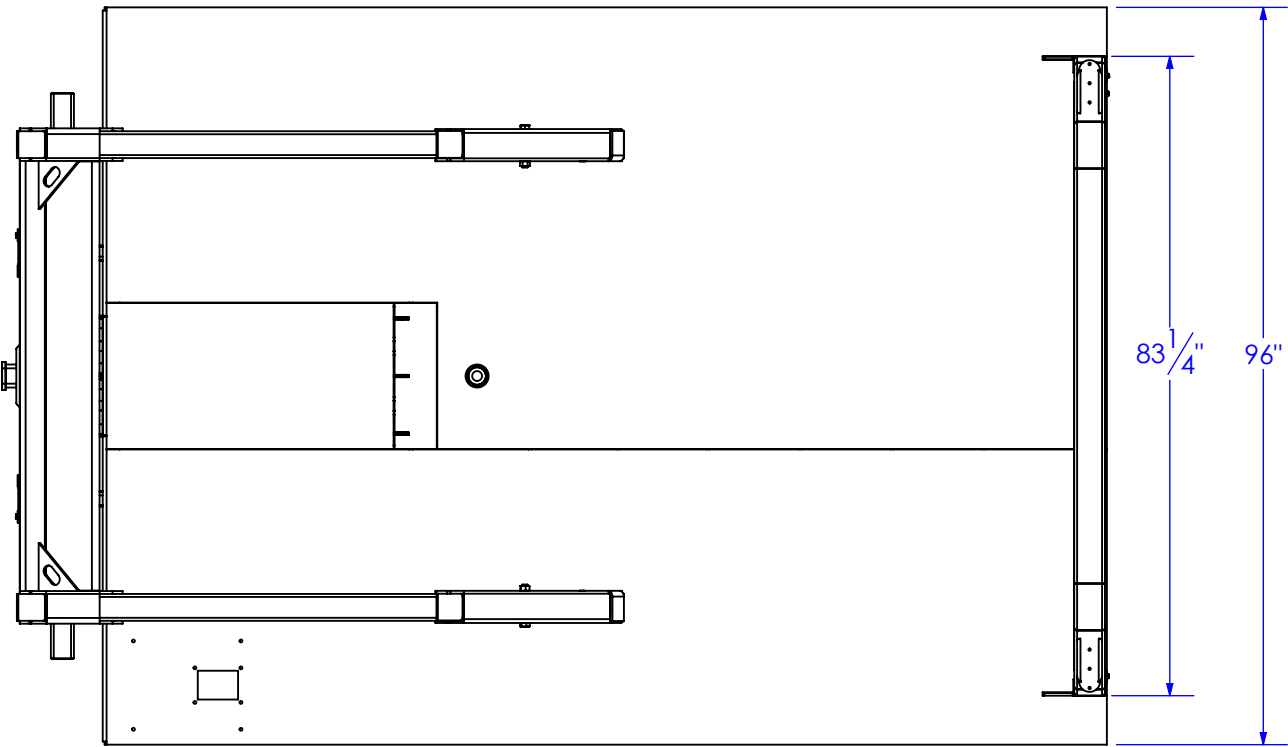
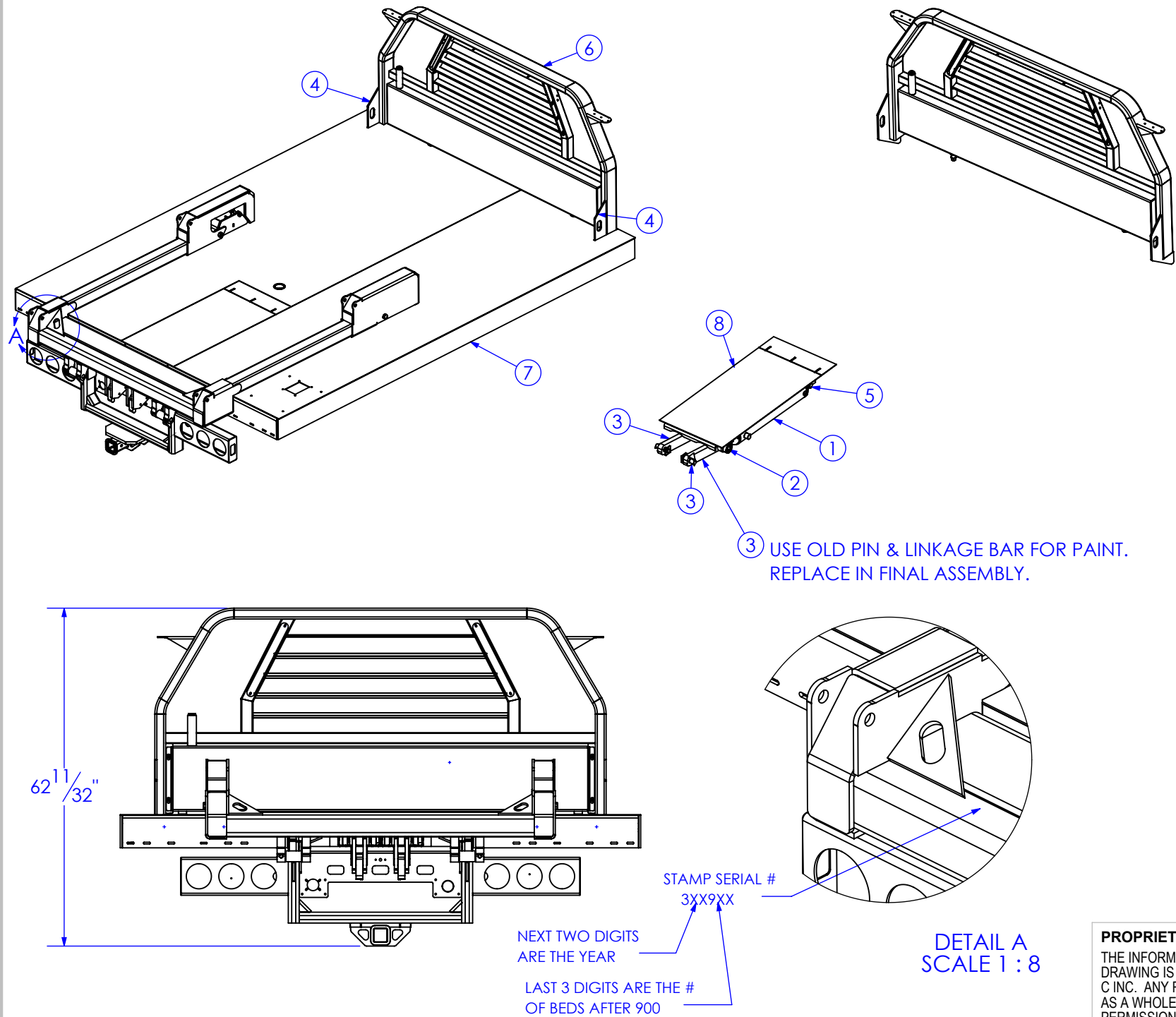


ITEM NO.	PART NUMBER	DESCRIPTION	DRAWING #	QTY.
1	CY-CA450-ML	MAINLIFT CYLINDER CARLSON	STOCK	2
2	RE-PN-1X600	PIN, BEARING, HYDRA BED	10-1706	2
3	RE-LB-125	LINKAGE BAR (1-1/4")	10-1702	2
4	FP-HR-RLGST	GUSSET, HEADACHE RACK, REEL LIFT	12-2301	2
5	RE-PN-1x350	BASE PIN, MAIN LIFT CYLINDER, HB	10-1704	2
6	SUB-HR RL 3XX0	HEADACHE RACK, REEL LIFT, 3350, 3550 WLDMT	12-1301	1
7	SUB FF-RL-555	FLOOR FRAME REEL LIFT 550, WLDMT	12-1201	1
8	FP-CLYLINDER DOOR WLDMT RL PULLRITE	CYLINDER DOOR WELDMENT, REEL LIFT	12-1203	1
9	RE-PN-1X300	MAIN LINKAGE REAR PIN	10-1703	2

REVISIONS			
REV.	DESCRIPTION	DATE	APPROVED
A	INITIAL RELEASE	11/27/2017	



PROPRIETARY AND CONFIDENTIAL
THE INFORMATION CONTAINED IN THIS
DRAWING IS THE SOLE PROPERTY OF TRIPLE
C INC. ANY REPRODUCTION IN PART OR
AS A WHOLE WITHOUT THE WRITTEN
PERMISSION OF TRIPLE C, INC IS PROHIBITED.

UNLESS OTHERWISE SPECIFIED:
DIMENSIONS ARE IN INCHES
TOLERANCES:
FRACTIONAL ± 1/16
ANGULAR: MACH ± 1 BEND ±
TWO PLACE DECIMAL ± 010
THREE PLACE DECIMAL ± 005

MATERIAL

DO NOT SCALE DRAWING

NAME	DATE
ETHAN	3/22/2018
PART #	Part #
ASM #	SUB-RL-3549
COMMENTS:	
REEL LIFT 3550 BARE, PRE-PAINT	

P.O. BOX 248, SABETHA, KS 66534 (785) 284-3674 FAX (785) 284-3931	
SIZE	DWG. NO.
B	12-0551
SCALE: 1:48	WEIGHT:
SHEET 1 OF 1	