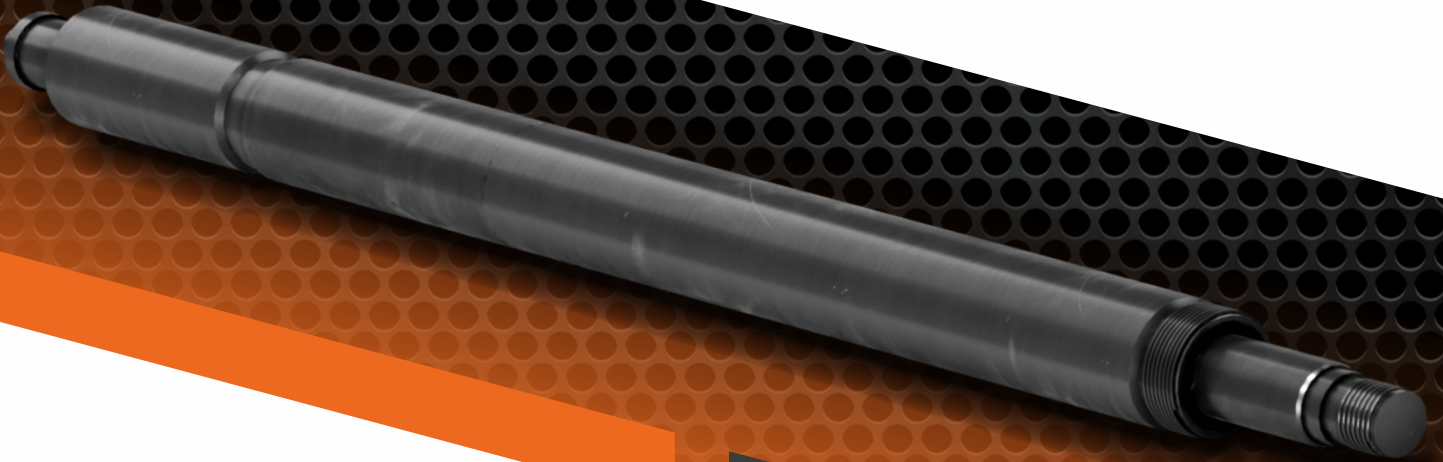


# RAZORBOSS

## PLUG & PLAY

IT ALL STARTS HERE



### INTRODUCTION

RAZORBOSS is a unique, non-explosive / non lithium downhole linear force generator capable of delivering from 15,000 to 120,000 lbs of force envelope dependent on the tool size required for the application. RAZOR Oiltools RAZORBOSS Plug & Play platform enables a suite of add on tools that can set permanent or retrievable bridge plugs, packers or straddles, punch tubing or casing, fish stuck objects or stroke valves, centralise or dimple tubing, chase down and pinpoint leak locations in tubing as well as cutting the tubing completely.

The force generator operates via the RAZOR Control Module (RCM) ensuring quality elastomer sealing and anchoring, precision stroking etc. of the deployed tool. Once the RAZORBOSS is activated, the deployed add on does its job and the system is pulled from the well, the RAZOR Control Module is changed, the tool is reset in a matter of minutes and is ready to be run again immediately, no redress, no cleaning.

The RAZOR Control Module is a disposable alkaline battery pack for power requirements, which delivers a single setting operation per pack. Additionally, the tool electronics are integrated into the RCM and therefore are also changed every run which helps maintain service quality by eliminating a potential fatigue failure point. The alkaline pack is easy to handle, easy to transport, recyclable and is wellsite safe.

RAZORBOSS can be run in real time or memory mode and is suitable for use with all conveyance methods including mechanical slickline, realtime slickline, electric line, coiled tubing, sucker rod or jointed work string. RAZORBOSS records voltage, current, status, time and temperature for quality-assurance purposes and provides a service signature verification for each run.

### FEATURES & BENEFITS

- Non-Explosive/Non-Lithium which improves safety, handling and logistics
- Plug & Play functionality and simplicity
- Quality setting of downhole devices via controlled setting speeds
- Short, light weight design aids in mobilization via winged aircraft or helicopter
- Ideal for operations with limited rig up height i.e. rig-less operations
- Cost-effective multipurpose tool platform
- Tool can be activated in real time or memory mode
- Tool electronics are changed each run ensuring quality and reliability
- High temperature tool qualified to 437°F for 6 hours



# RAZORBOSS

[www.razoroiltools.com](http://www.razoroiltools.com)

© 2024 RAZOR - All Rights Reserved

RAZOR HQ: UNITS 1 & 2, BURNSIDE INDUSTRIAL ESTATE  
WELLHEADS ROAD, DYCE, ABERDEEN AB21 7HG

## SPECIFICATIONS

OUTSIDE DIAMETER	1.688"	2.125"	2.720"	3.600"	4.100"
TOOL LENGTH	5.81 ft / 1.770 mtr	4.20 ft / 1.280 mtr	4.59 ft / 1.399 mtr	4.59 ft / 1.240 mtr	5.93 ft / 1.807 mtr
TOOL WEIGHT	29.10 lbs / 13.20 kgs	34.20 lbs / 15.51 kgs	66.20 lbs / 30.03 kgs	108.00 lbs / 48.99 kgs	190.7 lbs / 86.50 kgs
STROKE LENGTH	6.00"	10.00" or 16.00"	10.00"	10.00"	12.75"
STROKE SPEED / FULL STROKE	18 minutes	17 minutes	16 minutes	18 minutes	28 minutes
CALCULATED MINIMUM	25,000 lbs	25,000 lbs	25,000 lbs	25,000 lbs	25,000 lbs
FISH NECK	1.375"	1.750"	2.313"	2.313"	2.313"
NOMINAL FORCE	15,000 lbs	30,000 lbs	40,000 lbs	60,000 lbs	120,000 lbs
MAXIMUM FORCE	20,000 lbs	40,000 lbs	50,000 lbs	90,000 lbs	150,000 lbs
MAX OPERATING PRESSURE	15,000 psi	15,000 psi	15,000 psi	15,000 psi	15,000 psi
STANDARD TEMP	275°F for 6 hours	275°F for 6 hours	275°F for 6 hours	275°F for 6 hours	275°F for 6 hours
HI TEMP (RAZORHEAT)	437°F for 6 hours	437°F for 6 hours	437°F for 6 hours	437°F for 6 hours	437°F for 6 hours
TOP CONNECTION SLICKLINE	15/16" Sucker Rod	1 1/16" Sucker Rod	1 1/16" Sucker Rod	1 1/16" Sucker Rod	1 1/16" Sucker Rod
TOP CONNECTION ELINE	1 3/16" GO	1 3/16" GO	1 3/16" GO	1 3/16" GO	1 3/16" GO
BOTTOM CONNECTION	1.25" x 16 UN Box Baker 5	2" 10 Stub Acme Pin 2.125" Owen MSST	2.5" 6 Reg Acme Pin Baker 10	3.5" 6 Reg Acme Pin Baker 20	3.675" 6 Reg Acme Pin
SLICK ROD CONNECTION	0.625" x 18 UN Box Baker 5	11/16" - UN 16 Box 2.125" Owen MSST	1" - UN 8 Box Baker 10	2" 6 Reg Acme Pin Baker 20	2.05" x 6 Stub Acme Pin









## RAZORBOSS

### Additional Information and Tools

1.688"	6", 10" and 12.75" Stroke tools - Available
2.125"	10" and 16" Stroke tools - Available
2.720"	10" and 16" Stroke tools - Available
2.720"	5.5" Stroke, 3 minute stroke time, Available * For Plug & Perf operations - Available
3.600"	10" Stroke tools - Available
4.100"	12.75" Stroke tools - Available

Note: Larger OD Higher Force tools available on request.  
Longer stroke tools available on request.  
Chrome and Inconel tools available on request.

### BY ADDING THE RAZORBOSS PLUG & PLAY ADAPTER, THE FOLLOWING APPLICATIONS CAN BE ACHIEVED

-  RAZORSET Adapter - Plug, straddle, patch setting
-  RAZORPUNCH Adapter - Tubing Punch with debris
-  RAZORBLADE Adapter - Tubing Punch without Debris
-  RAZORRAM Adaptor - Fishing / Stroking / Compression
-  RAZORWIRE Adapter - Sidewall Wire Cutter
-  RAZOR RPLUG - Compact Retrievable Bridge Plug
-  RAZORBOSS + RAZORSET + RAZORBLADE - Plug & Punch in a single run
-  RAZORBOSS + BLADE + CUT = Punch & CUT in a single run

