



George and Terri Litchfield

THE LITCHFIELD GAZETTE



Sundance Corp. Center
835 N. Highland Springs Ave.
Suite 305
Beaumont, Ca 92223

Office: 951-769-0005
Website: litchfieldins.com
Info@litchfieldins.com

MEDICARE ANNUAL ENROLLMENT PERIOD OCTOBER 15 - DECEMBER 7



**IMPORTANT
ANNOUNCEMENT
FROM GEORGE**

We are changing our Newsletter format. Previously we sent out the Litchfield Gazette 4 times a year by mail. But with the recent changes we have all experienced, email has become a much more viable way to reach our clients. We now email our Gazette-Lite Newsletter 10 times a year. We will continue to mail out our Litchfield Gazette twice a year. The Gazette-Lite Newsletter will keep you updated with information that we believe will be helpful to you. If you have not received our newsletter, please contact us.

Thank you

Someone once told me...

Change is inevitable but Growth is Optional With Medicare Plans, changes happen annually. Thankfully, this year most changes will be positive. Because my Dad taught me to work hard and be diligent, we have chosen to Grow! Part of this growth is opening our new office and hiring a full time Client Support Specialist who is also our office manager, Cherie. Many of you have already had the pleasure of speaking with her on the phone or meeting her in person. We encourage you to call for an appointment to **come in for your Annual Medicare Plan Review**. You can either attend one of our many Member Meetings or schedule a one-on-one Medicare Review with me.

In this edition, I would like to review some of the 2023 benefit changes that you will find in a few of the most common Medicare Plans offered in the Inland Empire.

Our Mission is to provide the very Best Service possible to our clients and to meet new friends who are looking for assistance in obtaining a Medicare Plan. It is our Joy to be your Agent/Advisor. We appreciate your referrals to those who are turning 65 or who are new to Medicare. We also provide assistance to those who need help enrolling into Medicare.



**UNITED HEALTHCARE FOCUS: 2023**

New UCard accepted at many merchants that will include over-the-counter (OTC) allowances. Dental and Vision allowances, Health Credits.

OTC: \$75 Quarterly - was \$50

Vision Allowance: \$300 annually - was every other year

***UHC is offering a \$0 premium PPO Plan with broad national coverage**

(98% of UHC providers will accept)

***UHC is offering a \$50 Part B Give Back Plan**

SCAN CLASSIC PLAN: 2023

OTC: \$75 Quarterly - was \$50

Vision Allowance: \$250 annually - was every other year

Chiropractic and Acupuncture: Now \$0 Copay - 30 visits

More Returning to Home Hours too!

SCAN VENTURE PLAN: 2023

Still a strong plan BUT with 3 downgrades

Part B Give Back: \$100 a month - was \$125 a month

OTC: \$65 - was \$100

Maximum out of Pocket: \$1,900 - was \$1,400

AETNA PLUS PLAN:

OTC: \$105 Quarterly - was \$75 and a new feature, the money will be loaded on a card you can use at many merchants

Dental: \$2,000 allowance and you can go to any licensed dentist - Same as last year

BRAND NEW DAY:

Part B Give Back: \$150

This carrier is accepted at many medical groups BUT not Beaver or Loma Linda

Inter Valley Health Plan is exiting the Market at the end of 2022...if you or someone you know has IVHP please call our office and schedule an appointment.

These are just some HIGHLIGHTS...If I didn't mention your plan, please call and we are happy to update you. We are here to make sure you are in the Right Plan for You! If you are happy with your Plan, great, it will automatically renew with the new changes on January 1, 2023. If you aren't sure or know you want to make a change PLEASE call our office at 951-769-0005 and schedule your review. We would love to see you and we have a Gift Bag for you...bring a friend and we have an additional Gift for you! Terri and I appreciate you and thank you from the bottom of our hearts for your Business and your Referrals... Have a Wonderful and Blessed Holiday Season and we hope to see you soon. Sincerely,



Attention Please!

Watch out for SCAMMERS!

In today's crazy world the opportunity to take advantage of people is worse than ever. If you are getting calls asking you about your Medicare, please don't give out any information. Legitimate Medicare agents will not contact you by phone to solicit your business. If you have an agent who assisted in enrolling you into Medicare, they can contact you and hopefully you know who your agent is. Our team at Litchfield insurance care about the safety of our clients. Please call us if you are not sure if the call you are getting is legitimate.

KQLH 92.5 FM is a locally powered grassroots radio station from Yucaipa, Ca. KQLH airs an eclectic mix of the "Music of America's Mainstreet." From the era of the 40's, 50's, 60, 70's and beyond! From Big Band Music to Classic Rock



WE ARE ON THE RADIO !

THE LITCHFIELD FAMILY CORNER



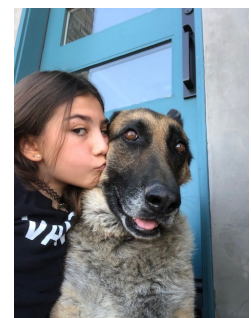
Being a Papa is Awesome!



Grandma with Colton



Papa with his girls



Layna and Cali Girl



Big Fish Catch - Cabo



Touring Zion National Park



Aloha From Hawaii



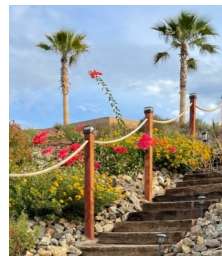
Litchfield Hills Wedding Venue



Keeping an eye out for Elvis



Yellowstone Icon



Shooting for the Stars at Litchfield Hills



King doing his thing

Visit our website at: www.litchfieldins.com





IMPORTANT INFORMATION

LICENSED TO PROVIDE ASSISTANCE IN:

Arizona	New Jersey
Arkansas	North Carolina
California	Ohio
Georgia	Oregon
Idaho	South Carolina
Indiana	Tennessee
Iowa	Texas
Kentucky	Utah
Montana	Washington
Nevada	

****Other States added as needed****

Did you know that If you move out of the State or the County where your Medicare Plan was written you need a new Medicare Plan? We can assist you with getting a Medicare Plan that is available in your New Service Area.



From the Desk of Cherie

Just a note to remind you that I am here to help you. My role is Client Support Specialist and I take your concerns seriously. If you need help enrolling into Medicare, I can help. If you are having trouble with your Medicare Plan your best option is to reach out to your plans Member Service department, but if you still are having issues please call me and I'll work for you to help resolve the situation. I'm also your resource for additional contact information you might need or to answer questions. I look forward to helping you as the need arises.

Cherie Bolyarde



www.litchfieldins.com



CONTACT NUMBERS & WEBSITES

Social Security	www.ssa.gov
National	800-772-1213
San Bernardino	866-331-713
Moreno Valley	888-590-2705
Palm Springs	877-873-9105
Hemet	855-207-7083
Fontana	866-726-7865
Medicare - CMS	medicare.gov
	800-633-4227
Medi-Cal Eligibility	www.dhcs.ca.gov
Riverside County	877-410-8827
	https://rivcodpss.org/health-care-coverage
San Bernardino County	877-410-8829
	https://wp.sbcounty.gov/tad/programs/medi-cal/
Orange County	855-541-5411
	https://ssa.ocgov.com/health/
Los Angeles County	866-613-3777
	https://dpss.lacounty.gov/en/health.html

Our Medicare Partners

AARP | Medicare Plans
from **UnitedHealthcare**
brand new day
HEALTHCARE YOU CAN FEEL GOOD ABOUT

scan HEALTH PLAN

Anthem BlueCross

WellCare Health Plans

Alignment Healthcare

blue of california

Humana **aetna** medicare solutions

And Medicare Supplement Plans