



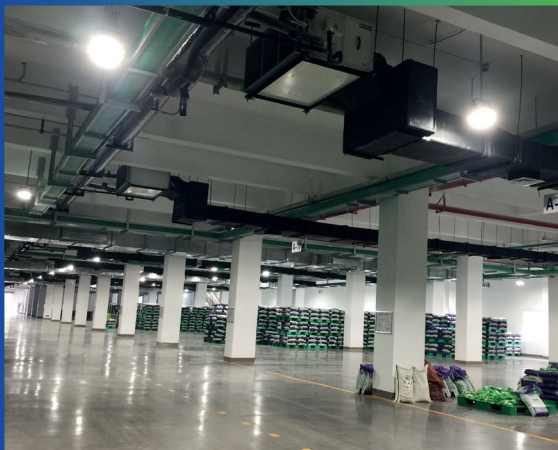
www.cool-tech.co.uk

CoolTech LED Lighting

Eliminate Maintenance Costs
Improve Productivity
Increase Visibility

Intelligent Technologies for a Cleaner, Greener Environment

COOL
TECHNOLOGY
Technologies for the Environment



Eliminate Your Lighting Maintenance Costs

Whilst improving your productivity and visibility with an LED system designed, implemented and maintained by CoolTech.

If you're like one of the hundreds of facility managers with legacy lighting solutions, hungry for energy and utilising older technology ranging from vacuum fluorescent tubes to discharge type glass bulbs – you could be experiencing productivity and maintenance cost issues the moment there's a failure.

CoolTech provides you with an LED lighting solution that's more than simply swapping-out of replacement lamps. Our approach starts with the full analysis of your commercial lighting needs at an operational level.

By utilising our engineering expertise throughout every discipline, you receive a lighting solution that is not only constructed to reduce your costs but will also improve visibility and require less maintenance.

Our product warranties ensure you receive a replacement for any failure over a 5 year period.

Our on-site warranty means we perform the replacement plus re-install at our own cost providing excellent cover for your building.

Book a consultation today – and discover the difference CoolTech makes to your lighting

Problem Solving Engineering

It's about providing our customers with a complete solution. Our company philosophy is simple. We solve customer problems.

Work with a company that solves the legacy problems of your lighting, delivering an efficient solution that conquers your long-standing challenges.

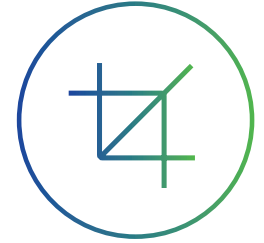
If your site exceeds your agreed energy tariff quota there will now be heavy penalties. This initiative has been implemented under new government legislation to reduce carbon emissions.

Whatever your goal is for your lighting, from improving visibility throughout your workspace to eliminating maintenance costs, CoolTech gives you the perfect lighting system.

With CoolTech the power is in the flexibility to deliver solutions that are shaped around your building.

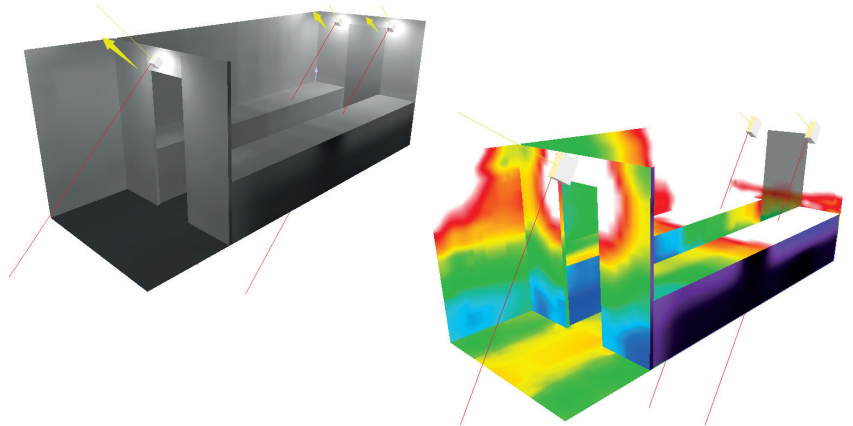
To achieve an exceptional result for all of our clients we use a five-stage system created to deliver your building's new lighting solution.

Covering the life-cycle of your new lighting, this is a proven process that ensures you won't be worrying about your lights for many years to come...



Scientific, Data Driven Light Placement

Simulation ensures you receive the optimal solution.



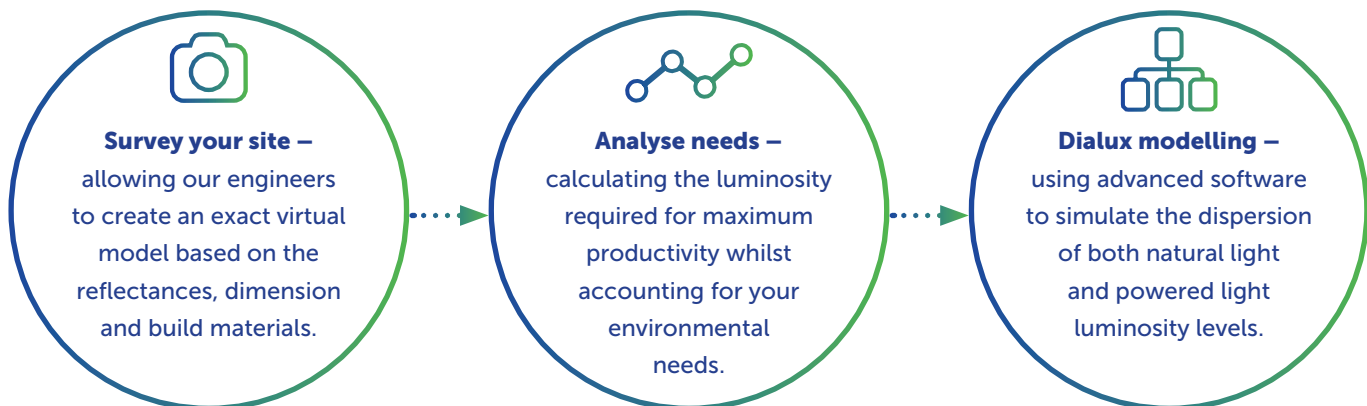
Challenge

In the past, lighting solutions were predominantly constructed without any specification. This often leaves buildings without adequate illumination or suffering from overheating issues.

Controlling all the variables necessary for sufficient levels of light throughout your building with daylight harvesting and an economic approach to placement and heat management, requires precision planning.

Solution

CoolTech uses a simple 3-step process to plan an efficient system streamlined to match the demands of your building whilst maximising the cost savings available:



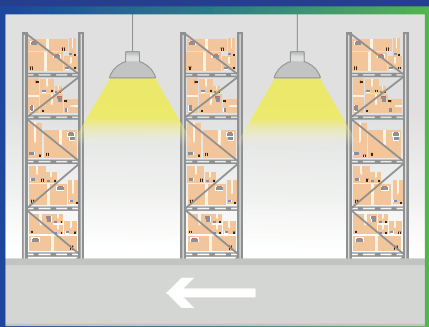
Benefits

- + By using our simulation you can test several scenarios that facilitate your requirements and predict the light distribution in your building.
- + You have full control and sign off over the application of the new lighting solution.
- + If you require changes at this stage – adjustments are simple and without any cap-ex implications, compared to the traditional method of installing first and planning later.

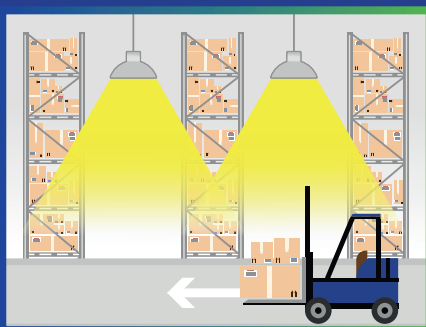
Open up to the possibilities

Lighting Control Solutions for Warehouses

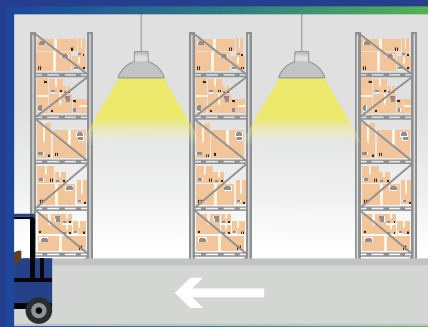
Motion detecting



1. If there is no motion detected, the light will remain at a low light level.



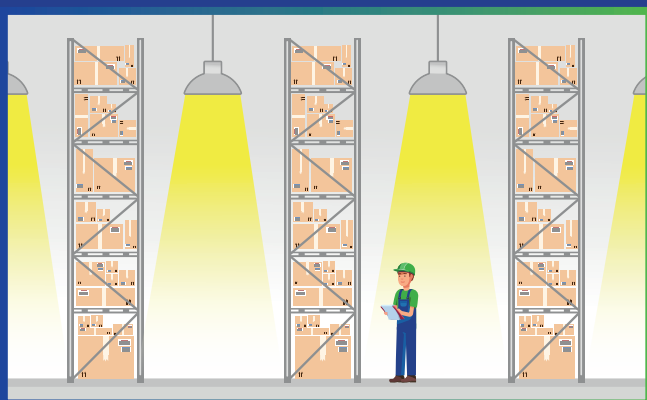
2. When motion is detected, the sensor will switch on the light up to 100%, or pre set light level preferred by the customer.



3. After a period of hold time, the sensor dims the light back to the previous low level.

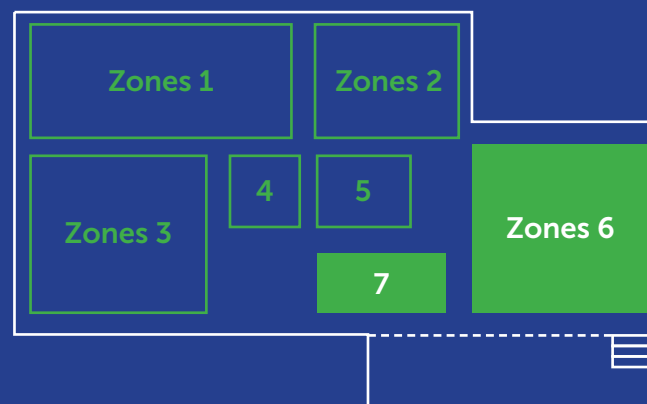
Follow-me

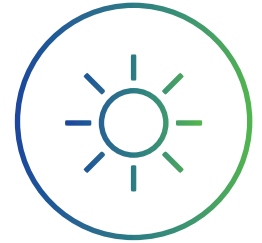
Automatically turns on neighbouring lamps in a timely fashion to make sure there is adequate light. Easy to set up with a few simple inputs.



Zoning

Create entire zones to turn on simultaneously by grouping them together using our control console.





The Lighting Industry Has Come of Age

Dictate the way your lights work – instead of your lights dictating the way you work.



Challenge

Lighting systems have historically suffered many problems. Inconsistent products with short lifespans have been the norm, powered by energy hungry technology.

Some products take time to reach full luminosity and filaments in glass bulbs can fracture in controlled environments. Short lifespan equals constant maintenance cost.

Facilities management has long sought alternatives to these costly and inefficient products. With emphasis on a low initial cost and installation labour charges our LED lights cast a shadow on the competition, requiring little to no maintenance throughout their lifespan.

Solution

CoolTech's lighting uses an instant strike system to the required luminosity the moment the power hits the circuit. This is achieved with high quality drivers and innovative lighting products, and by using solid state components there's nothing to break down.

Lenses focus the light with a magnification at the desired beam angle to provide the dissipation you need. The modular design also allows the heads to be positioned directionally allowing the required intensity to be achieved in a particular area.

Our custom design lights are so efficient there's no fan needed for any unit to keep cool, reducing the overall noise pollution.

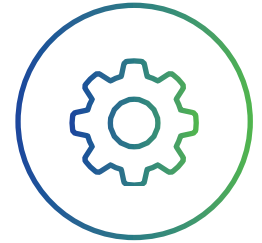
Benefits

+ Our lights are significantly more durable than those of the competition, lasting for years with negligible light degradation. Changing a unit won't be a concern for the first 4-5 years of operation.

+ When compared to a traditional 50W halogen bulb our 3W LED can reduce energy costs by 94% - without reduction in light quality.

+ Factor in energy savings and an increase in productivity and you have a financial case for making the leap to LED. And that's before you include the additional benefits of our engineering approach.

More Light – With Less Energy, Heat and Noise



Total Control of Your Environment

Ensuring accessibility and minimum downtime throughout our installation process.



Challenge

Lighting installation can restrict operations and building use. It is essential that CoolTech delivers your solution in a controlled time window to prevent disruption.

Solution

With our design service we are ahead of the competition. Each light's position is carefully selected, and wherever possible we utilise existing power cabling.

All our technicians are fully IPAF and IEEE accredited ensuring that the system is safe and adequate to power your LED lighting. As our products draw less load on the grid than traditional lights, there is no need to upgrade the supply.

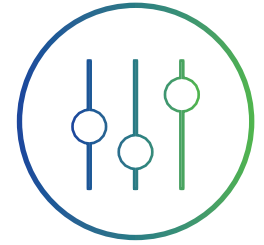


Benefits

- + By working with a single provider to implement your lighting design, using proven products that are tested and trusted, downtime is minimised.
- + We perform risk and health and safety assessments before any work commences, which means that there are no unforeseen delays in the installation process and deadlines are met.

Make your lighting work for you





Take the Human Element Out of The Equation

With advanced lighting logic controls.



Challenge

Lighting systems should provide you with complete control. Why can't the lights turn off automatically?

If you have a requirement where lights need to operate at intervals to simulate a seasonal cycle, what is the cost of an operator forgetting to turn off the system?

Wherever there are human elements controlling your lighting system you introduce an additional point of failure.

Solution

CoolTech utilises 'Boolean logic' to create adjustable rules that can be used with sensor arrays to control your lighting.

From lights that illuminate when motion is detected or respond to seasonal change in natural light for daylight harvesting through to systems that work in-line with 'internet of things' (IoT) technology, CoolTech has the expertise to create controls for you.

Benefits

- + Our LED lights instantly activate giving you no reduction in luminosity however many times your lights are turned off and on. As a result you ensure that lights are only used when needed, reducing energy costs and extending the lifespan of your lighting.
- + With natural daylight harvesting for modern building environments, our control systems maximise the natural light available whilst retaining the mandatory recommended light levels regardless to the seasonal change.

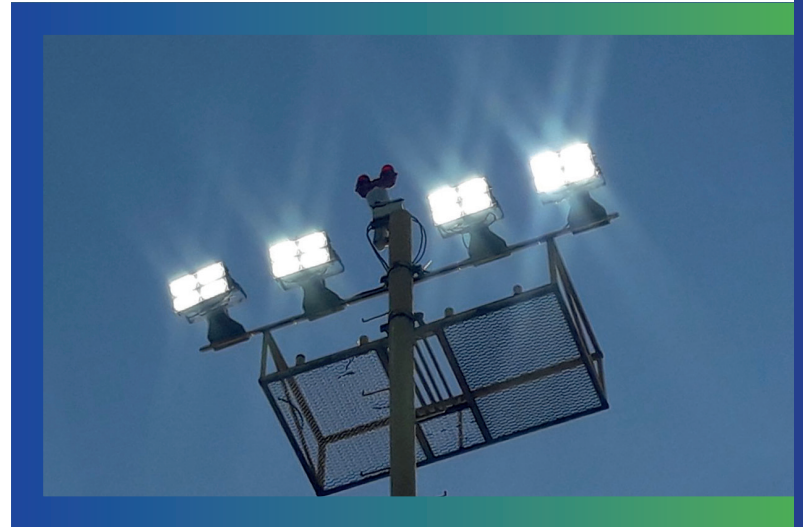
Never have to switch another light on or off





LED Lights Require Less Maintenance

CoolTech experienced 3 failures across over 2257 lights in 37 sites in 2017.



Challenge

Fluorescent lighting tubes last around 8,000 to 10,000 hours. LED lights are designed to last around 5 times as long. Bulbs are prone to failures, especially in hot working environments, with some companies leaving bulbs lit rather than risking breakages from the tension placed on the light source through repeated switching.

Solution

We have applied our approach to maintaining your lighting. With an LED system, our lights have no ignition systems or delicate glass tubes making them a robust alternative to traditional lighting.

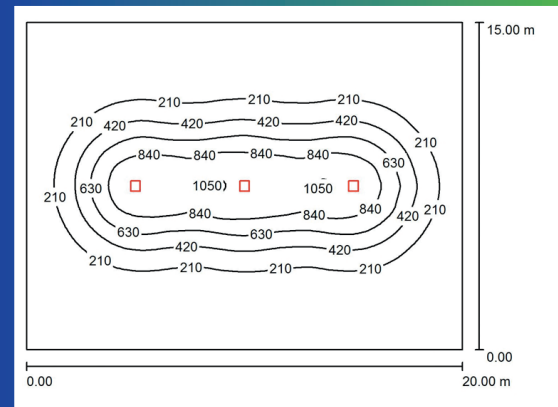
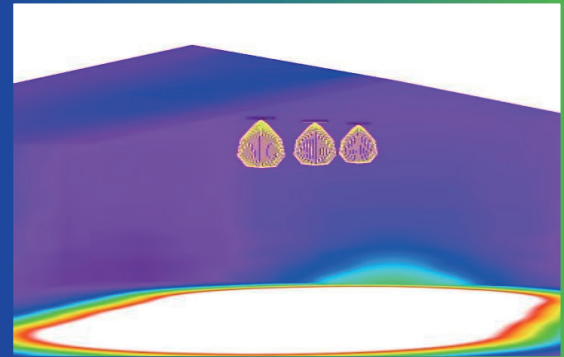
The result is simple. A better type of light that's less prone to failure or breakage, thus reducing maintenance costs, call-outs and down-time.

Benefits

- + Your lights are protected under a 5 year 'on site' warranty. Our technicians can replace broken lenses or a complete module because we use a modular plug and play system; we can quickly change a unit with the minimum of downtime.



*Service is our chance to shine –
the CoolTech difference*



Halo LED IP69K

Halo series LED highbay are developed to meet the needs of the food processing and pharmaceutical industries.

- + High pressure water resistant**
- + Steam resistant**
- + Food grade material**



Lighting Greene King

Greene King is the UK's largest pub retailer and brewer, based in Bury St Edmunds in Suffolk.

CoolTech were employed to resolve persistent, ongoing issues with lighting at one of the main business production sites.

The Problem

The Hen Hall warehouse was fitted with Metal Halide High Bay Lamps. The offices on the site used fluorescent tubes, and the exterior perimeter was mainly composed of sodium vapour lamps.

These lights had a high energy cost threatening to push the site over the agreed threshold with its power supplier. Additionally frequent failures were impacting production capacity and the cost of bulb replacement was becoming untenable.

Challenge

With many of the light fittings situated at heights of over 12 metres, lamps were not getting replaced due to access issues. As a result health and safety reports had cited problems with inadequate light in manufacturing areas.



Solution

CoolTech installed a new solution consisting of 111 LED lights in the offices and 113 LED lights in the warehouse and perimeter systems.



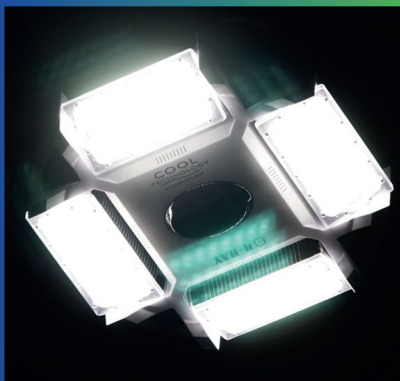
This resolved all issues with illumination providing a well-lit working space.



The lights saved £21,100 per year – giving the business an ROI (with installation costs) in 2.93 years and a saving of over £100K over 5 years.



There have been no failures since commissioning in June 2017 of any kind on this site. We expect this to be the case for at least 8-15 years.



Want to Avoid Costly Overheads on Triad Days?

If your business is near capacity on the highest demand days of the year - your power company could severely penalise you for going over the agreed limit on your tariff.

With a CoolTech energy consumption review, our experts can show you how to use your bills to predict the times of highest energy use and demonstrate where you can save energy.

Never pay surcharges again - book your review with us:

collen@cool-tech.co.uk

01379 658 721

www.cool-tech.co.uk

**Intelligent Technologies
for a Cleaner, Greener
Environment**

Cool-Tech Ltd
Unit 7, Forge Business Centre
Palgrave, Diss, Norfolk
IP22 1AP

**COOL
TECHNOLOGY**

Technologies for the Environment