



*St Michael and All Angels Episcopal  
Church*

**CASE STUDY**

**CMCE LIGHTNING SUPPRESSION SYSTEM**

# CMCE LIGHTNING SUPPRESSION

St. Michael & All Angels is a historic Episcopal church located on Sanibel Island, Florida. In September 2022, Hurricane Ian caused catastrophic damage to the region, devastating the church and requiring an ammassive restoration project completed in 2023. The church's unique architecture and historic bell tower required special preservation care during rebuilding efforts.

However, they faced a significant challenge: Florida experiences approximately 1.2 to 1.4 million lightning strikes per year, with some of the highest lightning densities in the United States. Structures with elevated architectural elements such as steeples and bell towers are particularly vulnerable to lightning strikes. Following the extensive restoration after Hurricane Ian, protecting the church from lightning became a priority to safeguard the structure, historic bells, electrical systems, and congregation.

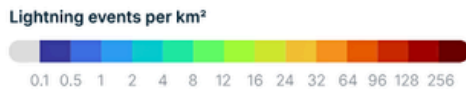
To address this issue, the advanced CMCE Lightning Suppressor system was presented as a comprehensive solution for lightning protection. It became clear that the CMCE was the most reliable and effective option for protecting the historical aesthetics of the church.

A CMCE-120 lightning protection system was installed on top of the Cross the highest point on or around the church. This system will provide an approximate 120 meter (393-foot) protection radius and required no external power source

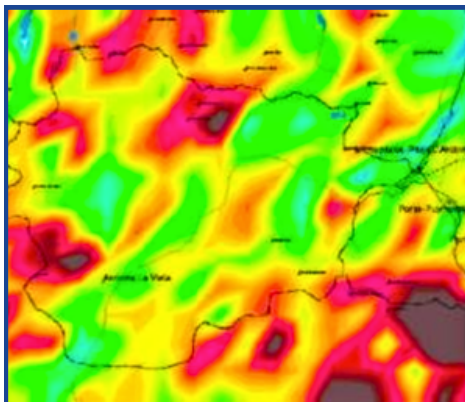
Following the devastation caused by Hurricane Ian and the extensive 2023 restoration project, St. Michael & All Angels Episcopal Church took strategic action to protect its historic architecture and community landmark status. The installation of the CMCE-120 system demonstrates a commitment to long-term preservation, safety, and resilience in one of the most lightning-prone regions of the United States.



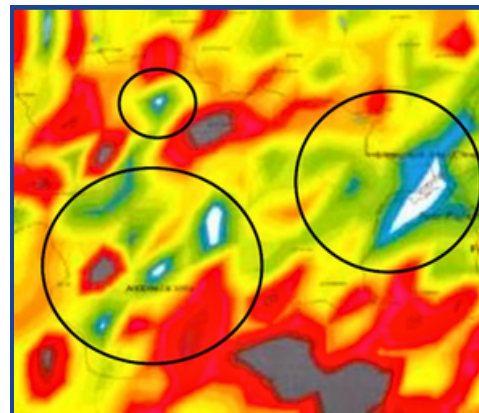
**BEFORE**



**AFTER**



**No Lightning  
Protection Installed**



**CMCE Lightning  
Suppressors Installed**

The lightning heat maps shown above are both of the same location. In the "After" heat map, the white areas within the black circles show where the installed CMCE Lightning Suppressors are draining the electrical charges from the atmosphere, effectively eliminating the possibility of lightning strike formation.

