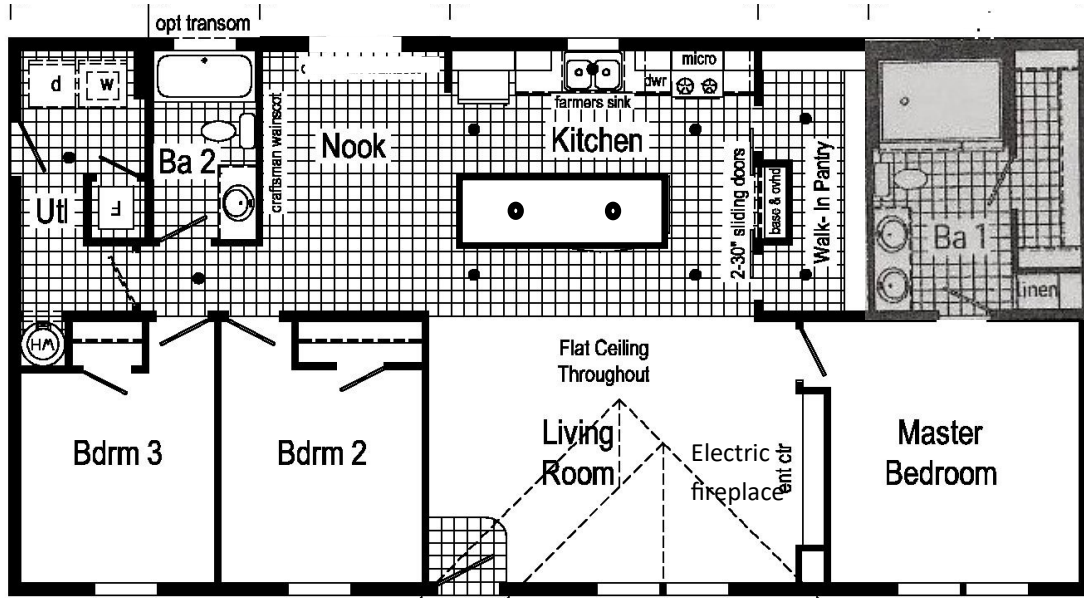


# 2025 Commodore 28x52 Total Drywall #5



**Gas M1MB Furnace**

**Perimeter heat**

**Water heater 40 Gallon electric**

**200 AMP ELECTRIC**

**20Cuft Fridge Stainless steel**

**Gas Range, Dishwasher, microwave**

**Smooth Ceilings with cove molding**

**OSB exterior walls**

**Finished Drywall Package**

**Exterior water faucet**

**Exterior receptacle**

**Dormer flush mount twin peak**

**Transom window 2nd bath**

**Hi rise faucet kitchen**

**Bedroom can lights**

**Sliding Glass Door**

**Ceiling fan living room**

**2 pendant lights island**

**Tv Jack over fireplace**

**Dome Light nook**

**1 lite window backdoor**

**3 lite window front door**

**8 ft flat ceilings**

**2" miniblinds**

**Vinyl living room**

**R-22 floor insulation, R-19 walls, R-28 Ceiling**

**Backsplash double row 2"x10" kit & pantry**

**KCMA Certified Cabinets , Soft close**

**4x6 ceramic shower master bath Half glass**

**2 sliding barn doors pantry**

**China sinks baths**

**Fireplace LED Shiplap, Shiplap wainscot nook**

***Palmer Sale Price see Display Map \$\_\_\_\_\_***

**Palmer Manufactured Homes**

147 Route 17C Waverly, NY

607-565-4535

***www.palmerhomes.net***