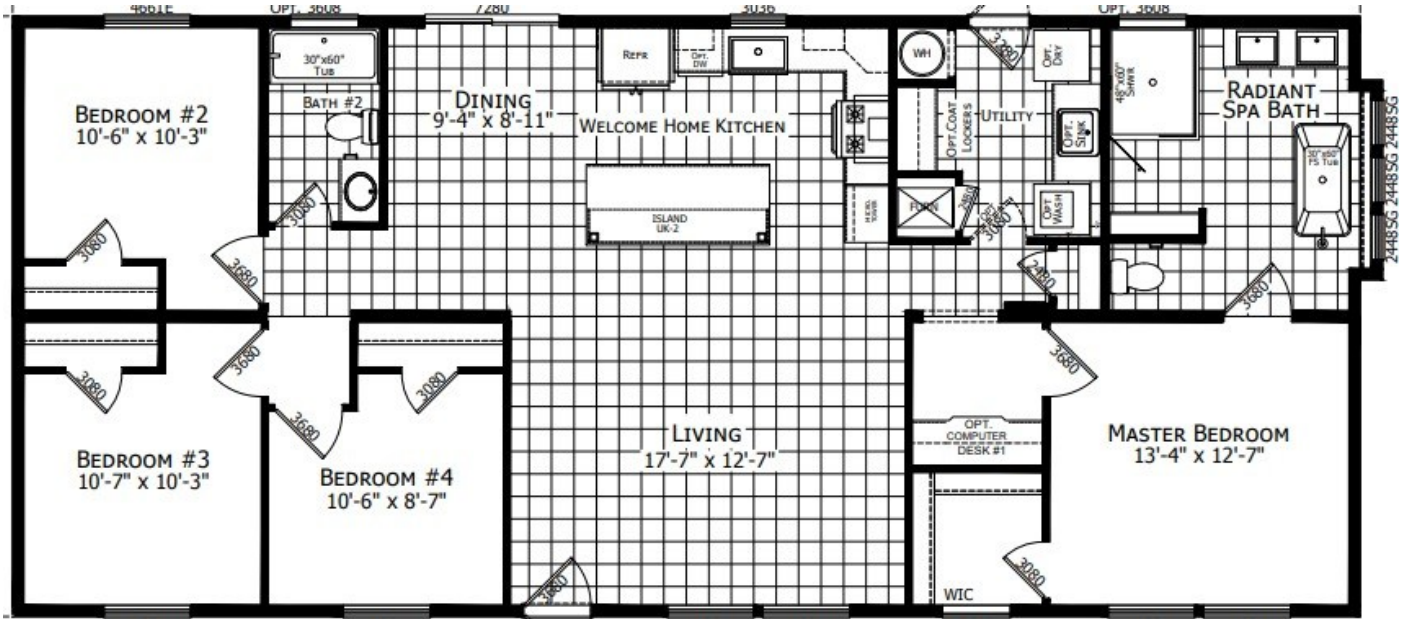


2026 Champion Redman 28x60 #2



Radiant Spa Master bathroom

Desk /office

Black interior package

Welcome Home Kitchen –Side by side Refer w/
water & Ice, Tile Backsplash 6in. Kitchen/full be-
hind range, Stainless steel farm sink, uk2 range
hood, Cabinet over fridge, with cubbie

Champion 7 year warranty

OSB Includes house wrap

Arch Shingles 30 year, Ice guard

Pier saver x2 at door

Optional 4th bedroom

Upgrade hickory molding

200 AMP Electric

Tv jack , Combo detectors , A/c Ready breaker

Recessed lights

Comfort height toilets

Drop in Utility Sink and coat locker

Black cage deco light

Vinyl blinds per window

R-11 floor, R-19 side wall, R-30 roof

Vinyl floor living room

Gas Range

Dishwasher

Microwave

50 Gallon water heater

High Efficiency Gas Furnace

Furnace Door

Programable Thermostat

Exterior water faucet and Exterior outlet

Whole house water shut off

Sliding Glass door

Storm door x2

Transom window hall bath and master closet

www.redmanhomesofpa.com

Palmer Sale Price to Order \$ _____

Palmer Manufactured Homes

147 Route 17C Waverly, NY

607-565-4535

www.palmerhomes.net