



Decor 2025-2026
Selections

2025-2026





Classic Craft Cabinetry



Ice Mist



Cavco Clarion is well known through the industry for high quality, innovative designs , and beautiful homes - making Cavco the first choice of home buyers. Cavco’s leadership is made possible by a highly trained and experienced workforce, the latest building technologies, and a passion for your satisfaction. Whether the buyer desires a single or multi-section home, the quality answer is always a Cavco Home.

Cavco’s commitment to the homeowner, the retailer, and their own employees ensures a high end quality product that makes every buyer proud to “Come Home to Cavco.” And with many of our manufactured homes now eligible to earn the ENERGY STAR® label, we bring an additional level of quality and comfort to our homes. For the sixth straight year, Cavco Clarion is an ENERGY STAR® award winner.



TABLE OF CONTENTS

Decor Selections

INTERIOR

Cabinets
Hardware
Countertops
Tile - Kitchen and Bath
Shower Tile
Vinyl Flooring
Vinyl Tile
Carpet
Wall Vinyl
Shiplap
Doors
Trim
Fireplace Surround

EXTERIOR

Standard Siding
Market Square Siding Selections
Shutter Selections
3-Tab Shingles
Architectural Shingles
Accent Siding- Shake
Accent Siding - Vertical

CABINETS



Mission Flat Panel

Kanza

Available in:

- MDF
- Hardwood



Mission Flat Panel

Eastern White Oak

Available in:

- MDF
- Hardwood



Mission Flat Panel

Rustic Elm Oak

Available in:

- Hardwood



Mission Flat Panel

Silk Maple

Available in:

- Hardwood



Mission Flat Panel

Deep Blue

Available in:

- Painted Oak

Hardware



Hardware
Pull



Available in:

- Black
- Gold
- Nickel

Euro Style

Brushed Gold
Top Pull



Brushed Nickel
Top Pull



Matte Black
Top Pull



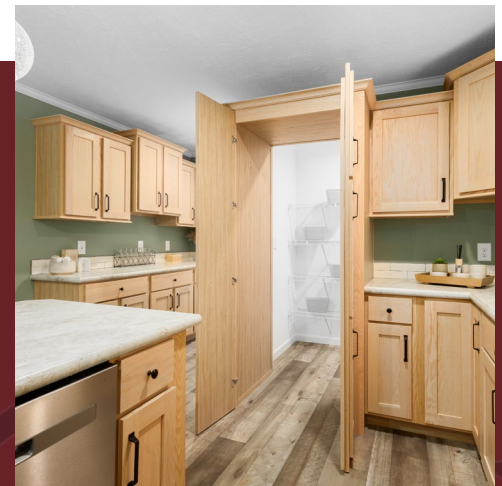
Classic Craft Cabinetry

Cavco Homes understands the importance of a well-designed kitchen. Kitchens are often the gathering point of a home, where families share meals and friends share time. Key to any great kitchen are the cabinets.

Cavco Homes' Classic Craft Custom Cabinets are built to look great, built to meet your needs, and *built to last*. Most of our homes have cabinets that are constructed to the rigorous standards of the Kitchen Cabinet Manufacturers Association. This KCMA label is the same as you'll find in the best store-purchased or custom-built cabinets.

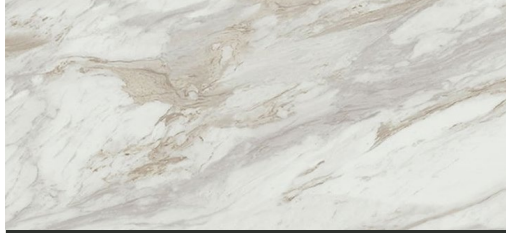
Simply put, our cabinets are heavier, stronger, and built better. Our cabinets are regularly (and randomly) tested by KCMA representatives. Our cabinets need to pass many tests to meet KCMA standards, including:

- Overhead cabinets rated to 500 pounds capacity
- Drawers opened 25,000 times - with weight
- Cabinet doors opened 25,000 times
- Harsh testing of cabinet finishes





Autumn Carnival



Drama Marble



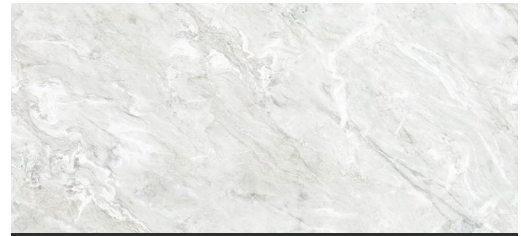
Ouro Branco



Forged Steel



Glacier Quartzite



Ice Mist



Granito Cascata



Crystal Quartzite



Roca Bosco



Laminate

Ice Mist



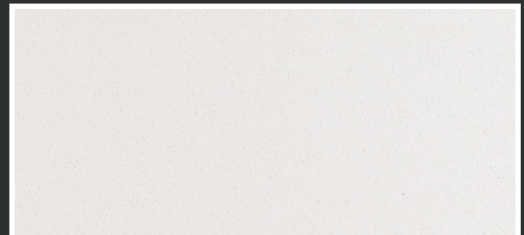
Kinglake

Only Available Islands

Solid Surface



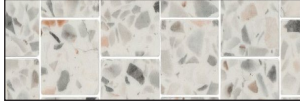
Macabo Grey



Frost White

CERAMIC TILE

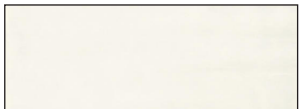
Kitchen & Bath



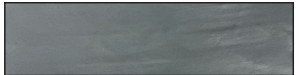
Hollywood Mix
3" x 6" Tile



Drift Glossy
3" x 12" Tile



Coconut Glossy
3" x 12" Tile



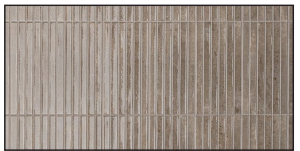
Aloe
2.5" x 8"



Star
2.5" x 8"

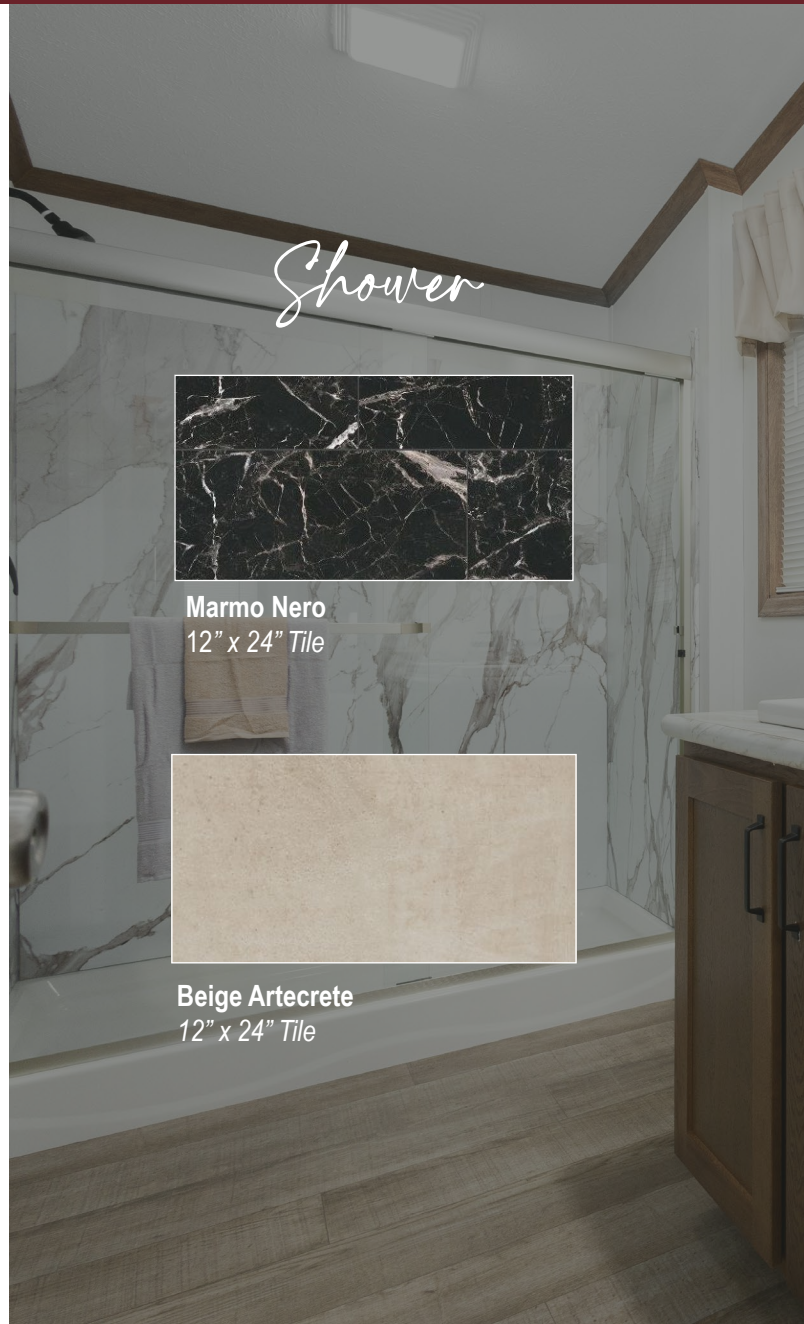


Caraibi
5" x 10" Tile

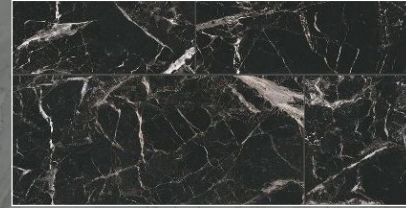


Grigio
5" x 10" Tile

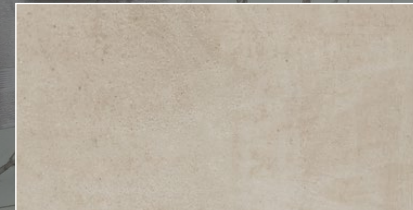
Kitchen & Shower



Shower



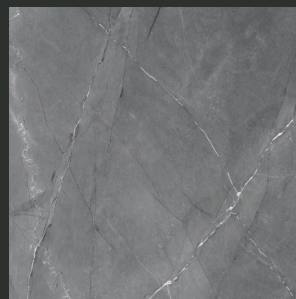
Marmo Nero
12" x 24" Tile



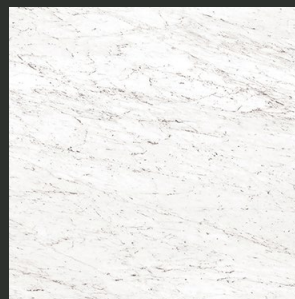
Beige Artecrete
12" x 24" Tile

THE STONE LOOK

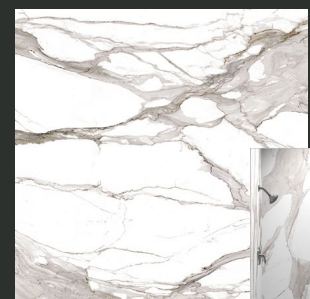
These finishes recreate the classic beauty and sophistication of natural stone slab, and come with the added durability.



Nordic Grey
Monarc



Bianco Carrara
Monarc



Calcatta Gold
Monarc



FLOORING

VINYL FLOORING



Belleville
Vinyl Flooring



Beachwood
Vinyl Flooring



Country Road
Vinyl Flooring



Danbury
Vinyl Flooring



Cromwell Hex
Vinyl Flooring

Luxury VINYL PLANK



Fauna
Luxury Vinyl Plank



Kardigan
Luxury Vinyl Plank

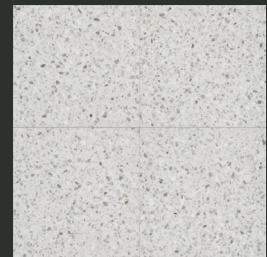


Hawthorne
Luxury Vinyl Plank



Vivara Terrazzo

Luxury VINYL TILE



Vivara Terrazzo
Luxury Vinyl Tile
18" x 36" Tile

Flooring

Carpet

EDGEWATER (15 OZ.)



Canyon Cove



Charcoal



Fossil

CAPE CANAVERAL (25 OZ.)



Mocha Latte

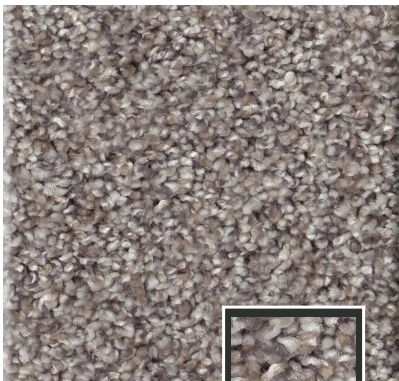


Nutria

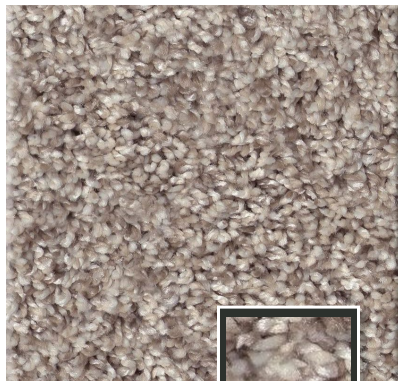


Nature Trail

INLET SHORE (45 OZ.)



French Buff



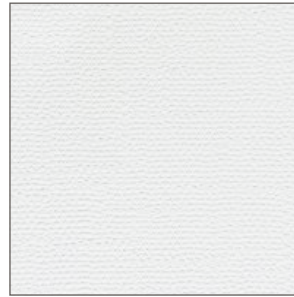
Pale Ecu



INTERIOR VINYL



WALL VINYL



Winter Burlap Roysons
Wall Vinyl



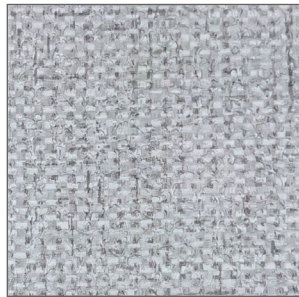
June Stone
Wall Vinyl



Medley Light
Wall Vinyl



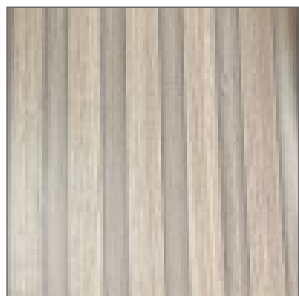
Empress
Wall Vinyl



Cane
Wall Vinyl



Highland Slate
Wall Vinyl



Steep Ash
Wall Vinyl

INTERIOR

SHIPLAP

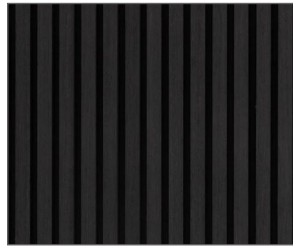


White
Painted

Shiplap



Natural
Stained



Black
Painted

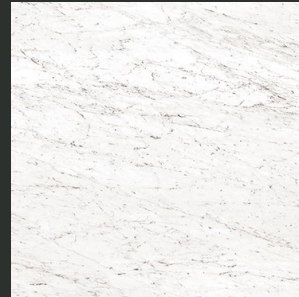
Tambour



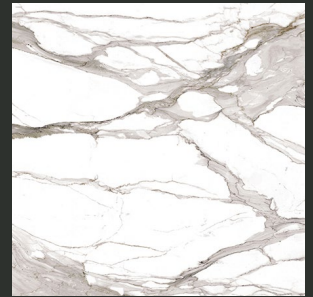
INTERIOR *Fireplace*



Nordic Grey
Monarc



Bianco Carrara
Monarc



Calcatta Gold
Monarc

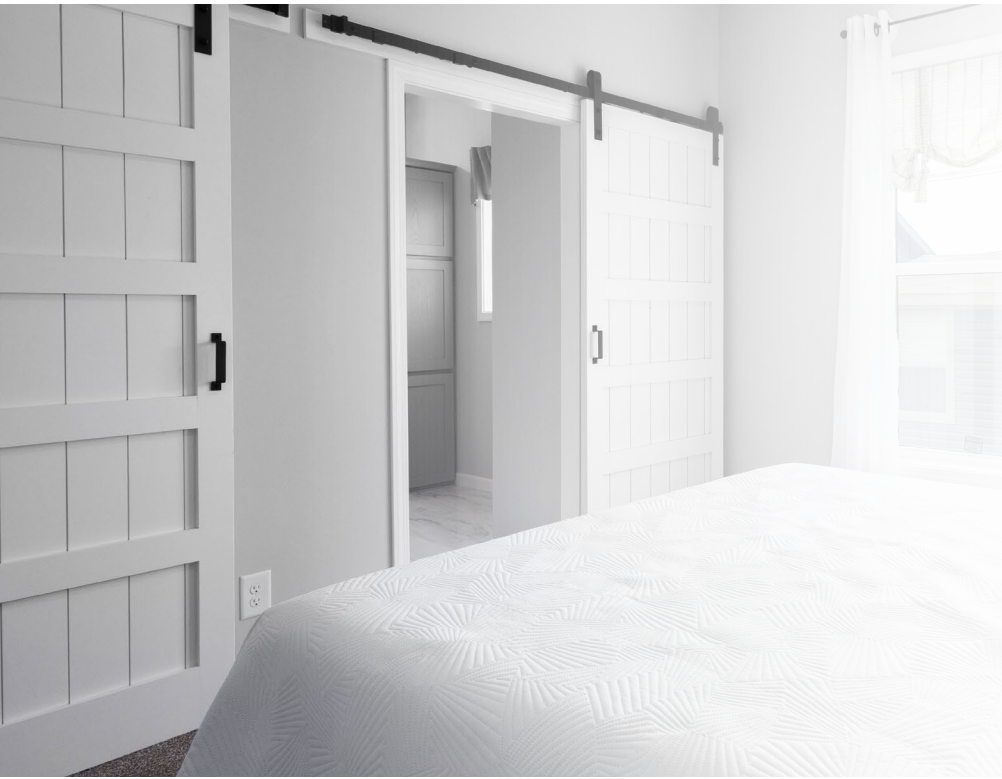


Aged Iron
Monarc



INTERIOR

Doors



BARNDOOR



OPTIONS:

- White Painted
- Natural Stained

* Where available

2-PANEL INTERIOR



OPTIONS:

- White Painted

5-PANEL INTERIOR



OPTIONS:

- White Painted

KANZA DOOR



OPTIONS:

- Kanza Wrapped



Black Lever Handle

Trim



Kanza Wrapped



White Standard



Craftsman White



EXTERIOR

STANDARD SIDING SELECTIONS



Country Beige

Aspen White

Clay



Driftwood

Cypress

Greystone

MARKET SQUARE SIDING SELECTIONS



Graphite

Lighthouse Red



Spruce

Espresso

NOVIK STONE SELECTIONS



Smoke Grey

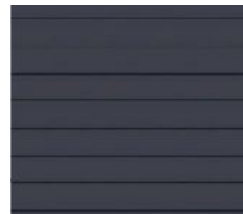


Castle



Carbon

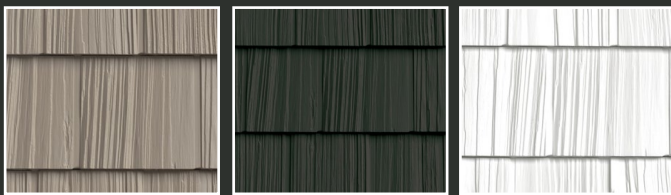
Regatta Blue



Indigo

Accent

SHAKE SIDING



Shadow

Ironside

Snow

White Shake



EXTERIOR

SHUTTER SELECTIONS



Black

White

Sandstone

Cranberry

Indigo

Pewter Grey

ARCHITECTURAL SHINGLES



Estate Gray



Driftwood



Onyx Black

Accent

LINEALS
White, Clay, and Black

White Vertical



VERTICAL SIDING



Carbon



Clay



White

2025-2026



YOUR INDEPENDENT RETAILER IS:



20898 Paint Blvd.
Shippenville, PA 16254
(814) 226-9210
www.commodore-pa.com

Visualize your dream home!



www.commodore-pa.com/inhouse-experience

CONNECT WITH US:



Your purchase contract, including options, is with your retailer who is an independent contractor, not our agent, and who is responsible totally for any alterations, exchanges, additions or attachments made in or to your home.

All descriptive representations of the products on this brochure are believed to be correct at the time of publication. However, due to continued product improvement and changes in suppliers, design and production, accuracy cannot be guaranteed. Therefore, equipment, colors, material specifications, prices and model availability are subject to change without notice. All information and images contained in this brochure are property of Commodore Homes and for the use by active dealers of the company only. © 4/25