

AI WON'T FIX A BROKEN BUSINESS SYSTEM — BUT IT WILL EXPOSE ONE FAST



The current narrative surrounding Artificial Intelligence often borders on the miraculous. Business owners are inundated with the promise that AI is a plug-and-play solution for scaling operations, reducing overhead, and eliminating friction. However, for a business generating 1M to 20M in revenue, the reality is far more clinical.

AI is not a repair tool; it is an analytical and operational amplifier.

If your core business systems are architected for growth, AI will accelerate that growth exponentially. But if your systems are fragmented, your data is siloed, and your workflows are held together by manual workarounds, AI will not fix the problem. It will simply automate the chaos, making your inefficiencies more visible and more expensive at a much faster rate.

THE MAGNIFICATION OF SYSTEMIC FRICTION

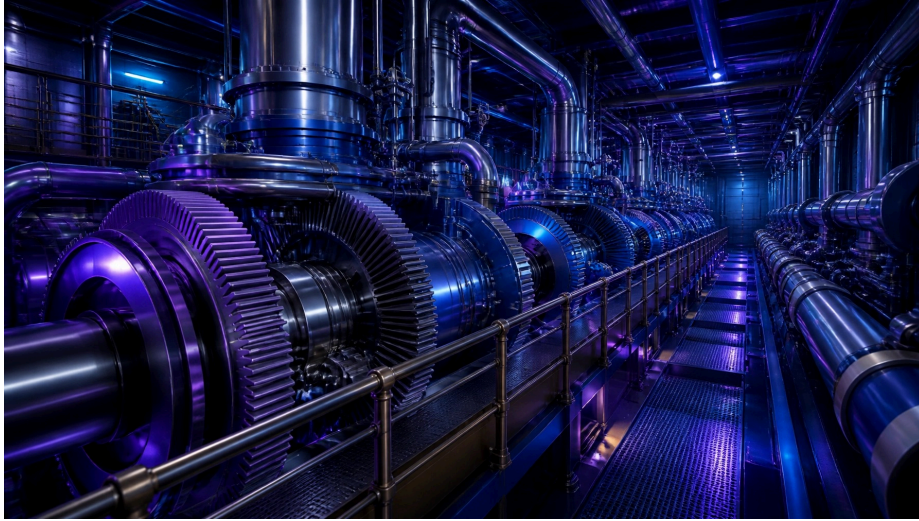
When we discuss Bizness Engineering at WOWSuccessTeam, we look at the structural integrity of your operations. Most businesses operate on what we call Bicycle Systems—fragile processes that require constant manual pedaling from the founder or key staff to keep moving.

Strapping a high-performance AI engine onto a bicycle frame does not create a jet. It causes the frame to shatter under the stress of the new velocity.

Common Broken System red flags that AI will expose:

1. **DATA FRAGMENTATION:** If your customer data lives in three different places, AI cannot provide accurate predictive insights. It will give you hallucinated results based on incomplete information.
2. **LACK OF SOP CLARITY:** If a task requires human intuition because the steps aren't documented, an AI agent will stall or produce inconsistent outputs that your team then has to spend time fixing.

3. **SILOED COMMUNICATIONS:** If your CRM doesn't talk to your project management tool, AI cannot automate the hand-off. It will simply fire off notifications into a void.



THE ARCHITECT VS. THE OPERATOR

Scaling from 1M to 10M and beyond requires the founder to shift from being the primary Operator to the Architect of the system. Implementing AI without first engineering the system is an Operator's mistake—it is a tactical fix for a structural problem.



Strategic growth requires a foundation that is platform-agnostic and process-first. This means engineering workflows that work regardless of the software being used. Only then do you layer on the technology.

ENGINEERING YOUR AI READINESS

At WOWSuccessTeam, our methodology focuses on Time, Tech, and Teams. We don't just install automation; we engineer the environment where automation can actually thrive. This involves a rigorous audit of your current Business Engineering to ensure your foundation is ready for the speed of AI.

The goal is not to have more tech. The goal is to have less stress, more action, and a business that functions as a high-performance engine rather than a fragile assembly of parts.

STOP AUTOMATING CHAOS. START ENGINEERING GROWTH.

Before you invest another dollar in AI solutions, ensure you aren't just accelerating a breakdown.

ARE YOU READY FOR THE FUTURE?

Download our AI-Readiness System Audit below to identify the cracks in your foundation before you scale.

If you are ready to stop the tactical tinkering and start engineering a business that runs when you don't, book your Engineered Growth strategy session with our team.

[BOOK YOUR STRATEGY SESSION](#)