

NOTICE CHOKE CABLE ADJUSTER UPDATE

Your new WSK-1 System includes the latest choke cable adjuster. The cable swedge shown in the instructions has been replaced with a new easier cable clamp assembly as shown below.



WSK-1

Wireless Remote Start System

Installation Instructions

for
Honda EU3000is Generators



Tools Required:

- 8mm Socket
- 10mm Socket
- Flat Head screwdriver
- Long #2 Phillips screwdriver
- Pliers
- Small file

Step 1

Remove 4 nuts on front cover.



Step 2

Remove fuel valve extension using a long Phillips screwdriver.



Step 3

Disconnect battery cables. Then, remove 4 bolts that secure the front panel (2 on each side). Pull the front panel out and down.



Step 4

Locate connector for ignition switch and unplug.



Step 5

Remove the back cover of the generator and remove deflector by removing 4 bolts shown below.



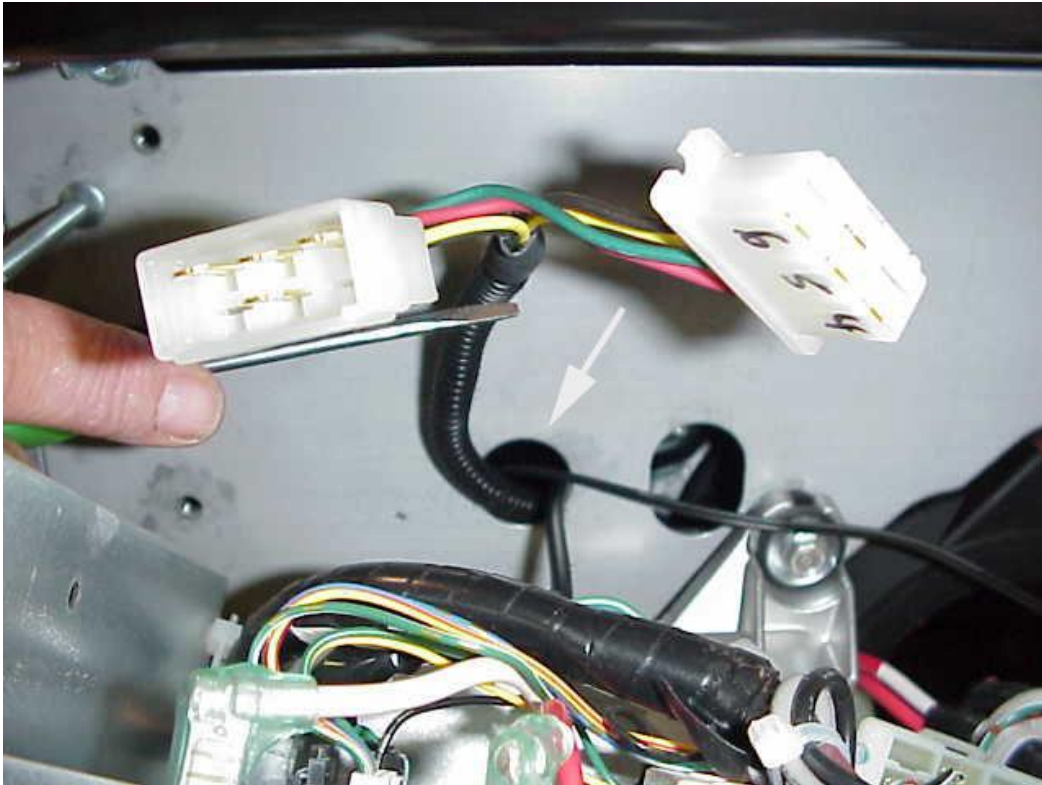
Step 6

Remove side door and top of generator as shown.



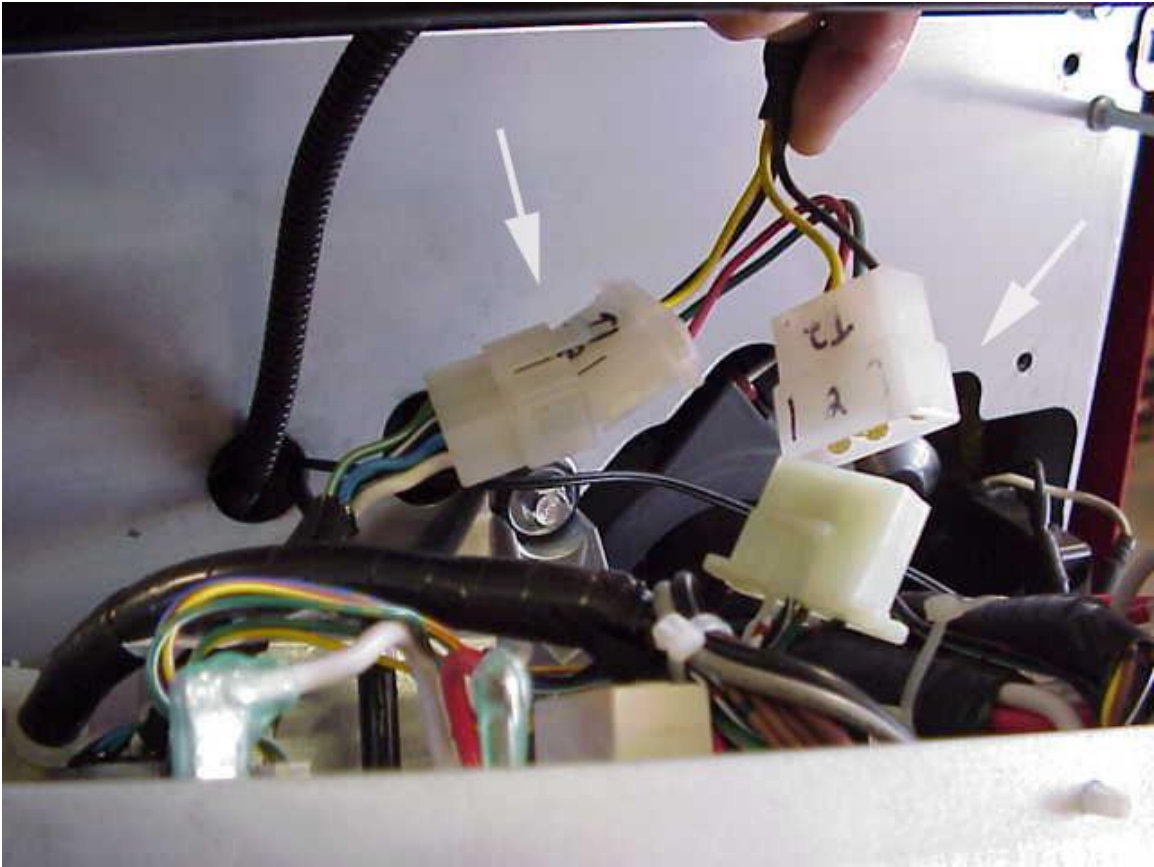
Step 7

Thread wire harness from WSK-1 remote to back side of control panel from the engine compartment through hole as shown below. Run Black wires from remote under the control panel to the battery.



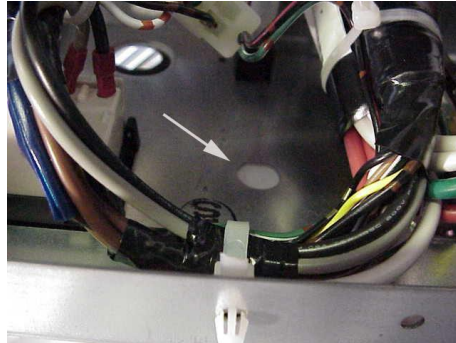
Step 8

Connect WSK-1 harness connectors to the factory connectors as shown below.

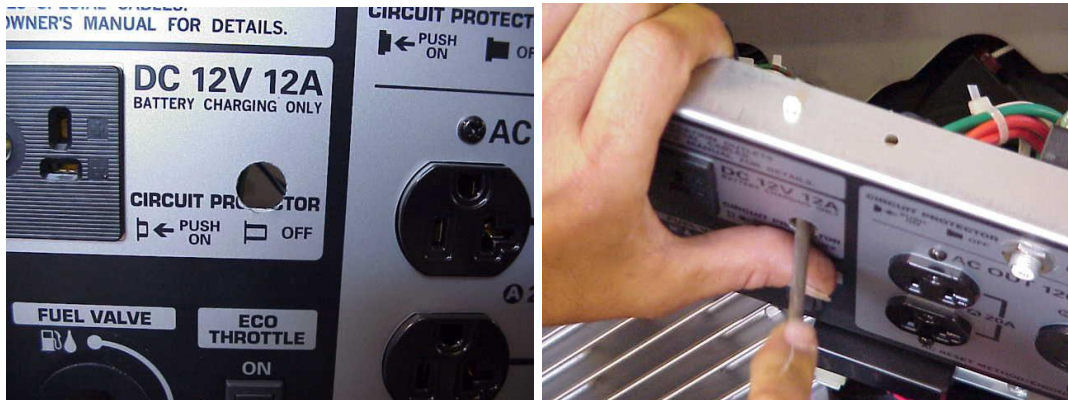


Step 9

Locate the hole in the back of the control panel.



Cut out the front panel sticker from the hole then using a small file, round out the flat portion at the bottom of the hole.

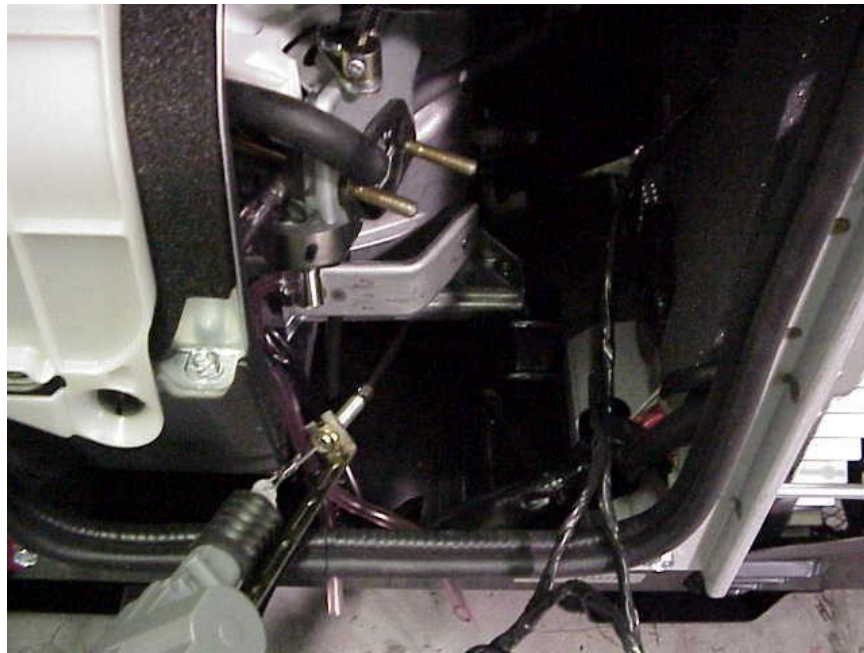


Remove the washer and ON/Off plate from the toggle switch from the WSK-1 harness and mount the toggle switch as shown.



Step 10

Remove air box and filter then install Velcro tape on bottom of actuator. Next, thread cable under engine and pull out other side. Press actuator firmly down on bottom of generator compartment.



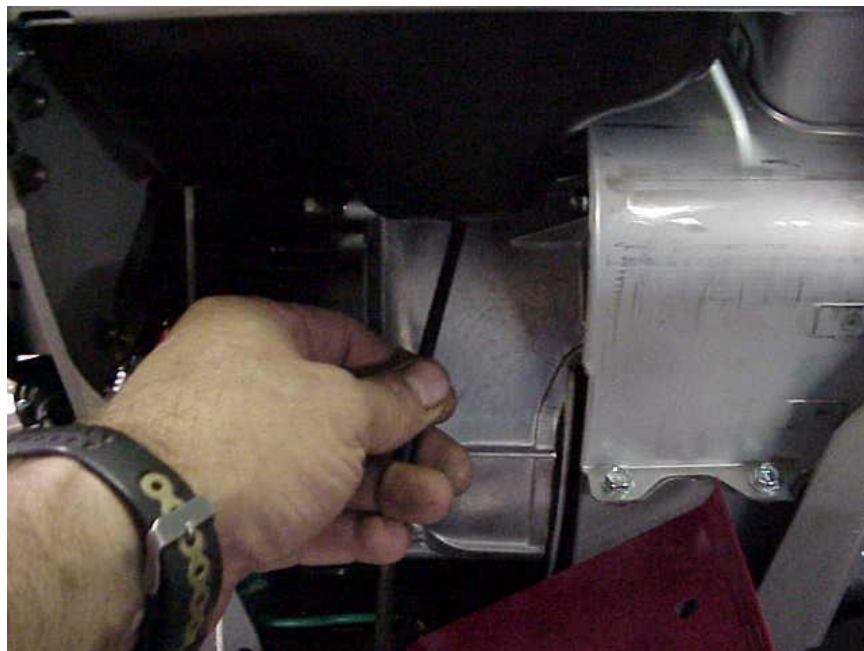
Step 11

The actuator should be mounted in the position shown below.



Step 11

Thread cable for actuator under fuel tank towards carburetor.



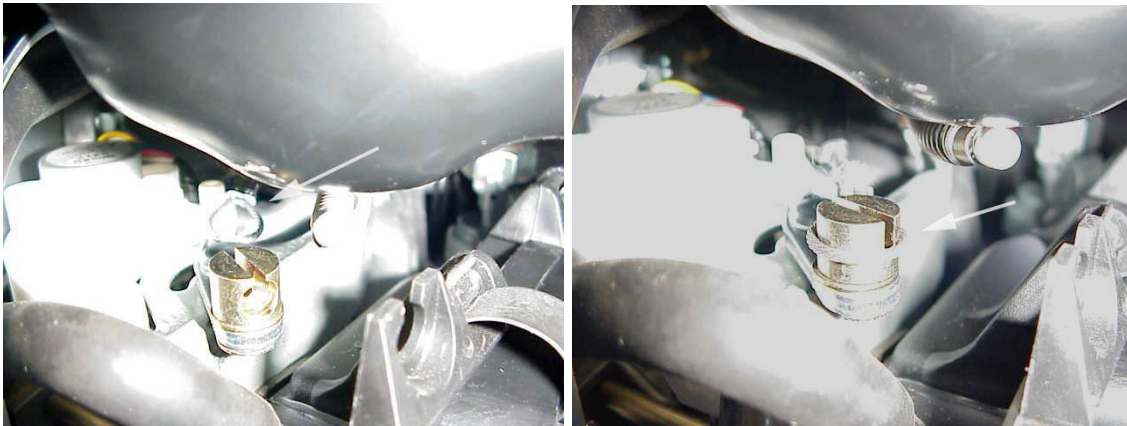
Attach cable holder by removing the adhesive backing and attaching as shown.



Step 12

Attach cable on to choke arm on air filter side as shown below. Adjust choke by pulling looped cable until choke lever starts to move. Squeeze cable swedge tightly. The proper adjustment is to be just pulling slightly on the choke linkage.

Re-Assemble the air filter at this time.



Step 13

The WSK-1 control unit mounts on the door. 3" in from edge of door and 1" down from the top edge. Mark the area and remove/scrape off the foam from door panel in the mounting area. Install Velcro strips as shown below.



Plug harness into WSK-1 control box.
Then connect WSK-1 choke controller connector.

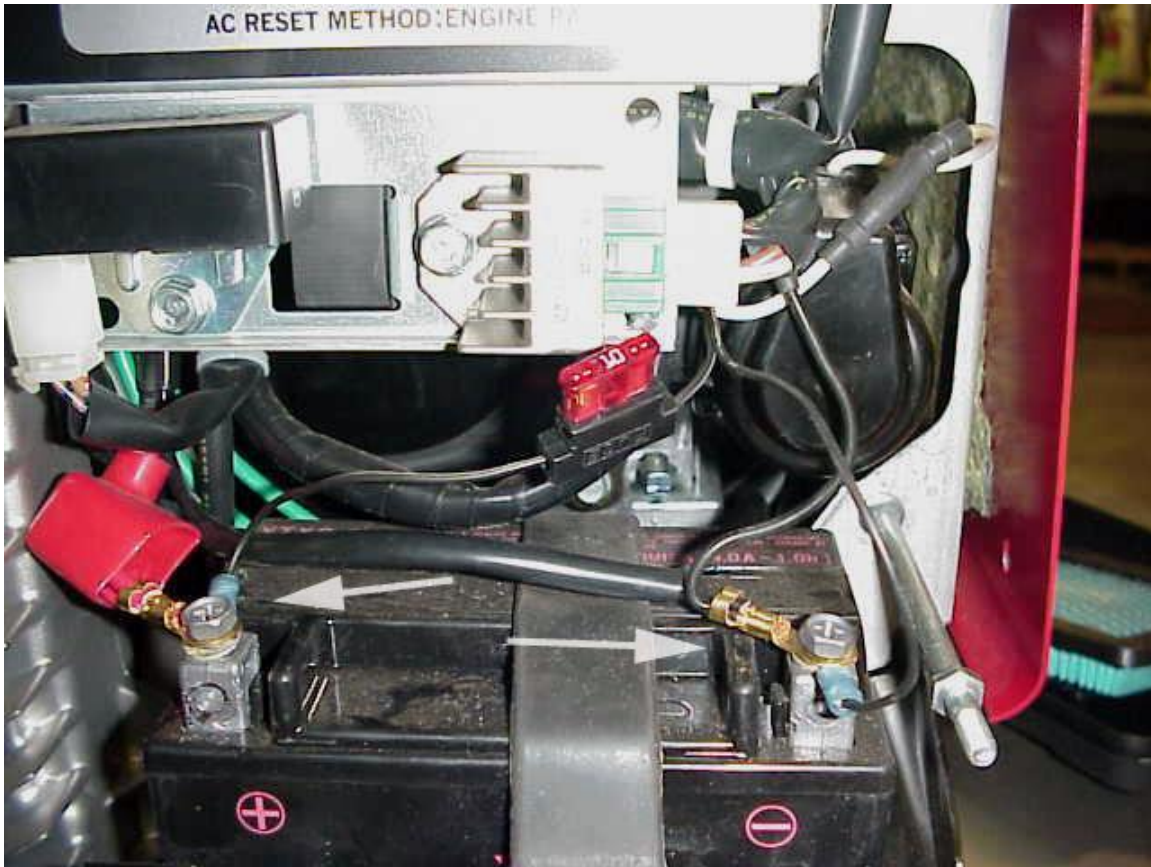


Step 14

Re-connect battery connections as shown below.

Red factory cable and fused cable to Positive (+)

Then, Black factory cable and non-fused cable to Negative (-).



Step 15

Re-Assemble the generator. Route antenna in door edges as shown below, or, you may route it and tape it anywhere on the generator that you would like. End of antenna needs to be vertical for longest range. You are now ready to test the remote start. Refer to WSK-1 Operating Instructions.





1417 John B. Hayes Rd.

Ponca City, OK 74601, USA
(580) 762-6334 1-800-375-7767

Operating Instructions

WSK-1 Wireless remote start kit

The WSK-1™ is designed to be trouble free in operation. The WSK-1™ requires the battery to be installed as per the generator's manufacturer's instructions. The battery must be fully charged.

To use the WSK-1™ the key in the ignition must be in the OFF position. The key switch will retain its normal function. The choke on the generator will no longer be required for starting as the WSK-1 provides automatic choke operation.

Starting

To start the generator, follow these steps:

1. Turn the toggle switch on the generator's control panel to ON.
2. Press the Red On/Off button.
3. Press the Gray Arm/Disarm button.
4. Press the Blue Start Button and engine will turn over and generator will start.
5. If the generator does not start on the first attempt, press the Arm/Disarm again followed by the Start button.

Note: Aux. 1 button is not used.

Stopping

1. To stop the generator, press the Red On/Off button. The generator should then stop.
2. Turn the toggle switch on the generator's control panel to OFF. This is for storage or times when remote start will not be used for an extended period and prevents the battery from draining.



WSK-1™ TROUBLESHOOTING - TECH SUPPORT

Issue: Unit only “clicks” and does not turn over engine when trying to start with remote.

Cause: Generator’s battery charge level/crank power too low.

Solution: The generator’s onboard battery is just a bit too weak on state of charge and/or state of health to allow the extra power required to start remotely. Disconnect battery from generator to charge or replace battery if necessary.

Issue: The generator will start but will not shut off by remote or with ignition switch.

Cause: The generator was likely started remotely while the ignition key was turned on or was started with the ignition key while the control panel toggle switch was turned on.

Solution: Disconnect the WSK-1 control box power connector and wide harness plug connector. Count to 10 and then reconnect. This will reset the ground circuits to allow shut down. To prevent issue: leave the ignition key turned to OFF or not in the ignition switch while starting remotely. The control panel toggle switch needs to be ON when using the remote, or OFF for long term storage or when starting with ignition key switch.

**For further assistance contact Hayes Products at 580-762-6334
or email: service@hayesequipment.com**