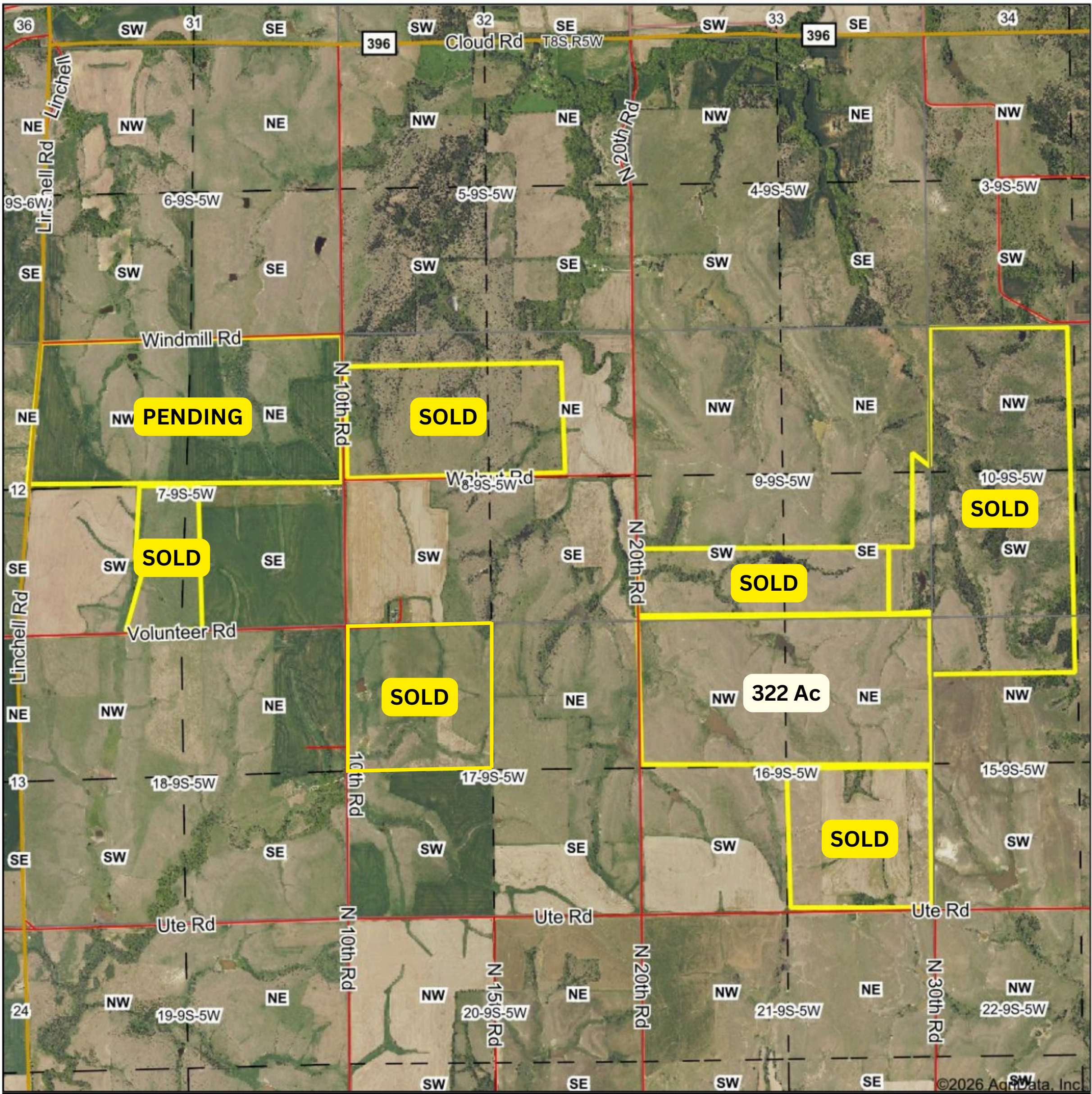


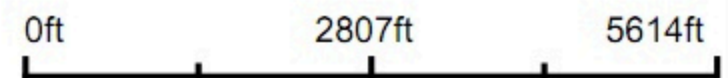
Seller does offer parcel splits!

Aerial Map

Taxes: \$1,928.78 on 322 taxable acres.
Approx. 322 acres +/- available at
\$2,800/acre.



Boundary Center: 39° 16' 38.95, -97° 53' 50.97



17-9S-5W
Ottawa County
Kansas



HORIZON
FARM & RANCH REALTY, LLC
Formerly Barry's

- Farms & Ranches
- Rural Homes
- Auctions
- Hunting Property
- Value Assessments

Office 785-825-1199
Toll Free 888-825-1199
www.horizonfarmranch.com

Maps Provided By

surety
CUSTOMIZED ONLINE MAPPING

© AgriData, Inc. 2025 www.AgriDataInc.com

2/11/2026