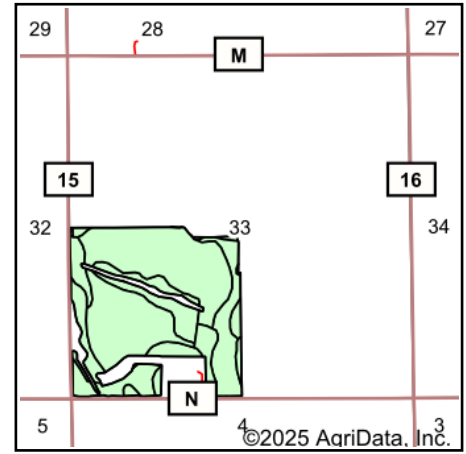
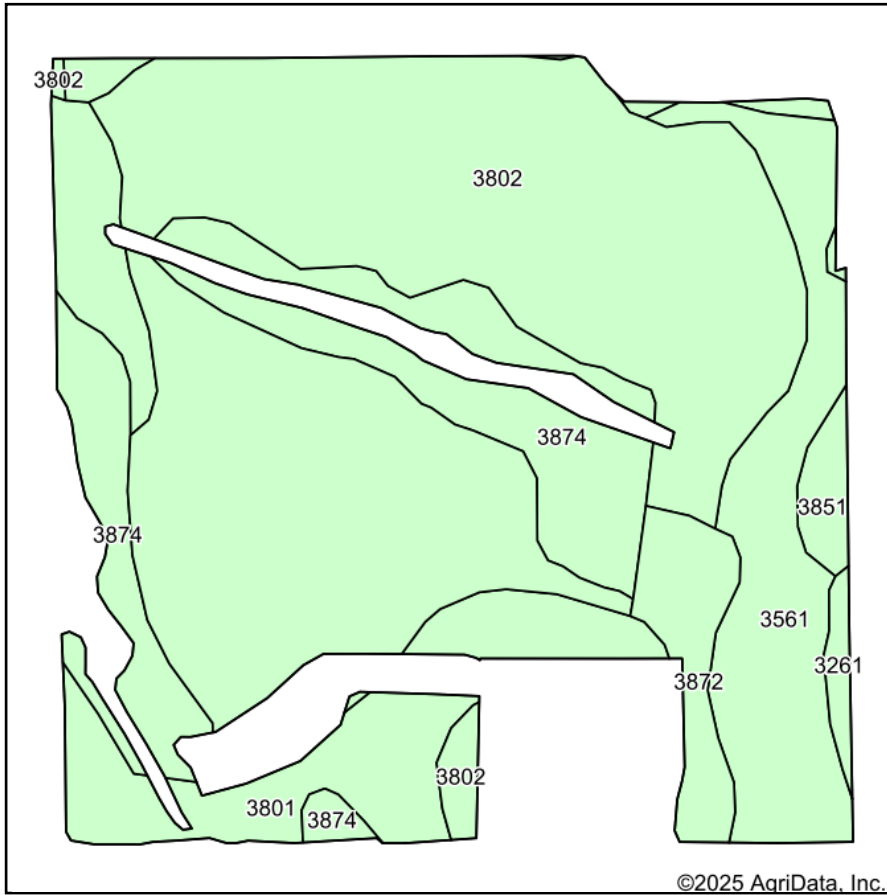


Soils Map



State: **Kansas**
 County: **Republic**
 Location: **33-2S-3W**
 Township: **Freedom**
 Acres: **132.36**
 Date: **10/14/2025**



Maps Provided By:



Area Symbol: KS157, Soil Area Version: 23

Code	Soil Description	Acres	Percent of field	Non-Irr Class *c	Irr Class *c	*n NCCPI Soybeans
3802	Crete silty clay loam, 3 to 7 percent slopes, eroded, loess plains and breaks	72.76	54.9%	IIIe	IIIe	55
3874	Hastings-Hobbs complex, 0 to 25 percent slopes	19.07	14.4%	VIe		66
3801	Crete silt loam, 1 to 3 percent slopes, loess plains and breaks	16.55	12.5%	Ile	Ile	64
3561	Hobbs silt loam, occasionally flooded	15.04	11.4%	IIw	IIw	79
3872	Hastings silty clay loam, 3 to 7 percent slopes, severely eroded	4.92	3.7%	IIIe	IIIe	54
3851	Geary-Hobbs silt loams, 0 to 30 percent slopes	2.99	2.3%	VIe		66
3261	Muir silt loam, very rarely flooded	1.03	0.8%	Iw	Iw	82
Weighted Average				3.25	*-	*n 60.9

*n: The aggregation method is "Weighted Average using all components"

*c: Using Capabilities Class Dominant Condition Aggregation Method

*- Irr Class weighted average cannot be calculated on the current soils data due to missing data.