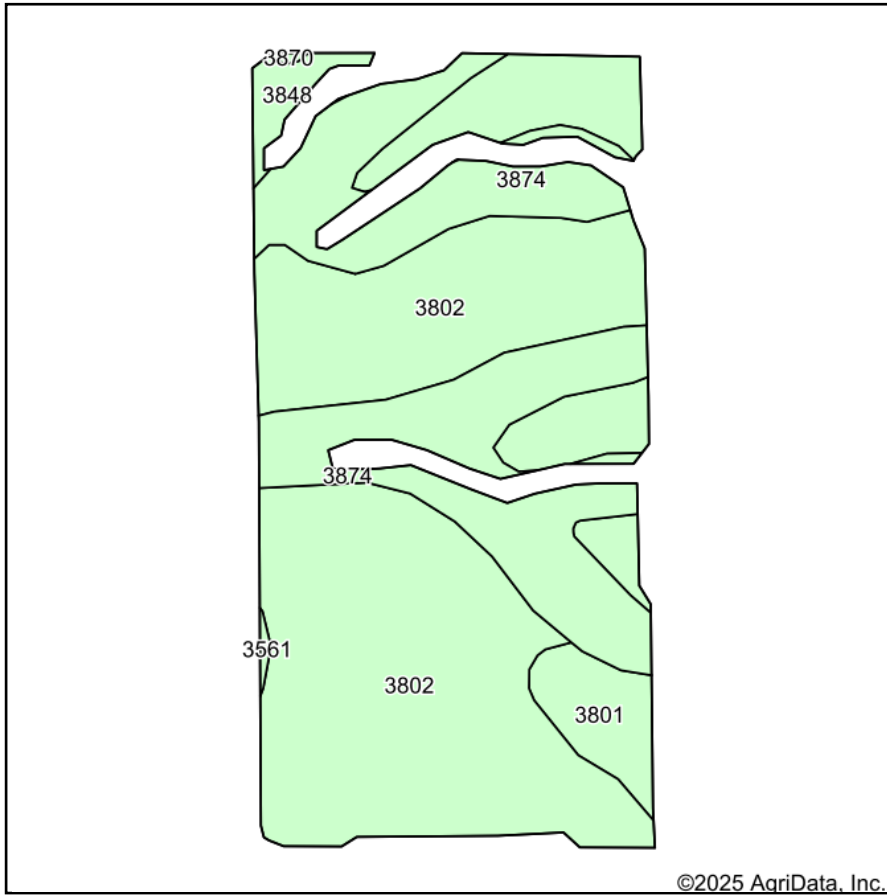
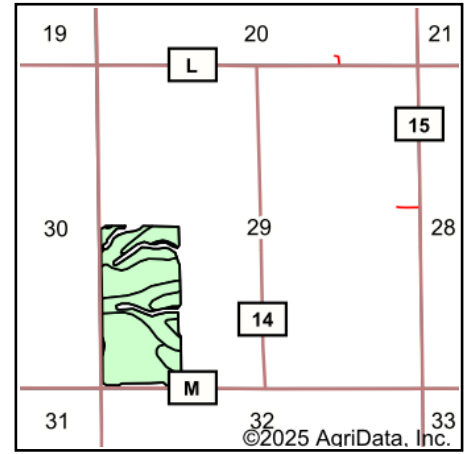


# Soils Map



Soils data provided by USDA and NRCS.



State: **Kansas**  
 County: **Republic**  
 Location: **29-2S-3W**  
 Township: **Freedom**  
 Acres: **70.14**  
 Date: **10/14/2025**



Maps Provided By:



Area Symbol: KS157, Soil Area Version: 23

Code	Soil Description	Acres	Percent of field	Non-Irr Class *c	Irr Class *c	*n NCCPI Soybeans
3802	Crete silty clay loam, 3 to 7 percent slopes, eroded, loess plains and breaks	45.27	64.5%	IIIe	IIIe	55
3874	Hastings-Hobbs complex, 0 to 25 percent slopes	20.31	29.0%	Vle		66
3801	Crete silt loam, 1 to 3 percent slopes, loess plains and breaks	3.05	4.3%	Ile	Ile	64
3848	Geary silty clay loam, 3 to 7 percent slopes, severely eroded	1.30	1.9%	IIIe	IIIe	55
3561	Hobbs silt loam, occasionally flooded	0.14	0.2%	IIw	IIw	79
3870	Hastings silty clay loam, 3 to 7 percent slopes, eroded	0.07	0.1%	IIIe	IIIe	58
Weighted Average				3.82	*-	*n 58.6

\*n: The aggregation method is "Weighted Average using all components"

\*c: Using Capabilities Class Dominant Condition Aggregation Method

\*- Irr Class weighted average cannot be calculated on the current soils data due to missing data.