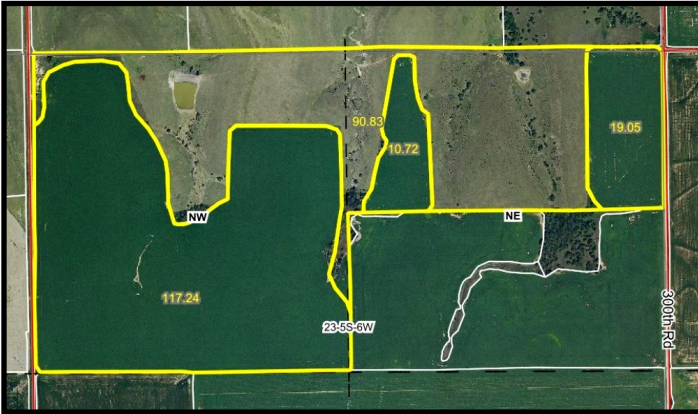


LAND AUCTION

237 Acres +/- of Combination Tillable/Pasture in Jewell County
When: Tuesday, December 2nd, 2025 @ 1:30pm
Where: Randall Community Center, Randall, Kansas
104 Main Street, Randall, Ks 66963



**Legal Description: N1/2 NE1/4;
NW1/4 23-5S-6W Jewell County, Ks**

**Location: Approx. 4 miles east of
Randall Ks on KS-28 then 2 miles
South on 290th Rd.**

**Taxes Approximately \$3,062.52 on
237.33 taxable acres +/-**

**Base Acres: Wheat 66.29/44
Soybeans 25.05/36 Grain Sorghum 40.29/90**

**Immediate possession on closing.
2025 taxes will be paid by Seller.**

**For complete sale bill, aerial
maps, and pictures, call or visit
our website!**

***Can't make the auction...Online
bidding available @ proxibid.com,
link will be on our website***



Announcements day of auction take precedence. Horizon Farm and Ranch Realty, LLC and its agents are Sellers Agents in this transaction. 10% down day of sale, balance in certified funds due by December 30, 2025. This sale will not be contingent to financing. Closing costs split 50/50. The property is sold "as is" with no guarantee or warranty. There is no acreage guarantee by the county FSA office, county treasurer or appraiser, Sellers, or auction firm.

HORIZON 
FARM & RANCH REALTY, LLC

RAY SWEARINGEN - BROKER/OWNER

- Farms & Ranches
- Auctions
- Value Assessments
- Rural Homes
- Hunting Property

**Office 785-825-1199
Toll Free 888-825-1199
www.horizonfarmranch.com**

***Seller: Richard P Anderson Trust
Levi Herrman- Agent 785-275-2285
Ray Swearingen- Broker/Owner
785-485-8498***



SCAN ME



Horizon Farm and Ranch Realty, LLC
3973 N. Ohio St.
Salina, KS 67401

Come Join Us for A Great
Land Auction!

Tuesday, December 2nd,
2025 @ 1:30pm

Place
Stamp
Here



Combination Tract
Call Levi Herrman 785-275-2285

Sale Held in Randall, Ks