



Advantage Trust

D Hoffman 28

Area: 106.30 ac

Farm Imagery



Grower: Ritchie Tarn
Farm: Advantage Trust
Field: D Hoffman 28
Number of Fields: 9
Area: 819.21 ac

— D Hoffman 28 (106.30 ac)
— Other Fields (712.90 ac)



One in = 2.2 miles
0.0 1.0 2.1 3.1 4.1 5.2

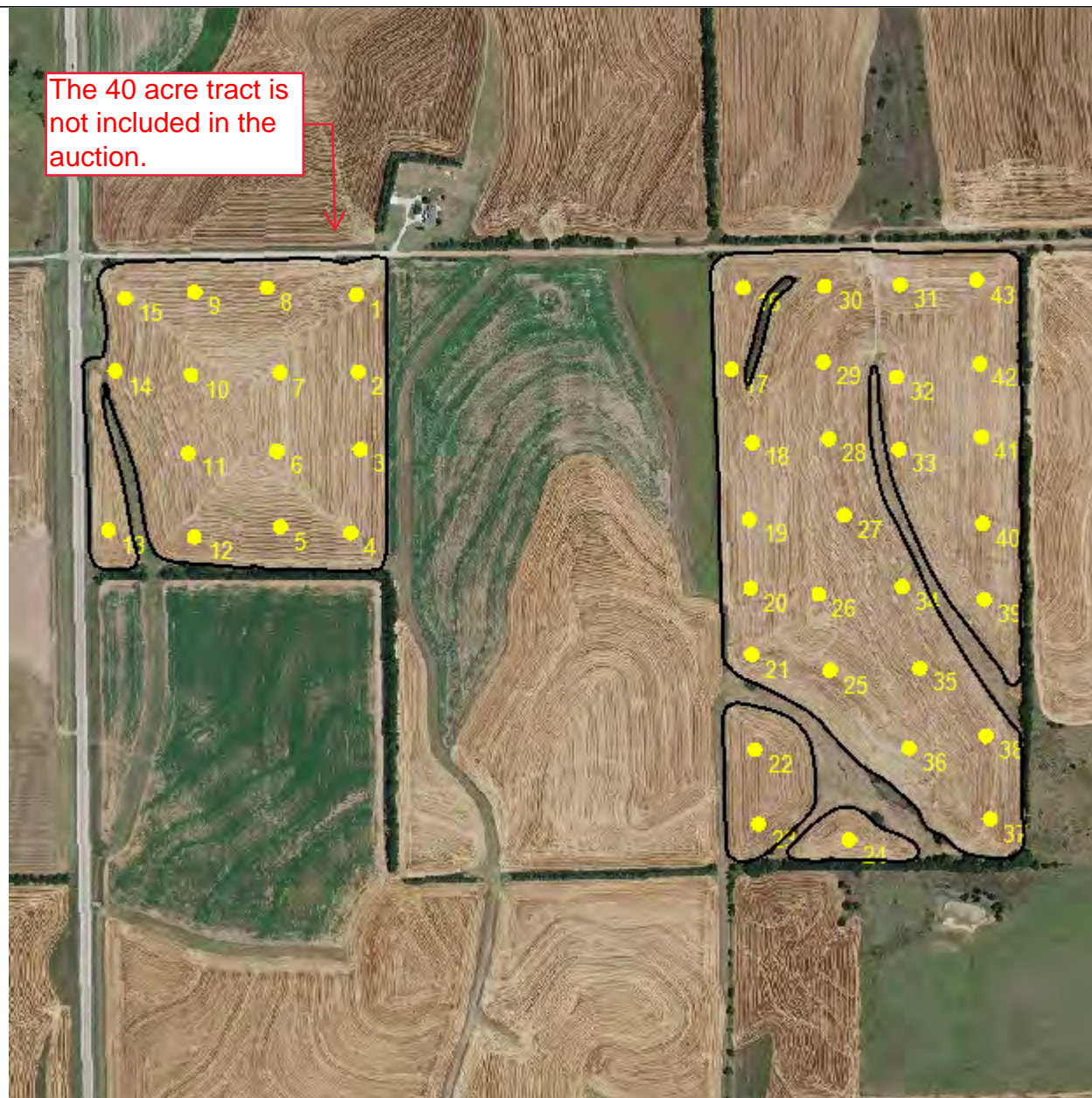


Soil Test Point Sample ID

Grower: Ritchie Tarn
Farm: Advantage Trust
Field: D Hoffman 28
Area: 106.30 ac
Event Date(s): 4/25/2019

The 40 acre tract is
not included in the
auction.

- Field Boundary
- Soil Test Points



One in = 716 feet

0 338 671 1007 1343 1679



Soil Type

Grower: Ritchie Tarn
Farm: Advantage Trust
Field: D Hoffman 28
Area: 106.30 ac

The 40 acre tract is
not included in the
auction.



- Field Boundary
- Soil Type
 - Clime silty clay loam, 3 to 7 percent slopes (11.2 ac) (10.5%)
 - Irwin silty clay loam, 1 to 3 percent slopes (48.7 ac) (45.8%)
 - Irwin silty clay loam, 3 to 7 percent slopes (46.4 ac) (43.6%)



One in = 716 feet

0 336 671 1007 1343 1679



Soil Test Results

Grower: Ritchie Tarn
Farm: Advantage Trust
Field: D Hoffman 28
Area: 106.30 ac
Event Date(s): 4/25/2019

Min:	5.4	6.3	1.8	9	27	4	169	1,676	218	19.2	6	0.5	41.9	1.9	7.2
Max:	8.1	7.1	3.3	61	93	21	325	5,217	1,248	29.2	12	2.4	90.5	3.4	37.2
Avg:	6.6	6.8	2.6	26	48	11	244	3,144	701	24.5	9	1.0	63.9	2.6	23.7

Sample ID	pH	BpH	OM	P Bray 1	P Bray 2	P Olsen	K	Ca	Mg	CEC	S ppm	Zn	%Ca	%K	%Mg
1	5.5	6.4	2.8	61	78		244	2,037	613	21.5	10	1.5	47.4	2.9	23.8
2	5.7	6.5	2.5	40	50		286	2,139	798	22.9	9	1.2	46.7	3.2	29.0
3	5.5	6.4	3.1	42	56		260	1,957	683	21.8	10	1.2	44.9	3.1	26.1
4	6.2	6.6	2.5	37	52		271	2,478	1,035	24.7	10	1.0	50.2	2.8	34.9
5	5.4	6.4	2.5	35	46		213	1,676	648	20.0	9	0.9	41.9	2.7	27.0
6	7.3	7.1	2.6	27	60	15	217	3,557	475	22.3	9	0.7	79.7	2.5	17.8
7	5.7	6.5	2.7	44	62		276	2,105	782	22.4	10	0.8	47.0	3.2	29.1
8	5.6	6.5	3.1	47	57		257	2,027	489	19.5	10	1.4	52.0	3.4	20.9
9	5.7	6.6	2.9	32	40		248	2,062	506	19.2	8	1.4	53.7	3.3	22.0
10	7.1	7.1	3.3	21	62		174	3,818	278	21.9	8	1.1	87.4	2.0	10.6
11	7.0	7.1	2.9	20	38		213	3,603	418	22.0	8	0.9	81.7	2.5	15.8
12	5.9	6.6	3.1	32	43		213	2,267	535	19.6	9	1.1	57.8	2.8	22.7
13	6.2	6.6	2.8	31	50		237	3,055	746	25.1	10	1.0	60.9	2.4	24.8
14	6.1	6.6	2.3	19	27		232	2,567	673	22.1	10	0.7	58.1	2.7	25.4
15	6.7	7.1	2.6	25	38		250	2,819	1,045	23.4	10	0.8	60.1	2.7	37.2
16	6.7	7.1	2.8	25	37		265	3,271	900	24.5	9	1.3	66.6	2.8	30.6
17	7.6	7.1	2.9	22	80	14	206	4,267	340	24.7	9	1.2	86.4	2.1	11.5
18	7.8	7.1	2.6	12	70	9	193	4,447	273	25.0	7	1.2	88.9	2.0	9.1
19	8.0	7.1	2.5	9	55	7	169	4,137	218	22.9	8	0.7	90.2	1.9	7.9
20	7.8	7.1	3.0	16	93	10	230	4,537	218	25.1	8	1.0	90.5	2.3	7.2
21	7.8	7.1	2.5	19	53	21	252	4,390	797	29.2	9	1.5	75.1	2.2	22.7
22	5.5	6.3	2.7	38	52		292	2,445	881	27.4	12	0.9	44.6	2.7	26.8
23	6.7	7.1	2.6	24	46		237	3,653	590	23.8	10	1.0	76.7	2.6	20.7

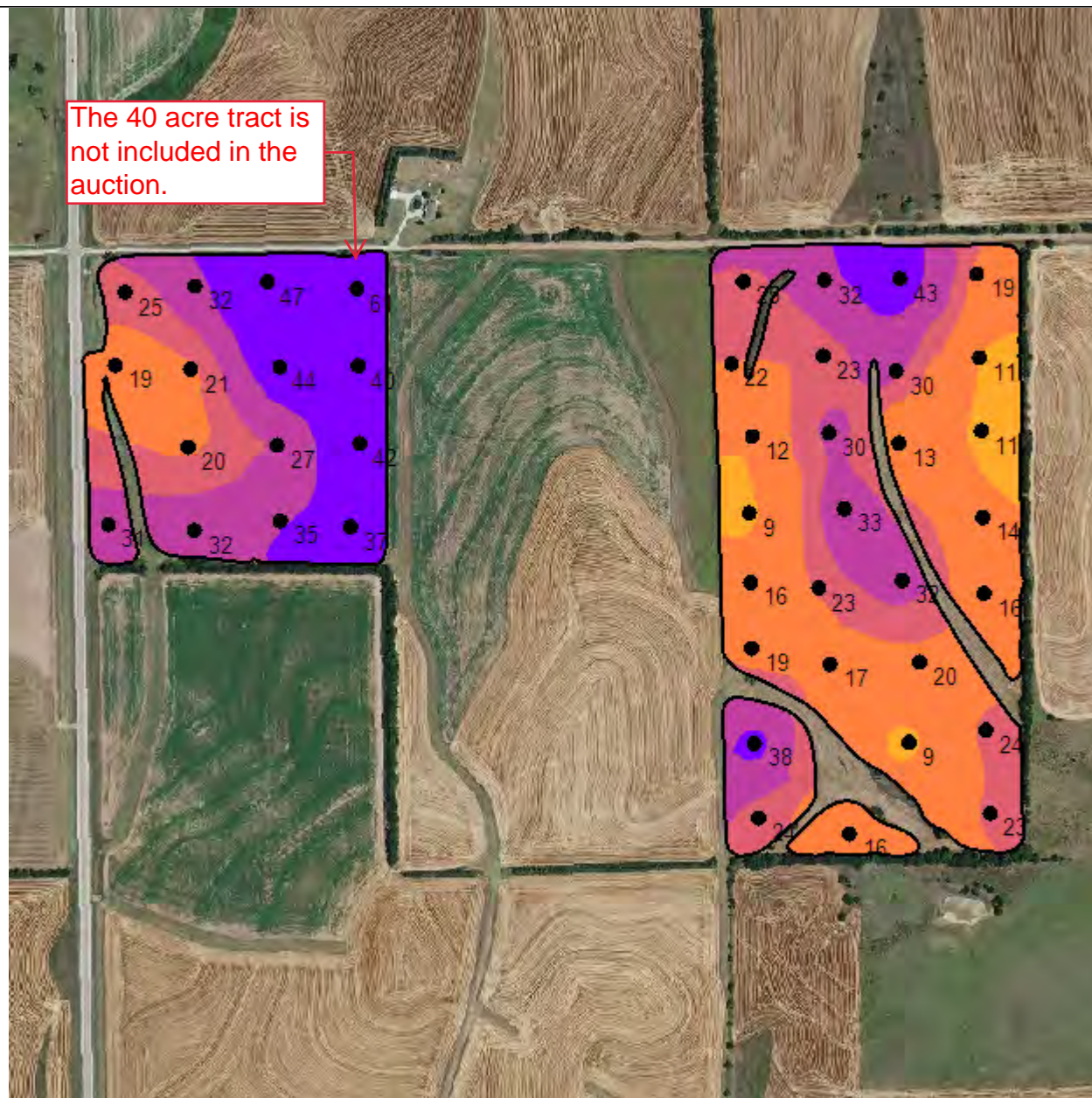
24	7.2	7.1	2.4	16	31		211	3,403	731	23.6	8	0.9	71.9	2.3	25.8
25	7.8	7.1	2.6	17	48	14	212	4,027	596	25.6	8	1.8	78.5	2.1	19.4
26	6.4	6.7	2.4	23	37		293	3,181	970	27.1	9	1.1	58.7	2.8	29.8
27	5.7	6.4	2.3	33	46		283	2,502	994	27.2	10	0.9	46.0	2.7	30.5
28	5.7	6.5	2.2	30	44		284	2,361	937	25.7	11	0.6	45.9	2.8	30.4
29	5.9	6.5	2.5	23	37		300	2,670	980	26.9	9	0.6	49.6	2.9	30.4
30	5.8	6.5	2.6	32	47		246	2,592	689	23.8	9	1.3	54.5	2.7	24.1
31	5.8	6.5	2.8	43	53		255	2,522	717	23.7	9	1.0	53.2	2.8	25.2
32	6.2	6.6	2.6	30	45		304	2,824	1,248	28.8	9	1.3	49.0	2.7	36.1
33	7.7	7.1	2.5	13	44	9	235	4,201	720	27.6	7	1.0	76.1	2.2	21.7
34	6.1	6.6	2.5	32	44		310	2,715	1,174	28.1	9	1.0	48.3	2.8	34.8
35	6.1	6.6	2.4	20	31		325	2,795	1,205	28.9	8	0.8	48.4	2.9	34.7
36	8.0	7.1	1.8	9	45	8	183	3,968	480	24.3	7	0.9	81.6	1.9	16.5
37	6.3	6.7	2.6	23	31		245	2,641	1,012	24.9	9	0.8	53.0	2.5	33.9
38	6.0	6.6	2.4	24	32		288	2,535	1,108	26.6	9	0.7	47.7	2.8	34.7
39	7.9	7.1	2.3	16	48	13	219	4,283	508	26.2	6	2.4	81.7	2.1	16.2
40	7.5	7.1	2.2	14	34	11	200	3,466	694	23.6	8	0.8	73.3	2.2	24.5
41	8.1	7.1	2.4	11	49	4	206	4,487	418	26.4	8	0.7	84.8	2.0	13.2
42	7.9	7.1	2.0	11	64	7	227	5,217	283	29.0	8	0.7	89.9	2.0	8.1
43	6.5	6.7	2.3	19	27		250	3,482	738	26.2	9	0.5	66.5	2.4	23.5

P Bray 1 Surface

Grower: Ritchie Tarn
Farm: Advantage Trust
Field: D Hoffman 28
Area: 106.30 ac
Event Date(s): 4/25/2019

Season: 2019
Min: 9.19 ppm
Avg: 25.63 ppm
Max: 59.77 ppm

The 40 acre tract is
not included in the
auction.



- Field Boundary
- P Bray 1 Surface ppm
- Very Low 0 - 5 ppm (0.0 ac) (0.0%)
- Low 5 - 12 ppm (4.5 ac) (4.2%)
- Medium 12 - 22 ppm (39.1 ac) (36.7%)
- Optimum 22 - 27 ppm (22.3 ac) (21.0%)
- High 27 - 35 ppm (22.6 ac) (21.3%)
- Excess > 35 ppm (17.8 ac) (16.8%)



One in = 716 feet

0 338 671 1007 1343 1679

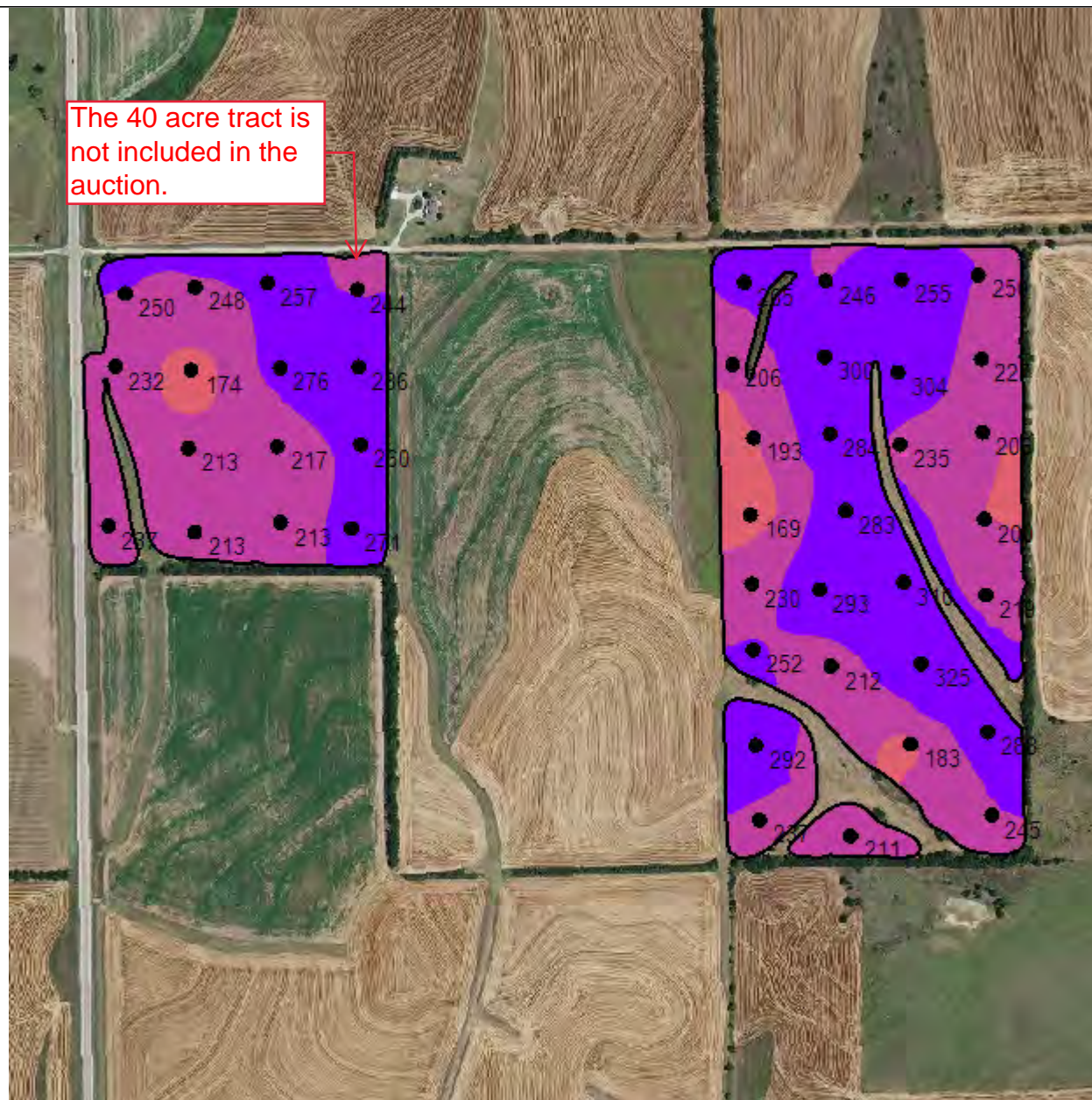


Potassium Surface

Grower: Ritchie Tarn
Farm: Advantage Trust
Field: D Hoffman 28
Area: 106.30 ac
Event Date(s): 4/25/2019

Season: 2019
Min: 169.77 ppm
Avg: 243.69 ppm
Max: 318.18 ppm

The 40 acre tract is not included in the auction.



- Field Boundary
- Potassium Surface ppm
- Very Low 0 - 40 ppm (0.0 ac) (0.0%)
- Low 40 - 80 ppm (0.0 ac) (0.0%)
- Medium 80 - 150 ppm (0.0 ac) (0.0%)
- Optimum 150 - 200 ppm (5.9 ac) (5.6%)
- High 200 - 250 ppm (54.1 ac) (50.9%)
- Very High > 250 ppm (46.3 ac) (43.5%)



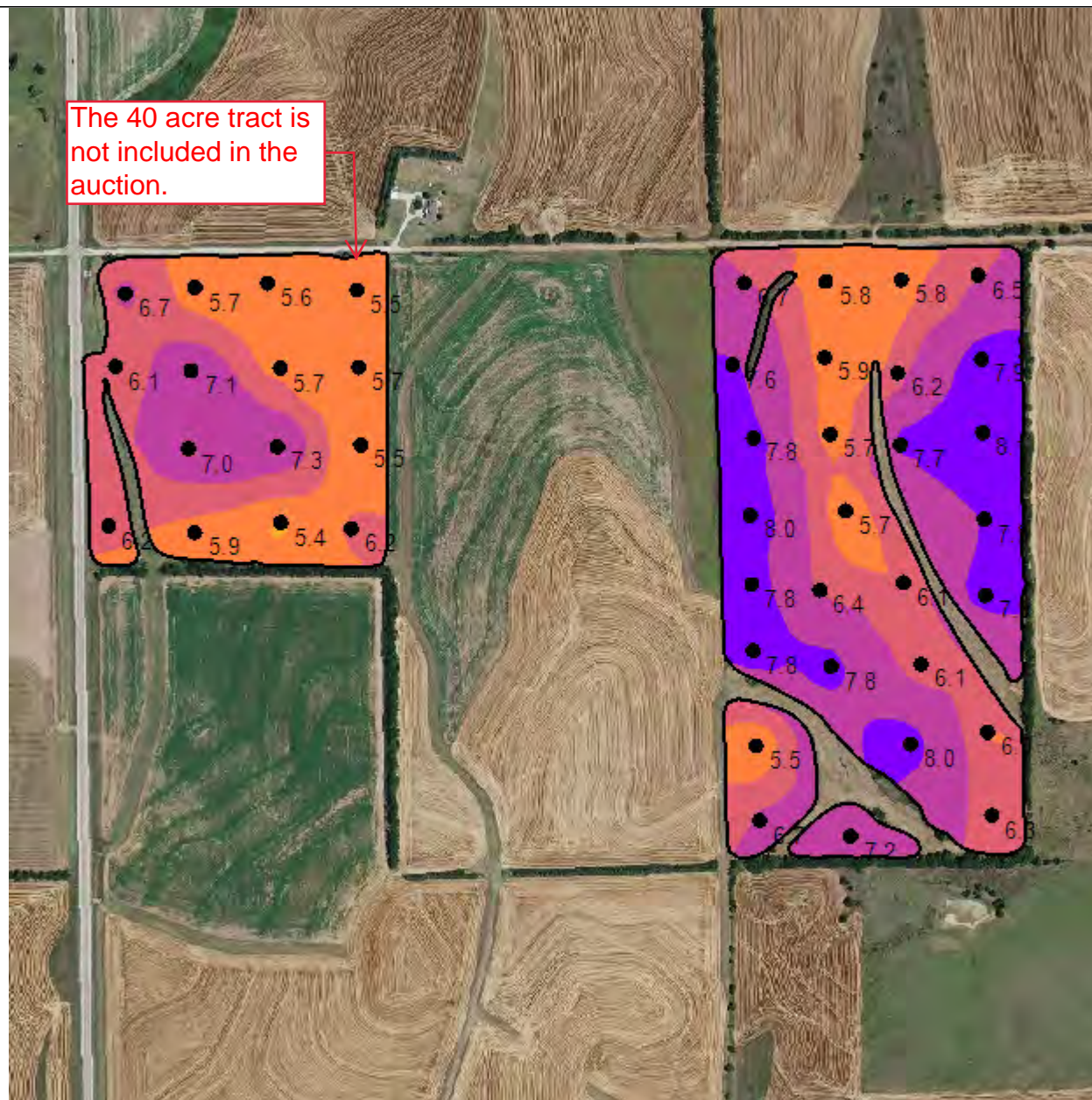
One in = 716 feet

0 338 671 1007 1343 1679



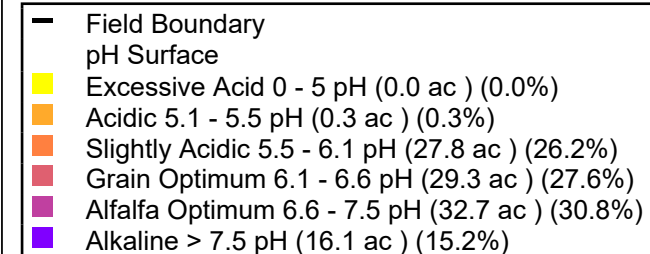
pH Surface

The 40 acre tract is not included in the auction.



Grower: Ritchie Tarn
Farm: Advantage Trust
Field: D Hoffman 28
Area: 106.30 ac
Event Date(s): 4/25/2019

Season: 2019
Min: 5.44
Avg: 6.62
Max: 8.10



One in = 716 feet

0 338 671 1007 1343 1679

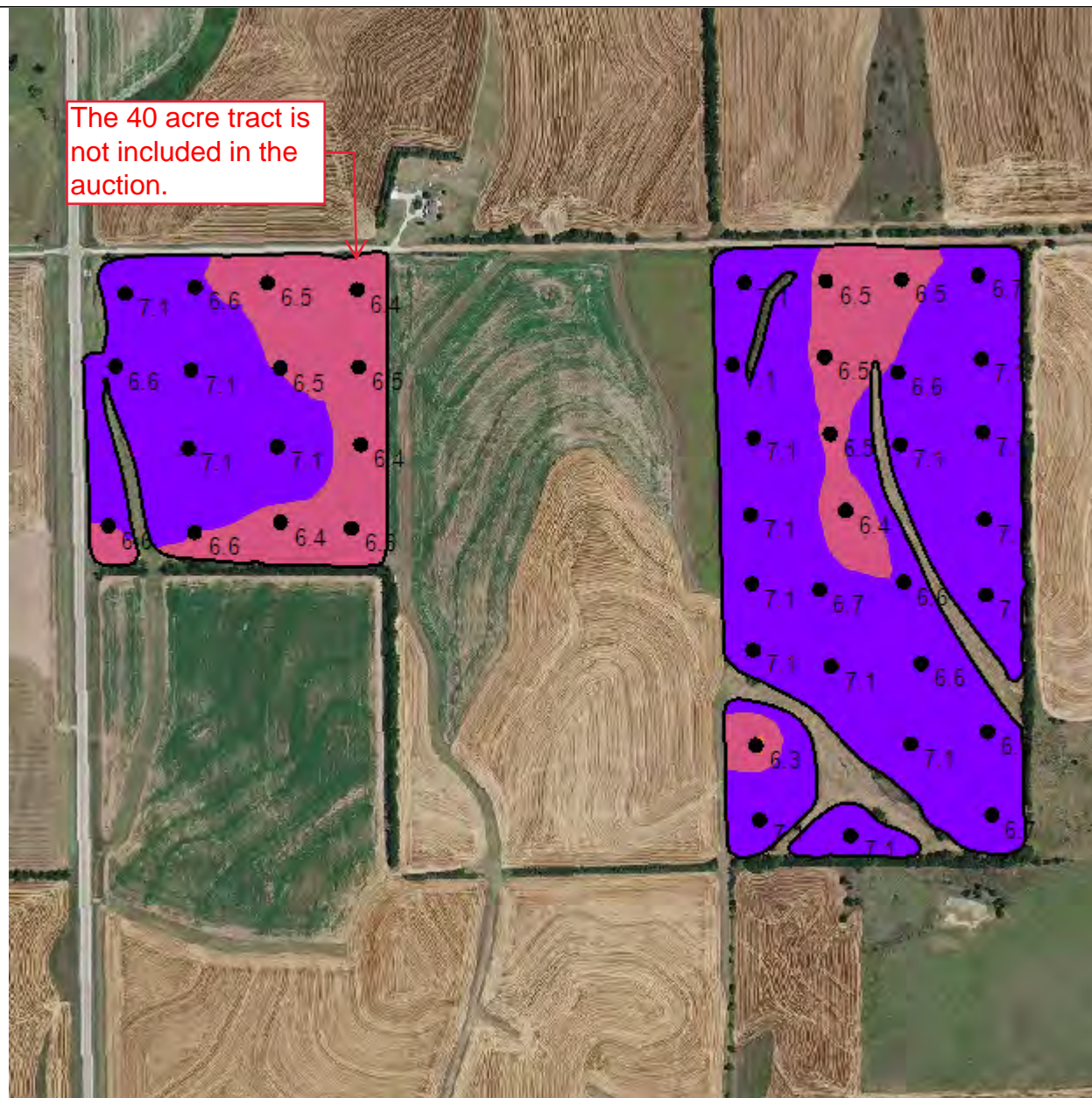


BpH Surface

Grower: Ritchie Tarn
Farm: Advantage Trust
Field: D Hoffman 28
Area: 106.30 ac
Event Date(s): 4/25/2019

Season: 2019
Min: 6.36
Avg: 6.79
Max: 7.14

The 40 acre tract is not included in the auction.



- Field Boundary
- BpH Surface
- 0.0 - 6.2 (0.0 ac) (0.0%)
- 6.2 - 6.4 (0.2 ac) (0.2%)
- 6.4 - 6.6 (26.9 ac) (25.3%)
- > 6.6 (79.2 ac) (74.5%)



One in = 716 feet

0 338 671 1007 1343 1679

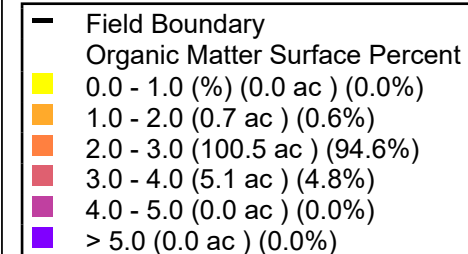
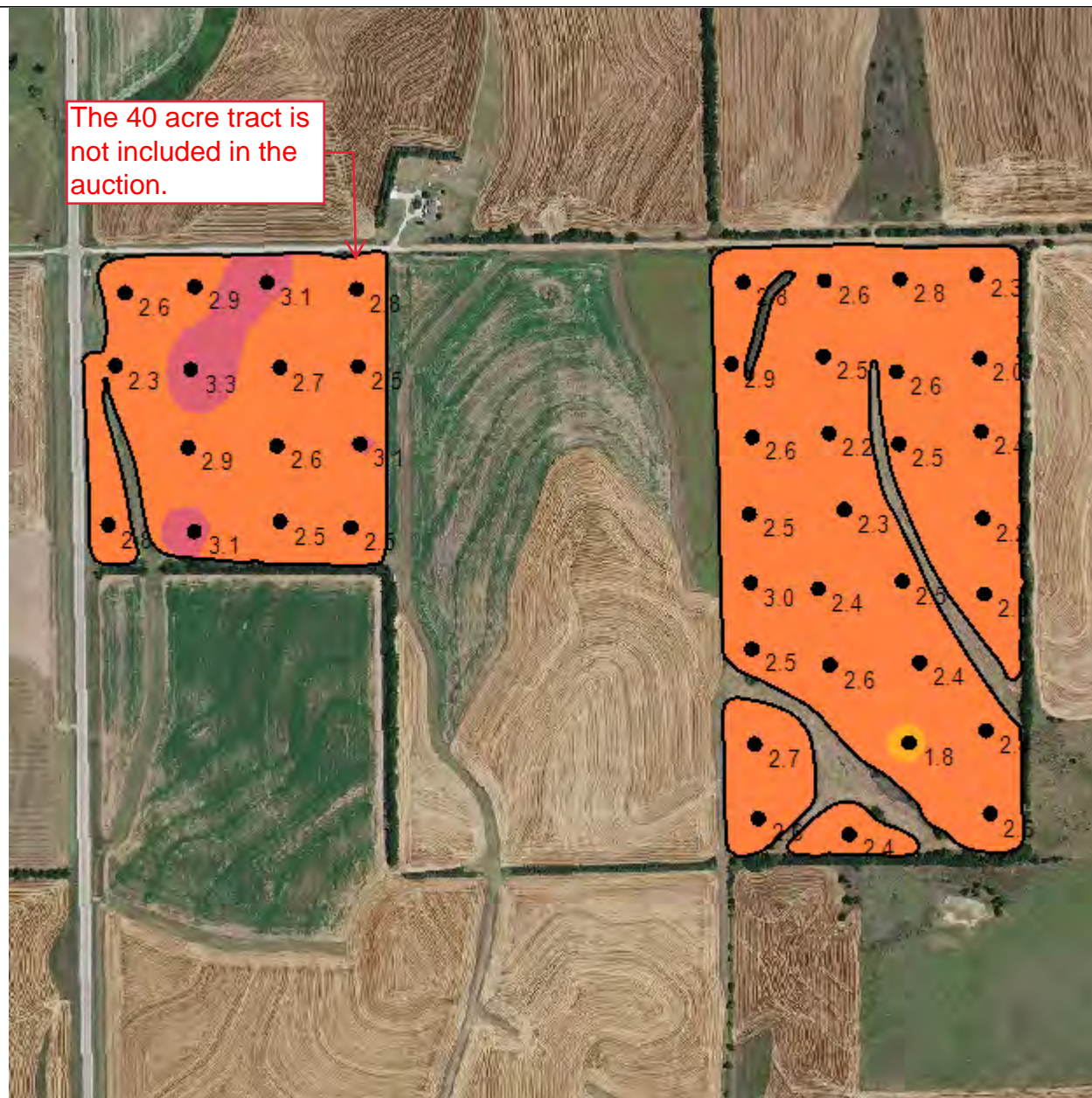


Organic Matter Surface

Grower: Ritchie Tarn
Farm: Advantage Trust
Field: D Hoffman 28
Area: 106.30 ac
Event Date(s): 4/25/2019

Season: 2019
Min: 1.87 Percent
Avg: 2.57 Percent
Max: 3.24 Percent

The 40 acre tract is not included in the auction.



One in = 716 feet

0 336 671 1007 1343 1679

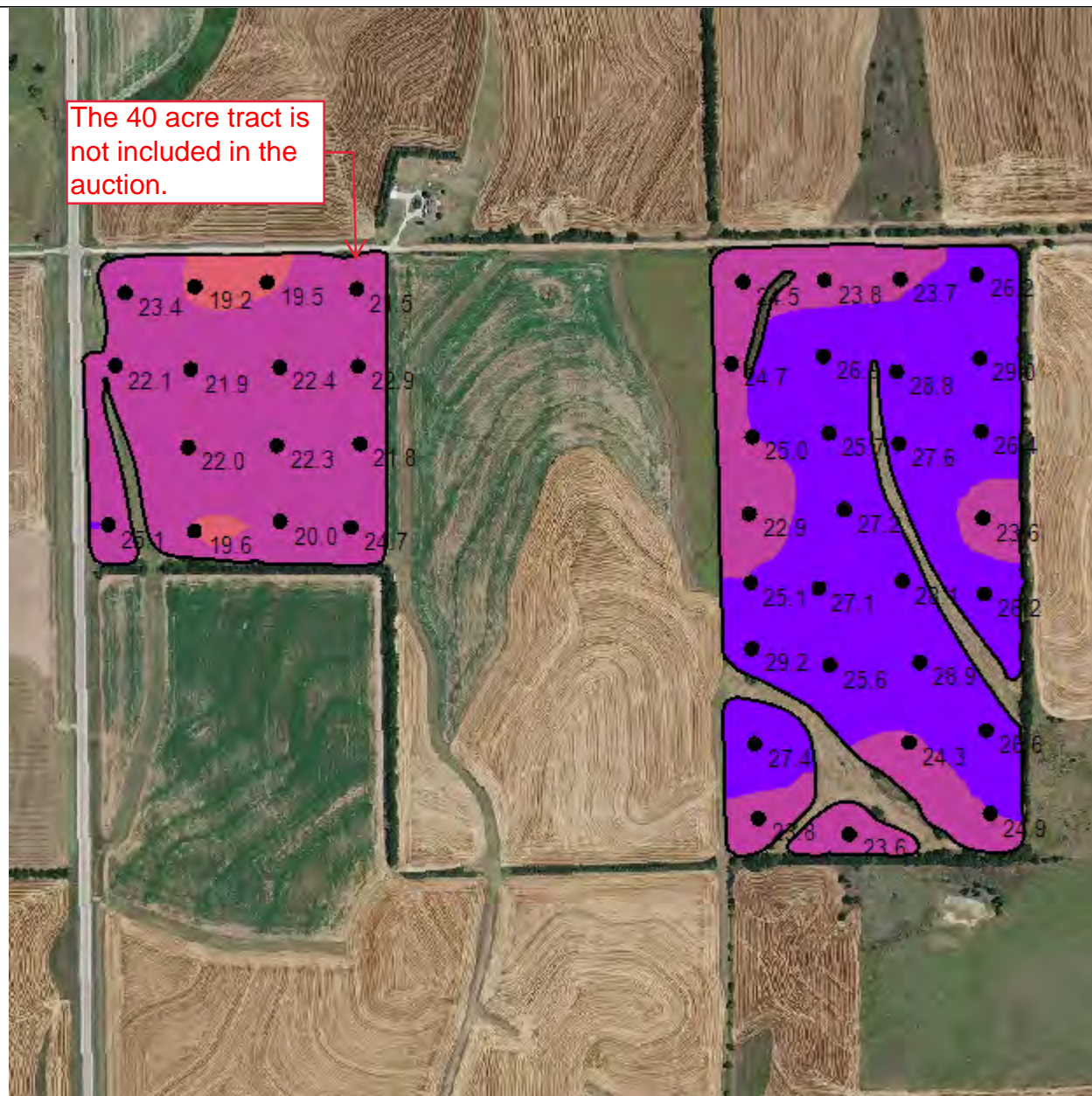


Cation Exchange Capacity Surface

Grower: Ritchie Tarn
Farm: Advantage Trust
Field: D Hoffman 28
Area: 106.30 ac
Event Date(s): 4/25/2019

Season: 2019
Min: 19.31 meq/100 g
Avg: 24.57 meq/100 g
Max: 28.95 meq/100 g

The 40 acre tract is not included in the auction.



- Field Boundary
- Cation Exchange Capacity Surface meq/100 g
- Very Light 0 - 5 (0.0 ac) (0.0%)
- Light 5 - 10 (0.0 ac) (0.0%)
- Optimum 1 10 - 15 (0.0 ac) (0.0%)
- Optimum 2 15 - 20 (2.6 ac) (2.4%)
- Heavy 20 - 25 (54.9 ac) (51.6%)
- Very Heavy > 25 (48.8 ac) (45.9%)



One in = 716 feet

0 338 671 1007 1343 1679

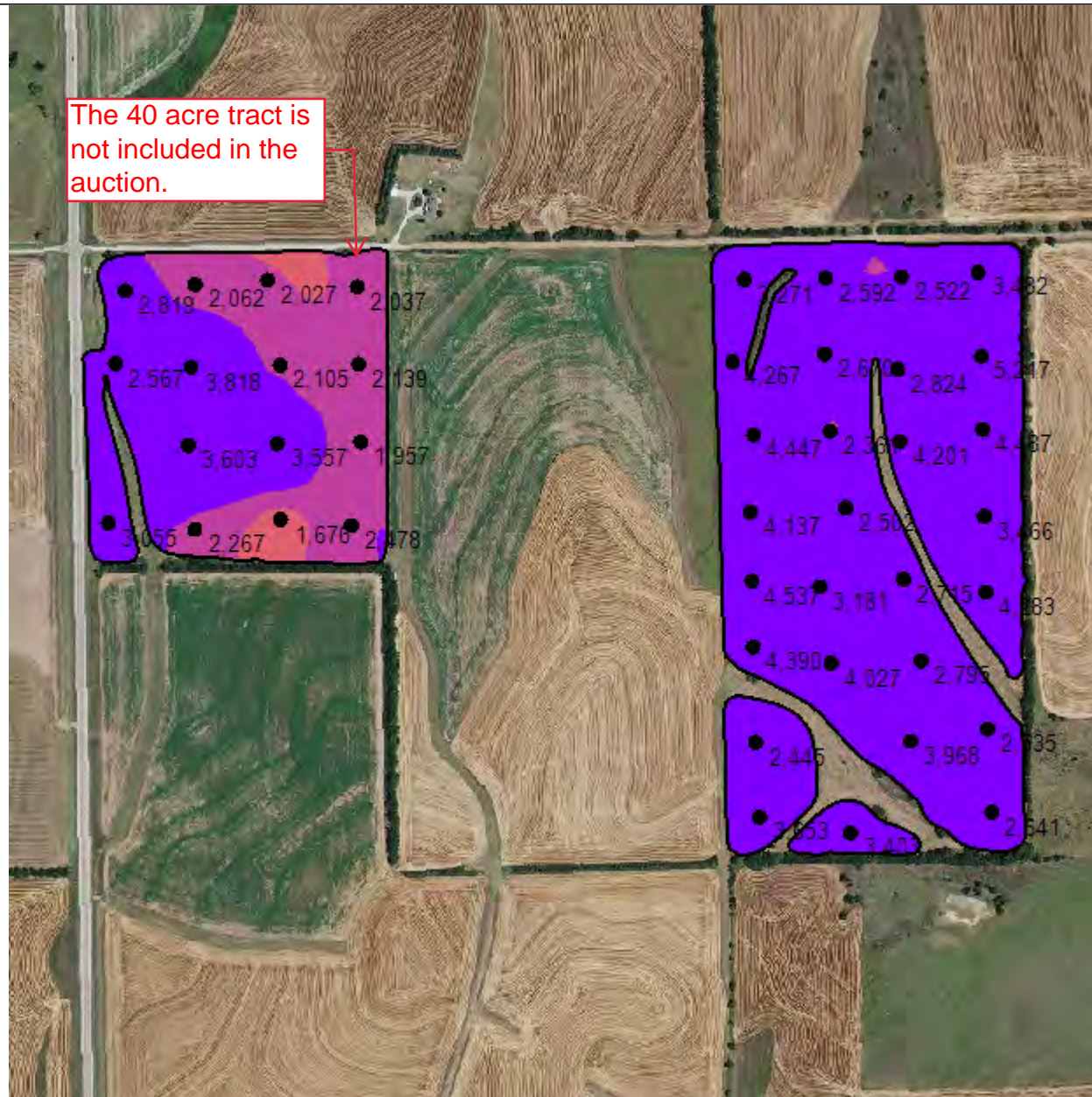


Calcium Surface

Grower: Ritchie Tarn
Farm: Advantage Trust
Field: D Hoffman 28
Area: 106.30 ac
Event Date(s): 4/25/2019

Season: 2019
Min: 1,720.42 ppm
Avg: 3,153.35 ppm
Max: 5,170.47 ppm

The 40 acre tract is not included in the auction.



- Field Boundary
- Calcium Surface ppm
- Very Low 0 - 500 ppm (0.0 ac) (0.0%)
- Low 500 - 1000 ppm (0.0 ac) (0.0%)
- Medium 1000 - 1500 ppm (0.0 ac) (0.0%)
- Optimum 1500 - 2000 ppm (2.5 ac) (2.4%)
- High 2000 - 2500 ppm (16.3 ac) (15.3%)
- Very High > 2500 ppm (87.5 ac) (82.3%)



One in = 716 feet

0 338 671 1007 1343 1679

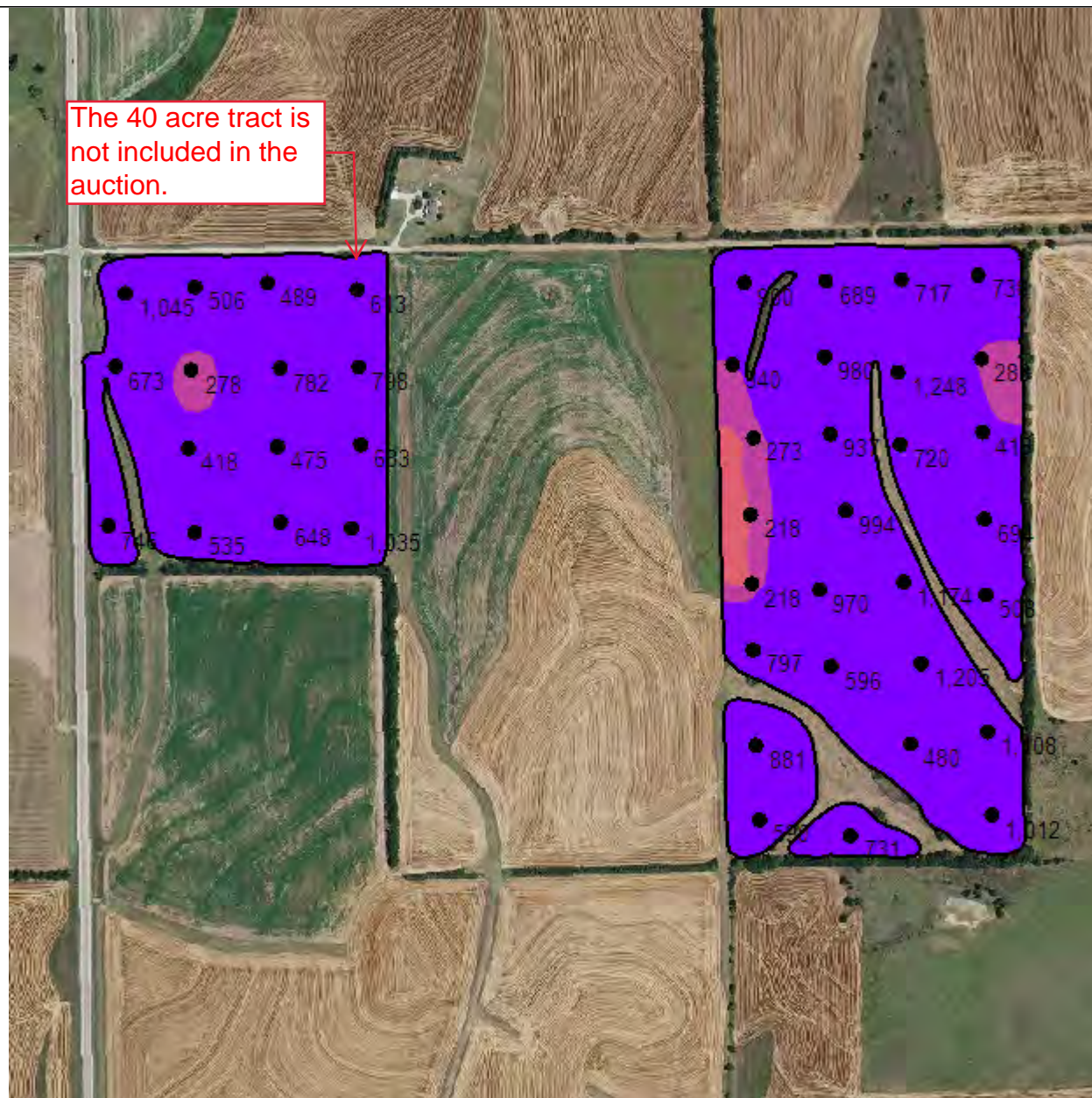


Magnesium Surface

Grower: Ritchie Tarn
Farm: Advantage Trust
Field: D Hoffman 28
Area: 106.30 ac
Event Date(s): 4/25/2019

Season: 2019
Min: 185.06 ppm
Avg: 699.89 ppm
Max: 1,193.28 ppm

The 40 acre tract is not included in the auction.



- Field Boundary
- Magnesium Surface ppm
- Very Low 0 - 37 ppm (0.0 ac) (0.0%)
- Low 37 - 75 ppm (0.0 ac) (0.0%)
- Medium 75 - 120 ppm (0.0 ac) (0.0%)
- Optimum 120 - 250 ppm (2.0 ac) (1.9%)
- High 250 - 375 ppm (4.8 ac) (4.5%)
- Excess > 375 ppm (99.6 ac) (93.7%)



One in = 716 feet

0 336 671 1007 1343 1679



Sulfur - ppm

Grower: Ritchie Tarn
Farm: Advantage Trust
Field: D Hoffman 28
Area: 106.30 ac
Event Date(s): 4/25/2019

Season: 2019
Min: 6.16 ppm
Avg: 8.84 ppm
Max: 11.77 ppm

The 40 acre tract is not included in the auction.



- Field Boundary
- Sulfur Surface ppm
- Very Low 0 - 5 ppm (0.0 ac) (0.0%)
- Low 5 - 10 ppm (99.5 ac) (93.6%)
- Medium 10 - 15 ppm (6.8 ac) (6.4%)
- Optimum 15 - 20 ppm (0.0 ac) (0.0%)
- High 20 - 25 ppm (0.0 ac) (0.0%)
- Very High > 25 ppm (0.0 ac) (0.0%)



One in = 716 feet

0 338 671 1007 1343 1679

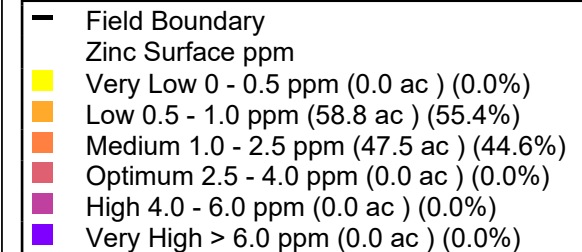


Zinc Surface

Grower: Ritchie Tarn
Farm: Advantage Trust
Field: D Hoffman 28
Area: 106.30 ac
Event Date(s): 4/25/2019

Season: 2019
Min: 0.50 ppm
Avg: 1.02 ppm
Max: 2.30 ppm

The 40 acre tract is not included in the auction.



One in = 716 feet
0 336 671 1007 1343 1679

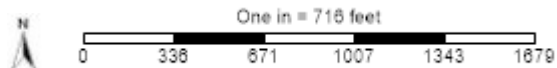
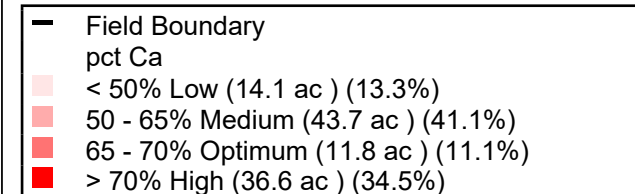
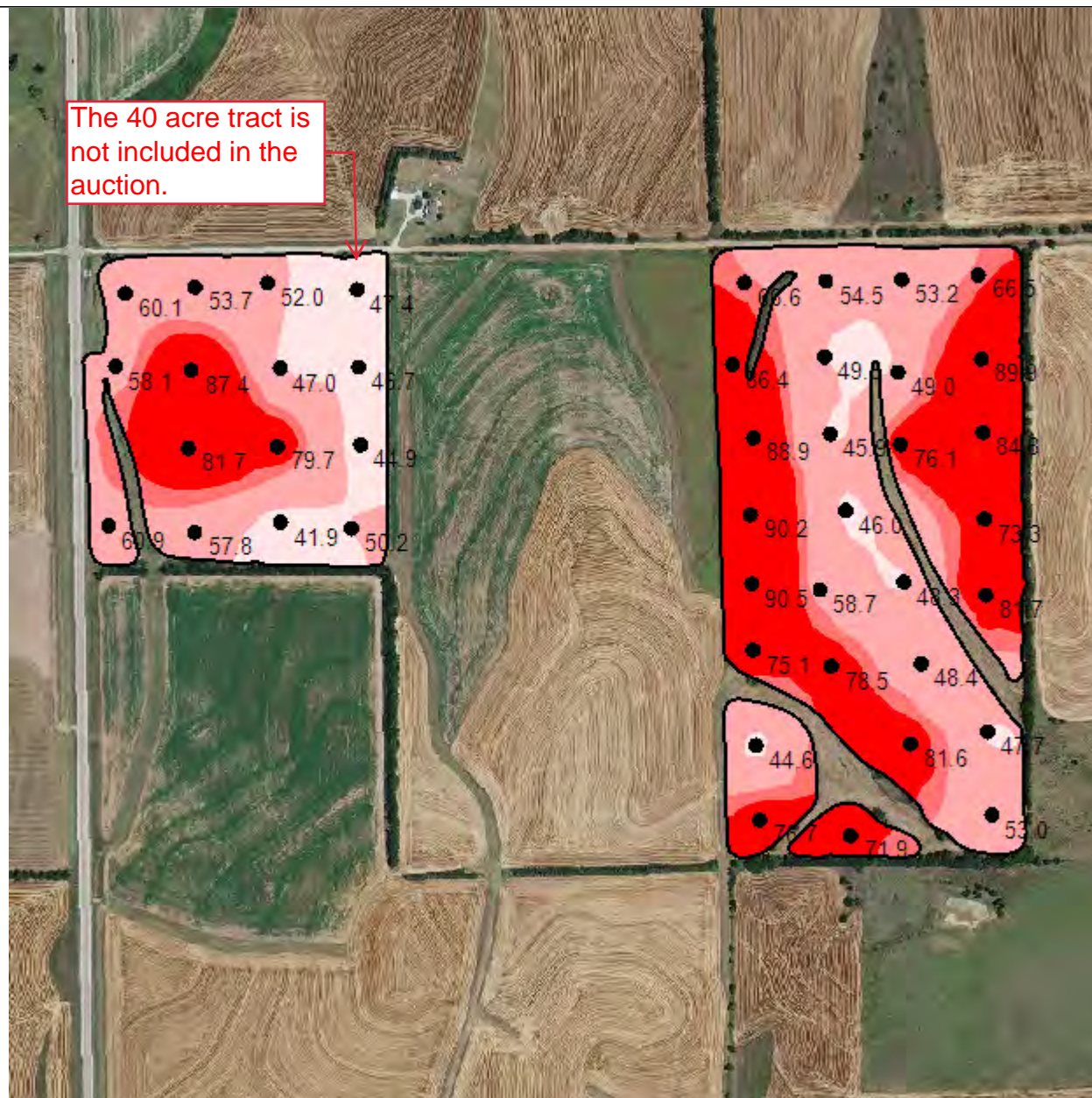


pct Ca

Grower: Ritchie Tarn
Farm: Advantage Trust
Field: D Hoffman 28
Area: 106.30 ac
Event Date(s): 4/25/2019

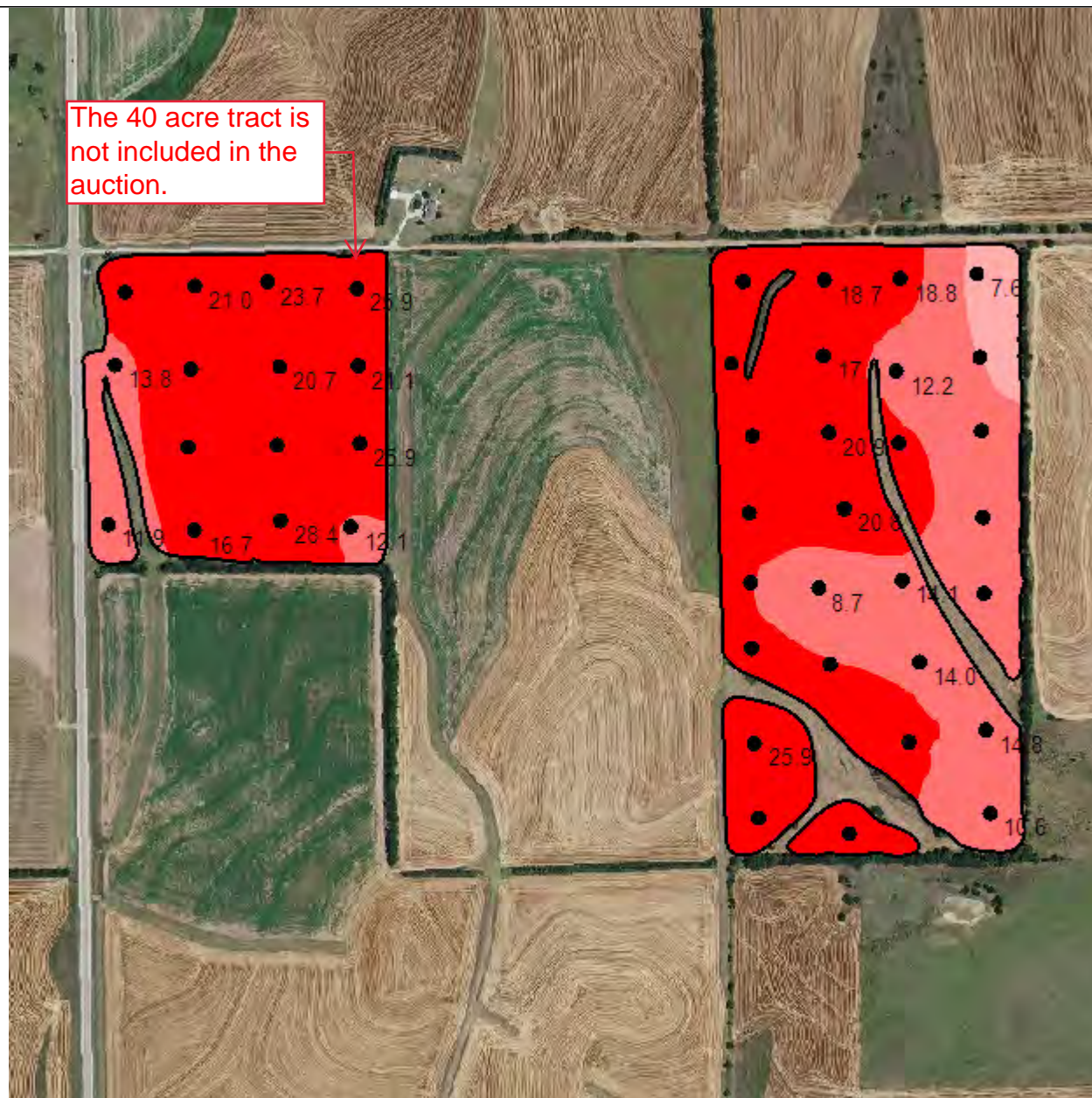
Season: 2019
Min: 42.63
Avg: 64.07
Max: 92.20

The 40 acre tract is not included in the auction.



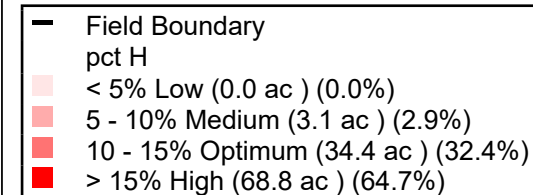
pct H

The 40 acre tract is not included in the auction.



Grower: Ritchie Tarn
Farm: Advantage Trust
Field: D Hoffman 28
Area: 106.30 ac
Event Date(s): 4/25/2019

Season: 2019
Min: 7.50
Avg: 17.29
Max: 27.41



One in = 716 feet

0 336 671 1007 1343 1679



pct K

Grower: Ritchie Tarn
Farm: Advantage Trust
Field: D Hoffman 28
Area: 106.30 ac
Event Date(s): 4/25/2019

Season: 2019
Min: 1.90
Avg: 2.56
Max: 3.39

The 40 acre tract is
not included in the
auction.



- Field Boundary
- pct K
- < 1% Low (0.0 ac) (0.0%)
- 1 - 2% Medium (3.4 ac) (3.2%)
- 2 - 7% Optimum (102.9 ac) (96.8%)
- > 7% High (0.0 ac) (0.0%)



One in = 716 feet

0 336 671 1007 1343 1679

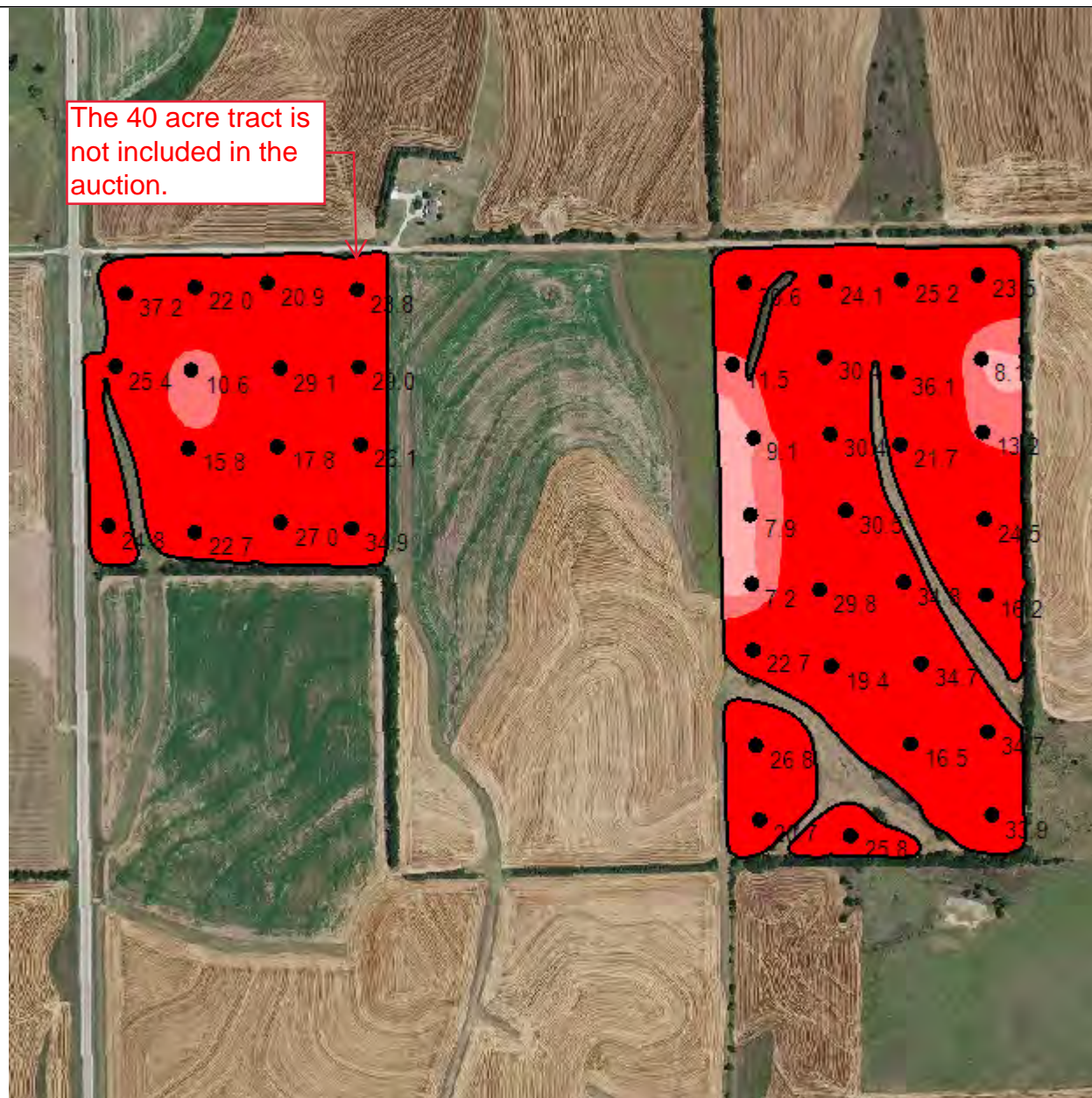


pct Mg

Grower: Ritchie Tarn
Farm: Advantage Trust
Field: D Hoffman 28
Area: 106.30 ac
Event Date(s): 4/25/2019

Season: 2019
Min: 6.80
Avg: 23.57
Max: 37.12

The 40 acre tract is not included in the auction.



- Field Boundary
- pct Mg
- < 5% Low (0.0 ac) (0.0%)
- 5 - 10% Medium (3.4 ac) (3.2%)
- 10 - 15% Optimum (7.0 ac) (6.6%)
- > 15% High (96.0 ac) (90.3%)



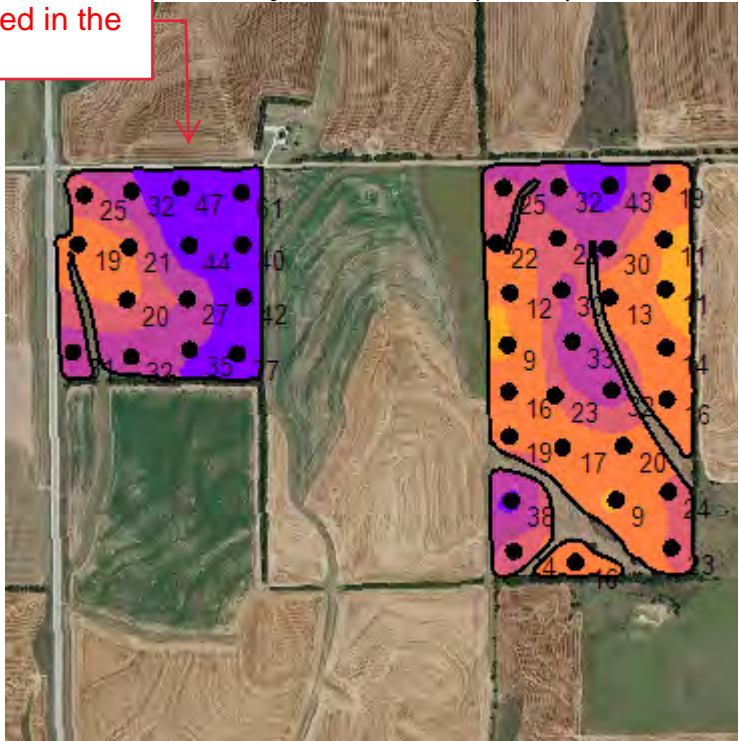
One in = 716 feet

0 336 671 1007 1343 1679



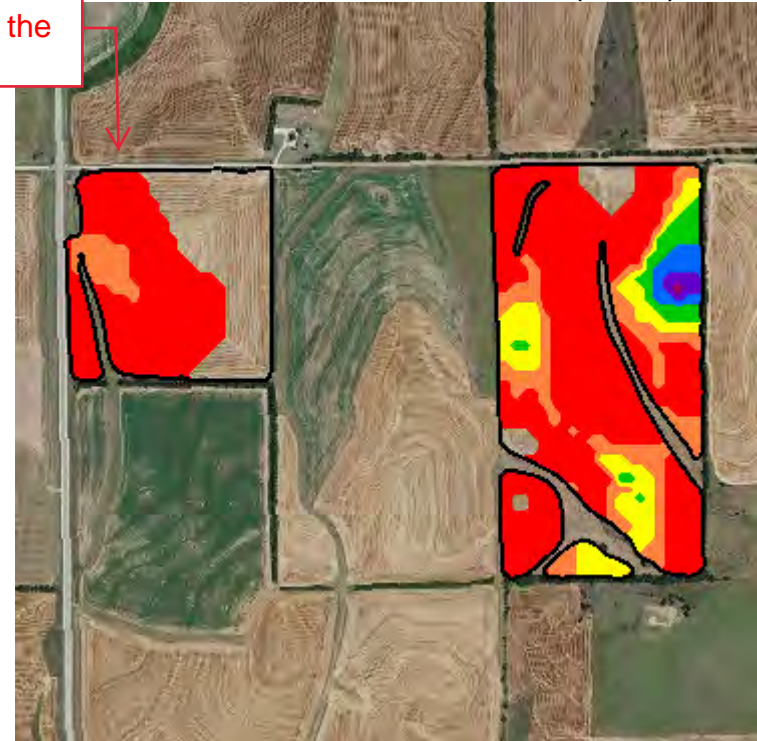
The 40 acre tract is not included in the auction.

P Bray 1 Surface (2019)



The 40 acre tract is not included in the auction.

P Product Recommendation (2019)



Grower: Ritchie Tarn
Farm: Advantage Trust
Field: D Hoffman 28
Area: 106.30 ac

Event Date(s): 4/25/2019
Season: 2019
Min: 9.19 ppm
Avg: 25.63 ppm
Max: 59.77 ppm

Season: 2019
Min Rate: 50.00 lb/ac
Avg Rate: 55.39 lb/ac
Max Rate: 110.00 lb/ac
Total Product: 4,852.31 lb
Applied Area: 87.60 ac
Product: 11-52-0 MAP

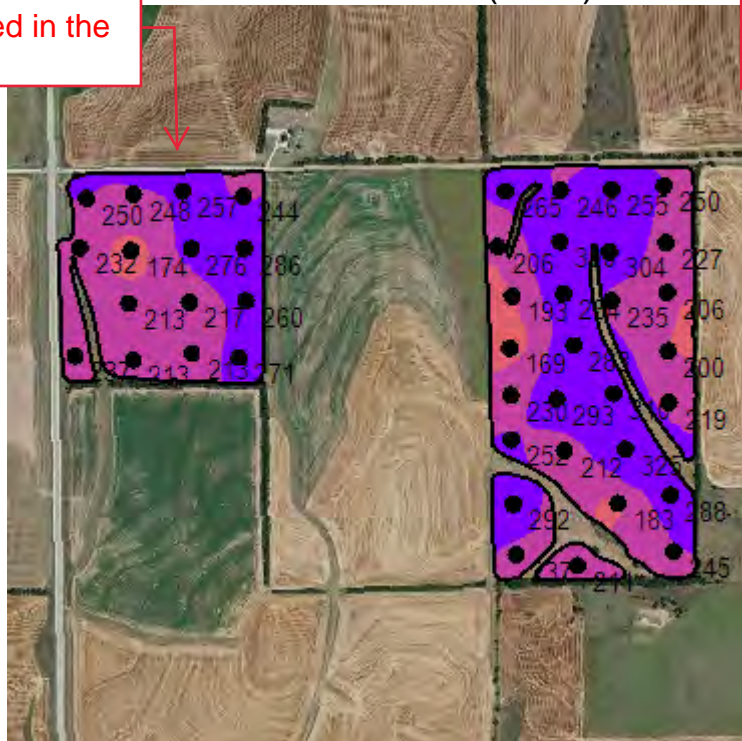
Order Id: 763329
Order Task Id: 21104330
Crop - Year 1: SOYBEANS
Purpose - Year 1: Dry Grain
Yield Goal - Year 1: 40
ICP?: No
Task: Main Recs - P Rec

—	Field Boundary
—	P Bray 1 Surface ppm
Yellow	Very Low 0 - 5 ppm (0.0 ac) (0.0%)
Orange	Low 5 - 12 ppm (4.5 ac) (4.2%)
Light Orange	Medium 12 - 22 ppm (39.1 ac) (36.7%)
Pink	Optimum 22 - 27 ppm (22.3 ac) (21.0%)
Purple	High 27 - 35 ppm (22.6 ac) (21.3%)
Dark Purple	Excess > 35 ppm (17.8 ac) (16.8%)

—	Field Boundary
—	P Product Recommendation lb/ac
Red	50 (61.7 ac) (58.0%)
Orange	60 (13.1 ac) (12.3%)
Yellow	70 (7.5 ac) (7.1%)
Green	80 (3.1 ac) (2.9%)
Blue	90 (1.5 ac) (1.4%)
Purple	100 (0.7 ac) (0.6%)
Dark Purple	110 (0.1 ac) (0.1%)

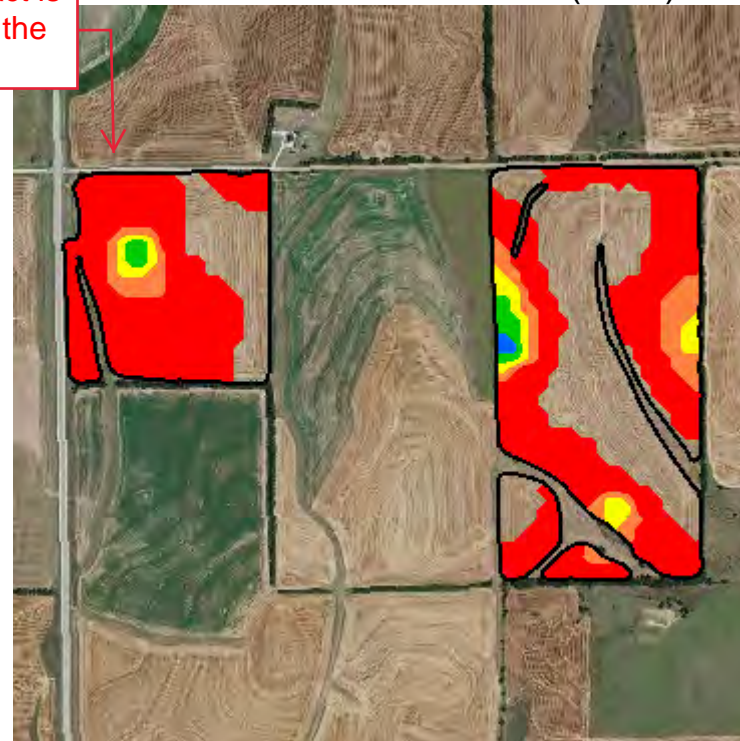
The 40 acre tract is not included in the auction.

Potassium Surface (2019)



The 40 acre tract is not included in the auction.

K Product Recommendation (2019)



Grower: Ritchie Tarn
Farm: Advantage Trust
Field: D Hoffman 28
Area: 106.30 ac

Event Date(s): 4/25/2019
Season: 2019
Min: 169.77 ppm
Avg: 243.69 ppm
Max: 318.18 ppm

Season: 2019
Min Rate: 40.00 lb/ac
Avg Rate: 42.72 lb/ac
Max Rate: 80.00 lb/ac
Total Product: 2,935.85 lb
Applied Area: 68.72 ac
Product: 0-0-60

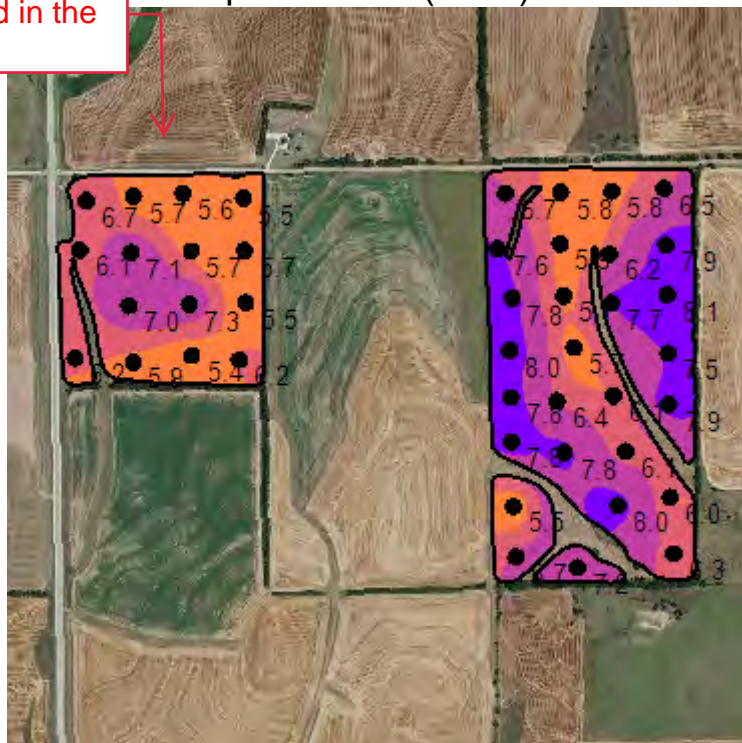
Order Id: 763329
Order Task Id: 21104324
Crop - Year 1: Soybeans
Crop Purpose - Year 1: Dry Grain
Yield Goal - Year 1: 40
Task: Midwest Labs - K Rec

—	Field Boundary
	Potassium Surface ppm
■	Very Low 0 - 40 ppm (0.0 ac) (0.0%)
■	Low 40 - 80 ppm (0.0 ac) (0.0%)
■	Medium 80 - 150 ppm (0.0 ac) (0.0%)
■	Optimum 150 - 200 ppm (5.9 ac) (5.6%)
■	High 200 - 250 ppm (54.1 ac) (50.9%)
■	Very High > 250 ppm (46.3 ac) (43.5%)

—	Field Boundary
	K Product Recommendation lb/ac
■	40 (56.9 ac) (53.5%)
■	50 (7.1 ac) (6.6%)
■	60 (3.0 ac) (2.8%)
■	70 (1.4 ac) (1.4%)
■	80 (0.3 ac) (0.3%)

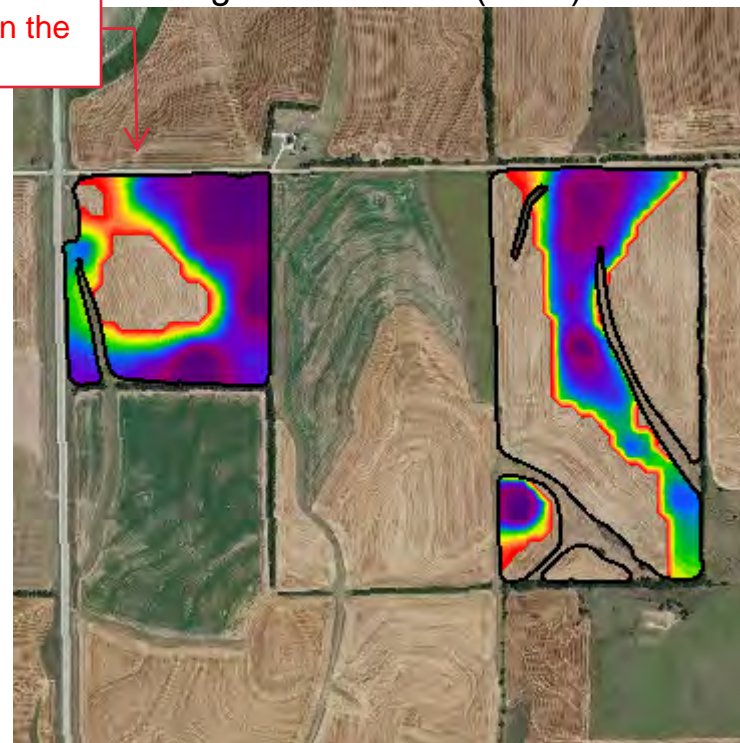
The 40 acre tract is not included in the auction.

pH Surface (2019)



The 40 acre tract is not included in the auction.

Ag Lime 50 ECC (2019)



Grower: Ritchie Tarn
Farm: Advantage Trust
Field: D Hoffman 28
Area: 106.30 ac

Event Date(s): 4/25/2019
Season: 2019
Min: 5.44
Avg: 6.62
Max: 8.10

Season: 2019
Min Rate: 500.00 lb/ac
Avg Rate: 7,880.88 lb/ac
Max Rate: 12,800.00 lb/ac
Total Product: 415,407.52 lb
Applied Area: 52.71 ac
Product: Lime, Ag

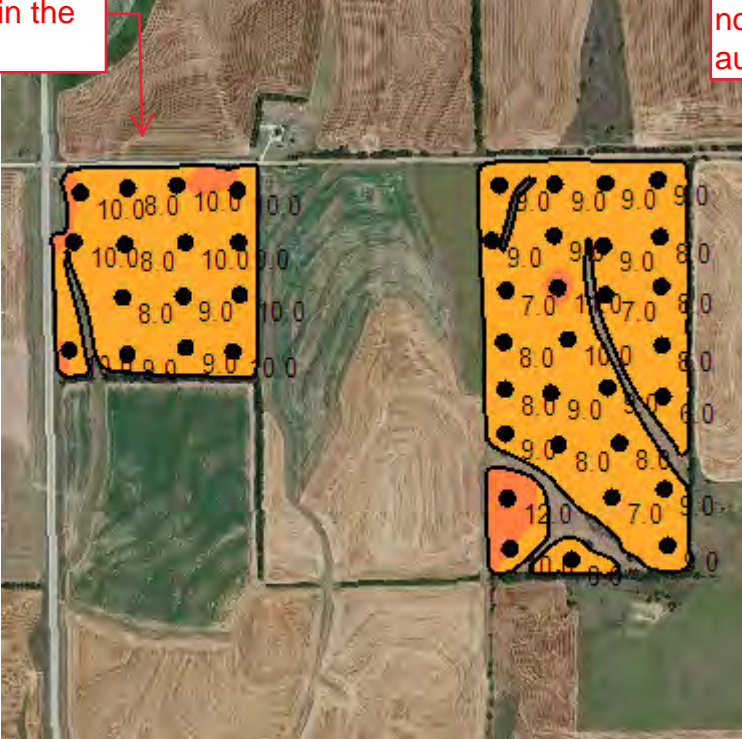
Order Id: 763329
Order Task Id: 21104321
Crop - Year 1: Soybeans
Crop Purpose - Year 1: Dry Grain
Task: Midwest Labs - Lime Rec

—	Field Boundary
—	pH Surface
Yellow	Excessive Acid 0 - 5 pH (0.0 ac) (0.0%)
Orange	Acidic 5.1 - 5.5 pH (0.3 ac) (0.3%)
Light Orange	Slightly Acidic 5.5 - 6.1 pH (27.8 ac) (26.2%)
Light Red	Grain Optimum 6.1 - 6.6 pH (29.3 ac) (27.6%)
Pink	Alfalfa Optimum 6.6 - 7.5 pH (32.7 ac) (30.8%)
Purple	Alkaline > 7.5 pH (16.1 ac) (15.2%)

—	Field Boundary
—	Lime Product Recommendation lb/ac
Red	500 - 1600 (0.8 ac) (0.8%)
Orange	1700 - 3500 (1.7 ac) (1.6%)
Yellow	3600 - 5200 (3.8 ac) (3.6%)
Green	5300 - 6600 (8.8 ac) (8.3%)
Blue	6700 - 7800 (9.2 ac) (8.7%)
Purple	7900 - 9200 (11.7 ac) (11.0%)
Dark Purple	9300 - 10500 (10.4 ac) (9.8%)
Dark Purple	10600 - 12800 (6.1 ac) (5.8%)

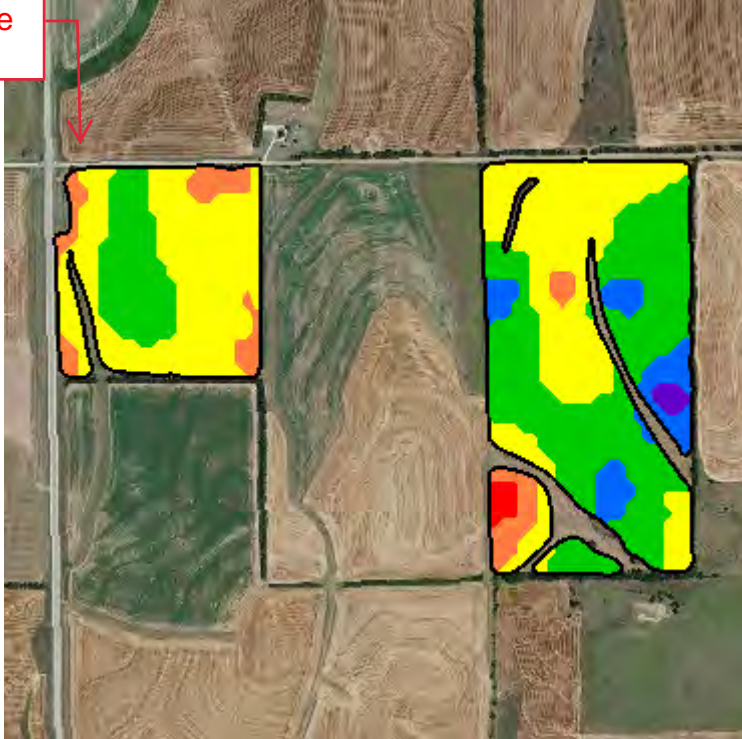
The 40 acre tract is not included in the auction.

Sulfur - ppm (2019)



The 40 acre tract is not included in the auction.

Sulfur Product Recommendation (2019)



Grower: Ritchie Tarn
Farm: Advantage Trust
Field: D Hoffman 28
Area: 106.30 ac

Event Date(s): 4/25/2019
Season: 2019
Min: 6.16 ppm
Avg: 8.84 ppm
Max: 11.77 ppm

Season: 2019
Min Rate: 5.00 lb/ac
Avg Rate: 7.43 lb/ac
Max Rate: 10.00 lb/ac
Total Product: 790.27 lb
Applied Area: 106.30 ac
Product: Sulfur

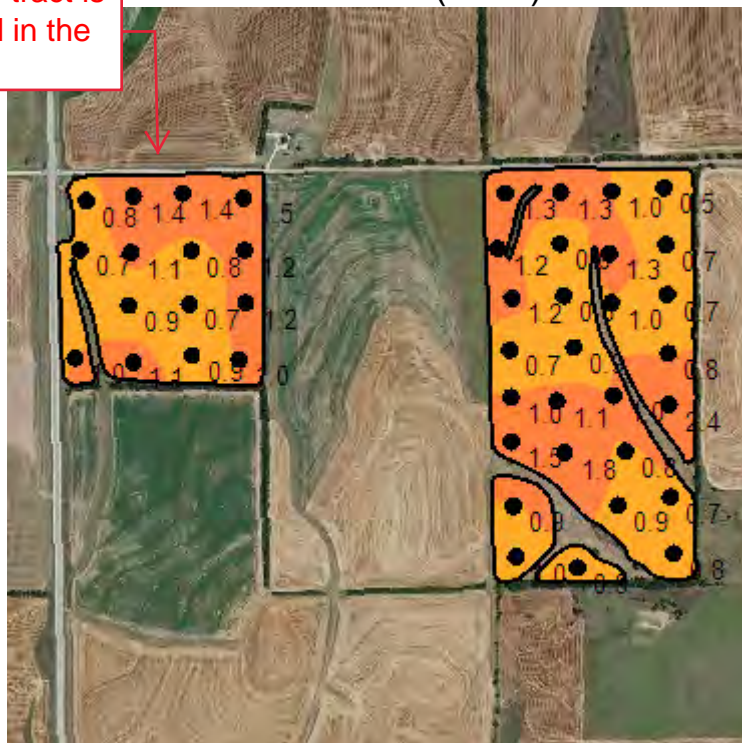
Order Id: 763329
Order Task Id: 21104327
Crop - Year 1: Soybeans
Crop Purpose - Year 1: Dry Grain
Yield Goal - Year 1: 40
Task: Midwest Labs - S Rec

—	Field Boundary
—	Sulfur Surface ppm
Yellow	Very Low 0 - 5 ppm (0.0 ac) (0.0%)
Orange	Low 5 - 10 ppm (99.5 ac) (93.6%)
Red	Medium 10 - 15 ppm (6.8 ac) (6.4%)
Pink	Optimum 15 - 20 ppm (0.0 ac) (0.0%)
Purple	High 20 - 25 ppm (0.0 ac) (0.0%)
Dark Purple	Very High > 25 ppm (0.0 ac) (0.0%)

—	Field Boundary
—	Sulfur Product Recommendation lb/ac
Red	5 (1.1 ac) (1.1%)
Orange	6 (8.2 ac) (7.7%)
Yellow	7 (48.6 ac) (45.7%)
Green	8 (41.0 ac) (38.5%)
Blue	9 (6.7 ac) (6.3%)
Purple	10 (0.7 ac) (0.7%)

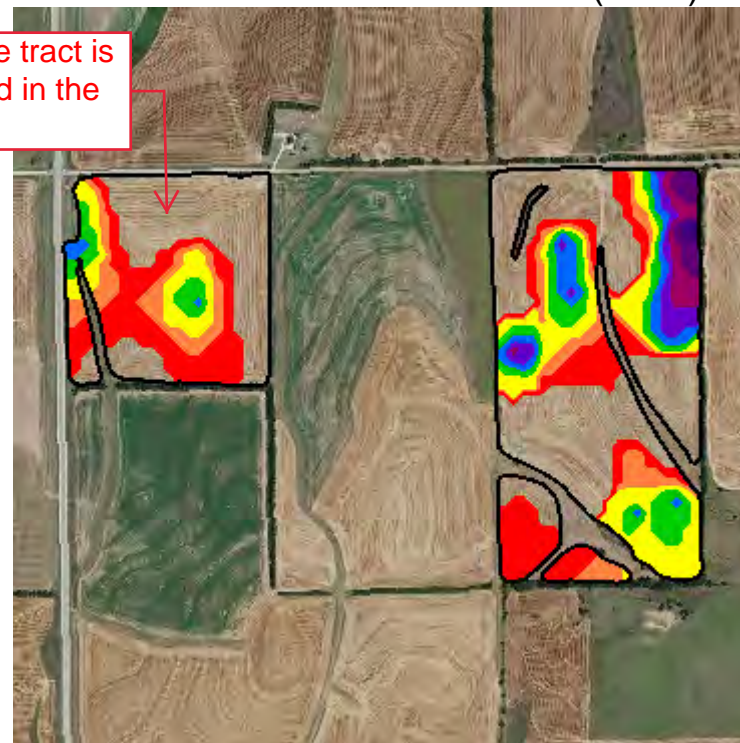
The 40 acre tract is not included in the auction.

Zinc Surface (2019)



Zinc Product Recommendation (2019)

The 40 acre tract is not included in the auction.



Grower: Ritchie Tarn
Farm: Advantage Trust
Field: D Hoffman 28
Area: 106.30 ac

Event Date(s): 4/25/2019
Season: 2019
Min: 0.50 ppm
Avg: 1.02 ppm
Max: 2.30 ppm

Season: 2019
Min Rate: 4.00 lb/ac
Avg Rate: 5.82 lb/ac
Max Rate: 12.00 lb/ac
Total Product: 342.44 lb
Applied Area: 58.85 ac
Product: Zinc Sulfate

Order Id: 763329
Order Task Id: 21104333
Crop - Year 1: SOYBEANS
Purpose - Year 1: Dry Grain
Yield Goal - Year 1: 40
Task: Main Recs - Zn Rec

—	Field Boundary
	Zinc Surface ppm
Yellow	Very Low 0 - 0.5 ppm (0.0 ac) (0.0%)
Orange	Low 0.5 - 1.0 ppm (58.8 ac) (55.4%)
Light Orange	Medium 1.0 - 2.5 ppm (47.5 ac) (44.6%)
Pink	Optimum 2.5 - 4.0 ppm (0.0 ac) (0.0%)
Purple	High 4.0 - 6.0 ppm (0.0 ac) (0.0%)
Dark Purple	Very High > 6.0 ppm (0.0 ac) (0.0%)

—	Field Boundary
	Zinc Product Recommendation lb/ac
Red	4 (20.0 ac) (18.8%)
Orange	5 (8.8 ac) (8.3%)
Yellow	6 (13.3 ac) (12.5%)
Green	7 (7.2 ac) (6.8%)
Blue	8 (3.7 ac) (3.5%)
Purple	9 (2.1 ac) (2.0%)
Dark Purple	10 (1.9 ac) (1.8%)
Dark Purple	11 - 12 (1.8 ac) (1.7%)

Product Summary

Season: 2019
Grower: Ritchie Tarn
Farm: Advantage Trust
Field: D Hoffman 28
Area: 106.30 ac

K2O

Recommendation	Rec Acres	Avg Rec Rate	App Acres	Avg App Rate	Total Product
0-0-60 763329 21104324 5/6/2019 8:28:18 AM(local) Soybeans Dry Grain 40	106.3	27.6 lb/ac	68.7	42.7 lb/ac	2,935.9 lb

Lime

Recommendation	Rec Acres	Avg Rec Rate	App Acres	Avg App Rate	Total Product
Lime, Ag 763329 21104321 5/6/2019 8:28:18 AM(local) Soybeans Dry Grain	106.3	3,907.8 lb/ac	52.7	7,880.9 lb/ac	415,407.5 lb

P2O5

Recommendation	Rec Acres	Avg Rec Rate	App Acres	Avg App Rate	Total Product
11-52-0 MAP 763329 21104330 5/6/2019 8:28:18 AM(local) SOYBEANS Dry Grain 40 No	106.3	45.6 lb/ac	87.6	55.4 lb/ac	4,852.3 lb

Sulfur

Recommendation	Rec Acres	Avg Rec Rate	App Acres	Avg App Rate	Total Product
Sulfur 763329 21104327 5/6/2019 8:28:18 AM(local) Soybeans Dry Grain 40	106.3	7.4 lb/ac	106.3	7.4 lb/ac	790.3 lb

Zinc

Recommendation	Rec Acres	Avg Rec Rate	App Acres	Avg App Rate	Total Product
Zinc Sulfate 763329 21104333 5/6/2019 8:28:18 AM(local) SOYBEANS Dry Grain 40	106.3	3.2 lb/ac	58.8	5.8 lb/ac	342.4 lb