



Advantage Trust

D Hoffman 11

Area: 135.41 ac

Farm Imagery

Grower: Ritchie Tarn
Farm: Advantage Trust
Field: D Hoffman 11
Number of Fields: 9
Area: 819.21 ac

— D Hoffman 11 (135.41 ac)
— Other Fields (683.80 ac)



The east 80 tract is
not included in the
auction.

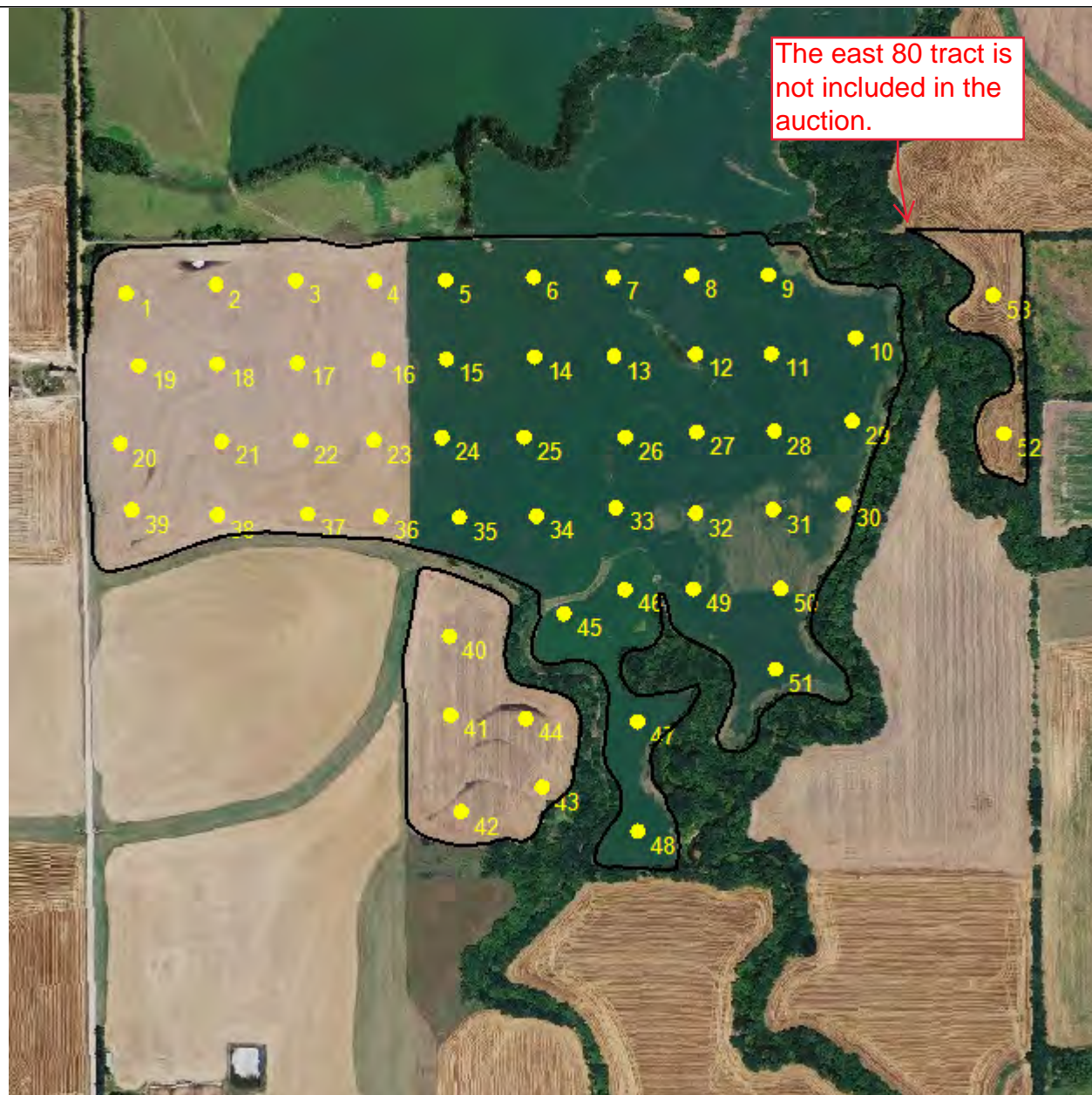


One in = 2.2 miles

0.0 1.0 2.1 3.1 4.1 5.2



Soil Test Point Sample ID



Grower: Ritchie Tarn
Farm: Advantage Trust
Field: D Hoffman 11
Area: 135.41 ac
Event Date(s): 5/15/2019

— Field Boundary
● Soil Test Points

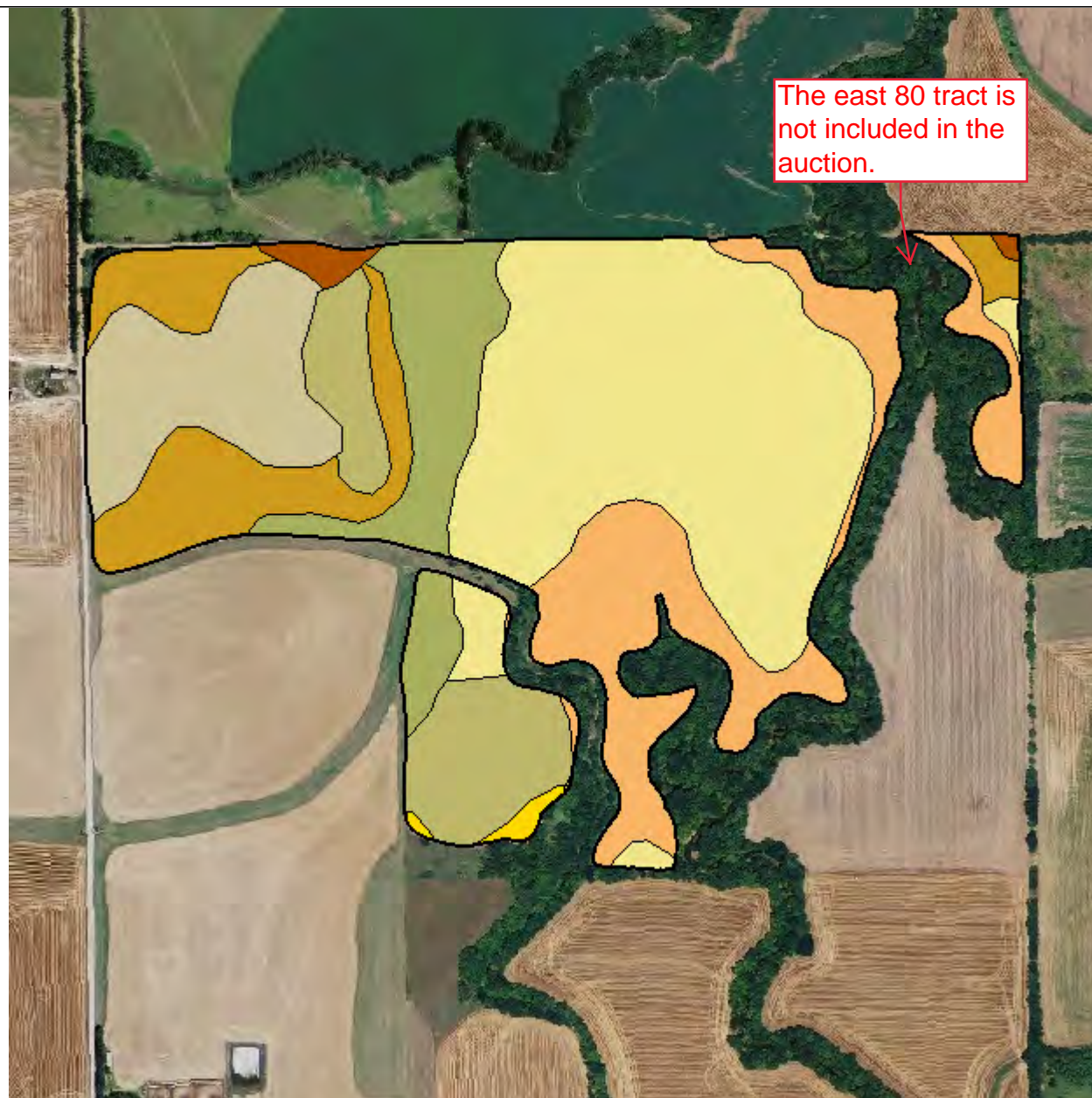


One in = 699 feet

0 328 656 984 1311 1639



Soil Type



Grower: Ritchie Tarn
 Farm: Advantage Trust
 Field: D Hoffman 11
 Area: 135.41 ac

- Field Boundary
- Soil Type
- Clime silty clay loam, 3 to 7 percent slopes (1.4 ac) (1.0%)
- Clime silty clay loam, 7 to 15 percent slopes (0.8 ac) (0.6%)
- Geary silt loam, 3 to 7 percent slopes (13.3 ac) (9.8%)
- Hobbs silt loam, occasionally flooded (23.1 ac) (17.1%)
- Irwin silty clay loam, 1 to 3 percent slopes (15.2 ac) (11.2%)
- Irwin silty clay loam, 3 to 7 percent slopes (16.1 ac) (11.9%)
- Muir silt loam, rarely flooded (51.5 ac) (38.0%)
- Sutphen silty clay loam, occasionally flooded (14.0 ac) (10.4%)



One in = 705 feet
 0 330 661 991 1321 1651



Soil Test Results

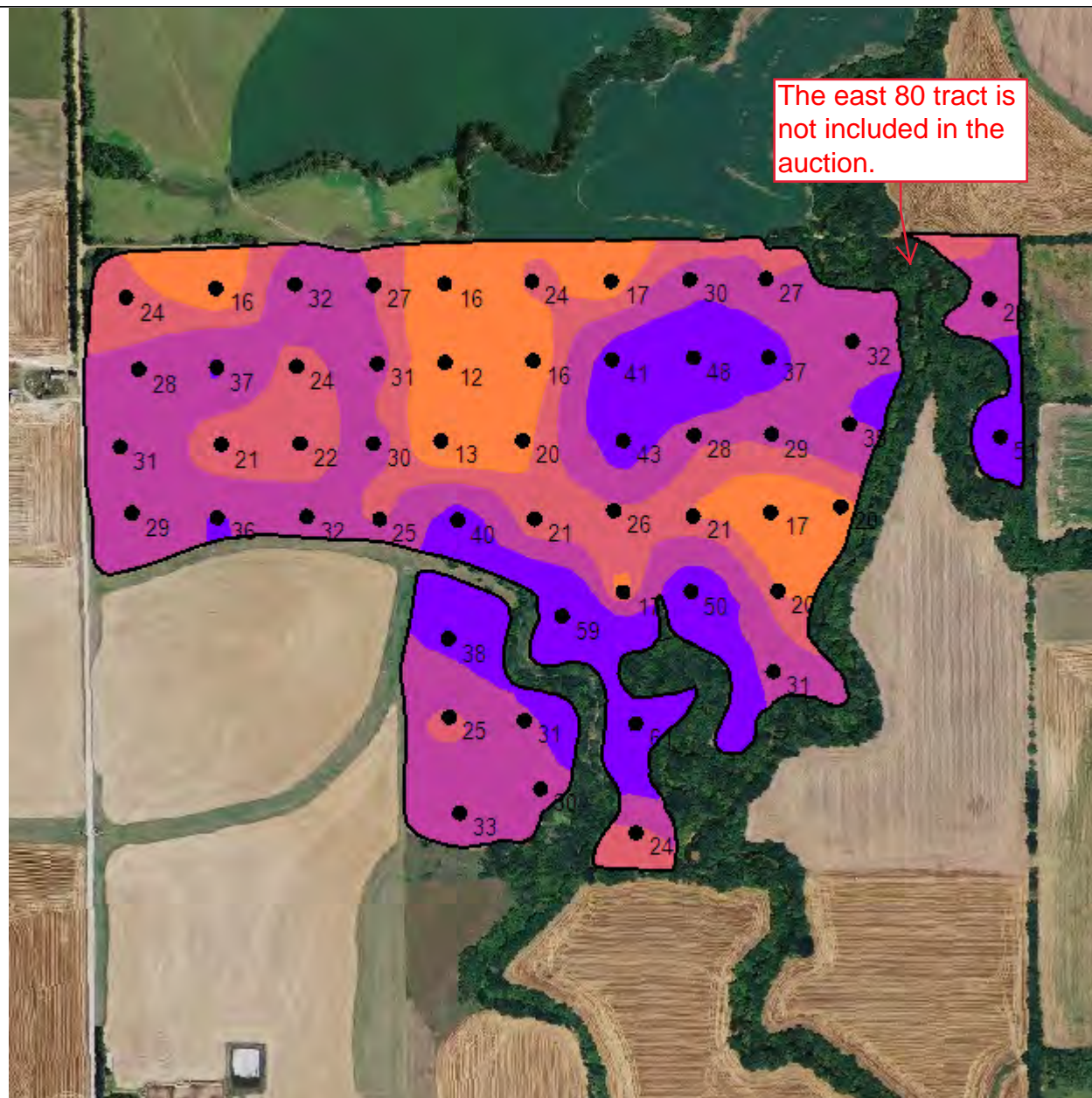
Grower: Ritchie Tarn
Farm: Advantage Trust
Field: D Hoffman 11
Area: 135.41 ac
Event Date(s): 5/15/2019

| | | | | | | | | | | | | | | | |
|------|-----|-----|-----|----|-----|----|-----|-------|-----|------|----|-----|------|-----|------|
| Min: | 5.1 | 6.1 | 2.1 | 12 | 16 | 12 | 107 | 1,648 | 117 | 14.7 | 5 | 0.4 | 39.2 | 1.6 | 5.2 |
| Max: | 7.8 | 7.1 | 3.8 | 61 | 135 | 27 | 311 | 4,506 | 813 | 26.6 | 38 | 1.5 | 92.9 | 4.6 | 27.7 |
| Avg: | 5.9 | 6.6 | 3.0 | 29 | 49 | 17 | 174 | 2,298 | 466 | 19.9 | 10 | 0.9 | 58.0 | 2.2 | 19.6 |

| Sample ID | pH | BpH | OM | P Bray 1 | P Bray 2 | P Olsen | K | Ca | Mg | CEC | S ppm | Zn | %Ca | %K | %Mg |
|-----------|-----|-----|-----|----------|----------|---------|-----|-------|-----|------|-------|-----|------|-----|------|
| 1 | 5.5 | 6.4 | 3.0 | 24 | 31 | | 205 | 2,239 | 685 | 23.5 | 13 | 0.7 | 47.6 | 2.2 | 24.3 |
| 2 | 7.8 | 7.1 | 2.8 | 16 | 61 | 16 | 176 | 4,506 | 190 | 24.6 | 7 | 1.5 | 91.8 | 1.8 | 6.4 |
| 3 | 5.4 | 6.3 | 2.9 | 32 | 38 | | 175 | 2,442 | 620 | 24.9 | 15 | 1.1 | 49.0 | 1.8 | 20.7 |
| 4 | 6.1 | 6.6 | 2.8 | 27 | 34 | | 197 | 2,762 | 813 | 24.5 | 9 | 0.9 | 56.4 | 2.1 | 27.7 |
| 5 | 5.4 | 6.4 | 3.3 | 16 | 22 | | 135 | 2,129 | 466 | 20.8 | 27 | 0.9 | 51.2 | 1.7 | 18.7 |
| 6 | 5.7 | 6.6 | 3.0 | 24 | 31 | | 159 | 2,175 | 449 | 19.0 | 9 | 0.6 | 57.2 | 2.1 | 19.7 |
| 7 | 5.5 | 6.5 | 3.3 | 17 | 25 | | 145 | 1,969 | 409 | 18.4 | 7 | 0.6 | 53.5 | 2.0 | 18.5 |
| 8 | 5.7 | 6.6 | 2.9 | 30 | 43 | | 156 | 1,896 | 425 | 17.0 | 7 | 0.8 | 55.8 | 2.4 | 20.8 |
| 9 | 5.5 | 6.6 | 2.9 | 27 | 44 | | 141 | 1,648 | 384 | 15.9 | 7 | 0.5 | 51.8 | 2.3 | 20.1 |
| 10 | 5.6 | 6.6 | 2.7 | 32 | 49 | | 127 | 1,670 | 405 | 15.8 | 6 | 0.8 | 52.8 | 2.1 | 21.4 |
| 11 | 5.6 | 6.6 | 3.0 | 37 | 60 | | 158 | 1,756 | 377 | 16.1 | 7 | 0.6 | 54.5 | 2.5 | 19.5 |
| 12 | 5.7 | 6.6 | 3.3 | 48 | 82 | | 199 | 2,085 | 456 | 18.6 | 7 | 0.8 | 56.0 | 2.7 | 20.4 |
| 13 | 5.7 | 6.6 | 3.3 | 41 | 62 | | 164 | 2,047 | 466 | 18.4 | 7 | 0.9 | 55.6 | 2.3 | 21.1 |
| 14 | 5.6 | 6.5 | 3.3 | 16 | 25 | | 151 | 2,157 | 473 | 19.7 | 8 | 0.5 | 54.7 | 2.0 | 20.0 |
| 15 | 5.2 | 6.2 | 3.4 | 12 | 16 | | 131 | 1,999 | 421 | 21.1 | 37 | 0.7 | 47.4 | 1.6 | 16.6 |
| 16 | 5.2 | 6.1 | 3.1 | 31 | 35 | | 178 | 1,857 | 579 | 22.3 | 13 | 0.9 | 41.6 | 2.0 | 21.6 |
| 17 | 5.4 | 6.3 | 3.0 | 24 | 30 | | 225 | 2,403 | 765 | 26.6 | 14 | 0.8 | 45.2 | 2.2 | 24.0 |
| 18 | 5.4 | 6.4 | 3.0 | 37 | 43 | | 226 | 2,276 | 628 | 24.1 | 11 | 0.8 | 47.2 | 2.4 | 21.7 |
| 19 | 5.5 | 6.4 | 3.0 | 28 | 37 | | 223 | 2,452 | 647 | 24.6 | 11 | 0.9 | 49.8 | 2.3 | 21.9 |
| 20 | 5.7 | 6.5 | 3.1 | 31 | 43 | | 218 | 2,529 | 714 | 24.3 | 11 | 1.0 | 52.0 | 2.3 | 24.5 |
| 21 | 7.0 | 7.1 | 2.5 | 21 | 41 | | 218 | 4,077 | 422 | 24.5 | 8 | 1.1 | 83.3 | 2.3 | 14.4 |
| 22 | 5.4 | 6.4 | 3.0 | 22 | 38 | | 200 | 2,358 | 567 | 23.8 | 13 | 0.8 | 49.5 | 2.2 | 19.9 |
| 23 | 5.4 | 6.4 | 3.2 | 30 | 39 | | 226 | 2,075 | 689 | 23.4 | 12 | 0.8 | 44.3 | 2.5 | 24.5 |

| | | | | | | | | | | | | | | | |
|----|-----|-----|-----|----|-----|----|-----|-------|-----|------|----|-----|------|-----|------|
| 24 | 6.0 | 6.6 | 3.8 | 13 | 22 | | 135 | 2,548 | 425 | 19.5 | 38 | 0.9 | 65.3 | 1.8 | 18.2 |
| 25 | 5.9 | 6.6 | 2.7 | 20 | 35 | | 154 | 2,211 | 455 | 18.3 | 9 | 0.6 | 60.4 | 2.2 | 20.7 |
| 26 | 5.8 | 6.6 | 2.7 | 43 | 69 | | 170 | 2,073 | 439 | 17.9 | 7 | 0.7 | 57.9 | 2.4 | 20.4 |
| 27 | 5.9 | 6.6 | 2.4 | 28 | 44 | | 150 | 1,979 | 432 | 16.7 | 6 | 0.8 | 59.3 | 2.3 | 21.6 |
| 28 | 5.9 | 6.7 | 2.8 | 29 | 52 | | 143 | 1,728 | 383 | 14.7 | 5 | 0.8 | 58.8 | 2.5 | 21.7 |
| 29 | 5.8 | 6.6 | 3.0 | 35 | 60 | | 129 | 1,672 | 386 | 14.7 | 6 | 1.2 | 56.9 | 2.3 | 21.9 |
| 30 | 5.8 | 6.6 | 3.1 | 20 | 37 | | 122 | 1,979 | 458 | 17.3 | 7 | 0.8 | 57.2 | 1.8 | 22.1 |
| 31 | 5.5 | 6.5 | 2.9 | 17 | 31 | | 107 | 1,696 | 383 | 16.1 | 7 | 0.7 | 52.7 | 1.7 | 19.8 |
| 32 | 5.7 | 6.6 | 2.8 | 21 | 36 | | 120 | 1,819 | 414 | 16.3 | 6 | 0.5 | 55.8 | 1.9 | 21.2 |
| 33 | 6.0 | 6.7 | 2.9 | 26 | 50 | | 160 | 2,246 | 454 | 18.1 | 8 | 0.4 | 62.0 | 2.3 | 20.9 |
| 34 | 5.7 | 6.6 | 3.0 | 21 | 33 | | 155 | 2,090 | 463 | 18.6 | 6 | 0.5 | 56.2 | 2.1 | 20.7 |
| 35 | 5.6 | 6.5 | 3.7 | 40 | 54 | | 152 | 2,107 | 437 | 19.1 | 9 | 1.1 | 55.2 | 2.0 | 19.1 |
| 36 | 6.6 | 6.8 | 3.3 | 25 | 50 | | 149 | 3,305 | 252 | 20.2 | 7 | 1.4 | 81.8 | 1.9 | 10.4 |
| 37 | 6.0 | 6.6 | 2.9 | 32 | 54 | | 169 | 2,730 | 310 | 19.6 | 8 | 1.1 | 69.6 | 2.2 | 13.2 |
| 38 | 5.1 | 6.2 | 2.8 | 36 | 46 | | 211 | 1,809 | 570 | 23.1 | 11 | 1.1 | 39.2 | 2.3 | 20.6 |
| 39 | 5.3 | 6.2 | 2.6 | 29 | 41 | | 210 | 2,228 | 661 | 24.9 | 12 | 0.9 | 44.7 | 2.2 | 22.1 |
| 40 | 7.8 | 7.1 | 2.9 | 38 | 135 | 27 | 294 | 4,126 | 147 | 22.6 | 5 | 1.1 | 91.3 | 3.3 | 5.4 |
| 41 | 5.5 | 6.5 | 2.9 | 25 | 30 | | 171 | 2,237 | 320 | 19.3 | 7 | 1.0 | 58.0 | 2.3 | 13.8 |
| 42 | 5.4 | 6.4 | 2.9 | 33 | 42 | | 207 | 2,250 | 480 | 22.1 | 8 | 0.9 | 50.9 | 2.4 | 18.1 |
| 43 | 6.4 | 6.7 | 3.1 | 30 | 43 | | 204 | 2,954 | 319 | 19.8 | 6 | 0.7 | 74.6 | 2.6 | 13.4 |
| 44 | 5.2 | 6.1 | 2.8 | 31 | 41 | | 199 | 1,827 | 466 | 20.6 | 13 | 0.8 | 44.3 | 2.5 | 18.9 |
| 45 | 6.1 | 6.6 | 3.8 | 59 | 100 | | 223 | 2,421 | 506 | 19.7 | 16 | 1.3 | 61.4 | 2.9 | 21.4 |
| 46 | 7.5 | 7.1 | 2.1 | 17 | 77 | 12 | 156 | 2,766 | 391 | 17.5 | 9 | 0.6 | 79.1 | 2.3 | 18.6 |
| 47 | 5.6 | 6.5 | 2.1 | 61 | 97 | | 167 | 1,870 | 482 | 18.0 | 7 | 0.7 | 51.9 | 2.4 | 22.3 |
| 48 | 5.7 | 6.6 | 2.8 | 24 | 37 | | 129 | 1,931 | 466 | 17.6 | 6 | 0.7 | 54.9 | 1.9 | 22.1 |
| 49 | 6.0 | 6.7 | 2.8 | 50 | 84 | | 167 | 2,110 | 509 | 17.9 | 6 | 1.2 | 58.9 | 2.4 | 23.7 |
| 50 | 5.9 | 6.6 | 2.9 | 20 | 36 | | 137 | 2,046 | 508 | 17.8 | 6 | 0.7 | 57.5 | 2.0 | 23.8 |
| 51 | 5.9 | 6.6 | 2.8 | 31 | 49 | | 127 | 1,975 | 508 | 17.4 | 6 | 1.2 | 56.8 | 1.9 | 24.3 |
| 52 | 6.2 | 6.7 | 3.0 | 51 | 85 | | 311 | 2,059 | 487 | 17.3 | 7 | 1.4 | 59.5 | 4.6 | 23.5 |
| 53 | 7.8 | 7.1 | 2.5 | 28 | 107 | 13 | 140 | 3,505 | 117 | 18.9 | 6 | 1.1 | 92.9 | 1.9 | 5.2 |

P Bray 1 Surface



Grower: Ritchie Tarn
Farm: Advantage Trust
Field: D Hoffman 11
Area: 135.41 ac
Event Date(s): 5/15/2019

Season: 2019
Min: 12.06 ppm
Avg: 29.44 ppm
Max: 59.31 ppm

- Field Boundary
- P Bray 1 Surface ppm
- Very Low 0 - 5 ppm (0.0 ac) (0.0%)
- Low 5 - 12 ppm (0.0 ac) (0.0%)
- Medium 12 - 22 ppm (22.0 ac) (16.2%)
- Optimum 22 - 27 ppm (28.9 ac) (21.3%)
- High 27 - 35 ppm (57.2 ac) (42.2%)
- Excess > 35 ppm (27.3 ac) (20.2%)



One in = 705 feet

0 330 661 991 1321 1651

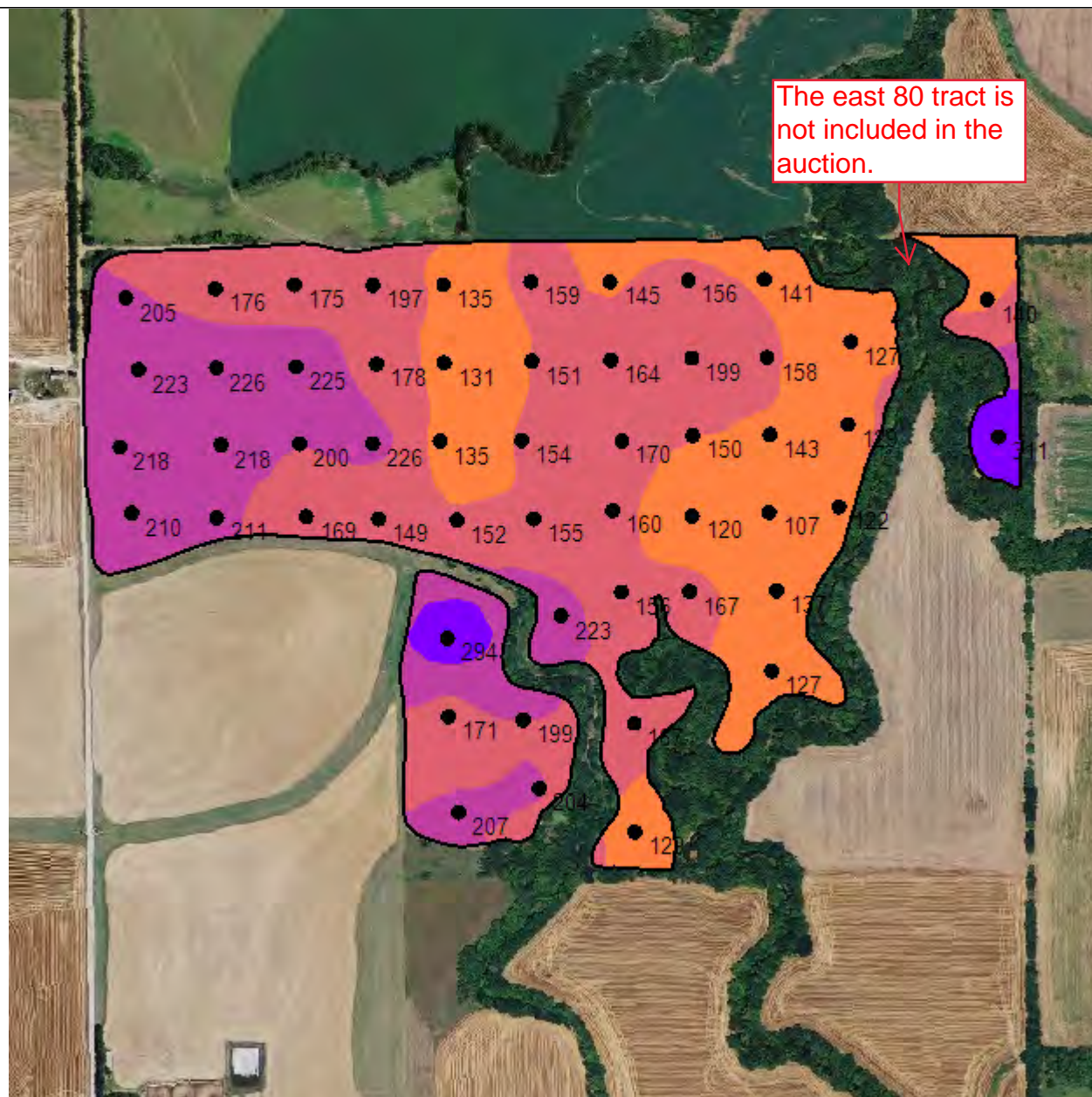


Potassium Surface

Grower: Ritchie Tarn
Farm: Advantage Trust
Field: D Hoffman 11
Area: 135.41 ac
Event Date(s): 5/15/2019

Season: 2019
Min: 108.30 ppm
Avg: 173.38 ppm
Max: 308.50 ppm

The east 80 tract is
not included in the
auction.



- Field Boundary
- Potassium Surface ppm
- Very Low 0 - 40 ppm (0.0 ac) (0.0%)
- Low 40 - 80 ppm (0.0 ac) (0.0%)
- Medium 80 - 150 ppm (42.2 ac) (31.1%)
- Optimum 150 - 200 ppm (58.6 ac) (43.3%)
- High 200 - 250 ppm (31.2 ac) (23.1%)
- Very High > 250 ppm (3.4 ac) (2.5%)

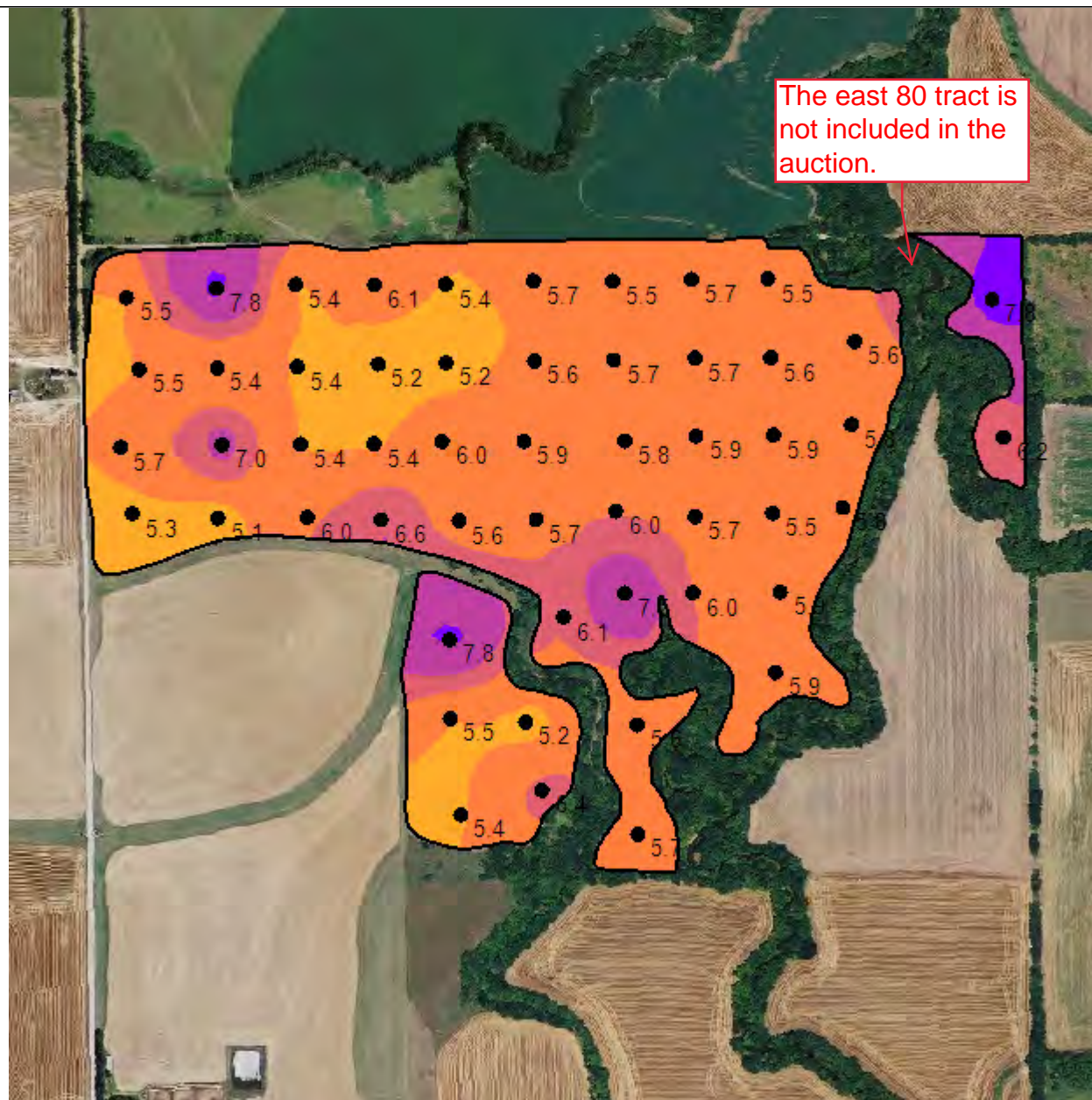


One in = 705 feet

0 330 661 991 1322 1652



pH Surface



The east 80 tract is not included in the auction.

Grower: Ritchie Tarn
Farm: Advantage Trust
Field: D Hoffman 11
Area: 135.41 ac
Event Date(s): 5/15/2019

Season: 2019
Min: 5.12
Avg: 5.87
Max: 7.76

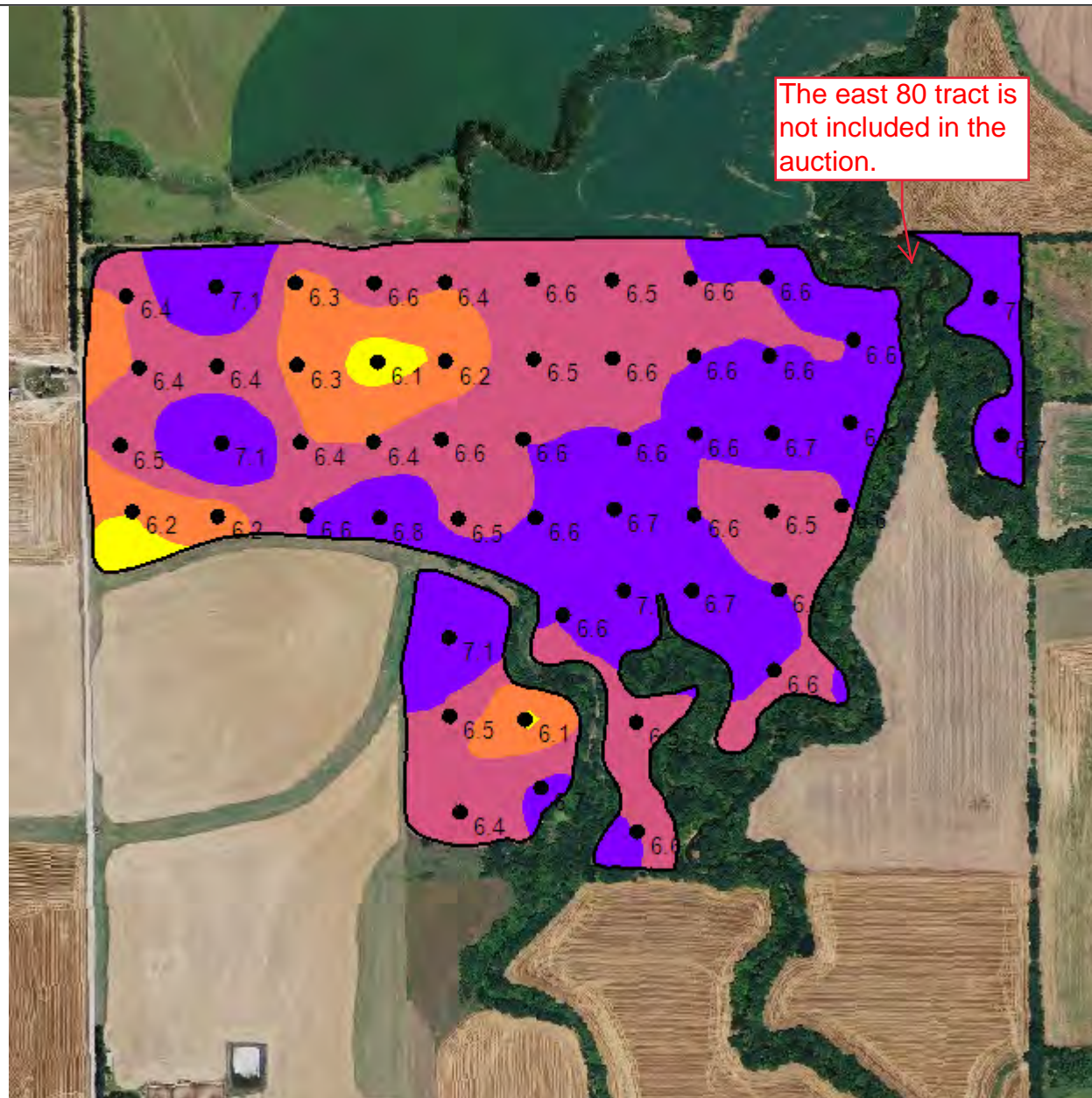
| | |
|--------------|---|
| — | Field Boundary |
| | pH Surface |
| Yellow | Excessive Acid 0 - 5 pH (0.0 ac) (0.0%) |
| Orange | Acidic 5.1 - 5.5 pH (19.1 ac) (14.1%) |
| Light Orange | Slightly Acidic 5.5 - 6.1 pH (90.0 ac) (66.5%) |
| Pink | Grain Optimum 6.1 - 6.6 pH (14.9 ac) (11.0%) |
| Purple | Alfalfa Optimum 6.6 - 7.5 pH (9.5 ac) (7.0%) |
| Blue | Alkaline > 7.5 pH (1.9 ac) (1.4%) |



One in = 704 feet
0 330 660 990 1320 1650



BpH Surface

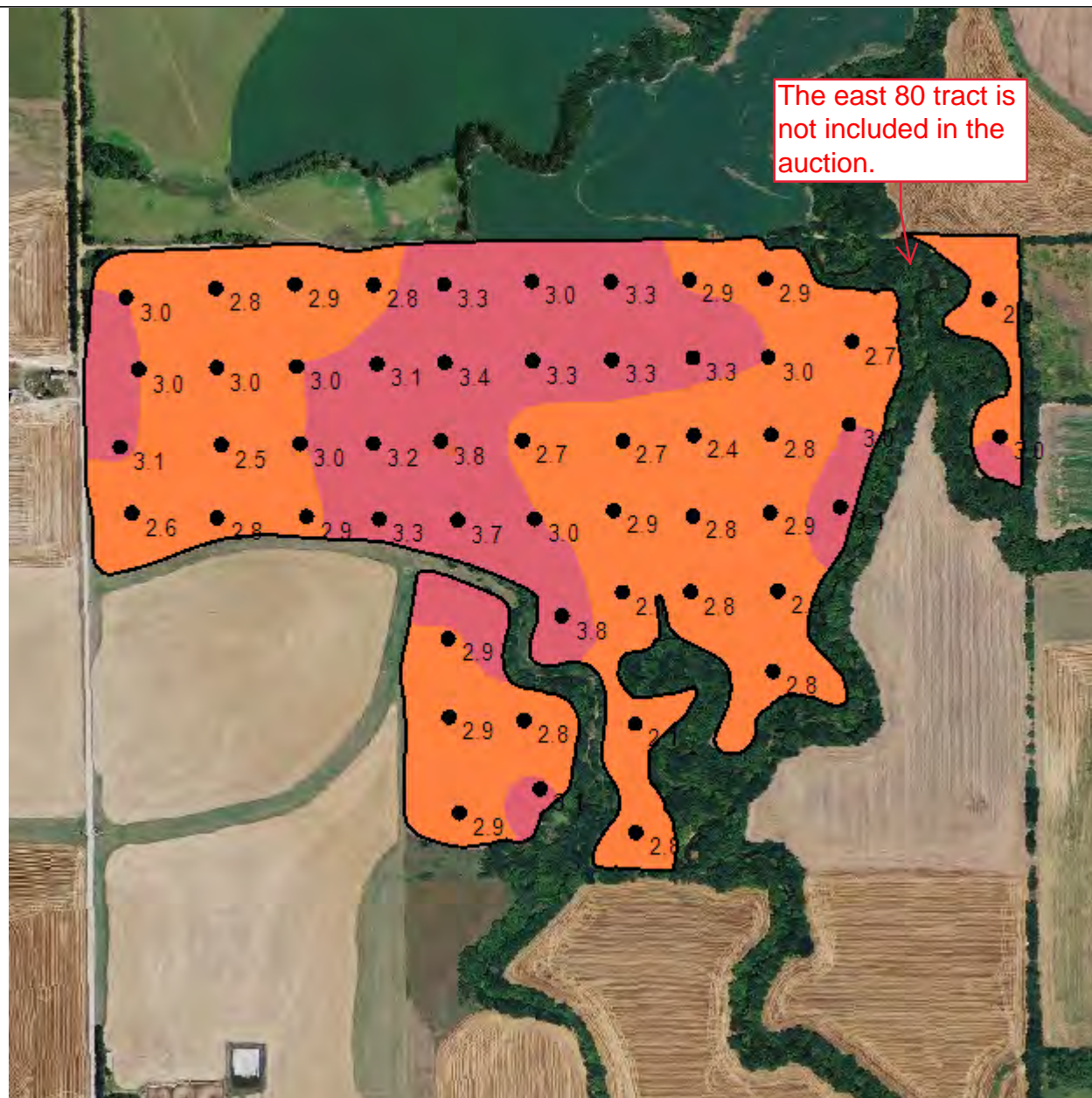


Grower: Ritchie Tarn
Farm: Advantage Trust
Field: D Hoffman 11
Area: 135.41 ac
Event Date(s): 5/15/2019

Season: 2019
Min: 6.11
Avg: 6.57
Max: 7.09

| | |
|---|------------------------------|
| — | Field Boundary |
| | BpH Surface |
| ■ | 0.0 - 6.2 (2.7 ac) (2.0%) |
| ■ | 6.2 - 6.4 (16.2 ac) (12.0%) |
| ■ | 6.4 - 6.6 (61.3 ac) (45.3%) |
| ■ | > 6.6 (55.1 ac) (40.7%) |

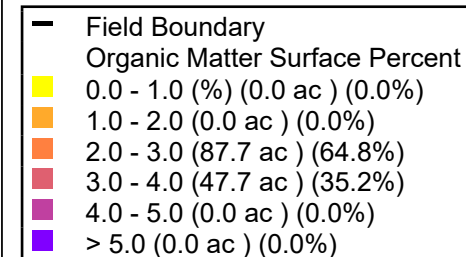
Organic Matter Surface



The east 80 tract is not included in the auction.

Grower: Ritchie Tarn
Farm: Advantage Trust
Field: D Hoffman 11
Area: 135.41 ac
Event Date(s): 5/15/2019

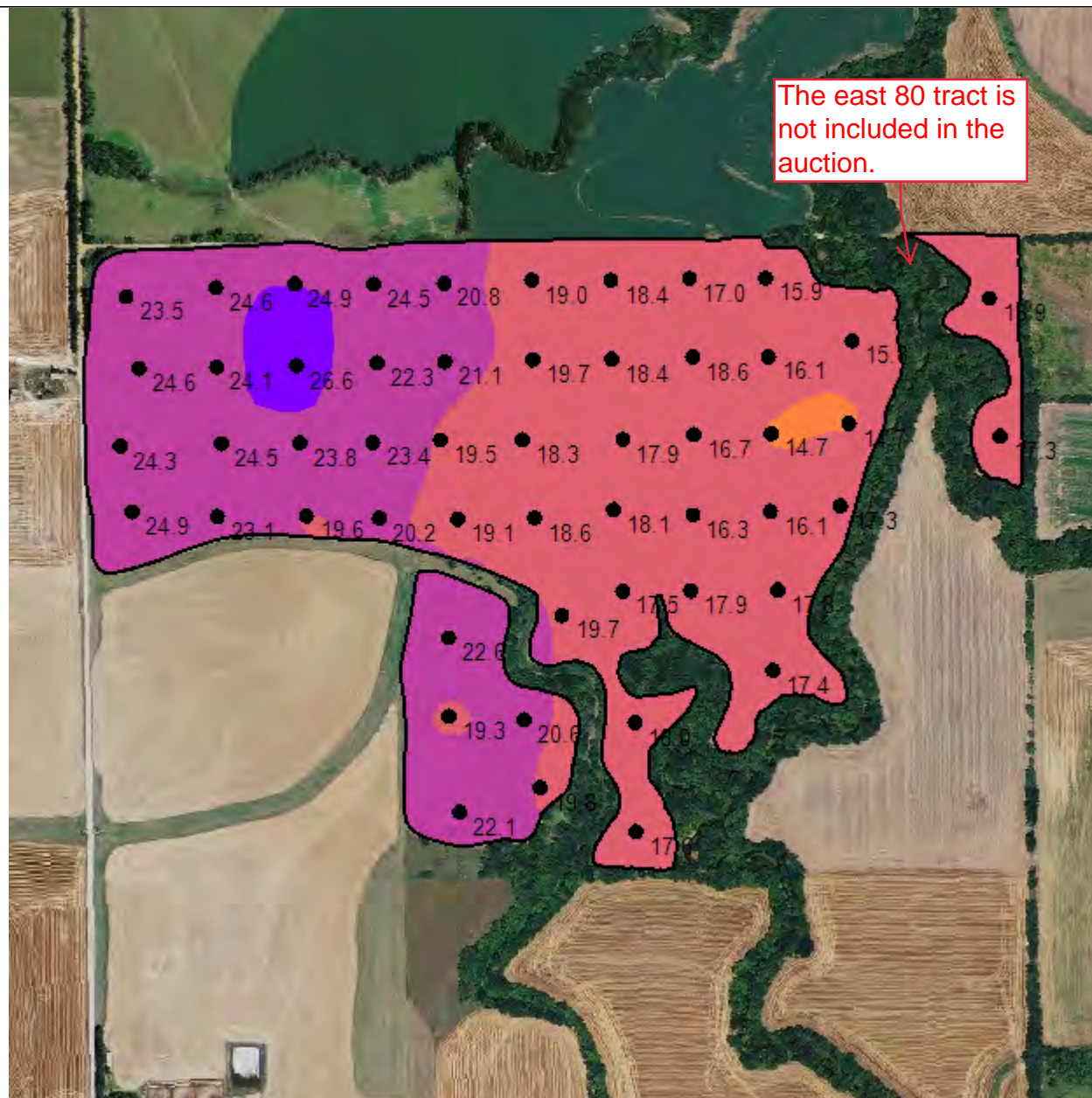
Season: 2019
Min: 2.15 Percent
Avg: 2.95 Percent
Max: 3.77 Percent



One in = 705 feet
0 330 661 991 1322 1652



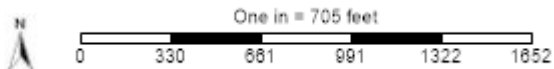
Cation Exchange Capacity Surface



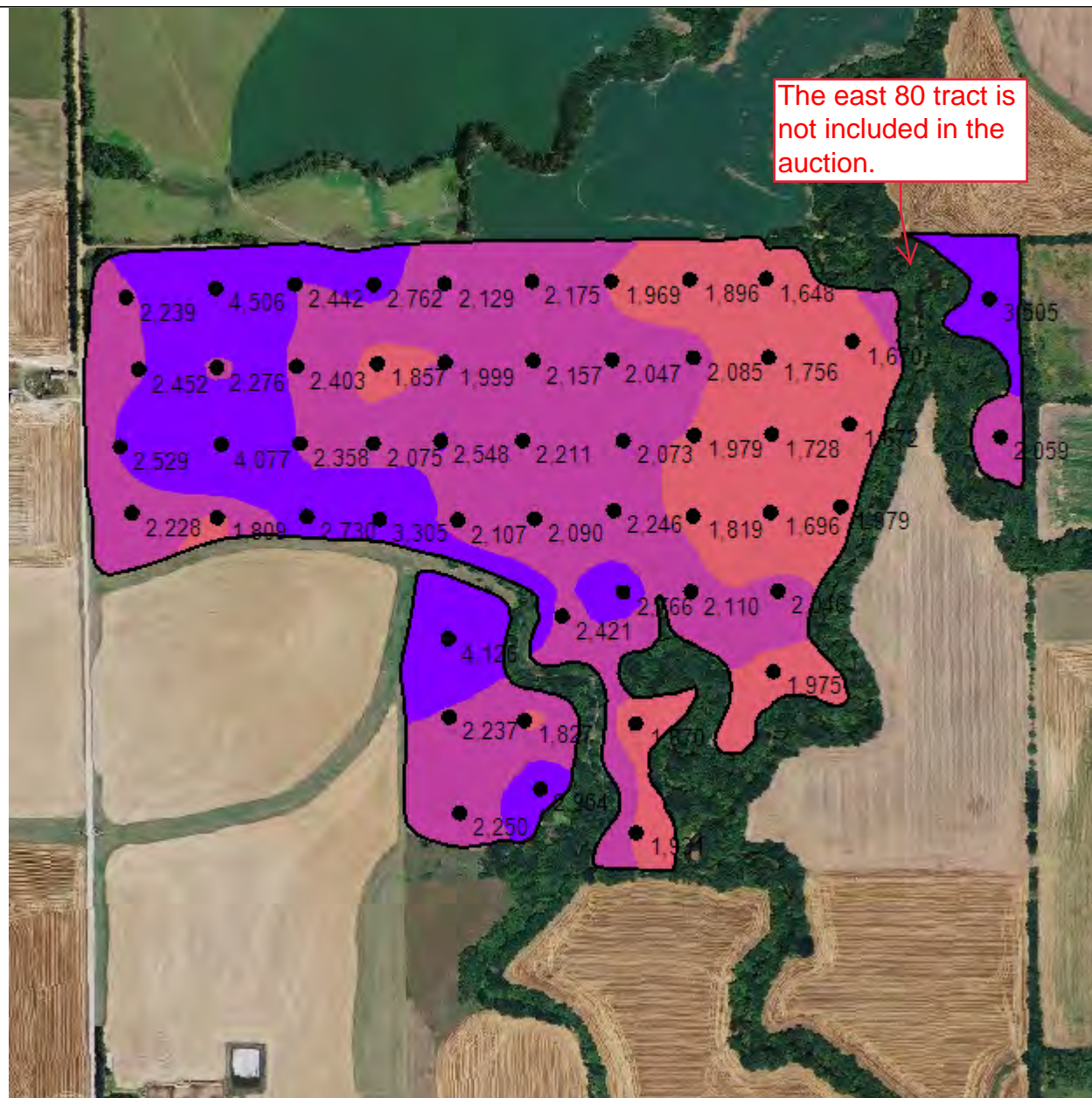
Grower: Ritchie Tarn
 Farm: Advantage Trust
 Field: D Hoffman 11
 Area: 135.41 ac
 Event Date(s): 5/15/2019

Season: 2019
 Min: 14.73 meq/100 g
 Avg: 19.90 meq/100 g
 Max: 26.31 meq/100 g

| | |
|---|--|
| — | Field Boundary |
| ■ | Cation Exchange Capacity Surface meq/100 g |
| ■ | Very Light 0 - 5 (0.0 ac) (0.0%) |
| ■ | Light 5 - 10 (0.0 ac) (0.0%) |
| ■ | Optimum 1 10 - 15 (1.3 ac) (1.0%) |
| ■ | Optimum 2 15 - 20 (77.2 ac) (57.0%) |
| ■ | Heavy 20 - 25 (52.9 ac) (39.1%) |
| ■ | Very Heavy > 25 (4.0 ac) (2.9%) |

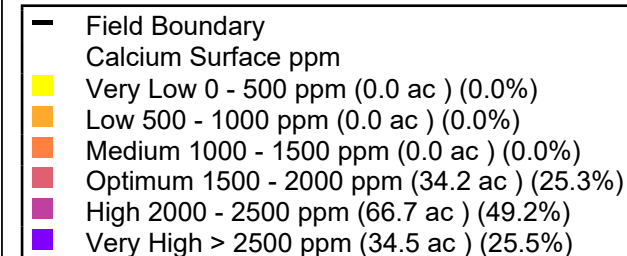


Calcium Surface



Grower: Ritchie Tarn
 Farm: Advantage Trust
 Field: D Hoffman 11
 Area: 135.41 ac
 Event Date(s): 5/15/2019

Season: 2019
 Min: 1,645.39 ppm
 Avg: 2,307.60 ppm
 Max: 4,470.41 ppm



One in = 705 feet
 0 330 661 991 1321 1651

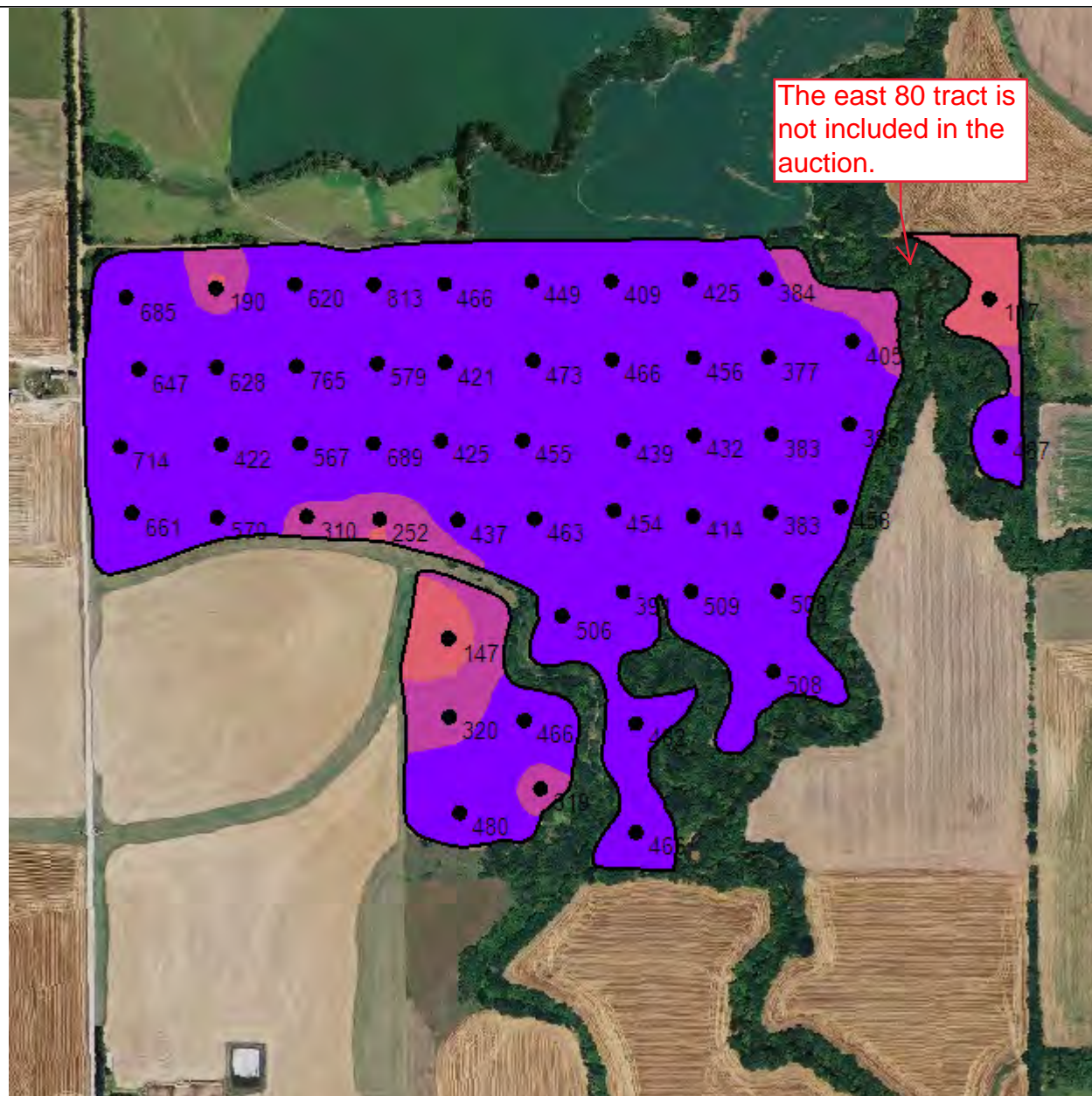


Magnesium Surface

Grower: Ritchie Tarn
Farm: Advantage Trust
Field: D Hoffman 11
Area: 135.41 ac
Event Date(s): 5/15/2019

Season: 2019
Min: 127.12 ppm
Avg: 463.70 ppm
Max: 789.44 ppm

The east 80 tract is
not included in the
auction.



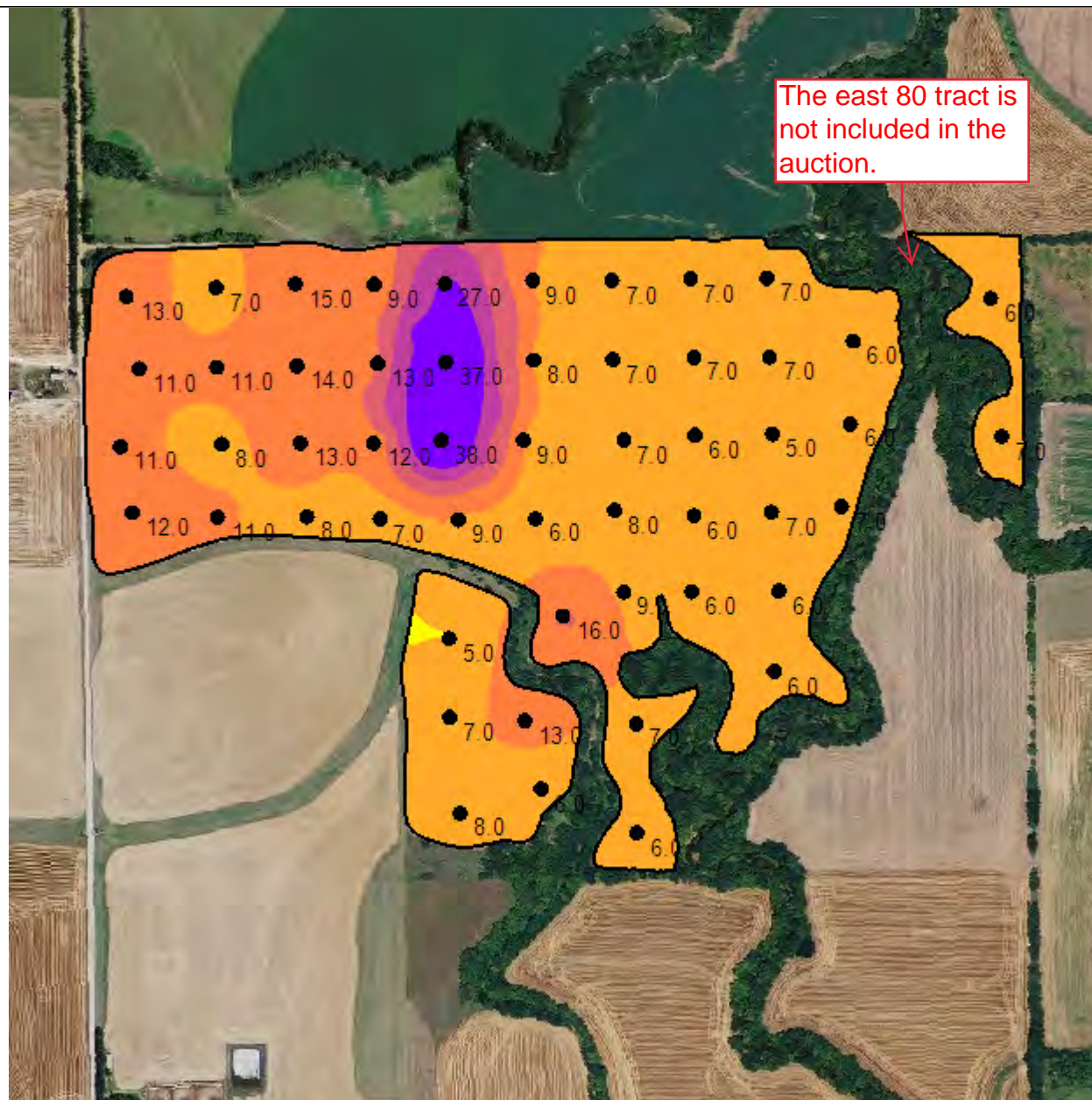
- Field Boundary
- Magnesium Surface ppm
- Very Low 0 - 37 ppm (0.0 ac) (0.0%)
- Low 37 - 75 ppm (0.0 ac) (0.0%)
- Medium 75 - 120 ppm (0.0 ac) (0.0%)
- Optimum 120 - 250 ppm (5.6 ac) (4.2%)
- High 250 - 375 ppm (11.4 ac) (8.4%)
- Excess > 375 ppm (118.3 ac) (87.4%)



One in = 705 feet
0 330 661 991 1321 1651



Sulfur - ppm

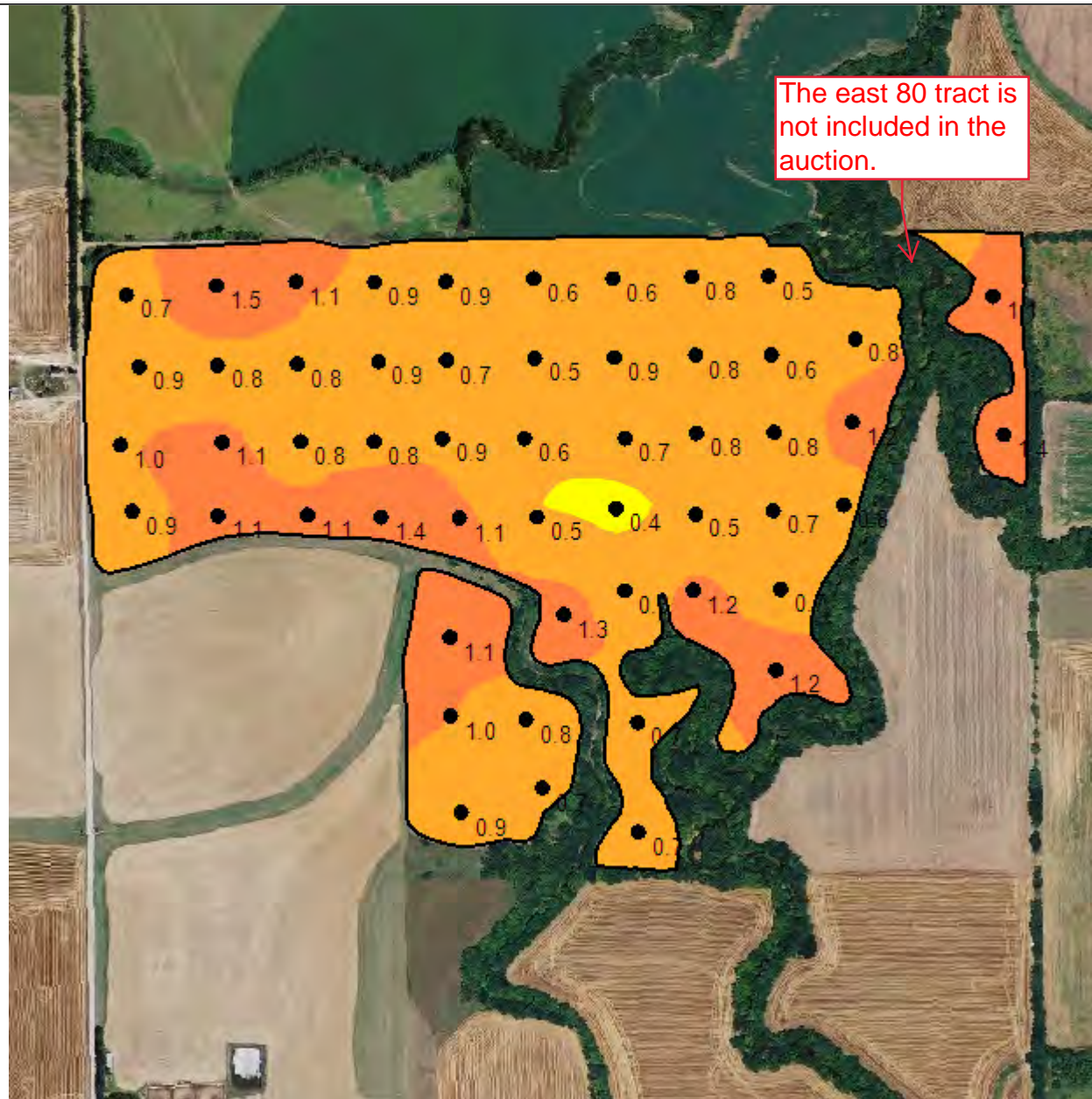


Grower: Ritchie Tarn
Farm: Advantage Trust
Field: D Hoffman 11
Area: 135.41 ac
Event Date(s): 5/15/2019

Season: 2019
Min: 4.88 ppm
Avg: 9.82 ppm
Max: 37.39 ppm

| | |
|--------------|---------------------------------------|
| — | Field Boundary |
| | Sulfur Surface ppm |
| Yellow | Very Low 0 - 5 ppm (0.3 ac) (0.2%) |
| Orange | Low 5 - 10 ppm (86.8 ac) (64.1%) |
| Light Orange | Medium 10 - 15 ppm (35.2 ac) (26.0%) |
| Pink | Optimum 15 - 20 ppm (4.7 ac) (3.5%) |
| Purple | High 20 - 25 ppm (3.8 ac) (2.8%) |
| Dark Purple | Very High > 25 ppm (4.5 ac) (3.4%) |

Zinc Surface



Grower: Ritchie Tarn
Farm: Advantage Trust
Field: D Hoffman 11
Area: 135.41 ac
Event Date(s): 5/15/2019

Season: 2019
Min: 0.41 ppm
Avg: 0.87 ppm
Max: 1.49 ppm

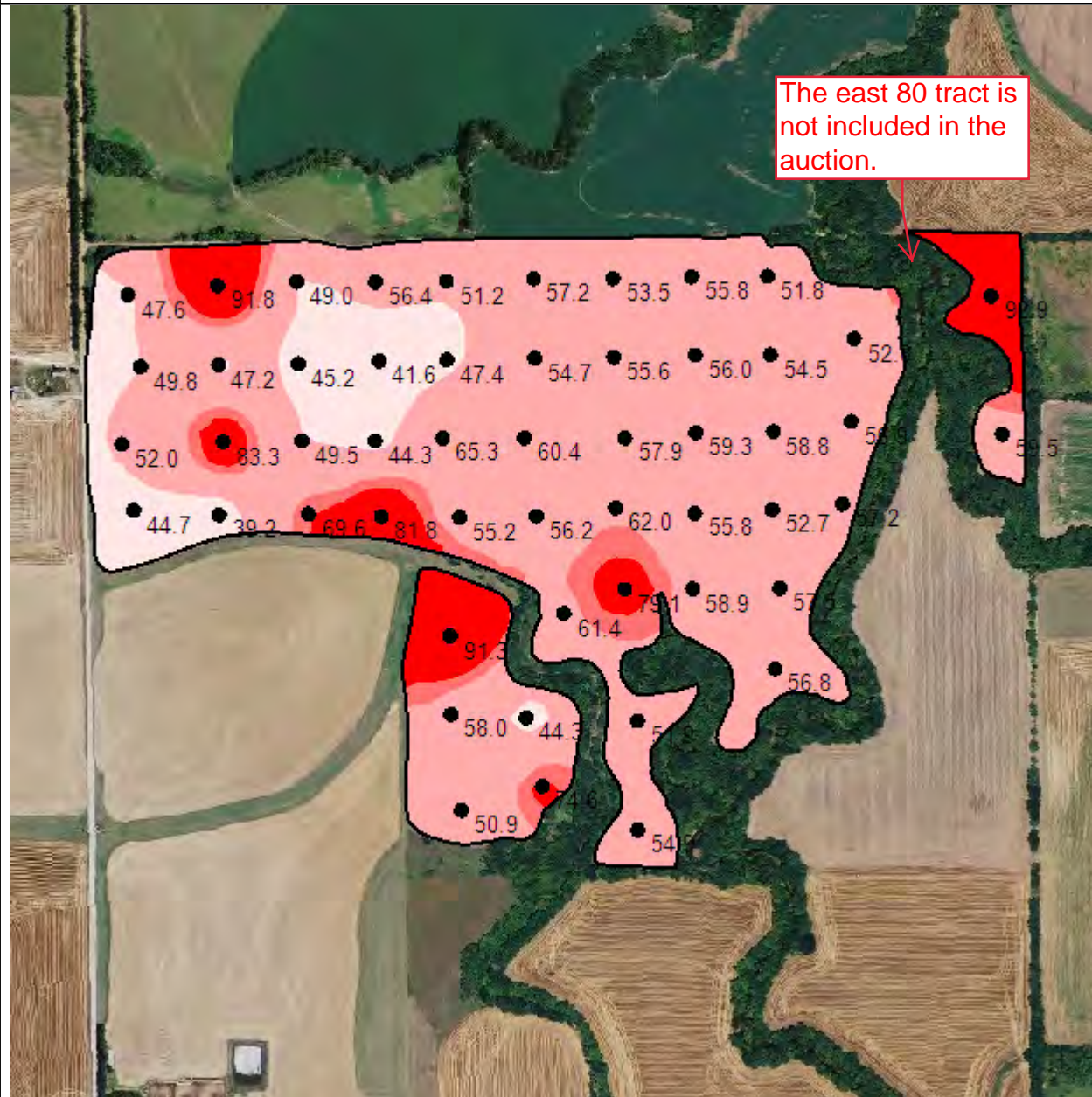
| | |
|-------------|---|
| — | Field Boundary |
| | Zinc Surface ppm |
| Yellow | Very Low 0 - 0.5 ppm (1.7 ac) (1.2%) |
| Orange | Low 0.5 - 1.0 ppm (99.1 ac) (73.2%) |
| Red | Medium 1.0 - 2.5 ppm (34.7 ac) (25.6%) |
| Pink | Optimum 2.5 - 4.0 ppm (0.0 ac) (0.0%) |
| Purple | High 4.0 - 6.0 ppm (0.0 ac) (0.0%) |
| Dark Purple | Very High > 6.0 ppm (0.0 ac) (0.0%) |



One in = 703 feet
0 330 659 989 1318 1648

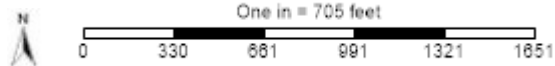
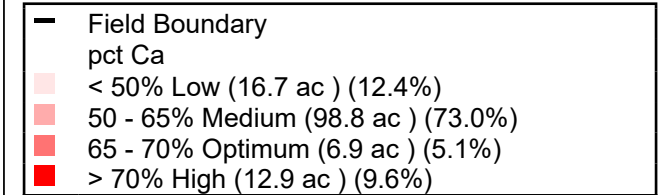


pct Ca

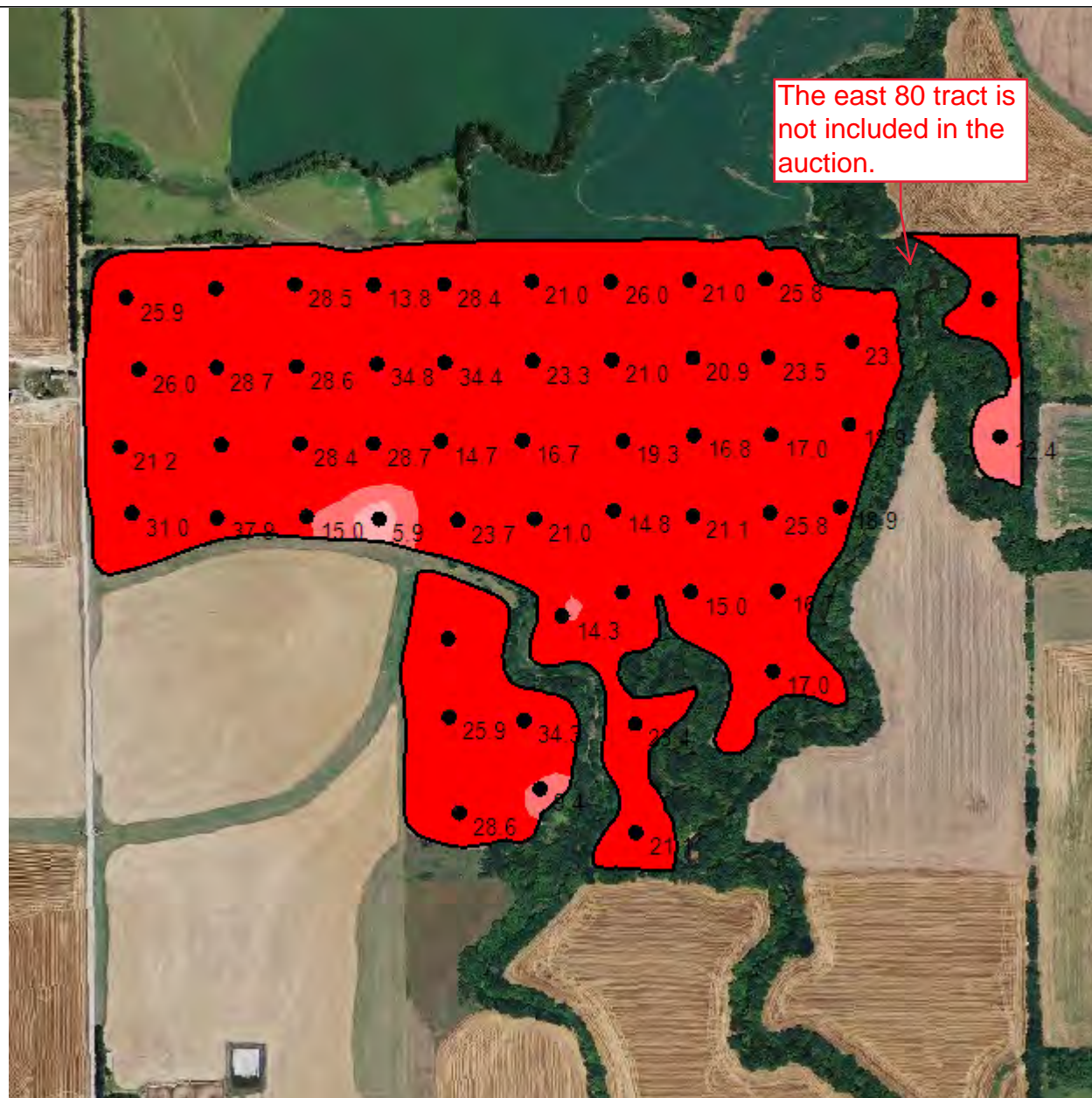


Grower: Ritchie Tarn
 Farm: Advantage Trust
 Field: D Hoffman 11
 Area: 135.41 ac
 Event Date(s): 5/15/2019

Season: 2019
 Min: 39.86
 Avg: 58.13
 Max: 91.95



pct H



Grower: Ritchie Tarn
 Farm: Advantage Trust
 Field: D Hoffman 11
 Area: 135.41 ac
 Event Date(s): 5/15/2019

Season: 2019
 Min: 7.35
 Avg: 22.48
 Max: 37.28

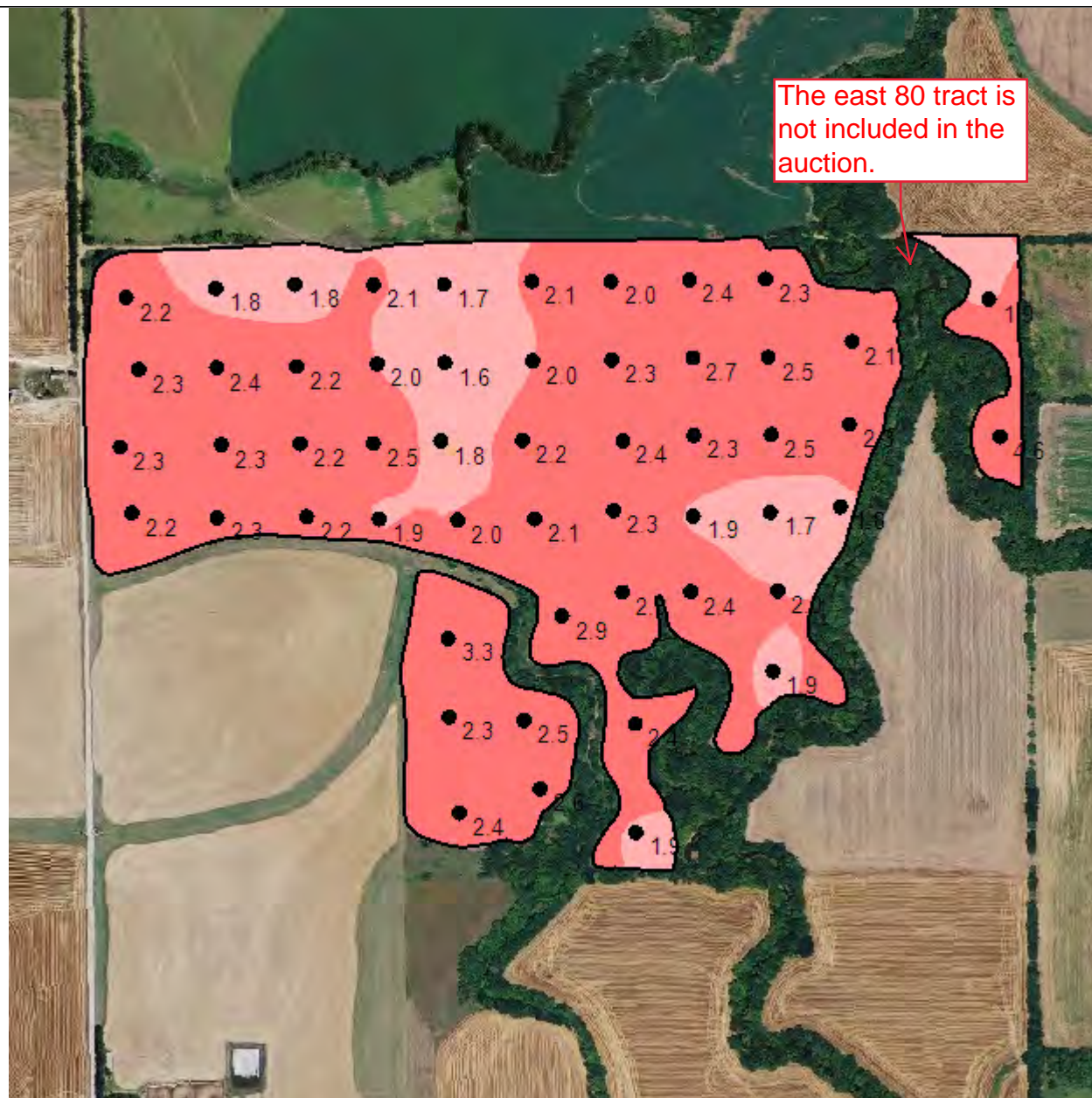
- Field Boundary
- pct H
- < 5% Low (0.0 ac) (0.0%)
- 5 - 10% Medium (0.7 ac) (0.5%)
- 10 - 15% Optimum (4.1 ac) (3.0%)
- > 15% High (130.7 ac) (96.5%)



One in = 705 feet
 0 330 661 991 1322 1652

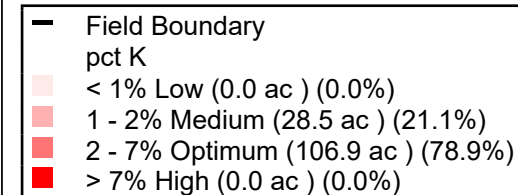


pct K



Grower: Ritchie Tarn
 Farm: Advantage Trust
 Field: D Hoffman 11
 Area: 135.41 ac
 Event Date(s): 5/15/2019

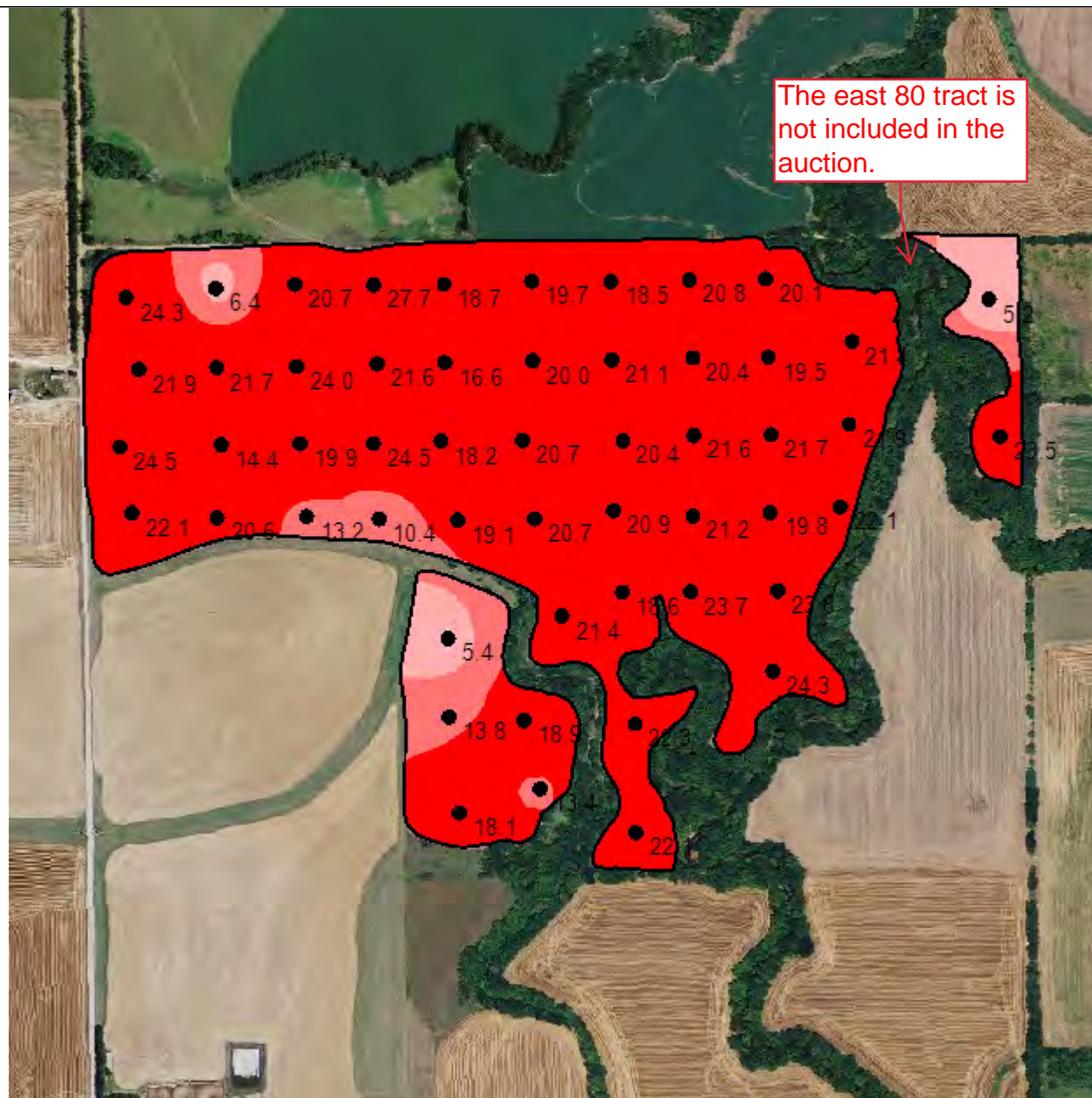
Season: 2019
 Min: 1.62
 Avg: 2.24
 Max: 4.56



One in = 705 feet
 0 330 661 991 1322 1652

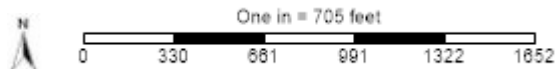
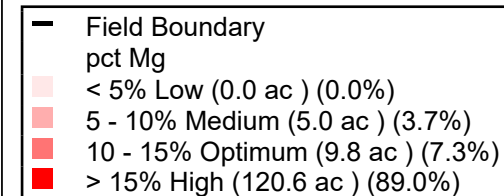


pct Mg

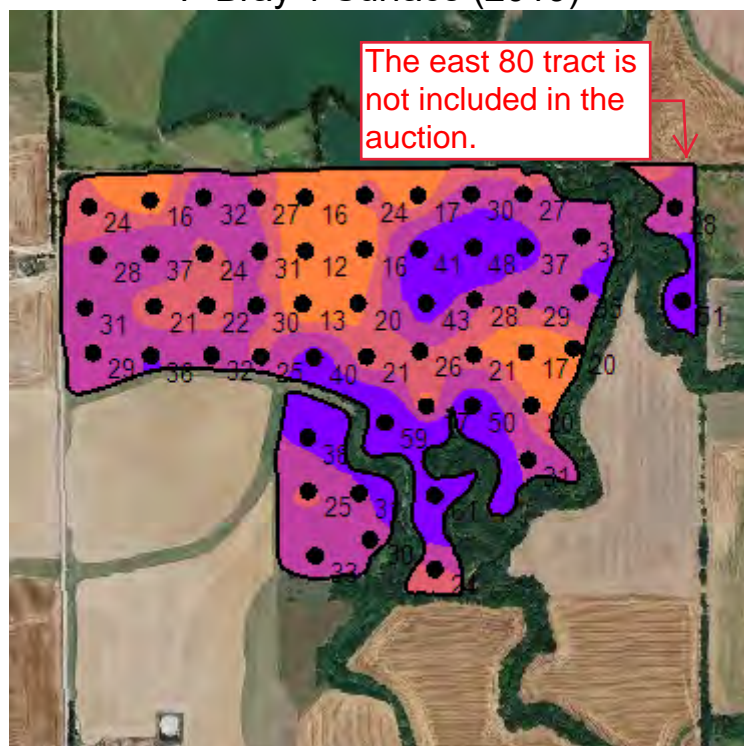


Grower: Ritchie Tarn
Farm: Advantage Trust
Field: D Hoffman 11
Area: 135.41 ac
Event Date(s): 5/15/2019

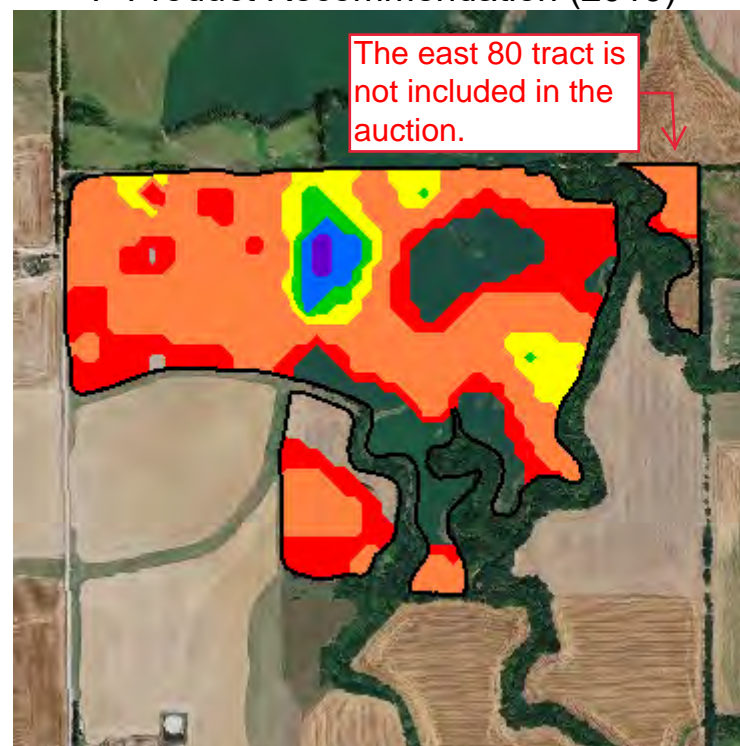
Season: 2019
Min: 5.68
Avg: 19.49
Max: 26.96



P Bray 1 Surface (2019)



P Product Recommendation (2019)



Grower: Ritchie Tarn
Farm: Advantage Trust
Field: D Hoffman 11
Area: 135.41 ac

Event Date(s): 5/15/2019
Season: 2019
Min: 12.06 ppm
Avg: 29.44 ppm
Max: 59.31 ppm

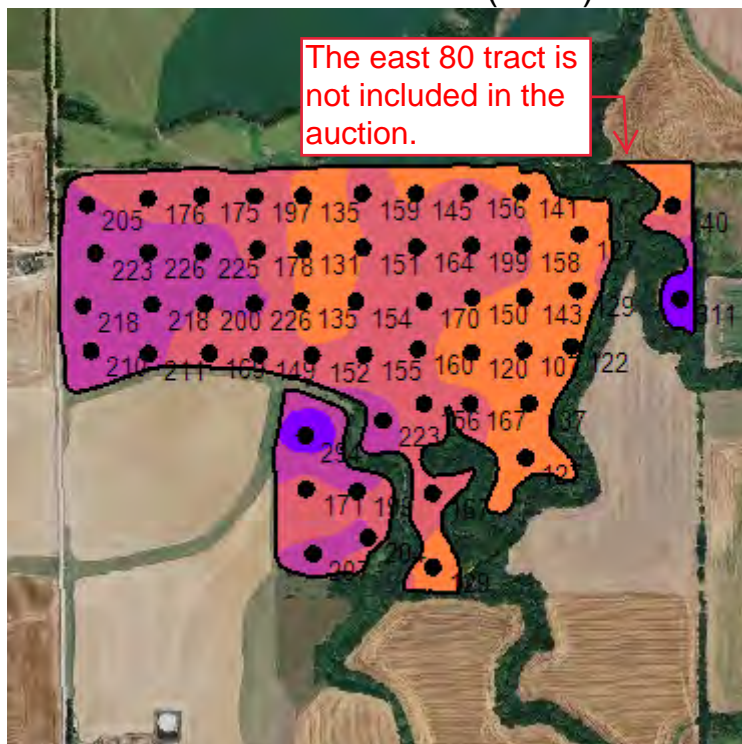
Season: 2019
Min Rate: 40.00 lb/ac
Avg Rate: 49.57 lb/ac
Max Rate: 90.00 lb/ac
Total Product: 5,357.65 lb
Applied Area: 108.09 ac
Product: 11-52-0 MAP

Order Id: 766064
Order Task Id: 21191488
Crop - Year 1: SOYBEANS
Purpose - Year 1: Dry Grain
Yield Goal - Year 1: 40
ICP?: No
Task: Main Recs - P Rec

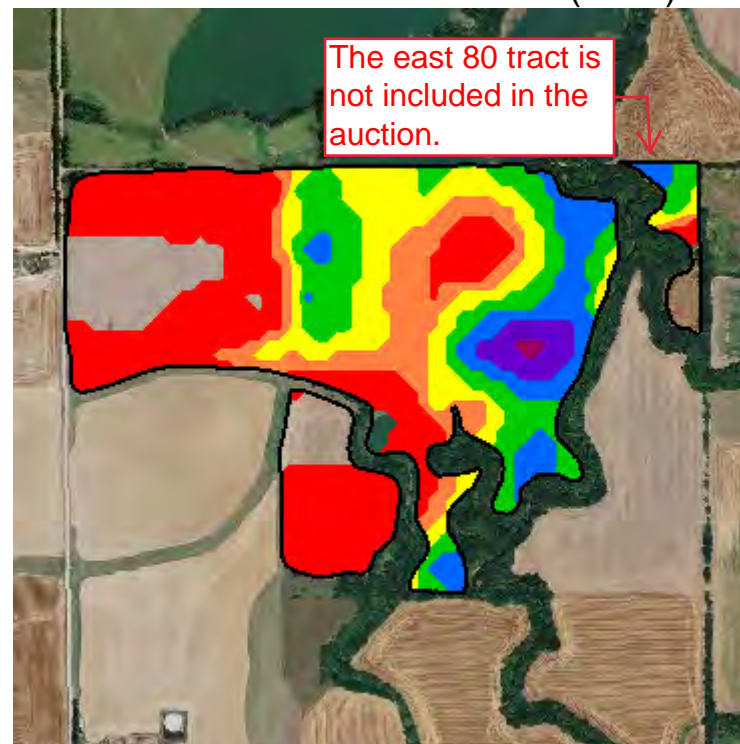
| | |
|--------------|--|
| — | Field Boundary |
| | P Bray 1 Surface ppm |
| Yellow | Very Low 0 - 5 ppm (0.0 ac) (0.0%) |
| Orange | Low 5 - 12 ppm (0.0 ac) (0.0%) |
| Light Orange | Medium 12 - 22 ppm (22.0 ac) (16.2%) |
| Red | Optimum 22 - 27 ppm (28.9 ac) (21.3%) |
| Purple | High 27 - 35 ppm (57.2 ac) (42.2%) |
| Dark Purple | Excess > 35 ppm (27.3 ac) (20.2%) |

| | |
|--------|--------------------------------|
| — | Field Boundary |
| | P Product Recommendation lb/ac |
| Red | 40 (30.8 ac) (22.7%) |
| Orange | 50 (61.2 ac) (45.2%) |
| Yellow | 60 (9.9 ac) (7.3%) |
| Green | 70 (3.1 ac) (2.3%) |
| Blue | 80 (2.5 ac) (1.8%) |
| Purple | 90 (0.7 ac) (0.5%) |

Potassium Surface (2019)



K Product Recommendation (2019)



Grower: Ritchie Tarn
Farm: Advantage Trust
Field: D Hoffman 11
Area: 135.41 ac

Event Date(s): 5/15/2019
Season: 2019
Min: 108.30 ppm
Avg: 173.38 ppm
Max: 308.50 ppm

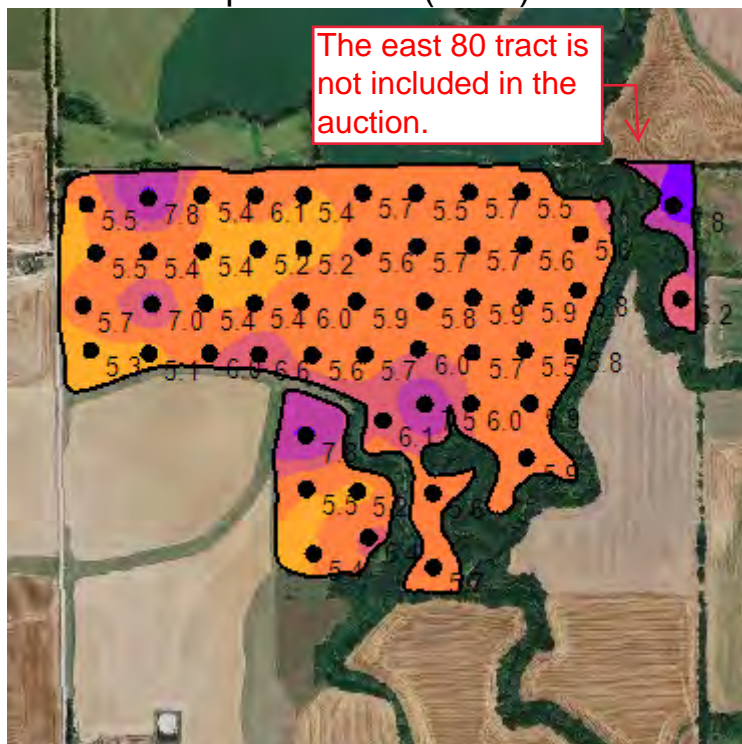
Season: 2019
Min Rate: 40.00 lb/ac
Avg Rate: 55.66 lb/ac
Max Rate: 100.00 lb/ac
Total Product: 6,561.73 lb
Applied Area: 117.89 ac
Product: 0-0-60

Order Id: 766064
Order Task Id: 21191470
Crop - Year 1: Soybeans
Crop Purpose - Year 1: Dry Grain
Yield Goal - Year 1: 40
Task: Midwest Labs - K Rec

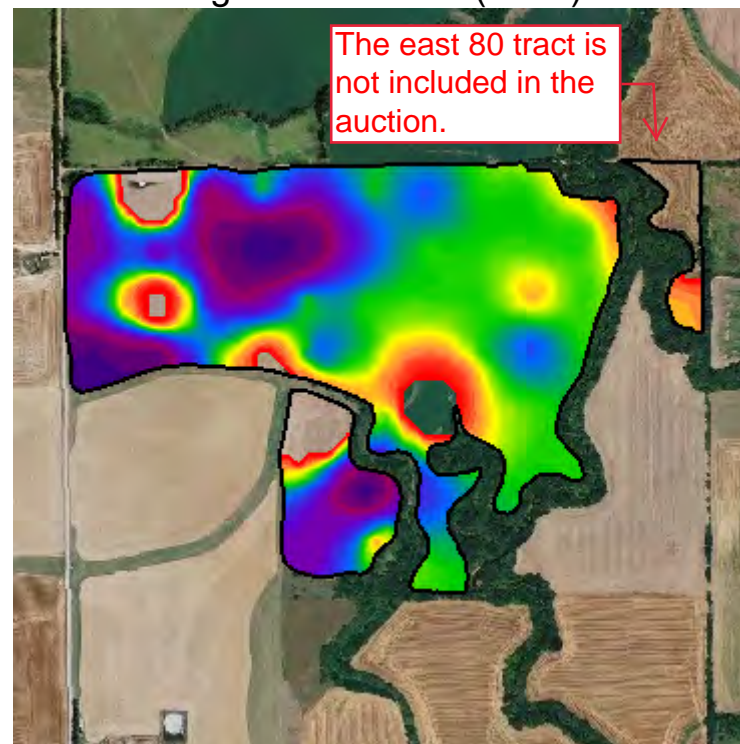
| | |
|---|--|
| — | Field Boundary |
| | Potassium Surface ppm |
| ■ | Very Low 0 - 40 ppm (0.0 ac) (0.0%) |
| ■ | Low 40 - 80 ppm (0.0 ac) (0.0%) |
| ■ | Medium 80 - 150 ppm (42.2 ac) (31.1%) |
| ■ | Optimum 150 - 200 ppm (58.6 ac) (43.3%) |
| ■ | High 200 - 250 ppm (31.2 ac) (23.1%) |
| ■ | Very High > 250 ppm (3.4 ac) (2.5%) |

| | |
|---|--------------------------------|
| — | Field Boundary |
| | K Product Recommendation lb/ac |
| ■ | 40 (45.6 ac) (33.7%) |
| ■ | 50 (15.8 ac) (11.7%) |
| ■ | 60 (20.6 ac) (15.2%) |
| ■ | 70 (20.0 ac) (14.8%) |
| ■ | 80 (12.1 ac) (8.9%) |
| ■ | 90 (3.5 ac) (2.6%) |
| ■ | 100 (0.3 ac) (0.2%) |

pH Surface (2019)



Ag Lime 50 ECC (2019)

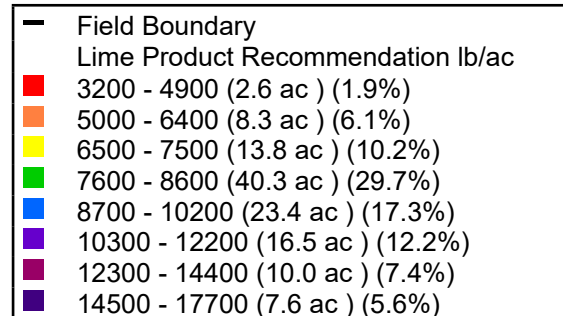
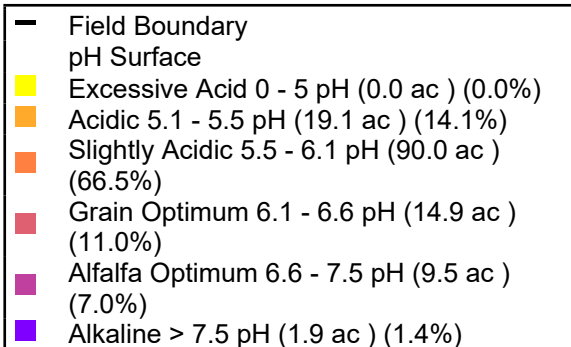


Grower: Ritchie Tarn
Farm: Advantage Trust
Field: D Hoffman 11
Area: 135.41 ac

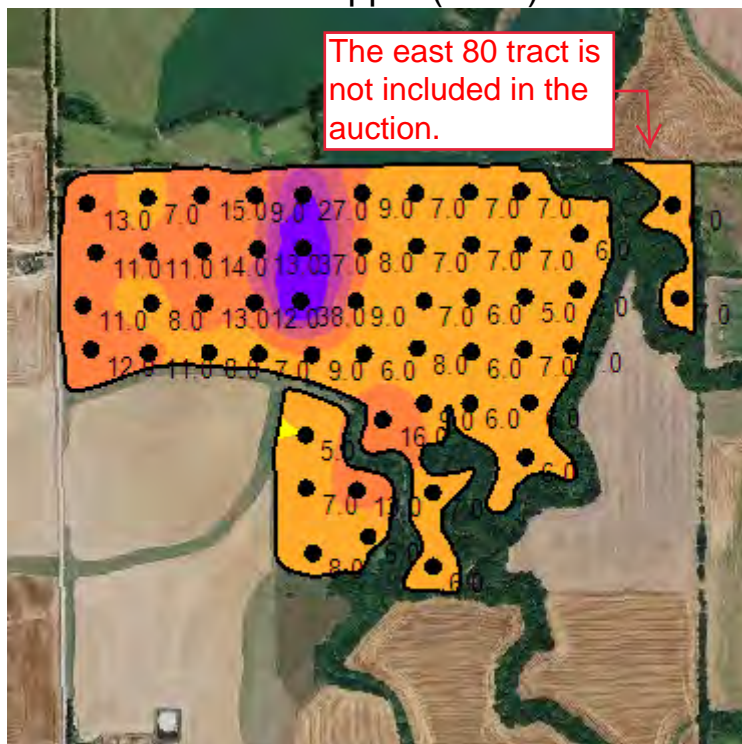
Event Date(s): 5/15/2019
Season: 2019
Min: 5.12
Avg: 5.87
Max: 7.76

Season: 2019
Min Rate: 3,200.00 lb/ac
Avg Rate: 9,279.56 lb/ac
Max Rate: 17,700.00 lb/ac
Total Product: 1,136,905.69 lb
Applied Area: 122.52 ac
Product: Lime, Ag

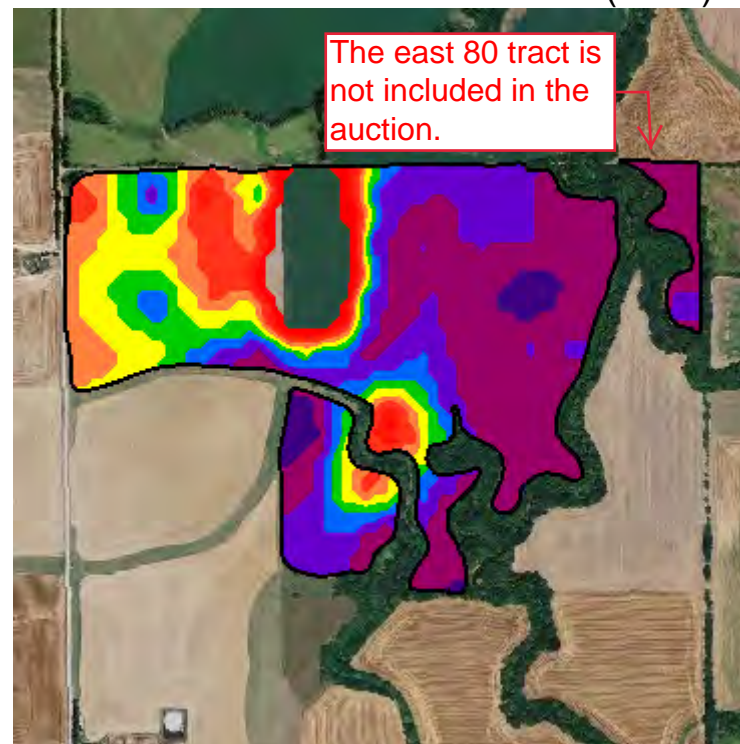
Order Id: 766064
Order Task Id: 21191461
Crop - Year 1: Soybeans
Crop Purpose - Year 1: Dry Grain
Task: Midwest Labs - Lime Rec



Sulfur - ppm (2019)



Sulfur Product Recommendation (2019)

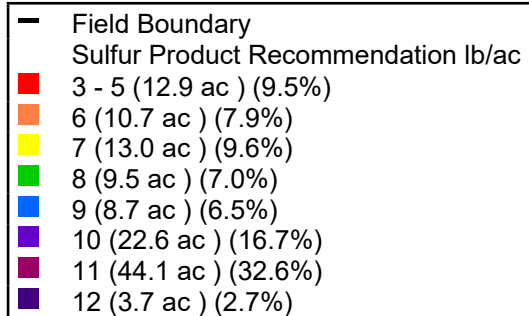
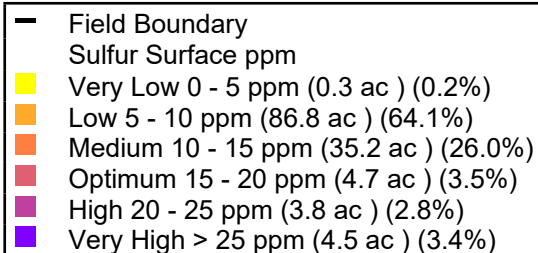


Grower: Ritchie Tarn
Farm: Advantage Trust
Field: D Hoffman 11
Area: 135.41 ac

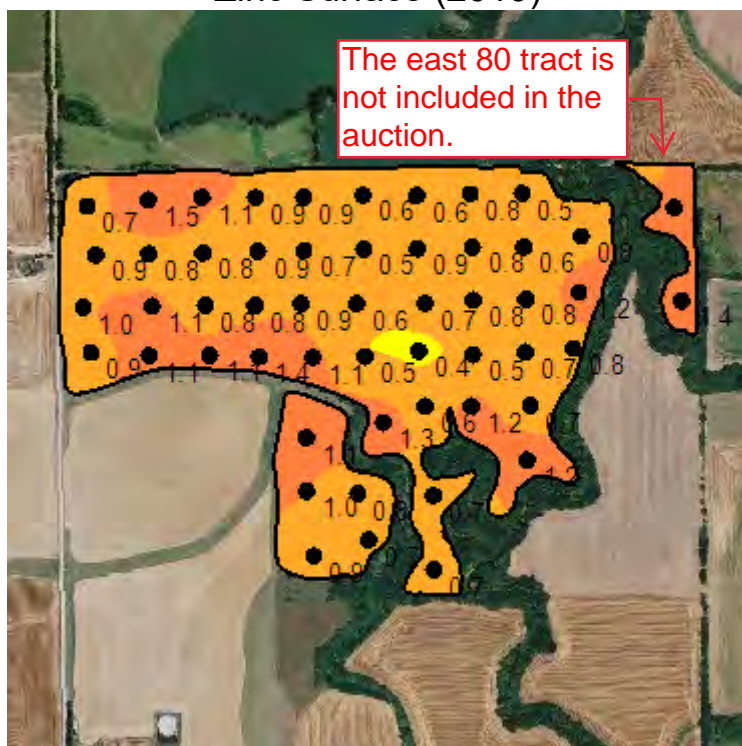
Event Date(s): 5/15/2019
Season: 2019
Min: 4.88 ppm
Avg: 9.82 ppm
Max: 37.39 ppm

Season: 2019
Min Rate: 3.00 lb/ac
Avg Rate: 8.95 lb/ac
Max Rate: 12.00 lb/ac
Total Product: 1,122.32 lb
Applied Area: 125.37 ac
Product: Sulfur

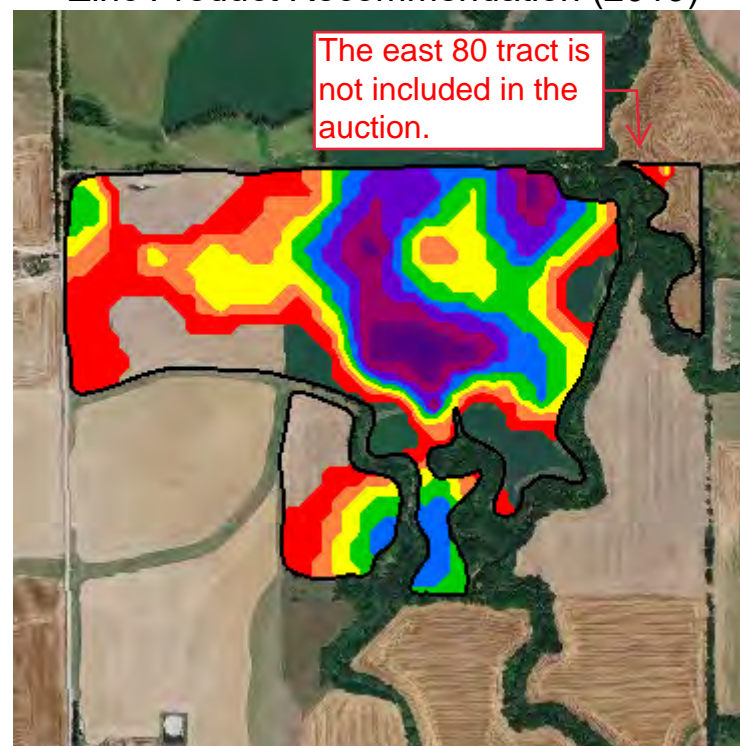
Order Id: 766064
Order Task Id: 21191479
Crop - Year 1: Soybeans
Crop Purpose - Year 1: Dry Grain
Yield Goal - Year 1: 40
Task: Midwest Labs - S Rec



Zinc Surface (2019)



Zinc Product Recommendation (2019)

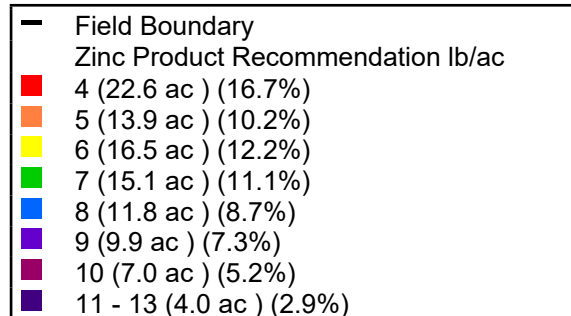
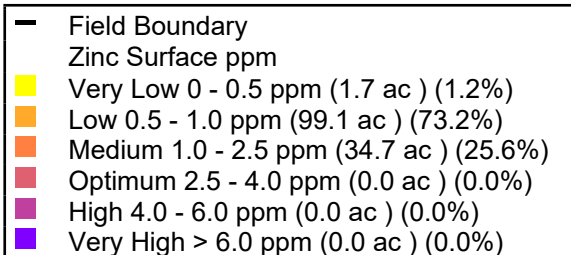


Grower: Ritchie Tarn
Farm: Advantage Trust
Field: D Hoffman 11
Area: 135.41 ac

Event Date(s): 5/15/2019
Season: 2019
Min: 0.41 ppm
Avg: 0.87 ppm
Max: 1.49 ppm

Season: 2019
Min Rate: 4.00 lb/ac
Avg Rate: 6.58 lb/ac
Max Rate: 13.00 lb/ac
Total Product: 662.48 lb
Applied Area: 100.71 ac
Product: Zinc Sulfate

Order Id: 766064
Order Task Id: 21191497
Crop - Year 1: SOYBEANS
Purpose - Year 1: Dry Grain
Yield Goal - Year 1: 40
Task: Main Recs - Zn Rec



Product Summary

Season: 2019
Grower: Ritchie Tarn
Farm: Advantage Trust
Field: D Hoffman 11
Area: 135.41 ac

K2O

| Recommendation | Rec Acres | Avg Rec Rate | App Acres | Avg App Rate | Total Product |
|---|-----------|--------------|-----------|--------------|---------------|
| 0-0-60 766064 21191470 5/31/2019 2:22:20 PM(local) Soybeans Dry Grain 40 | 135.4 | 48.5 lb/ac | 117.9 | 55.7 lb/ac | 6,561.7 lb |

Lime

| Recommendation | Rec Acres | Avg Rec Rate | App Acres | Avg App Rate | Total Product |
|--|-----------|---------------|-----------|---------------|----------------|
| Lime, Ag 766064 21191461 5/31/2019 2:22:20 PM(local) Soybeans Dry Grain | 135.4 | 8,396.0 lb/ac | 122.5 | 9,279.6 lb/ac | 1,136,905.7 lb |

P2O5

| Recommendation | Rec Acres | Avg Rec Rate | App Acres | Avg App Rate | Total Product |
|---|-----------|--------------|-----------|--------------|---------------|
| 11-52-0 MAP 766064 21191488 5/31/2019 2:22:20 PM(local) SOYBEANS Dry Grain 40 No | 135.4 | 39.6 lb/ac | 108.1 | 49.6 lb/ac | 5,357.7 lb |

Sulfur

| Recommendation | Rec Acres | Avg Rec Rate | App Acres | Avg App Rate | Total Product |
|---|-----------|--------------|-----------|--------------|---------------|
| Sulfur 766064 21191479 5/31/2019 2:22:20 PM(local) Soybeans Dry Grain 40 | 135.4 | 8.3 lb/ac | 125.4 | 9.0 lb/ac | 1,122.3 lb |

Zinc

| Recommendation | Rec Acres | Avg Rec Rate | App Acres | Avg App Rate | Total Product |
|---|-----------|--------------|-----------|--------------|---------------|
| Zinc Sulfate 766064 21191497 5/31/2019 2:22:20 PM(local) SOYBEANS Dry Grain 40 | 135.4 | 4.9 lb/ac | 100.7 | 6.6 lb/ac | 662.5 lb |