

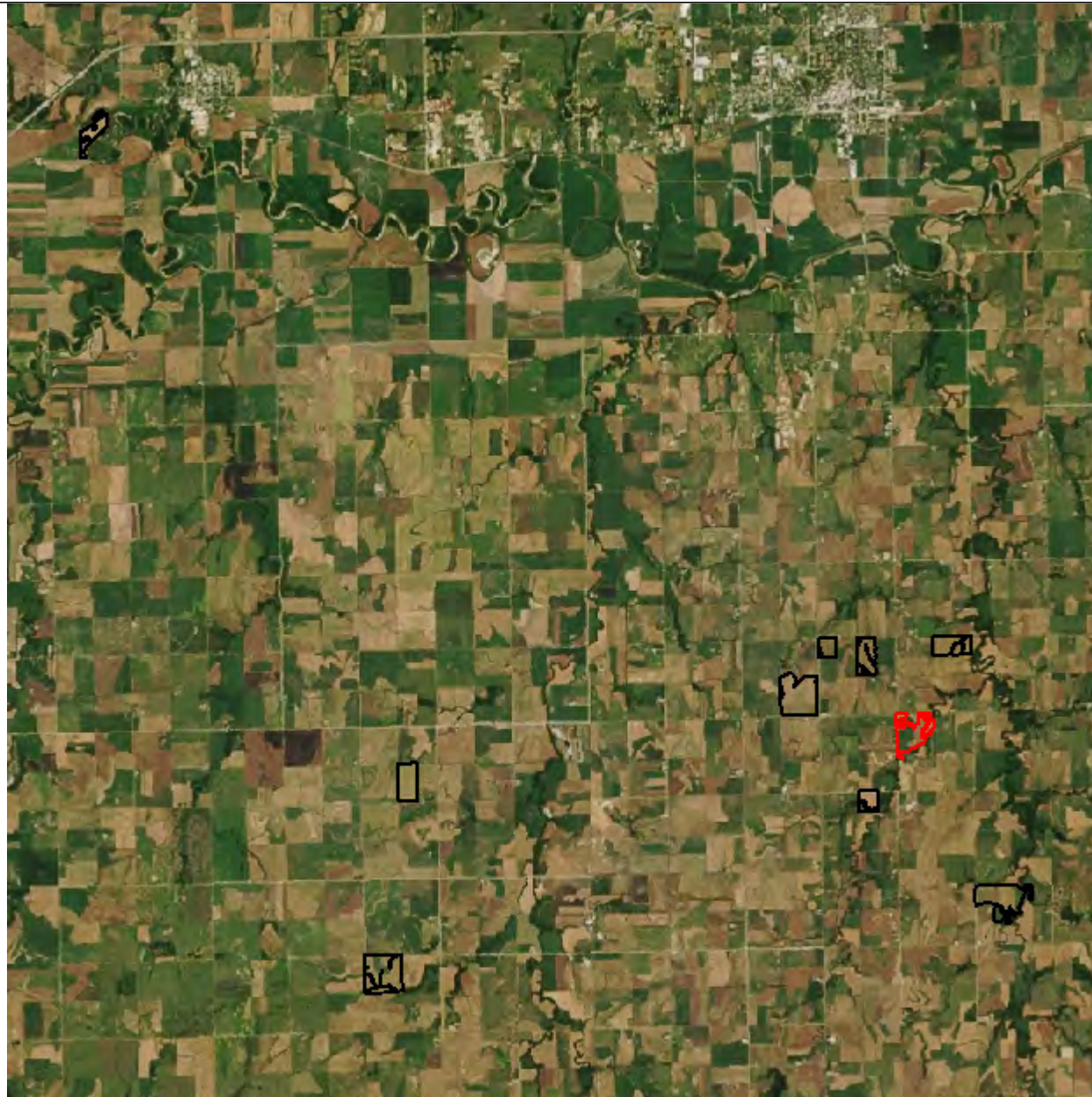


Advantage Trust

D Hoffman 34

Area: 101.08 ac

Farm Imagery



Grower: Ritchie Tarn
Farm: Advantage Trust
Field: D Hoffman 34
Number of Fields: 9
Area: 886.78 ac

— D Hoffman 34 (101.08 ac)
— Other Fields (785.70 ac)



One in = 2.2 miles

0.0 1.0 2.1 3.1 4.1 5.2



Soil Test Point Sample ID

Grower: Ritchie Tarn
Farm: Advantage Trust
Field: D Hoffman 34
Area: 101.08 ac
Event Date(s): 6/3/2019

— Field Boundary
● Soil Test Points



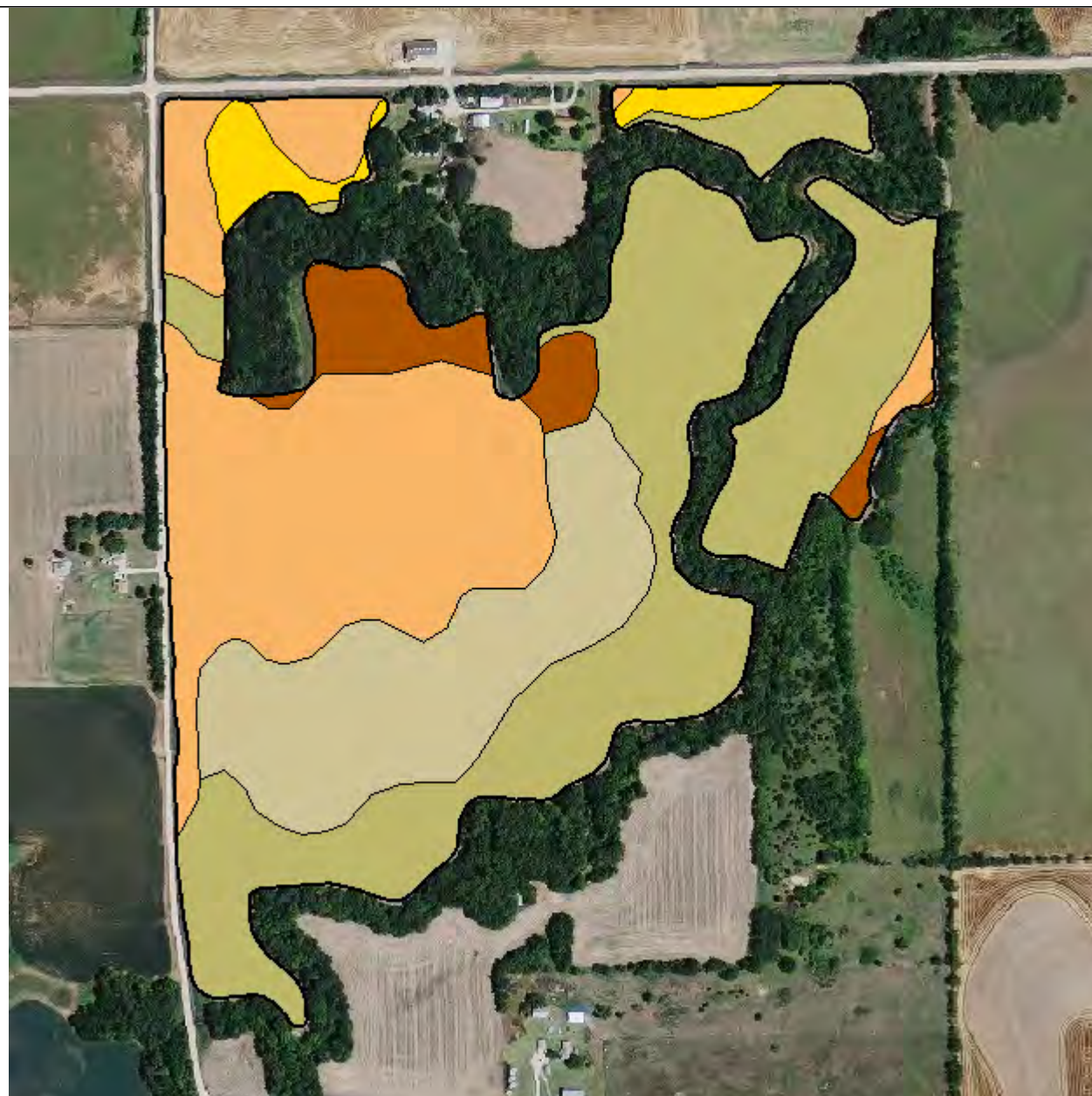
One in = 562 feet

0 263 527 790 1053 1317



Soil Type

Grower: Ritchie Tarn
Farm: Advantage Trust
Field: D Hoffman 34
Area: 101.08 ac



- Field Boundary
- Soil Type
- Clime silty clay loam, 7 to 15 percent slopes (5.8 ac) (5.7%)
- Geary silt loam, 3 to 7 percent slopes (3.4 ac) (3.4%)
- Hobbs silt loam, occasionally flooded (41.8 ac) (41.4%)
- Irwin silty clay loam, 1 to 3 percent slopes (31.0 ac) (30.6%)
- Irwin silty clay loam, 3 to 7 percent slopes (19.1 ac) (18.9%)



One in = 563 feet

0 264 527 791 1055 1319



Soil Test Results

Grower: Ritchie Tarn
Farm: Advantage Trust
Field: D Hoffman 34
Area: 101.08 ac
Event Date(s): 6/3/2019

Min:	5.0	6.1	2.0	8	11	120	1,395	333	14.8	3	0.3	39.0	1.9	16.6
Max:	6.4	6.7	3.0	52	84	270	2,789	966	25.7	18	0.8	68.7	3.9	34.8
Avg:	5.7	6.6	2.4	19	28	194	2,039	549	19.6	6	0.5	51.9	2.5	23.1

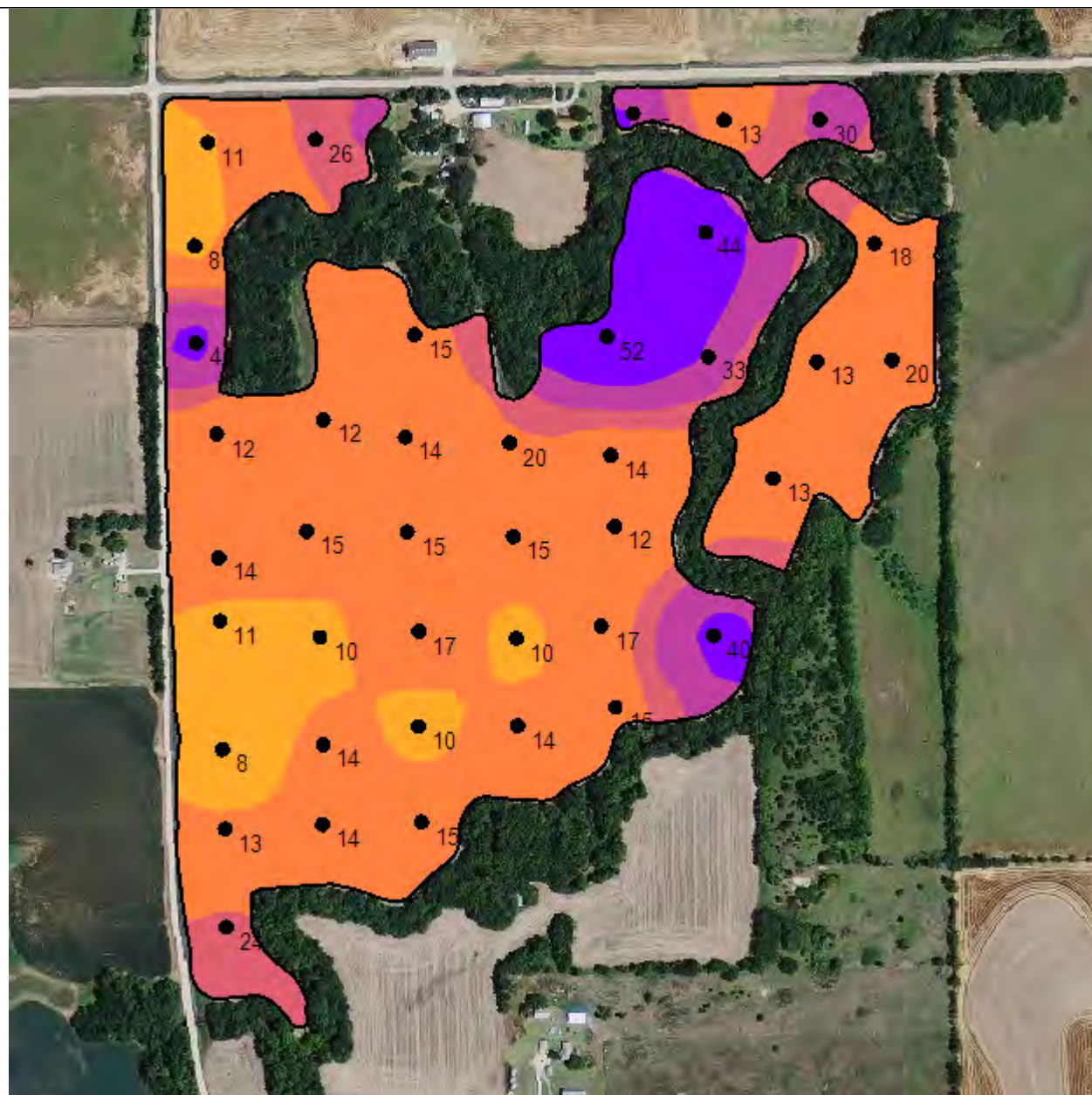
Sample ID	pH	BpH	OM	P Bray 1	P Bray 2	K	Ca	Mg	CEC	S ppm	Zn	%Ca	%K	%Mg
1	5.5	6.5	2.5	13	23	127	1,618	465	16.6	5	0.4	48.7	2.0	23.3
2	5.4	6.5	2.3	13	22	120	1,395	399	14.8	5	0.7	47.1	2.1	22.5
3	5.6	6.5	2.6	20	30	187	1,856	543	18.7	5	0.7	49.6	2.6	24.2
4	5.9	6.7	2.3	18	31	145	1,710	414	14.9	6	0.6	57.4	2.5	23.2
5	5.3	6.7	2.4	30	39	236	1,562	389	16.9	8	0.7	46.2	3.6	19.2
6	5.4	6.5	2.0	13	20	200	1,599	510	17.9	10	0.7	44.7	2.9	23.7
7	5.0	6.3	2.2	35	44	227	1,755	469	22.5	18	0.8	39.0	2.6	17.4
8	5.2	6.1	2.5	26	34	169	1,871	527	21.7	10	0.5	43.1	2.0	20.2
9	6.4	6.7	2.4	11	20	202	2,717	844	23.2	6	0.3	58.6	2.2	30.3
10	5.9	6.6	2.3	8	12	186	2,375	676	21.7	6	0.3	54.7	2.2	26.0
11	6.4	6.7	2.6	40	66	262	2,597	426	18.9	5	0.8	68.7	3.6	18.8
12	6.4	6.7	2.4	12	18	223	2,777	728	22.5	5	0.4	61.7	2.5	27.0
13	6.2	6.7	2.8	14	23	204	2,485	547	19.9	4	0.6	62.4	2.6	22.9
14	6.3	6.7	2.4	11	19	204	2,484	511	19.2	5	0.6	64.7	2.7	22.2
15	5.6	6.5	2.7	8	14	197	2,180	491	20.3	7	0.6	53.7	2.5	20.2
16	5.8	6.6	2.6	13	20	246	1,914	351	16.2	7	0.8	59.1	3.9	18.1
17	5.8	6.6	2.5	24	39	177	1,979	423	17.2	4	0.8	57.5	2.6	20.5
18	5.6	6.5	2.5	14	19	165	1,877	744	20.9	6	0.5	44.9	2.0	29.7
19	5.4	6.4	2.4	14	22	179	2,103	607	22.4	7	0.4	46.9	2.0	22.6
20	5.9	6.6	2.5	10	11	233	2,277	563	20.1	6	0.4	56.6	3.0	23.3
21	5.5	6.5	2.5	15	19	218	2,142	509	20.9	7	0.3	51.2	2.7	20.3
22	5.8	6.5	2.5	12	17	215	2,563	731	24.1	6	0.3	53.2	2.3	25.3
23	5.1	6.7	2.9	15	17	252	1,621	384	19.3	8	0.7	42.0	3.3	16.6

24	6.1	6.6	2.6	14	23	234	2,662	674	22.7	4	0.3	58.6	2.6	24.7
25	5.8	6.6	2.7	15	23	172	2,197	503	19.3	6	0.4	56.9	2.3	21.7
26	6.1	6.6	2.5	17	34	270	2,755	882	25.4	5	0.4	54.2	2.7	28.9
27	5.8	6.5	2.0	10	12	189	2,515	634	22.6	5	0.3	55.6	2.1	23.4
28	5.3	6.7	2.4	15	22	137	1,676	452	18.1	4	0.4	46.3	1.9	20.8
29	5.4	6.5	2.5	14	21	157	1,677	462	17.6	5	0.5	47.6	2.3	21.9
30	6.0	6.6	2.1	10	15	180	1,927	839	20.1	4	0.3	47.9	2.3	34.8
31	6.2	6.6	2.4	15	31	244	2,789	966	25.7	3	0.4	54.3	2.4	31.3
32	5.7	6.5	2.5	20	27	202	2,140	651	21.0	5	0.4	51.0	2.5	25.8
33	5.6	6.6	2.3	52	84	193	1,621	333	14.9	3	0.6	54.4	3.3	18.6
34	5.5	6.5	3.0	14	18	229	1,733	416	17.2	5	0.4	50.4	3.4	20.2
35	5.6	6.5	2.6	12	20	191	2,274	693	23.0	5	0.3	49.4	2.1	25.1
36	5.4	6.5	2.2	17	30	142	1,608	461	17.1	4	0.4	47.0	2.1	22.5
37	5.3	6.7	2.2	15	22	124	1,526	420	16.5	5	0.3	46.2	1.9	21.2
38	5.2	6.7	2.3	40	46	140	1,528	445	17.9	4	0.5	42.7	2.0	20.7
39	5.4	6.5	2.5	33	53	160	1,791	496	18.9	5	0.5	47.4	2.2	21.9
40	5.7	6.6	2.4	44	66	209	1,700	395	15.6	5	0.6	54.5	3.4	21.1

P Bray 1 Surface

Grower: Ritchie Tarn
Farm: Advantage Trust
Field: D Hoffman 34
Area: 101.08 ac
Event Date(s): 6/3/2019

Season: 2019
Min: 8.18 ppm
Avg: 18.85 ppm
Max: 51.05 ppm



- Field Boundary
- P Bray 1 Surface ppm
- Very Low 0 - 5 ppm (0.0 ac) (0.0%)
- Low 5 - 12 ppm (12.2 ac) (12.1%)
- Medium 12 - 22 ppm (64.0 ac) (63.3%)
- Optimum 22 - 27 ppm (9.7 ac) (9.6%)
- High 27 - 35 ppm (7.4 ac) (7.3%)
- Excess > 35 ppm (7.8 ac) (7.7%)



One in = 562 feet

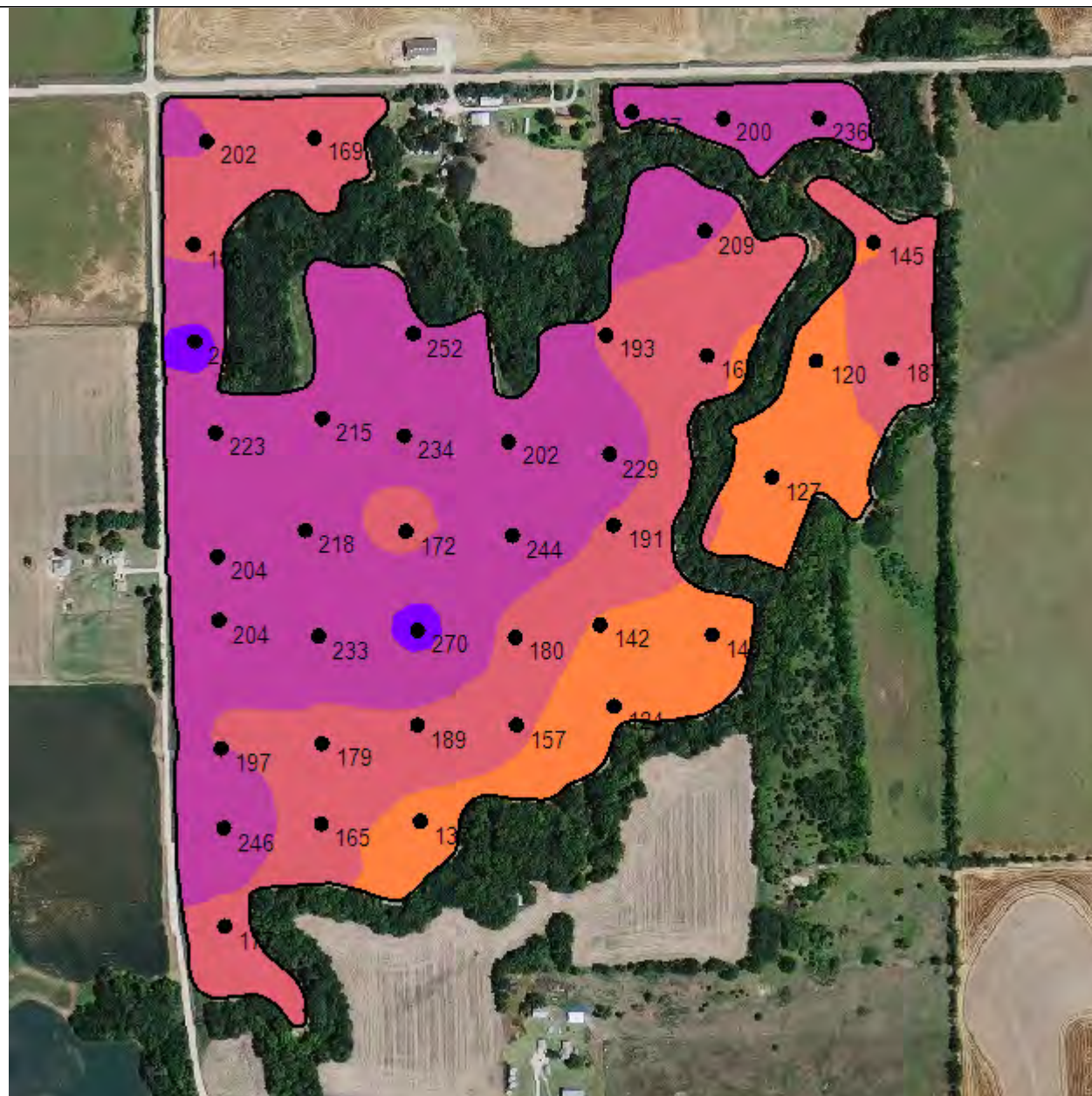
0 264 527 791 1054 1318



Potassium Surface

Grower: Ritchie Tarn
Farm: Advantage Trust
Field: D Hoffman 34
Area: 101.08 ac
Event Date(s): 6/3/2019

Season: 2019
Min: 122.75 ppm
Avg: 191.38 ppm
Max: 261.99 ppm



- Field Boundary
- Potassium Surface ppm
- Very Low 0 - 40 ppm (0.0 ac) (0.0%)
- Low 40 - 80 ppm (0.0 ac) (0.0%)
- Medium 80 - 150 ppm (16.7 ac) (16.5%)
- Optimum 150 - 200 ppm (34.6 ac) (34.2%)
- High 200 - 250 ppm (48.7 ac) (48.2%)
- Very High > 250 ppm (1.1 ac) (1.1%)



One in = 562 feet

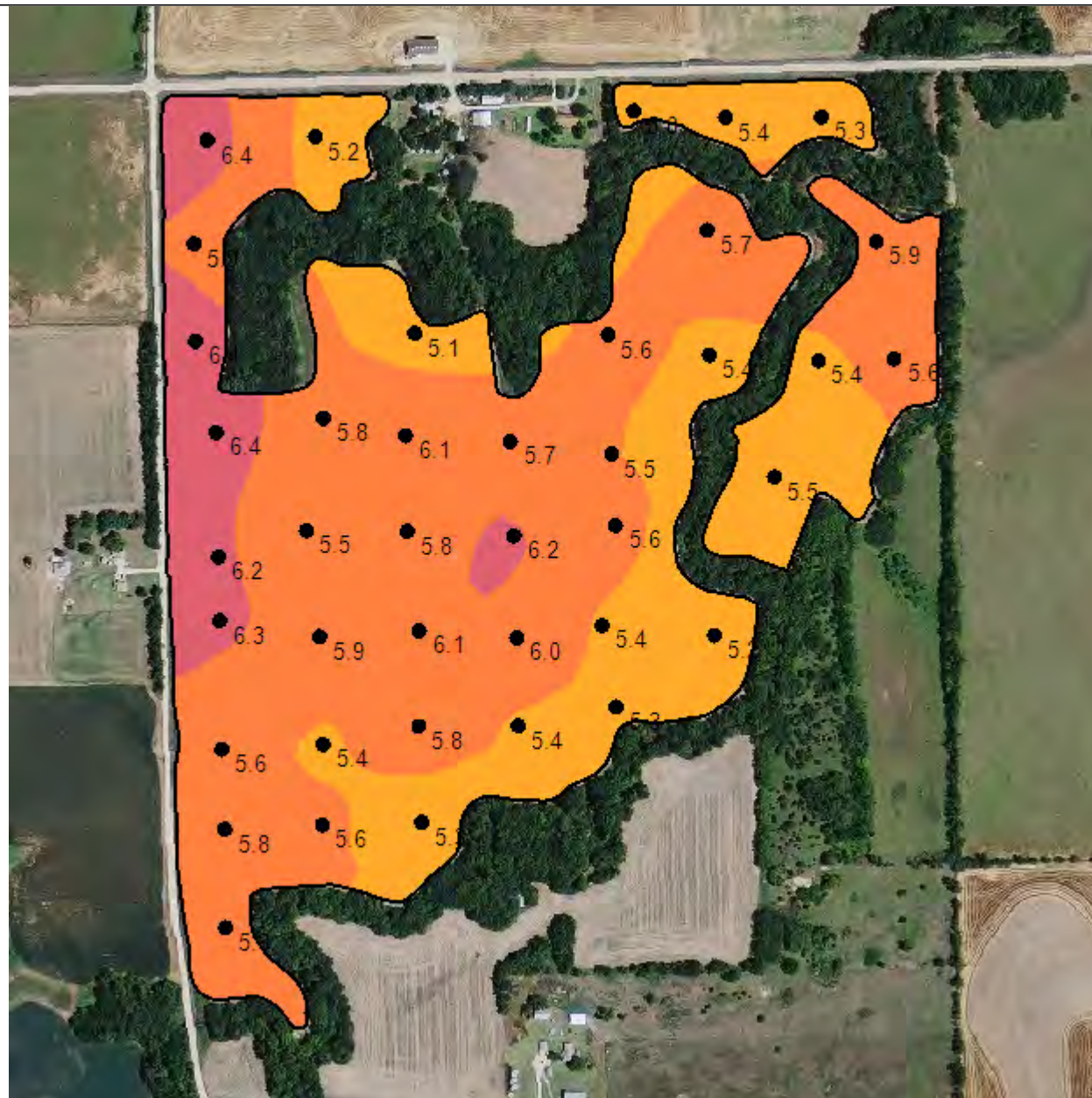
0 263 527 790 1053 1317



pH Surface

Grower: Ritchie Tarn
Farm: Advantage Trust
Field: D Hoffman 34
Area: 101.08 ac
Event Date(s): 6/3/2019

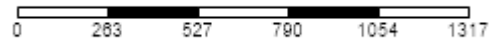
Season: 2019
Min: 5.00
Avg: 5.68
Max: 6.48



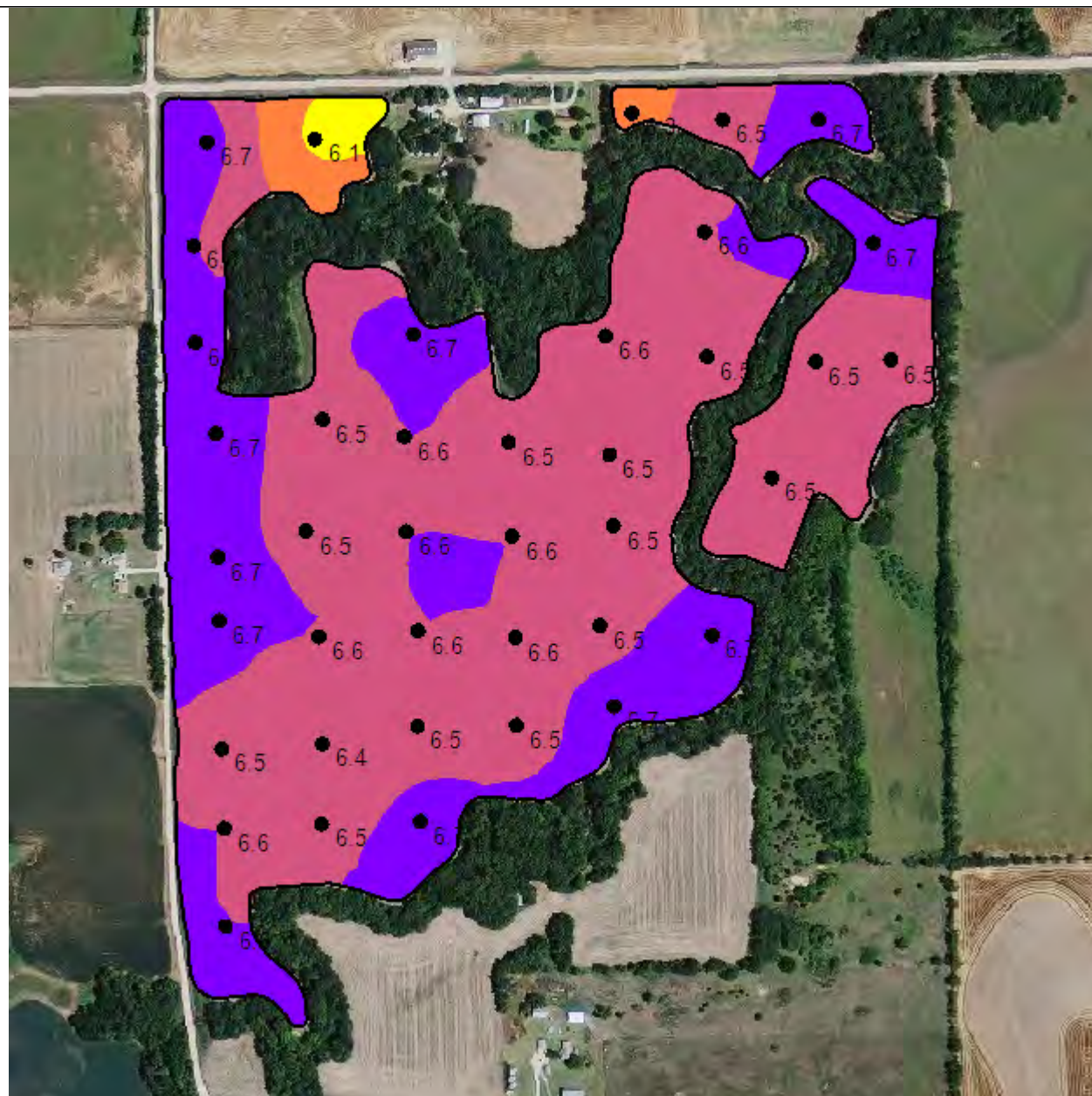
—	Field Boundary
	pH Surface
Yellow	Excessive Acid 0 - 5 pH (0.0 ac) (0.0%)
Orange	Acidic 5.1 - 5.5 pH (32.9 ac) (32.6%)
Light Orange	Slightly Acidic 5.5 - 6.1 pH (58.7 ac) (58.1%)
Pink	Grain Optimum 6.1 - 6.6 pH (9.4 ac) (9.3%)
Purple	Alfalfa Optimum 6.6 - 7.5 pH (0.0 ac) (0.0%)
Dark Purple	Alkaline > 7.5 pH (0.0 ac) (0.0%)



One in = 562 feet



BpH Surface



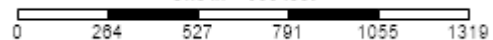
Grower: Ritchie Tarn
Farm: Advantage Trust
Field: D Hoffman 34
Area: 101.08 ac
Event Date(s): 6/3/2019

Season: 2019
Min: 6.11
Avg: 6.57
Max: 6.73

—	Field Boundary
	BpH Surface
Yellow	0.0 - 6.2 (1.2 ac) (1.2%)
Orange	6.2 - 6.4 (2.3 ac) (2.3%)
Pink	6.4 - 6.6 (66.4 ac) (65.7%)
Purple	> 6.6 (31.2 ac) (30.9%)



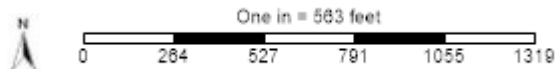
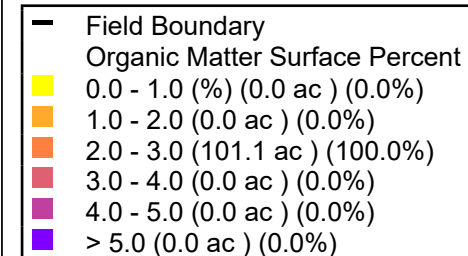
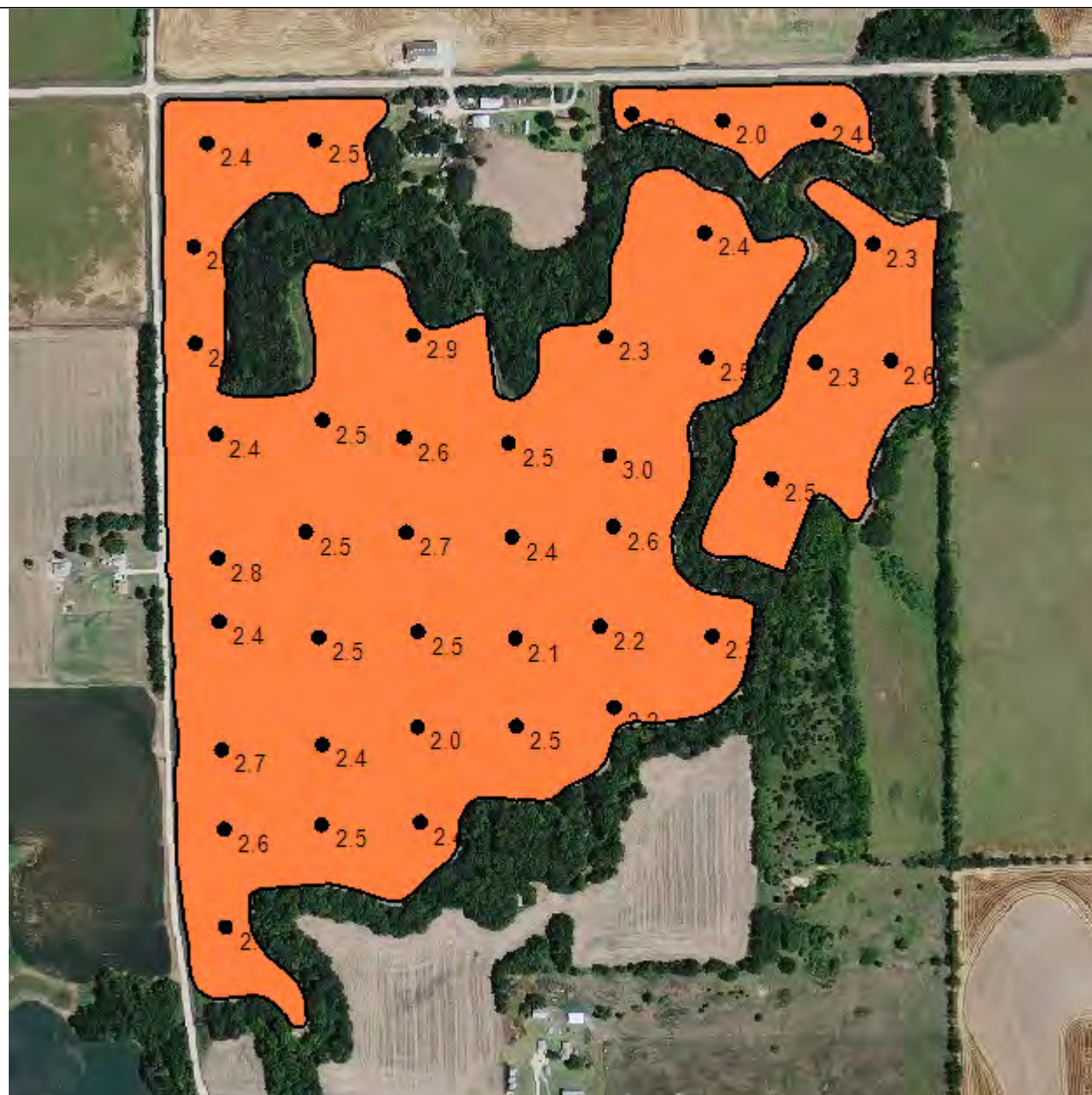
One in = 563 feet



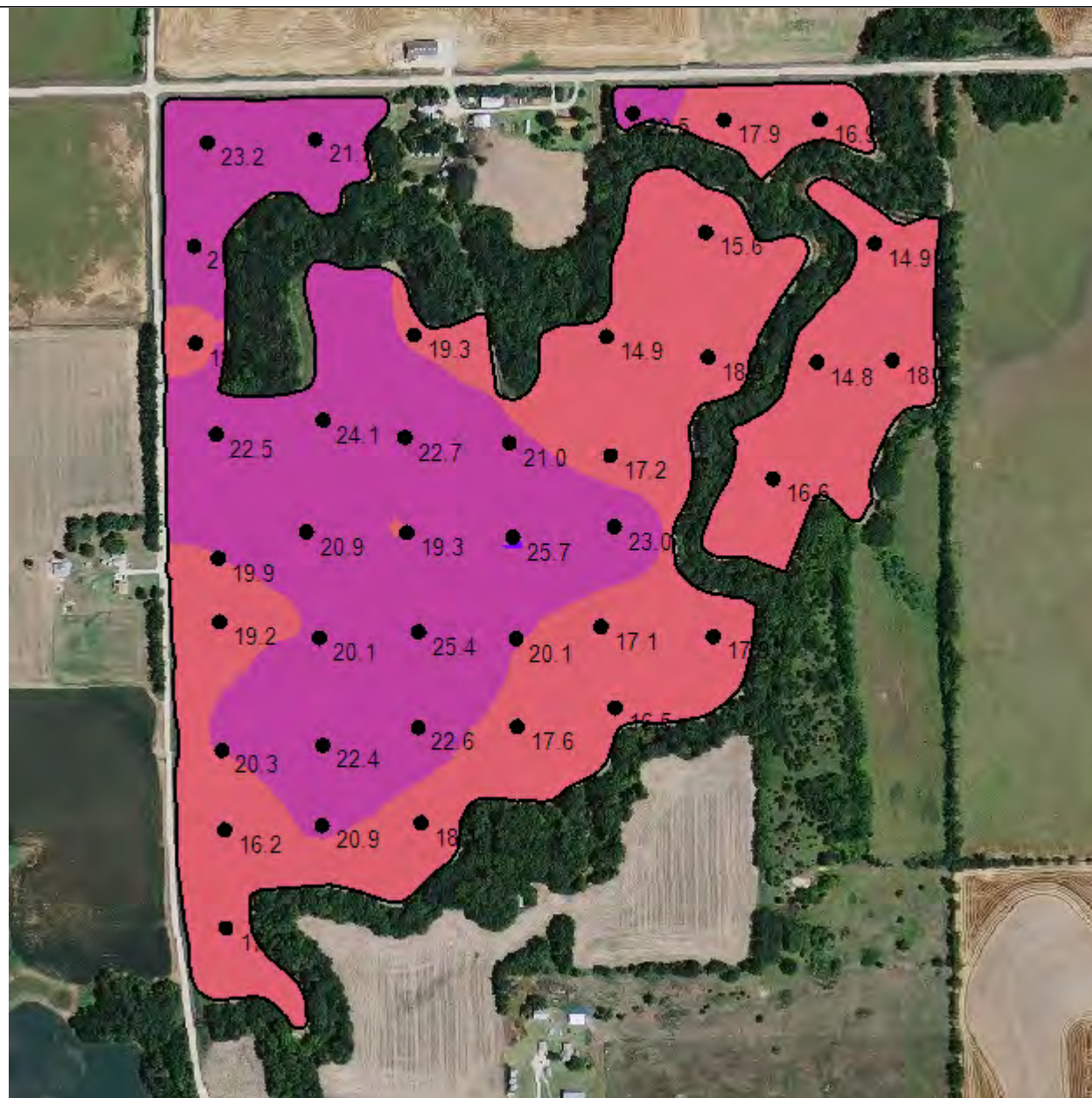
Organic Matter Surface

Grower: Ritchie Tarn
Farm: Advantage Trust
Field: D Hoffman 34
Area: 101.08 ac
Event Date(s): 6/3/2019

Season: 2019
Min: 2.02 Percent
Avg: 2.46 Percent
Max: 2.97 Percent

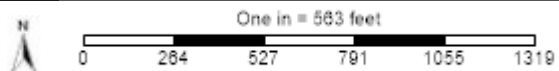
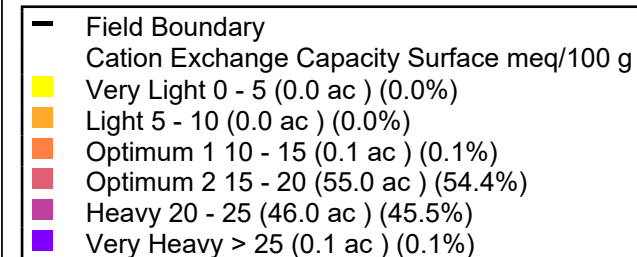


Cation Exchange Capacity Surface



Grower: Ritchie Tarn
Farm: Advantage Trust
Field: D Hoffman 34
Area: 101.08 ac
Event Date(s): 6/3/2019

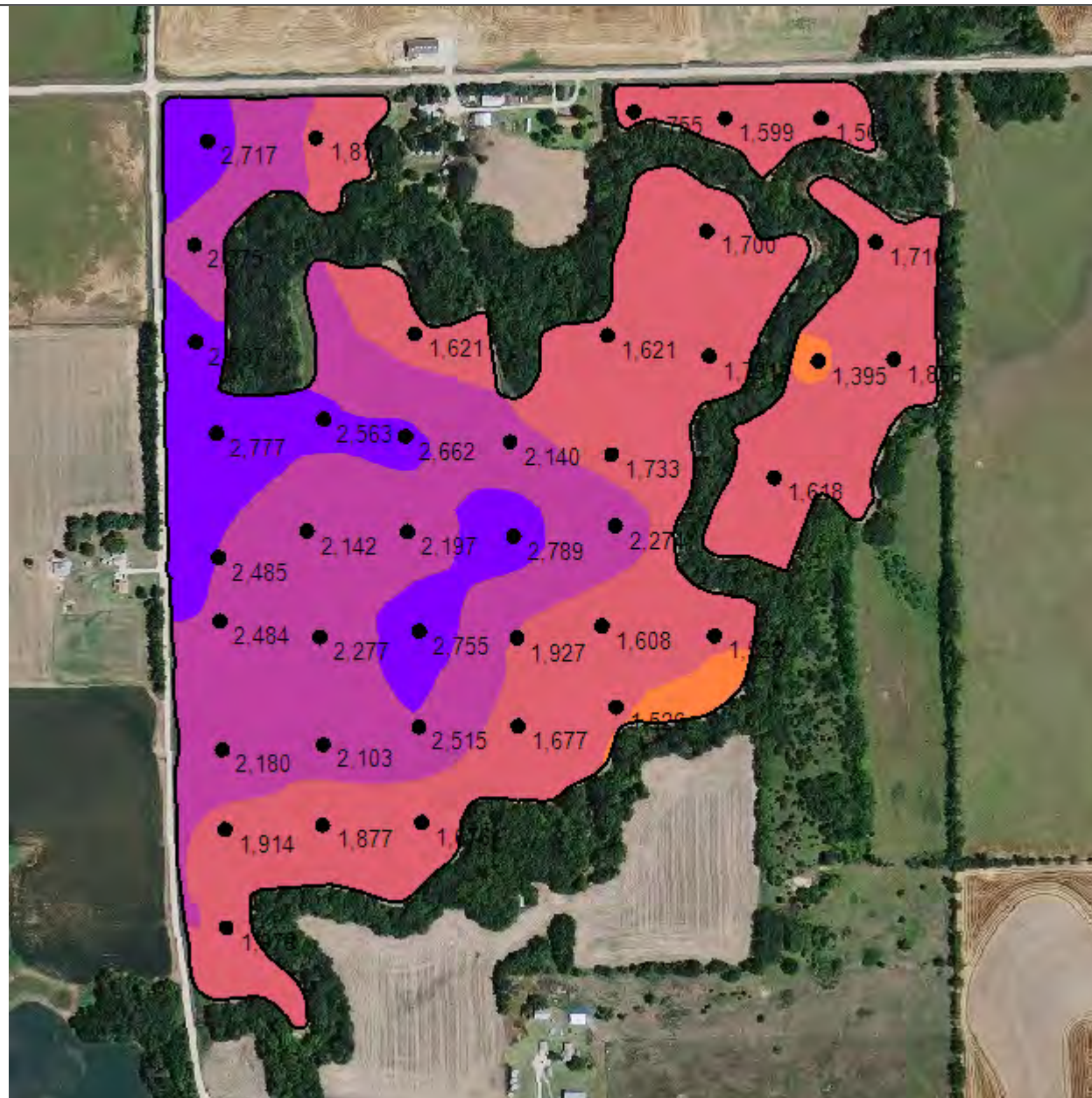
Season: 2019
Min: 14.99 meq/100 g
Avg: 19.50 meq/100 g
Max: 25.05 meq/100 g



Calcium Surface

Grower: Ritchie Tarn
Farm: Advantage Trust
Field: D Hoffman 34
Area: 101.08 ac
Event Date(s): 6/3/2019

Season: 2019
Min: 1,443.81 ppm
Avg: 2,026.14 ppm
Max: 2,758.18 ppm



—	Field Boundary
	Calcium Surface ppm
■	Very Low 0 - 500 ppm (0.0 ac) (0.0%)
■	Low 500 - 1000 ppm (0.0 ac) (0.0%)
■	Medium 1000 - 1500 ppm (1.9 ac) (1.8%)
■	Optimum 1500 - 2000 ppm (51.7 ac) (51.1%)
■	High 2000 - 2500 ppm (34.1 ac) (33.8%)
■	Very High > 2500 ppm (13.4 ac) (13.3%)



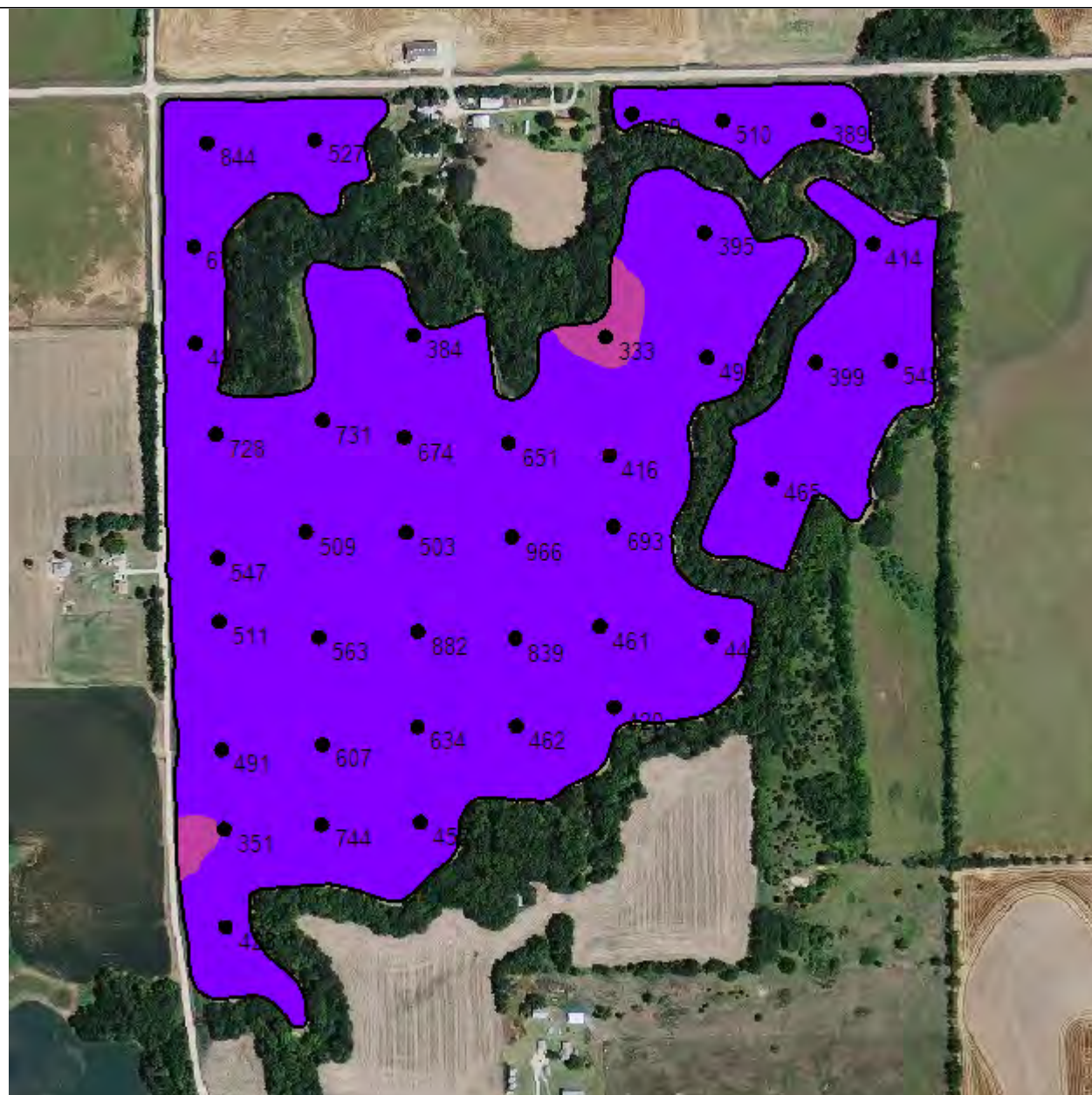
One in = 563 feet
0 264 527 791 1055 1319



Magnesium Surface

Grower: Ritchie Tarn
Farm: Advantage Trust
Field: D Hoffman 34
Area: 101.08 ac
Event Date(s): 6/3/2019

Season: 2019
Min: 338.49 ppm
Avg: 545.09 ppm
Max: 934.73 ppm



- Field Boundary
- Magnesium Surface ppm
- Very Low 0 - 37 ppm (0.0 ac) (0.0%)
- Low 37 - 75 ppm (0.0 ac) (0.0%)
- Medium 75 - 120 ppm (0.0 ac) (0.0%)
- Optimum 120 - 250 ppm (0.0 ac) (0.0%)
- High 250 - 375 ppm (2.0 ac) (2.0%)
- Excess > 375 ppm (99.1 ac) (98.0%)



One in = 563 feet

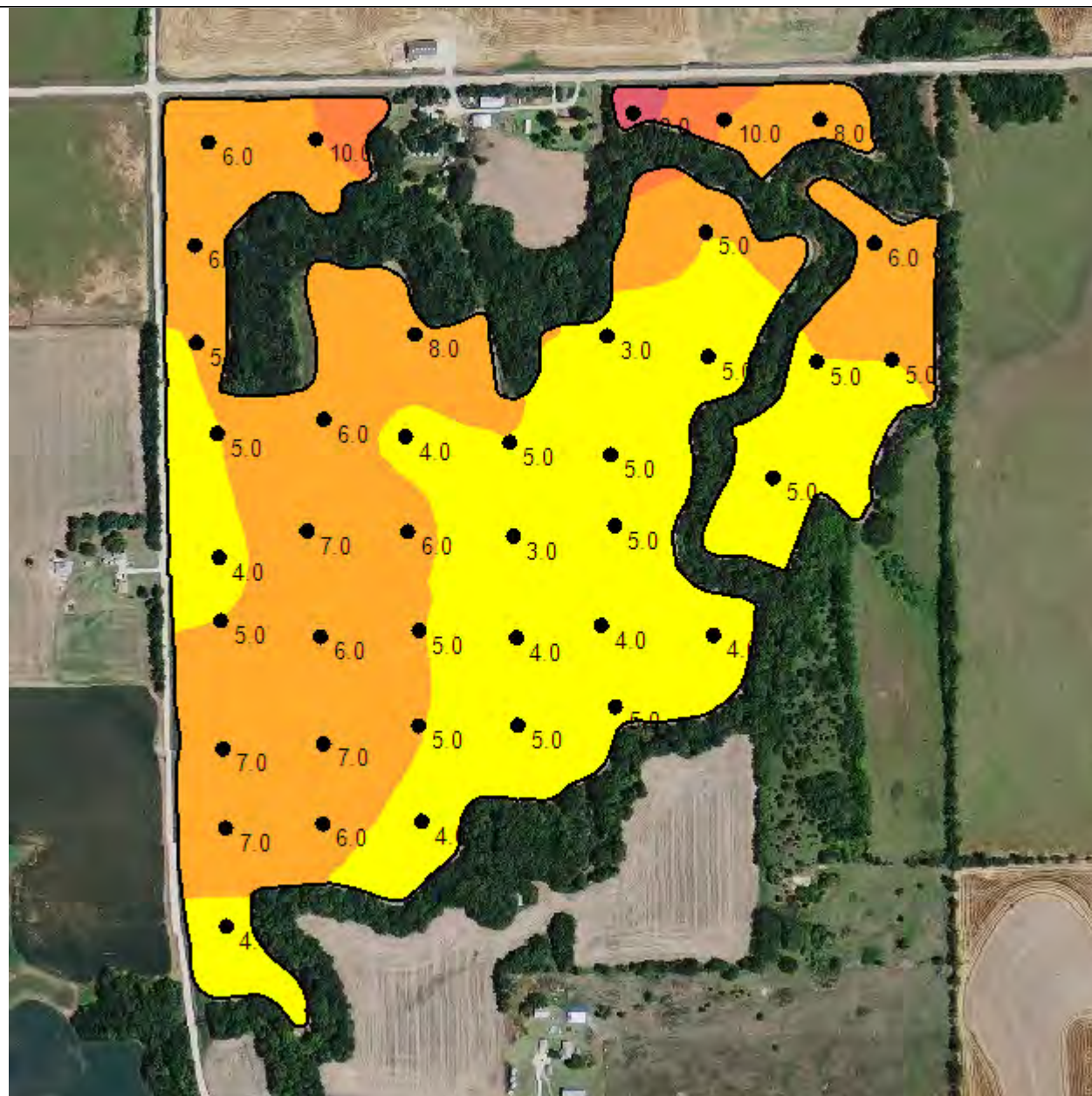
0 264 527 791 1055 1319



Sulfur - ppm

Grower: Ritchie Tarn
Farm: Advantage Trust
Field: D Hoffman 34
Area: 101.08 ac
Event Date(s): 6/3/2019

Season: 2019
Min: 3.18 ppm
Avg: 5.58 ppm
Max: 17.69 ppm



- Field Boundary
- Sulfur Surface ppm
- Very Low 0 - 5 ppm (49.6 ac) (49.1%)
- Low 5 - 10 ppm (48.9 ac) (48.4%)
- Medium 10 - 15 ppm (2.1 ac) (2.1%)
- Optimum 15 - 20 ppm (0.5 ac) (0.5%)
- High 20 - 25 ppm (0.0 ac) (0.0%)
- Very High > 25 ppm (0.0 ac) (0.0%)



One in = 563 feet

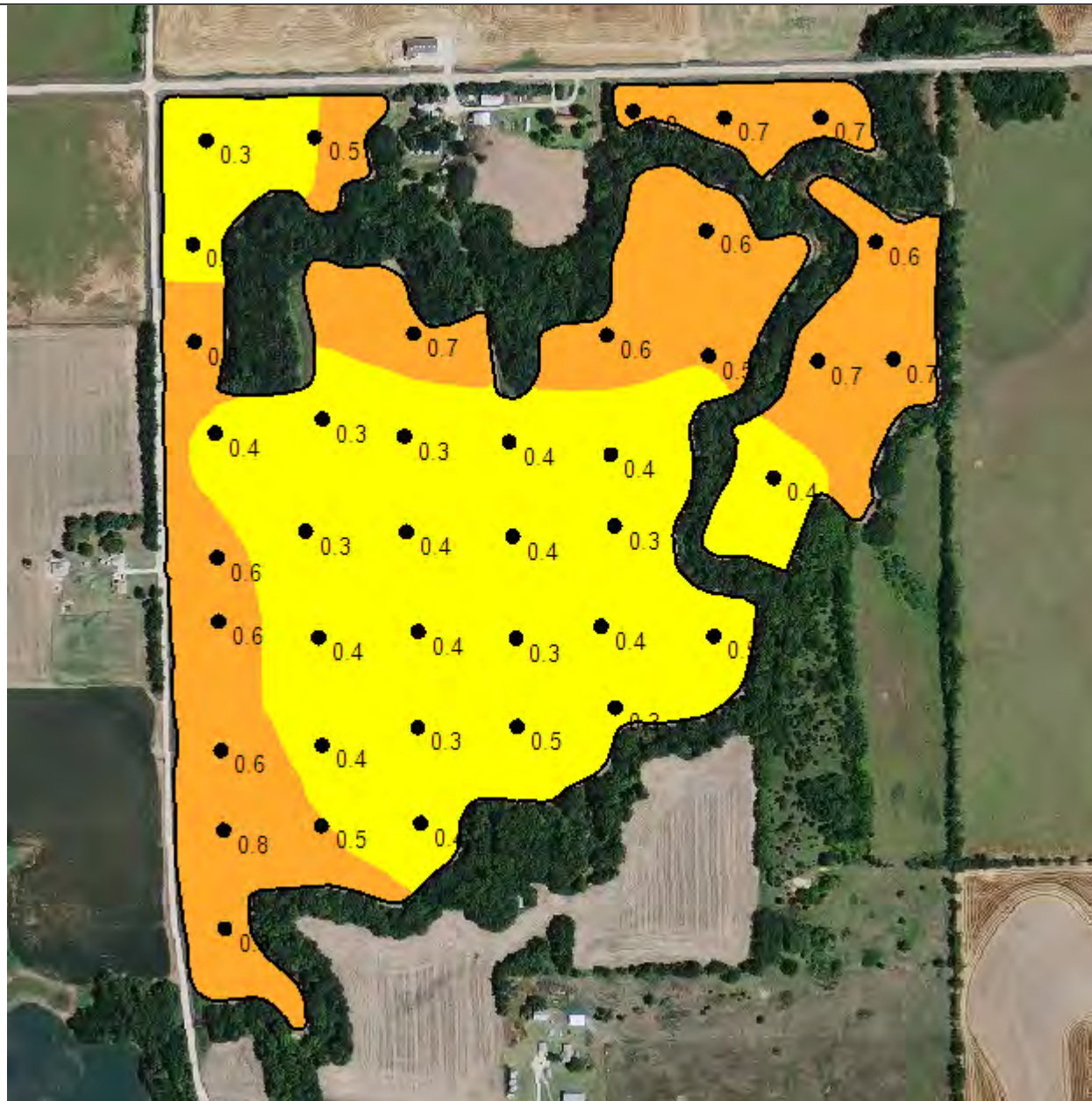
0 264 527 791 1055 1319



Zinc Surface

Grower: Ritchie Tarn
Farm: Advantage Trust
Field: D Hoffman 34
Area: 101.08 ac
Event Date(s): 6/3/2019

Season: 2019
Min: 0.29 ppm
Avg: 0.49 ppm
Max: 0.82 ppm



—	Field Boundary
	Zinc Surface ppm
Yellow	Very Low 0 - 0.5 ppm (58.5 ac) (57.9%)
Orange	Low 0.5 - 1.0 ppm (42.5 ac) (42.1%)
Light Orange	Medium 1.0 - 2.5 ppm (0.0 ac) (0.0%)
Pink	Optimum 2.5 - 4.0 ppm (0.0 ac) (0.0%)
Purple	High 4.0 - 6.0 ppm (0.0 ac) (0.0%)
Dark Purple	Very High > 6.0 ppm (0.0 ac) (0.0%)

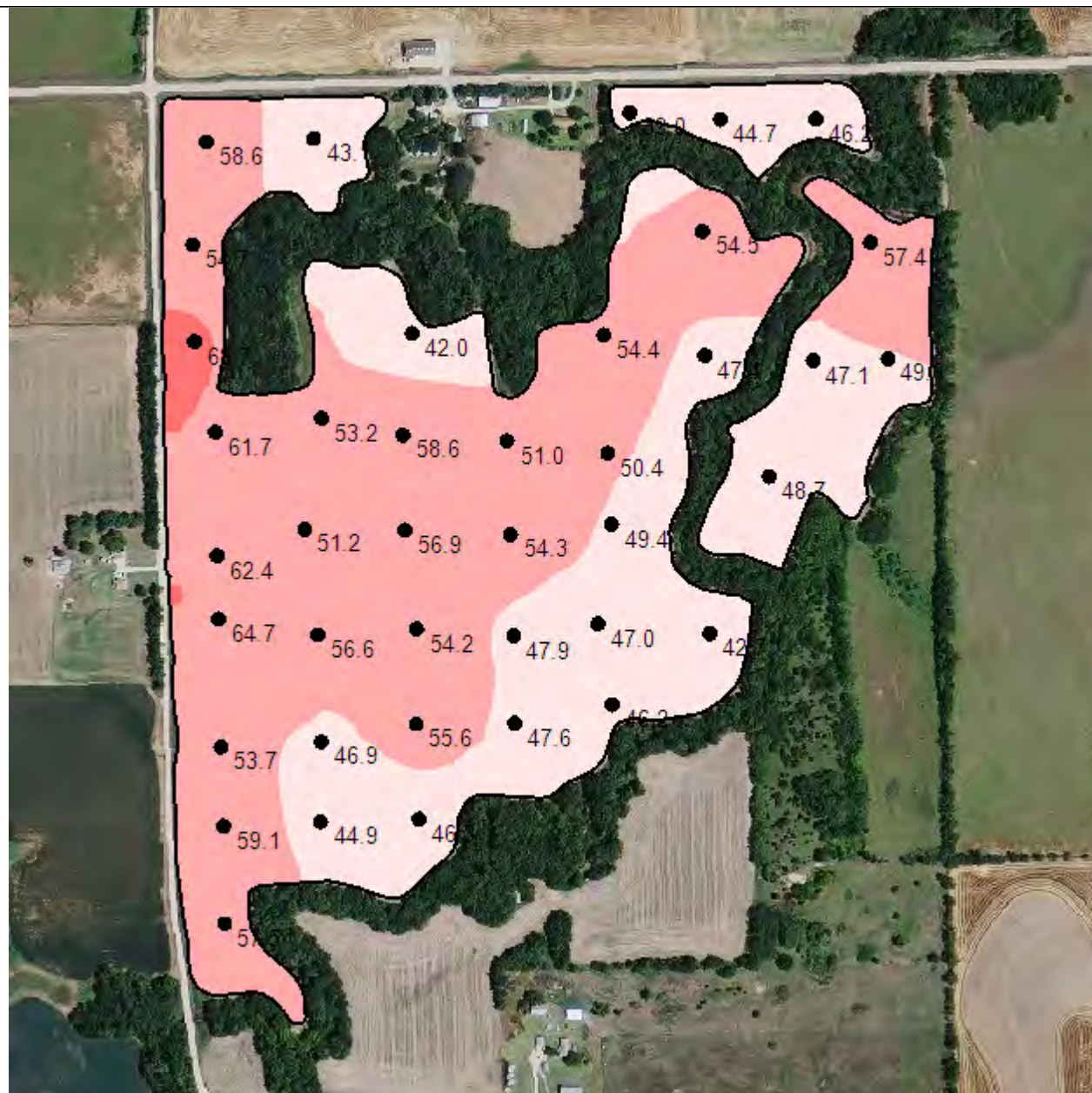


One in = 563 feet

0 264 527 791 1055 1319

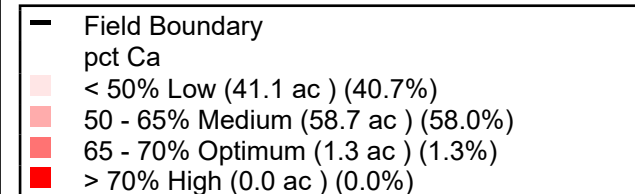


pct Ca



Grower: Ritchie Tarn
Farm: Advantage Trust
Field: D Hoffman 34
Area: 101.08 ac
Event Date(s): 6/3/2019

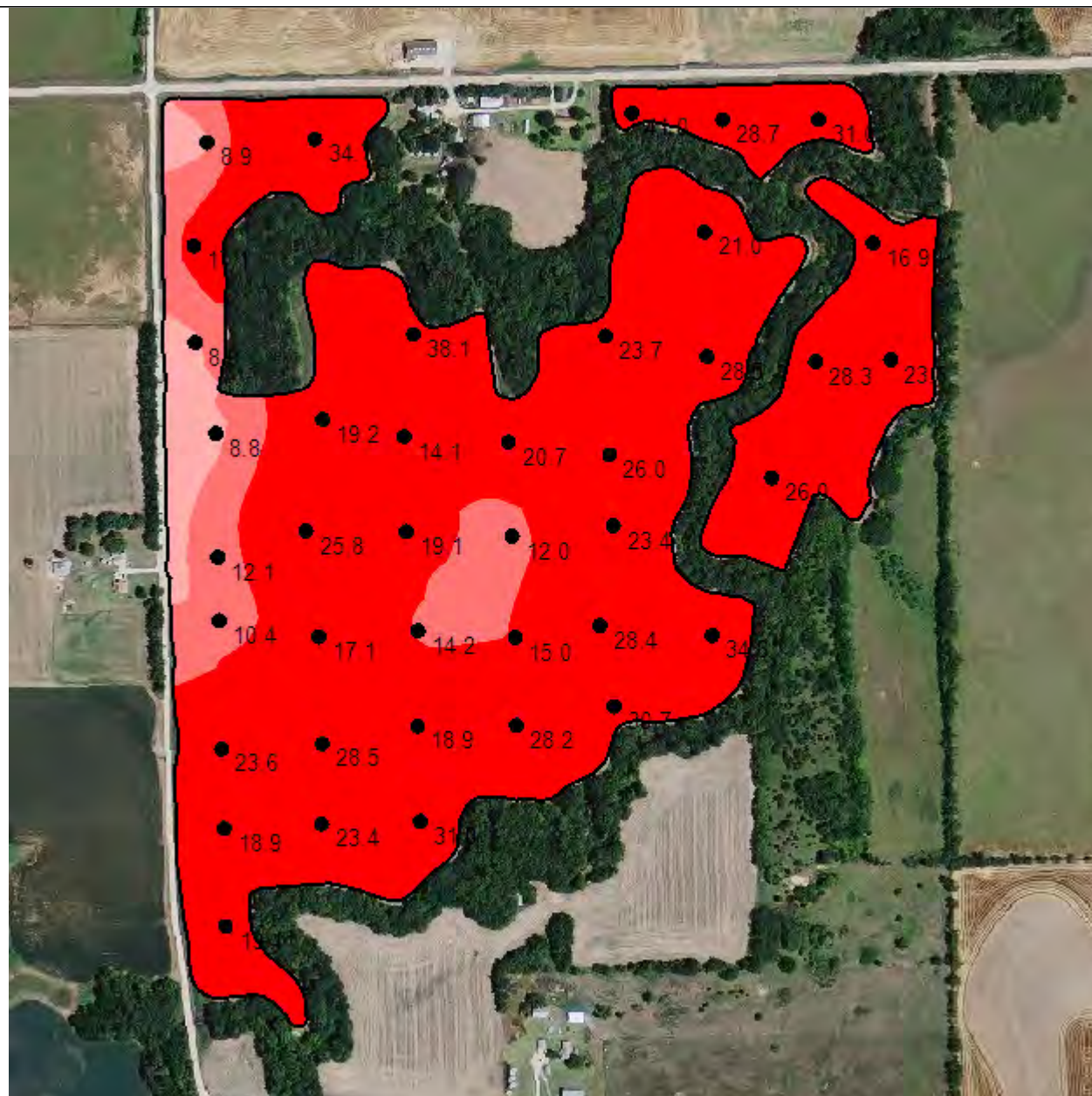
Season: 2019
Min: 38.99
Avg: 51.83
Max: 68.20



One in = 563 feet
0 264 527 791 1055 1318



pct H



Grower: Ritchie Tarn
Farm: Advantage Trust
Field: D Hoffman 34
Area: 101.08 ac
Event Date(s): 6/3/2019

Season: 2019
Min: 7.15
Avg: 22.65
Max: 40.83

—	Field Boundary
pct H	
□	< 5% Low (0.0 ac) (0.0%)
□	5 - 10% Medium (3.4 ac) (3.3%)
□	10 - 15% Optimum (9.6 ac) (9.5%)
■	> 15% High (88.1 ac) (87.2%)



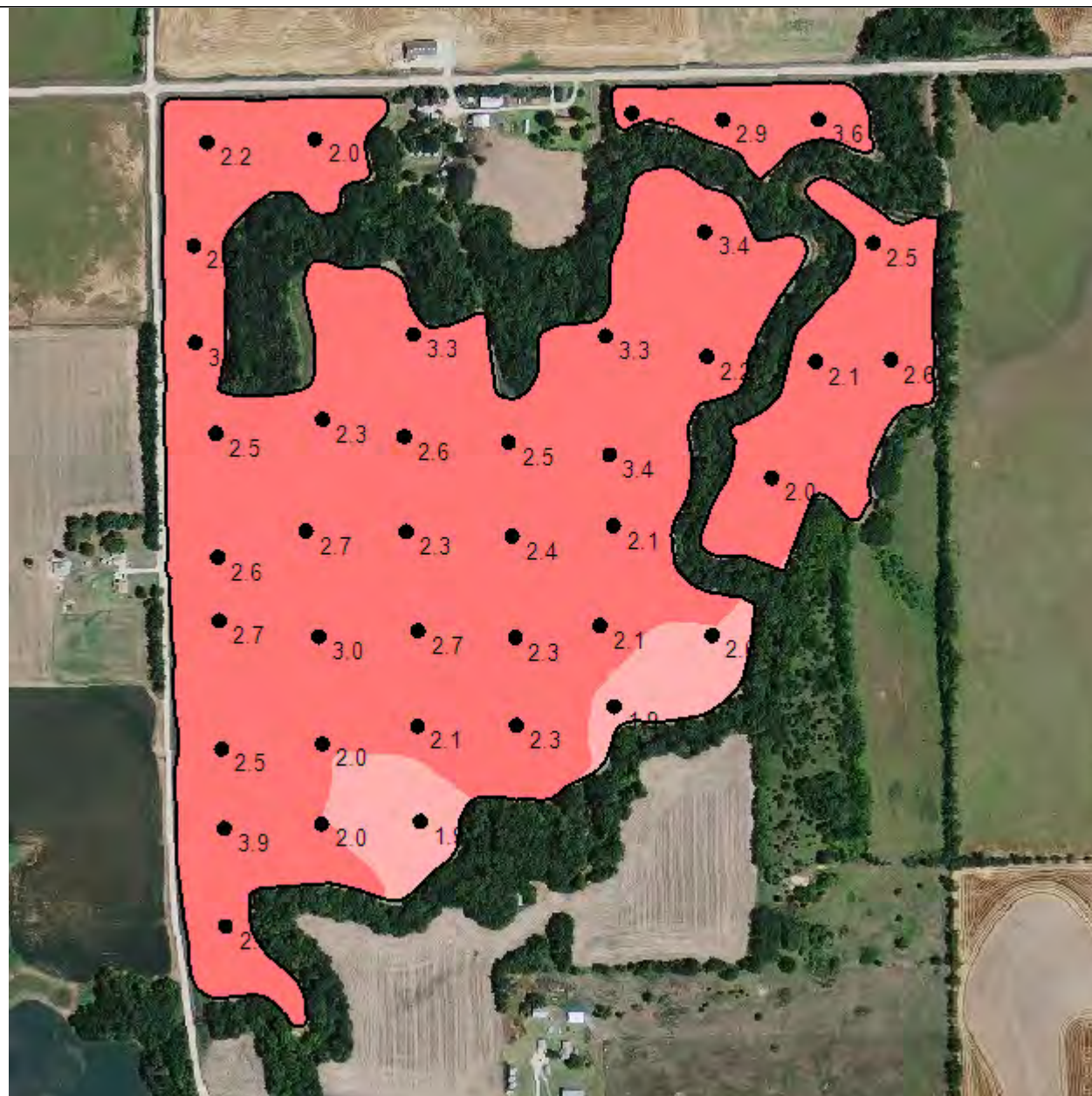
One in = 563 feet
0 264 527 791 1055 1319



pct K

Grower: Ritchie Tarn
Farm: Advantage Trust
Field: D Hoffman 34
Area: 101.08 ac
Event Date(s): 6/3/2019

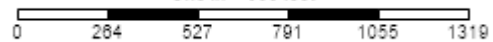
Season: 2019
Min: 1.90
Avg: 2.53
Max: 3.82



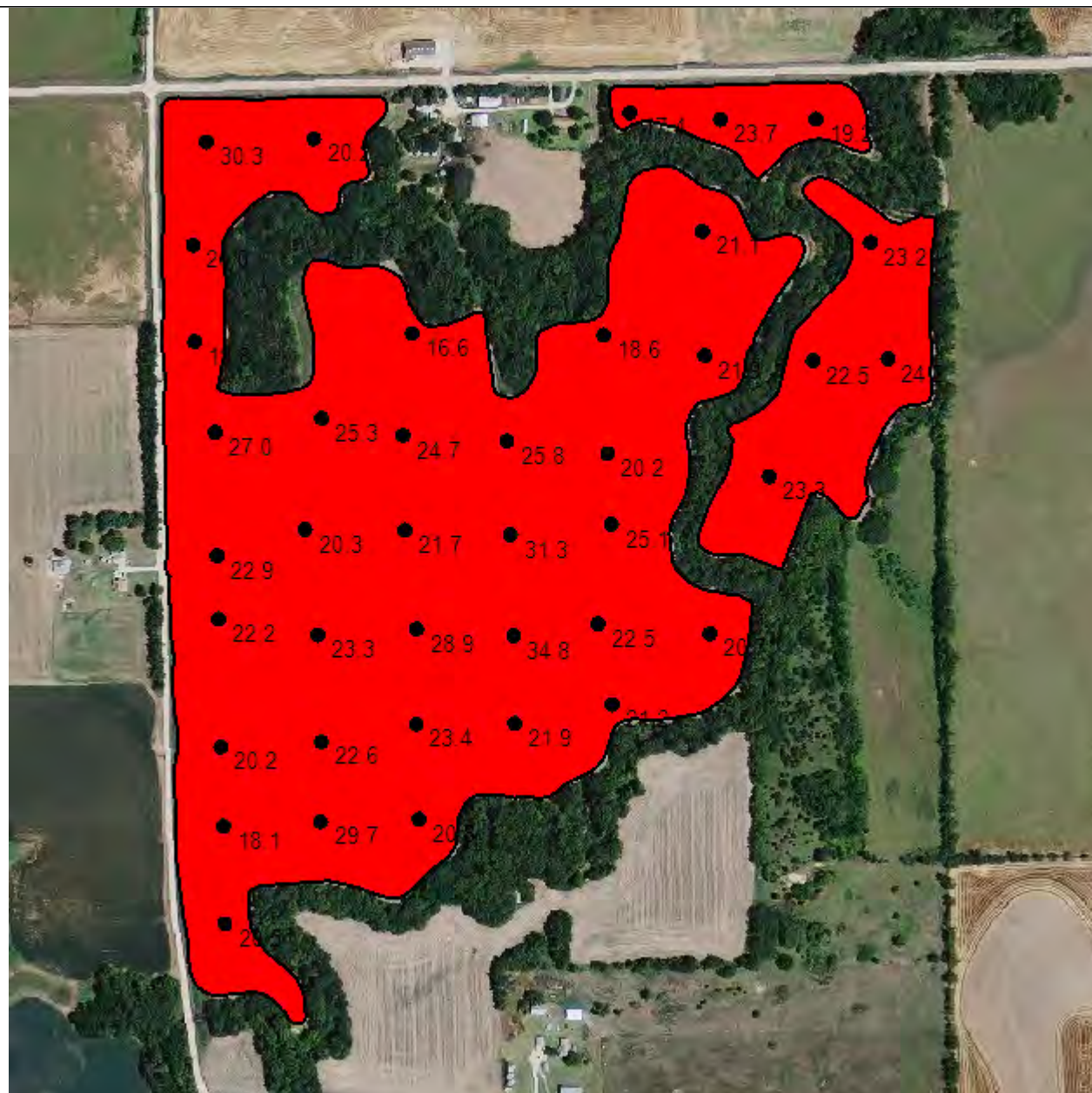
—	Field Boundary
pct K	
	< 1% Low (0.0 ac) (0.0%)
	1 - 2% Medium (7.4 ac) (7.3%)
	2 - 7% Optimum (93.7 ac) (92.7%)
	> 7% High (0.0 ac) (0.0%)



One in = 563 feet



pct Mg



Grower: Ritchie Tarn
Farm: Advantage Trust
Field: D Hoffman 34
Area: 101.08 ac
Event Date(s): 6/3/2019

Season: 2019
Min: 16.72
Avg: 22.99
Max: 33.94

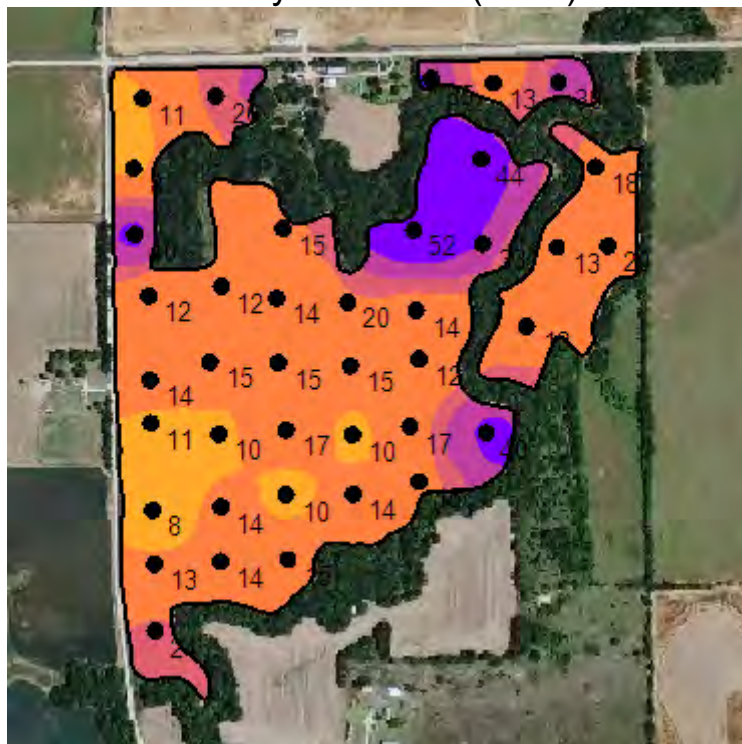
—	Field Boundary
	pct Mg
	< 5% Low (0.0 ac) (0.0%)
	5 - 10% Medium (0.0 ac) (0.0%)
	10 - 15% Optimum (0.0 ac) (0.0%)
	> 15% High (101.1 ac) (100.0%)



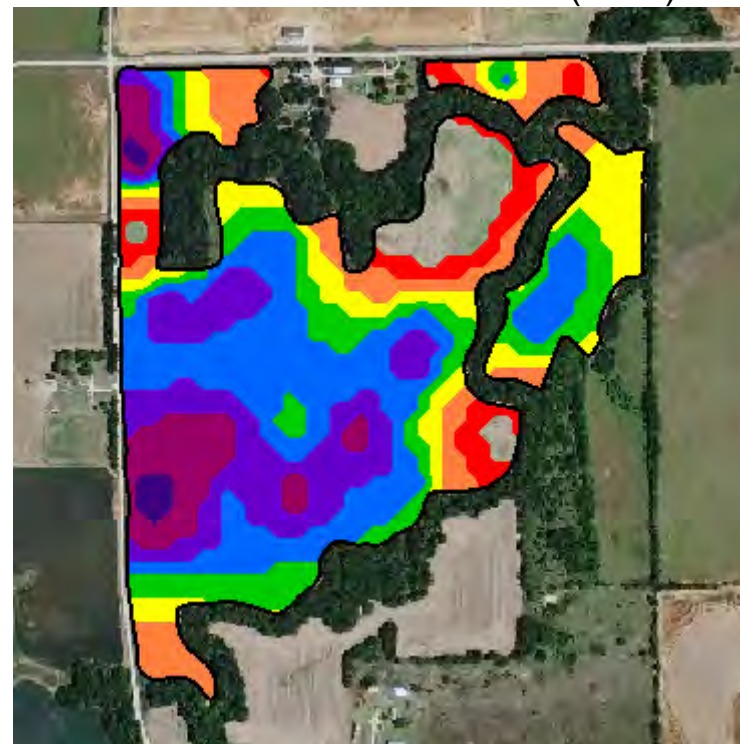
One in = 563 feet
0 264 527 791 1055 1319



P Bray 1 Surface (2019)



P Product Recommendation (2019)



Grower: Ritchie Tarn
Farm: Advantage Trust
Field: D Hoffman 34
Area: 101.08 ac

Event Date(s): 6/3/2019
Season: 2019
Min: 8.18 ppm
Avg: 18.85 ppm
Max: 51.05 ppm

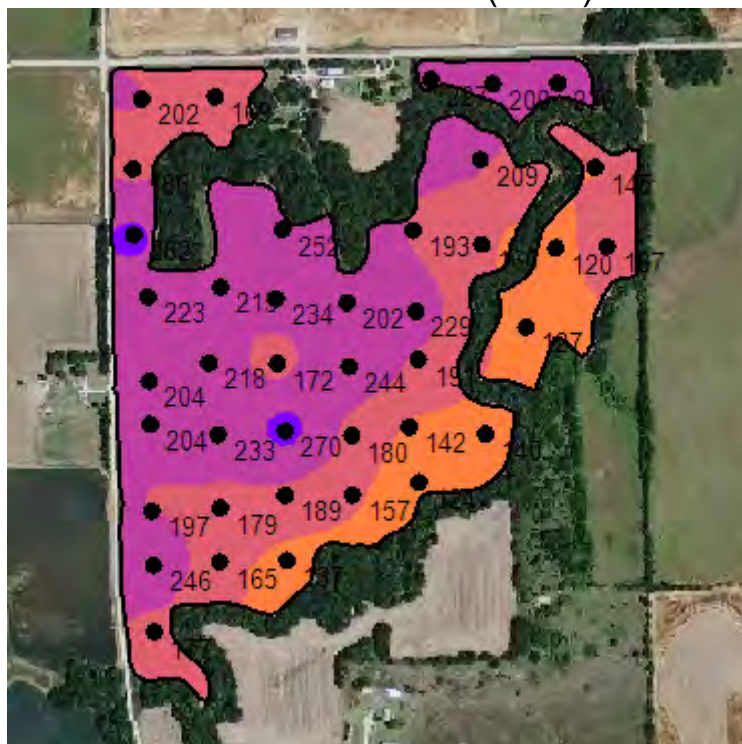
Season: 2019
Min Rate: 40.00 lb/ac
Avg Rate: 73.03 lb/ac
Max Rate: 110.00 lb/ac
Total Product: 6,811.67 lb
Applied Area: 93.28 ac
Product: 11-52-0 MAP

Task: Main Recs - P Rec

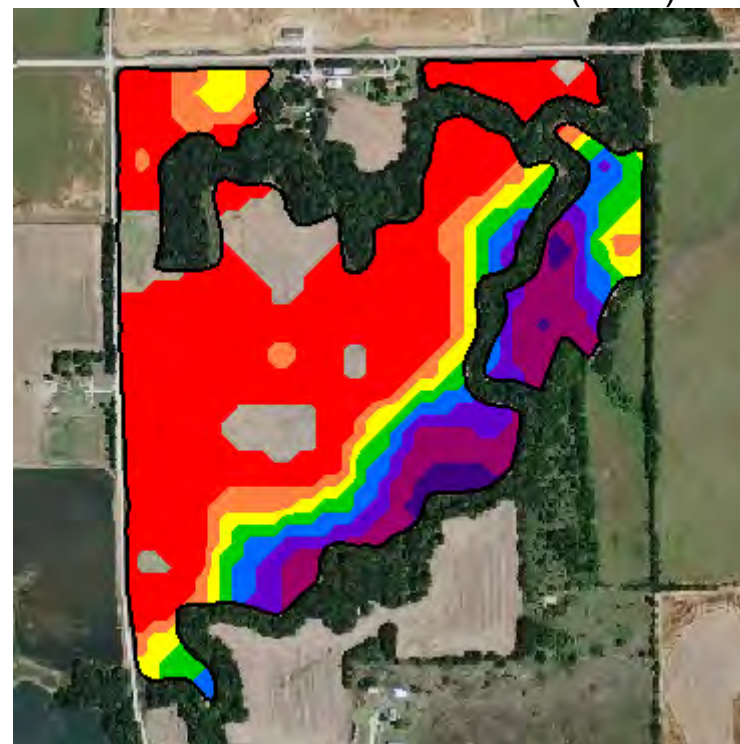
—	Field Boundary
	P Bray 1 Surface ppm
Yellow	Very Low 0 - 5 ppm (0.0 ac) (0.0%)
Orange	Low 5 - 12 ppm (12.2 ac) (12.1%)
Red	Medium 12 - 22 ppm (64.0 ac) (63.3%)
Pink	Optimum 22 - 27 ppm (9.7 ac) (9.6%)
Purple	High 27 - 35 ppm (7.4 ac) (7.3%)
Dark Purple	Excess > 35 ppm (7.8 ac) (7.7%)

—	Field Boundary
	P Product Recommendation lb/ac
Red	40 (6.2 ac) (6.2%)
Orange	50 (11.7 ac) (11.5%)
Yellow	60 (12.3 ac) (12.2%)
Green	70 (14.2 ac) (14.1%)
Blue	80 (24.8 ac) (24.5%)
Purple	90 (15.5 ac) (15.3%)
Dark Purple	100 (7.4 ac) (7.3%)
Black	110 (1.2 ac) (1.1%)

Potassium Surface (2019)



K Product Recommendation (2019)



Grower: Ritchie Tarn
Farm: Advantage Trust
Field: D Hoffman 34
Area: 101.08 ac

Event Date(s): 6/3/2019
Season: 2019
Min: 122.75 ppm
Avg: 191.38 ppm
Max: 261.99 ppm

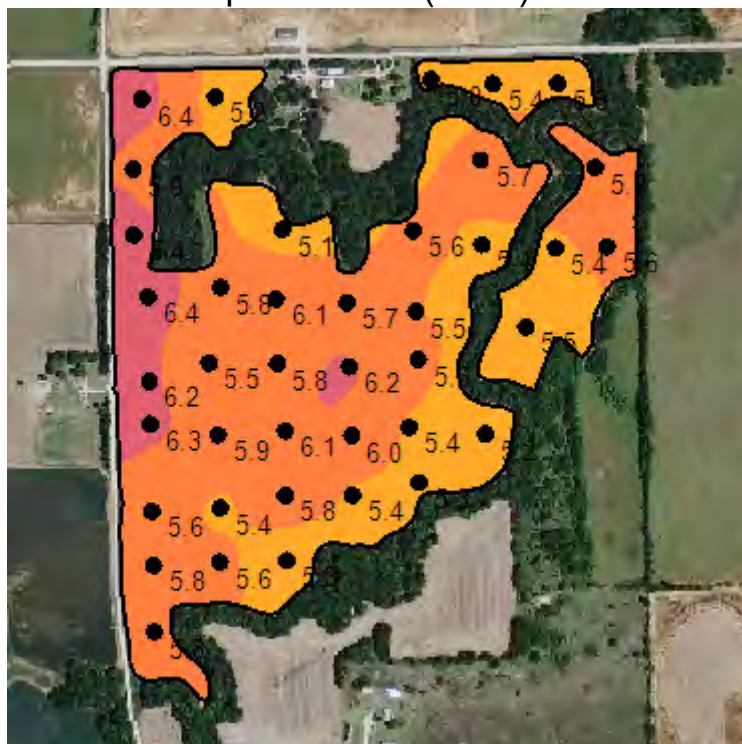
Season: 2019
Min Rate: 40.00 lb/ac
Avg Rate: 56.68 lb/ac
Max Rate: 110.00 lb/ac
Total Product: 5,145.66 lb
Applied Area: 90.79 ac
Product: 0-0-60

Task: Midwest Labs - K Rec

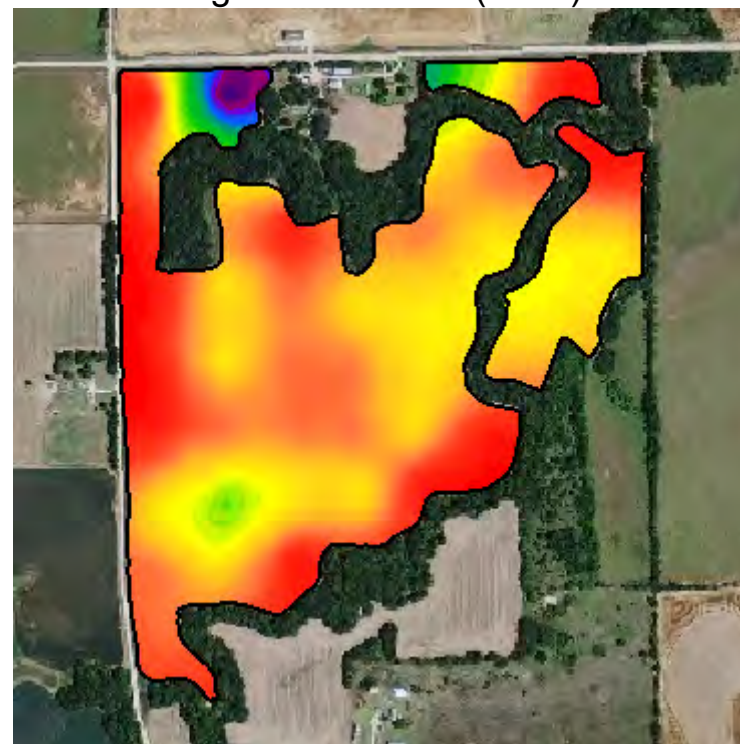
—	Field Boundary
	Potassium Surface ppm
Yellow	Very Low 0 - 40 ppm (0.0 ac) (0.0%)
Orange	Low 40 - 80 ppm (0.0 ac) (0.0%)
Light Orange	Medium 80 - 150 ppm (16.7 ac) (16.5%)
Pink	Optimum 150 - 200 ppm (34.6 ac) (34.2%)
Purple	High 200 - 250 ppm (48.7 ac) (48.2%)
Dark Purple	Very High > 250 ppm (1.1 ac) (1.1%)

—	Field Boundary
	K Product Recommendation lb/ac
Red	40 (49.0 ac) (48.5%)
Orange	50 (8.0 ac) (7.9%)
Yellow	60 (6.5 ac) (6.4%)
Green	70 (6.1 ac) (6.1%)
Blue	80 (5.4 ac) (5.3%)
Purple	90 (5.9 ac) (5.8%)
Dark Purple	100 (8.2 ac) (8.1%)
Very Dark Purple	110 (1.7 ac) (1.7%)

pH Surface (2019)



Ag Lime 50 ECC (2019)



Grower: Ritchie Tarn
Farm: Advantage Trust
Field: D Hoffman 34
Area: 101.08 ac

Event Date(s): 6/3/2019
Season: 2019
Min: 5.00
Avg: 5.68
Max: 6.48

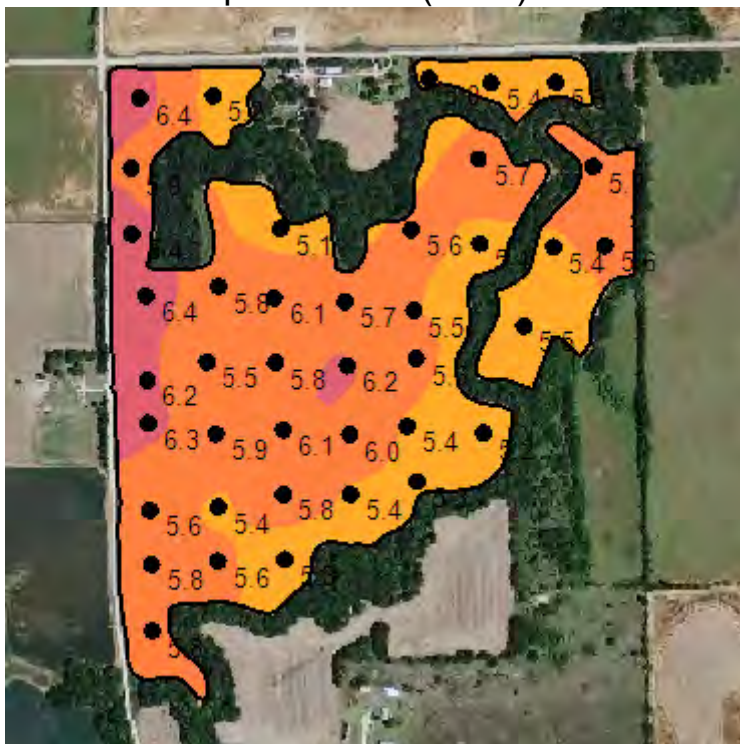
Season: 2019
Min Rate: 5,500.00 lb/ac
Avg Rate: 8,675.18 lb/ac
Max Rate: 17,800.00 lb/ac
Total Product: 876,908.47 lb
Applied Area: 101.08 ac
Product: Lime, Ag

Task: Midwest Labs - Lime Rec

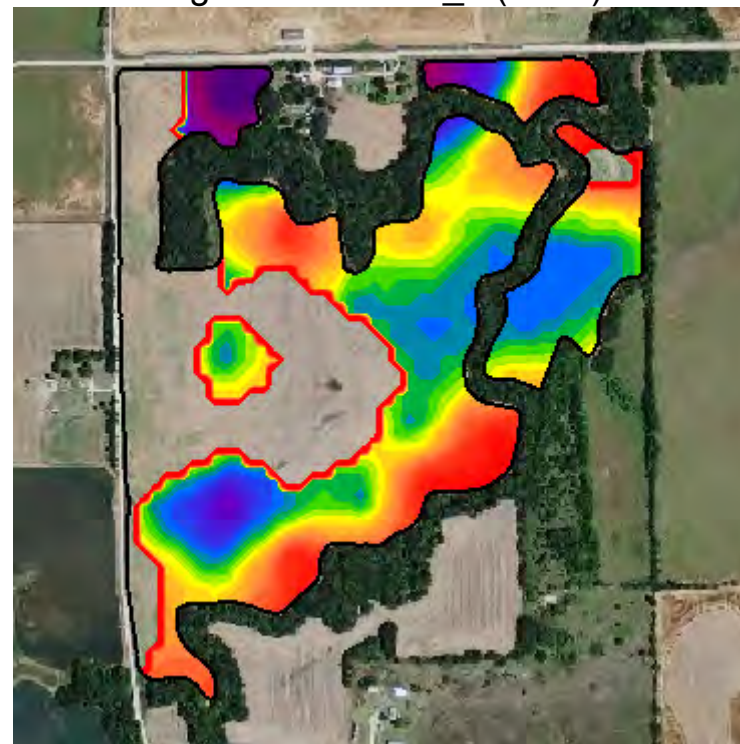
—	Field Boundary
Yellow	pH Surface
Yellow	Excessive Acid 0 - 5 pH (0.0 ac) (0.0%)
Orange	Acidic 5.1 - 5.5 pH (32.9 ac) (32.6%)
Light Orange	Slightly Acidic 5.5 - 6.1 pH (58.7 ac) (58.1%)
Pink	Grain Optimum 6.1 - 6.6 pH (9.4 ac) (9.3%)
Purple	Alfalfa Optimum 6.6 - 7.5 pH (0.0 ac) (0.0%)
Dark Purple	Alkaline > 7.5 pH (0.0 ac) (0.0%)

—	Field Boundary
Red	Lime Product Recommendation lb/ac
Red	5500 - 7300 (18.8 ac) (18.6%)
Orange	7400 - 9000 (43.6 ac) (43.1%)
Yellow	9100 - 11600 (35.0 ac) (34.6%)
Green	11800 - 14200 (1.8 ac) (1.8%)
Blue	14400 - 15700 (0.7 ac) (0.7%)
Purple	16100 - 16400 (0.2 ac) (0.2%)
Dark Purple	16500 - 16900 (0.6 ac) (0.6%)
Dark Blue	17100 - 17800 (0.3 ac) (0.3%)

pH Surface (2019)



Ag Lime 50 ECC_2 (2019)



Grower: Ritchie Tarn
Farm: Advantage Trust
Field: D Hoffman 34
Area: 101.08 ac

Event Date(s): 6/3/2019
Season: 2019
Min: 5.00
Avg: 5.68
Max: 6.48

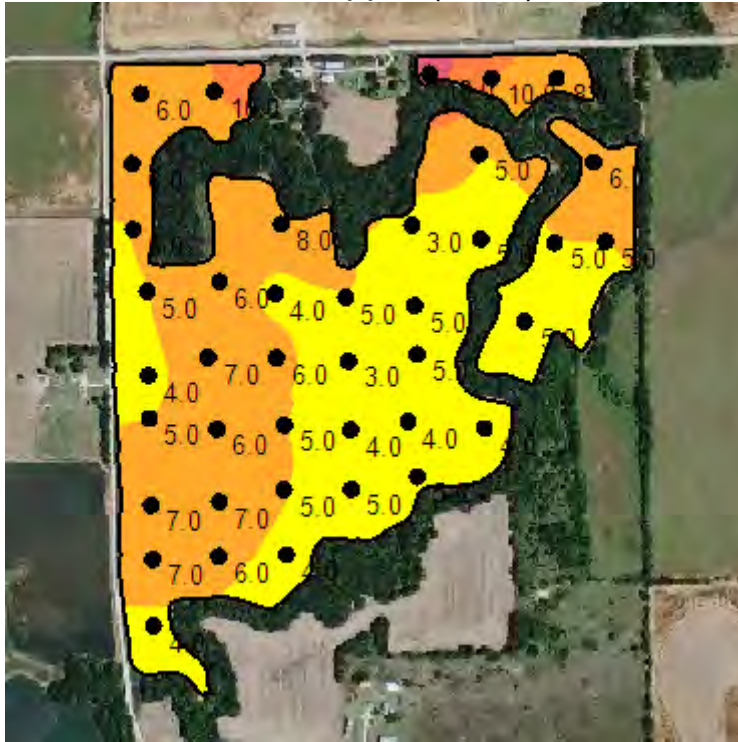
Season: 2019
Min Rate: 3,500.00 lb/ac
Avg Rate: 4,736.65 lb/ac
Max Rate: 8,400.00 lb/ac
Total Product: 322,267.20 lb
Applied Area: 68.04 ac
Product: Lime, Ag

Order Id: 766809
Order Task Id: 21216543
Crop - Year 1: Soybeans
Purpose - Year 1: Dry Grain
Target pH: 6.0
Incorporation Depth: 6
Task: KSU Recs - Lime Rec

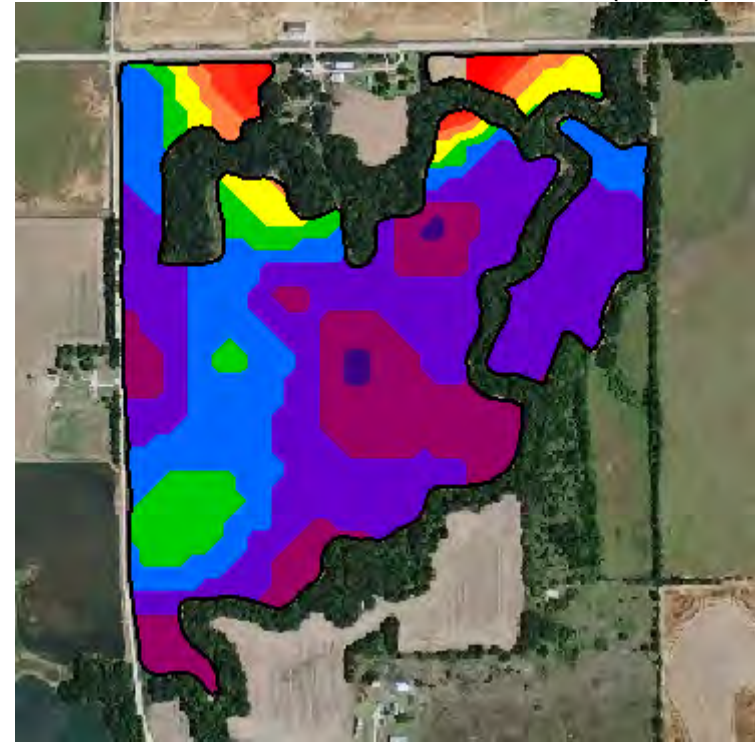
—	Field Boundary
Yellow	pH Surface
Yellow	Excessive Acid 0 - 5 pH (0.0 ac) (0.0%)
Orange	Acidic 5.1 - 5.5 pH (32.9 ac) (32.6%)
Light Orange	Slightly Acidic 5.5 - 6.1 pH (58.7 ac) (58.1%)
Pink	Grain Optimum 6.1 - 6.6 pH (9.4 ac) (9.3%)
Purple	Alfalfa Optimum 6.6 - 7.5 pH (0.0 ac) (0.0%)
Dark Purple	Alkaline > 7.5 pH (0.0 ac) (0.0%)

—	Field Boundary
	Lime Product Recommendation lb/ac
Red	3500 - 3900 (6.5 ac) (6.4%)
Orange	4000 - 4400 (13.8 ac) (13.7%)
Yellow	4500 - 4700 (15.6 ac) (15.4%)
Green	4800 - 4900 (12.6 ac) (12.4%)
Blue	5000 - 5200 (13.5 ac) (13.4%)
Purple	5300 - 6100 (2.9 ac) (2.9%)
Dark Purple	6200 - 7200 (1.7 ac) (1.7%)
Dark Blue	7300 - 8400 (1.4 ac) (1.4%)

Sulfur - ppm (2019)



Sulfur Product Recommendation (2019)



Grower: Ritchie Tarn
Farm: Advantage Trust
Field: D Hoffman 34
Area: 101.08 ac

Event Date(s): 6/3/2019
Season: 2019
Min: 3.18 ppm
Avg: 5.58 ppm
Max: 17.69 ppm

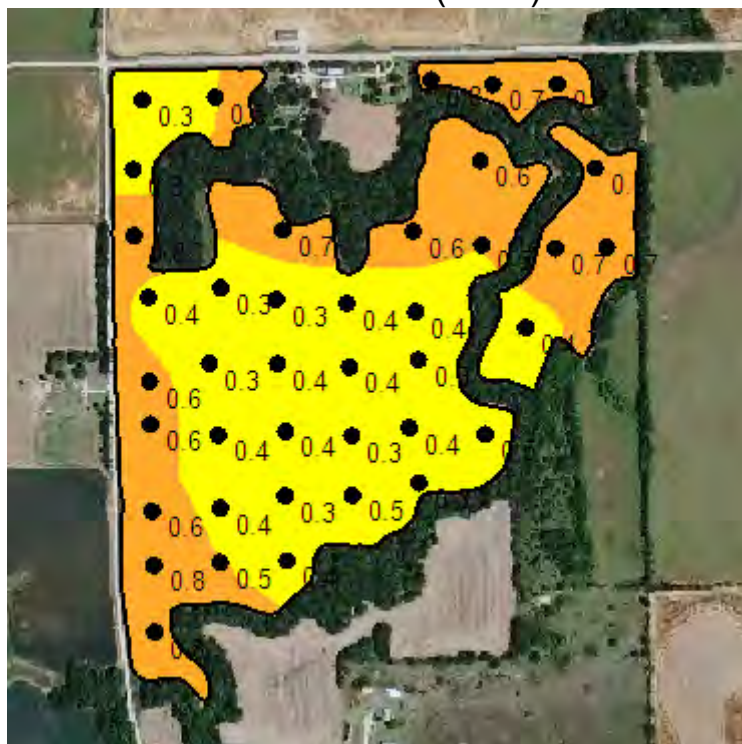
Season: 2019
Min Rate: 3.00 lb/ac
Avg Rate: 9.47 lb/ac
Max Rate: 12.00 lb/ac
Total Product: 951.29 lb
Applied Area: 100.50 ac
Product: Sulfur

Task: Midwest Labs - S Rec

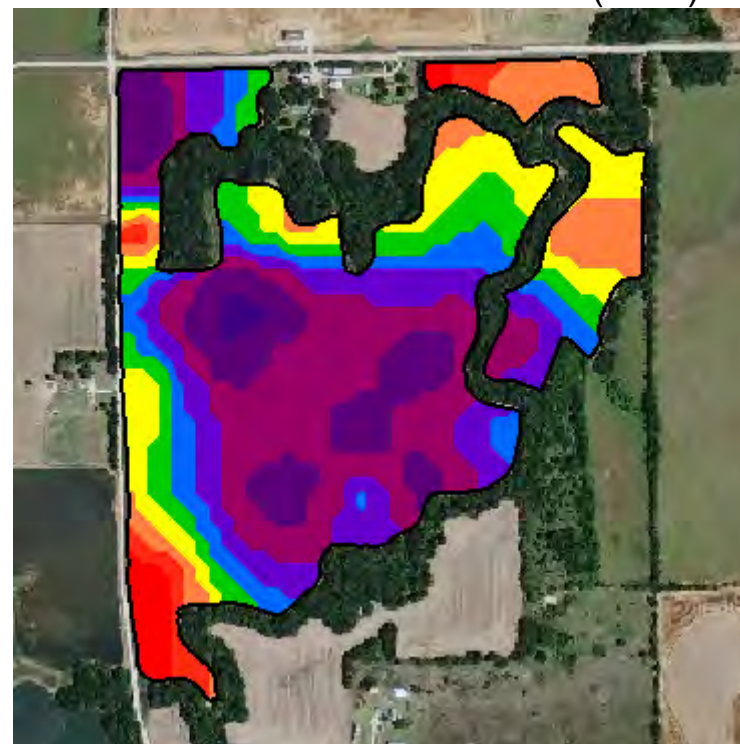
— Field Boundary
Sulfur Surface ppm
Very Low 0 - 5 ppm (49.6 ac) (49.1%)
Low 5 - 10 ppm (48.9 ac) (48.4%)
Medium 10 - 15 ppm (2.1 ac) (2.1%)
Optimum 15 - 20 ppm (0.5 ac) (0.5%)
High 20 - 25 ppm (0.0 ac) (0.0%)
Very High > 25 ppm (0.0 ac) (0.0%)

— Field Boundary
Sulfur Product Recommendation lb/ac
3 - 5 (2.8 ac) (2.8%)
6 (2.0 ac) (2.0%)
7 (4.0 ac) (3.9%)
8 (8.6 ac) (8.5%)
9 (21.4 ac) (21.2%)
10 (41.1 ac) (40.7%)
11 (19.8 ac) (19.6%)
12 (0.7 ac) (0.7%)

Zinc Surface (2019)



Zinc Product Recommendation (2019)



Grower: Ritchie Tarn
Farm: Advantage Trust
Field: D Hoffman 34
Area: 101.08 ac

Event Date(s): 6/3/2019
Season: 2019
Min: 0.29 ppm
Avg: 0.49 ppm
Max: 0.82 ppm

Season: 2019
Min Rate: 6.00 lb/ac
Avg Rate: 11.24 lb/ac
Max Rate: 15.00 lb/ac
Total Product: 1,136.12 lb
Applied Area: 101.08 ac
Product: Zinc Sulfate

Task: Main Recs - Zn Rec

—	Field Boundary
	Zinc Surface ppm
Yellow	Very Low 0 - 0.5 ppm (58.5 ac) (57.9%)
Orange	Low 0.5 - 1.0 ppm (42.5 ac) (42.1%)
Red	Medium 1.0 - 2.5 ppm (0.0 ac) (0.0%)
Pink	Optimum 2.5 - 4.0 ppm (0.0 ac) (0.0%)
Purple	High 4.0 - 6.0 ppm (0.0 ac) (0.0%)
Dark Purple	Very High > 6.0 ppm (0.0 ac) (0.0%)

—	Field Boundary
	Zinc Product Recommendation lb/ac
Red	6 - 7 (5.8 ac) (5.7%)
Orange	8 (8.9 ac) (8.8%)
Yellow	9 (12.0 ac) (11.8%)
Green	10 (10.0 ac) (9.9%)
Blue	11 (9.6 ac) (9.5%)
Purple	12 (14.8 ac) (14.6%)
Dark Purple	13 (25.0 ac) (24.7%)
Dark Purple	14 - 15 (15.1 ac) (14.9%)

Product Summary

Season: 2019
 Grower: Ritchie Tarn
 Farm: Advantage Trust
 Field: D Hoffman 34
 Area: 101.08 ac

K2O

Recommendation	Rec Acres	Avg Rec Rate	App Acres	Avg App Rate	Total Product
0-0-60	101.1	50.9 lb/ac	90.8	56.7 lb/ac	5,145.7 lb

Lime

Recommendation	Rec Acres	Avg Rec Rate	App Acres	Avg App Rate	Total Product
Lime, Ag	101.1	8,675.2 lb/ac	101.1	8,675.2 lb/ac	876,908.5 lb
Lime, Ag 766809 21216543 6/7/2019 3:41:48 PM(local) Soybeans Dry Grain 6.0 6	101.1	3,188.2 lb/ac	68.0	4,736.6 lb/ac	322,267.2 lb

P2O5

Recommendation	Rec Acres	Avg Rec Rate	App Acres	Avg App Rate	Total Product
11-52-0 MAP	101.1	67.4 lb/ac	93.3	73.0 lb/ac	6,811.7 lb

Sulfur

Recommendation	Rec Acres	Avg Rec Rate	App Acres	Avg App Rate	Total Product
Sulfur	101.1	9.4 lb/ac	100.5	9.5 lb/ac	951.3 lb

Zinc

Recommendation	Rec Acres	Avg Rec Rate	App Acres	Avg App Rate	Total Product
Zinc Sulfate	101.1	11.2 lb/ac	101.1	11.2 lb/ac	1,136.1 lb