



Spring Lane Primary School



Prospective Parents

Reception September 2026





Spring Lane Primary School



Who are we?

- Two form entry Primary School
- Urban location in Northampton
- Part of Campfire Education Trust
- Diverse community
 - 433 children
 - 89% children with a minority background (21 different ethnicities)
 - 63% children have English as an Additional language





Our Leadership Team



Mrs Brown
Assistant Head
Teaching and
Learning



Mrs Jones
Executive Head



Mrs Harper
Head of School



Mrs Patel
Lead SENDco

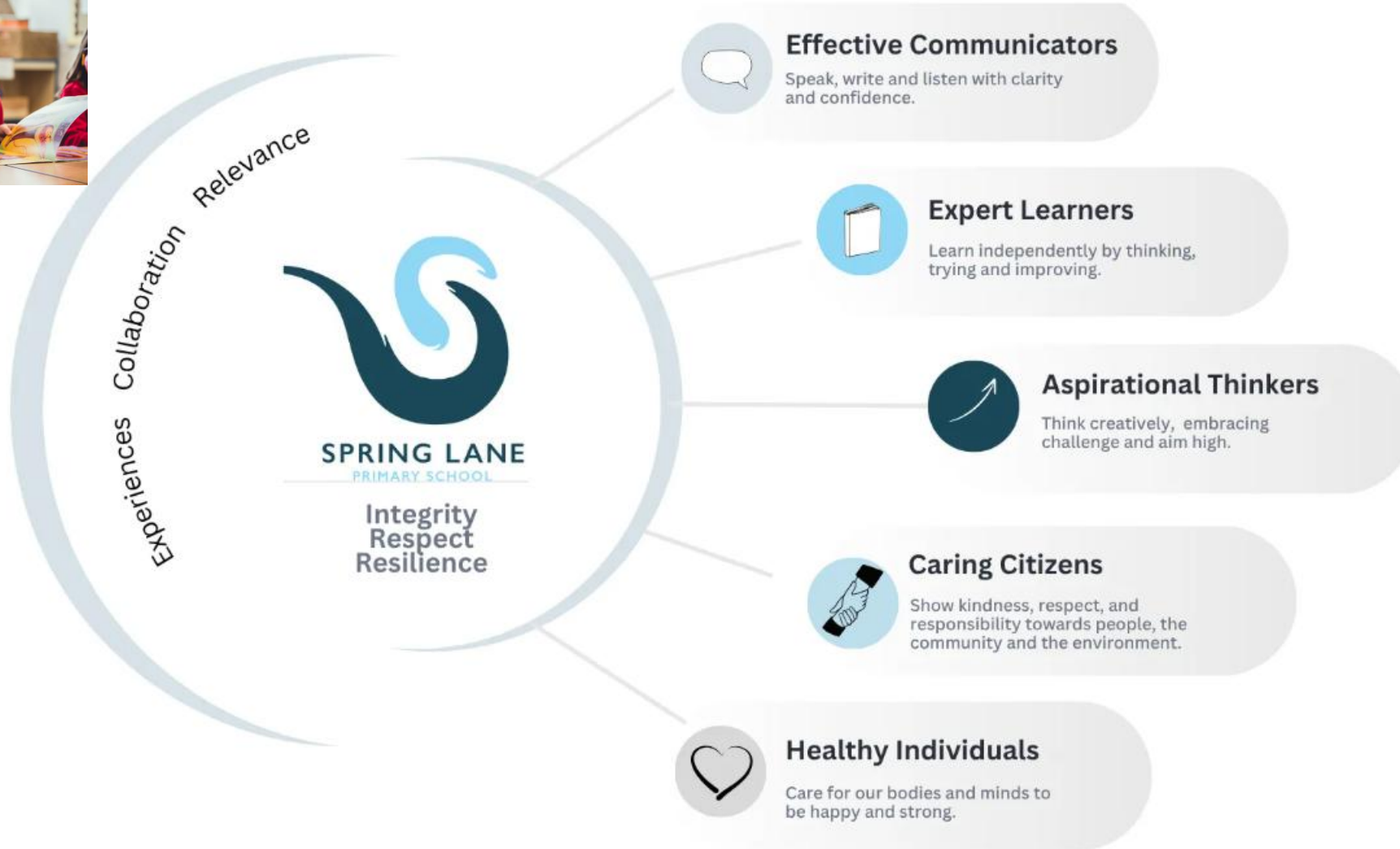


Mrs Stevens
DSL





Our Vision and Curriculum





Extra Curricular Activities



- After school clubs, e.g. Football, sewing, choir
- Free Breakfast Club 08:10 – 08:40
- Happy Hols Wraparound Care
- Trips, residentials and experiences, e.g. Bletchley Park, Zoo animals, Holdenby House, religious places of worship
- Tutoring groups
- OPAL Play





Inclusion - SEND



We are committed to creating a school community where every pupil is valued, respected, and supported to thrive. We celebrate diversity, promote equity, and champion inclusion, ensuring that all pupils regardless of background, ability, or circumstance, have equal opportunities to learn, grow, and succeed.

Our Approach

We follow the principles of the SEND Code of Practice (2015) and the West Northamptonshire Council Local Offer, ensuring all children with SEND are identified early, supported effectively, and included fully in all aspects of school life.

Identification and Support

- Early Identification
- Individual Support Plans
- Interventions
- Inclusive Teaching





Inclusion - Safeguarding



- At Spring Lane, keeping children safe is our absolute priority
- Every member of staff plays a vital role in ensuring that our children feel safe, secure, and cared for every day.
- We have a strong safeguarding culture across the school, supported by clear policies, regular staff training, and open communication with families.
- Our Designated Safeguarding Leads (DSLs) are always available to discuss any concerns.
- We work closely with children to help them understand how to stay safe, both in school and beyond — including online safety, personal safety, and emotional wellbeing.
- We believe that safeguarding is everyone's responsibility, and by working together with parents and carers, we ensure that every child can thrive in a safe and nurturing environment.





A typical day in Reception...



Start of the day: 08: 40

Registration

Phonics

Writing

Snack time

Free flow learning/ targeted work

Lunchtime

Maths

Free flow learning / targeted work

Storytime

End of the Day: 3.15





Partnership with Parents



- Open Mornings in Reception
- Stay and Play/Transition
- Tapestry
- Instagram
- Website Updates
- Christmas performances
- Class Assemblies
- Two Parent's Evenings
- Annual Reports
- Weekly Newsletters and other communication through Parentmail





Application Details



<https://www.westnorthants.gov.uk/school-admissions-and-appeals>

The closing date for applications for places in reception is **15 January 2026** at midnight.

There is a separate application process for children who have an Education, Health and Care (EHC) plan, details of which can be found on the [**SEND admissions page**](#).

National Offer Day: 16 April 2026

