



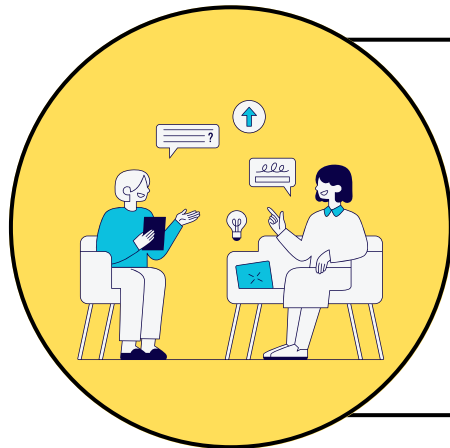
EDUCATIONAL/LEARNING ASSESSMENT INCLUDING FOR SPECIFIC LEARNING DISORDERS



An Educational Assessment (or Learning Disorder Assessment) is beneficial for a client who is having difficulties academically and/or finding education challenging. This can also identify any Specific Learning Disorders that may be present.

We use the Wechsler Adult Intelligence Scale (WAIS) which is designed for individuals aged 16 to 90 years old and the Wechsler Individual Achievement Test (WIAT), for individuals aged 4:0-50:11 years.

Payments are due at the time of booking. Report payments are due at the completion of the Interview stage.



01. INTERVIEW & TESTING - PAYMENT \$512.58

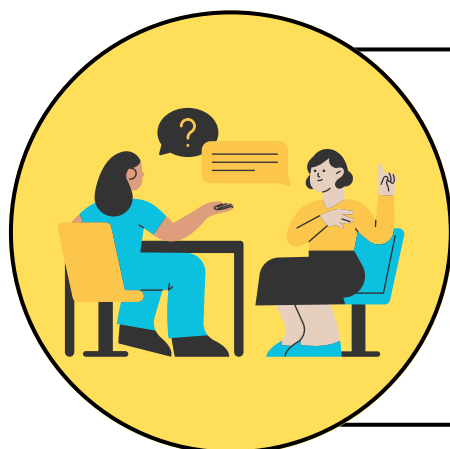
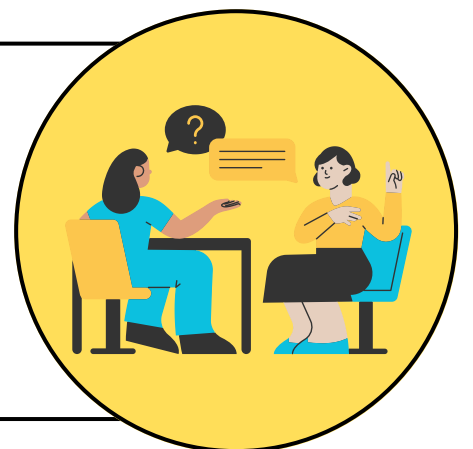
We will email tests to you and/or a Trusted Other Adult. This may be a spouse, sibling, adult child, parent, work colleague or someone similar.

In the Interview, we will meet with the client and/or a Trusted Adult to explore the academic background of the client.

02. ASSESSMENT INTERVIEW 1 - PAYMENT \$512.58

1 x up to 2 hours in person assessment - WAIS

This is where the therapist administers the WAIS test. During the assessment, the individual is asked to perform a series of tasks, such as solving puzzles, answering questions, and completing various other cognitive tasks.



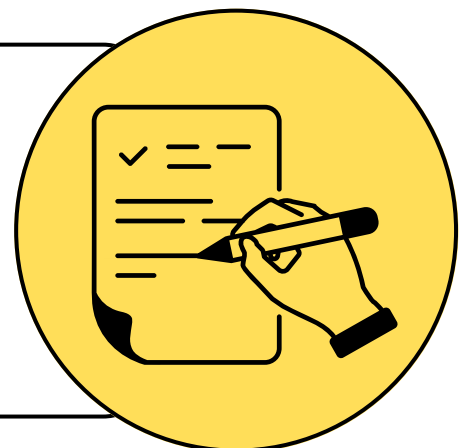
03. ASSESSMENT INTERVIEW 2 - PAYMENT \$512.58

1 x up to 3 hours in person assessment - WIAT

This is where the therapist administers the WIAT test. The WIAT can be used to identify learning disabilities, inform educational planning, and track progress over time.

04. REPORT WRITING - PAYMENT \$512.58

We will write a detailed report for you. We will use the results to assess your Full Scale Intelligence Quotient (FSIQ). The FSIQ, is a single score that represents an individual's overall cognitive ability. We will also diagnose any Specific Learning Disorders that arise.



05. ASSESSMENT HANDOVER - PAYMENT \$512.57

To explain the findings and any recommendations.
Following feedback, NDIS reports will be completed (if applicable).