



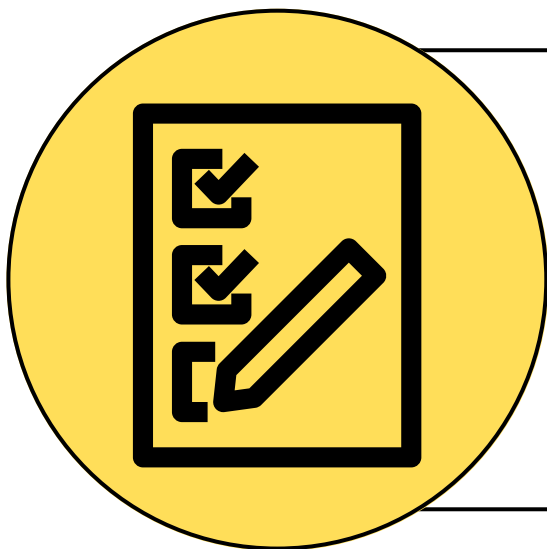
ADULT DIAGNOSTIC (AUTISM, ADHD) SINGLE DISCIPLINARY ASSESSMENT



This pathway is recommended if you have a PSYCHIATRIST or you are seeking diagnosis for MEDICATION.
You will need to share the report with a Psychiatrist for NDIS & Centrelink.

ADHD medication: please note you do not need an assessment from a psychologist for ADHD in order to receive medication. In most cases, it is easier and more cost effective to go straight to a psychiatrist. Psychiatrists will need to do their own due diligence due to prescribing schedule 8 medications and some may not accept my report. Every psychiatrist has a different process.

Payments are due at the time of booking. Report payments are due at the completion of the Interview stage.



01. PREDIAGNOSTIC TESTING - FEE \$232.99

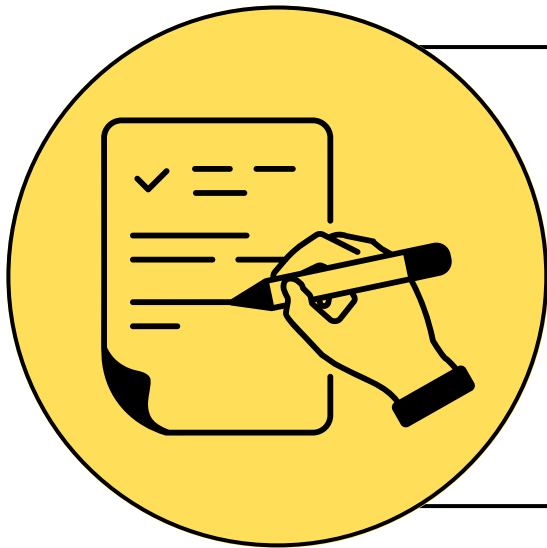
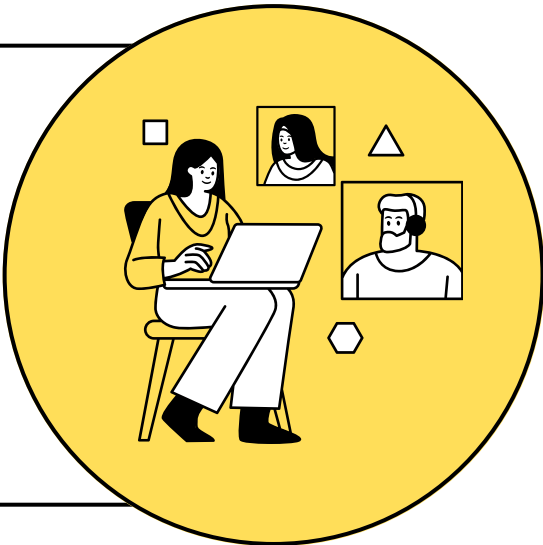
We will email tests to you and to a Trusted Other Adult. This may be a spouse, sibling, adult child, work colleague or someone similar.

Review the info sheet for Prediagnostic Testing for further information. Deduct this from the total if you have already completed this.

02. ASSESSMENT INTERVIEW - PAYMENT \$510

1 x up to 3 hours telehealth session (can request in person but this may take longer to schedule).

This is a detailed assessment that will explore the developmental, social & medical background of the Client.



03. REPORT WRITING - PAYMENT \$510

We will write a detailed report for you to share with a PSYCHIATRIST. A Single Disciplinary assessment of Autism (and ADHD) is not accepted by the NDIS. If you are seeking this, please request a MULTIDISCIPLINARY assessment. This includes a Psychosocial Capacity Assessment for NDIS.

04. ASSESSMENT HANDOVER - PAYMENT \$494.44

To explain the findings and any recommendations.
Following feedback, NDIS reports will be completed.

Again, for NDIS & MEDICATION you will need a Psychiatrist.

