



PM-000260
24v4

KANGA LOADERS

BUILT TOUGH SINCE 1981



MULTI-TASK COMPACT SKID STEER LOADER

PT220 / PW220

SELF-LEVELLING BUCKET STANDARD FEATURE

Makes it impossible for the load to tip onto the operator or the machine.

IMPROVED SOFT-TOUCH CONTROLS

- Smooth to drive.
- Improved operator ergonomics.
- Improved safety, with safety cut-out switch if no operator is present.

PERFECTLY BALANCED

Superior design enables the loader to remain balanced either fully loaded, or with attachment removed.

LED HEADLIGHTS

Included as a standard accessory.

LONG-LIFE LINKAGE PINS

Greasable pins ensure extended cycle life of pins and bushes.

FULL FLOW AUXILIARY

Hydraulic power outlet.

QUICK-HITCH

Change attachments in a matter of seconds.

OPERATOR CAPSULE

Cushioned to maintain operator comfort and safety.

AVAILABLE IN BOTH WHEEL & TRACK WITH OVER 6" OF GROUND CLEARANCE

Choice of heavy duty tracks or wheels.

LARGE NON-SLIP OPERATOR PLATFORM

Wide stance for improved safety and fatigue reduction. Rubber mounted platform reduces vibrations for better comfort.

SAFE, USER-FRIENDLY OPERATION AND PEACE OF MIND

Since inventing the mini loader in 1981, Kanga has continued to lead the industry in **safety**, **innovation**, and **performance**. Kanga Loaders adheres to Occupational Health & Safety government guidelines, and operates under World's Best Practices.



OPERATOR CAPSULE

NEW - Padded rear protection and operator stability extension.



NARROW ACCESS

With an overall width of 770mm (wheeled) / 800mm (tracked), you can access the worksite through side gates and standard doorways.



QUICK HITCH

Specially designed for the 2 Series Loader.



SAFETY RELIEF VALVE

The lift circuit is set at 1500psi to protect the operator from overloading the machine, and is located on the machine's rear, for ease of access.



AMPLE GROUND CLEARANCE WHILE MAINTAINING A LOW CENTER OF GRAVITY

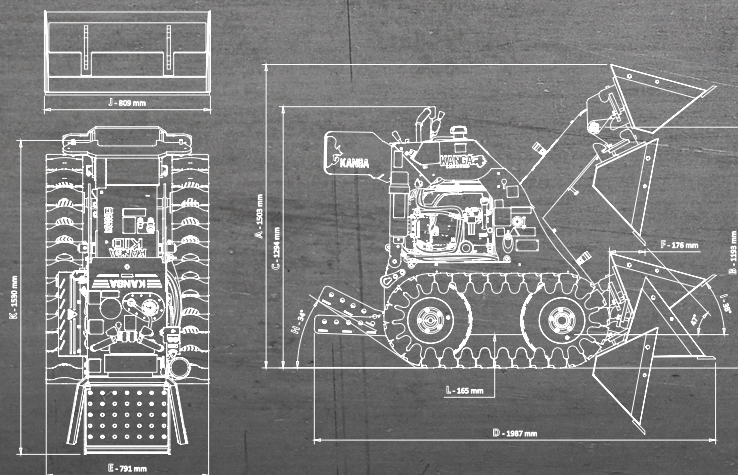
When the loader arms are lowered to rest on the frame, the bucket can be rolled back to carry a full load while maintaining ground clearance.



TRAVERSE OVER UNDULATING GROUND

Crawl over gutters and uneven terrain with confidence. Unlike other brands with fixed under-carriage track systems, Kanga's stable wrap-around tracked system will not pivot whilst traversing over undulating ground.

2 SERIES



The above graphics are intended for illustrative purposes only.

¹ Tipping load and Rated Operating Capacity (ROC) have been determined to ISO 14397-1 though the values shown here need to be adjusted for specific attachments. Refer to the section of the Operators Manual "Practice Safety at All Times" for Tipping Load and ROC values for the range of Kanga bucket and fork attachments. Note that ROC is 50% of the Tipping Load for wheel loaders and 45% for Kanga "over tire track" loaders.

² Machine Weight is calculated with no operator, using no bucket, full fuel tanks, and air-filled tires. Weight will differ depending on model and options.

³ Power Rating is the gross power of the production engine only as measured in accordance with SAE J1995 at 3600 RPM. Mass production engines vary from this value. Actual power output for the engine installed in the delivered machine may vary depending on numerous factors. These factors can include operation speed of the engine in the application, environmental conditions, and other variables.

⁴ Volumes based on ISO 7546:1983.

	TRACKS	WHEELS
PERFORMANCE	PT220	PW220
Tipping Load ¹ (No Bucket)	361kg	357kg
Rated Operating Capacity (AOC) ¹ No Bucket	162kg	178kg
Maximum Travel Speed (Fast Mode)	5.5kph	5.4kph
Fuel Capacity (Petrol)	11.6L	11.6L
Loader Mass ²	472kg	444kg
ENGINE		
Manufacturer	Honda GXV630 (Petrol)	Honda GXV630 (Petrol)
Rated Power ³	15.5kW @ 3600 RPM	15.5kW @ 3600 RPM
DRIVE SYSTEM		
Drive Control	Soft Touch Hand Levers - Rubber Mounted	Soft Touch Hand Levers - Rubber Mounted
Throttle Control	Hand Levers	Hand Levers
Wheels with Direct Drive Hydraulic Motor	Rear Wheels (x2)	Rear Wheels (x2)
Drive Tire Power Transfer	Front Track Drive	Front Chain Drive
HYDRAULICS		
Pump output	25.6L/min	25.6L/min
System Pressure	203 bar	203 bar
Hydraulic Reservoir Capacity	52.5L	51.5L
BUCKETS		
HD 4in1 Bucket Capacity (heaped / struck) ⁴	0.077m ³ / 0.059m ³	0.084m ³ / 0.059 m ³
DIMENSIONS		
A Max Operating Height	1503mm	1492mm
B Height to Hinge Pin	1193mm	1182mm
C Overall Height (No Warning Lights)	1294mm	1283mm
D Overall Length With 4in1 Bucket	1987mm	1987mm
E Overall Width	791mm	755mm
F Bucket Reach at 40° (4in1 Bucket)	176mm	187mm
H Angle of Departure	34°	34°
I Max Roll Back	38°	38°
J Bucket Width (4in1 Bucket)	809mm	809mm
K Overall Length Less Bucket	1530mm	1530mm
L Ground Clearance	165mm	154mm

SPECIFICATIONS

VAST SELECTION OF ATTACHMENTS SPECIFICALLY AVAILABLE FOR THE 2 SERIES

LAWN & GARDEN CARE

LAWN AERATOR | OK50405

Rejuvenates old tired lawns, and reduces compaction. The holes created by the aerator allow oxygen, water, and nutrients into the soil profile which stimulate better grass growth. 765mm (30") wide.



TURF CUTTER | OK50180

With only one moving part (front roller), the turf cutter is a low maintenance attachment which provides stability to set the required cutting depth, and effortless control for removing old turf, transplanting sod, and removing turf prior to trenching. Cutting width: 300mm (12").



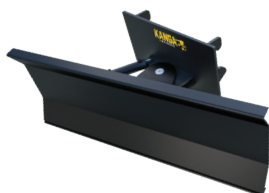
CARRYALL LEVELLER | OK50110

For transporting bulky items, paving tiles, cement bags, nursery plants, sod, turf and fence palings. Ideal for preparing top soil for sod or turf laying and levelling bedding sand for pavers. 900mm (35") wide.



HYDRAULIC ANGLE BLADE | OK85003

Backfill Blade ideal for backfilling trenches, pushing loose soil, feed lot clean-out. Fingertip hydraulic controlled side shift tilts blade from left to right. 1000mm (39") wide.



ROTARY TILLER | OK83701

Heavy duty tiller turns the toughest ground into beautiful garden beds. Perfect for sod and turf bed preparation. Cuts 120mm (4.5") deep, and 650mm (30") wide.



*DETAILED ATTACHMENT BROCHURE AVAILABLE

BRUSHES

BUCKET BROOM | OK50303

Clean up all manner of debris and leave your construction site clean. Self loading bucket, ideal for side walks, parking lots, factories, industrial sites and feed lots etc. Reverse rotation to push snow and gravel. Broom swings away automatically as bucket is emptied.



TRENCHERS

TRENCHER | OK42025

600mm (24") maximum depth, 100mm (4") width. Ideal for irrigation, garden lighting, drainage trenches.



MULTI-TOOLS

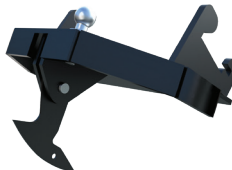
MULTITool BAR CARRIER | OK50063

The Multitool Bar Carrier features a 'quick attach' system that will have compatible Kanga tools in place in mere seconds. The Multitool Bar Carrier can be used with the Tow Hitch, and Forks.



RIPPER/HOOK | OK30403

Ideal for ripping hard ground before digging with a bucket, and can also be used as a lifting hook. A tow ball can also be attached to the frame for towing.



SPECIALIST TOOLS

VINYL STRIPPER | OK50220

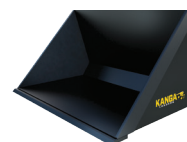
Quickest way to remove floor coverings - including vinyl, carpet, wooden floors, and even scraping the adhesive used.



BUCKETS

STANDARD BUCKET | OK11630

Open shape helps prevent sticky materials from clogging. Volume sized to rated load capacity cannot be exceeded when brim filled with heavy materials, wet sand or gravel. Ideal for everyday use, shifting sand and soil, clean up and backfill. Heaped volume: 0.077m³ / 2.72cu ft.



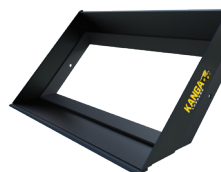
4 IN 1 BUCKET | OK60063

Enables front blading, back blading, plus all the advantages of a regular bucket. Open jaws to dump at full height. Use jaws for stump, post and tent peg pulling, lifting, placing rail road ties and rocks, broken tree limbs & broken concrete etc. Heaped volume: 0.084m³ / 2.97cu ft.



MULCH BUCKET EXTENSION | OK50135

Designed for handling bulky, light materials such as bark chips, mulch, and sawdust quickly and easily. With a straight cutting edge to scrape floors clean, the Kanga Loaders Mulch Bucket Extension retrofits to a Standard Bucket (OK11630).



RUBBLE BUCKET | OK50191

Ideal for preparing difficult rocky soil for sod and turf. For removal of unwanted rocks and sticks, leaving soil behind. Makes light work of the most difficult site conditions. A grapple attachment is also available.



GRAPPLE BUCKET | OK50189

Comes fitted with a hydraulically operated grapple attachment. With its front jaw, the grapple teeth can be used for holding onto material, or making the bucket more effective at managing tree limbs, straw, hay, and more.



POWER HEAD

POWER HEAD | OK30401

Driving head for augers with overall diameters between 100mm (4") - 450mm (18"), as well as mixer bowl. Comes with tow ball and ripper.



MIXER BOWL | KA-000008

Convert your Kanga into a mobile concrete mixer. No more hauling materials to the mixer or concrete to the job. Easily lift and place concrete over low walls or into post holes etc. Requires an Auger Power Head attachment (OK30401).



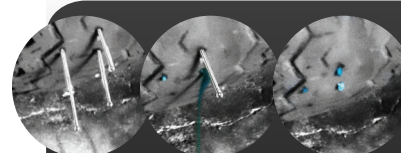
AUGERS

Available with Tungsten carbide tip pilots with Earth, Tungsten Carbide, or Multi-faceted Tungsten teeth, in single or double cutting head configurations. Choose from diameters between 100mm (4") and 450mm (18"). Tree augers also available with a root ball of up to 500mm (20").



AUGER EXTENSION | I-KIDEXT-300-K

Fits between the power head and auger, to increase digging depth.



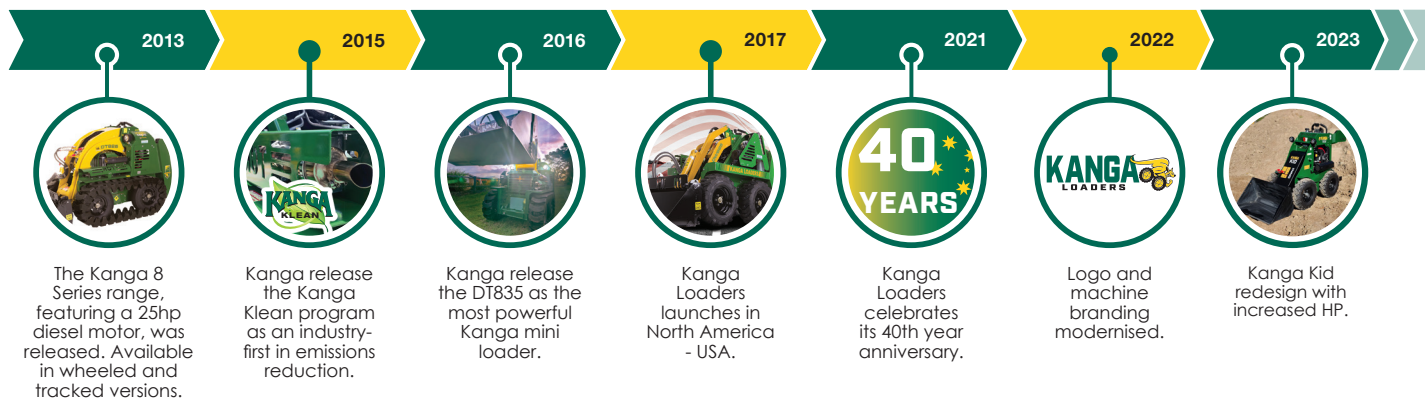
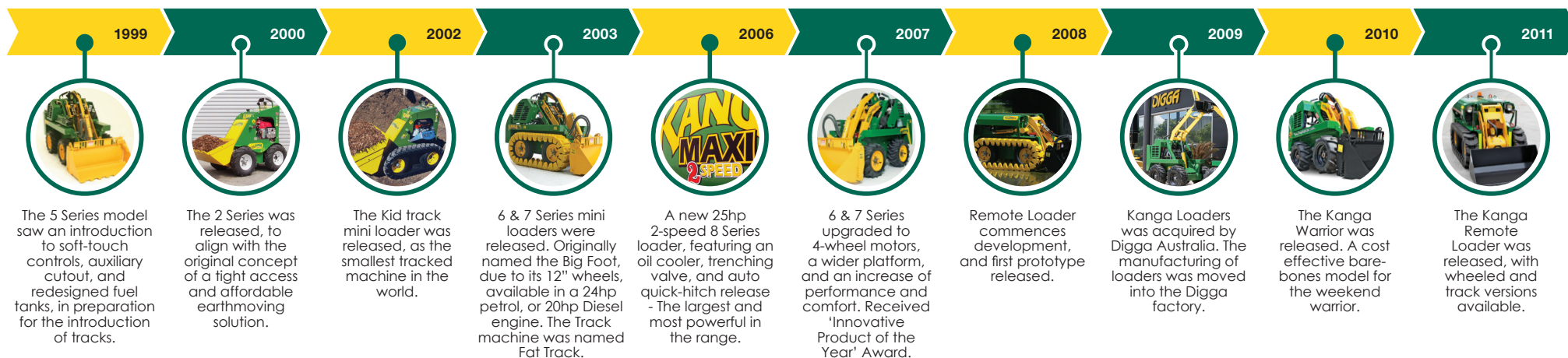
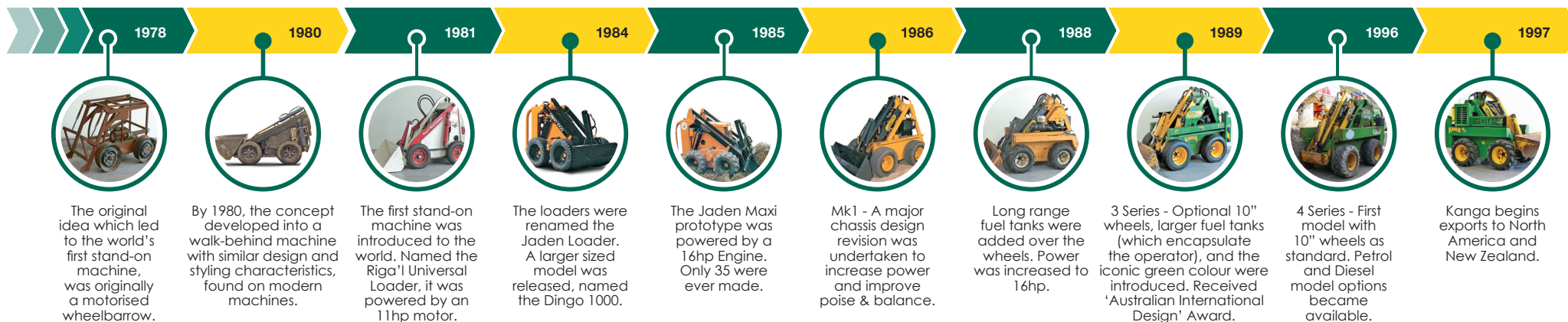
PUNCTURE-PROOF YOUR TYRES

ANTI-PUNCTURE TYRE RESEALING SYSTEM

Kanga Loaders offers a puncture-proof tyre system for your loader. The puncture-proof tyre system is a resealing substance that is pumped into the tyre through the valve stem, and remains liquid for the life of the mounted tyre. As the wheel rotates,

centrifugal forces spread the liquid evenly over the interior tyre lining. If the tyre is punctured, thousands of strong interlocking 'reseal' fibres clot in and around the puncture to prevent any loss of air, forming a seal. Available from your Dealer.

THE TOUGHEST JOBS SORTED, QUICKLY AND EASILY



KANGA LOADERS

MULTI-TASKING MADE EASY

Since being established in 1978 as Jaden Engineering, the Kanga loader has been a source of innovation for the multi-task compact skid steer market. Upholding the highest safety industry standards, starting with the original idea and prototype in 1980, Kanga later developed the first production model in 1981. Kanga Loaders has since become an Australian household name within the mini loader industry.

**GET THE
BEST FROM
YOUR
KANGA WITH
OPTIONAL
ADD-ONS...**

✓ SAFETY & CUSTOMISATION ADD-ONS

- ▶ Reverse Beeper.
- ▶ Horn - often required for OH&S purposes.
- ▶ Flashing Amber Beacon Light - often required for OH&S purposes.
- ▶ Emergency stop button - shuts down the machine functions in the event of an emergency.
- ▶ Back Protection Bars - an extension of the safety cell used to encapsulate the operator when operating in confined spaces, protecting the rear of the machine from unnecessary damage.
- ▶ Battery Isolator Switch - non-lockable isolator.

Colour Customise your machine to match the rest of your fleet, or corporate colours.

THE WORLD'S SMALLEST MINI LOADER

Fitted with a special range of Kanga attachments, you can complete the toughest jobs quickly and easily. With residential site access becoming increasingly smaller, the 2 Series is the popular choice among landscapers, pool installation, builders, contractors, plumbing, electrical contractors, and many more.

HONDA

- ✓ Fuel efficient operation
- ✓ High output performance
- ✓ Reliable

- ✓ Quiet
- ✓ Easy to start
- ✓ Easy to use & maintain



HONDA COMMERCIAL V-TWIN ENGINE

Honda is the world's largest engine manufacturer producing small engines since 1953. The GVX630 is a 4-stroke 2 cylinder engine with exceptional economy and cooling power. The 36 blade high capacity cooling fan coupled with race inspired connecting rods, integrated cylinder and head also aid in lowering vibrations and result in quieter operation.



KANGA

LOADERS


**TURNING HARD WORK
INTO EASY BUSINESS
SINCE 1981**

- ✓ AUSTRALIAN DESIGNED
- ✓ AUSTRALIAN OWNED
- ✓ AUSTRALIAN MADE

PHONE 1300 4 KANGA
EMAIL info@kangaloader.com

WARRANTY



ENGINE

3 YEARS/UNLIMITED
Petrol machines

COMMERCIAL PRODUCT

5 YEARS
Chassis structure.

2 YEARS/1,000 HOURS
Arm/tilt assembly workmanship and structure.

1 YEAR
Other components and electrical.
Warranty Conditions Apply.

kangaloader.com