



Keeping you in touch with BArts and the local Arts scene

## No. 19. January 2022

Edited by Lee Rayner: leerayner\_arts@hotmail.com 01992 465383



# Happy New Year!

## FORUM MANAGEMENT TEAM

**Chairman:** Malcolm Gordon, **Treasurer:** John Elson,

**Programming and Newsletter:** Lee Rayner

**Publicity:** Rita Hutchinson, **Committee Members:** Kathi Broad, Hilary Marsh,

**Borough of Broxbourne:** Cllr. Gordon Nicholson, Cllr. Steve Wortley, Steve Whitlam - plus representatives of BArts' affiliated groups.

**BARTS' SPONSORS:** Kathi Broad, Richard & Judy Lorimer, B3 Living, Mobile Stationery, Hertford



### Arts and Crafts Groups

BArts' Watercolour Painting  
 Broxbourne U3A  
 Cheshunt U3A  
 Hazelwood Art Group  
 Hoddesdon Camera Club  
 Hoddesdon Floral Art Society  
 Lea Valley Art Society  
 Lea Valley U3A  
 Lowewood Art Group  
 Mannamead Art Group  
 The Arts Society East Herts



### Educational and Cultural Groups

Broxbourne Adult Leisure Learning  
 Broxbourne U3A  
 Cheshunt U3A  
 Lea Valley Discussion Group  
 Lea Valley U3A  
 The Hoddesdon Society



### Theatre and Performing Arts Groups

Broxbourne Theatre Company  
 East Herts Operatic Society  
 Herts Showtime Dancers  
 Hoddesdon Players  
 Jason Theatre School  
 Mayhem Theatre Arts  
 Step 2 Step Dance Academy  
 The GO Hub  
 The Stoller School of Dancing  
 Doreen Turner Ballroom Dancing  
 The Vallé Academy



### Music Groups

A10 Orchestra  
 Broxbourne Chorus  
 Broxbourne U3A  
 Cheshunt U3A  
 Hoddesdon Music Club  
 Three Valleys Male Voice Choir



# Keeping the Arts Alive in Broxbourne!



# Not Many People Know This...

- The voluntary Arts sector is the main provider of arts activities and events in the Borough of Broxbourne.
- **BArts'** local theatre companies and performing arts schools are the only source of live drama and musical theatre, but their *choice* of productions is limited by licensing laws and copyright.
- **Broxbourne Theatre Company** originated in Enfield and was the provider of the Civic Hall pantomime for many years. The company manages **Bollescroft** next to the Spotlight.
- **EHOS** stands for East Herts Operatic Society and is more than 60 years old. *Three* of BArts' management team were long-term members! Originally, the group performed mainly operetta such as Gilbert and Sullivan, but today they present modern musicals and often appear at Harlow's Victoria Hall, as well as at the Spotlight.
- **Hoddesdon Players** are more than 100 years old.
- Without the **A10 orchestra and Hoddesdon Music Club**, there would be no classical music performances in the borough.
- Lowewood Museum is also home to **Lowewood Pottery Club**, who produce pottery in Lowewood's basement, which has a kiln. The museum will celebrate its 40th birthday this year.
- **Mayhem Theatre Arts** manages **The GO Hub**. The company celebrates its 15th birthday this month. Youngsters can now study the art of film-making at Mayhem
- **U3A** stands for the **University of the 3rd Age**. This is not an exclusive organisation for academics, but offers a huge range of leisure and learning opportunities for anyone no longer in full-time employment.
- **The three local branches of the U3A—Broxbourne, Cheshunt, and Lea Valley**—between them usually have around 2,000 members and offer more than 100 different subjects of interest, which range from Pub Lunches, Short Walks and Adult Ballet to Astronomy, French and Reading for Pleasure.
- If we were to add together the memberships of each BArts' affiliated group, the total would be more than 5,000 people!
- Nationally, **only about 20%** of the population participate in the arts, or attend arts events, so in the Borough of Broxbourne this *should* mean around 19,000 people!

## Become a BArts' Supporter! Spread the Word!

**Annual Subscriptions: Family Patrons (4 in family) £60,  
Joint Patrons £45 (2 in family), Individual Patrons £30,  
Friends £12, Groups £18, U3As £35,  
Arts Active Schools / Art Teachers £18.  
See application form on p 9**





# BArts' Plans for 2022



**Let's Do Lunch!** in the Dinant Room at The Spotlight  
12.00 noon, Tickets £15. including lunch and a glass of wine / fruit juice

**May 6th and 27th Debunking History** "History is the version of past events that people have decided to agree upon!" **Napoleon**

**June 10th Movers and Shakers** "Let him that would move the world, first move himself." **Socrates**

**July 15th Mind the Gap** "Each generation imagines itself to be more intelligent than the one that went before it, and wiser than the one that comes after it!"

**September 16th National Treasures** Britain's favourite places, priceless objects and lovable personalities!



**'My Kind Of Music'** Free Piano Concerts in the Café Bar at the Spotlight, 12.00 to 2.00 pm  
**Apr 6th, May 4th, Jun 1st, July 6th, Aug 3rd, Sep 7th**



NB Dates are *provisional*, pending essential repair of the piano chassis

**ARTS SOCIETY, EAST HERTS Jan 27th** The Magic of Prague

**B.ALL Jan 20th to March 31st** Scandal—some notable scandals and their repercussions

**BROXBOURNE U3A January 20th** The History of Easton Lodge

**CHESHUNT U3A January 27th** The Dog in My Medicine Cabinet

**EHOS April 24th - 30th** Musical Theatre Revue at Victoria Hall, Harlow

**THE GO HUB AT GOFF'S OAK January 16th** Re-opens for bookings

**HODDESDON CAMERA CLUB January 17th** Wild Beauty of Britain

**HODDESDON MUSIC CLUB January 22nd** Afternoon Family Concert

**HODDESDON PLAYERS April 7th –9th** The Life of Riley, a dark comedy by Alan Ayckbourn

**LEA VALLEY U3A January 10th** "The Art of Underground Travel"  
**February 14th** – "Great British Eccentrics", both at 2.00 pm at Stanboroughs.  
**March 14th** Return to the Spotlight

**MAYHEM THEATRE ARTS March 20th** Musical Theatre Production  
**July 10th** Dance Production

**STOLLER SCHOOL OF DANCING July 16th and 17th** Annual Production





# Good News For Mayhem and the GO Hub!

Re-opening for Bookings from January 16th

Broxbourne Council's plans to demolish and *replace* what was originally known as Goff's Oak Village Hall have been shelved for the time being and the venue has, at last, had vital repairs to the roof carried out, plus some re-decoration.

Under the management of **Mayhem Theatre Arts** over the last four years, the hall is an important community facility for Goff's Oak Village, particularly since the increase in the number of residents from new housing estates. With a small stage, two dressing rooms, a good size kitchen and an additional service area, it is ideal for a variety of events and already has a number of regular activities, including Badminton, Ballroom Dancing, Yoga and Tumble Tots.

**'Pay and Display' car park adjacent.**

## Hall Capacities

- Seated for Concerts/Theatre in rows **130**
- For Dinner layout—*no extra floor space* **100**
- For Parties/Dancing (*no table lay-out*) **130**

Website <https://www.gohub.center>

Telephone: **07747 824388**

E-Mail: [hello@thegohub.co.uk](mailto:hello@thegohub.co.uk)

**The rather dreary exterior doesn't do justice to the bright interior!**



## Wormley & Turnford Wormley Community Centre

is another borough-owned venue that is on a long-term lease to a community group – **Wormley and Turnford Big Local**, who have secured lottery funding to develop the facility into a multi-functional hub, providing a hall, 3 rooms, office and kitchen

- Seated for performances **150**
- Dinner layout **100**
- Dinner layout (tight fitting) **120**
- Standing **170**

### Licensed Bar

Wormley Community Centre, Fairfield Drive,  
Wormley, Herts, EN10 6DX.  
**01992 217077 / 07983 460790**  
[bookings@wtbiglocal.org.uk](mailto:bookings@wtbiglocal.org.uk)





# Update on Hertford Theatre's Plans

Scheduled for re-opening in Spring 2023, the theatre building will have a new, plaza-style foyer, an additional 142 seats in the auditorium with a new balcony level, a new studio theatre seating 150, two additional spaces to hire and a 3 screen cinema.



With funding from the Royal Opera House Bridge (the regional organisation that works with schools, arts and heritage organisations, libraries and councils across Essex, Hertfordshire, Bedfordshire and North Kent) Hertford Theatre will work with a consultant and associate artist to connect with primary, secondary and SEN schools; listening to and responding to the needs of teachers and their pupils. Preliminary surveys and one-to-one meetings have identified three key priorities for schools that will be addressed over the next three years.

- Impact of the Pandemic on Pupils' Mental Health and Wellbeing
- Lack of budget, time, status and provision for arts subjects in schools
- Lack of confidence in arts teaching

The plan is to develop networks and alliances of teachers, pupils and external organisations to raise funds and produce resources for cross-curricula programmes and projects that focus on the heritage and history of the five towns of East Herts and help to put live theatre at the heart of the community



## Hertford Theatre Christmas Production December 27th to January 3rd

At [Southern Maltings](#), Ware, SG12 7BS

*'A beautiful piece of entertainment, a multi-dimensional show...Imaginative, ingenious and visually stunning'*  
(UK Theatre Network)

**Online bookings only**

## Hertford Dramatic & Operatic Society Jack and the Ice Queen to January 3rd

The Studio Theatre , Bentley House. Tickets available from **Ticketsource**



Warning ! What follows may upset the easily offended and those who lack a corny sense of humour

# The Cynic's Carol

1. In the bleak midwinter,  
Everyone makes moan  
Everything has gone *wrong*  
*Normal* life has flown!  
Blows have fallen  
Blow on blow, blow on blow  
In the bleak midwinter  
No escape from woe

2. Pandemic statistics  
Doubling every day,  
Another NHS crisis  
Surely on its way?  
Shortages! Inflation!  
Then Christmas under threat...  
Politicians squabbling..  
How *much* worse can it get?

3. Conspiracies and scandals,  
The sound of sharpening knives,  
Jiggery-pokery and 'wokery'  
Are messing up our lives!  
The BBC is biased,  
Free speech is on the blink,  
Bankruptcy now more common  
How *much* lower can we sink?

4. Manufacturers of vaccines  
And masks *are* doing well.  
Injections earn a fat *fee*—  
Oh so *easily* they sell  
To chemists, or your GP,  
Protecting... peace of mind?  
But of rather *short* duration  
Increasingly we find!



5. 2022 is looming  
'Party' (oops!) season running out,  
Blundering BoJo's on his last chance,  
Traacherous colleagues casting doubt.  
Gloating media and Starmer,  
With his mediocre mob,  
Though he's certainly no *charmer*  
Think he'd do a *better* job!



6. What can *we* do about it  
Poor as we are?  
Oh, how we need some *wise* men,  
Or perhaps a guiding star!  
Can't put our faith in shepherds  
And few can *afford* the lamb —  
In the bleak midwinter,  
I fear we're in a jamb!

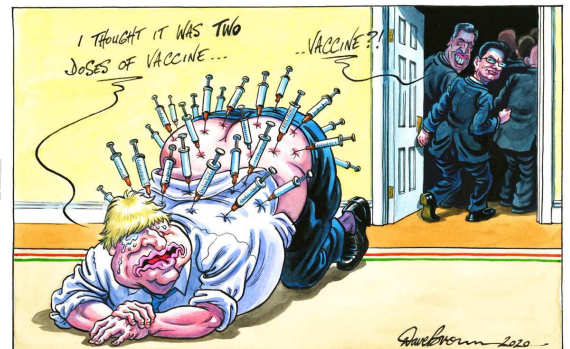


Ellar

HELLO  
I AM...  
**Woke**



Good news  
for Cartoonists.....  
....but not for the country!



Most of our 11 affiliated Arts and Crafts groups have managed to keep active during the last 21 months of the pandemic nightmare and some of their work has provided a welcome bright spot in BArts' Monthly Broadsheets. Elizabeth Lower, Secretary of the Lea Valley Art Society, contributes this update on her group...

"We now have 18 members, who renewed their membership since we reopened in September 2021. January 2022 will be interesting with its more intimate form. We will continue to meet every **Friday afternoon 2pm to 5pm** with a new programme of weekly & monthly themes & projects. Our monthly projects will be uploaded onto our website [leavalleyartsociety.co.uk](http://leavalleyartsociety.co.uk). We will also give out 2 different awards each year for themed projects. Golden Palette in the Spring and The Wilf Reid in October at our AGM.

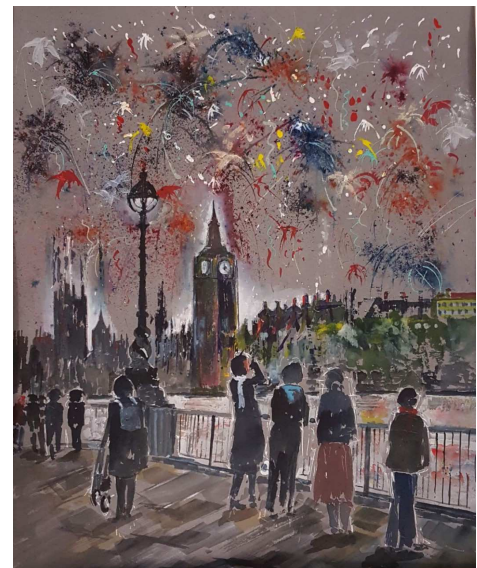
As always we welcome new members by encouraging anyone interested to pop by on a Friday afternoon to the **Wormley Scout Hut** for a trial afternoon, meet our friendly bunch and have a chat with a cup of tea and biscuit.

All health precautions are in place and all touch points sanitised; each member can have their own desks if required. Masks are encouraged and windows, or an external door, are left slightly open depending on weather."

## Some Recent Work



**Bonfire Night by Dick Watts**



**Fireworks by Maggie Gibbs**



**Winter Scene by Liz Lower**



**Icicles by Joan Facey**

## Hoddesdon Camera Club Image of the Year 2021



**1st Prize** Under the Conifer Tree  
Phil Janes



**Runner-Up** Ain't No Mountain High Enough  
Peter Fennell



**3rd Place** Vanishing Point  
Lyn Warwick



**4th Place** Slippy Road  
Ron Carter

The club meets on alternate Monday evenings at 8pm at The Parish Centre, Churchfields, Broxbourne, Herts, EN10 7AU.

The Annual Subscription is £35.00, but non members are also welcome at all meetings for a fee of £3.00.

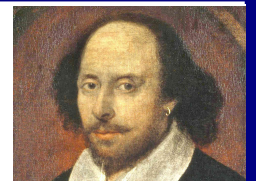
For further details, please email us at

[hoddcamclub@aol.com](mailto:hoddcamclub@aol.com)

**Spring Term 2022**  
1st meeting January 7th,  
depending on Covid regulations



**Broxbourne, Cheshunt and Lea Valley u3a**



### Shakespeare

*An informal group looking at Shakespeare's life and works within the setting of the C16th /C17th, the Tudor and Stuart monarchy and the development of theatre.*

*The current focus is on the 'history' plays*

### FRIDAY MEETINGS

**£2.50 per session, incl tea, coffee and biscuits**

Designated dates throughout the academic year

**11.00 am to 12.30 pm,**

Mayhem Theatre Arts, Brewery Road, Hoddesdon. 01992 465100

Bus stop adjacent.

3 hours free in Sainsbury's car park 2 mins walk

**Lee Rayner 01992 465383**  
[leerayner\\_arts@hotmail.com](mailto:leerayner_arts@hotmail.com)





**BARTS' MEMBERSHIP APPLICATION**  
**(For *new* members only)**

**Membership benefits include:-**

- Newsletters, Priority Booking on BArts' events. Discounts on some ticket prices.
- Members' subscriptions help to fund a wide range of the Arts in our Annual Arts Programme.

The Forum offers activities and events which are not usually provided by the Borough of Broxbourne's Leisure and Entertainments programme. It also represents the arts interests of individuals and member groups and negotiates with the Borough, so that the arts community may enjoy greater recognition and leisure facilities on a par with the provision for sports.

**Annual Subscriptions: Family Patrons (4 in family) £60,**

**Joint Patrons £45 (2 in family), Individual Patrons £30,**

**Friends £12, Groups £18, U3As £35, Arts Active Schools / Art Teachers £18.**

.....

**PLEASE FILL IN DETAILS AND RETURN THIS FORM WITH YOUR SUBSCRIPTION TO:-**

**Malcolm Gordon, 4 Warners Avenue, Hoddesdon, Herts. EN11 8LR**

I/We would like to become Family Patrons / Joint Patrons / Individual Patron / Friend of BArts / Group Member / Arts Active School / Arts Teacher

NAME.....

ADDRESS.....

.....

.....

TELEPHONE.....

E-MAIL.....

**NB This is confirmation that I / We are willing / not willing to be contacted by BArts with information regarding the organisation.**

Cheque enclosed for.....

**Made payable to Broxbourne Arts Forum, please.**