


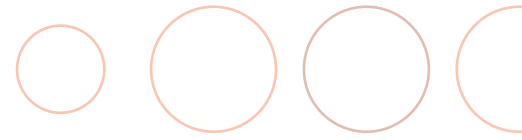


+27 12 993 4481   
info@craftflooring.co.za   
www.craftflooring.co.za 

# SPECIALIZED FLOORING & WALL COATINGS

Quality solutions for the  
industrial and commercial  
market — tailored to suit your  
sector's requirements.





## WHO WE ARE



An aesthetically pleasing floor that is easy to clean and maintain is a plus for any business, but in an industrial facility where maintaining a safe, hygienic and efficient operating environment is essential, delivering a durable floor is imperative.

Statistics have shown that many industrial floor coverings fail within the first two years of service and it has also been found that flooring represents the second highest area of litigation in the construction industry. Altogether this means that selecting a services provider capable of delivering a fit-for-purpose,

durable floor finish is a crucial choice for all facility managers.

As the approved importer and accredited installer of our various flooring solutions, be it resin flooring, tiles, polished concrete or joint installations, the buck stops with us.

As the sole installer of our products our clients will never be drawn into disputes resulting from the split responsibilities inherent in traditional manufacturer/installer relationships.



HYGIENIC



DURABLE



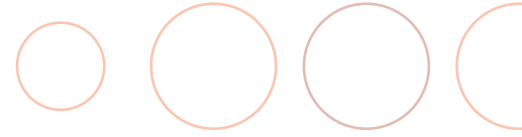
LONG LASTING



NON-SLIP







## MMA RESIN FLOORING SYSTEMS

### PLASTIFLOOR



Plastifloor is a fast-curing, tough and durable modified methyl methacrylate (M-MMA) flooring solution that provides a hygienic, easy-to-clean and slip-resistant floor. From light to heavy industrial applications Plastifloor is suited to a wide spectrum of industries and is available in a variety of colours and slip-resistant finishes.

- Plastifloor achieves a full chemical cure in only two hours.
- Plastifloor can be applied on a variety of surfaces, including tiles.
- With a palette of 200 colours as well as a variety of slip-resistance options, the finish can be tailored to the client's particular requirements.
- The seamless, impervious, slip-resistant surface offers ease of cleaning and maintenance.
- Plastifloor is well-suited to a wide range of industries from industrial facilities, to food and beverage processing, bottling plants, pharmaceutical and retail facilities.

## INDUSTRIAL TILES

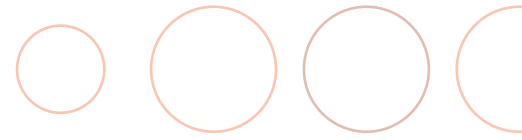
### KAGETEC SOUTH AFRICA



Kagetec is a complete system that relies on the sum of its component parts and installation methods to deliver flooring systems well-suited to the food, beverage, and pharmaceutical industries.

Kagetec delivers floors that are corrosion, abrasion, and chemical resistant making them the premier choice when it comes to equipping industrial facilities and production plants. Related products available from Ketagtec include waterproof membranes, stainless steel drainage systems and wall protection barriers.

- Fully vitrified ceramic clinker floor tiles are exceptionally resilient, offering high mechanical, thermal and chemical resistance.
- Hexagonal tiles are ideal for use in areas subject to high concentrations of wet, high thermal, chemical and mechanical loads.
- Ketagtec South Africa is the only locally based installer of Argelith tiles in sub-Saharan Africa.



## INDUSTRIAL POLISHED CONCRETE

### BECOSAN



Becosan is a non-film-forming polished concrete floor treatment that enhances the strength of the concrete and protects the surface. In contrast with traditional chemical-based treatments, Becosan densifiers and sealers contain water-based lithium impregnators that penetrate the capillary structure of the floor and chemically bond the particles, resulting in a hardwearing floor that will not delaminate.

- Becosan floors come with a 10-year dust free warrantee.
- All Becosan materials are HACCP and CE Certified.
- Becosan floors are hardwearing and will not delaminate, flake or chip.
- Becosan polished concrete surfaces are low-maintenance, durable and easy to clean.
- Becosan can be installed without interfering with production.
- Becosan offers a variety of aggregate aesthetics ranging from a cream finish to salt and pepper or full aggregate exposure and three different finishes defined as Matt-Plus, Semi-Gloss and High-Gloss.

## POLYURETHANE COATINGS

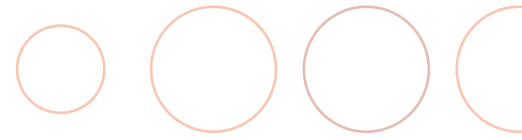
### UCRETE



Ucrete polyurethane resin products imbue floors with exceptional resistance to aggressive chemicals and extreme mechanical and thermal shocks, resulting in a long-term durable flooring solution. The Ucrete flooring range includes the UD 200, MF, HF and DP systems.

- Ucrete coatings are fast-curing, hygienic and non-tainting.
- Ucrete coatings have anti-static and slip resistant properties.
- Polyurethane is HACCP certified as a 'food safe' flooring product.
- Craft Flooring is an accredited Super Installer/Distributor of Ucrete products.

Key industries include, food and drinks processing, dairy, pharmaceutical and personal care, chemical and related industries, electronics, engineering, and transportation.



## CONTEMPORARY SURFACES

### IDEAL WORK

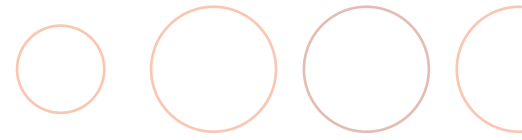


Craft Flooring's new line of environmentally-friendly microcement products is aimed at the modern-day designer. These minimalistic, unique and elegant finishes can be overlayed on ceramic tiles and concrete, bringing a whole new world of opportunities for commercial and office refurbishments. With the wide variety of colours, tones and textures we can bring any design to life. These products are LEED accredited (soon to be Green Tag Accredited) and come with a warranty of up to three years.

- MICROTOPPING®
- NUVOLATO ARCHITOP®
- CONCRETE OPTIK
- ACID STAIN
- PUROMETALLO
- RASICO®
- LIXIO® & LIXIO® +







## SUPPLEMENTARY SERVICES



As part of our value proposition, Craft Flooring performs the following repairs and maintenance without disrupting your business operations –

### → FULL DEPTH SLAB & SCREED REPAIRS

With minimal interruption to your business/production schedule we are able to replace falls and replace or rehabilitate damaged slabs.

### → HI-TECH SYSTEMS

We can create additional joints or rehabilitate/reconstruct existing joints. Using a moisture insensitive polyurea elastomer with a 2-component joint filler that contains 100% solids the cured product has a shore hardness value ranging from ASTM D-2240 65-67 to 85-87A. The resin pigment can be colour matched to the floor and hard and soft joints are available.

### → THRESHOLD REPAIR

We can repair any damage resulting from reach trucks and forklifts and even full depth repairs (200-300mm) can be completed at sub-zero temperatures and coated after six to eight hours.

### → HACCP QUALITY COVES

Using our rapid-curing resins we can create polymer coves to ISO22000/HACCP audit standards, i.e. (</=350mm) at 65-67°R.

### → DRAINS

In addition to repairing or replacing existing drains we are also able to rehabilitate and correct falls to drains using our unique technical mortar and coatings.

### → DEEPEX

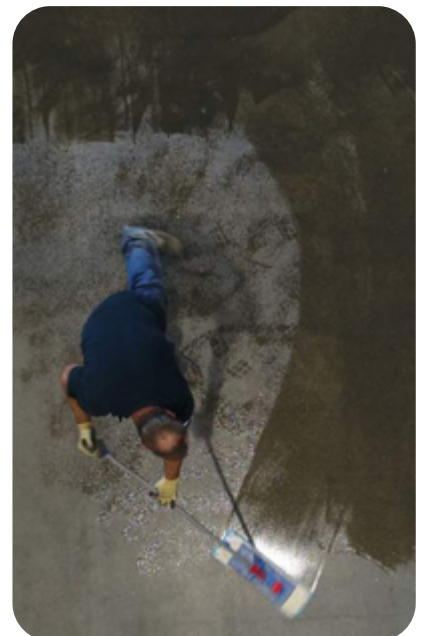
DeepEx is a professional cleaning and maintenance system for industrial floors. Choose from our range of high-quality diamond impregnated cleaning brushes and polishing pads. We have everything you need to keep your polished concrete and resin floor looking its very best.



▲ Installation of a Hi-Tech Joint



▲ An example of our drain systems



▲ Application of Becosan Densifier