



Iso Analytics, Inc.

6135 NW 167 Street
Suite E 15
Miami Lakes, FL 33015
(754) 736-6431

testing@isoanalytics.org



ISO ANALYTICS

Analysis Report

Client Mellow Fellow

Batch # MF-E0302

Test Reg State Florida

Batch Date 9/13/2021

Production Facility DelCann Edibles

Extracted from Hemp

Production Date 9/13/2021

Sample Name THCO Diamonds
Strawberry Cough

Order Date 9/13/2021

Sample Type Inhalable

Date Received 9/14/2021

Sample ID IA-47502

Lab Batch Date 9/14/2021

Net Weight (g) 2.2

Date Completed 9/15/2021

Potency Summary

| | |
|----------------------------|---------------------------------|
| Total THCO 891.2 | Total THC 0.000 |
| Total Delta 9 0.000 | Total Delta 10 None Detected |
| Total CBG None Detected | Total CBD 880.200 |
| Total CBN None Detected | Total Cannabinoids 1771.400 |



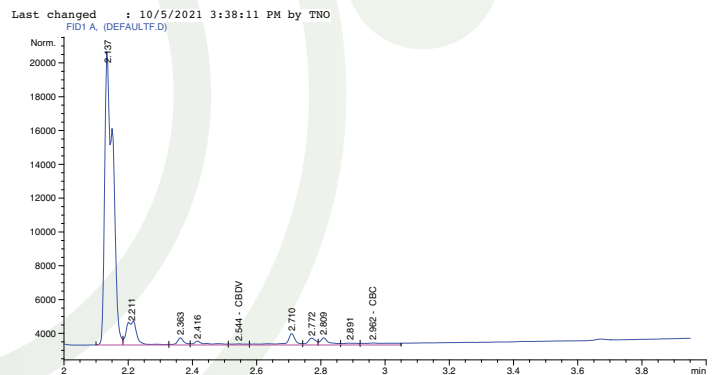
Product Image

Cannabinoid Profile Tested by GC/FID

Potency 12 Test

| Analyte | LOD % | LOQ % | Result (mg/g) | Result (%) |
|---------|-------|-------|---------------|------------|
| Δ8-THCO | 0.000 | 0.001 | 891.2 | 89.12 |
| Δ9-THC | 0.000 | 0.001 | 0.000 | <LOQ |
| Δ10-THC | 0.000 | 0.001 | 0.000 | <LOQ |
| CBC | 0.000 | 0.001 | 0.000 | <LOQ |
| CBD | 0.000 | 0.001 | 880.200 | 88.02 |
| THCV | 0.000 | 0.001 | 0.000 | <LOQ |
| THCA-A | 0.000 | 0.001 | 0.000 | <LOQ |
| CBN | 0.000 | 0.001 | 0.000 | <LOQ |
| CBGA | 0.000 | 0.001 | 0.000 | <LOQ |
| CBG | 0.000 | 0.001 | 0.000 | <LOQ |
| CBDV | 0.000 | 0.001 | 0.000 | <LOQ |
| CBDA | 0.000 | 0.001 | 0.000 | <LOQ |

Chromatogram



ND = Not Detected; NT = Not Tested; LOD = Limit of Detection;
LOQ = Limit of Quantitation; RL = Reporting Limit; Δ = Delta;
Total Δ9-THC = Δ9-THCA * 0.877 + Δ9-THC; Total CBD = CBDA * 0.877 + CBD

ISO ANALYTICS, INC.

This sample has been tested by Iso Analytics, Inc. using valid testing methodologies and a quality system. Values reported relate only to the sample tested. Iso Analytics, Inc. makes no claims as to the efficacy, safety or other risks associated with any detected or non-detected levels of any compounds reported herein. This Report shall not be reproduced except in full, without the written approval of Iso Analytics, Inc.

Charles Lewis, PhD
Chief Scientist
Iso Analytics, Inc.