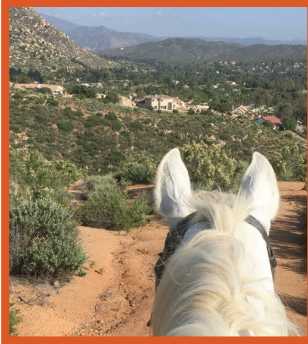


WELCOME

San Diego Country Estates offers two self-care facilities for equestrian enthusiasts — the International Equestrian Center (IEC) and the Casey Tibbs Western Center (CTWC). Both centers are well maintained and staffed, and are located with access to miles of beautiful horse trails throughout San Diego Country Estates.

The Casey Tibbs Western Center (CTWC) features



a large show arena, perfect for all equestrian disciplines. Barrels and poles are available for use.

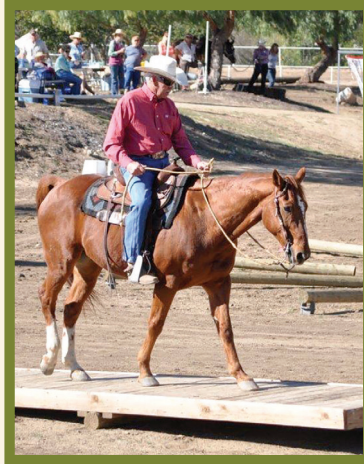


HORSE SHOWS and EVENTS

There are shows and events for multiple disciplines hosted throughout the year at both facilities. All events are open to the public, in

The IEC features amenities that allow for multiple training disciplines including dressage, stadium jumping, cross-country, reining and trail trials, along with a half-mile conditioning track.

Both facilities offer a wide variety of round pens and arenas that feature excellent footing, access to trails, scenic picnic areas, and of course, beautiful Ramona weather.



addition to SDCEA members. Please call or email to receive calendars and show information.

RIDING in the Estates

To help provide a fun and safe ride, please follow these steps:

- 1) **Call prior to arrival or trailering into either facility.**
Horse trailer parking is only allowed in designated areas at both facilities.
- 2) **ALL RIDERS** — both SDCEA members and non-SDCEA guests or visitors — must sign a “Release of Liability” form annually.

All non-SDCEA members and non-boarders must pay a **day-use fee** prior to using either facility. This fee is charged for both ride-in and trailer-in users, including all guests of SDCEA members and trainers. Payments may be placed in either facility’s drop box or slot location.
IEC: Forms are available outside of the equestrian office at the Rotunda. Forms and payments may be left in the door slot to the office or given to management.
CTWC: Forms are available at the announcer’s booth, where they can be placed in the drop box along with payments.

Current rates and facility rules are located at both of these locations, as well.
- 3) Monthly, quarterly and annual riding passes may be purchased from management. Call for current prices.
- 4) Be respectful of all other riders and clean up after yourself and your horse(s).

SDCEA Horse Trail Map

Trails span 14.6 miles throughout the Association. Access the map online at: <https://www.sdcea.net/equestrian>.

Casey Tibbs Western Center

25240 Pappas Road, Ramona, CA 92065

International Equestrian Center & Rotunda

16911 Gunn Stage Road, Ramona, CA 92065

Equestrian Office at the Rotunda

Hours: Monday – Friday 8 am to 4 pm

To Reach Staff Outside of Office Hours:

Equestrian Centers Manager 760-315-9154 cell

After 4 pm: Member-Guest Services .. 760-789-8290 x4000

or SDCEA Patrol 760-315-3815

www.sdcea.net/equestrian

Email: equestrian@sdcea.net

Call the office with any questions you may have!

760-789-3407

SDCEA Equestrian

SAN DIEGO
Country Estates
ASSOCIATION

TWO SDCEA EQUESTRIAN CENTERS



MAPS • AMENITIES • RIDING

Explore our beautiful SDCEA Homeowner-Owned
Equestrian Facilities and Extensive Trail System

SAN DIEGO
Country Estates
ASSOCIATION

INTERNATIONAL
EQUESTRIAN
CENTER



The International Equestrian Center is open daily from 6 am to 10 pm.

Arenas 5-13 have lights, which automatically turn off at 10 pm.

ADDITIONAL AMENITIES

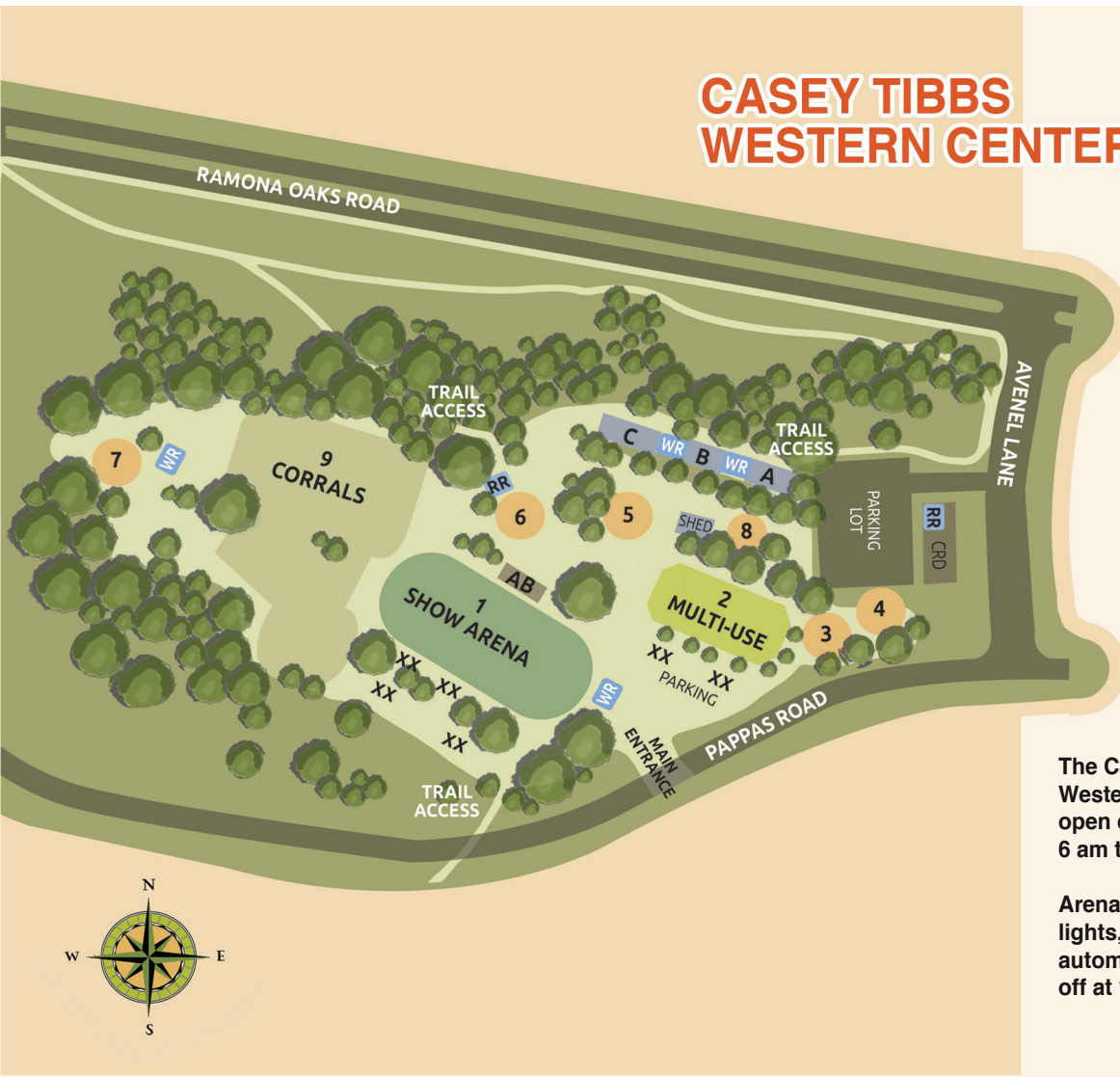
- 38 Outdoor Corrals with Shade Covers, Automatic Waterers
- Outdoor Tack Rooms
- Hot/Cold Indoor Barn Wash Racks, and Outdoor Wash Racks
- Announcer's Booths and PA Systems Available

- MM** Mare Motel
- RR** Restrooms 4 Porta-Potty Locations/ 1 Restroom
- WR** Wash Racks 7 Locations
- XX** Horse Trailer Day Parking

IEC AMENITY KEY and USES

- | | | |
|--|--|---|
| 1 Stadium Jumping Arena – 290' x 143' Riding | 7 Green Round Pen Turnout/Riding/Lungeing | 12 90' Round Pen Riding/Lungeing/ Turnout |
| 2 Dressage 2-South Riding | 8 Upper Arena 300' x 150' – Riding | 13 50' Round Pen Riding/Lungeing |
| 3 Dressage 3-North Riding | 9 Turn Out – 163' x 95' Turnouts have priority/ Riding/Lungeing | 14 Trail Challenge Course Riding/Lungeing |
| 4 Infield Round Pen 60' – Riding/Lungeing/ No Turnout | 10 Mare Motel Round Pen – 65' Turnouts have priority/ Riding/Lungeing | 15 Cross Country Course Riding/Lungeing |
| 5 Bull Pen Turnout/Riding/Lungeing | 11 120' Round Pen Riding/Lungeing/ No Turnout | A-H Rental Barns each with 9 Stalls and Tack Rooms |
| 6 Hot Walker Stay with your horse | | |

CASEY TIBBS
WESTERN CENTER



The Casey Tibbs Western Center is open daily from 6 am to 10 pm.

Arenas 1-7 have lights, which automatically turn off at 10 pm.

CTWC AMENITY KEY and USES

- | | | |
|---|---|---|
| 1 Show Arena 300' x 150' – Riding Only | 7 Back Round Pen Riding/Turnout/ Lungeing | AB Announcer's Booth |
| 2 Multi-Use Arena 180' x 80' – Turnouts/ Riding/Lungeing | 8 Tractor Yard Area | RR Restroom(s) 1 Porta-Potty and 1 Restroom Located at CRD |
| 3 Round Pen Turnout/Riding/Lungeing | 9 Corrals | WR Wash Racks Four Locations |
| 4 Mini Challenge Course Riding/Lungeing | A Commercial Barn 8 Stalls/In N Out/ Exclusive Turnout/ Office | XX Horse Trailer Day Parking |
| 5 Hot Walker Stay with your horse | B-C Rental Barns each with 9 Stalls and Tack Rooms | |
| 6 Green Round Pen Riding/Turnout/Lungeing | | |

ADDITIONAL AMENITIES

- Hot/Cold Barn Wash Racks
- 60 Outdoor Corrals – 24' x 24'
- Outdoor Wash Rack
- Outdoor Tack Rooms
- Announcer's Booth and PA System Available