



F1
CURTAIN
COMPANY

Wholesale
Price List

May 2026

INTRODUCTION 01

About Us, F1 Values, Why choose F1?,
Communication, How to Order, Worksheet
Template, Custom Fabric Labels, Job
scheduling & Turnaround time

DRAPERY 03

ROMAN BLINDS

Wooden Batten 04
Chain Headrail 05
Components, including Child Safety 06
Motorised Headrails 07

LININGS 09

CUSHION COVERS 10

TIEBACKS 11

BEDDING & SQUABS 12

SPECIFICATIONS

Headings 13

Tapes, Hems, Hooks, Returns &
Allowances 15

Match from top, Offcuts, Packaging
& Shipping, Invoicing Notes,
Disclaimers 16

ABOUT US

Founded in 2023, F1 Curtain Company brings extensive experience in soft furnishings manufacturing, fabrics, and design. With a skilled team and a commitment to quality, we continue to make our mark in the industry.

F1 VALUES

We are exceptional people
 We are partnership focused
 We think big
 We embrace change
 We work with passion and pride

WHY CHOOSE F1?

F1 Curtain Company was founded with a vision to take full control over quality, standards, pricing, lead times, and the type of work we undertake. Passionate about our craft, we approach each project with a commitment to delivering the best possible results.

Our success is driven by a team of experts with decades of experience handling high-end, delicate fabrics. Their deep industry knowledge allows them to identify and navigate fabric flaws, ensuring exceptional craftsmanship in every project. Alongside our skilled team, strong supplier relationships enable us to consistently deliver outstanding results.

To support our clients, we offer dedicated measuring and installation services within Christchurch through our Projects Team, ensuring a seamless process from concept to completion. Our Customer Service Team is readily available via email, phone, or in person at our workroom to assist with any queries before they impact production.

We continually invest in our business, from new equipment and premises to the development of a live access portal, allowing clients to track the status of their jobs with greater accuracy and transparency.

At F1 Curtain Company, we take pride in working with clients who recognise and appreciate quality craftsmanship and exceptional service.

The F1 Management Team

Your formula to success & sew much more

COMMUNICATION

orders@f1curtains.co.nz	New orders or variations to existing orders
customerservice@f1curtains.co.nz	Workroom updates or workroom enquiries
info@f1curtains.co.nz	General enquiries
accounts@f1curtains.co.nz	Invoices or account enquiries
03 595 6600	Opt 1 to speak with Customer Services and Orders
Main phone line	Opt 2 to speak with the Workroom Supervisor
	Opt 3 to speak with the Workroom Manager
03 595 6601 022 397 1956	F1 Project Quotations/ Commercial/ Residential
projects@f1curtains.co.nz	

HOW TO ORDER

1. Send Worksheets to: orders@f1curtains.co.nz
2. Arrange for fabric to go to: F1 Curtain Company, 23 Leeds Street, Phillipstown, Christchurch 8011.
3. Fabric and worksheet processed at workroom, fabric checked and soft furnishings manufactured.
4. A live list link containing all your jobs will be emailed out to you, showing their status in the production cycle. This can be checked at any stage.
5. If you require an additional service for F1 to arrange installation of your job, please liaise with the F1 Projects team.



Need help with your project?
F1 Projects are here to help: Quoting, Measuring, Calculating & Installation

WORKSHEET TEMPLATE

If you would like to use our worksheet templates, please let us know at info@f1curtains.co.nz, you can send us your company logo and we can add this to your own templates to use.

- All measurements on worksheets to be shown in millimetres only. Handwritten worksheets will not be accepted.

CUSTOM FABRIC LABELS

If you would like have custom labels added to your drapery or roman blinds, please let us know at info@f1curtains.co.nz, you can send us your company logo and we can add this to your own templates to use. There will be a one off set up fee of \$40. There is a character limit of 50.

JOB SCHEDULING & TURNAROUND TIME

- A **due date** is assigned once both the **fabric and worksheet** are received, based on workroom capacity. Any changes to standard turnaround times will be communicated, and the **live portal link** will display the due date. Drapes will be completed by the end of that day and, if possible, dispatched or made available for collection the next day.
 - Jobs will be live in your portal link within 2 days of receipt of worksheet.
- If a **job needs to be scheduled before fabric arrival**, a **10% fee** of the overall job will apply due to the additional admin required for tracking and follow-ups. For **urgent queue-jumping requests**, approval is at the discretion of the workroom and will incur a **20% surcharge**.
 - If fabric and the worksheet are not received **15 working days** before the due date, a reminder will be sent. If they are still missing **10 working days** before the due date, the job will be removed from the schedule and reassigned **10 working days after fabric arrival**.
- Worksheets can be separated to allow for **part jobs** to proceed in the case of fabric delays for example. This is dependant on workroom capacity.

**DRAPERY
PRICING**

	PANEL (DROP)		CONTINUOUS (M)	
	UNLINED	LINED	UNLINED	LINED
Gathered/ Pencil Pleat 75mm <i>*includes gathering</i>	33.50	37.70	23.50	26.00
Single Pleat Inverted Pleat Double/ Dutch Pleat <i>Includes Madison & America Pleat 100mm wide buckram</i>	41.90	46.10	30.20	32.70
Triple/ French Pleat New York Pleat F1 Wave <i>100mm wide buckram</i>	45.10	49.30	32.70	35.20
S-Fold <i>75mm wide tape</i>	46.10	50.30	33.50	36.10
Detachable Linings <i>Fullness 60% provide existing curtain specs</i>	30.40		26.20	
Small Eyelet <i>7mm, recommend adding neaten joins for drops</i>	29.30		21.00	
Large Eyelet <i>40mm colours stocked Satin Nickel and Matte Black, other colours on request only</i>	75.00	85.00	60.00	68.00

Fabric over 150cm wide will be 2x PANEL amount

EXTRAS Any extras need to be specified on the worksheet

Add cord weight <i>includes cord weight</i>	\$15 per drop/ metre
Add false top or bottom	\$20 per drop/ metre
Add interlining <i>does not include interlining material cost</i>	\$12 per panel or \$10 per metre
Angled curtains <i>only gathered and puddled, unlined only</i>	Plus 100% Lined POA
Attaching detachable lining to supplied curtains	\$5 per drop/ metre
Bagged sides - <i>self lined (same fabric) bagged on edge, lined 20mm in from edge</i>	\$18 per side
Bandings/ borders/ trims <i>client to supply this a labour cost only</i>	\$20 per metre of banding etc
Double PREM 150mm tape	Plus 20%
French Seam	\$15 per seam
Headings over 100mm	\$3 per drop/ per metre
Labour per hour <i>alterations</i>	\$75
Lining to top	\$10 per drop/ metre
Match from top - <i>all curtains matched from bottom unless specified otherwise</i>	\$22 per drop/ metre
Mozart/ Bocelli/ Multi 100 tape	Plus 10%
MP40 tape (gathered tape)	Same as grid price
Neaten joins (overlocked & sewn down)	\$12 per seam
Neaten joins (sewn down)	\$20 per seam
Over standard length (over 3.5m) 3.6m up to 4m	\$5 per drop/ metre
Over 4m up to 7m	Unlined +100% Lined +200%
Pleat to stripe - <i>all striped fabric will be pleat to stripe automatically</i>	Plus 20%
Slot heading/ Rod Pocket	Same as gathered grid price
Transparent buckram	\$4 per drop/ metre
Velvet handling <i>note pile direction, sides seams un-sewn</i>	Plus 30%
Wave (F1)/ New York Pleat tape in same fabric	\$15 per drop/ metre

**ROMAN BLINDS - LINED OR UNLINED
WOODEN BATTEN/ CUSTOMER SUPPLIED HEADRAIL
PRICING**

WIDTH MM

	1000	1250	1500	1750	2000	2250	2500	2750	3000	
DROP MM	1000	230	254	278	302	326	350	374	411	448
	1250	245	269	293	317	341	365	389	426	463
	1500	259	283	307	331	355	379	403	440	477
	1750	274	298	322	346	370	394	418	455	492
	2000	297	321	345	369	403	437	471	508	545
	2250	318	342	366	390	424	458	492	529	566
	2500	333	357	381	405	439	473	507	544	581
	2750	365	391	417	443	480	517	554	591	628
	3000	397	423	449	475	512	549	586	623	660

NOTES

Price above includes wooden batten headrail or use of Customer supplied headrail

Please be aware that silicone lining can only be bonded if the coated side faces the window.

Unlined Romans: Please discuss the fabric with F1 before finalising, unlined roman can only be made in tucked style.

Roman blind folds approx 200mm unless stated otherwise

Please specify the style of roman on the worksheet: if unspecified, default style is Bonded & Layered

Bonded	grid price
Tucked	plus 20% to grid price
Sewn	plus 40% to grid price

EXTRAS

Angled Top/ Banding/ Attaching trim / over 3m finished length or width	POA
Butting Blinds	Plus 20% to grid price
Interlining - labour only excludes material cost	Plus 20% to grid price
Pattern matching - stripes/ patterns embroidery - needing joins	Plus 20% to grid price
Sheer fabric or Lace	POA
Spines to front	Plus 40% to grid price
Steel chain for headrail	14 each
Velcro headrail	Must supply your own
Velvet fabric - note pile direction <i>only bonded style</i>	Plus 30% to grid price
<i>if blind size is over 2m wide velvet is not recommended due to puckering</i>	
London Blind, Relaxed roman, Roman with frill	POA
Difficult/ unstable fabrics may require extra time, F1 will discuss surcharges prior to action	

Please refer to the **ROMAN BLIND COMPONENTS** page 06 for a complete list, including **child safety products**



Any extras need to be specified on the worksheet

**ROMAN BLINDS - LINED OR UNLINED
CHAIN HEADRAIL F1 WORKROOM SUPPLIED
PRICING**

WIDTH MM

	1000	1250	1500	1750	2000	2250	2500	2750	3000	
D R O P M M	1000	320	359	398	438	474	509	548	598	649
	1250	335	374	413	453	489	524	563	613	664
	1500	349	388	427	467	503	538	577	627	678
	1750	364	403	442	482	518	553	592	642	693
	2000	387	426	465	505	551	596	645	695	746
	2250	408	447	486	526	572	617	666	716	767
	2500	423	462	501	541	587	632	681	731	782
	2750	455	496	537	579	628	676	728	778	829
	3000	487	528	569	611	660	708	760	810	861

NOTES

Price above includes wooden batten headrail or use of Customer supplied headrail

Please be aware that silicone lining can only be bonded if the coated side faces the window.

Unlined Romans: Please discuss the fabric with F1 before finalising, unlined roman can only be made in tucked style.

Roman blind folds approx 200mm unless stated otherwise

Please specify the style of roman on the worksheet: if unspecified, default style is Bonded & Layered

Bonded	grid price
Tucked	plus 20% to grid price
Sewn	plus 40% to grid price

EXTRAS

Angled Top/ Banding/ Attaching trim / over 3m finished length or width	POA
Butting Blinds	Plus 20% to grid price
Interlining - labour only excludes material cost	Plus 20% to grid price
Pattern matching - stripes/ patterns embroidery - needing joins	Plus 20% to grid price
Sheer fabric or Lace	POA
Spines to front	Plus 40% to grid price
Steel chain for headrail	14 each
Velcro headrail	Must supply your own
Velvet fabric - note pile direction <i>only bonded style</i>	Plus 30% to grid price
<i>if blind size is over 2m wide velvet is not recommended due to puckering</i>	
London Blind, Relaxed roman, Roman with frill	POA
Difficult/ unstable fabrics may require extra time, F1 will discuss surcharges prior to action	

Please refer to the **ROMAN BLIND COMPONENTS** page 06 for a complete list, including **child safety products**



Any extras need to be specified on the worksheet

ROMAN BLINDS - COMPONENTS & OPTIONS

- **Acorn Options:** White plastic, Rimu & Metal colour Stain
- **Batten Headrail:** 24x24 square timber
- **Bottom Rail:** 25mm Aluminium Flat Bar
- **Chain colour & lengths:**
 - White Plastic 750mm, 1000mm, 1250mm, 1500mm, 1750mm, 2000mm
 - Ivory Plastic 750mm, 1000mm, 1250mm, 1500mm, 1750mm, 2000mm
 - Beige Plastic 750mm, 1250mm
 - Grey Plastic 750mm, 1000mm, 1250mm, 1500mm, 1750mm
 - Clear Plastic 750mm, 1000mm, 1250mm, 1500mm, 1750mm
 - Black Plastic 750mm, 1000mm, 1250mm, 1500mm
 - Steel - any length, however see EXTRAS for cost.
- **Cleat Hook Options:** White or Aluminium
- **Components provided:** L brackets for mounting Batten Headrail, screws and cleat
- **Ends of Batten/ Headrail:** Covered in fabric for ALL Outside fit blinds, left uncovered for Inside Fit
- **Eyelet system used on ALL Roman Blinds**
- **Fibreglass rods used as spines**

CHILD SAFETY PRODUCTS

If required, F1 can provide separate pricing, as the quantity of each safety product varies based on the blind's size.



Cord breakaway white
\$1.10 each
*for uplifting cords UV protected
Will detach with 1.6kg of force*



Cord breakaway clear
\$1.50 each
*for uplifting cords
Will detach with 2.8kg of force*



Breakaway Clutch
\$30 each
*for Revolution headrails
Chain will detach with 6kg of force*



Chain tensioner clear
\$1.20 each
Wall mounted chain tensioner



Child Safe Toggle
\$1 each
Will detach with 6kg of force



Child Safety Box
\$2.60 each
*White, Ivory, Beige, Black and Grey
Wall mounted chain tensioner*

MOTORISED HEADRAILS MARTEC MOTORISED L-ION SERIES

HEADRAIL/ BLIND WIDTH	PRICE EX GST
Up to 1000mm	\$520.87
1250mm	\$539.13
1500mm	\$566.09
1750mm	\$584.35
2000mm	\$604.35
2250mm	\$626.09
2500mm	\$643.48
2750mm	\$665.22
3000mm	\$683.48

Above pricing is for complete Headrail Set. This is to be added onto roman blind grid pricing.

Includes Headrail, Motor, Battery, Cord Drums and Brackets (top fix or face fix).

Price does not include Remote Control, Charger or Bridge Connector WiFi Hub.

Remote Controls are 15 channel (you can control up to fifteen individual motors off a single remote).

Remote Controls - \$73.91 each

Battery Charger's - \$43.48 each

Solar Charger - \$139.13 each

Direct Power Supply - \$52.17 (Plugs into standard 3-point plug. No battery needed)

Battery Extension Cord - 1.22m - \$6.09

Battery Extension Cord - 2.44m - \$10.43

Please provide the following information with all orders:

1. Blind Width (we make deductions to allow approx. 3mm blind overlap each end after covered batten end caps are fitted)
2. Number of Remote Controls and Chargers needed
3. Number of cords per Headrail (All 3.5m drop) - F1 will work this out.
Black cords available - no extra charge
4. Top Fix or Face Fix brackets
5. Inside or Outside fit
6. Any other special instructions or requests

This motor is intended for domestic use only, and may not be suitable for large commercial blinds

For more information continue on page 08

MOTORISED HEADRAILS INFORMATION SHEET

Motorised Roman Blind - Info sheet.

DV24AF/S-0.8/34

Fits inside our patented **Revolution Roman Blind Batten Headrail** and uses our standard Revolution Clip Brackets.

Clean and Tidy – **no controller chains or cords!**

Battery Powered (Rechargeable lithium battery).

No wiring needed.

More than 200 open + close movements (approx. 8 months of daily use) between charges.*

Quickly and easily recharged.

Solar Charging available.

Adjustable speed (Pre-set to fastest speed).

Cell Phone operation (when used with the Bridge Connector (WiFi) + Connector app).

Can be integrated with **Amazon Alexa** and **Google Assistant**.

15 Channel bi-directional Remote Control (Control up to 15 roman and/or curtain motors (total) individually or in unison).

Electronic Limits are **quickly and easily adjusted**.

Status Feedback

Preferred Stop Position.

Technical info...

Rated Torque (Nm): 0.8

Radio Frequency: 433 MHz

Rated Current: 0.48

Rated Power: 10w

Degree Of Protection: IP20

Maximum Turn Limit: ∞

Working Temp: -10°C - +50°C

Maximum load is 3kg – 5kg**

2 year warranty on electronics. 5 year warranty on headrail hardware and components

* Depending on weight of fabric and size of blind .

** Depending on blind width and drop length (This motor is intended for domestic use only, and may not be suitable for large commercial blinds).

LININGS

Why choose F1 Linings?

- Convenient for you
- Competitively priced
- No freight charge to pay
- No time wasted waiting for delivery to arrive
- No delays with production time
- Variety of products, widths and colours
- Do not pay for flaws

CHARLES PARSONS

NAME	COLOUR(S)	WIDTH	PRICE PER METRE
Enviroguard	Silver, Ivory, Shell, Putty, Sterling, Licorice	320cm	\$17.50
Softdrape Plus	Chalk, Noir, Pumice	300cm	\$16.50
Enviroguard	Offwhite	280cm	\$12.50
Enviroguard	Offwhite	320cm	\$14.90
Thermaback	Offwhite	280cm	\$12.50
Thermaback	Offwhite	320cm	\$14.90

JAMES DUNLOP

NAME	COLOUR(S)	WIDTH	PRICE PER METRE
Broadline FR	Swan, Shell	300cm	\$18.50
Bumph	-	150cm	\$10.75
Satin Line BO	Ivory	280cm	\$10.99
Sunteen	Offwhite	300cm	\$12.10

BASFORD BRANDS

NAME	COLOUR(S)	WIDTH	PRICE PER METRE
Thermoguard NON FR	Offwhite	280cm	\$13.50

NOTES

A **\$10 handling fee per job** will be added to your account/invoice if you choose to purchase your own lining instead of buying from our stock, provided it is from the options we supply.

Lining joins direction:

- Blackout or triple weave lining behind sheer fabric, joins to face the windows
- Polycotton or 1 pass lining sewn behind solid face fabric, joins to face inward.
- Please specify the direction of any coloured linings, colour side facing out or inward.

SOFT FURNISHINGS

CUSHION COVERS - NON-VELVET FABRICS

Pricing of cushion covers is shown as each, per cover without inners

SIZE	PLAIN	FLANGED	FLANGED <small>with contrast fabric</small>	PIPED
40 x 40	\$32	\$42	POA due to the nature of the request the F1 team will need to calculate the time needed	\$45
45 x 45				
50 x 50	\$34	\$44		\$47
55 x 55				
50 x 30 Lumbar	\$34	\$44		\$47
60 x 60	\$36	\$46		\$49
65 x 65				
ALL OTHER SIZES POA				

Banding/ Trim \$20 per metre additional to grid price

CUSHION COVERS - VELVET FABRICS

Pricing of cushion covers is shown as each, per cover without inners

SIZE	PLAIN	FLANGED* <small>with same VELVET for body & flange</small>	FLANGED <small>with contrast fabric</small>	PIPED
40 x 40	\$35.50	\$46.50	POA due to the nature of the request the F1 team will need to calculate the time needed	\$54
45 x 45				
50 x 50	\$37.50	\$48.50		\$56
55 x 55				
50 x 30 Lumbar	\$37.50	\$48.50		\$56
60 x 60	\$39.50	\$50.50		\$59
65 x 65				
ALL OTHER SIZES POA				

*depending on the velvet, fabric will be
bruised where the stitch lines are

Please note the pile direction of velvets

Banding/ Trim \$20 per metre additional to grid price

CUSHION INNERS

F1 can supply inners, POA.

Pricing varies depending on quantities.

TIEBACKS

- Tiebacks are padded with compressed tetron.
- Straight and top stitched.
- Brass rings sewn in.
- Piping cord (6mm dia approx.)

Pricing of tiebacks is shown as each

TYPE	SIZE	PRICE
Straight Plain	550 - 899mm	\$25
Straight Plain	900 - 1400mm	\$37.50
Straight Piped	550 - 899mm	\$35
Straight Piped	900 - 1400mm	\$47.50

Shaped Plain	550 - 899mm	\$27
Shaped Plain	900 - 1400mm	\$39.50
Shaped Piped	550 - 899mm	\$37
Shaped Piped	900 - 1400mm	\$49.50

For any other custom tieback shape/style or sizes please send a template or sample over to F1 for POA

TIEBACK SIZE GUIDE

- 1 width curtain 550mm long
- 1½ width curtain 600mm long
- 2 width curtain 700mm long
- 2½ width curtain 800mm long
- 3 width curtain 900mm long
- 3½ width curtain 1000mm long
- 4 width curtain 1100mm long
- 4½ width curtain 1200mm long
- 5 width curtain 1400mm long



Check out our website to see images of the styles of tiebacks we offer

SOFT FURNISHINGS BEDDING

ITEM	SINGLE	KS/ DOUBLE	QUEEN	KING	SUPER KING
Valance Corner box pleated style	\$268.70	\$295	\$320	\$355.45	\$380.45
Standard sizes	910 x 1880	KS 1070 x 2030 DB 1370 x 1880	1530 x 2030	1670 x 2030	1830 x 2030
Fabric Qty required Based on 150cm plain NIL PR fabric	3m	3.3m	3.6m	3.8m	4m

The **Corner Box Pleated** style is fully lined on three sides with **unbleached Calico lining**, supplied by F1 and included in the price grid.

- The drop measures 340mm.
- Pricing and fabric quantities listed apply only to the specified sizes and fabric widths.
- For velvet fabric, add 20% to the price grid.

OTHER BEDDING

We can manufacture Duvets, Bedspreads, Coverlets, Pillowcases and much more, please get in contact with us for a specialised quote



SQUABS

Please contact us to obtain a quote

Information required for quoting:

- Dimensions
- Indoor/ Outdoor
- Firmness/ Thickness of Foam
- Dacron wrapped or not
- Wrapped/ Bordered unpiped/ Bordered Piped
- Fabric specifications

SPECIFICATIONS

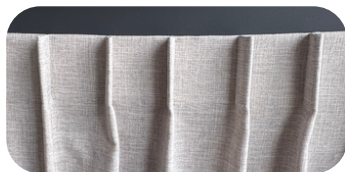
HEADINGS



Gathered/ Pencil Pleat

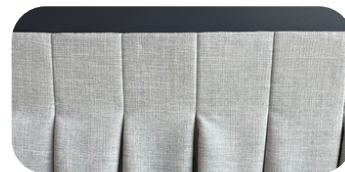
Recommended fullness: 70% & over (x1.7)

75mm multipocket polyester tape.
50mm, 100mm & 150mm also available on request



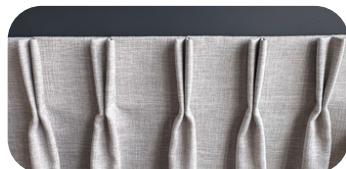
Single Pleat

Recommended fullness: 70% (x1.7)
1st pleat approx. 100mm from edge
Gap between pleats: 100-110mm
Pleat projection: 25-30mm
100mm buckram tape



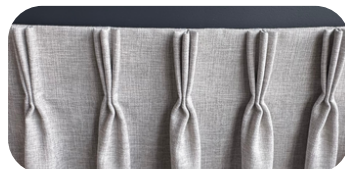
Inverted Pleat

Recommended fullness: 90% (x1.9)
1st pleat approx. 100mm from edge
Gap between pleats: 100-120mm
90mm of fabric used in each pleat



Double Pleat

Recommended Fullness: 80-100% (x1.8-2.0)
1st Pleat approx. 100mm from edge
Gap between pleats: 100-120mm
Pleat projection: 25-50mm



Triple Pleat

Recommended Fullness: 110% (x2.1)
1st Pleat approx. 100mm from edge
Gap between pleats: 100-120mm
Pleat projection: 25-30mm



New York Pleat

The wave is anchored at the back with a lining tape to hold shape
Recommended Fullness: 60-90% (x1.6-1.9)
1st Pleat approx. 100mm from edge
Gap between pleats: 90-100mm



F1 Wave

The Fabric & Buckram is held together by vertical stitch lines every 120mm apart.

The wave is anchored at the back with a lining tape to hold shape. Not recommended for unlined sheer drapes as hooks show through and are not very securely held.

Recommended Fullness: 60-100% (x1.6-2.0)



S-Fold

This system is used on a wave track, tethered glide system where the curtain hangs under the track
Recommended Fullness: 100% (x2.0)
S-Fold Transparent tape is sewn across the top the curtain
The wave depth is dependent on the number of glides on the track
Plastic hooks are provided to match glider count.



Small Eyelet

Often used in Healthcare settings for privacy curtains or shower curtains
Recommended Fullness: 25% or over (x1.25)

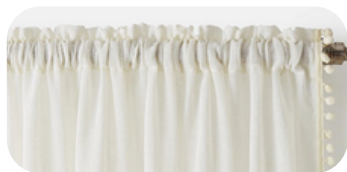
Eyelets are placed evenly along top of curtain, usually approx. 150mm apart.

Number of eyelets to be specified on worksheet

Nickle 7mm eyelets available

SPECIFICATIONS

HEADINGS



Slot Heading

Priced same as Gathered headings



Madison Pleat

Like an Inverted Pleat but with less fullness



Amercia Pleat

Like an Inverted Pleat but with less fullness



Large Eyelets

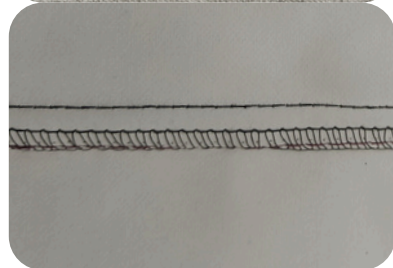
Recommended Fullness: 80-100%

(x1.8-2.0)

1st Pleat approx. 100mm from edge

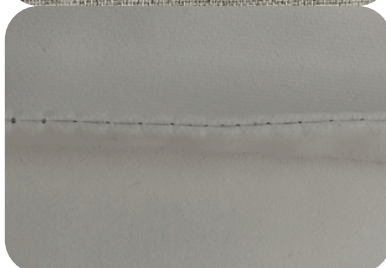
Gap between eyelets: 100-120mm

NEATEN JOINS / FRENCH SEAM



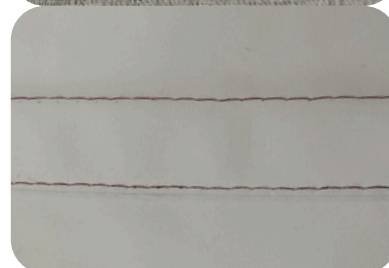
Overlocked & sewn down

shown with contrasting thread for example only - extra surcharges apply



Sewn down

shown with contrasting thread for example only - extra surcharges apply



French Seam

shown with contrasting thread for example only - extra surcharges apply

SPECIFICATIONS

TAPES OFFERED

- Premier 75mm/ 3 Pocket Tape
- MP40
- Mozart
- S-Fold Tape
- Bocelli
- Double PREM (150mm)
- 100mm Tape
- 5 Pocket Tape
- 6 Pocket Tape

HEMS

- Front fabric with or without cord weight: Double 70mm blind hem, sides double 30mm blind hem.
- Linings Hem: Double 50mm flat sewn, sides double 30mm flat sewn.
- Self-weighted fabrics, specify on the worksheet if this is to be retained or removed
- Curtains under 1200mm finished length D50b/h
- Triple weave fabrics S30b/h side and S70b/h hem
- Any specs different from the above **MUST** be mentioned on the worksheet.
- Some fabrics might prove unsuitable for blind hemming, F1 Curtain Company may have to flat sew them.

HOOKS

- Pleated: all drapes come with metal hooks (Zinc coated) in every pleat.
- Gathered: all drapes come with white plastic hooks in every fourth pocket of the gather tape.
- Hook position recommendations – speak with F1 projects

RETURNS/ ALLOWANCE

- Gathered tapes F.L + 200mm
- Buckram 100mm curtains F.L +300mm
- Buckram 150mm curtains F.L +350mm
- All above plus pattern matching.
- Sheer or unstable fabric may need more allowance.

½ drop repeats

- Every second drop requires 1 whole additional repeat

Trims

- Side trims allow 200mm longer than length of curtain
- Bottom trims allow 100mm wider than total number of widths for each curtain.

Roman blind - Face Fabric

- Bonded – FL +200mm, Width +100mm
- Sewn – FL +200mm, Width +200mm
- Tucked – FL +500mm, Width +200mm

Roman blind - Lining - prefer 280cm

- Bonded – FL +500mm, Width +200mm
- Sewn – FL +500mm, Width +100mm
- Tucked – FL +500mm, Width +100mm
- 150w linings must be railroaded – FL +500mm, Width +200mm

SPECIFICATIONS

MATCH FROM TOP

- Check patterns, horizontal stripe, bold patterns and curtains in the same room but varying finished lengths are recommended to be made match from top. F1 will confirm with clients prior to production

OFF CUTS

- All offcuts/ balance fabrics over 500mm will be sent back to the customer with the job.

PACKAGING & SHIPPING

- Clear instructions need to be provided about the dispatch/ collection.
- “To be collected” jobs will be held in the workroom.
- All jobs will be plastic tubed and pleat tied at the top.
- Jobs will be put in a large enough box so that drapes only need to be folded once. The box will be sealed and labelled with the address and freighted out.
- **Freight and shipping are additional costs** and not included in the prices listed in this price list.
- **Packaging prices are additional** to any freight/ shipping costs. Any jobs collected from the workroom not in boxes will just have the plastic tubing priced out.
 - \$2 per pair of plastic tubing (pair of curtains, romans being collected from F1)
 - \$8 per cardboard box
 - \$6 per roman blind packaged for freight/ shipping

INVOICING NOTES

- All part drops or widths charged as full drops or widths.
- If dispatch via courier occurs later, a separate freight invoice will be sent out.

DISCLAIMERS

- **Fabric suitability** – Fabrics today are made from a wide variety of yarns and may be woven in various ways. Not all of these fabrics can be regarded as ideal for soft furnishing products such as drapes and roman blinds. Some fabrics do not have the drape-ability that may be desired by your customer, this problem can be caused by inherent shrinkage and/or dropping (stretching) as in fabrics with horizontal/vertical woven creasing. This type of fabric is likely to have an unstable movement and is usually recommended to be puddled.
- **Steam/ iron use on fabrics**, F1 will check the fabric suitability prior to avoid shrinking.
- **No responsibility for:** Weave variations, Movement of fabric e.g: linens, loose weaves, creased & velvets.
- **Hiding Joins in Pleats** - Not Always Possible. If widths vary in the same room, the crucial criteria is for the gaps to be uniform and the pleats to be of similar size. Not possible for New York Pleat heading, the best option is to use continuous fabrics.
 - Pleat size might be altered to hide joins if needed.
- **Fabric Flaws - Excess time spent by F1 on flawed fabrics will be oncharged to customers who can pass onto the fabric suppliers themselves. Hourly rates may apply.**
- F1 Curtain Company reserve the right to rectify any errors made while manufacturing the goods. The customer can get a third party to rectify the issue only after obtaining mutual consent with F1 Curtain Company.

F1 Curtain Company's Terms & Conditions can be found [here](#)