

Copper Theft — A Growing Facilities Risk

Safeguard infrastructure through targeted protection measures

Across the commercial and industrial property sector we are seeing a sharp uplift in copper theft incidents, particularly across rooftops, plant rooms, external risers and perimeter cabling routes. Offenders are causing serious damage to building infrastructure by cutting through live cabling to remove copper conductors, then on-selling as scrap metal.

This is not only driving costly repairs and downtime for building owners but also creating significant life-safety hazards. In several recent incidents, thieves cut energised circuits (without understanding load conditions), resulting in arcing, equipment damage and tenant impact.

To help de-risk your assets over the high-risk holiday period, Prolux recommend implementing Mechanical Protection and Smart Surveillance with Motion Analytics.

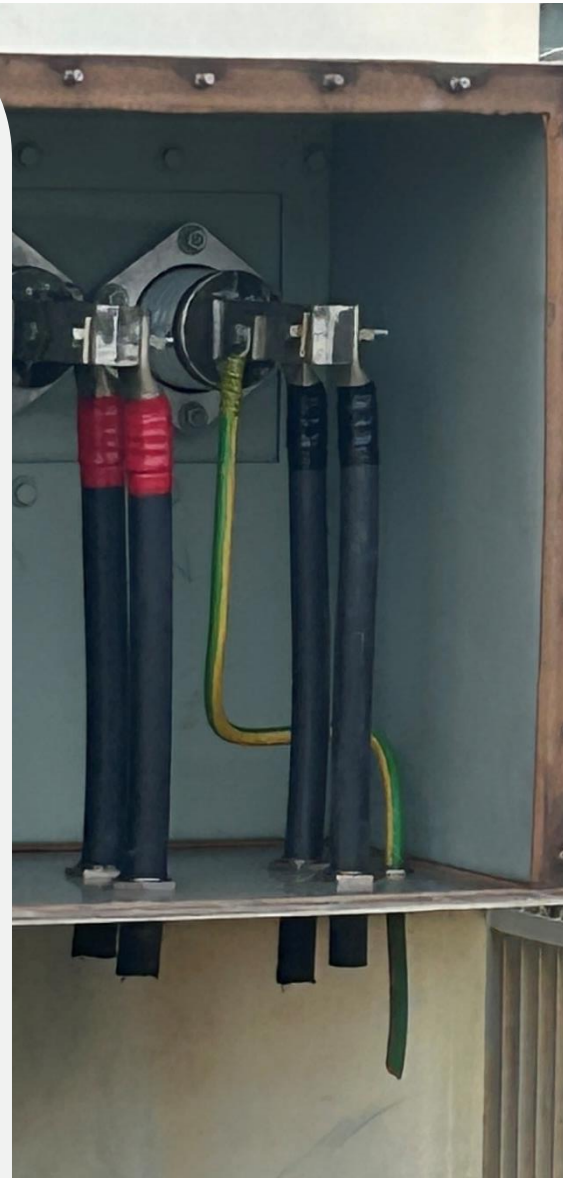
Mechanical Protection

Installing robust mechanical protection around exposed or accessible cabling significantly reduces the likelihood of theft.

Options include:

- Heavy-gauge conduit or trunking over external cable runs
- Lockable steel shrouding around rising mains and submains
- Bollard-protected riser enclosures in vulnerable external areas.

These solutions act as a physical deterrent and make access to copper conductors extremely time-consuming and noisy.



**Innovative Electrical
for a Better Tomorrow**

Smart Surveillance with Motion Analytics

Surveillance technologies have advanced well beyond standard CCTV.

We recommend:

- Motion-activated cameras with AI-based detection
- Systems that trigger alerts directly to security teams or FM providers
- Integration with lighting control so perimeter floodlights activate automatically

These analytics-driven systems create proactive monitoring and enable rapid response before offenders can cause significant damage.

Prolux Support

Our team can conduct a short-form risk assessment to identify vulnerable cabling routes and provide a targeted protection plan.

We can also specify and install compliant mechanical protection solutions and coordinate integration of surveillance hardware.

Staying ahead of this emerging risk protects your asset, reduces downtime and safeguards tenant operations.

If you would like Prolux to review your site before the holiday period, please contact your Project Manager to schedule an assessment.

DECEMBER 2025



**Innovative Electrical
for a Better Tomorrow**