



Pressure (P) Series Blast Cabinet Owner's Manual



SUPERIOR PERFORMANCE
And Quality In Blast Cleaning Equipment



! WARNING

READ MANUAL

Failure to read, understand & follow all safety and operation procedures in this manual can cause injury or death. Manuals that are lost, incomplete, or damaged, must be replaced immediately

Manual # pseries1611

Table of Contents

| | |
|--|--------|
| Important Notice | 3 |
| Warnings. | 4 |
| Important Safety Items | 5 |
| Basic Principles | 6 |
| Set-Up Requirements. | 6, 7 |
| Media Types | 7 |
| Cabinet Installation (P4836-6FH / 6F) | 8 |
| Cabinet Installation (P4836-62C) | 9 |
| Cabinet Installation (P4848-92C or 9FH) | 10 |
| P Series Cabinet Operation | 11 |
| P Series Cabinet & Dust Collector Maintenance | 12 |
| P Series Blast Pot Components | 15 |
| P Series Cabinet Parts | 14, 15 |
| P Series Cabinet & Pilot Line Schematic and Parts. | 16 |
| Auto Air Inlet Valve Schematic (280750) | 17 |
| Exhaust (Dump) Valve Schematic (EE03371) | 18 |
| Exhaust (Dump) Valve Schematic (290375) | 19 |
| Mini-Micro (Media) Valve Schematic (EE2124-105) | 20 |
| P Series Trouble Shooting | 21, 22 |
| CSA Certificate of Compliance | 23 |
| Upgrade Kits & Options | 24 |
| Warranty Coverage | 24 |

Important Notice

TO DISTRIBUTORS, PURCHASERS AND END USERS OF MOD-U-BLAST PRODUCTS

The information provided described and illustrated in this material is intended for experienced, knowledgeable users of abrasive blasting equipment and supplies(products).

The products described in this material may be combined as determined solely by the user in a variety of ways and purposes. However no representations are made as to intended use, performance standards, engineering suitability, safe practices or compliance with government regulations and laws that apply to these products, products of others, or a combination of various products chosen by the user or others. It is the responsibility of the users of these products, products of third parties, and a combination of various products, to exercise caution and familiarize themselves with all applicable laws, government regulations and safety requirements.

Nor are representations made or intended as to the useful life, maintenance cycles, efficiency or performance of the referenced products of any combination of products. This material must not be used for estimating purposes. Production rates, labour performance or surface finishes are the sole responsibility of the user based on the user's expertise, experience and knowledge of industry variables.

It is the responsibility of the user to insure that proper and comprehensive training of operators has been performed and all environmental and safety precautions observed.

Mod-U-Blast Inc. provides a variety of excellent products to the surface preparation industry, and we are confident that all proficient users, operators and contractors in this industry will continue to use our products in a safe and knowledgeable manner.

Before using this product, read all instructions, literature, labels, specifications and warnings sent with and affixed to the unit.

If operation of the unit is unclear after reading this manual, contact your supervisor for instructions. It is the responsibility of the employer to read the following instructions to users of this equipment. Periodic inspection at the work site should be made by supervisory personnel to ensure the blast machine is being properly used and maintained. A copy of this owner's manual must be kept with the blast machine and readily accessible to the blast machine operators at all times.

Warnings



Over time, exposure to any dust could result in lung medical issues or death. Use a reverse pulse dust collector with HEPA filters if lead or other toxic materials are removed from items during the blasting process.



Never point the blast nozzle at the viewing window. Blow-off parts before opening the door. Keep doors closed until all dust has been exhausted after blasting.



Do not disconnect hoses while the system is under pressure, this could cause serious injury or death. Use coupler lock pins and hose whips to prevent accidental disconnection.



Use proper respirator and eye protection when servicing any component in this blast system.



Do not disable the safety door interlock system as it may cause injury from unintentional blasting.



When servicing the cabinet disconnect and lock out the electrical supply and disconnect the air line from the compressor.

1. Important Safety Items

Read all instructions before using this equipment. For efficient and safe production reference the OSHA requirements.

1.1 Pressure Series Cabinet Manual

This manual contains important instructions for the safe operation of this cabinet and its related equipment. Before attempting to operate this pressure series cabinet and its components, all personnel intending on using this equipment must read the complete manual and familiarize themselves with the operation and parts.

1.2 Safety Considerations

- Pressure blast cabinets require high pressure air to operate.
- The blast cabinet must be grounded to avoid shock.
- Electric extension cords must be three wire grounded and rated for the amperage of the blaster. Check the cabinet serial tag for the rated amps.
- Dust from the blast cabinet should be collected by a reverse pulse collector or a dry filter and must not be allowed to become concentrated in areas where workers are exposed. This requires proper maintenance of the dust collection system.

1.3 Operator's Responsibilities Before Starting

- Inspect fittings and hoses for damage and wear. Repair any air leaks before operating.
- Check the gaskets on all doors.
- Only operate the blast cabinet with all the doors securely closed and with the dust collection system running.
- Clean the dust collector filters as needed and empty the dust collector hopper daily.

IMPORTANT NOTE: If using a reverse pulse dust collector the filters need to be seasoned before pulsing. Do not turn on the auto pulse or manually pulse until 2 hours of blasting has occurred. Dust collectors with sock type filters do not need seasoning.

1.4 Cautions

- The Mod-U-Blast pressure series blast cabinet is to be used with appropriate media. Contact your representative for information.
- The compressed air to the pressure system needs to be dry.
- Working pressure of the blast cabinet and related components must not exceed 125 P.S.I.
- Keep the blast nozzle controlled and aimed at the work always.

1.5 Maintenance

- Disconnect the power and air supply from cabinet before servicing.
- Keep your machine in good repair. Use Mod-U-Blast parts only and do not substitute or modify.



DO NOT WELD OR GRIND ON THE BLAST VESSEL AS IT MAY CAUSE WEAK POINTS AND COULD CAUSE SERIOUS INJURY OR DEATH. THIS WILL ALSO VOID ANY WARRANTY COVERAGE.

2. Basic Principles

2.1 Mod-U-Blast Pressure Blast System Description

Our pressure systems consists of these important components:

- Blast cabinet
- Pressure pot
- Reclaimer
- Dust Collector

Refer to Fig. A (pg. 8), Fig. B (pg.9) for the blast machine.

2.2 How The Pressure Blast System Works

With the cabinet doors closed, the main air to the inlet on the cabinet is turned on and media is loaded in through the reclaimer. Turn on the switch for the cabinet lights and press the start button for the exhaust fan (if required). The pressure blast cabinet is now ready to use. Press the foot pedal to start blasting. While blasting the object to be cleaned, the used media falls through the perforated floor into the hopper. It is then pulled up into the reclaimer where the used media is separated and the fine dust is captured in the dust collector and the heavier particles are deposited through a screen into the bottom of the reclaimer. Release the foot pedal to stop blasting and the pop-up will drop refilling the pot with the remaining good media.

3. Set-Up Requirements

3.1 Location

Before setting up your cabinet remember the following points:

- The Mod-U-Blast pressure blast cabinet requires a compressed air supply. **NOTE: The compressed air supply for this unit needs to be completely dry.**
- The cabinet needs a power supply (see paragraph 3.4)
- This cabinet is designed to be used in a heated indoor location.
- Dust can escape from the cabinet while loading and unloading or while servicing the dust collector.

3.2 Compressed Air Requirements

- The compressed air supply should be sized according to the table (shown below.)

| Pipe or Hose Length | VOLUME OF AIR IN CFM'S | | | | |
|---------------------|------------------------|-----|-----|-----|----|
| | 25 | 30 | 35 | 40 | 50 |
| 25' | .75 | .75 | .75 | .75 | 1 |
| 50' | .75 | .75 | .75 | 1 | 1 |
| 75' | .75 | .75 | 1 | 1 | 1 |
| 100' | .75 | .75 | 1 | 1 | 1 |
| 150' | .75 | 1 | 1 | 1 | 1 |

3. Set-Up Requirements cont'd

3.3 Nozzle CFM Requirements

| Nozzle Orifice Size | Air Pressure (psi) | | | | | | | | | |
|---------------------|--------------------|--------|--------|--------|--------|---------|---------|---------|---------|---------|
| | 20 | 30 | 40 | 50 | 60 | 70 | 80 | 90 | 100 | 125 |
| No. 3 ** | 15 CFM | 18 CFM | 22 CFM | 25 CFM | 30 CFM | 35 CFM | 40 CFM | 42 CFM | 45 CFM | 55 CFM |
| No. 4 | 27 CFM | 32 CFM | 41 CFM | 47 CFM | 54 CFM | 61 CFM | 68 CFM | 74 CFM | 81 CFM | 98 CFM |
| No. 5 | 42 CFM | 50 CFM | 64 CFM | 77 CFM | 89 CFM | 101 CFM | 114 CFM | 126 CFM | 137 CFM | 165 CFM |

** Standard nozzle in P series cabinets. Nozzle CFM's needed listed above are with using a new nozzle - cfm numbers will increase as the nozzle becomes worn.

3.4 Electrical Requirements

- Electrical requirements for Mod-U-Blast pressure series cabinets depends on the size of cabinet and reclaimer being used. E.g. The most common cabinets require 1-Ph, 1-Hp at 115 Volts. The light switch will turn on the cabinet lights and the exhaust fan.
- For any fan motor over 1-HP a separate motor controller will need to be installed to control the large power demand required at start-up for 2-Hp and up.

4. Media Types

4.1 Glass Bead Ordering Information

| Stock No. | Description | Size |
|-----------|----------------------------|-------|
| 71003 | #3 (20-30 mesh) glass bead | 20 Kg |
| 71004 | #4 (30-40 mesh) glass bead | 20 Kg |
| 71005 | #5 (40-50 mesh) glass bead | 20 Kg |
| 71005 | #6 (50-70 mesh) glass bead | 20 Kg |
| 71007 | #7 (60-80 mesh) glass bead | 20 Kg |

| Stock No. | Description | Size |
|-----------|-------------------------------|-------|
| 71008 | #8 (70-100 mesh) glass bead | 20 Kg |
| 71010 | #10 (100-170 mesh) glass bead | 20 Kg |
| 71011 | #11 (120-200 mesh) glass bead | 20 Kg |
| 71012 | #13 (170-325 mesh) glass bead | 20 Kg |
| 71100 | MGA MANUS Glass Abrasive | 20 Kg |

4.2 Aluminum Oxide Ordering Information

| Stock No. | Description | Size |
|-----------|------------------------|---------|
| 70012 | 12 grit Aluminum Oxide | 50 lbs. |
| 70016 | 16 grit Aluminum Oxide | 50 lbs. |
| 70020 | 20 grit Aluminum Oxide | 50 lbs. |
| 70024 | 24 grit Aluminum Oxide | 50 lbs. |
| 70030 | 30 grit Aluminum Oxide | 50 lbs. |
| 70036 | 36 grit Aluminum Oxide | 50 lbs. |
| 70054 | 54 grit Aluminum Oxide | 50 lbs. |

| Stock No. | Description | Size |
|-----------|-------------------------|---------|
| 70060 | 60 grit Aluminum Oxide | 50 lbs. |
| 70080 | 80 grit Aluminum Oxide | 50 lbs. |
| 70100 | 100 grit Aluminum Oxide | 50 lbs. |
| 70120 | 120 grit Aluminum Oxide | 50 lbs. |
| 70180 | 180 grit Aluminum Oxide | 50 lbs. |
| 70220 | 220 grit Aluminum Oxide | 50 lbs. |
| | | |

Aluminum Oxide - 12 grit is coarse, 60 grit is medium, 100 grit is fine & 220 grit is very fine
Other Medias are available that are softer - please contact your Mod-U-Blast dealer for further information

P Series Cabinet Installation

Installations vary depending on the type of dust collector - refer to the serial tag for the model number.

4.1 Installation for cabinets with the reclaimer attached and using a dry filter (sock filters) e.g.. P4836-6FH (6F)

NOTE: Pressure cabinets using a dry filter dust collector will have the exhaust motor mounted on top of the reclaimer

1. Remove all components from the pallets and/or packaging, and then refer to Fig. A, (below) for cabinet & dust collector preferred placement and flex hose connection. (see arrows)
2. When placing all components make sure to allow full access to the cabinet doors, reclaimer, dust collector hopper and for any future service needs.
3. Attach the 6" flex hose from the reclaimer fan housing to the dry filter dust collector (flex hose supplied and located inside the dust collector).
4. Place the foot pedal at the front of the cabinet.
5. Minimum of 3/4" compressed air line will need to be attached (customer supplied) to the inlet side of the moisture separator mounted on the right front leg of the cabinet. (Refer to section 3.2 for proper air supply line if distance is a factor)
6. Plug in the cabinet lights via the 3 pronged, 115 volt plug attached to the light housing into the appropriate 115 volt wall receptacle.

P4836-6FH Layout

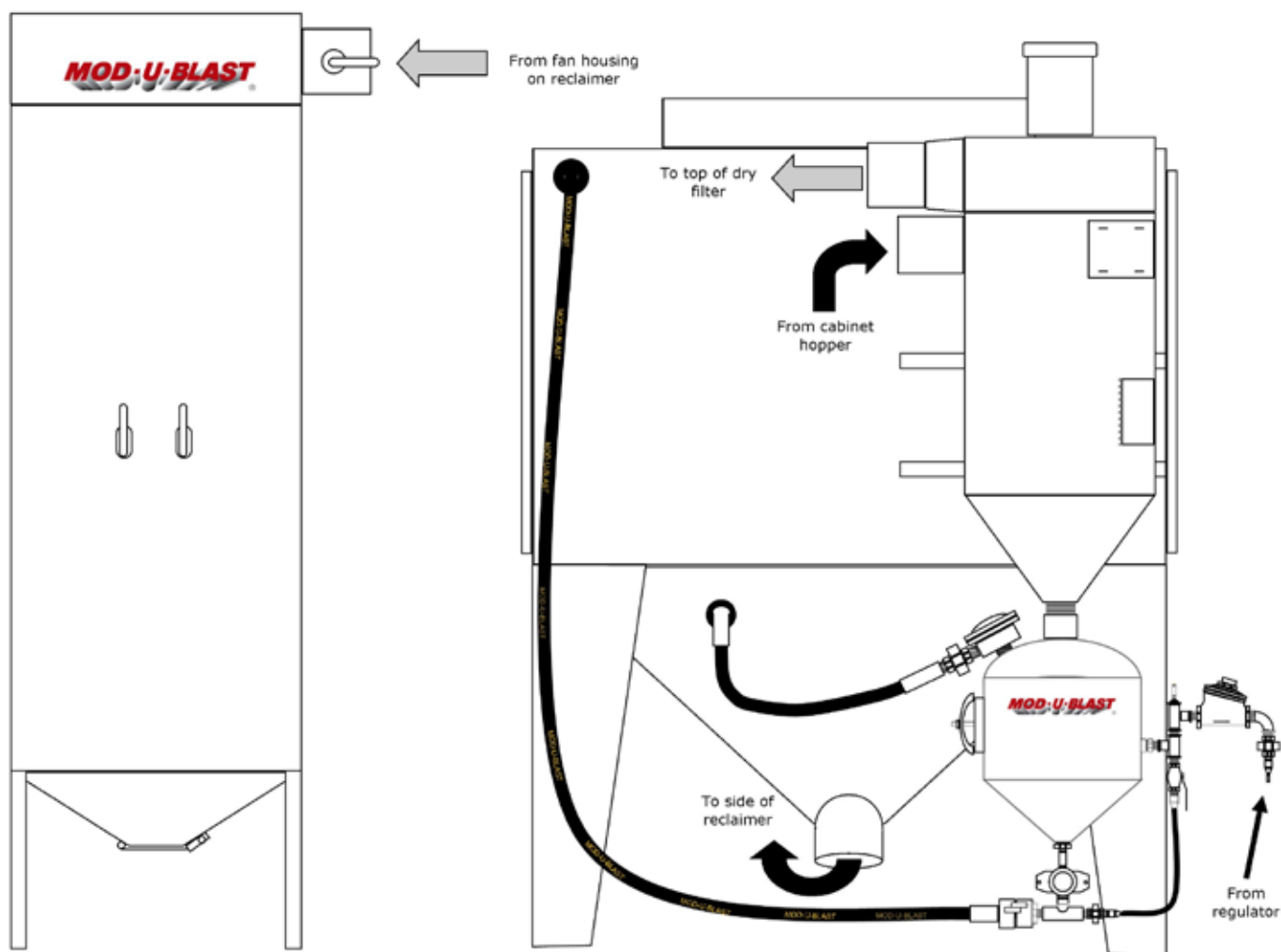


Fig. A

P Series Cabinet Installation cont'd

4.2 Installation for cabinets with the reclaimer mounted on the back and using a reverse pulse dust collector e.g., P4836-62C

NOTE: Pressure cabinets using a reverse pulse dust collector will have the exhaust motor mounted on top of the dust collector.

1. Remove all components from the pallets and/or packaging, and then refer to Fig. B, (see below) for cabinet & dust collector preferred equipment placement and flex hose connection. (see arrows)
2. When placing all components make sure to allow full access to the cabinet doors, reclaimer, dust collector hopper and for any future service needs.
3. Attach the 7" flex hose from the top of the reclaimer to the side of the reverse pulse dust collector (flex hose supplied and located inside the cabinet).
4. Place the foot pedal at the front of the cabinet.
5. Minimum of 3/4" compressed air line will need to be attached (customer supplied) to the inlet side of the moisture separator mounted on the right front leg of the cabinet. (Refer to section 3.2 for proper air supply line if distance is a factor)
6. Attached to the light box on top of the cabinet are 2 wires - one female and one male. Plug the 3 pronged male plug into a 115v receptacle on the wall and plug the female connector together with the male plug from the motor on the reverse pulse dust collector. **NOTE: Reverse pulse dust collectors with the auto pulse option has a male plug end that will also need to be plugged into a 115v receptacle.**

P4836-62C Layout

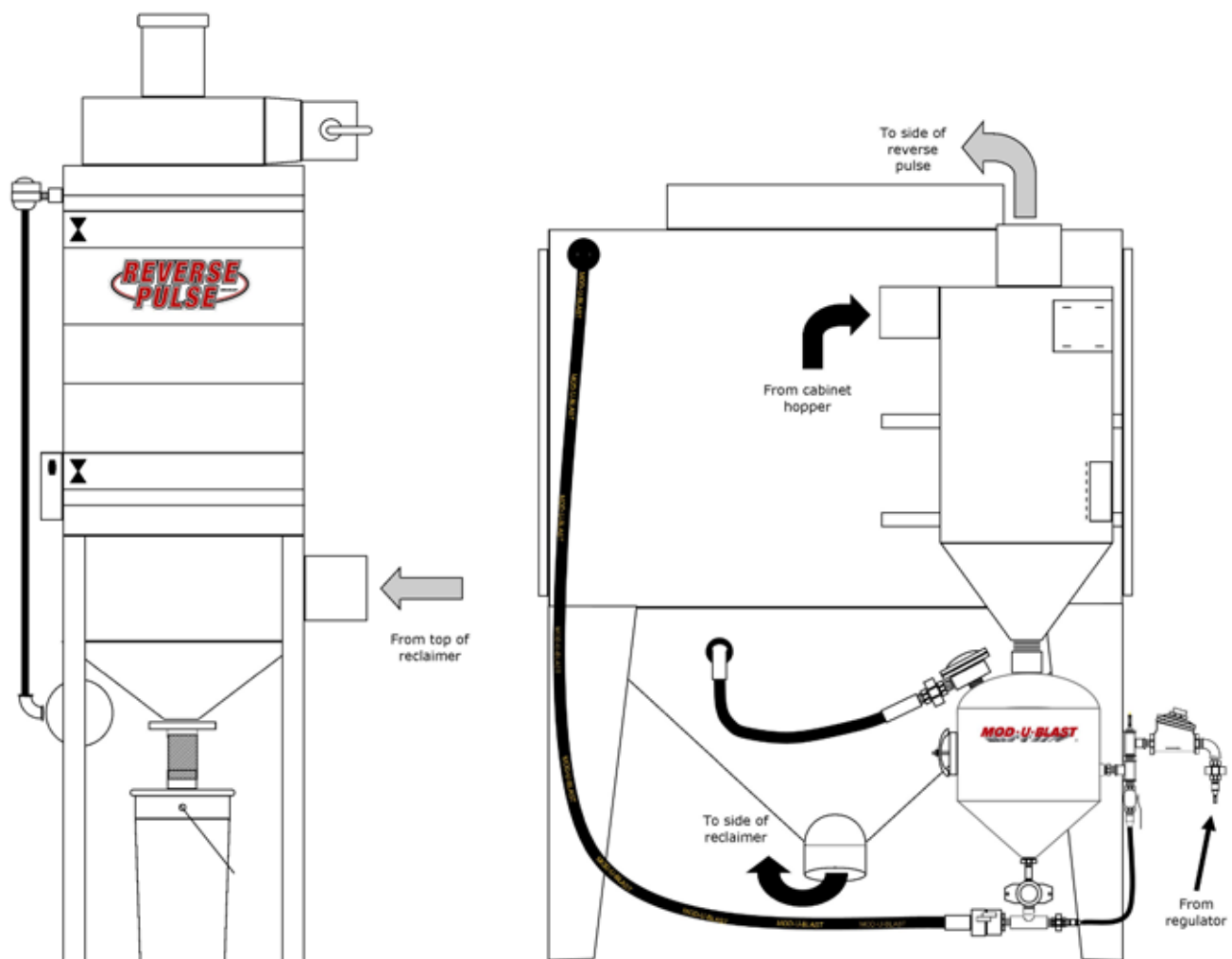


Fig. B

P Series Cabinet Installation cont'd

4.2 Installation for cabinets with an externally mounted reclaiming using a reverse pulse or dry filter dust collector e.g., P4848-92C or 9FH

NOTE: Pressure cabinets using a reverse pulse dust collector will have the exhaust motor mounted on top of the dust collector and using a dry filter will have the exhaust fan mounted on top of the reclaiming.

1. Remove all components from the pallets and/or packaging, and then refer to Fig. C, (see below) for cabinet & dust collector preferred equipment placement and flex hose connection. (see arrows)
2. When placing all components make sure to allow full access to the cabinet doors, reclaiming, dust collector hopper and for any future service needs.
3. Attach the 8" flex hose from the top of the reclaiming to the reverse pulse dust collector (flex hose supplied and located inside the cabinet).
4. Place the foot pedal at the front of the cabinet.
5. Minimum 3/4" compressed air line will need to be attached (customer supplied) to the inlet side of the moisture separator mounted on the right front leg of the cabinet. (Refer to section 3.2 for proper air supply line if distance is a factor)
6. Attached to the light box on top of the cabinet is 1 wire with plug for the cabinet lights. Plug the 3 pronged male plug into a 115v receptacle on the wall. The motor is a 2 hp unit and will need to be hard wired into a motor controller by an certified electrician. NOTE: The layout shown below is used in conjunction with a reverse pulse dust collector. (not shown)

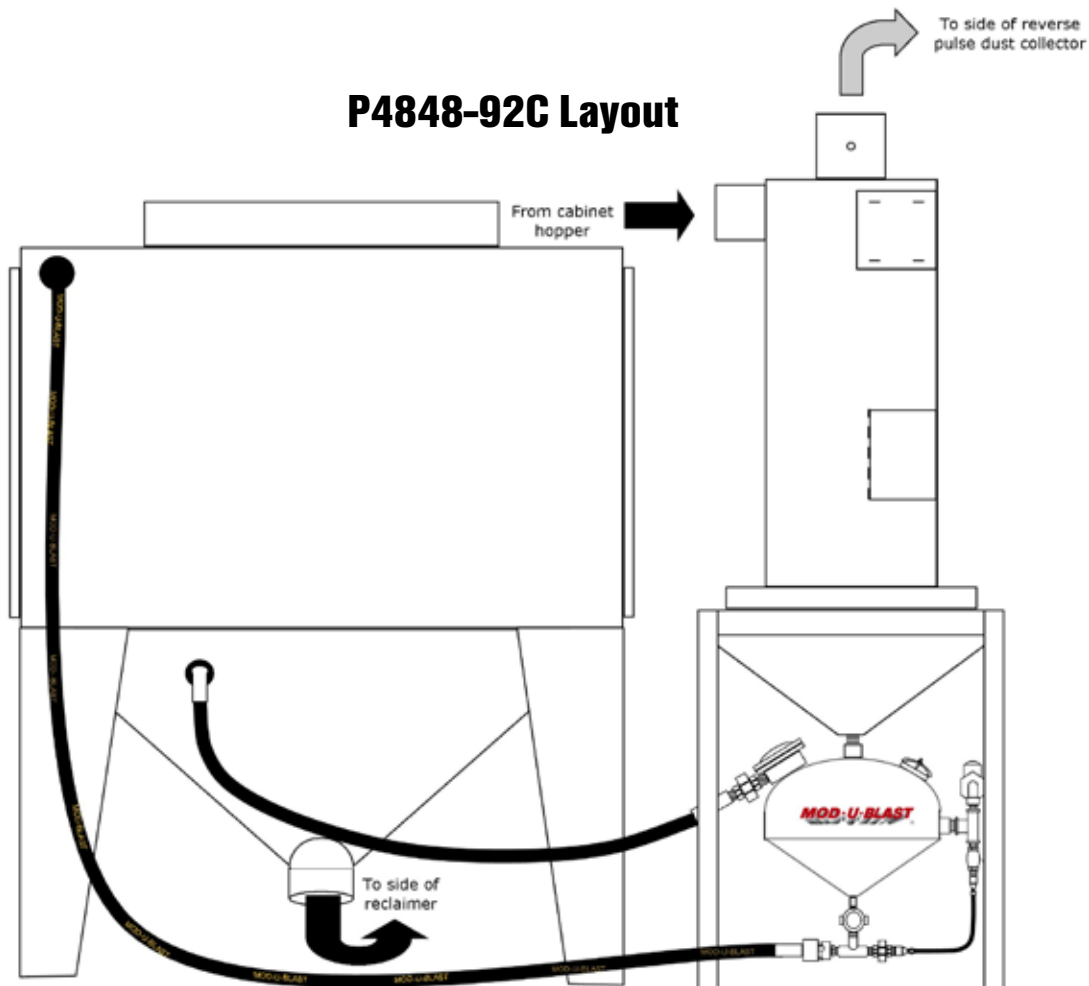


Fig. C

P Series Cabinet Operation

5.1 Loading the Media

1. Most pressure cabinet pots are 0.7 cubic feet which holds approx. 65 lbs. of media.
2. With the exhaust fan off, to add the new media, open the swing door on the reclaimer and pour the media through the screen into the bottom of the reclaimer hopper and into the pot. Do not cover the pop-up or it won't seal properly.
3. Close the door on the reclaimer.

NOTE: DO NOT LOAD THE MEDIA DIRECTLY IN THROUGH THE CABINET DOORS

5.2 Loading Parts to be Cleaned

1. Load parts through either door on the cabinet
2. Parts need to be free of grease, oil, or water.
3. Close the door (s).

5.3 Preparation for Blasting

1. Open the compressed air used to supply the cabinet.
2. Turn on the cabinet lights & exhaust fan.
3. Adjust the regulator to desired blast pressure. (pull knob down to unlock, adjust pressure and push up to lock).
4. Open the Mini Micro Valve at the bottom of the pressure pot located under the reclaimer about 4 turns (CCW) to start and have someone slowly close the valve (CW) until the desired blast stream is achieved. (Fast steady stream is preferred)

5.4 Blasting

1. Place hands into the gloves and grab the blast nozzle firmly.
2. Depress the foot pedal for the blasting to start.
3. Hold the nozzle approximately 6" from the item to be cleaned. Point nozzle at a 45° angle towards the part and use smooth, even strokes for best results.

5.5 Finish Blasting

1. To finish blasting, release pressure from the foot pedal.
2. Once the pot pressure has been evacuated into the hopper of the cabinet the pop-up in the pressure pot will drop to allow the good media that was reclaimed to fall back into the pot for reuse.
3. Use the blow gun inside the cabinet to blow off the part (s) that were just cleaned and allow the dust to clear before removing them from the cabinet.
4. Turn off the cabinet lights and the exhaust fan.

5.6 After Blasting Dust Collector Cleaning

1. For dry filter dust collectors - clean the socks by using the shaker handle on the side by going back and forth about 10 times and then empty the hopper.
2. For Reverse Pulse dust collectors with manual pulsing - clean the cartridge filters by pressing the buttons on the left front side of the dust collector one at a time holding for a 2 second period. Wait 3 seconds between pulses so that the air tank fills up. Repeat 10 times each. (more frequently if dust is excessive inside the cabinet while blasting)
3. For Reverse Pulse dust collectors with automatic pulsing - the auto pulse box is located on the left side of the dust collector. This pulse box can remain on while blasting but the filters are best cleaned when the exhaust fan is off.

P Series Cabinet & Dust Collector Maintenance

6.1 Maintenance Schedules

Daily Start-Up Procedure

- Check air pressure and adjust to desired setting
- Check & adjust media flow (if necessary)
- Correct any safety issues before blasting
- Report and / or fix any operational problems

Daily Maintenance

- Pulse or shake dust filters
- Empty dust collector
- Add required media (DO NOT OVERFILL)

Weekly Maintenance

- Inspect gloves
- Inspect nozzle for wear
- Clean screen on blast machine
- Check lights for proper operation
- Clean / Repair safety glass or protector
- Inspect blast and exhaust hose for holes or weak spots

Monthly Maintenance

- Inspect blast coupler gaskets for wear
- Inspect air hoses for leaks or loose fittings
- Check for quick shutdown of the following:
 - Foot pedal on cabinet
 - Door safety switches

Six Month Maintenance

- Check dust filters for cleanliness
- Inspect door seals
- Check for leaks in dust hoses
- Check for leaks in the cabinet



**For Supplies & Parts
Call 1.800.661.3842**

P Series Blast Pot Components

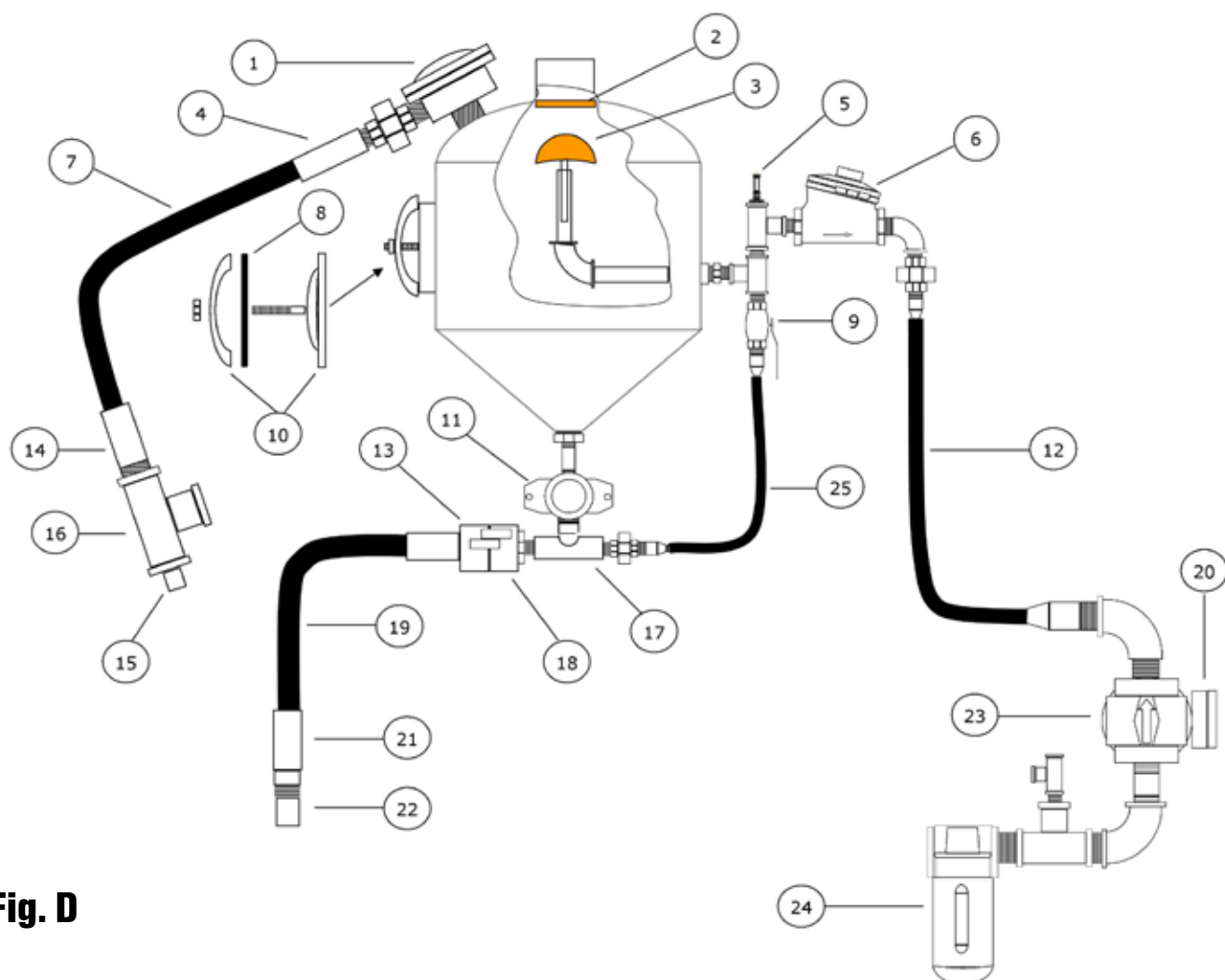


Fig. D

| ITEM # | STOCK # | DESCRIPTION |
|--------|------------|--------------------------|
| 1 | EE03371 | EXHAUST VALVE |
| 2 | EE2100-000 | POP-UP SEAL |
| 3 | EE2100-001 | POP-UP |
| 4 | 60500 | COUPLER (FEMALE THREADS) |
| 5 | 51202-125 | PRESSURE RELIEF VALVE |
| 6 | 280750 | AIR INLET VALVE |
| 7 | SB050-2 | EXHAUST HOSE |
| 8 | 22618 | GASKET |
| 9 | 65-775 | BALL VALVE (CHOKE) |
| 10 | 22614 | HATCH ASSEMBLY |
| 11 | EE2124-105 | MINI-MICRO VALVE |
| 12 | 34 AIR | 3/4" AIR HOSE |
| 13 | 60508 | BLAST HOSE COUPLER |

| ITEM # | STOCK # | DESCRIPTION |
|--------|---------------|-------------------------|
| 14 | 60432 | COUPLER (MALE THREADS) |
| 15 | PL-10 | 1" PLUG |
| 16 | TEE-10 | 1" TEE |
| 17 | EE2124-005-10 | TEE |
| 18 | 605250 | TANK COUPLER |
| 19 | SB050-2 | 1/2" BLAST HOSE |
| 20 | 55415 | PRESSURE GAUGE |
| 21 | 60499 | NOZZLE HOLDER |
| 22 | 31063 | #3 NOZZLE |
| | 31064 | #4 NOZZLE |
| | 31065 | #5 NOZZLE |
| 23 | 50-350 | 3/4" REGULATOR |
| 24 | 50-150 | 3/4" MOISTURE SEPARATOR |
| 25 | 34 AIR | 3/4" AIR HOSE |

P Series Cabinet Parts

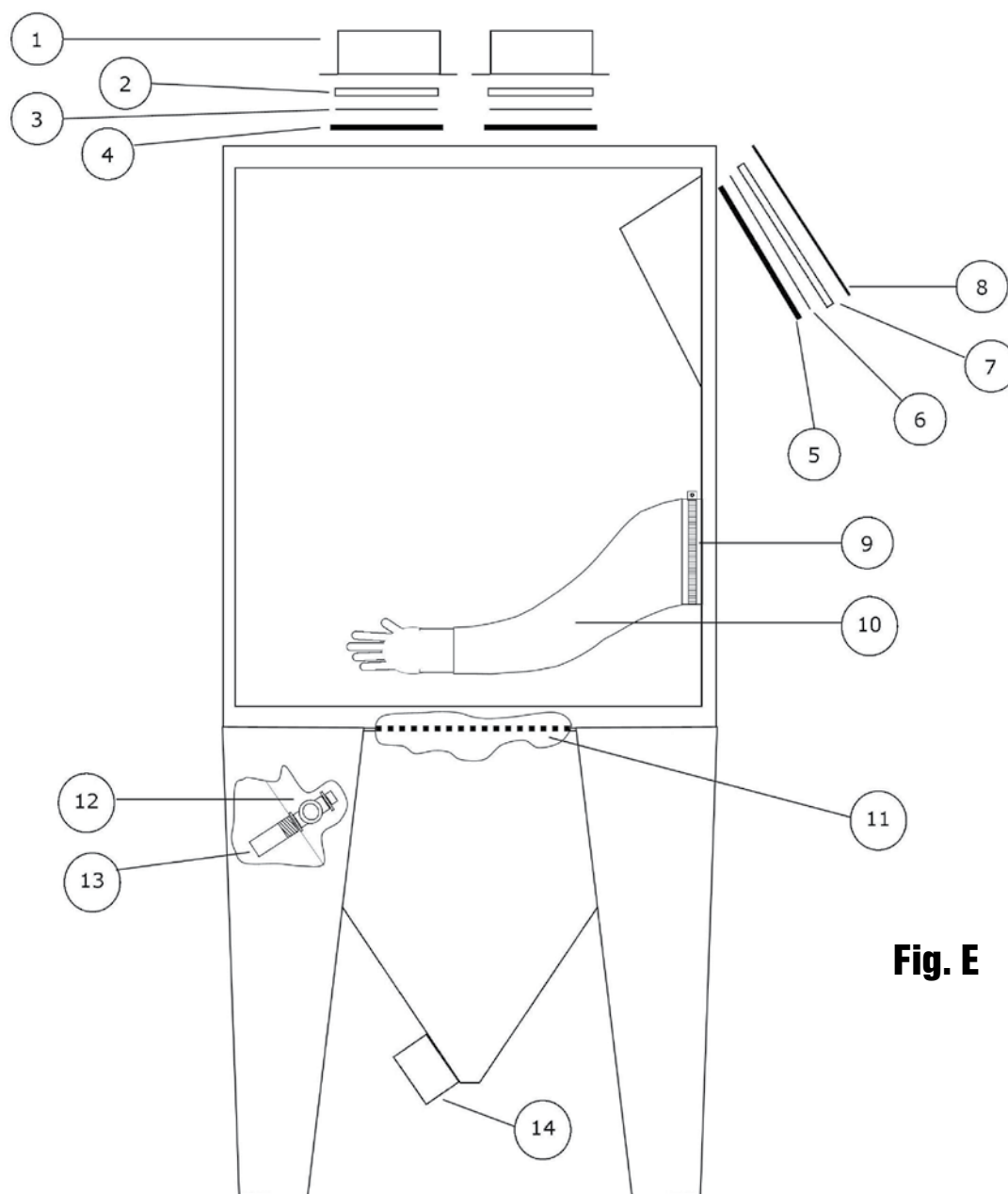


Fig. E

| ITEM # | STOCK # | DESCRIPTION |
|--------|---------|------------------|
| 1 | ZLAMP B | LIGHT HOUSING |
| 2 | 12215A | WINDOW |
| 3 | 43518S | WINDOW PROTECTOR |
| 4 | 16540 | TRIM LOK (5FT) |
| 5 | 16540 | TRIM LOK (5FT) |
| 6 | 41117S | WINDOW PROTECTOR |
| 7 | 12216 | WINDOW |

| ITEM # | STOCK # | DESCRIPTION |
|--------|--------------|-----------------------|
| 8 | 16503 | WINDOW FRAME |
| 9 | 12535 | GLOVE CLAMP |
| 10 | 15270 | GLOVES (SET) |
| 11 | ZF4836H | PERFORATED FLOORING |
| 12 | TEE10 & PL10 | 1" TEE & 1" PLUG |
| 13 | 60432 | HOSE COUPLER |
| 14 | ZPL6F | CABINET HOPPER FLANGE |

Item #11 perforated floor listed is for a typical P4836 cabinet
Ask your representative for other pressure cabinet available floor sizes

P Series Cabinet Parts - cont'd

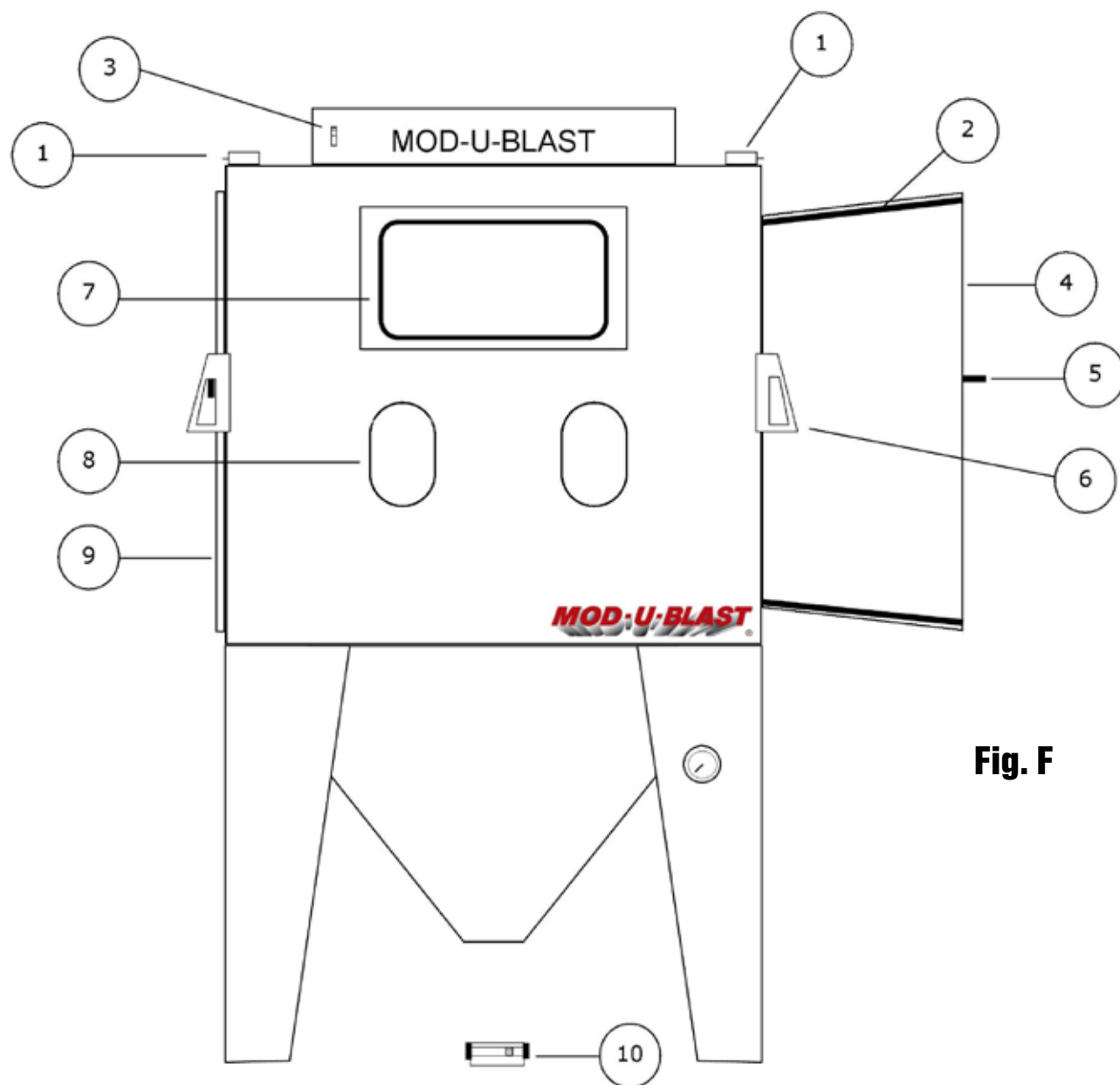
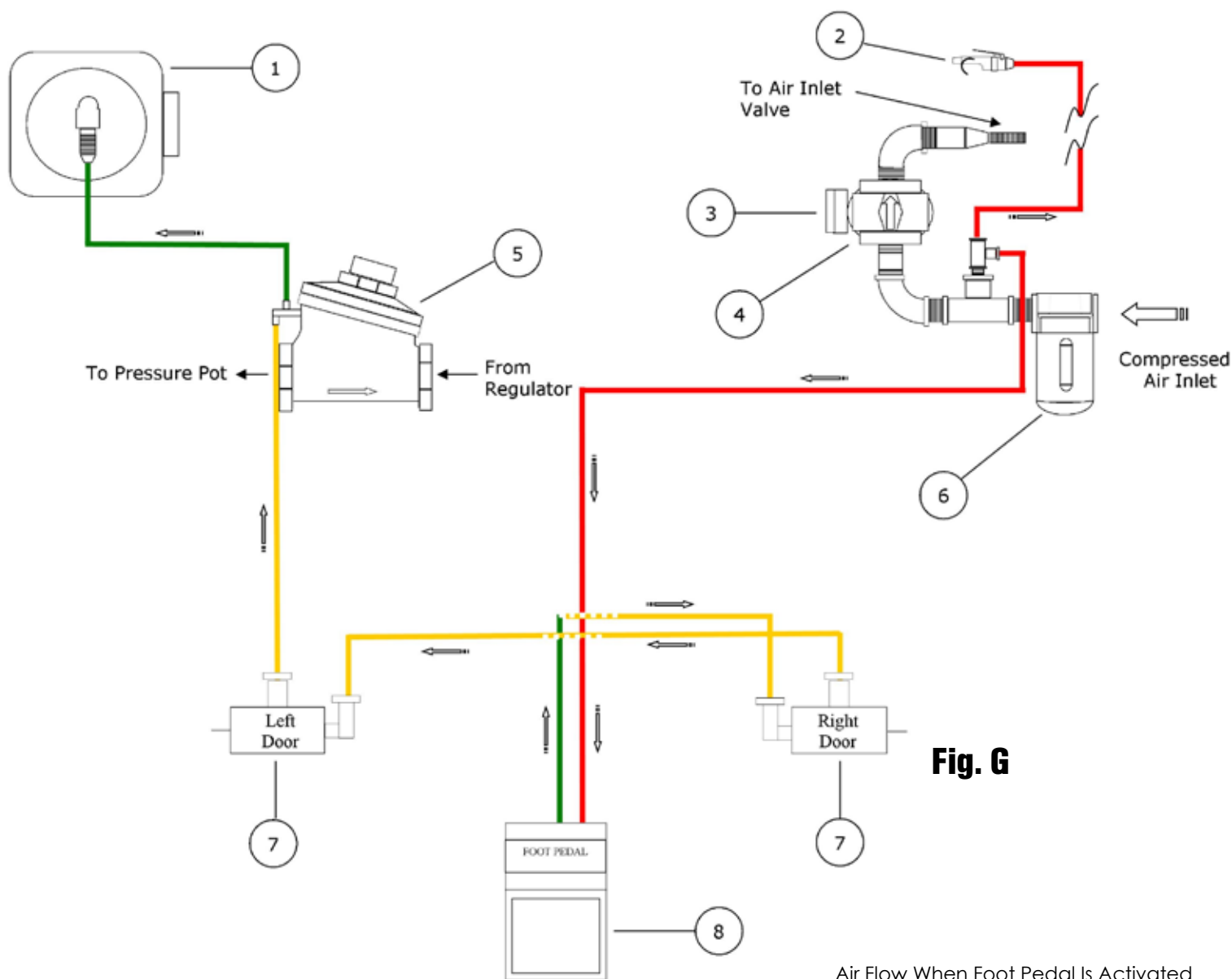


Fig. F

| ITEM # | STOCK # | DESCRIPTION |
|--------|----------|--------------------|
| 1 | 12202 | DOOR SAFETY SWITCH |
| 2 | 12433-2 | DOOR GASKET |
| 3 | 16371 | LIGHT SWITCH |
| 4 | ZDR36 | RIGHT DOOR |
| 5 | Z-HANDLE | DOOR HANDLE |

| ITEM # | STOCK # | DESCRIPTION |
|--------|------------|----------------|
| 6 | Z-LATCH | DOOR LATCH |
| 7 | SEE FIG. E | VIEWING WINDOW |
| 8 | 16542 | GLOVE TRIM |
| 9 | ZDL36 | LEFT DOOR |
| 10 | 16210 | FOOT PEDAL |

P Series Cabinet & Pilot Line Schematic & Parts



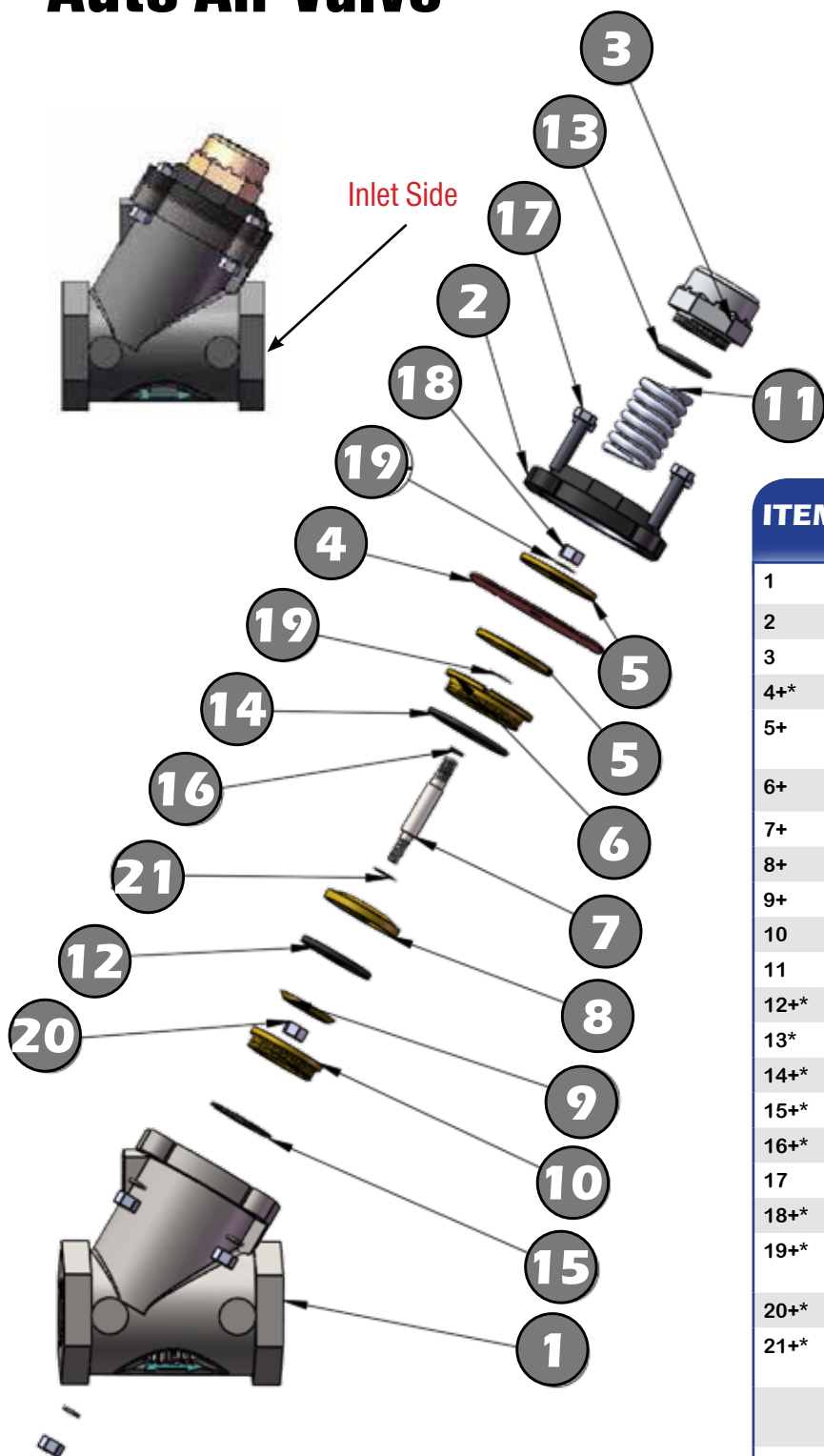
| ITEM # | STOCK # | DESCRIPTION |
|--------|---------|----------------|
| 1 | EE03371 | EXHAUST VALVE |
| 2 | 60-110P | BLOW GUN |
| 3 | 55-415 | PRESSURE GAUGE |
| 4 | 50-350 | 3/4" REGULATOR |

| ITEM # | STOCK # | DESCRIPTION |
|--------|---------|------------------------------|
| 5 | 280750 | 3/4" AIR INLET VALVE |
| 6 | 51-150 | 3/4" MOISTURE SEPARATOR |
| 7 | 12202 | SAFETY DOOR INTERLOCK SWITCH |
| 8 | 16210 | PRESSURE FOOT PEDAL |

Auto Air Valve

Stock # 280750 (3/4" valve)
281000 (1" valve)
281250 (1-1/4" valve)
281500 (1-1/2" valve)

NOTE: Arrow on the bottom of this valve always installed facing backwards to incoming air flow.



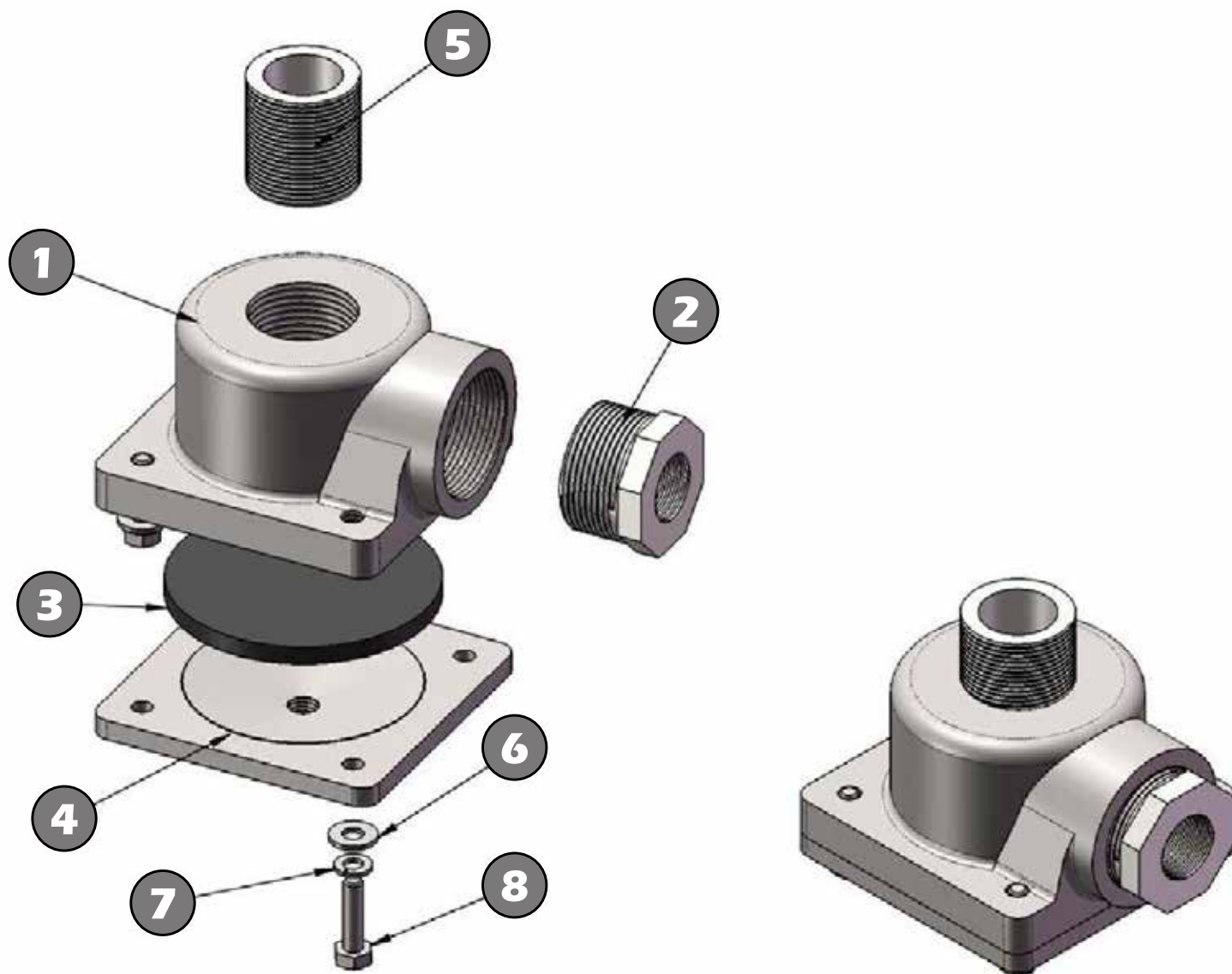
| ITEM # | PART 1-1/4" & 1-1/2" | PART 3/4" & 1" | DESCRIPTION |
|--------|-------------------------|-------------------|---------------------------------|
| 1 | | | BODY |
| 2 | 281258 | 281007 | COVER |
| 3 | | | CAP |
| 4+* | 281256 | 281006 | DIAPHRAGM |
| 5+ | | | WASHER FLAT W201069 |
| 6+ | | | BUSH INNER |
| 7+ | | | SHAFT |
| 8+ | | | SEAT HOLDER |
| 9+ | 281261 | | RETAINER |
| 10 | 281259 | | BUSH GUIDE |
| 11 | 22123 | | SPRING |
| 12+* | | | GASKET RUBBER |
| 13* | | | O-RING 29.87MM I.D. |
| 14+* | | | O-RING 44.12MM I.D. |
| 15+* | | | O-RING 34.65MM I.D. |
| 16+* | | | O-RING 9.19MM I.D. |
| 17 | | | HEX BOLT 1/4" UNC |
| 18+* | | | NYLOC NUT 1/4" UNF |
| 19+* | | | WASHER FLAT 5/16" .5MM BRASS |
| 20+* | | | NYLOC NUT 1/4" UNF |
| 21+* | | | WASHER FLAT 1/4" DIA |
| | 281500 | | AUTO AIR VALVE 1-1/2" |
| | 281250 | | AUTO AIR VALVE 1-1/4" |
| | | 280750 | AUTO AIR VALVE 3/4" |
| | | 281000 | AUTO AIR VALVE 1" |

SEAL KIT:* STK # EE2123-006-99 (3/4" & 1")
 STK # EE212300-799 (1-1/4" & 1-1/2")

REPAIR KIT: + STK # 281003 (3/4" & 1")
 STK # 281253 (1-1/4" & 1-1/2")

MOD-U-BLAST
 Parts Ordering
 1-800-661-3842

1" Diaphragm Dump Valve - Stock # EE03371



| ITEM # | STOCK # | DESCRIPTION | QTY. |
|--------|---------|--------------------------|------|
| 1 | | MAIN BODY | 1 |
| 2 | | REDUCER BUSHING | 1 |
| 3 | EE06149 | DIAPHRAGM | 1 |
| 4 | | TOP PLATE | 1 |
| 5 | | STEEL PIPE | 1 |
| 6 | | PREFERRED NARROW FW 0.25 | 4 |
| 7 | | REGULAR LW 0.25 | 4 |
| | | HBOZLT 0.2500-20X1X1-N | 4 |

Dump Valve -Stock # 290375



| ITEM # | STOCK # | DESCRIPTION |
|--------|---------|-----------------------------|
| 1 | 290315 | BOTTOM PLATE 1/4" NPT |
| 2 | PL02 | PLUG 1/4" BSP |
| 3 | 290313 | BLEED OFF CYLINDER HOUSING |
| 4 | 290330 | PISTON |
| 5* | 290331 | PISTON SEAL |
| 6 | 290321 | BLEED OFF CYLINDER |
| 7 | 290306 | SCREW M8X25 |
| 8* | 290325 | DIAPHRAGM |
| 9 | 290310 | BLEED OFF MANIFOLD 3/4" NPT |
| 10* | 290306 | SCREW M8X25 |
| 11 | 290314 | TOP COVER |
| 12* | 290311 | O RING FOR MANIFOLD |
| 13 | 41-1305 | NIPPLE 3-4 BSP |
| 14* | 290327 | BLEED CYLINDER O-RING |
| 15* | 290316 | GASKET |

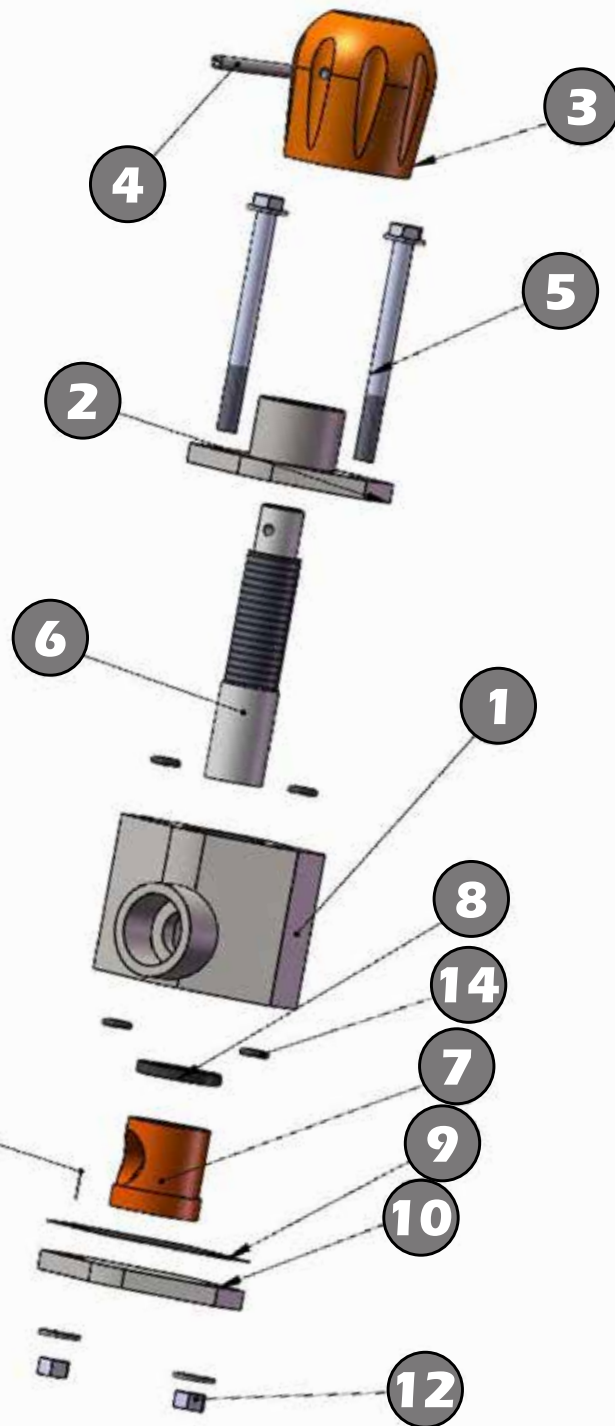
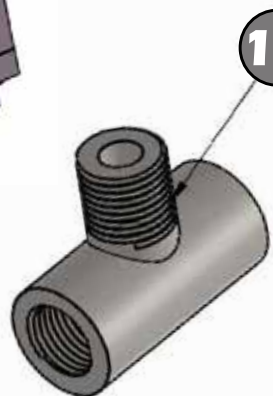
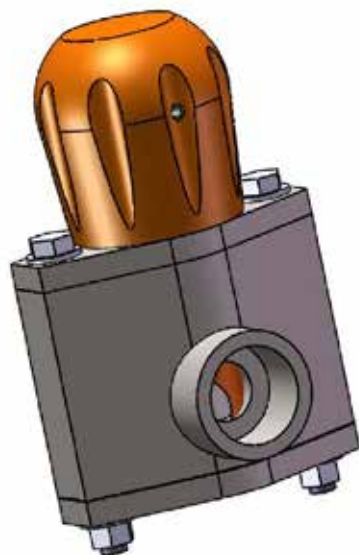
*** INCLUDED IN REPAIR KIT -
STK # 290380**

MOD-U-BLAST
Parts Ordering
1-800-661-3842

Mini M-Valve -Stock # EE2124-105

| ITEM # | STOCK # | DESCRIPTION |
|--------|---------------|------------------|
| 1 | EE2124-000-06 | BODY |
| 2 | EE2125-000-02 | CAP |
| 3 | EE2125-000-01 | KNOB |
| 4* | EE2125-000-03 | ROLL PIN |
| 5 | EE7010-505-56 | BOLT WITH WASHER |
| 6* | EE2125-000-05 | PLUNGER |
| 7* | EE2124-100-08 | SLEEVE, URETHANE |
| 8* | EE2149-000-06 | PLUNGER SEAL |
| 9* | EE2124-000-09 | CAP GASKET |
| 10 | EE2124-000-11 | BOTTOM CAP |
| 11 | EE2124-005-10 | WELDED TEE 3/4" |
| 12 | | NUT |
| 13 | EE2124-000-13 | SEL-LOC PIN |
| 14* | EE2124-000-18 | O RING .5 |

* INCLUDED IN REPAIR KIT - STK # EE2124-100-99



MOD-U-BLAST
Parts Ordering
1-800-661-3842

Pressure Series Cabinet Troubleshooting

| PROBLEM | POSSIBLE CAUSE | REMEDY |
|--|--|--|
| Blast machine will not pressurize | Air supply is off | Open valve from compressor to blast machine |
| | Insufficient air supply | Check for air supply restriction and proper inlet hose size |
| | Exhaust valve | Check diaphragm in exhaust valve for holes |
| | Pilot line(s) leaking | Check all green, red and clear hoses for leaks |
| | Pop-up leaking | Check pop-up and seal |
| | Regulator pressure off or set to low | Check pressure at regulator and adjust |
| No air or media from nozzle | Choke and/or media valve closed | Open the and/or adjust the media valve |
| | Clogged nozzle | Remove the nozzle from the coupler and clear the blockage |
| | Clogged blast hose | Remove the nozzle and disconnect the blast hose from the tank coupling attached to the m-valve. Blow air through the hose to see if it is plugged. |
| Air but no media flow from nozzle | No media in vessel | Check for media in vessel and fill if necessary |
| | Media metering valve is closed | Open the valve and adjust for proper flow |
| | Damp media or object blocking flow at base of vessel | While trying to blast have someone quickly close and open the choke valve. If blockage persists remove the hand-way and check in blast vessel for obstructions |
| Media flow to heavy or pulsing when blasting | Media metering valve closed | Adjust metering valve for a smooth steady stream |
| | Choke valve is partially closed | Open choke valve completely |
| Low pressure at nozzle | Nozzle worn out | Change nozzle |
| | Air Supply hose too small | Use proper supply hose |
| | Hole in the blast hose | Replace blast hose |
| | Pop-Up not sealing properly | Check pop-up and seal for smoothness. Any ridges or rough areas will cause the pop-up to leak |
| | Handway leaking | Replace handway gasket |
| | Auto air valve leaking from top vent | The diaphragm may be damaged, defective or worn out - replace diaphragm. |
| | Choke Valve is partially closed | Open choke valve completely |
| | Media metering valve open to far | Adjust metering valve for a smooth steady stream |
| | Clogged nozzle | Remove the nozzle from the coupler and clear the blockage. |

Call Mod-U-Blast Service if problems persist. **780.425.5510** or visit **www.manusservice.com**

Pressure Series Cabinet Troubleshooting

| PROBLEM | POSSIBLE CAUSE | REMEDY |
|----------------------------------|--|---|
| Poor visibility | Dirty Filters | Shake or pulse filters - if problem still persists filters may need changing |
| | Motor rotation is in reverse | Check that motor is rotating in direction of the arrow located on top of the motor |
| | Hole in dust collector flex hose | Check for leaks and replace |
| | Worn paddle wheel | Check paddle wheel for wear and replace if needed |
| Static shock while blasting | Cabinet and/or operator not grounded | Ground cabinet. Attach a wrist ground strap to the operator. Avoid holding parts off of the flooring so that static can be dissipated through the cabinet |
| Dust leaking from cabinet | Dust socks or cartridge filters may be plugged | Check socks or cartridges for clogging and replace |
| | Doors leaking | Replace door seals |
| Dust leaking from dust collector | Improperly seated dust sock | Check all dust socks seats for proper installation |
| | Loose filter cartridge | Cartridges must be seated so that the seal on top compresses without crushing the filter cartridge |
| | Dust sock (s) or cartridges are damaged | Replace sock (s) or cartridges |

MOD-U-BLAST
Parts Ordering
1-800-661-3842



Certificate of Compliance

Certificate Number: LR 104892-1

Revision: LR 104892-3

Date Issued: January 8, 1998

Issued to: Mannes Abrasive Systems Inc.
1040 - 78 Ave.
Edmonton, AB T6P 1L7
Canada
Attention: Mr. Tom MacLean

The products listed below are eligible to bear the CSA Mark

¹NOTE: The "NRTL/C" indicator also appears adjacent to the CSA Mark.

Issued by: Alan Jenkins, E.T.
Edmonton, AB Canada

Signature: 

PRODUCTS

9091 01 - MOTOR OPERATED APPLIANCES - Miscellaneous

9091 81 - MOTOR OPERATED APPLIANCES - Miscellaneous

PART A

Blast Cleaning Equipment, Cord-connected, MOD-U-BLAST, Models E2424, E3624, E4824, may or may not be followed with suffixes VAC or DC; Models S3026, P3026, S3626, P3626, S3636, P3636, S4826, S4836, P4836, S4848, P4848, P6026, S6036, P6036, S6048, P6048, S6060, P6060 may or may not be followed with suffixes DC, followed by 3B or 3F. Rated 115 V ac, 60 Hz, 10 A. Max. with a 300 CFM Reclaimer, 15 A. Max. with a 600 or 900 CFM Reclaimer.

LEGEND

| | |
|-----|---------------------------------------|
| E | Economy Model |
| VAC | Industrial Vacuum Collector |
| DC | 150 CFM Cartridge Type Dust Collector |
| S | Suction Cabinet |
| 3 | 300 CFM |
| 6 | 600 CFM |
| 9 | 900 CFM |
| B | Dust Bag |
| F | Multi-Bag Dust Filter Cabinet |
| P | Pressure Cabinet |
| D | Dual-Station Cabinet |

¹The "NRTL/C" indicator adjacent to the CSA Mark signifies that the product has been evaluated to the applicable ANSI/UL and CSA Standards, for use in the U.S. and Canada. NRTL, i.e. Nationally Recognized Testing Laboratory, is a designation granted by the U.S. Occupational Safety and Health Administration (OSHA) to laboratories which have been recognized to perform certification to U.S. Standards.

Upgrade Kits and Options

Upgrade kits and options are also available to increase the production, efficiency and wear ability of Mod-U-Blast pressure cabinets and are listed below:

- Puck Board Lining
- Manual Turntables
- Automated Rotating Turn Tables
- Inside/Outside Track Assemblies
- Pipe Pass Thru Doors
- Pipe Roller Carts & Tracks
- Mobile Cabinet/Dust Collector Cart
- Multi Nozzle Applications
- Mechanical Reclaim Systems

Contact Your Mod-U-Blast Distributor to Find Out More

Warranty

Mod-U-Blast equipment is covered by a one (1) year warranty against defects in material and workmanship starting from the purchase date. This covers mechanical components, air valves and plumbing, electrical components, air motors, vessels, machine body (normal wear).

This warranty does not apply to abnormal use of the equipment or parts. Parts subject to abrasive wear, such as nozzles, hoses, dust filters, windows and window protectors are not covered by the warranty.

Claims will be honored only if the warranty card is returned within a period of two months from the factory shipping date.

The card can be returned to your Mod-U-Blast salesperson or mailed to the address below.

In the event of failure of this equipment
please contact a Mod-U-Blast service centre
or call (780) 425-5510.



403 - 69 Avenue NW
Edmonton, Alberta
Canada
T6P 0C2

PH: (780) 425-5510 FAX: (780) 425-5540

VISIT WWW.MANUSSERVICE.COM FOR ONLINE PRODUCT SUPPORT